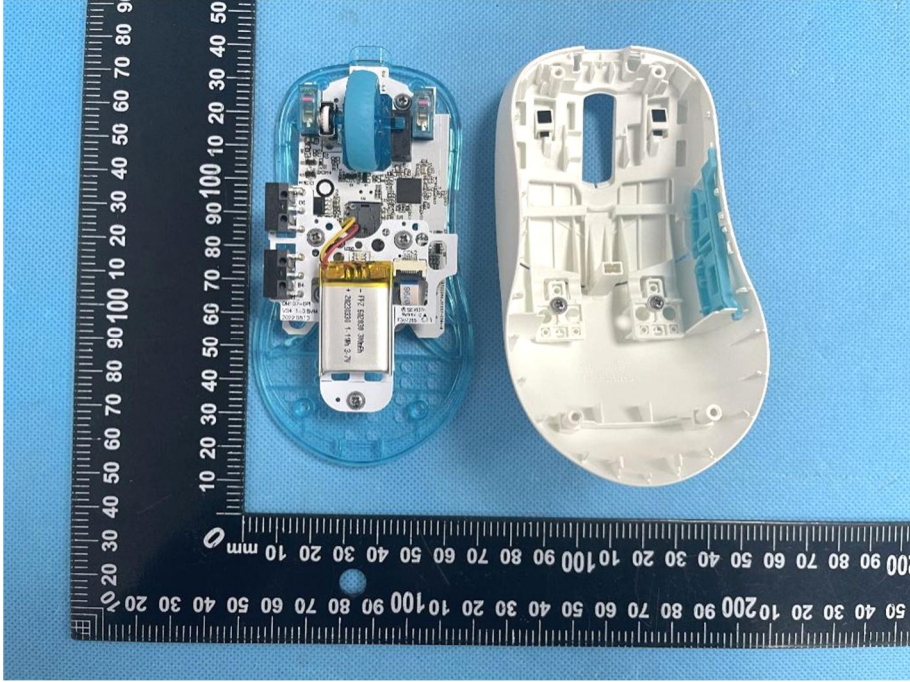
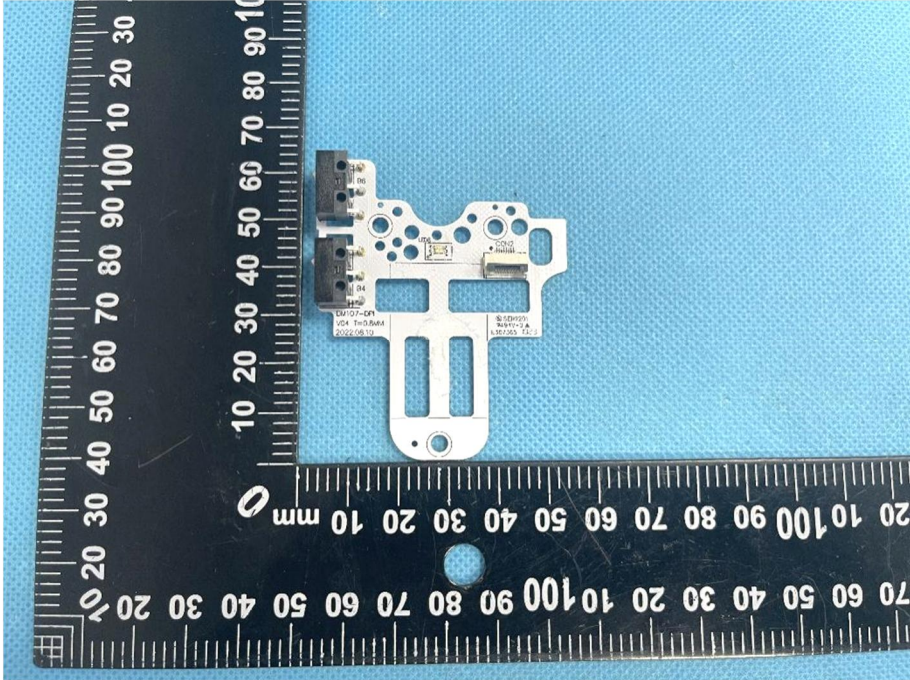
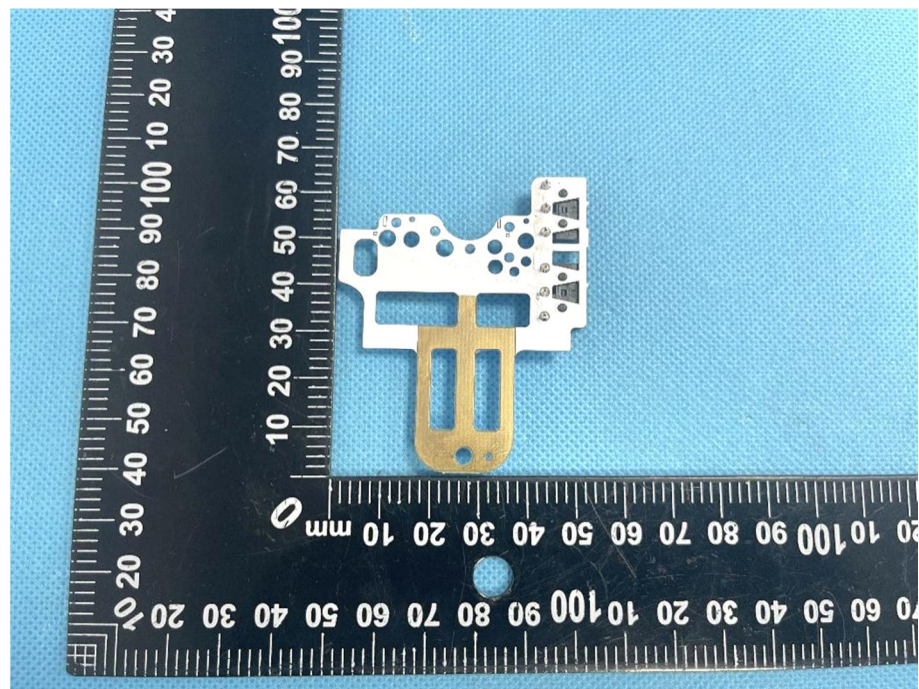


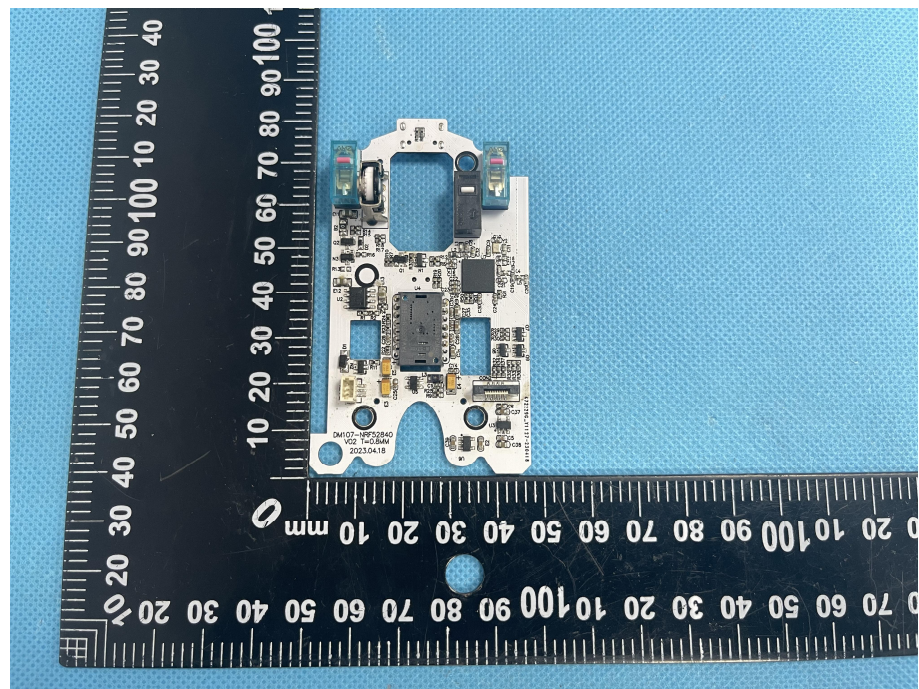
EXHIBIT 3 - EUT INTERNAL PHOTOGRAPHS

<p>EUT Housing and Board View 1</p>	 A photograph showing the internal components of an EUT. On the left is a blue plastic housing with a white PCB board mounted inside. On the right is a white plastic housing. A black ruler with white markings is placed vertically to the left of the components for scale. The ruler shows measurements in millimeters, with markings every 10mm and sub-markings every 1mm. The components are placed on a blue textured surface.
<p>Solder Board-Component View 1</p>	 A photograph showing a close-up of a solder board component. The component is a white PCB board with various components and traces. A black ruler with white markings is placed vertically to the left of the component for scale. The ruler shows measurements in millimeters, with markings every 10mm and sub-markings every 1mm. The component is placed on a blue textured surface.

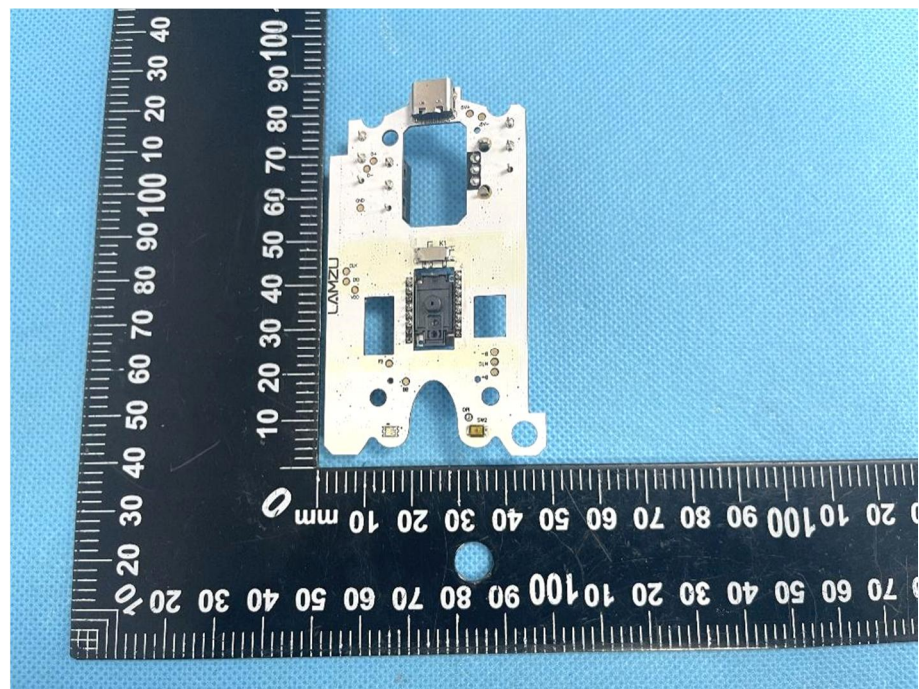
**Solder
Board-Component
View 2**



**Solder
Board-Component
View 3**



**Solder
Board-Component
View 4**



Antenna View

