

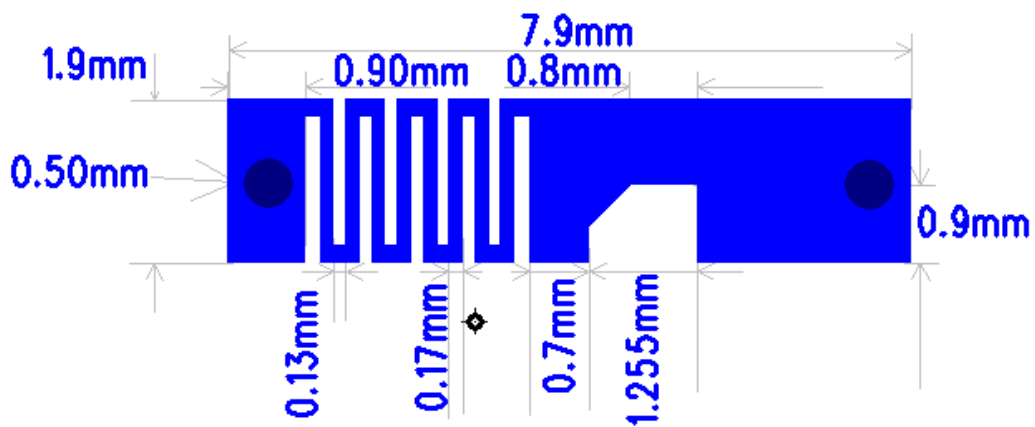
# Antenna Describe

## 1: Antenna Describe

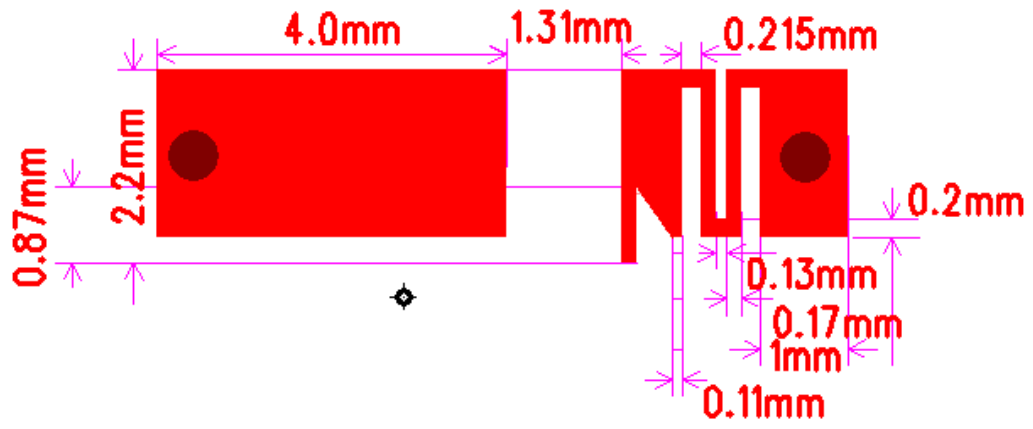
Antenna	PCB
Antenna Gain	1.05dBi
Frequency Range	2.4Ghz-2.483Ghz
Connector Type	Direct
Location of mearement(company name)	SHENZHEN SHIXINZHONGXIN TECHNOLOGY.CO.,LTD

## 2: External View Drawing

Picture of antenna



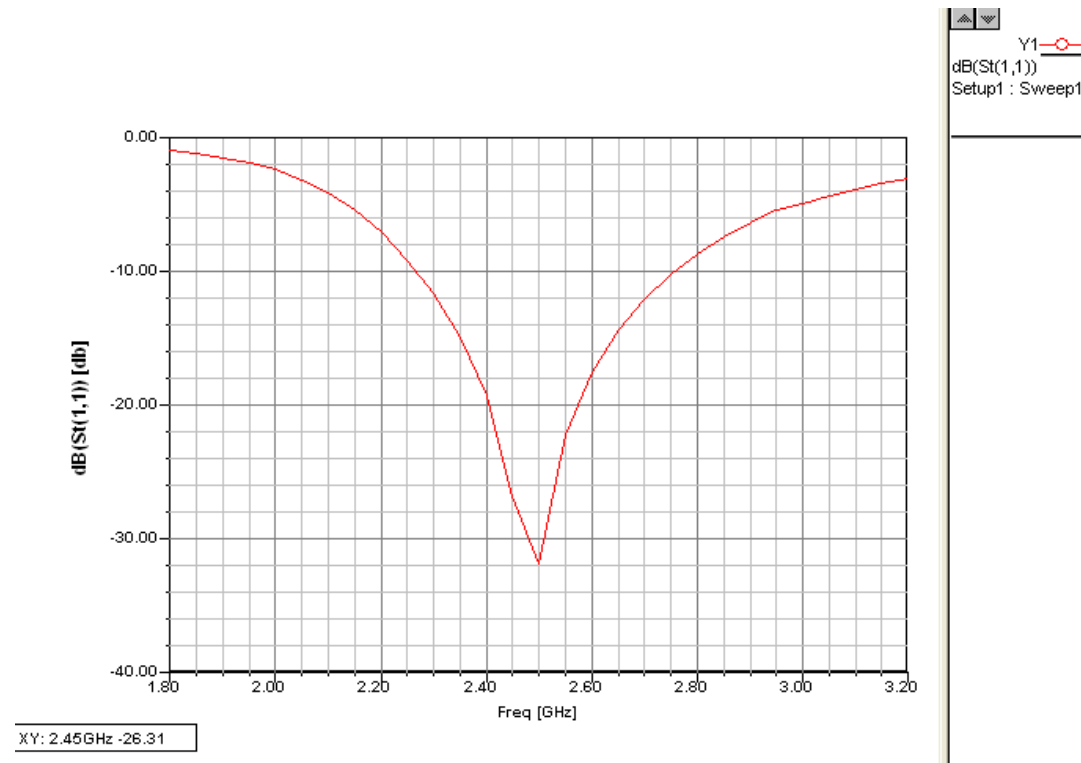
顶层



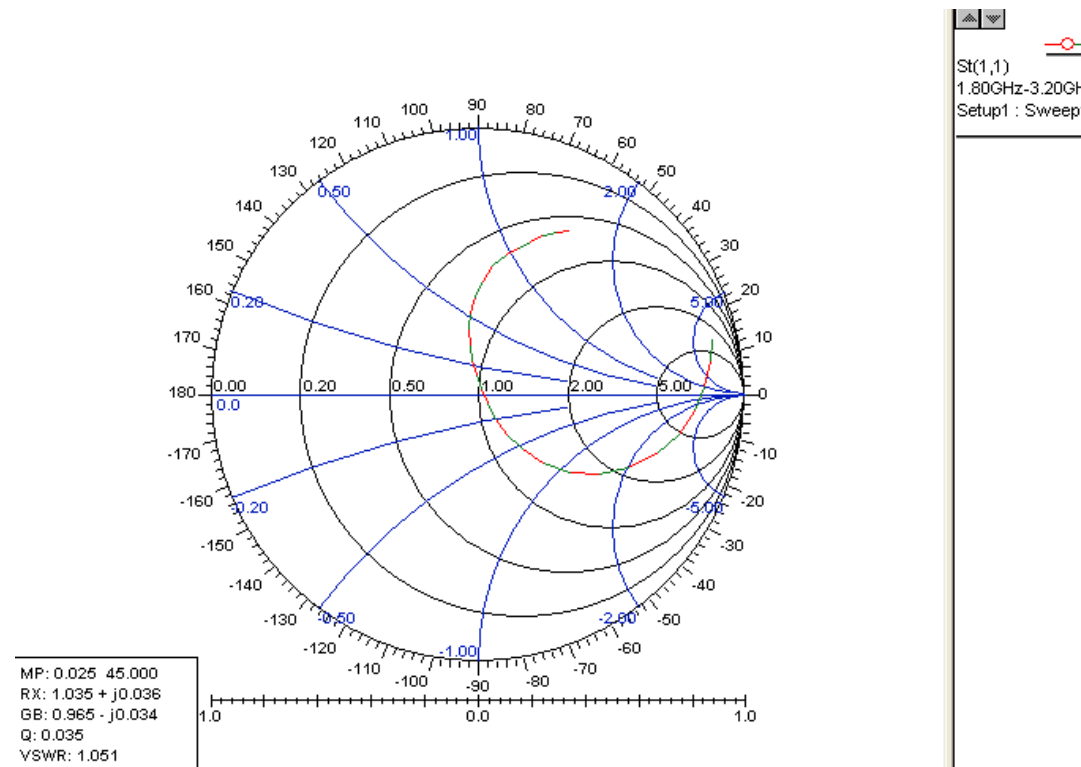
底层

### 3: Measurement Result

#### 3.1 Return Loss (S11)

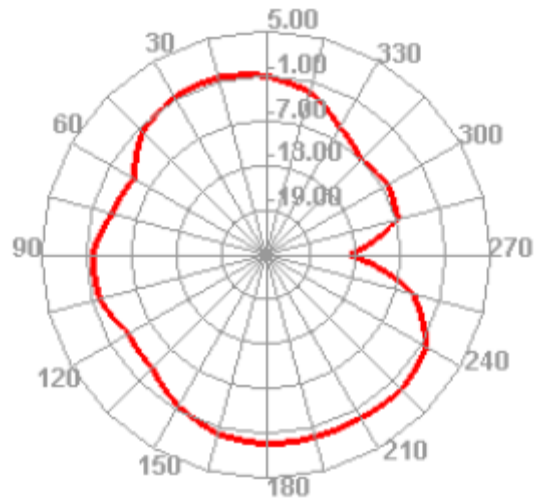


#### 3.2 Smith Chart

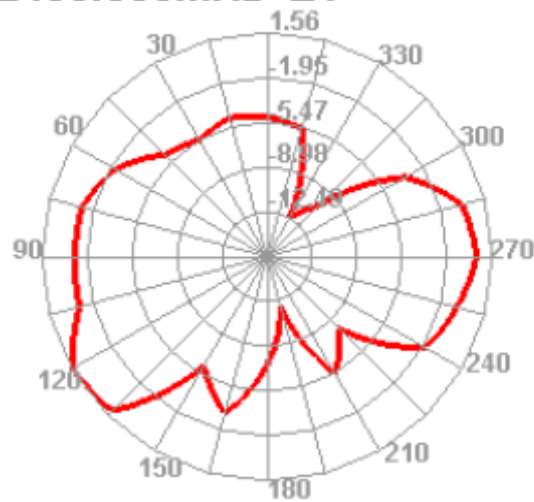


### 3.3 Gain

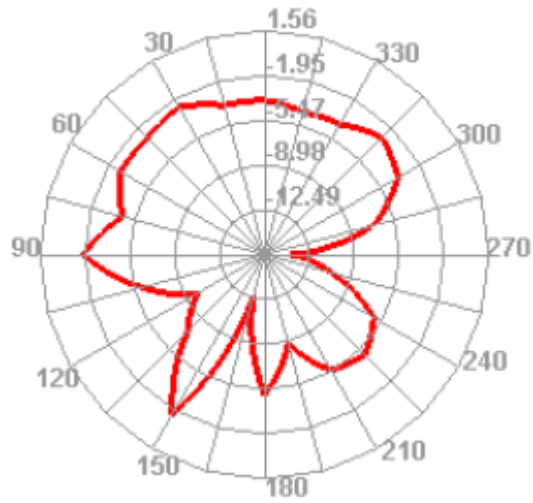
**2400.000MHz H**



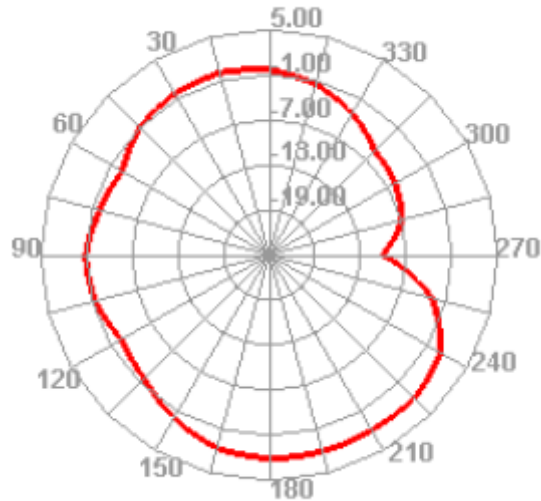
**2400.000MHz E1**



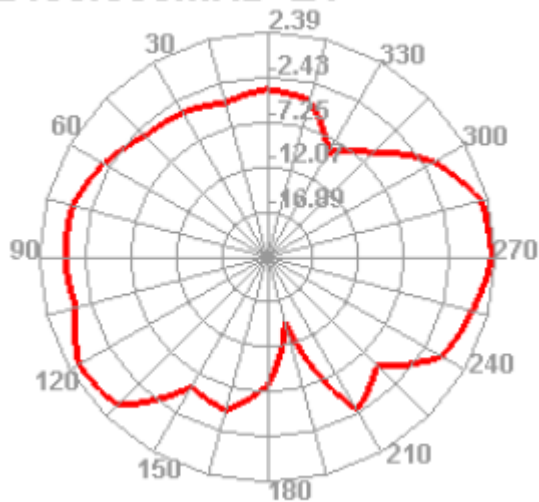
### 2400.000MHz E2



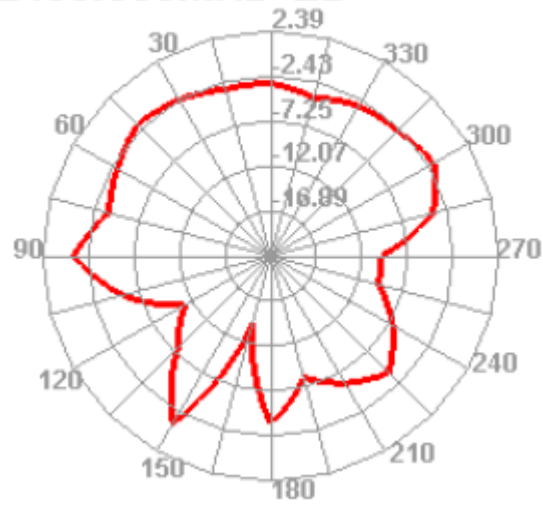
### 2450.000MHz H



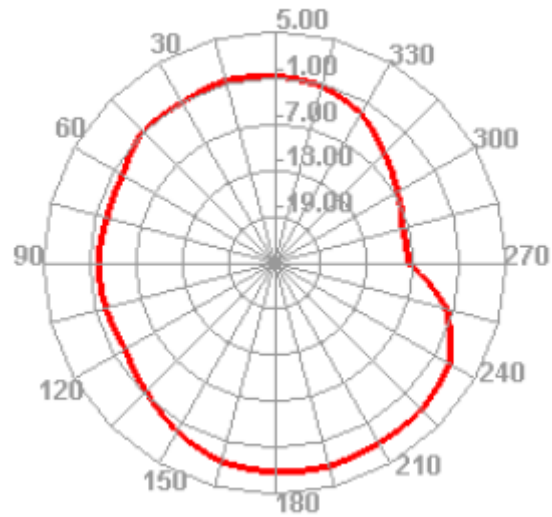
### 2450.000MHz E1



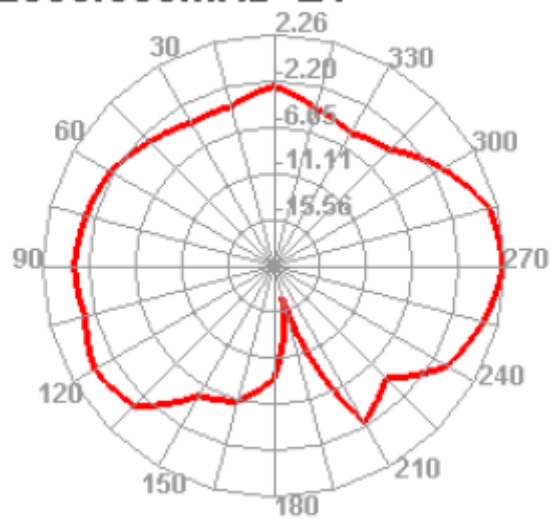
### 2450.000MHz E2



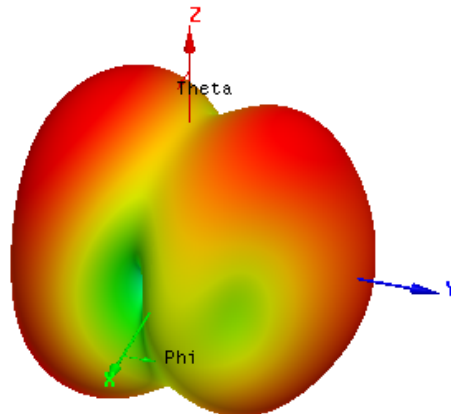
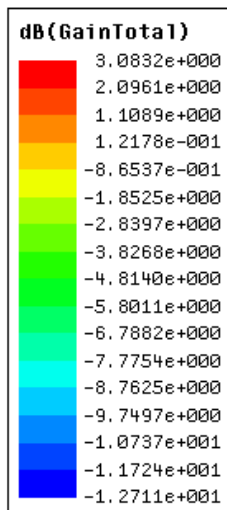
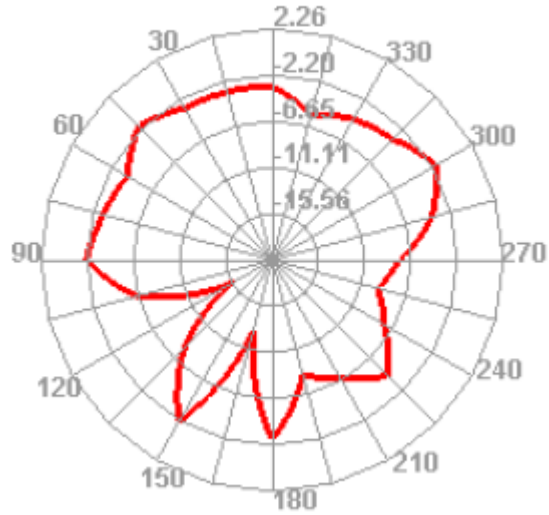
### 2500.000MHz H



### 2500.000MHz E1



## 2500.000MHz E2



### Gain and Efficiency

Frequency	Gain (dBi)	Efficiency(%)
2400MHz	1.03	46
2410MHz	1.02	46
2420MHz	1.05	44
2430MHz	0.85	43
2440MHz	0.88	43
2450MHz	1.01	44
2460MHz	1.03	44
2470MHz	0.65	43
2480MHz	1.04	46
2490MHz	0.77	44
2500MHz	0.80	44