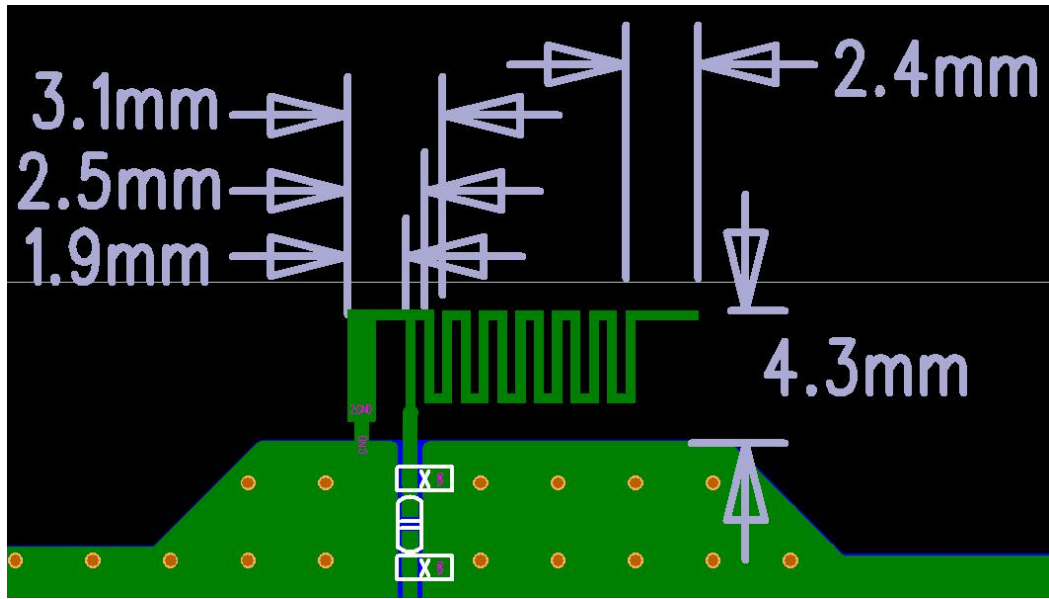




Bluetooth Antenna
specification&Test report

Yichip Microelectronics

©2014



Passive Test For 2.4G										
Freq (MHz)	Effi (%)	Effi (dB)	Gain (dBi)	Gain (dBd)	UHS (%)	DHS (%)	Max (dBi)	Min (dBi)	Attenuat Hor	Attenuat Ver
2400	38.95	-2.01	1.15	1	26.32	21.679	1.15	-18.52	48.13	47.59
2440	50.23	-1.36	2.58	1.52	34.122	30.503	2.58	-19.41	48.35	48.11
2500	32.43	-1.94	0.44	0.55	32.027	31.926	0.44	-19.87	48.67	48.16

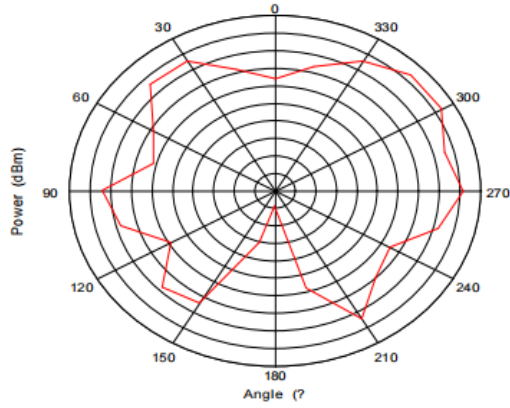
$$G = P_{\text{(测试天线)}} - P_{\text{(标准增益天线)}}$$

$$P_{\text{(标准增益天线)}} = 0 \text{ dBm}$$

Horizontal for 2D

2400MHz

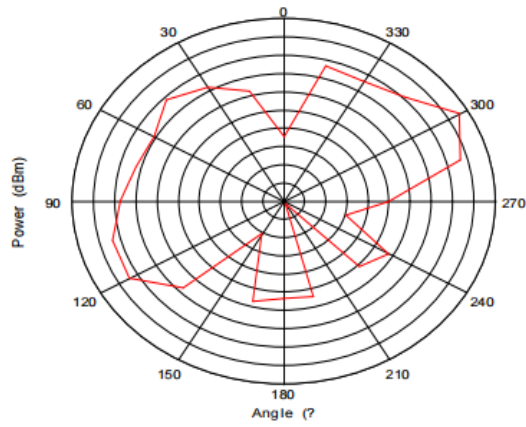
Cut1



Max: 3
Min: -7
Scale: 1/div

2440MHz

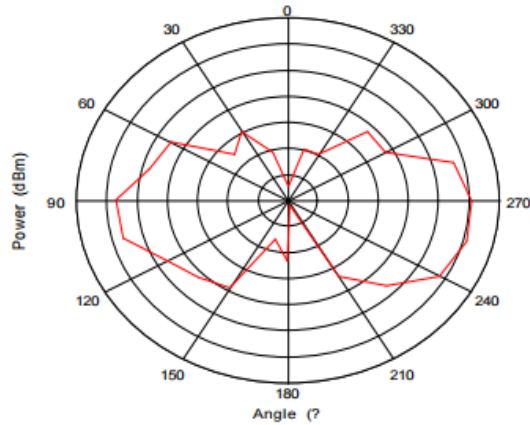
Cut2



Max: 4
Min: -16
Scale: 2/div

2500MHz

Cut3



Max: 4
Min: -10
Scale: 2/div