

MUNBYN

P44S Label Printer

User Manual

1.01



Contents

1.0. Product Introduction	3
1.1. What's in the Box	3
1.2. Product Overview	4
1.3. Quick Printer Connection	5
1.4. Label Setup	5
1.5. Function Buttons.....	6
1.6. Voice Command	7
2.0. iOS/Android Printer Installation Instructions	8
3.0. Windows/Mac/Linux Printer Installation Instructions	9
3.1. Before Installing	9
3.2. USB Windows Printer Installation	9
3.3. USB Mac Printer Installation	13
3.4. USB Linux Printer Installation	14
3.5. Wi-Fi Windows Printer Installation.....	15
3.6. Wi-Fi Mac Printer Installation	16
4.0. Product Specification	17

1.0. Product Introduction

Thank you for choosing our thermal printer. Our product is capable with Windows, Mac, and Linux. Before using the printer, please take a few minutes to read this manual. It will guide you to set up the printer to best fit your needs.

1.1. What's in the Box

When you receive the package, open, and check the items in it.



Figure 1-1 What's in the Box

- A** Printer
- B** USB Cable
- C** Adapter
- D** Power Cord
- E** Quick tips
- F** Labels
- G** User Manual

1.2. Product Overview



Figure 1-2 P44S Overview Diagram

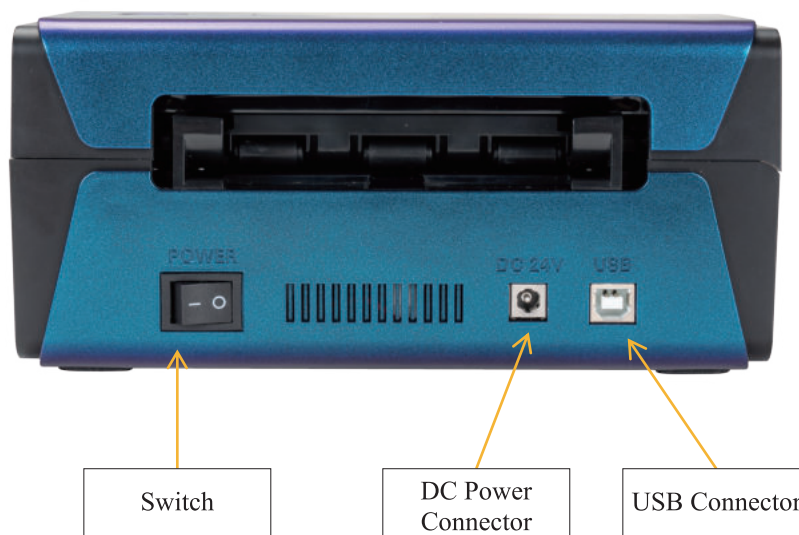


Figure 3 P44S Rear Diagram

1.3. Quick Printer Connection

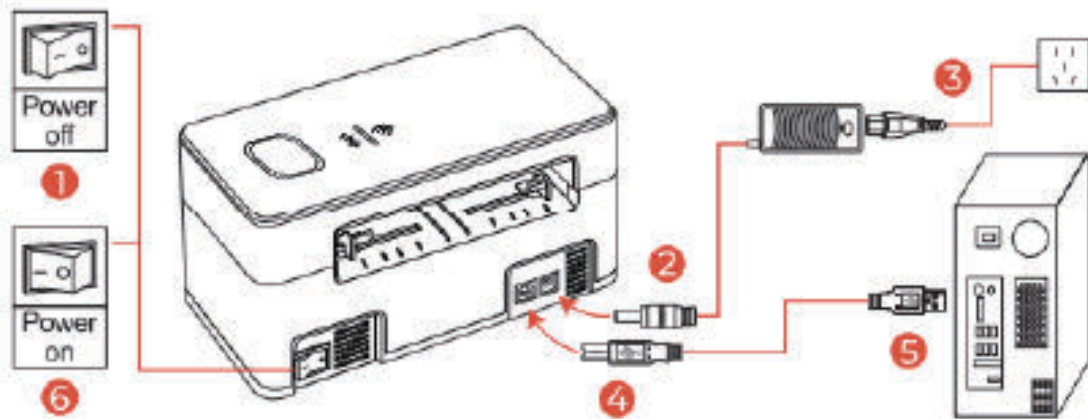


Figure 1-4 Connection Diagram

1. Ensure the switch is OFF
2. Connect the power cable to the printer
3. Plug in the power cord
4. Connect the USB cable to the printer
5. Connect the USB cable to the PC
6. Turn the power ON

1.4. Label Setup

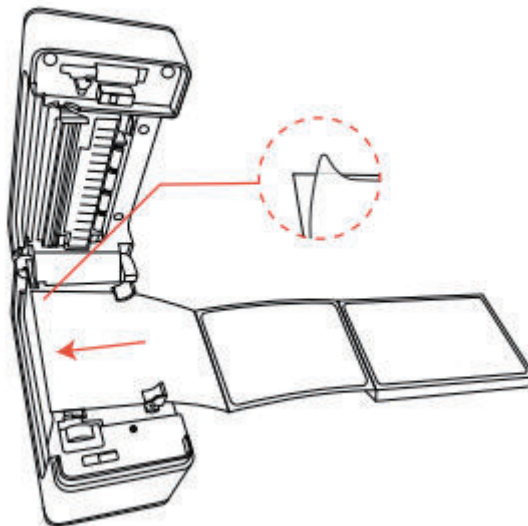





Figure 1-5 Label Setup Diagram

Automatic Label Recognition: Open the top cover button, load no less than 4 consecutive labels into the printer, and close the top cover. After the paper feeds stably, press and hold the feeder button until hearing one “beep”, and the printer will automatically recognize the label.

1.5. Function Buttons

Table 1-1 Function Buttons

1	Feeder Button		Press the button: Pull out one label.
			Press and hold the button until hearing one 'beep': Automatically label identification.
			Press and hold the button until hearing two 'beeps': Print the self-test label.
			Press and hold the button until hearing three 'beeps': Activate the voice.
			Press and hold the button until hearing five 'beeps': Reset the printer.
2	Printer Status Light	Green	Ready to print or printing.
		Red - Blinking (Every 1s)	The cover is not closed.
		Red - Blinking (Every 2s)	Label paper is not identified.
		Green and Red - Alternating	The printer head is overheated.
3	Wi-Fi/Bluetooth Connection Status Light	Blue	The printer's Bluetooth is connected.
		White	The printer's Wi-Fi is connected.
4	Switch		Power ON/OFF.
5	Top Cover Button		Open the top cover.

1.6. Voice Command

Table 1-2 Voice Command

Voice Command	Execute the Result
Hi MUNBYN (Pronunciation : / ^l mʌnbɪn)	The printer responds loudly “I’m here”, and the printer’s voice wakes up (if there is no command within the 30s, the printer will sleep and say “I’m leaving. Call me next time”).
Print test page	The printer responds loudly “Print test page” and prints the self-test page.
Learn label	The printer responds with the “Learn label” and automatically identifies the loaded label.
Take one label	The printer responds with “Take one label” and pulls out one label.
Printer reset	The printer responds with “Printer reset” and reset.
Turn off voice	The printer responds with “Turn off voice” and the voice function is off.

Note:

1. The voice will be activated automatically out loud with “welcome to the MUNBYN printer” after the machine is powered on; The printer top cover is open, automatically out loud with “cover is open”; No label loading in the printer will automatically out loud with “out of paper”.
2. After the voice function is off, press the feeder button until you hear three ‘beeps’ to reactivate the voice.

2.0. Application Installation

Search **Munbyn Print** on Google Play or App Store to get the app or scan the QR code to download and install the application.

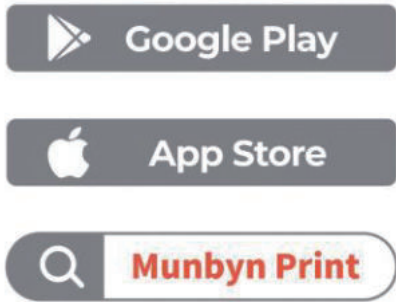


Figure 2-1 Search App



Figure 2-2 Google Play



Figure 2-3 App Store

Note: After opening the app, select **allow the app to locate permission** (Android only) and **use the phone's Bluetooth permission**.

3.0. Windows/Mac/Linux Printer Installation Instructions

Note: To use the P44S printer on a PC, please install this printer driver in advance.

- 1) Get the latest driver from this link:
- 2) If your system is updated, please reinstall the driver to ensure that the printer can be used normally.

3.1. Before Installing

- 1) To connect the printer, refer to section [1.3](#) for a quick printer connection.
- 2) Place the thermal label paper into the printer and power it on. For paper loading, refer to section [1.4](#).

3.2. Windows USB Driver Installation

- 1) Double-click **Munbyn-Windows-Driver-Latest-Wifi-v1.1.1**.



Figure 3-1 Windows Printer Driver Installation Package

- 2) The computer pops up a prompt to check the printer is connected, click **OK**.

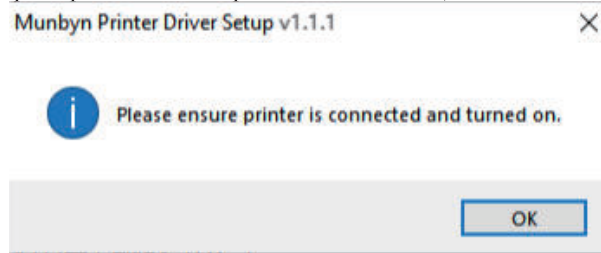


Figure 3-2 Windows Printer Driver Install Interface

- 3) Select the **USB** port for installation, and then click **Next**.

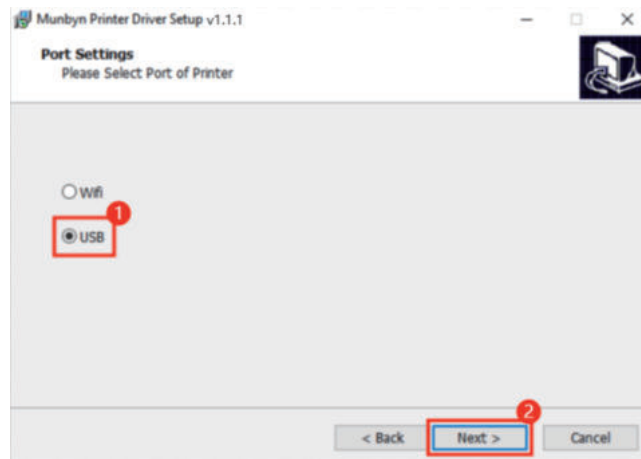


Figure 3-3 Select USB Port for Installation

- 4) Select **Next**.

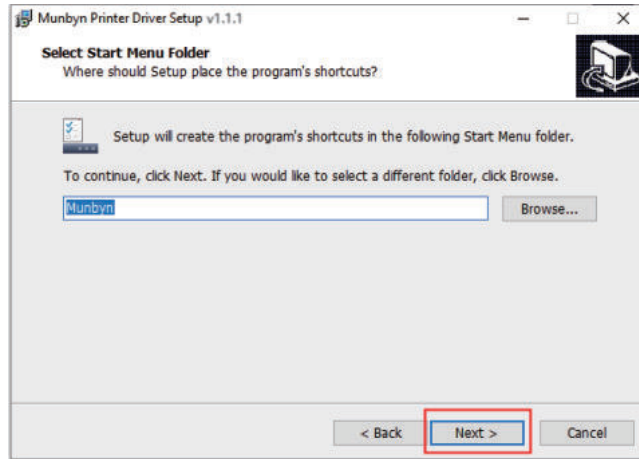


Figure 3-4 Windows Printer Driver Install Interface

5) Click **Install**, wait for about 3s, and the setup is finished.

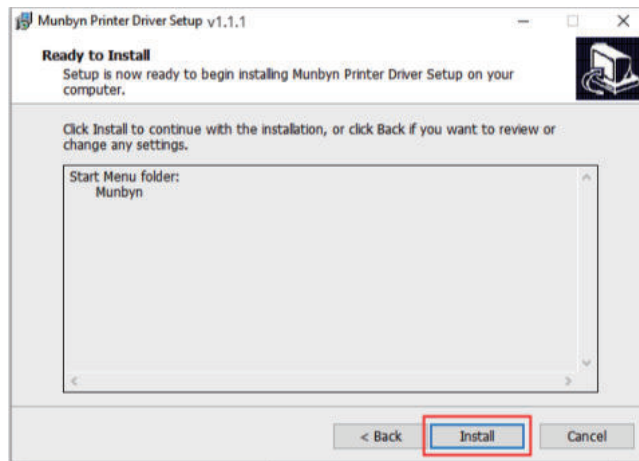


Figure 3-5 Windows Printer Driver Install Interface

6) The “Open Help Document” automatically checked, which is a P44S FAQs document. Then click “Finish” to exit the setup and the printer is ready to use.

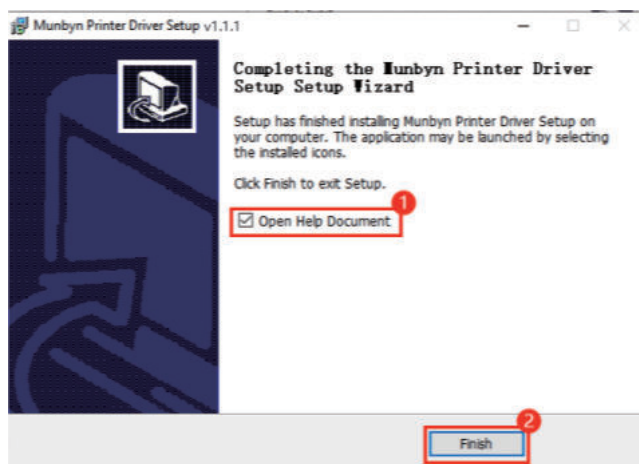


Figure 3-6 Windows Printer Driver Install Interface

7) Print a test page to verify the driver has been set up successfully as per the following steps.

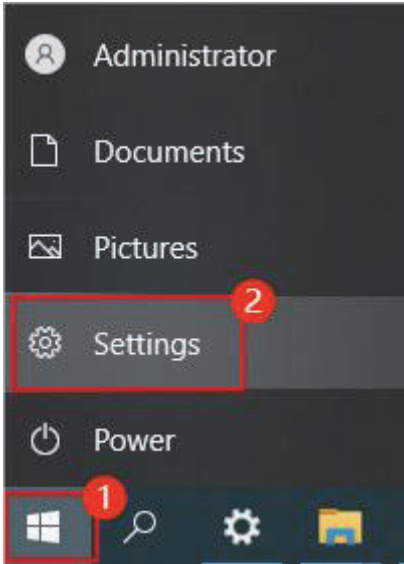


Figure 3-7 Print Test Page

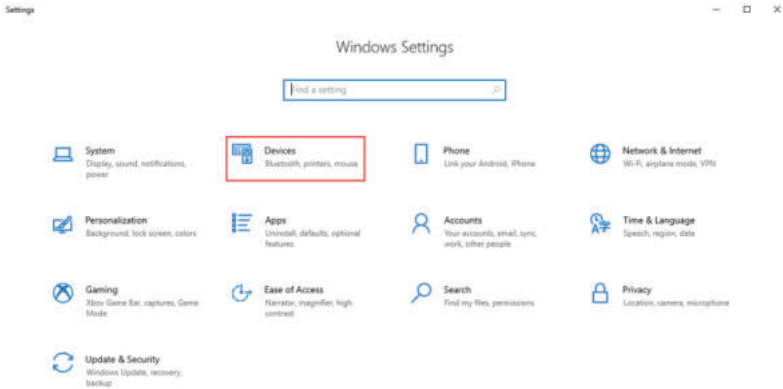


Figure 3-8 Print Test Page

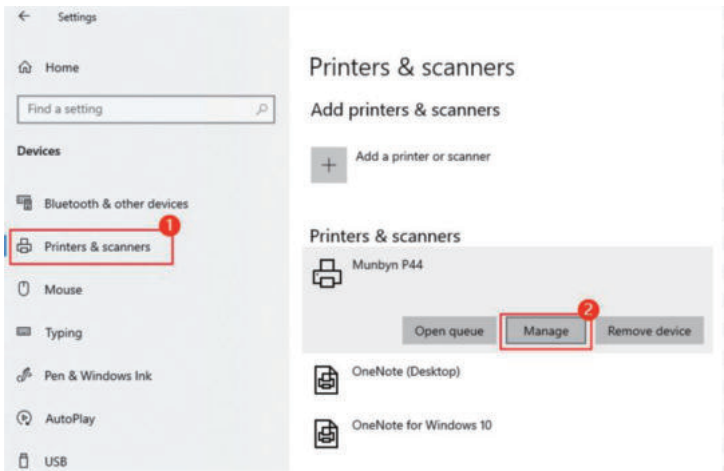


Figure 3-9 Print Test Page

← Settings

🏠 Munbyn P44

Manage your device

Printer status: Idle

Open print queue

Set as default

[Print a test page](#)

[Run the troubleshooter](#)

[Printer properties](#)

[Printing preferences](#)

[Hardware properties](#)

[🗉 Get help](#)

Figure 3-10 Print Test Page

3.3. Mac Driver Installation

1) Double-click **Munbyn-Mac-Driver-v1.1.1.dmg**.



Figure 3-11 Mac Printer Driver Installation Package

2) Chose the **Open and Install Driver**, then double click **MunbynPrinter_v1.1.1_signed.pkg**.

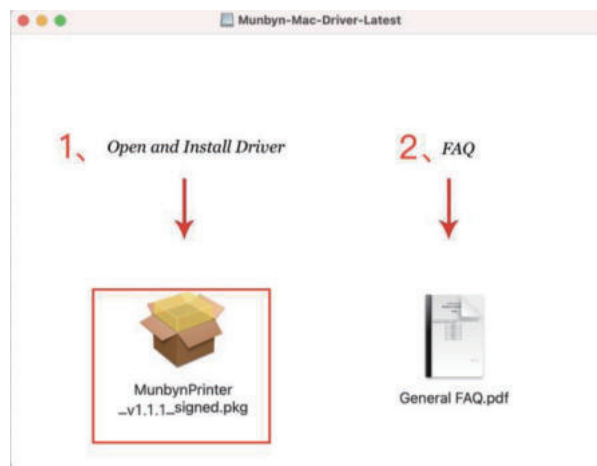


Figure 3-12 Mac Printer Driver Install Interface

3) Follow the prompts to complete the installation, as shown in the figures below.

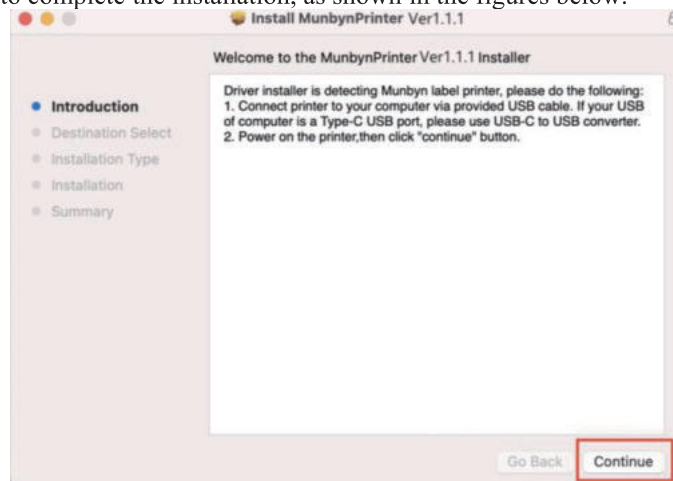


Figure 3-13 Mac Printer Driver Install Interface

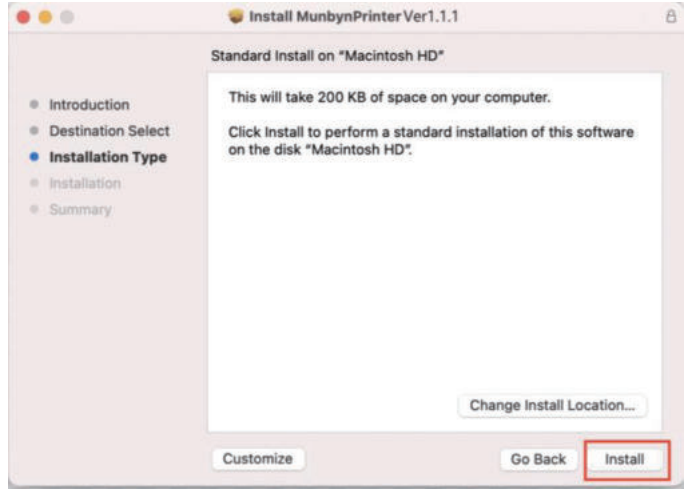


Figure 3-14 Mac Printer Driver Install Interface

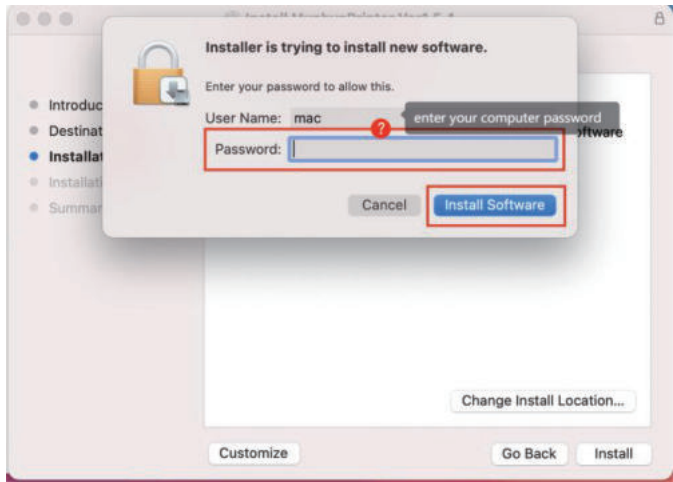


Figure 3-15 Mac Printer Driver Install Interface

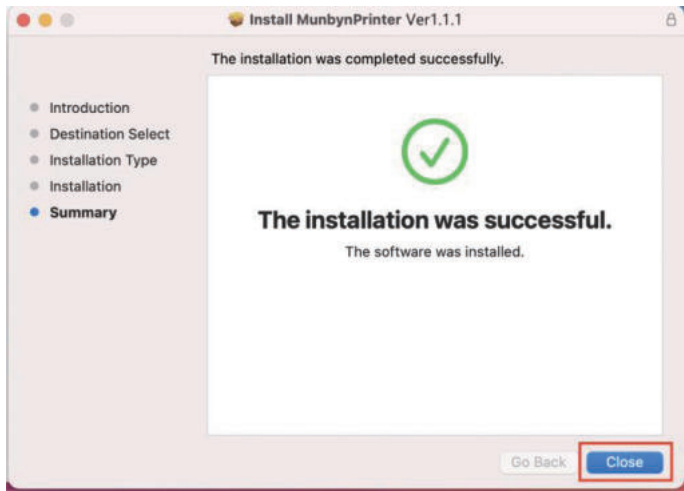


Figure 3-16 Mac Printer Driver Install Interface

3.4. Linux Driver Installation

- 1) Right-click the `munbyn-ubuntu-driver` folder, then select **Open in Terminal**.

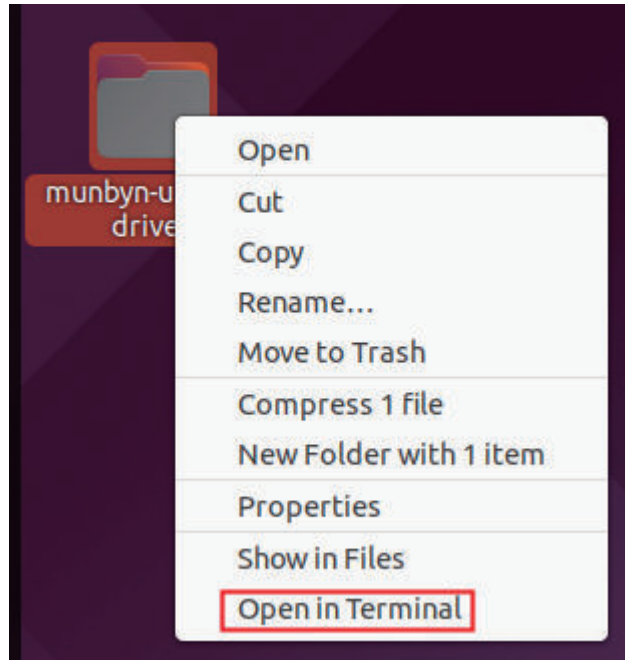


Figure 3-17 Open in Terminal

2) Enter the installation command: `sudo sh Munbyn_Driver_Ubuntu.run`, then press the **Enter** key on the keyboard.

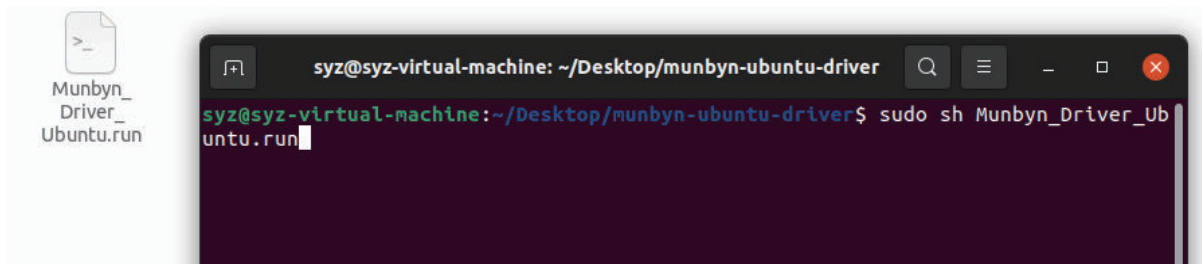


Figure 3-18 Enter the Installation Command

3) Enter the password of the computer and then press the **Enter** key on the keyboard to finish the installation.

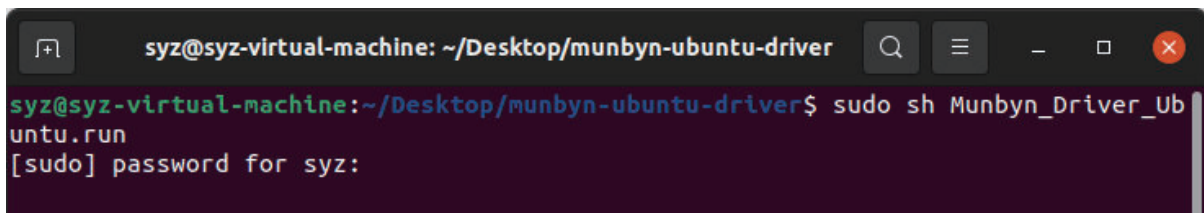


Figure 3-19 Enter the Password

3.5. Windows Printer Settings

Notes: To use the P44S printer on a PC, please install this printer driver in advance.

1)Get the latest driver from this link:

2)If your system is updated, please reinstall the driver to ensure that the printer can be used normally.

Search **Munbyn Print** on Google Play or App Store to get the app or scan the QR code to download and install the application.

MUNBYN



Figure 3-20 Search App



Munbyn Print

Figure 3-21 Munbyn Print App



Figure 3-22 Demo video

Notes: After opening the app, select **allow the app to locate permission** (Android only) and **use the phone's Bluetooth permission**.

3.5. Wi-Fi Mac Printer Installation

Notes: To use the P44S printer on a PC, please install this printer driver in advance.

1)Get the latest driver from this link:

2)If your system is updated, please reinstall the driver to ensure that the printer can be used normally.

Search **Munbyn Print** on Google Play or App Store to get the app or scan the QR code to download and install the application.

MUNBYN



Figure 3-23 Search App



Munbyn Print

Figure 3-24 Munbyn Print App



Figure 3-25 Demo video

Notes: After opening the app, select **allow the app to locate permission** (Android only) and **use the phone's Bluetooth permission**.

4.0. Product Specification

Table 4-1 Product Specification

Method	Direct Thermal
Resolution	203dip
Max Printing Speed	150mm/s
Paper Width	40-110mm (1.57-4.3inches)
Paper Thickness	0.06-0.25mm
Power Adapter	24V/2A
Printing Life	TPH 50km
Operating Environment	Temperature: -10 to 50°C Humidity: 10-90%(non-condensing)
Storage Environment	Temperature: -40 to 80°C Humidity: 5-95%(non-condensing)
Connection	USB/Wi-Fi
Weight	815g
Dimension	D 198mm*W 82mm*H 93mm



Scan the QR code for Facebook online chat

Contact us

MUNBYN provides 18 month's warranty and lifetime free service.

If you encounter any issues with the product, please contact the MUNBYN team to promptly receive troubleshooting tips or a replacement.

Email: support@munbyn.com (24-7 online support)

Website: www.munbyn.com (how-to videos)

WhatsApp: +8617817881067

Phone: +1 650 206 2250

FCC Warning Statement: Changes or modifications to this unit not expressly approved by the party responsible for compliance could void the user's authority to operate the equipment. This equipment has been tested and found to comply with the limits for a Class B digital device, pursuant to Part 15 of the FCC Rules. These limits are designed to provide reasonable protection against harmful interference in a residential installation. This equipment generates, uses and can radiate radio frequency energy and, if not installed and used in accordance with the instructions, may cause harmful interference to radio communications. However, there is no guarantee that interference will not occur in a particular installation. If this equipment does cause harmful interference to radio or television reception, which can be determined by turning the equipment off and on, the user is encouraged to try to correct the interference by one or more of the following measures:

- **Reorient or relocate the receiving antenna.**
- **Increase the separation between the equipment and receiver.**
- **Connect the equipment into an outlet on a circuit different from that to which the receiver is connected.**
- **Consult the dealer or an experienced radio/TV technician for help.**

This device complies with Part 15 of the FCC Rules. Operation is subject to the following two conditions: (1) this device may not cause harmful interference, and (2) this device must accept any interference received, including interference that may cause undesired operation.

FCC Radiation Exposure Statement

The antennas used for this transmitter must be installed to provide a separation distance of at least 20 cm from all persons and must not be co - located for operating in conjunction with any other antenna or transmitter.