

# MUNBYN

**MUNBYN**

More Choice  
For Your Growing Business

**ITPPI30B**

**Bluetooth Shipping Label Printer**

# USER MANUAL



**Version: 1.0.0**

# Contents

<b>01 Product Introduction</b> .....	<b>01</b>
1.1 What's in the package? .....	01
1.2 Printer Overview .....	02
<b>02 Set Up The Printer</b> .....	<b>03</b>
2.1 Quick printer connection .....	03
2.2 Label setup .....	04
2.3 Bluetooth connection for .....	05
Smartphone/Tablet	
2.3.1 Connect the printer through .....	05
the Munbyn Print APP	
2.4. USB connection for Laptop/PC .....	06
2.4.1. Windows Driver Installation .....	07
2.4.2. Mac Driver Installation .....	08
<b>03 Pro Tips</b> .....	<b>10</b>
<b>04 Feeder Button instruction</b> .....	<b>11</b>
<b>05 LED Status</b> .....	<b>11</b>
<b>06 Feeder Button Instruction</b> .....	<b>11</b>
<b>07 Specification</b> .....	<b>12</b>
<b>08 Safety Notices</b> .....	<b>13</b>
<b>09 FCC Statement</b> .....	<b>14</b>
<b>10 Tech Support</b> .....	<b>15</b>

## 01 Product Introduction

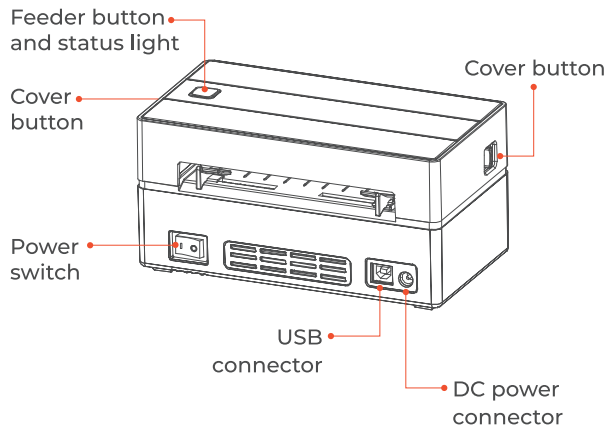
### I 1.1 What's in the package?



- |                      |                          |                     |
|----------------------|--------------------------|---------------------|
| <b>A</b> Printer     | <b>B</b> USB Flash Drive |                     |
| <b>C</b> USB Cable   | <b>D</b> Power Adapter   | <b>E</b> Power Cord |
| <b>F</b> User Manual | <b>G</b> Quick Tips      | <b>H</b> Labels     |

• If contents are missing or damaged, please contact us.

## 1.2 Product features

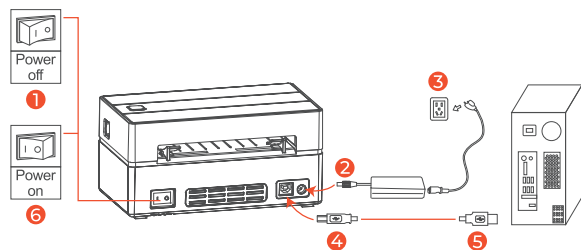


## 02 Set Up The Printer

### Recommend:

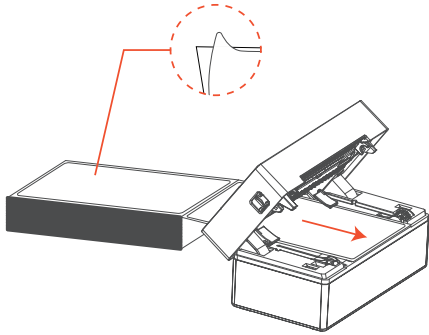
Watch the short setup video at: [www.bit.ly/unboxing130B](http://www.bit.ly/unboxing130B)

### 2.1.Quick printer connection



- Please follow the sequence of the above picture to operate.

## | 2.2.Label setup



### **Automatic label identification:**

Load no less than 4 consecutive labels into the printer. Once the paper is stable, press and hold feeder button, until you hear a “beep”. Then, the printer will automatically label identification calibrate the label.

## | 2.3. Bluetooth connection for Smartphone/Tablet

The printer is suitable for bluetooth of mobile phones and tablets, not compatible with bluetooth of computers, And the printer cannot be connected directly via the Bluetooth of the device, it needs to be connected using the Munbyn Print APP.

### | 2.3.1. Connect the printer through the Munbyn Print APP

- 1 Search “Munbyn Print” on App Store or Google Play to get the App or scan the QR code below to download



**Munbyn Print**

2 Scan the QR code tutorial below to set it up



3 If your mobile needs a PIN password, please enter "0000".

**Note:**

Due to the mobile phone system requirements, the app needs to access your location services information, you'll get a notification requesting permission. You need to enable GPS and confirm authorization (Android only).

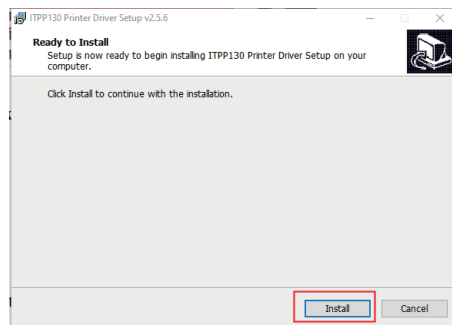
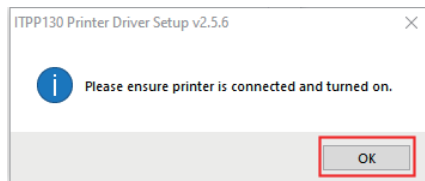
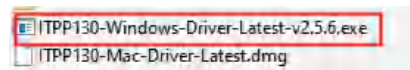
## 2.4.USB connection for Laptop/PC

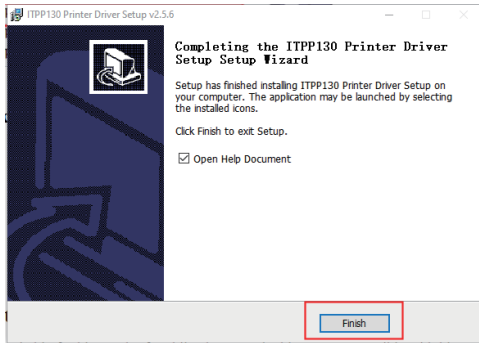
- Follow step (2.1 Quick printer connection) to connect the computer and printer using the USB cable.
- Download the printer driver from the following URL or insert the USB flash drive into your computer, and follow the steps (2.4.1-2.4.2) to complete the installation.

**Note:** For the latest driver, please visit: [www.bit.ly/driver130B](http://www.bit.ly/driver130B)

## 2.4.1 Windows Driver Installation

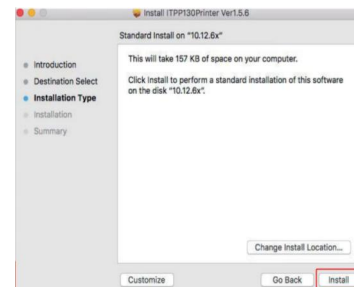
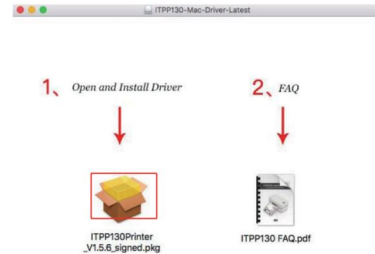
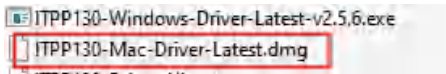
Downloaded software from the web address or insert the USB flash drive into your computer, open the driver installation package, Click on the .exe file for Windows computers, and follow the steps below to install

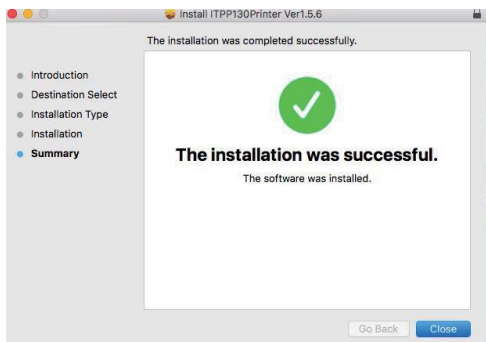




## 2.4.2. Mac Driver Installation

Downloaded software from the web address or insert the USB flash drive into the computer, open the driver installation package, click the .dmg file of the Mac computer, and follow the steps below to install





## 04 FAQ

FAQ file, please visit: [www.bit.ly/130Bfaq2](http://www.bit.ly/130Bfaq2)

## 05 LED Status

Light	Description	Troubleshoot
Blue	Normal operation	
Green	Bluetooth connected	
Flashing Red (every 2 seconds)	Label paper is not identified	Run automatic label identification
Flashing Red (every 1 second)	Cover is not closed	Check that the cover is completely closed
Flashing Blue and Red	Printer head is overheated	Printer will automatically resume once the printer head has cooled down

## 06 Feeder Button Instruction

Printer status	Feeder button	Function
Printing	Press the button	Pause printing
Standby	Press and hold on until you hear one beep	Automatic label identification
Standby	Press and hold on until you hear five beeps	Reset Printer

## 03 Pro Tips

- Anytime you change your label, run the automatic label identification.
- Press the feeder button on the printer to skip a blank label.
- To run a self-test, press and hold the feeder button until you hear two short beeps.
- To ensure your printing quality, please use MUNBYN labels. If you use other brands' label paper, please run "automatic label identification" before printing.
- Regularly clean the printer head.
- If the paper is jammed and the red light flashes, run Automatic label identification.
- Insert Munbyn into the same USB port on your computer every time. This will avoid creating duplicate copies of the printer in your operating system.

## 07 Specification

Method	Direct Thermal
Resolution	203 dpi
Max Printing Speed	150 mm/s
Paper Width	40-110 mm (1.57-4.3inches)
Paper Thickness	0.06-0.25 mm
Power Adapter	24V / 2.5A
Printing Life	TPH 100Km
Operating Environment	Temperature: 0 to 45 °C Humidity: 10-90% (non condensing)
Storage Environment	Temperature: -10 to 50 °C Humidity: 10-80% (non condensing)
Connection	Bluetooth / USB
Weight	1.76 lbs/0.8kg
Dimensions	182x99x87mm(L*W*H)

## 08 Safety Notices

- The printer head can become very hot after printing labels. Do not touch the printer head.
- Do not bend the power cord excessively or place objects on the cord.
- Do not use the printer if you find any irregularities as these could result in fire or electrocution.
- Keep the printer out of reach of children.
- Use only approved accessories and do not try to disassemble, repair the unit by yourself.
- Keep the printer away from water and other objects that could penetrate the components.
- Please unplug the printer when it is not in use for long periods.



## 09 FCC Statement

Changes or modifications not expressly approved by the party responsible for compliance could void the user's authority to operate the equipment.

This equipment has been tested and found to comply with the limits for a Class B digital device, pursuant to Part 15 of the FCC Rules. These limits are designed to provide reasonable protection against harmful interference in a residential installation. This equipment generates uses and can radiate radio frequency energy and, if not installed and used in accordance with the instructions, may cause harmful interference to radio communications.

However, there is no guarantee that interference will not occur in a particular installation. If this equipment does cause harmful interference to radio or television reception, which can be determined by turning the equipment off and on, the user is encouraged to try to correct the interference by one or more of the following measures:

- Reorient or relocate the receiving antenna.
- Increase the separation between the equipment and receiver.
- Connect the equipment into an outlet on a circuit different from that to which the receiver is connected.
- Consult the dealer or an experienced radio/TV technician for help  
This device complies with part 15 of the FCC rules. Operation is subject to the following two

## 10 Tech Support

**E-mail:** [support@munbyn.com](mailto:support@munbyn.com)

**Whatsapp:** +86 1 781 788 1067

**Phone:** +1 650 206 2250

**Skype:** munbyn

**Support Time:** Monday to Friday 24 hours.

Support Time: Monday to Friday 24 hours.  
MUNBYN provides 24 months' warranty and lifetime free service. If you encounter any issues with the product, please contact the MUNBYN team to promptly receive troubleshooting tips or a replacement.

**Website:** [www.munbyn.com](http://www.munbyn.com)

(how-to videos, warranty details)

