



深圳市天威讯无线技术有限公司

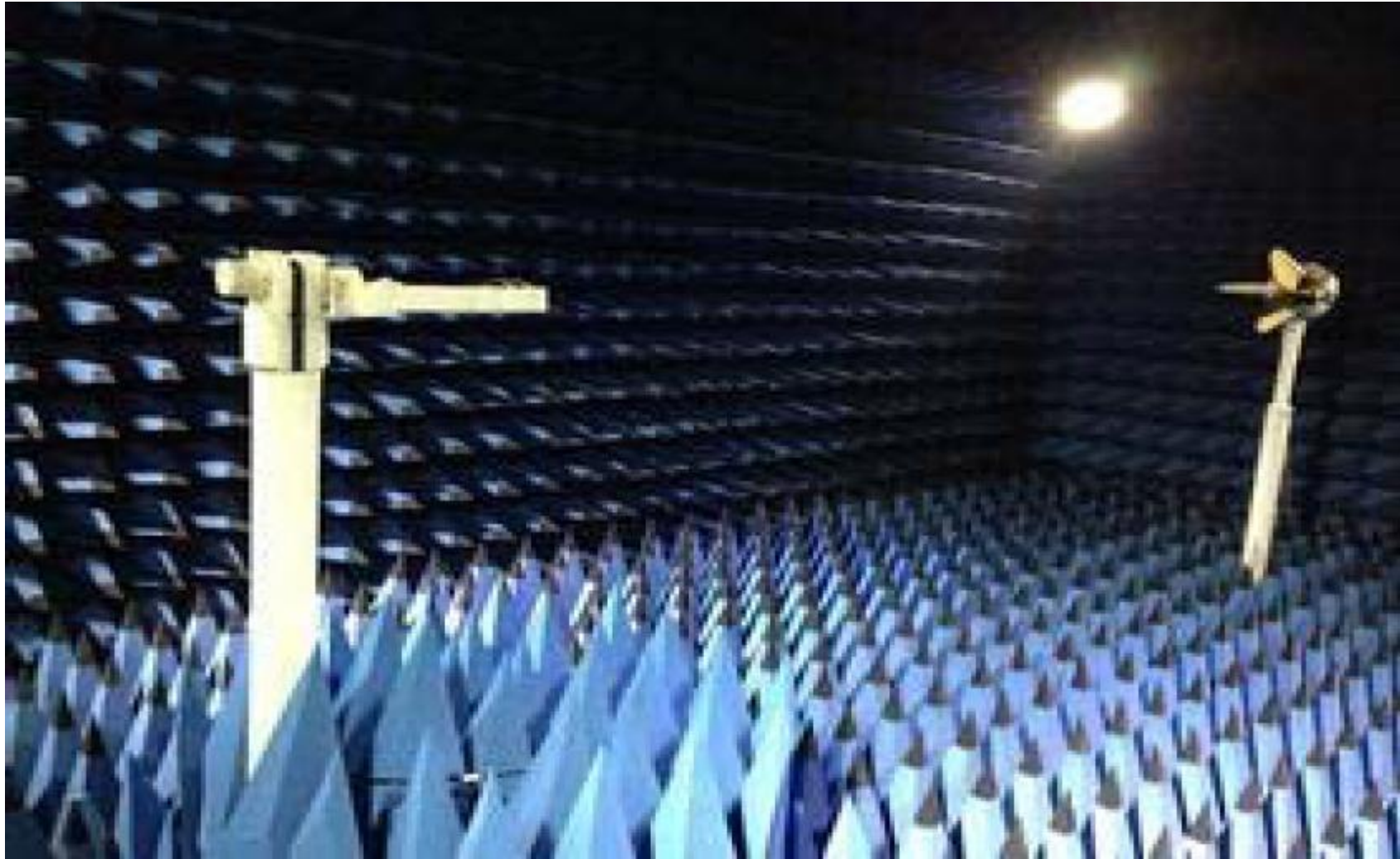


Item name: P2

Frequency band: 2.4G/5GHz

Version:V0

DATE:2024-3-21

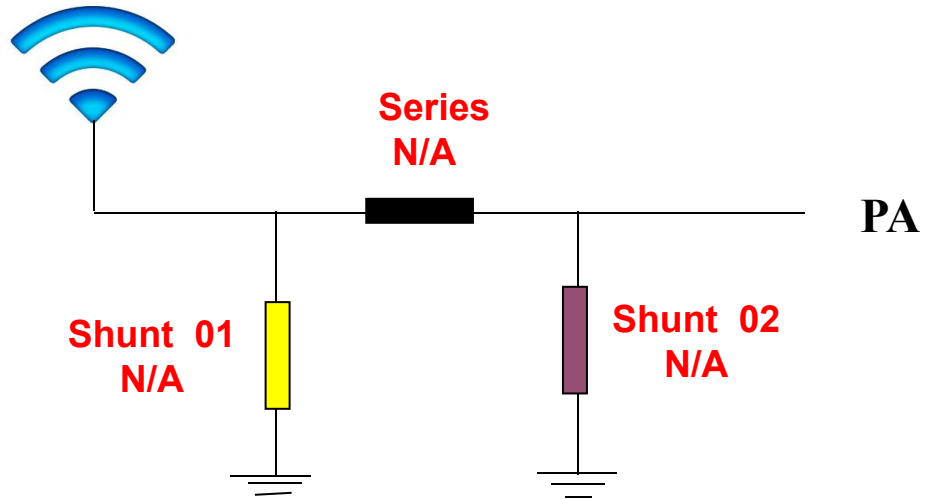




Contents

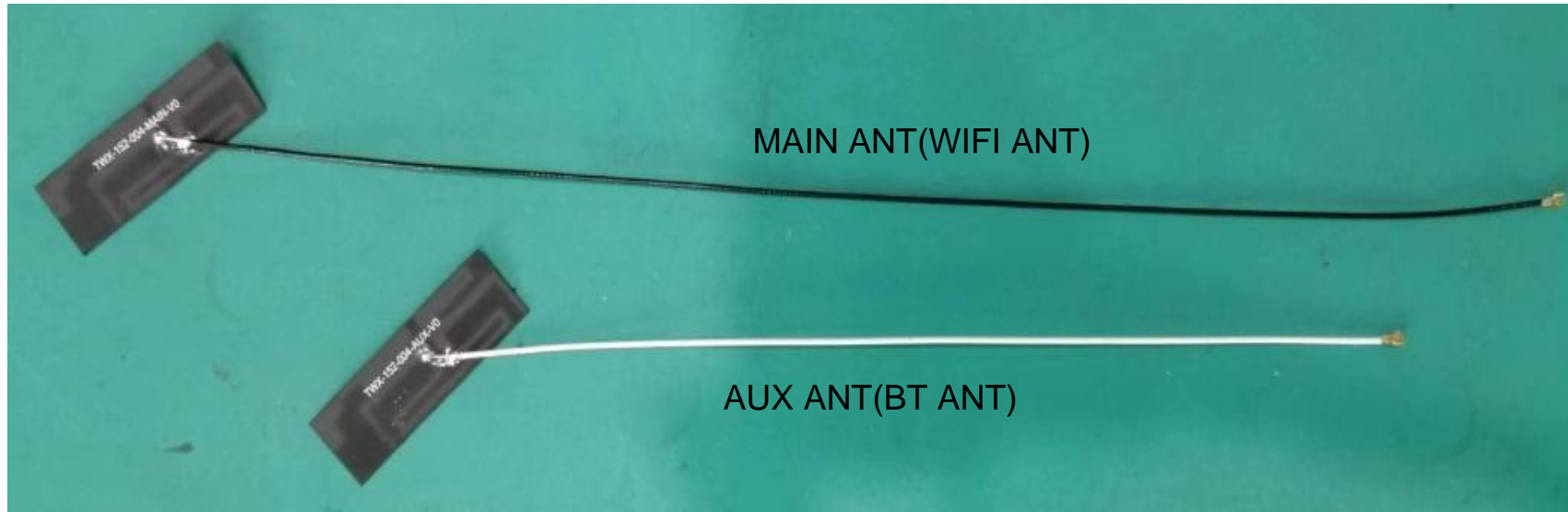
- 1 : Antenna Overview & Dimension
- 2 : The test project
 - 2.1 Antenna Matching Network
 - 2.2 VSWR
 - 2.3 Gain & Efficiency
 - 2.4 3D Date
 - 2.5 The Free Space 3D Date/The Free Space 2D Date

Antenna



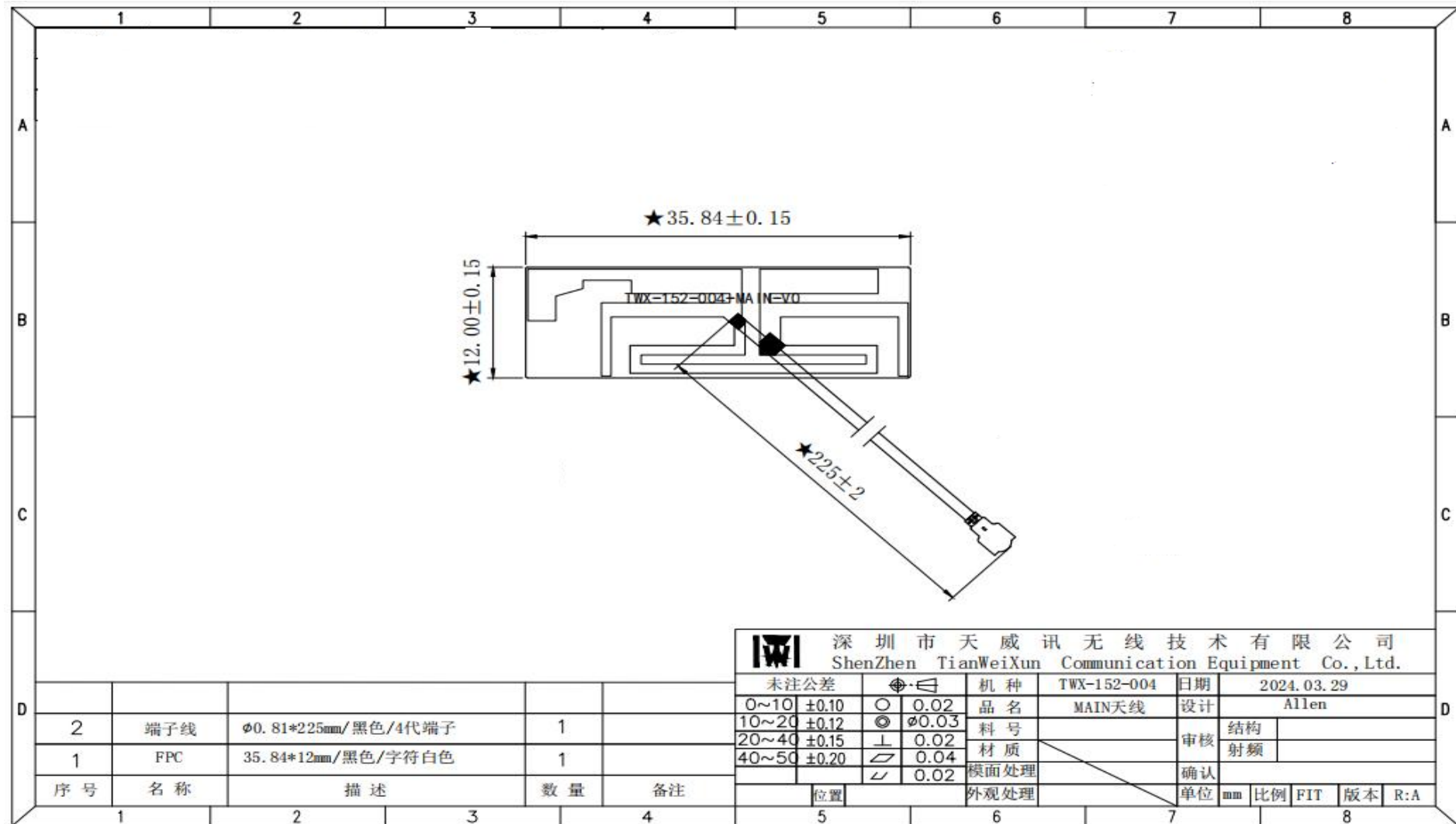
Location	Description
Shunt 01	N/A
Series	N/A
Shunt 02	N/A

Physical image of antenna



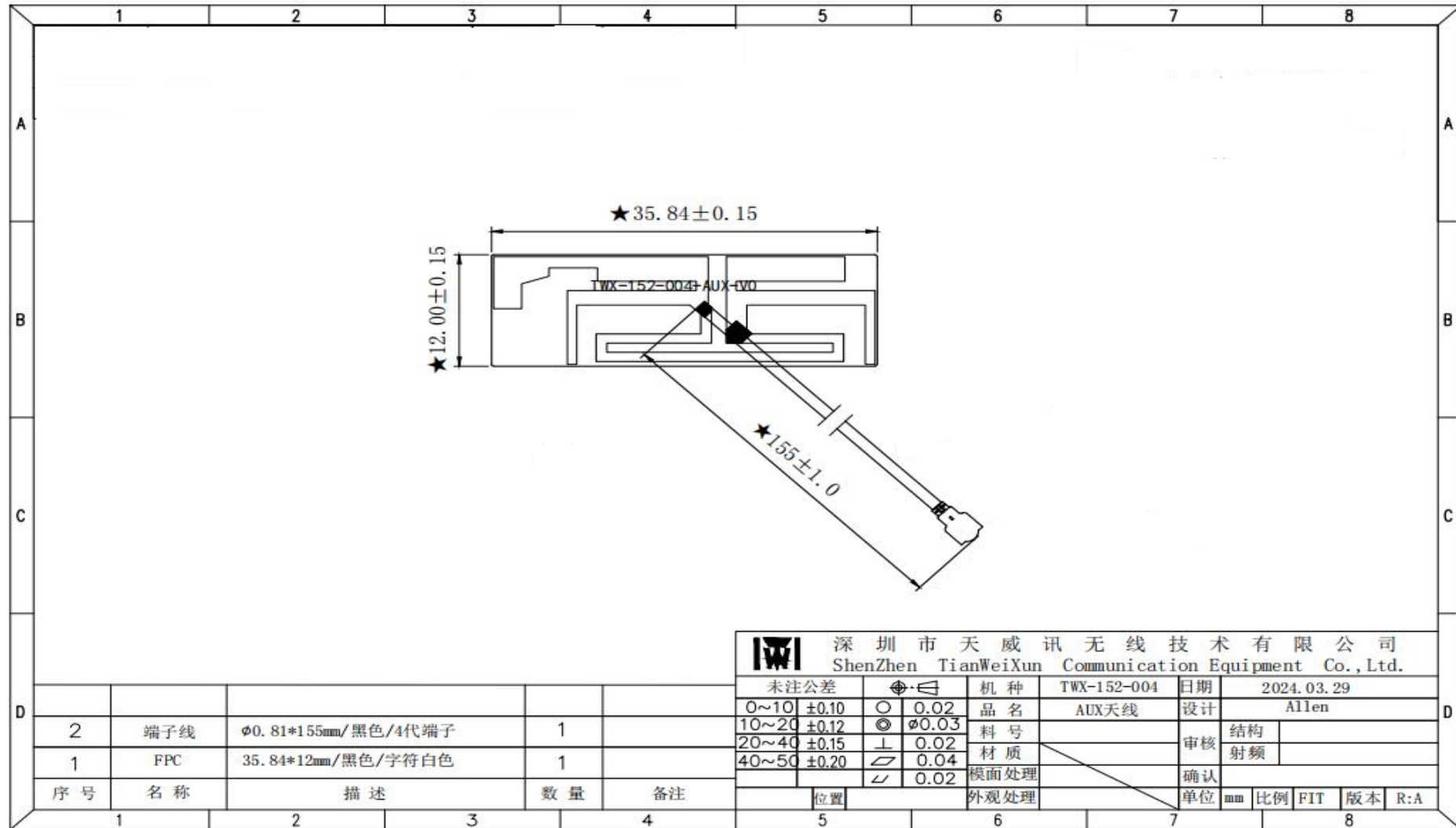


Antenna size diagram (WIFI ANT)





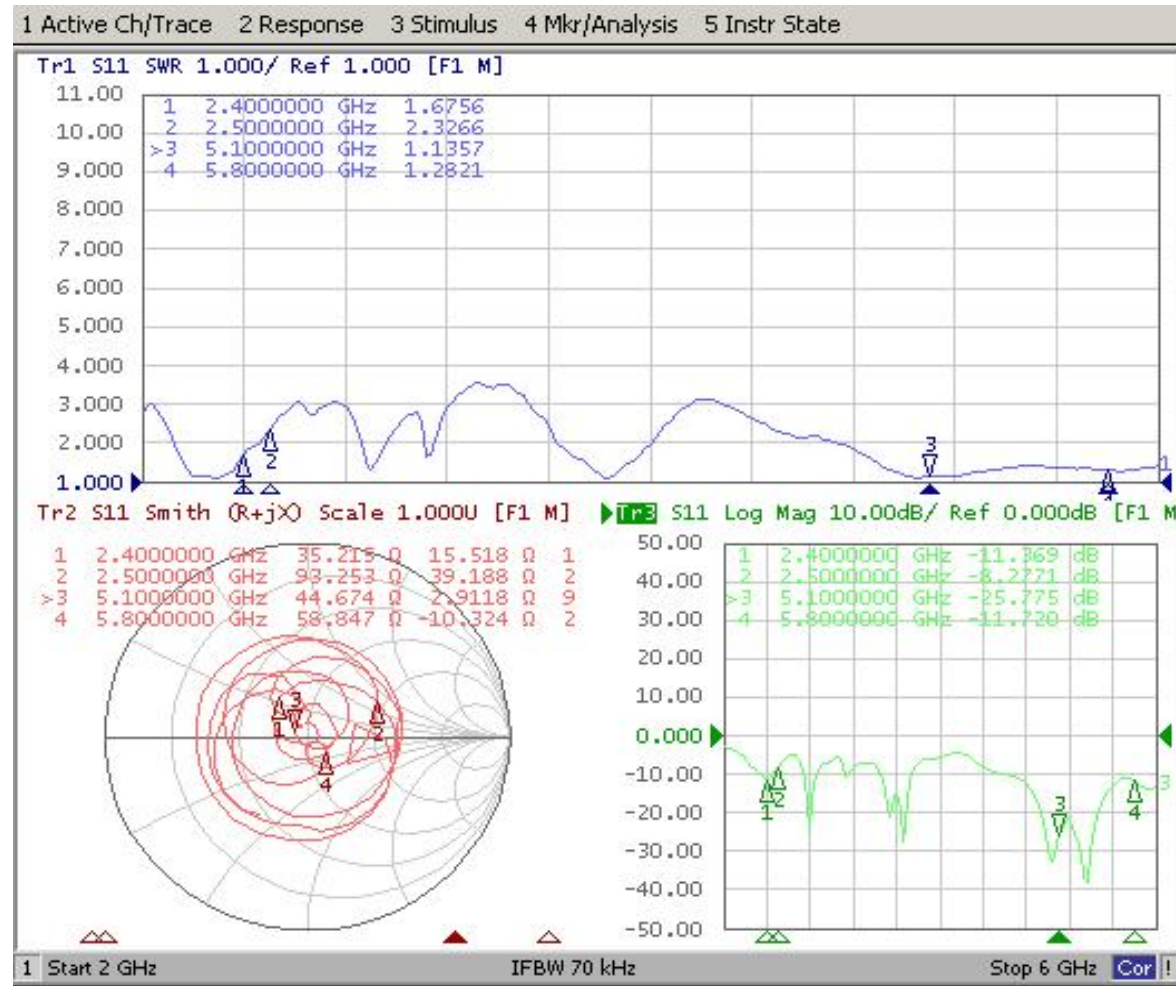
Antenna size diagram (BT ANT)



深圳市天威讯无线技术有限公司 ShenZhen TianWeiXun Communication Equipment Co., Ltd.									
未注公差		ϕ 0.02 \ominus 0.03 \perp 0.02 \sphericalangle 0.04 \sphericalangle 0.02	机种	TWX-152-004	日期	2024.03.29			
2	端子线	ϕ 0.81*155mm/黑色/4代端子	1	品名	AUX天线	设计	Allen		
1	FPC	35.84*12mm/黑色/字符白色	1	料号		审核	结构		
序号	名称	描述	数量	备注	材质	确认	射频		
					模面处理	单位	mm	比例	FIT
					外观处理	版本	R:A		

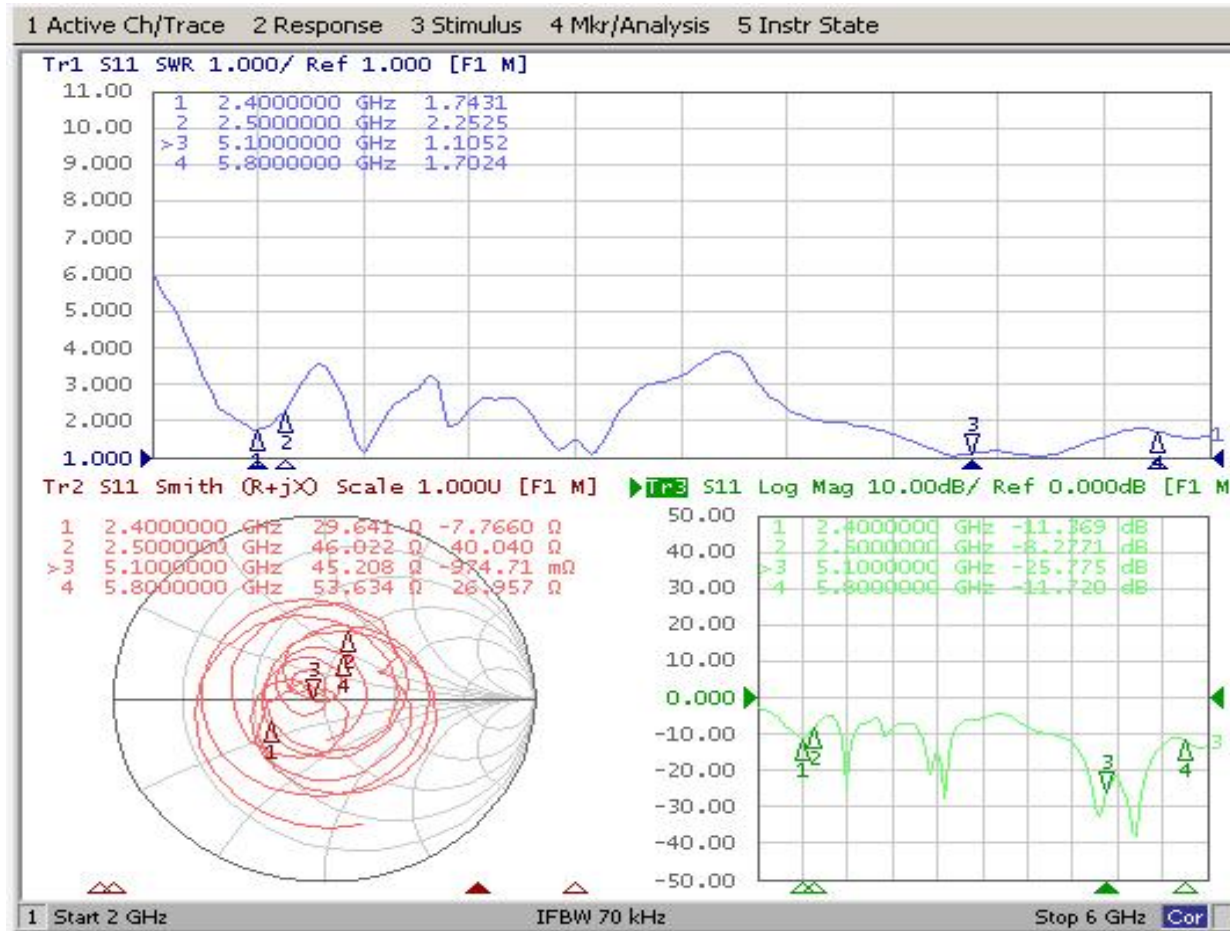


Passive data of MAIN antenna (WIFI ANT)



Test Point ID	Freq. (MHz)	Gain (dBi)	Efficiency (%)
1	2400.0	1.64	40.6%
2	2410.0	1.57	38.2%
3	2420.0	1.56	37.6%
4	2430.0	1.29	35.7%
5	2440.0	0.99	34.1%
6	2450.0	0.79	34.2%
7	2460.0	0.63	35.1%
8	2470.0	0.14	33.0%
9	2480.0	0.03	34.2%
10	2490.0	-0.43	31.4%
11	2500.0	0.16	33.3%
12	5100.0	4.79	52.7%
13	5135.0	4.42	48.2%
14	5170.0	4.15	46.2%
15	5205.0	4.13	47.5%
16	5240.0	3.71	43.7%
17	5275.0	3.42	43.9%
18	5310.0	3.32	43.7%
19	5345.0	3.15	42.7%
20	5380.0	3.07	43.6%
21	5415.0	3.44	45.2%
22	5450.0	3.83	44.5%
23	5485.0	4.07	44.9%
24	5520.0	4.03	44.6%
25	5555.0	3.87	43.2%
26	5590.0	3.96	42.8%
27	5625.0	3.64	41.5%
28	5660.0	3.36	38.9%
29	5695.0	2.64	38.2%
30	5730.0	1.96	35.3%
31	5765.0	1.44	32.8%
32	5800.0	1.53	32.1%

Passive data of AUX antenna (BT ANT)



Test Point ID	Freq. (MHz)	Gain (dBi)	Efficiency (%)
1	2400.0	-0.24	34.7%
2	2410.0	-0.75	33.7%
3	2420.0	-1.10	33.2%
4	2430.0	-0.85	32.7%
5	2440.0	-0.63	32.0%
6	2450.0	-0.26	33.4%
7	2460.0	0.09	35.4%
8	2470.0	-0.10	33.4%
9	2480.0	0.06	35.0%
10	2490.0	-0.10	33.3%
11	2500.0	-0.07	34.7%
12	5100.0	5.91	52.3%
13	5135.0	5.73	49.2%
14	5170.0	5.54	47.7%
15	5205.0	5.81	49.3%
16	5240.0	5.42	46.2%
17	5275.0	5.36	46.4%
18	5310.0	5.25	46.3%
19	5345.0	4.85	44.6%
20	5380.0	4.87	44.4%
21	5415.0	4.88	44.8%
22	5450.0	4.38	42.7%
23	5485.0	3.99	41.7%
24	5520.0	3.63	40.8%
25	5555.0	3.34	40.1%
26	5590.0	3.02	38.5%
27	5625.0	3.82	40.7%
28	5660.0	3.66	39.3%
29	5695.0	3.75	41.8%
30	5730.0	3.69	40.2%
31	5765.0	3.44	37.9%
32	5800.0	3.41	38.6%