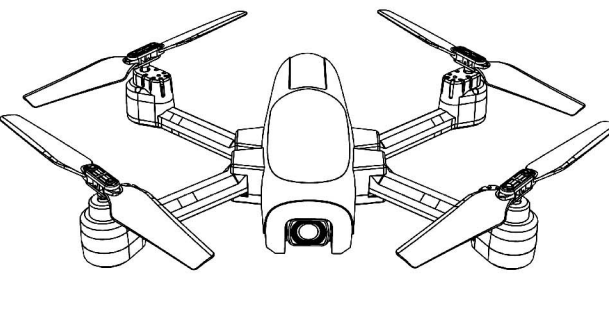


## USER USE INSTRUCTIONS



— GPS FUNCTION —

NOTE: THIS EQUIPMENT HAS BEEN TESTED TO COMPLY WITH THE LIMITS FOR A CLASS B DIGITAL DEVICE, PURSUANT TO PART 15 OF THE FCC RULES. THESE LIMITS ARE DESIGNED TO PROVIDE REASONABLE PROTECTION AGAINST HARMFUL INTERFERENCE IN A RESIDENTIAL INSTALLATION. THIS EQUIPMENT GENERATES USES AND CAN MODULATE RADIO FREQUENCY ENERGY AND, IF NOT INSTALLED AND USED IN ACCORDANCE WITH THE INSTRUCTIONS, MAY CAUSE HARMFUL INTERFERENCE TO RADIO COMMUNICATIONS. HOWEVER, THERE IS NO GUARANTEE THAT INTERFERENCE WILL NOT OCCUR IN A PARTICULAR INSTALLATION. IF SUCH INTERFERENCE DOES CAUSE HARMFUL INTERFERENCE TO RADIO OR TELEVISION RECEPTION, WHICH CAN BE DETERMINED BY TURNING THE EQUIPMENT OFF AND ON, THE USER IS ENCOURAGED TO TRY TO CORRECT THE INTERFERENCE BY ONE OR MORE OF THE FOLLOWING MEASURES:

- REORIENT OR RELOCATE THE RECEIVING ANTENNA.
- INCREASE THE SEPARATION BETWEEN THE EQUIPMENT AND RECEIVER.
- CONNECT THE EQUIPMENT INTO AN OUTLET ON A CIRCUIT DIFFERENT FROM THAT TO WHICH THE RECEIVER IS CONNECTED.
- CONSULT THE DEALER OR AN EXPERIENCED RADIO/TV TECHNICIAN FOR HELP.

CHANGES OR MODIFICATIONS NOT EXPRESSLY APPROVED BY THE PARTY RESPONSIBLE FOR COMPLIANCE COULD VOID THE USER'S AUTHORITY TO OPERATE THE EQUIPMENT.

## CONTENTS

Disclaimer and safety instructions	1 ~ 3
List of accessories	4
Introduction to aircraft	5
Introduction to remote control	6
Operation mode switching	6
Installation instructions	8 ~ 9
1. Propeller	8
2. Camera	9
Battery Charging Guidance	10
Flight operation guidance	11 ~ 16
1. Download/install APP	11
2. Connect Wi-Fi	11
3. Frequency comparison	12
4. Geomagnetic calibration	13
5. Gyroscope calibration	14
6. GPS/optical flow mode	15 ~ 16
7. Motor unloading	17
8. One button takeoff/landing	17
Product function analysis	18 ~ 25
1. APP application	18 ~ 19
2. Novice mode	20
3. Speed switch	21
4. Emergency stop	21
5. Headless mode	22 ~ 23
6. One click return	24 ~ 25
Basic parameter information	26 ~ 27

### ▲ THE WARNING MESSAGE

In order to ensure the electromagnetic environment of aviation radio station, it is forbidden to use all kinds of model remote control in the area with the center of the airport runway and the radius of 5000 meters. During the period of radio control order issued by the relevant state department, the use of the model remote control shall be stopped as required in the area.

### DISCLAIMER AND SAFETY NOTES

In order to make it easier and safer for you to use this product, please read the contents of this manual carefully before using this product, and keep this manual for future reference.

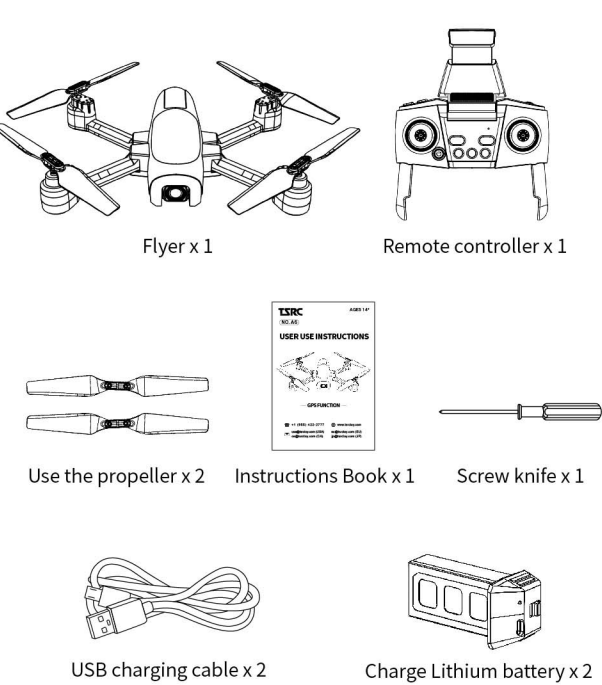
### DISCLAIMER AND SAFETY NOTES

- To protect the legitimate rights and interests of users, please read carefully the instructions, disclaimers and safety instructions we provide with this product before using this product.
- This product is not suitable for persons under the age of 14. Persons under the age of 14 must use it under the supervision and guidance of an adult with UAV flying experience.
- Once you start using the product, it is deemed that you have read, understood, approved and accepted all the terms and contents of the instruction manual, disclaimer and safety notice of the product.
- When using this product, please strictly comply with and follow the requirements in the instructions and safety instructions, including but not limited to, for all personal injury, accident, property loss, legal dispute and other adverse events resulting from the violation of the safety instructions or installation facts, the user shall bear the relevant responsibilities and losses, and our company and the agent shall not bear any responsibility.
- Our company and the agent shall not be responsible for any violation of laws and regulations directly or indirectly caused by users using this product.

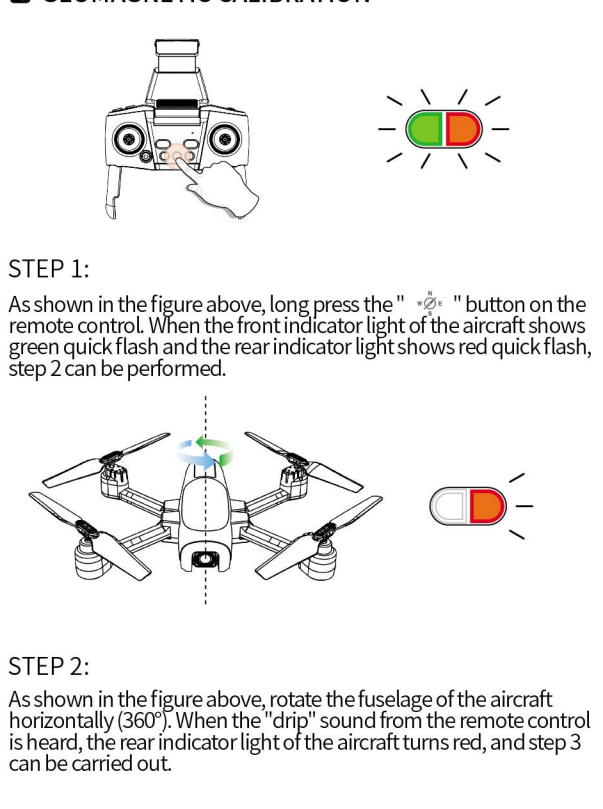
### SAFETY INSTRUCTIONS

- The product is not suitable for persons under the age of 14 and others who do not have full capacity for risk conduct.
- This product has the high speed rotating propeller and the powerful flight power, has the certain danger in the operation. Do not approach or touch the product while in operation.
- When using this product, please stay away from airports, railways, highways, high-rise buildings, power lines and other dangerous environment.
- When using this product, please keep away from the mobile phone base station, high-power transmission equipment and other high electromagnetic interference environment.
- Do not use batteries that are swollen, leaked, or damaged.
- Do not use the product in rain, lightning, sand, fog, snow, wind, low temperature and other harsh environments.
- This product is not waterproof design, do not operate this product near water.
- When operating this product, always maintain a safe distance of about 10 meters between the drone and humans or animals.
- Keep the drone within visual range of the operator at all times.
- Do not hover or fly this product over people. Do not startle others for fun.
- Do not operate this product near children's playing areas.
- Do not use this product to cause vehicles or affect the normal operation of vehicles.
- Do not turn off the motor when the product is flying in the air unless emergency.
- This product can not be used in the case of alcohol, tobacco, fatigue, taking drugs, physical discomfort, etc.
- Please check the product before each use, including but not limited to part firmness, cracks and wear of the body and propeller, battery power, validity of the indicator light, etc. If an anomaly occurs, stop using the component and replace the component immediately.
- Accidents may happen to drones in abnormal working conditions. Do not start the propeller or brake the light.
- Do not attempt to prevent any moving part of the product from working.
- Do not modify this product, or use this product for purposes other than the original design.
- Do not operate this product in the no-fly zone of laws and regulations.

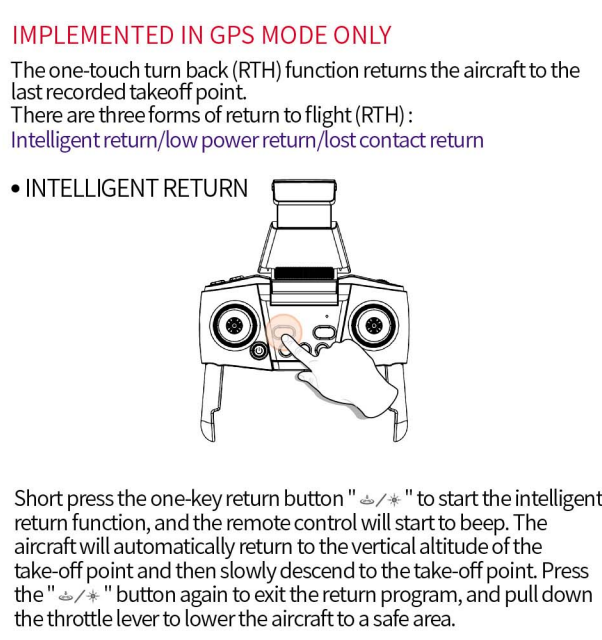
### INCLUDED IN PACKAGE



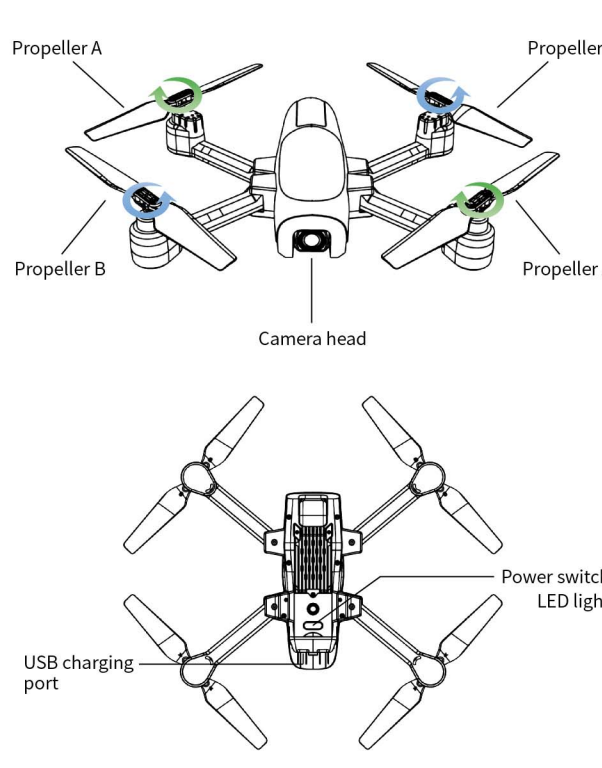
### ■ GEOMAGNETIC CALIBRATION



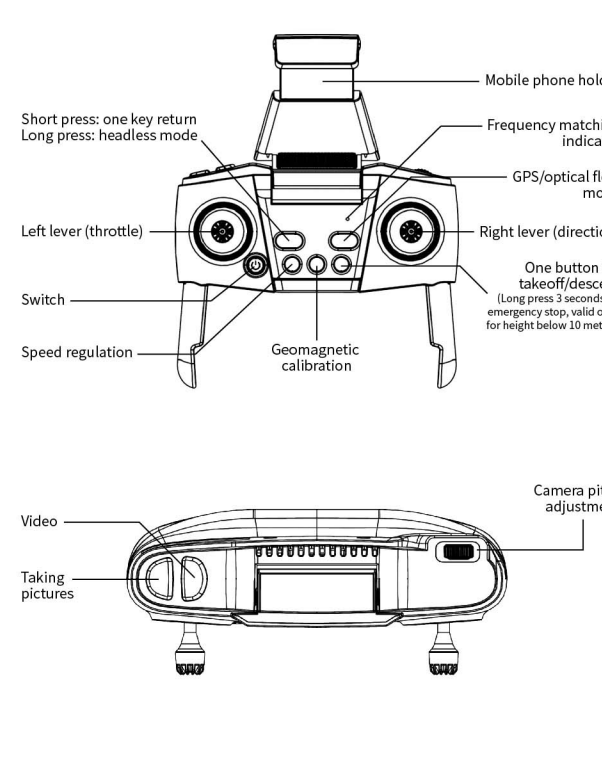
### ■ A KEY TO RETURN



### INTRODUCTION TO FLYERS

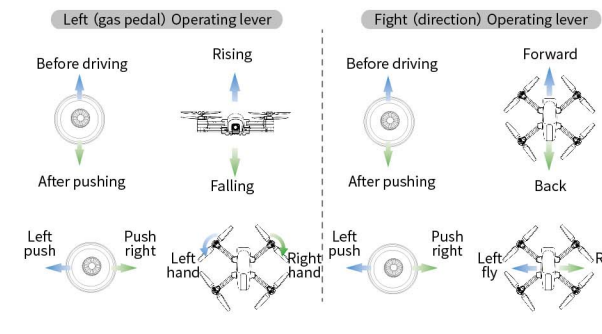


### INTRODUCTION TO REMOTE CONTROL



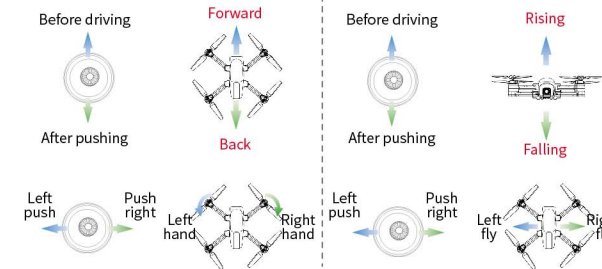
### OPERATION MODE SWITCHING

#### ● MODE 2 (DEFAULT MODE)

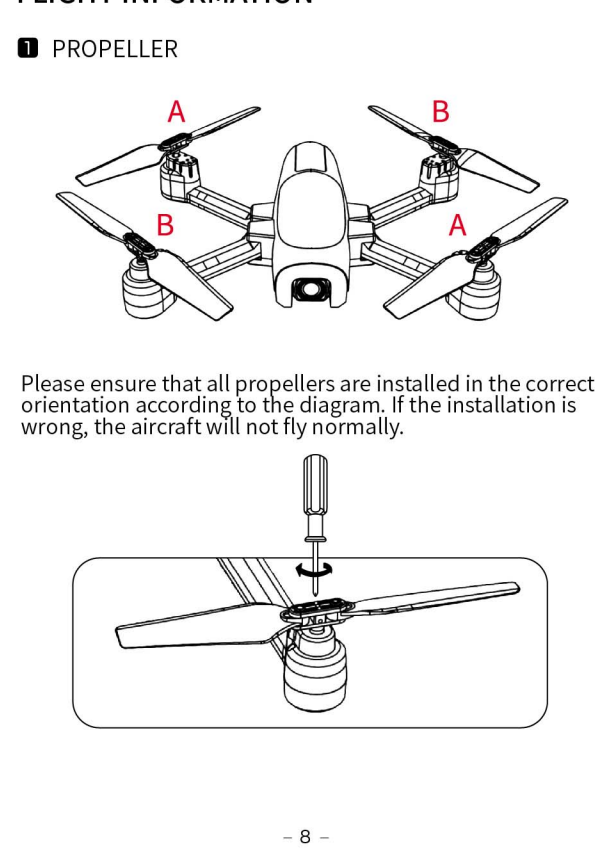


#### ● MODE 1

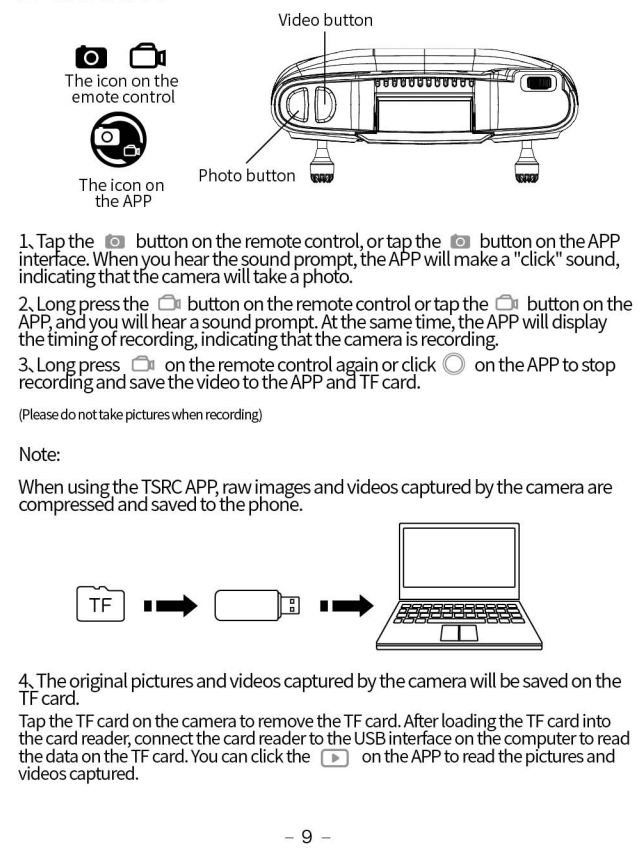
YOU CAN ENTER MODE 1 BY HOLDING DOWN THE "PHOTO" BUTTON AND TURNING ON THE POWER OF THE REMOTE CONTROL.



### FLIGHT INFORMATION

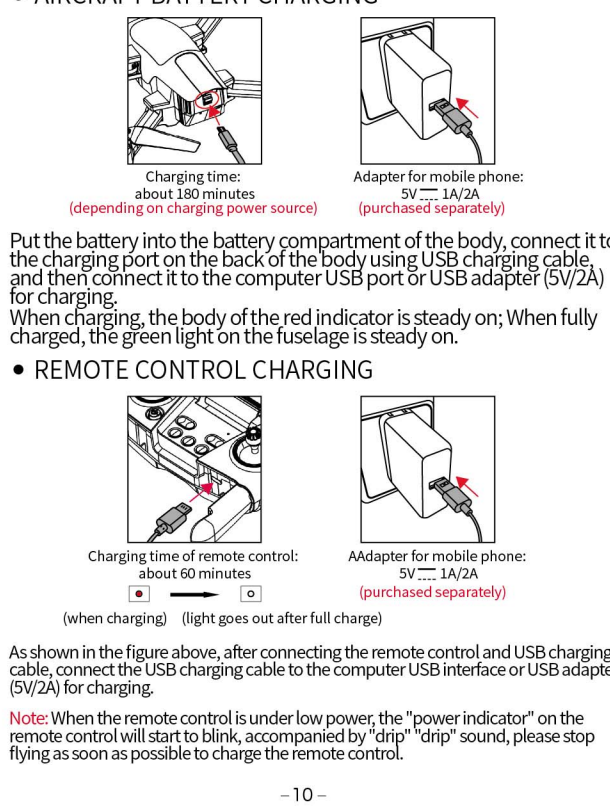


### ■ CAMERA

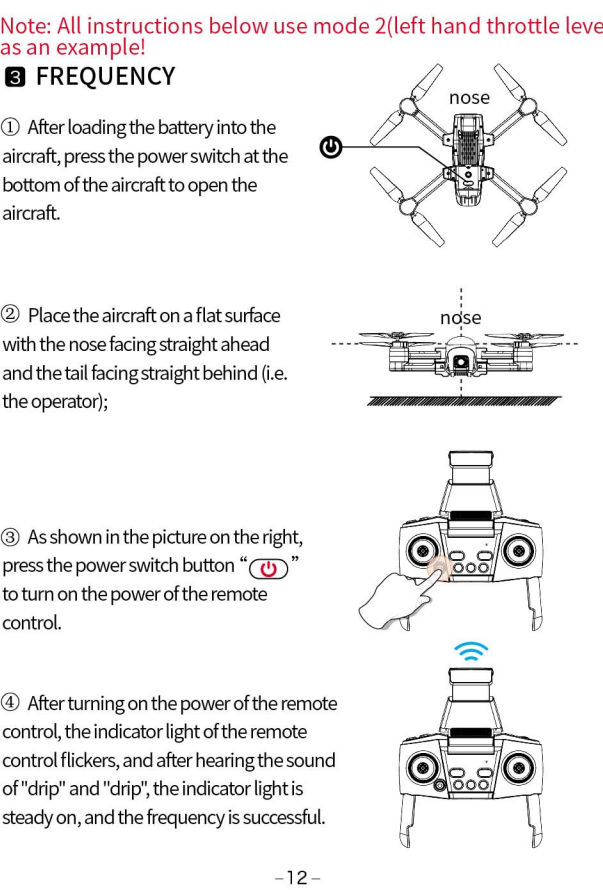


### BATTERY CHARGING GUIDE

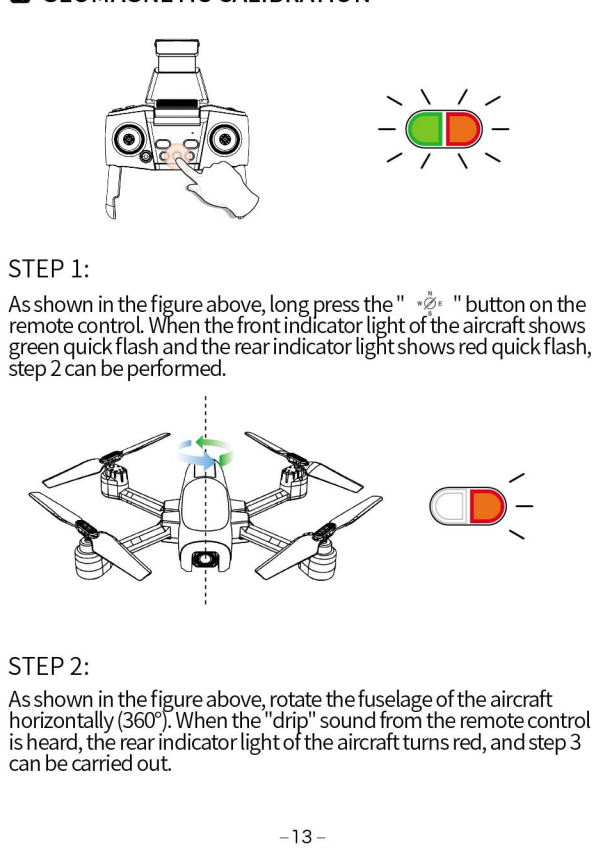
#### ● AIRCRAFT BATTERY CHARGING



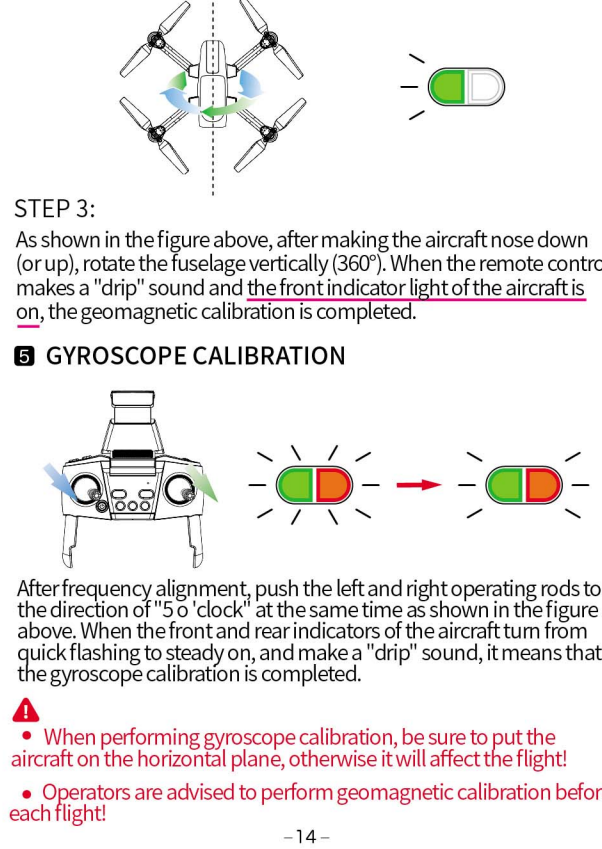
### APP INSTALLATION AND OPERATION



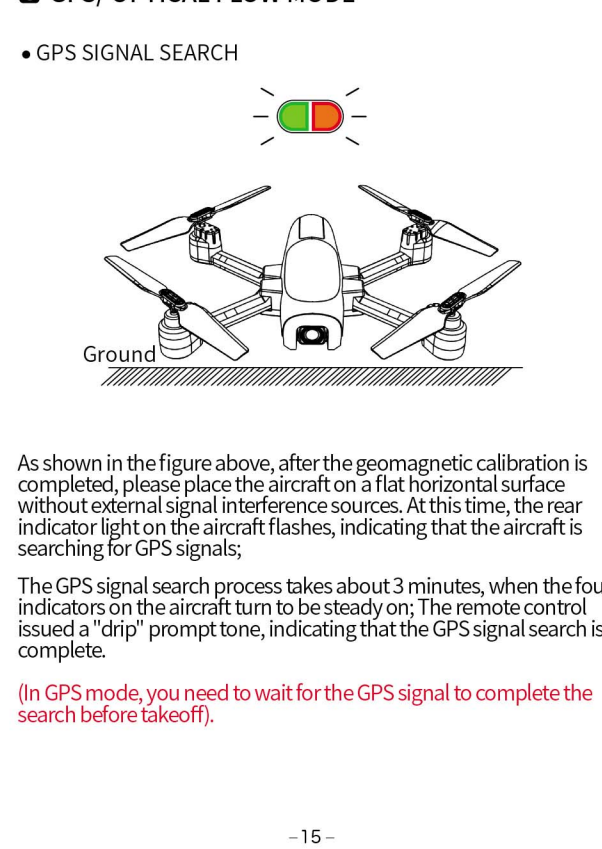
### ■ GEOMAGNETIC CALIBRATION



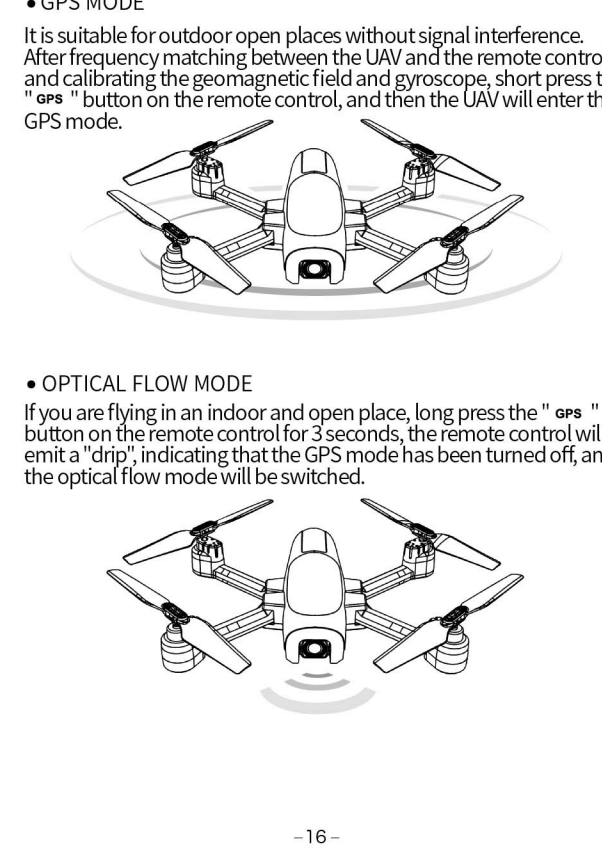
### ■ GYROSCOPE CALIBRATION



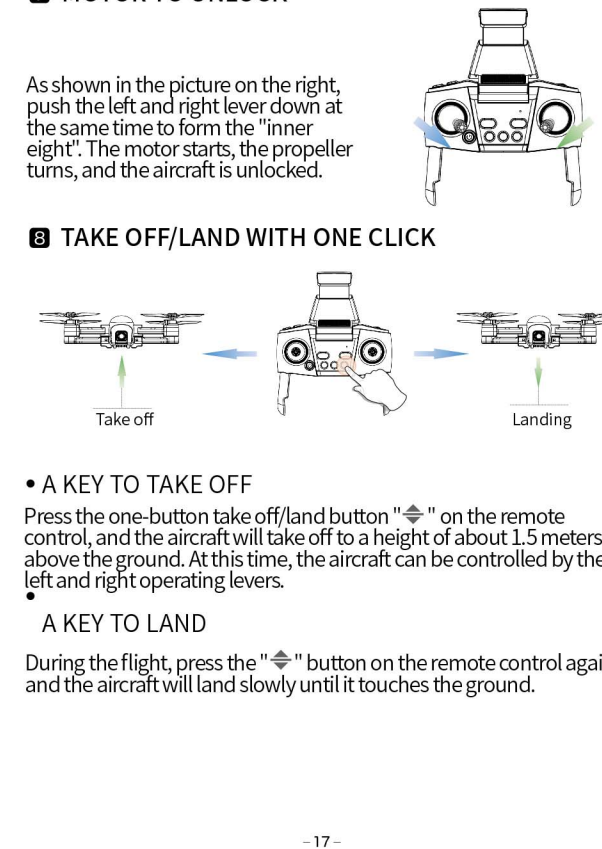
### ■ GPS / OPTICAL FLOW MODE



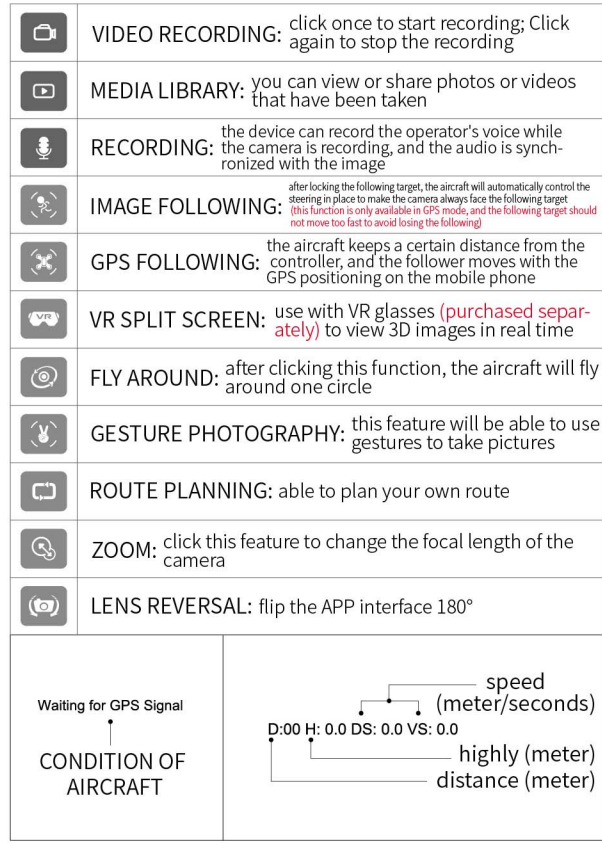
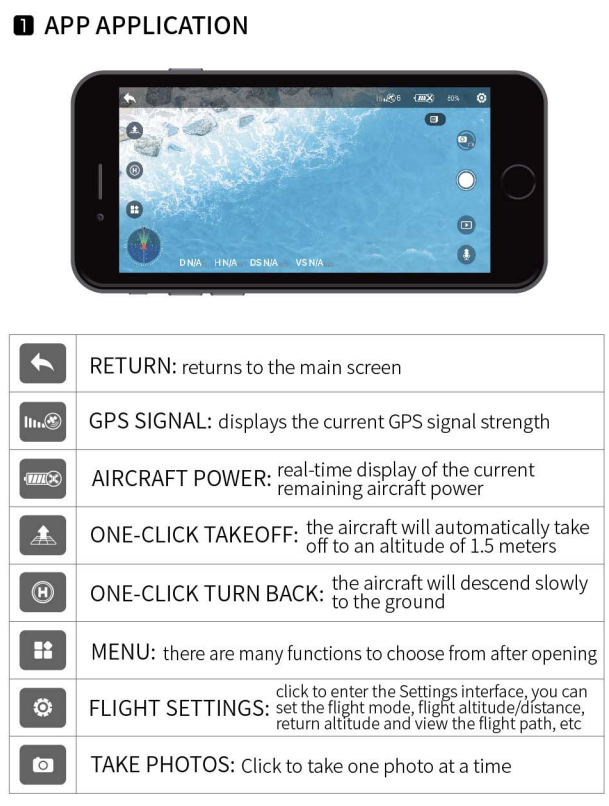
### ■ GPS MODE



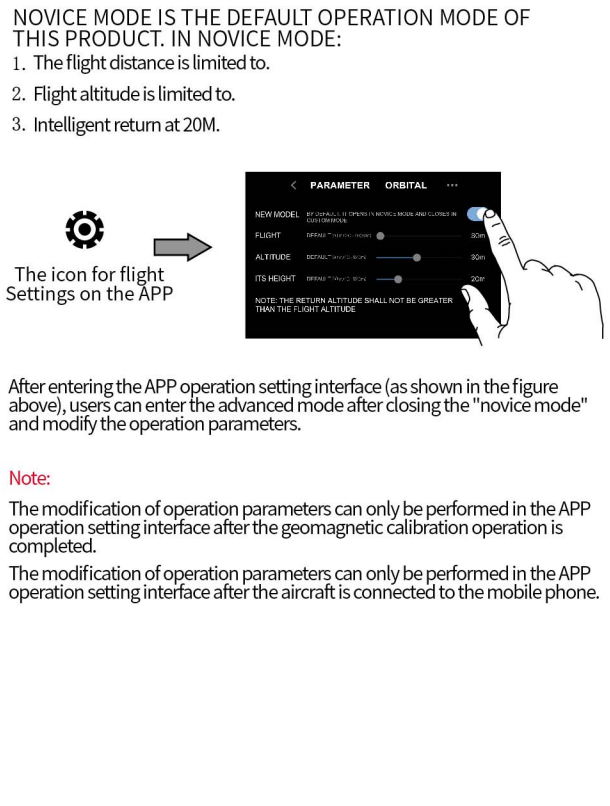
### ■ MOTOR TO UNLOCK



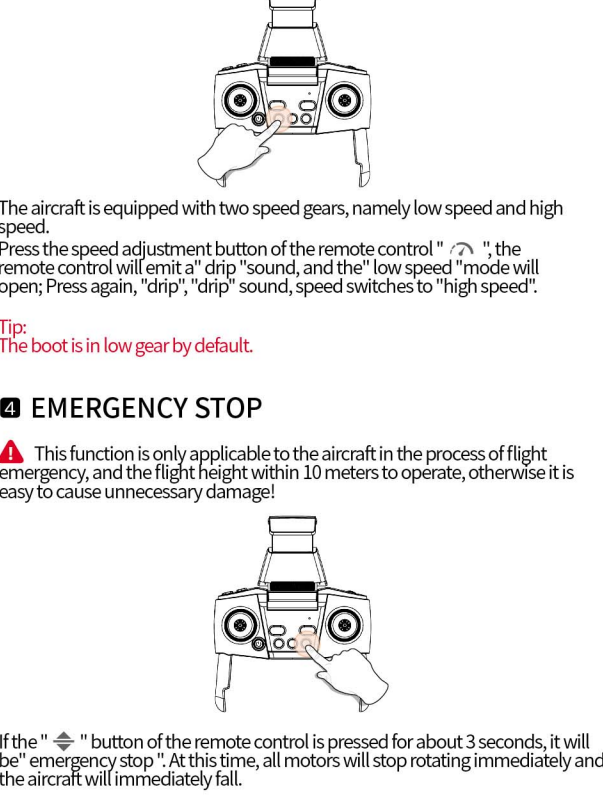
### PRODUCT FUNCTION ANALYSIS



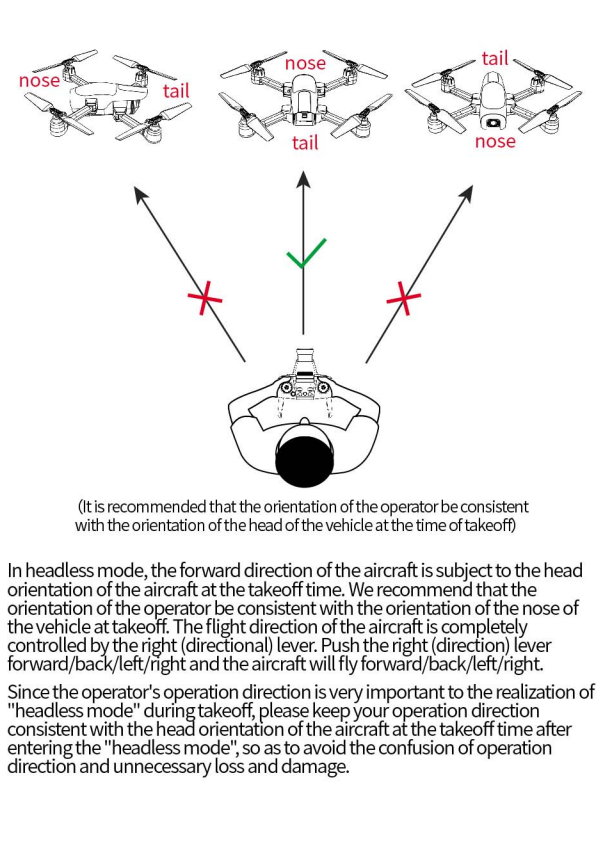
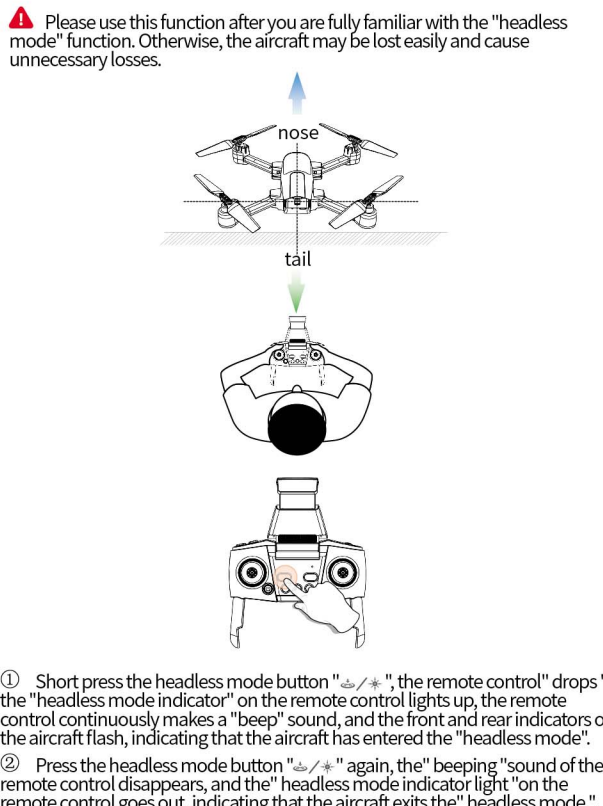
### ■ NEW MODEL



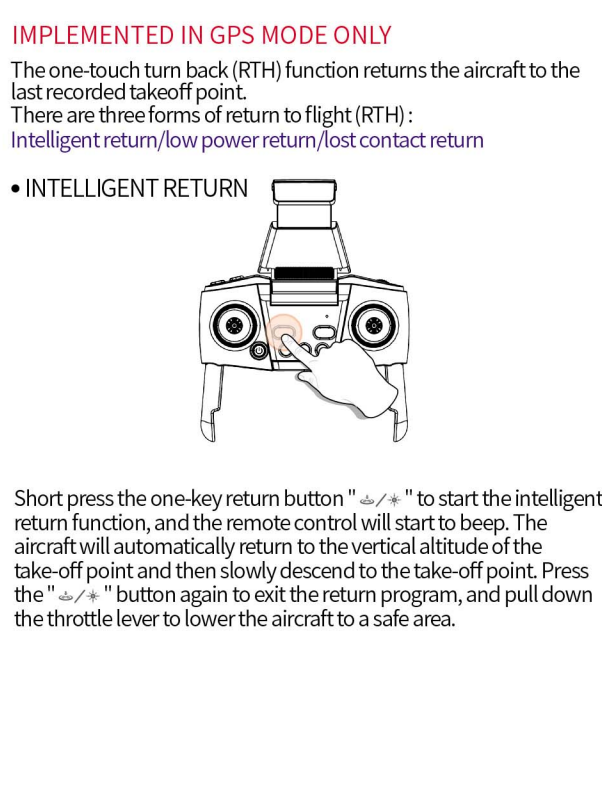
### ■ SPEED SWITCH



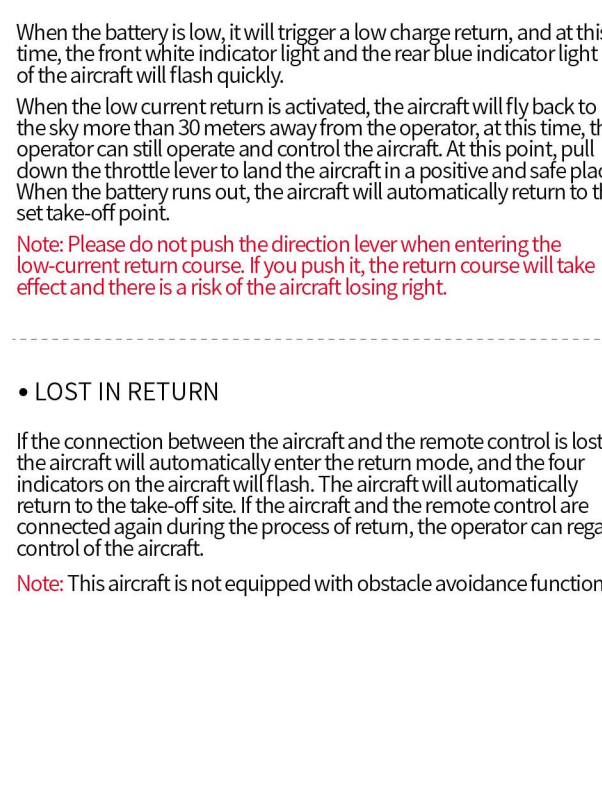
### ■ HEADLESS MODE



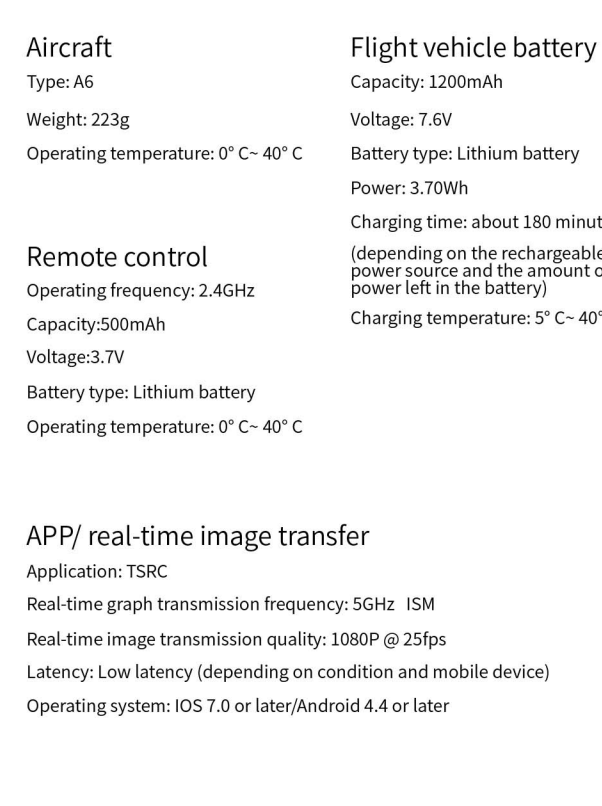
### ■ A KEY TO RETURN



### ■ LOW ELECTRICITY RETURN



### BASIC PARAMETER INFORMATION



### Camera

