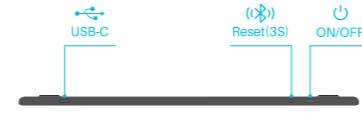


INSPIROY FREGO

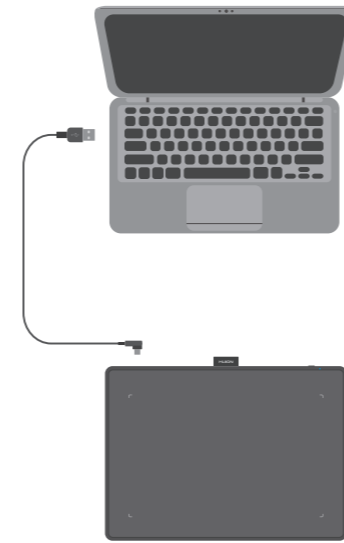
L310 / L610

- Quick Start Guide
- Guide de démarrage rapide
- Schnellstartanleitung
- クイックスタートガイド
- 빠른 시작 안내서
- Guida rapida
- Guia de inicio rápido
- Guia de inicio rápido
- Краткое руководство пользователя
- Przewodnik szybkiego startu
- Panduan Singkat



1 Wired Connection

- Connexion filaire
- Kabelgebundene Verbindung
- 有線接続
- 유선 연결
- Connessione cablata
- Conexión Por Cable
- Conexão por Fio
- Проводное соединение
- Połączenie Kablowe
- Koneksi dengan Kabel



2 Bluetooth Connection

- Connexion Bluetooth
- Bluetooth Verbindung
- Bluetooth-Verbindung
- 블루투스 연결
- Connessione Bluetooth
- Conexión Bluetooth
- Conexão Bluetooth
- Подключение Bluetooth
- Połączenie Bluetooth
- Koneksi Bluetooth



3 www.huion.com/download

- Install Driver
- Installation du Pilote
- Installieren des Treibers
- ドライバーのインストール
- 드라이버 설치
- Installazione dei Driver
- Instalar el Driver
- Instalação do Driver
- Установка драйвера
- Instalacja sterownika
- Cara Instalasi driver

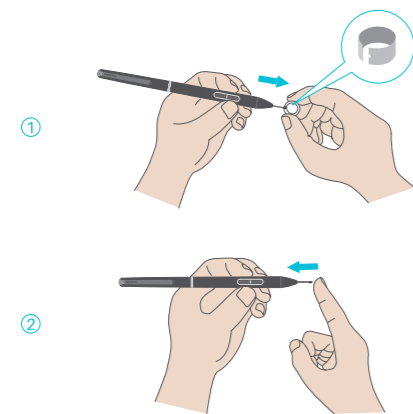


- User Manual
- Manuel de l'utilisateur
- Benutzerhandbuch
- ユーザーマニュアル
- 사용자 매뉴얼
- Manuale d'uso
- Manual de usuario
- Instrukcja obsługi
- Руководство пользователя
- Instrukcja obsługi
- Panduan pengguna



4 Replace the Pen Nib

- Remplacer la Pointe du Stylet
- Wechseln der Stiftspitze
- ペン先の交換
- 펜촉 교체
- Sostituzione del pennino
- Recambie la Punta del Bolígrafo
- Substituir a Ponta da Caneta
- Замена наконечника пера
- Wymiana końcówki pióra
- Cara Mengganti Mata Pen (Nib)



FCC Warning

This device complies with part 15 of the FCC Rules. Operation is subject to the following two conditions: (1) This device may not cause harmful interference, and (2) this device must accept any interference received, including interference that may cause undesired operation.

Any Changes or modifications not expressly approved by the party responsible for compliance could void the user's authority to operate the equipment.

Note: This equipment has been tested and found to comply with the limits for a Class B digital device, pursuant to part 15 of the FCC Rules. These limits are designed to provide reasonable protection against harmful interference in a residential installation. This equipment generates uses and can radiate radio frequency energy and, if not installed and used in accordance with the instructions, may cause harmful interference to radio communications. However, there is no guarantee that interference will not occur in a particular installation. If this equipment does cause harmful interference to radio or television reception, which can be determined by turning the equipment off and on, the user is encouraged to try to correct the interference by one or more of the following measures:

- Reorient or relocate the receiving antenna.
- Increase the separation between the equipment and receiver.
- Connect the equipment into an outlet on a circuit different from that to which the receiver is connected.
- Consult the dealer or an experienced radio/TV technician for help.

The device has been evaluated to meet general RF exposure requirement. The device can be used in portable exposure condition without restriction.

L310
FCC ID: 2ABIG-T242
L610
FCC ID: 2ABIG-T241

IC Warning

This device complies with Industry Canada's licence-exempt RSSs. Operation is subject to the following two conditions:
(1) This device may not cause interference; and
(2) This device must accept any interference, including interference that may cause undesired operation of the device.
The device has been evaluated to meet general RF exposure requirement. The device can be used in portable exposure condition without restriction.

Cet appareil est conforme aux CNR exemptés de licence d'Industrie Canada. Son fonctionnement est soumis aux deux conditions suivantes:
(1) Ce dispositif ne peut causer d'interférences; et
(2) Ce dispositif doit accepter toute interférence, y compris les interférences qui peuvent causer un mauvais fonctionnement de l'appareil.

Le dispositif a été conçu pour répondre à la demande générale de radioexposition.

IC: 29018-T241

CE Maintenance

1. Risk of explosion if battery is replaced by an incorrect type. Dispose of used batteries according to the instructions.
2. The product shall only be connected to a USB interface of version USB2.0.
3. EUT Operating temperature range: -10° C to 40° C.
4. The device complies with RF specifications when the device used at 0mm from your body.

Declaration of Conformity

Shenzhen Huion Trend Technology Co., Ltd. hereby declares that this Creative Pen Tablet is in compliance with the essential requirements and other relevant provisions of Directive 2014/53/EU in accordance with Article 10(2) and Article 10(10). This product is allowed to be used in all EU member states.



IM.00L310-0-000000-0

Shenzhen Huion Trend Technology Co., Ltd.
☎ +86-755-32998548
✉ service@huion.com
🌐 www.huion.com
© www.huion.com/support

Warranty Card

Product Information

Product Name _____
Buying Date _____
Model _____

Dealer Information

Name _____
Sale Date _____
Phone _____
Address _____

User Information

Name _____
Email _____
Phone _____
Address _____