

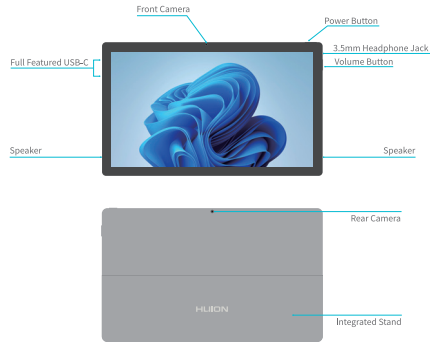


Kamvas Studio 16

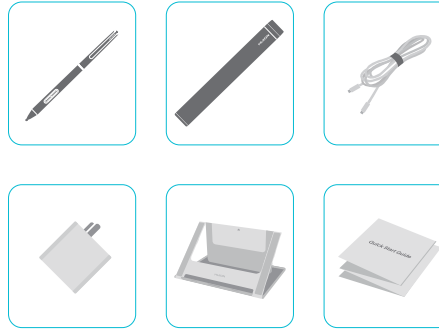
- Quick Start Guide
 - Guide de démarrage rapide
 - Schnellstartanleitung
 - クイックスタートガイド
 - 빠른 시작 안내서
 - Guida rapida
 - 快速指南
- Guía de inicio rápido
 - Guia de início rápido
 - Краткое руководство пользователя
 - دليل البدء السريع
 - Przewodnik szybkiego startu
 - Panduan Singkat
 - 快速指南



Appearance



Accessories



Installation



A

www.huion.com/download



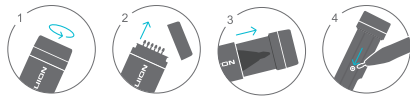
- Install Driver
 - Installation du Pilote
 - Installieren des Treibers
 - ドライバーのインストール
 - 드라이버 설치
 - Instalazione dei Driver
 - 安裝驱动
- Instalar el Driver
 - Instalação do Driver
 - Установка драйвера
 - تثبيت المشغل
 - Instalacja sterownika
 - Cara instalasi driver
 - 安裝驅動



- User Manual
 - Manuel de l'Utilisateur
 - Benutzerhandbuch
 - ユーザーマニュアル
 - 사용자 매뉴얼
 - Manuale d'uso
 - 用戶手冊
- Manual de usuario
 - Instrukcja obsługi
 - Руководство пользователя
 - دليل الاستخدام
 - Instrukcja obsługi
 - Panduan pengguna
 - 用戶手冊

Replace the Pen Nib

- Remplacer la Pointe du Stylet
 - Wechseln der Stiftspitze
 - 펜촉 교체
 - ペン先の交換
 - Sostituzione del pennino
 - 更換筆芯
- Recambie la Punta del Bolígrafo
 - Substituir a Ponta da Caneta
 - Замена наконечника пера
 - استبدال سن القلم
 - Wymiana końcówki pióra
 - Cara Mengganti Mata Pen (Nib)
 - 更換筆芯



FCC Warning

This device complies with part 15 of the FCC Rules. Operation is subject to the following two conditions: (1) This device may not cause harmful interference, and (2) this device must accept any interference received, including interference that may cause undesired operation.

Any Changes or modifications not expressly approved by the party responsible for compliance could void the user's authority to operate the equipment.

Note: This equipment has been tested and found to comply with the limits for a Class B digital device, pursuant to part 15 of the FCC Rules. These limits are designed to provide reasonable protection against harmful interference in a residential installation. This equipment generates uses and can radiate radio frequency energy and, if not installed and used in accordance with the instructions, may cause harmful interference to radio communications. However, there is no guarantee that interference will not occur in a particular installation. If this equipment does cause harmful interference to radio or television reception, which can be determined by turning the equipment off and on, the user is encouraged to try to correct the interference by one or more of the following measures:

- Reorient or relocate the receiving antenna.
- Increase the separation between the equipment and receiver.
- Connect the equipment into an outlet on a circuit different from that to which the receiver is connected.
- Consult the dealer or an experienced radio/TV technician for help.

IC Warning

This device complies with Industry Canada's ICES. Operation is subject to the following two conditions: (1) This device may not cause interference; and (2) This device must accept any interference, including interference that may cause undesired operation of the device.

L'émetteur/récepteur exempt de licence contenu dans le présent appareil est conforme aux CNR d'Innovation, Sciences et Développement économique Canada applicables aux appareils radio exempts de licence. L'exploitation est autorisée aux deux conditions suivantes:

- 1) L'appareil ne doit pas produire de brouillage;
- 2) L'appareil doit accepter tout brouillage radioélectrique subi, même si le brouillage est susceptible d'en compromettre le fonctionnement.

The device has been tested and comply with FCC/ISED SAR limits.
L'appareil a été testé et est conforme aux restrictions FCC/ISED SAR.

B