



東莞市仕研電子通訊有限公司

DONGGUAN SEYA ELECTRONIC COMMUNICATION CO.,LTD

Address: Shiyuan Industrial Park, 26 Juxiang First Road, Dalang Alley Management Zone, Dongguan

Antenna Parameter Testing Report

Model:Main SY-W90PE2296B050C-L01, Aux SY-W90PE2297B100C-L01

Aux: 23.9mm*17.4mm*100mm

Main: 26.9mm*16.9mm*50mm

Customer :	协诚创新	Report Date	2022.09.15
Project	158	Report Version	1.0
Product Description	WIFI	Prepared by	
Sample Version	A01	Approved by	

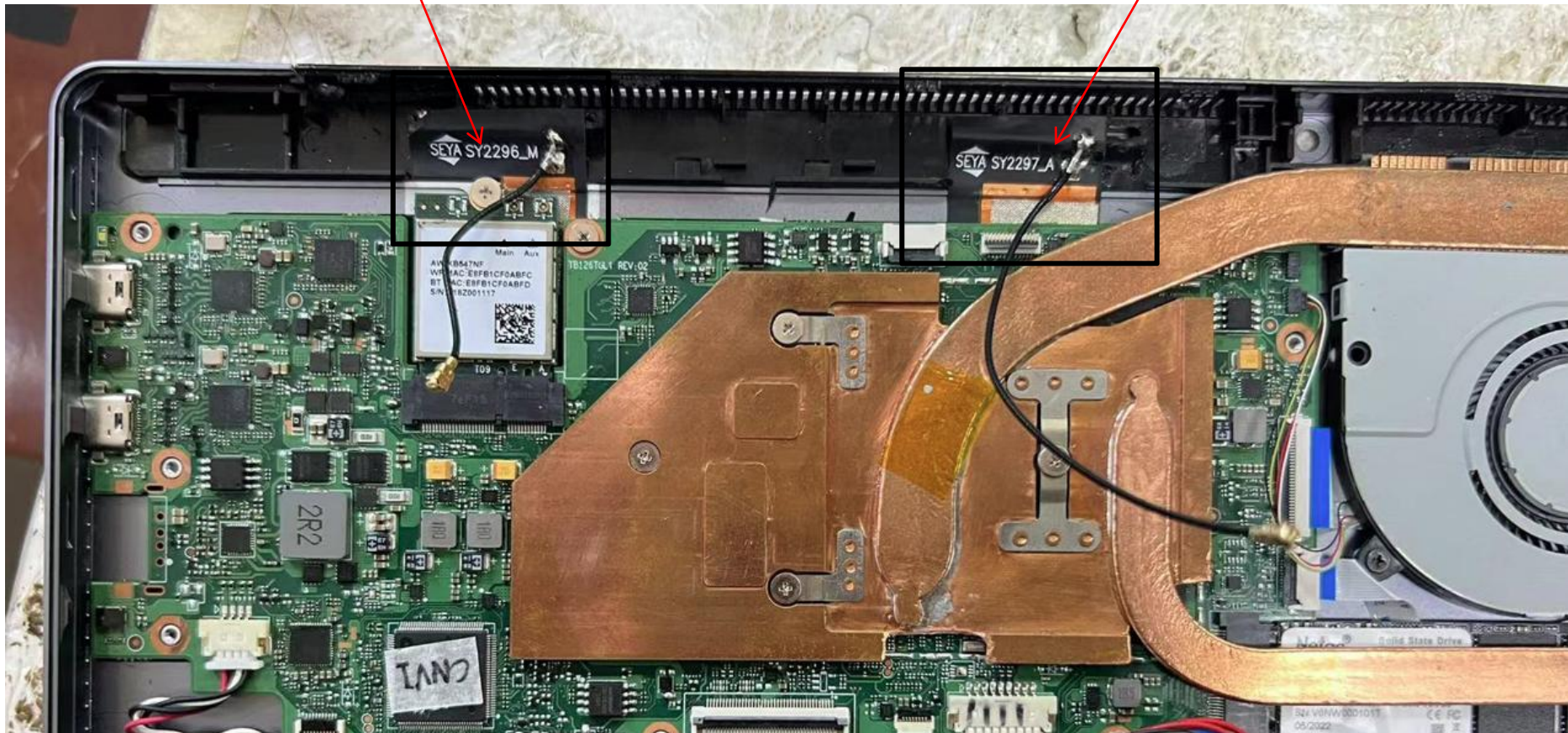
◆ Contents:

- ◆ 1. Testing Item & Equipment
- ◆ 2. Antenna Structure
- ◆ 3. Test Data
 - 3.1 S-Parameters
- ◆ 4. Antenna Gain Test
 - ◆ 4.1 Antenna Radiation Pattern
 - ◆ 4.2 Gain and Efficiency Test Data

2. Antenna Structure

ANT 1

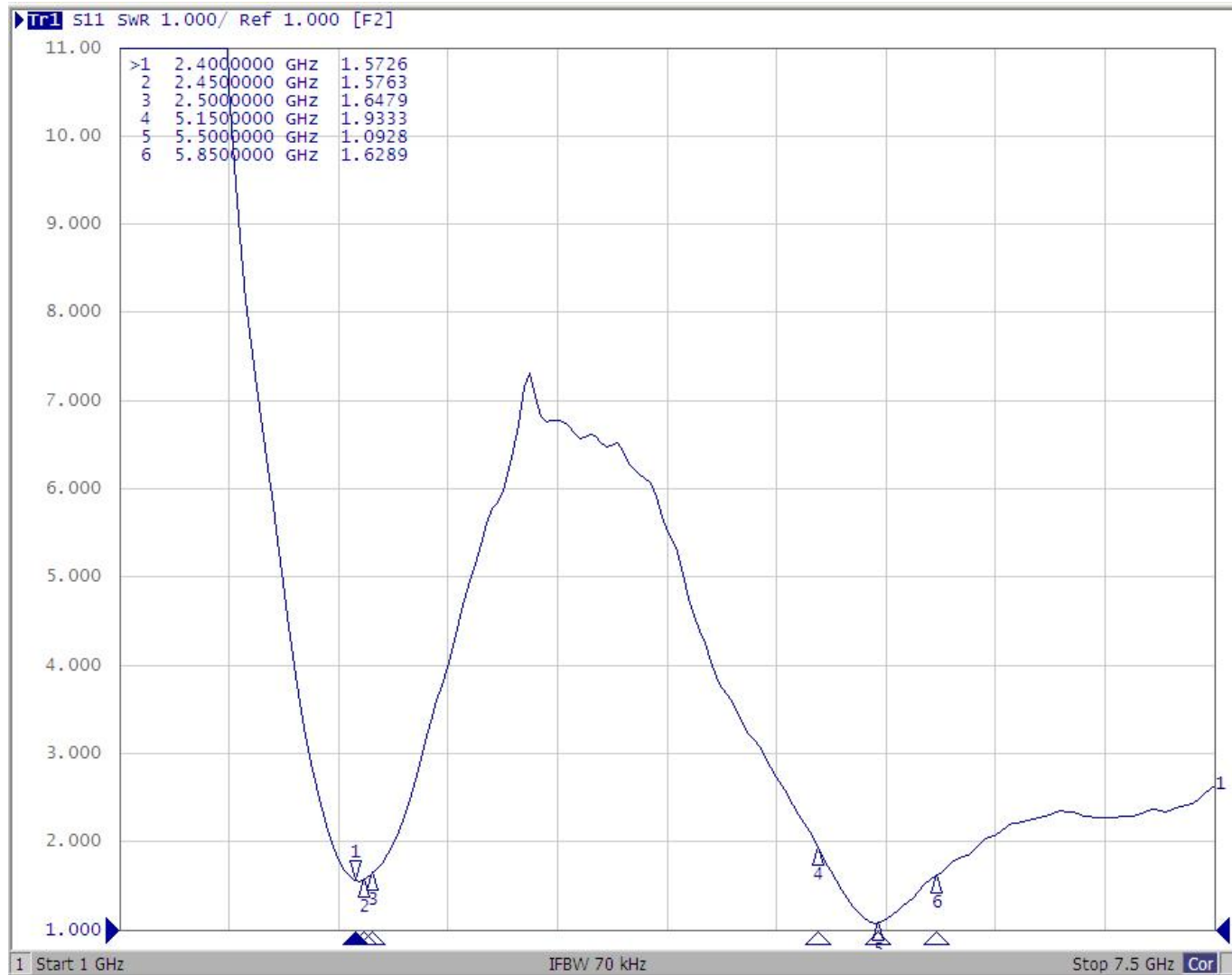
ANT 2



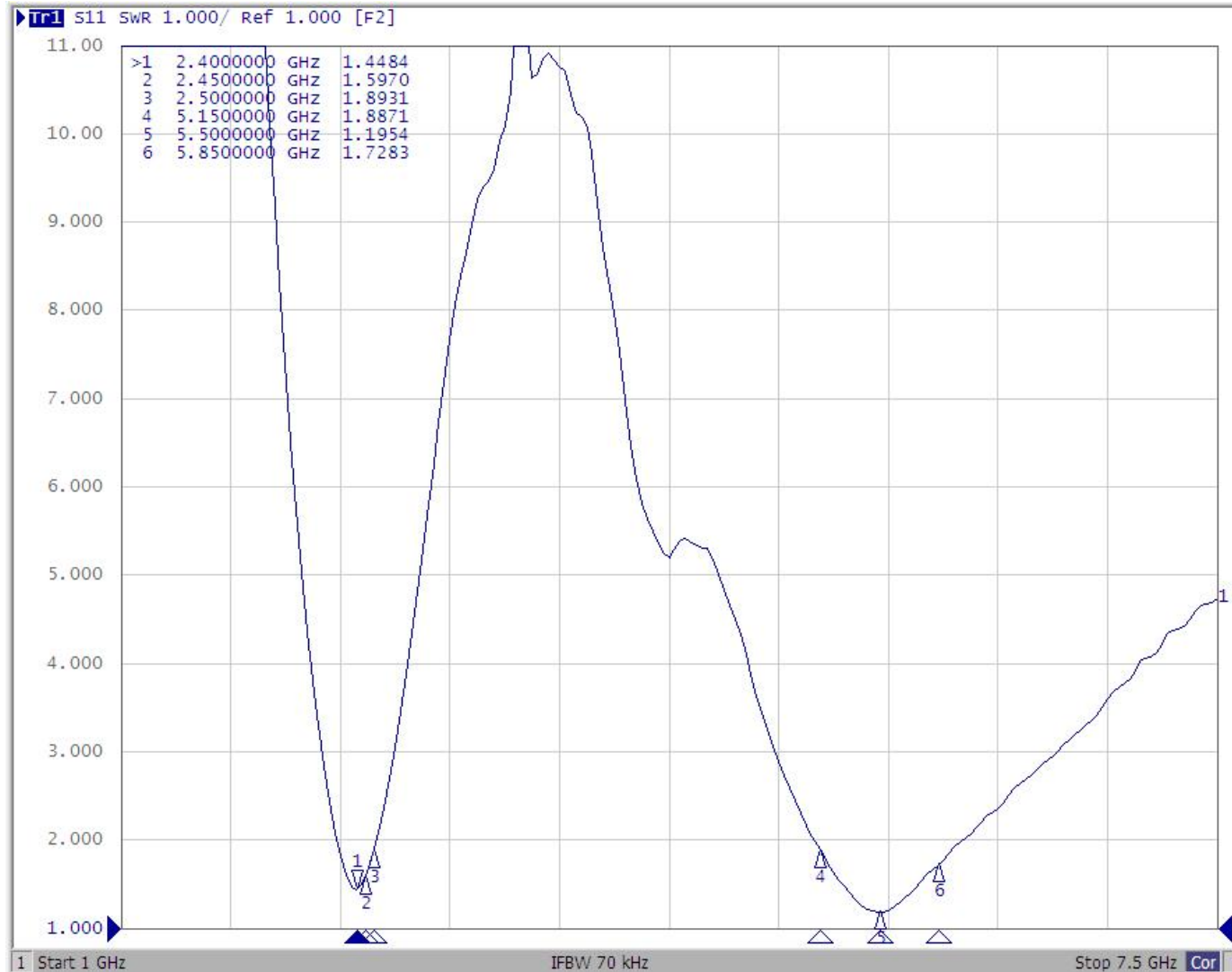
3. Test Data

ANT 1

3.1 S-Parameters



ANT 2



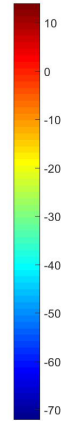
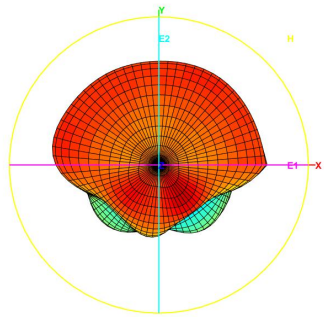
4. Antenna Gain Test

_4.1 Antenna Radiation Pattern

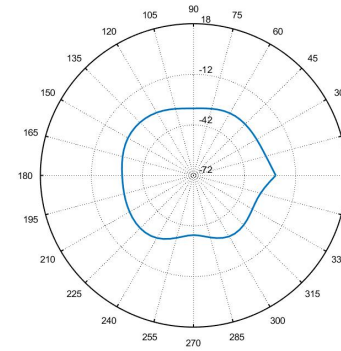
2450MHz

ANT 1

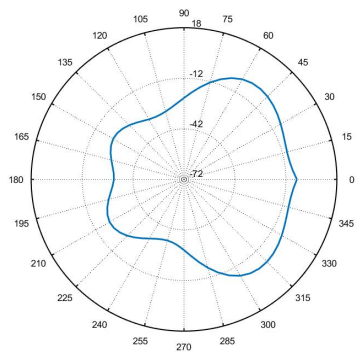
Total_3D_H_2.45GHz



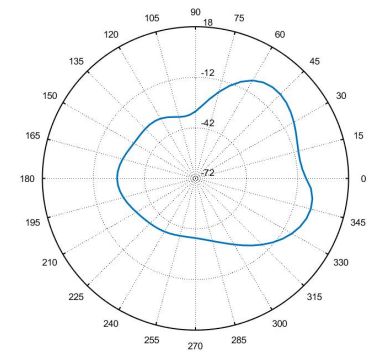
Total_Polar_H_2.45GHz



Total_Polar_E1_2.45GHz



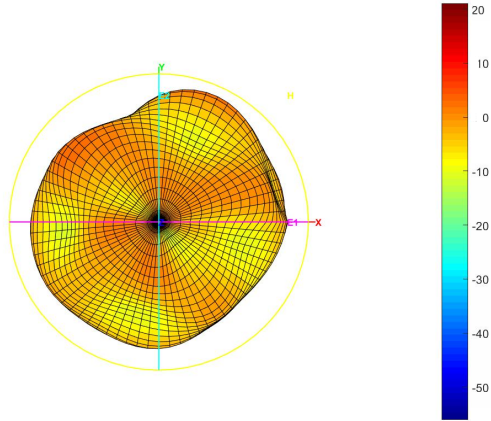
Total_Polar_E2_2.45GHz



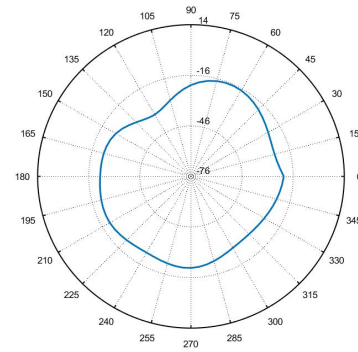
ANT 1

5500MHz

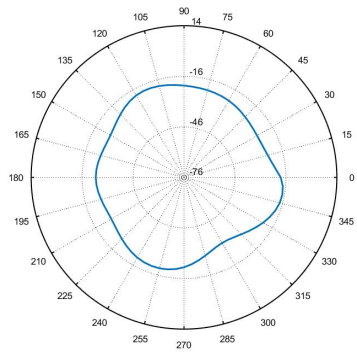
Total_3D_H_5.5GHz



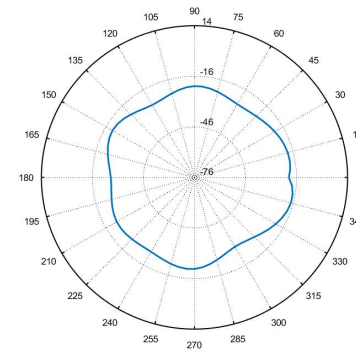
Total_Polar_H_5.5GHz



Total_Polar_E1_5.5GHz



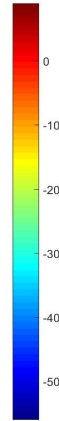
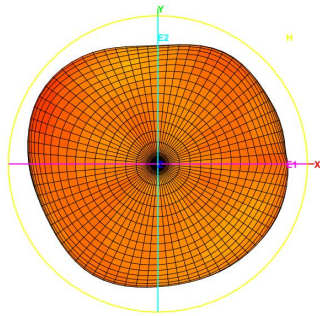
Total_Polar_E2_5.5GHz



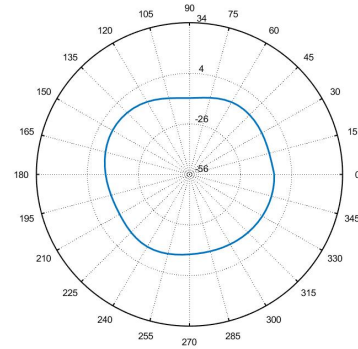
ANT 2

2450MHz

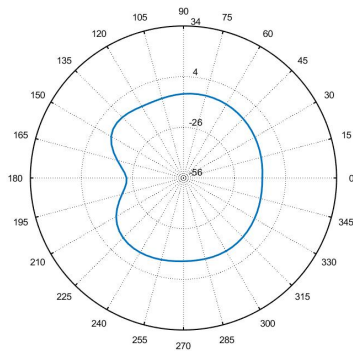
Total_3D_H_2.45GHz



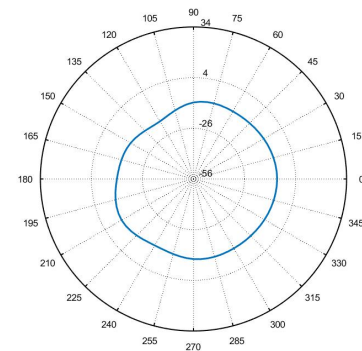
Total_Polar_H_2.45GHz



Total_Polar_E1_2.45GHz



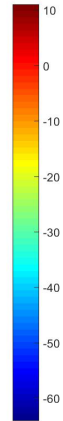
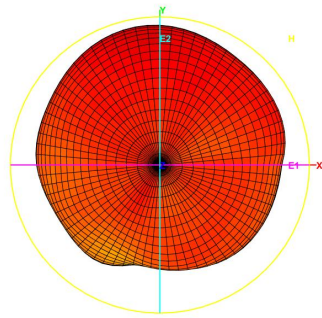
Total_Polar_E2_2.45GHz



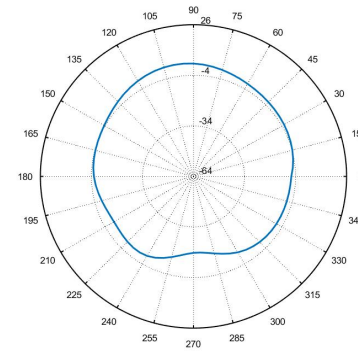
ANT 2

5500MHz

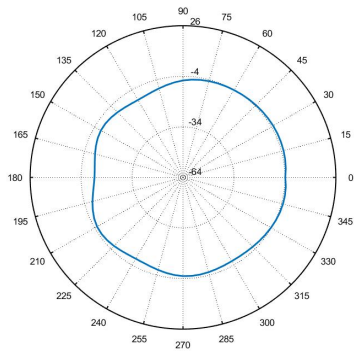
Total_3D_H_5.5GHz



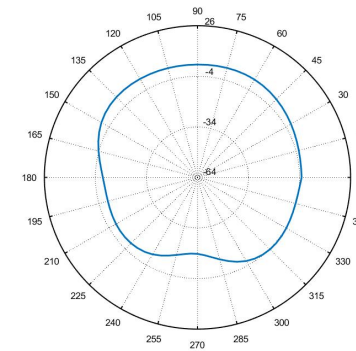
Total_Polar_H_5.5GHz



Total_Polar_E1_5.5GHz



Total_Polar_E2_5.5GHz



4. Antenna Gain Test

_4.2 Gain and Efficiency Test Data

	ANT-1		ANT-2	
Freq (MHz)	Effi (%)	Gain (dBi)	Effi (%)	Gain (dBi)
2400	27.75	-2.03	27.54	-3.75
2450	27.44	-3.19	34.70	-3.75
2500	24.21	-5.69	34.04	-2.03
5150	30.4	2.74	38.35	3.25
5350	30.35	2.52	36.98	3.61
5500	30.46	3.92	32.99	3.51
5650	30.53	2.85	33.50	3.47
5750	30.57	3.91	38.55	3.92
5850	30.76	3.24	39.43	3.92