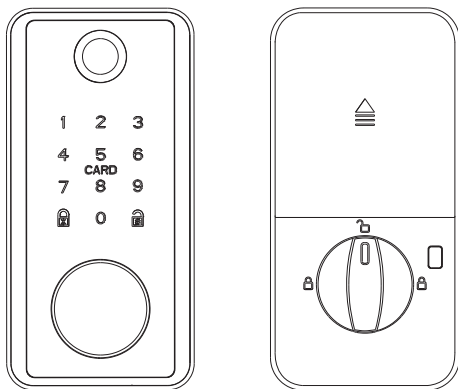


# INSTRUCTION MANUAL

**GM Version**



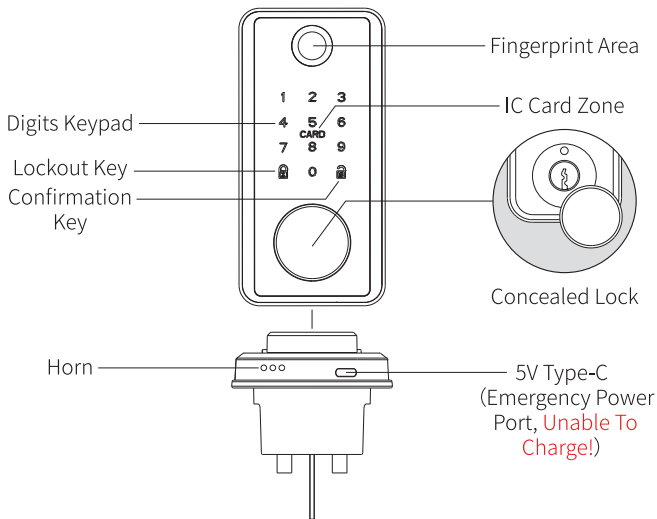
Before installing the smart lock,  
please read this manual carefully,  
and keep it in a safe place, for future reference.

# TABLE OF CONTENTS

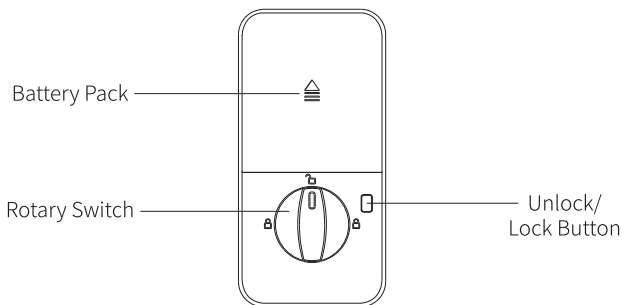
<b>PRODUCT OVERVIEW.....</b>	<b>01</b>
<b>DOOR LOCK SCHEMATIC.....</b>	<b>02</b>
Attachment.....	02
<b>DOOR LOCK INSTALLATION TUTORIAL.....</b>	<b>03</b>
1、Measure The Door Size.....	03
2、Mounting Latch Strike Plate And Strike Plate Box.....	03
3、Adjustment Latch.....	04
4、Installation Of Latch.....	05
5、Installation Of Door Locks.....	06
<b>USE OF DOOR LOCKS.....</b>	<b>09</b>
1、Outdoor Unlocking And Locking.....	09
2、Interior Unlocking And Locking.....	10
3、How To Delete A User.....	11
4、Emergency Supply.....	12
<b>APP OPERATION INSTRUCTIONS.....</b>	<b>13</b>
1、App Registration And Login.....	13
2、Add Bluetooth Door Lock.....	14
3、Bluetooth Door Lock Home.....	15
4、Temporary Password Management-Create And Delete.....	16
5、Fingerprint Management.....	18
6、Password Management.....	20
7、Card Management.....	21
8、Dual Verification.....	22
9、Member Management-Administrator Add.....	23
10、Member Management-Ordinary Members Added.....	24
11、Deletion Of family Members.....	24
12、Open Door Record And Equipment Alarm.....	25
13、Restore Factory Settings.....	26
<b>LOCAL AUXILIARY FUNCTIONS.....</b>	<b>27</b>
<b>PRODUCT TECHNICAL PARAMETERS.....</b>	<b>29</b>

# PRODUCT OVERVIEW

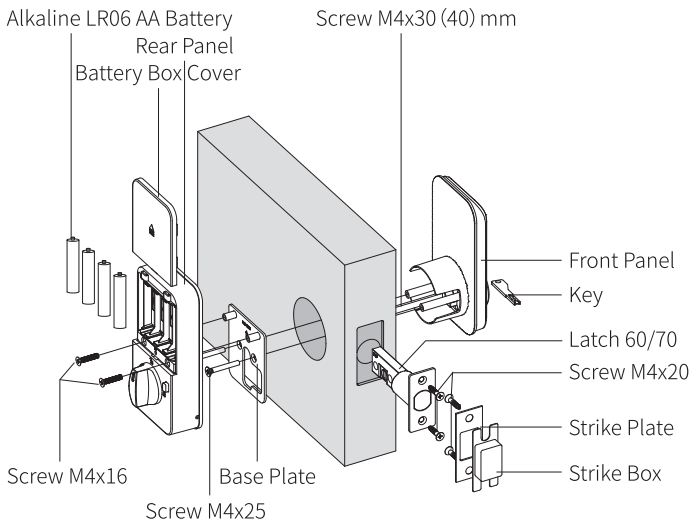
## Front Panel



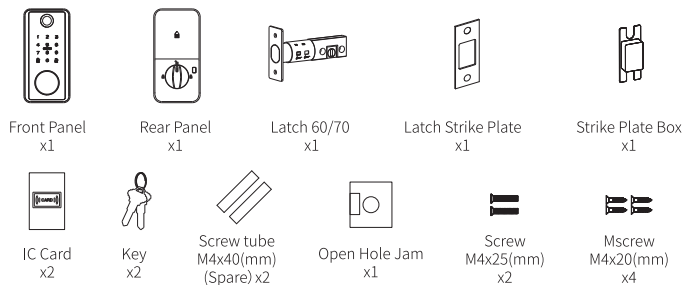
## Rear Panel



# DOOR LOCK SCHEMATIC



## Attachment

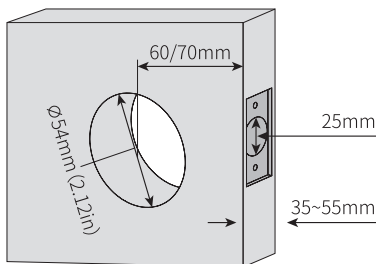


**⚠ Open the product package and check that the above accessories are included.**

# DOOR LOCK INSTALLATION TUTORIAL

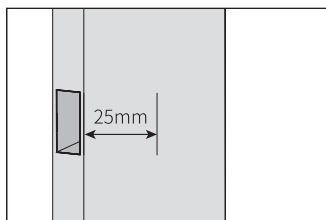
## 1. Measure The Door Size

Make sure door thickness is 30mm-50mm, door hole diameter is  $\Phi 54\text{mm}$ , measure backset size is 60/70mm with the deadbolt.

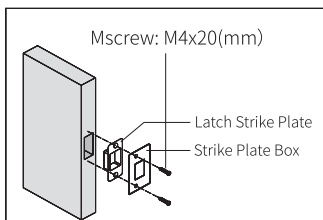


**⚠** (1) Applicable door thickness 35~55mm, if the door thickness exceeds this range, please contact us for more information. Please choose the right fittings according to your door thickness. (2) For 35-45 door thick, please use a 30mm nut, 45-55 door thick, please use 40mm nut.

## 2. Mounting Latch Strike Plate And Strike Plate Box

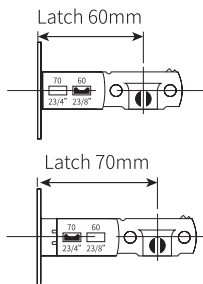


(1) The locking hole should be at least 25mm deep, allowing the locking mechanism to extend into the space.

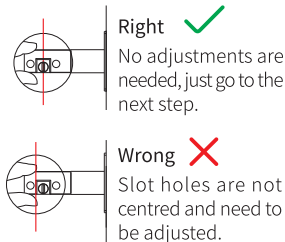


(2) Use 2 self-tapping screws to secure the snap box and snap plate to the door frame.

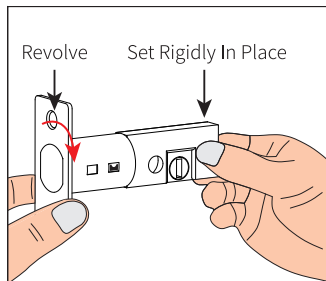
### 3. Adjustment Latch



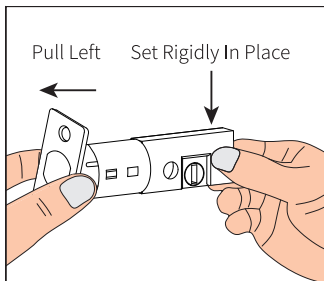
(1) According to the lock hole to choose or adjust the appropriate lock sharp size inch (**factory default is 60mm**).



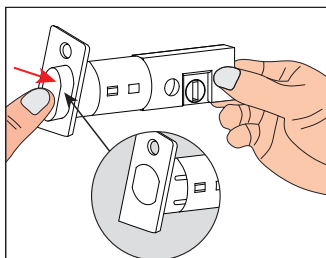
(2) Observe whether the locking slot hole is centred or not, adjust the position again if it is not centred.



(3) To adjust the 70 mm locking device, secure the end of the device and then rotate the front of the device.

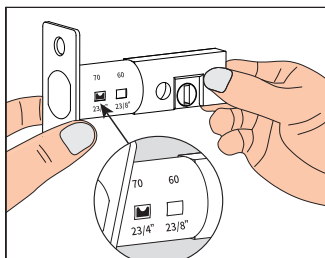


(4) At this point stretch the front end of the locking lee to the left to the end.



Correct State ✓

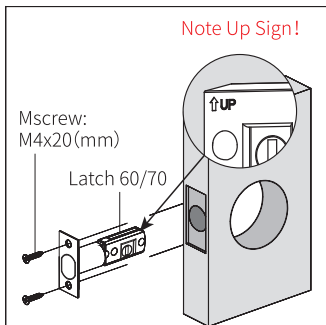
(5) When the lock is found to be dented during operation, press the lock fully in first.



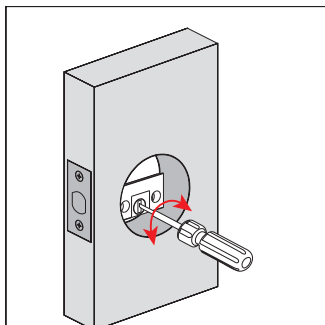
Adjustments completed!

(6) After the front of the locking lever is reset, the snap point is shown at the 70mm position.

## 4. Installation Of Latch

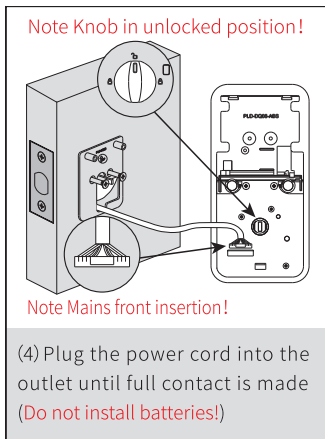
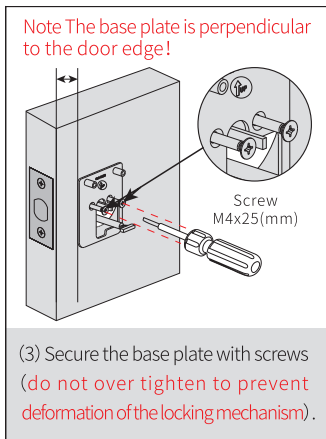
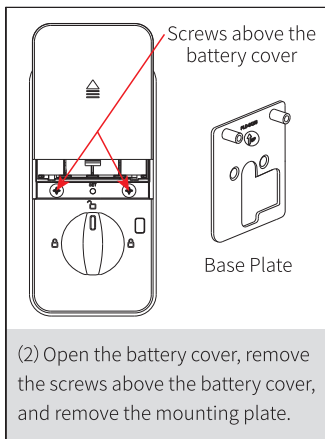
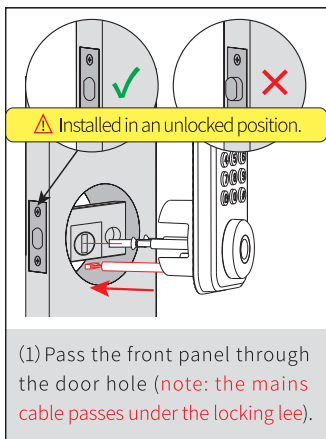


(1) Secure the locking lee to the door frame with two M4x20 screws.

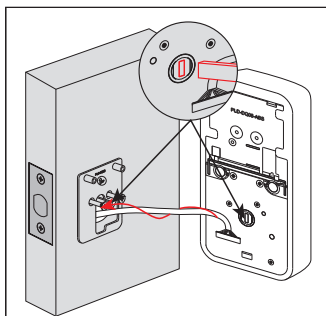


(2) Use a one screwdriver to check that the locking lee is smooth.

## 5. Installation Of Door Locks

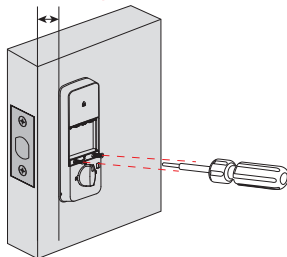




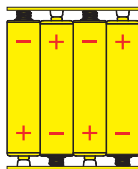
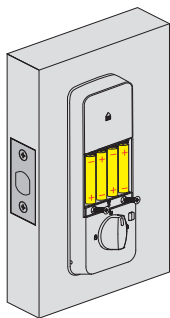


(5) Tuck the mains back into the door frame, align the rear panel with the Latch and fix to the door.

Note Rear panel is perpendicular to the door edge!



(6) Secure the two screws previously removed from the battery cover and tighten them.



⚠ Note the battery orientation!

(7) Installation is complete when the battery is installed and the battery cover is closed.

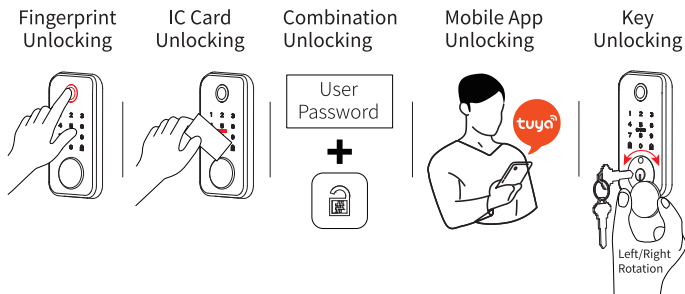
### **Caveat**

- (1) Please be sure to install the batteries after the door lock is installed.
- (2) The door lock will automatically calibrate the motor to identify the direction of opening the door.
- (3) The rotating parts of the 60/70 locking lee must be able to rotate smoothly and flexibly.
- (4) Please choose high-quality LR06 alkaline batteries and make sure that the 4 batteries are brand new, and cover the battery cover.
- (5) This lock requires a mechanical key for manual unlocking, remove the mechanical key from the package and keep it in a safe place so that it can be used at any time.
- (6) When you hear the low voltage alarm, please replace the batteries immediately, do not mix new and old batteries or different types of batteries.
- (7) This lock is waterproof IP53, please pay attention to daily use and maintenance.
- (8) Keep your fingers clean and dry when using this lock.
- (9) When using the Bluetooth app on your mobile phone, please keep it within an effective distance of 5~10 metres.

# USE OF DOOR LOCKS

## 1、Outdoor Unlocking And Locking

### (1)、Unlocking From Outside

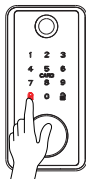


### (2)、Locked From Outside

#### Auto Lock Off Mode

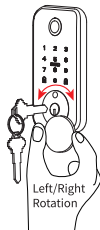
In Auto Lock mode,  
5 seconds after unlocking,  
The latch is  
automatically extended.

#### Manual Mode



Press the panel  
numeric buttons  
to wake up the device,  
then press [🔒].

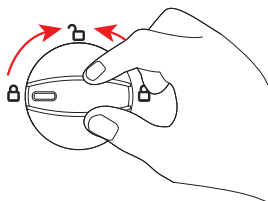
#### Key Mode



## 2、Interior Unlocking And Locking

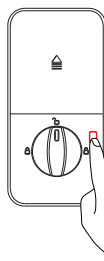
### (1)、Unlocking From The Inside

#### Panel Unlocking



Turn knob to unlock position

#### Electronic Switch Buttons



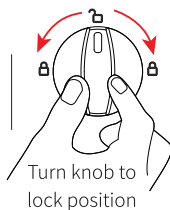
Press this button to open and close the lock.

### (2)、Locked From Inside

#### Auto Lock Off Mode

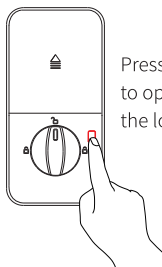
In Auto Lockout Mode, the unit will lock out automatically.

#### Manual Mode



Turn knob to lock position

#### Electronic Switch Buttons

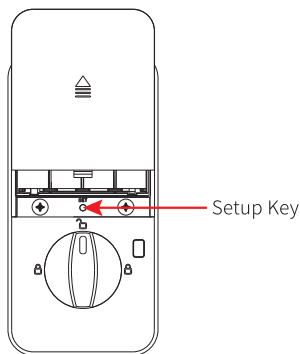
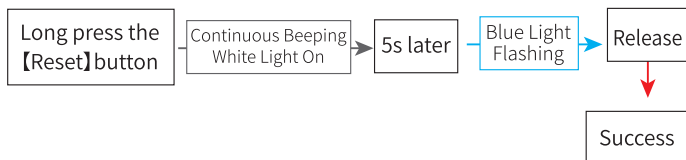


Press this button to open and close the lock.


### 3、How To Delete A User (Restore Factory Settings)

When the lock is reset to factory settings, all user keys are cleared and all locally programmed functions are reset to the original factory settings and the app is automatically unbound.

#### Method 1:

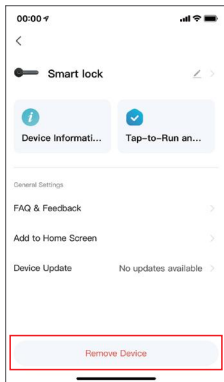


#### Method 2:

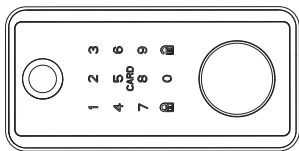
Wake up the keypad and enter【888+ 】to verify the administrator, the voice announces “Initialisation successful”.

### Method 3:

Via App: ( See P.28)



### 4. Emergency Power Supply



In case of insufficient power, use the emergency power supply here (charging is not possible).

- (1) Put at least one key outside the door, just in case.
- (2) When the battery is low, the red light blinks 5 times and can still be used about 100 times (Apps will not be able to operate the device after a power failure).
- (3) When the battery is dead, you can use the key to unlock the door, and also you can supply power to the lock through the 5V Type-C USB.
- (4) Use alkaline batteries, to prevent the battery from leaking and causing damages, if you don't use it, please remove the battery.

# APP OPERATION INSTRUCTIONS

## Tuya App Operating Instructions

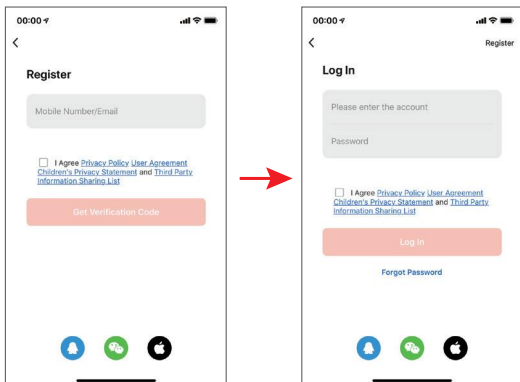
“Tuya Smart App” is a smart device management app provided by Tuya to end consumers. Through “Tuya Smart App”, you can conveniently configure and control your purchased whole-house smart products, configure your favourite scenarios and automation solutions, share your smart devices with your family and friends, and enjoy the fun of whole-house intelligence.

App acquisition: Search for “Tuya Smart” in the mobile phone application market or “Apple Store” or scan the QR code below to download.

※ This document takes the Smart Life App as an example to explain the App door lock panel function in detail.

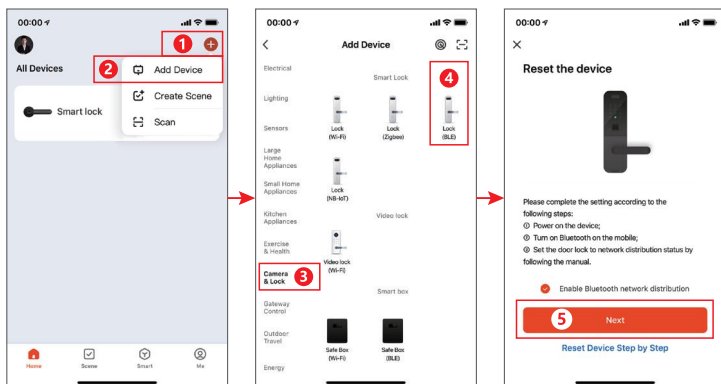


## 1. App Registration And Login



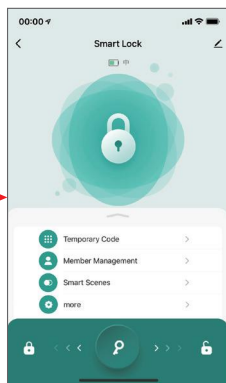
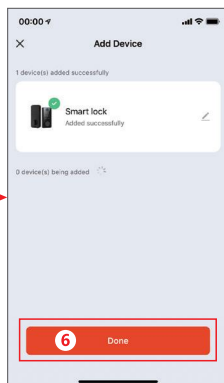
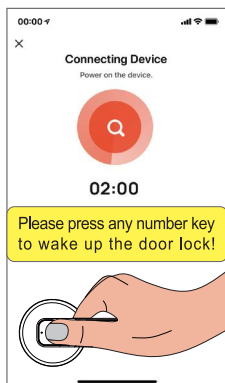
- (1) App registration: Accounts without an app choose to register or login via SMS verification code.
- (2) Click **【Create New Account】**, you will enter the registration page of the account, get the SMS verification code and set the password according to the prompts.
- (3) If you have an existing account, you can click **【Login with existing account】** to log in to the App, and the login method supports password, verification code, social account and other login.

## 2. Add Bluetooth Door Lock (Must First Turn On The Mobile Phone Bluetooth Function)



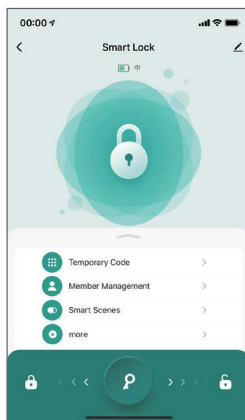
- (1) Click the **【Add Device】** icon on the home page of the app.
- (2) Touch the password head to wake up, wait for the mobile phone to scan the device to select **【Add】**, press the **【+】** mark to add the device to complete.
- (3) Wait for the device to be added, and the smart lock interface appears, indicating that it has been added successfully.





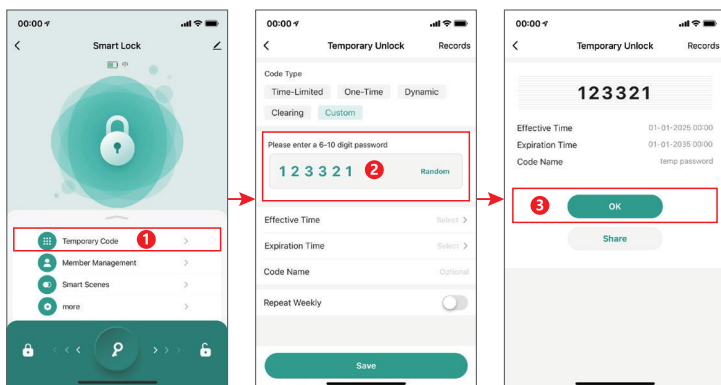
⚠ If you cannot match the door lock, restore the factory settings (See P.11).

### 3, Bluetooth Door Lock Home

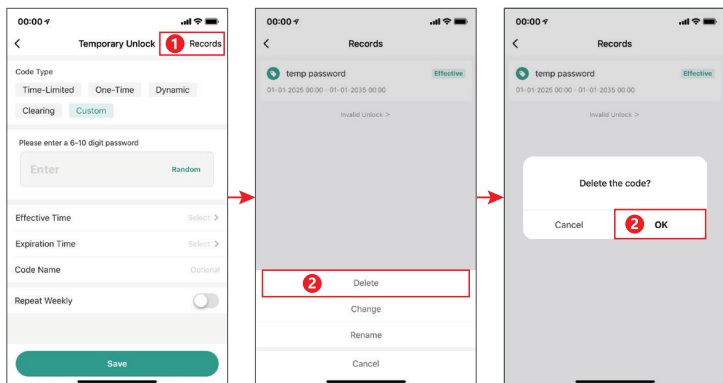


- (1) The top of the homepage shows the device name and current battery status, and the bottom of the homepage contains【Open Record】, 【Temporary Password】, 【Member Management】, 【Smart Apps】and 【More Settings】.
- (2) The homepage centre will show the connection status of Bluetooth, if it is connected, you can slide【Unlock】to the right to open the door lock directly, and slide【Close】to the left to close the lock (please make sure that the Bluetooth of your mobile phone has been turned on, and it is recommended to do this operation within 5 meters). If Bluetooth is not connected, it will show“Unable to connect Bluetooth”(Bluetooth cannot be turned on directly through the App).

#### 4. Temporary Password Management-Create and Delete

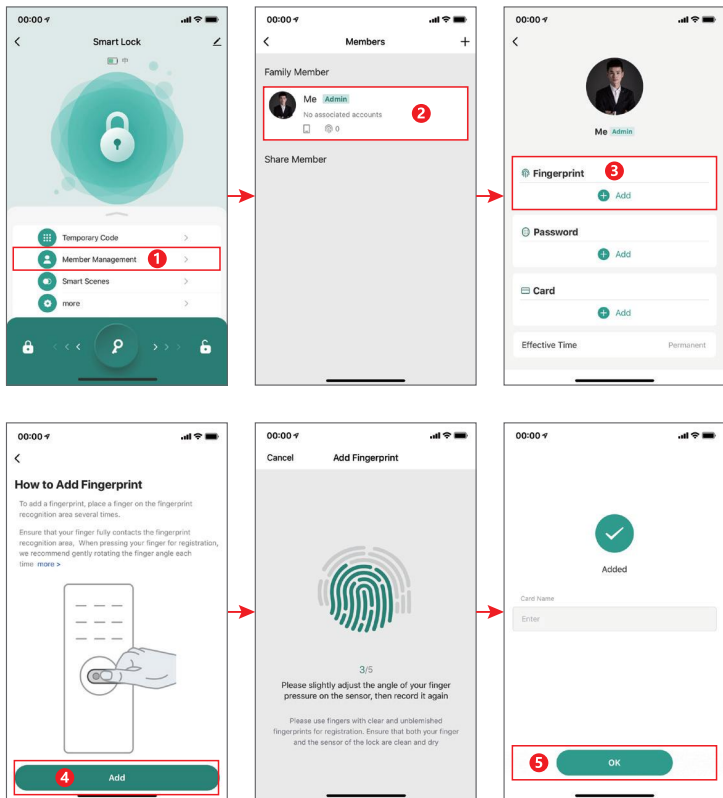


- (1) Click the【Temporary Password】icon on the home page of the app.
- (2) Enter the interface of【Temporary Unlock】, select the password type and enter 6~10 digits of password (you can't enter the same number or consecutive numbers, such as: 000000 or 123456).
- (3) Select the effective time and expiry time and enter the password name.



- (1) Click the【Temporary Password】icon on the home page of the app.
- (2) Enter the【Temporary Lock】creation interface, select【Records】in the upper right corner to enter the history of【Temporary Password】records.
- (3) Select the【Delete】option at the bottom, then click【OK】to delete the【Temporary Password】.

## 5. Fingerprint Management



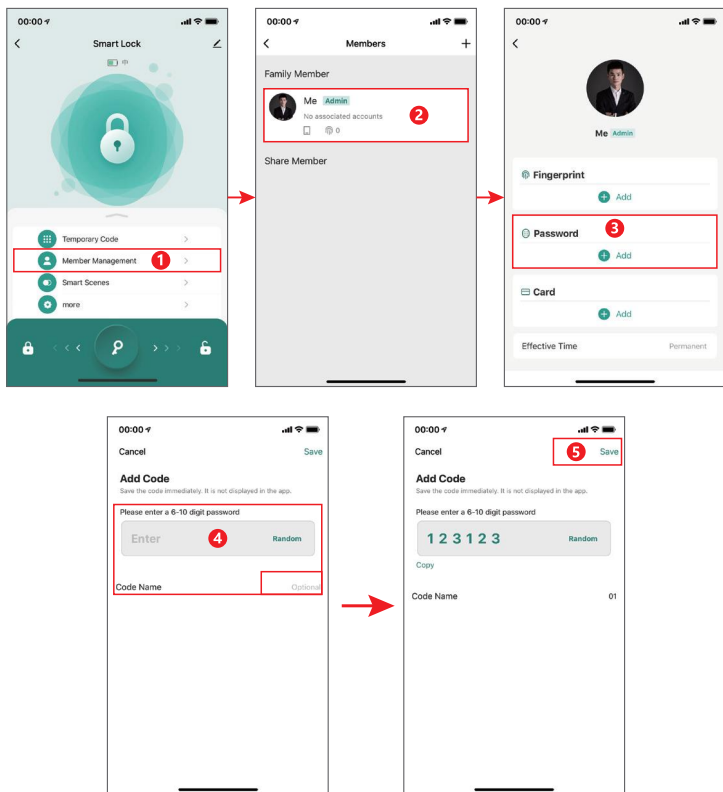


⚠ As shown in the picture, when entering fingerprints to ensure that the 5 fingerprint areas are completely entered, the recognition flexibility will be increased by more than 99.9%!

- (1) The belly of the finger is used to make the entry, not the fingertip.
- (2) The same fingerprint needs to be scanned from multiple angles.
- (3) Multiple fingerprints can be scanned for the same user.
- (4) Please keep your finger clean, not too dry or too wet.

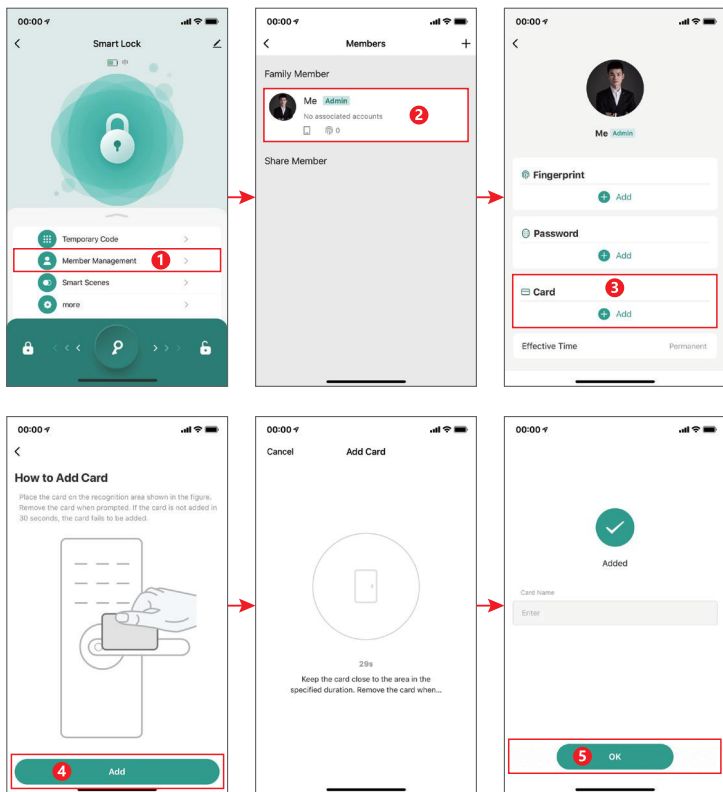
- (1) Select the **【Family Member】** account with corresponding authority in the **【Member Management】** portal on the homepage (Note: the associated administrator will have administrator authority, while the associated ordinary member will only have ordinary user authority).
- (2) Click **【Start Collecting】**, the blue light will be on to enter the fingerprint collecting interface, press the fingerprint green light to release, each fingerprint needs to be collected 5 times, the indicator light will be off, the fingerprint collection is successful.
- (3) Connect to the door lock via Bluetooth, administrator can collect fingerprints for himself/herself or other family members.
- (4) Unlock the door with fingerprint, green light for successful verification and red light for failed verification.

## 6. Password Management



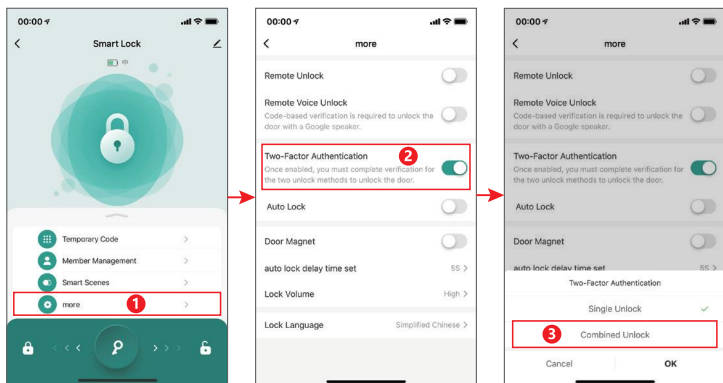
- (1) Home page【Member Management】portal, select the【Family Member】account with corresponding privileges (Note: Associated administrators will have administrator privileges, while associated ordinary members only have ordinary user privileges).

## 7、Card Management



- (1) Home page “Member Management” portal, select the “Family Member” account with corresponding privileges (Note: Associated administrators will have administrator privileges, while associated ordinary members only have ordinary user privileges).

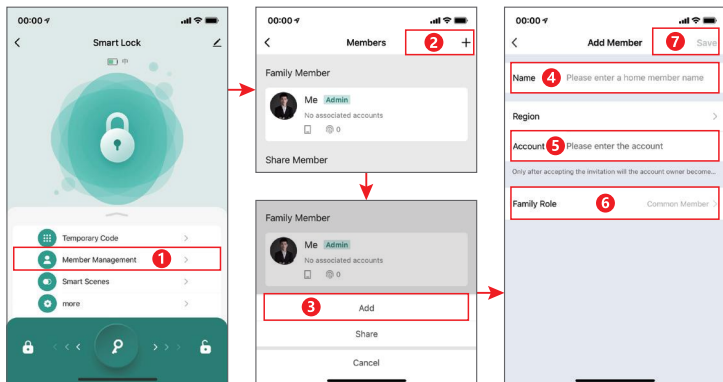
## 8、Dual Verification



- (1) Slide the **More Settings** menu at the bottom of the main interface, click **Dual Authentication**, and select **Single Unlocking** or **Combined Unlocking** (the factory default is **Single Unlocking** mode).
- (2) After selecting **Dual Authentication**, you need to enter two different sets of normal user keys to unlock the door (no order of priority required).



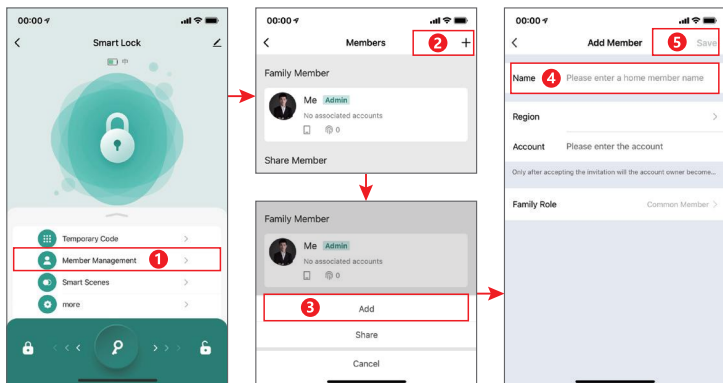
## 9、Member Management-Administrator Add



- (1) Click【+】in the upper right corner of the【Member Management】portal, select 【Add Member】, enter the member name and Graffiti account, select the permissions and click save to add administrator. user. (Note: the added administrator account must be a registered Graffiti Smart account, otherwise it will not be able to add)
- (2) The added account will receive an invitation message after opening the mobile Graffiti App, and will have the management rights of the device after agreeing.
- (3) All the key information added by this account entrance will be administrator privilege by default.

⚠ Users who add accounts will all default to administrator privileges.

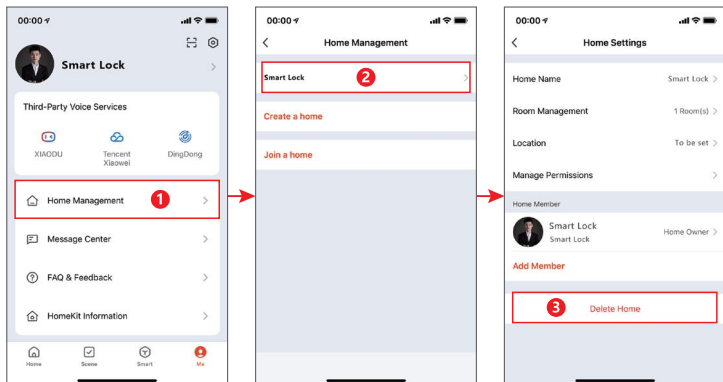
## 10. Member Management-Ordinary Members Added



(1) Click **[+]** in the upper-right corner, select **[Add Member]**, enter the member name, no need to enter the account number, and click save to add a general member user.

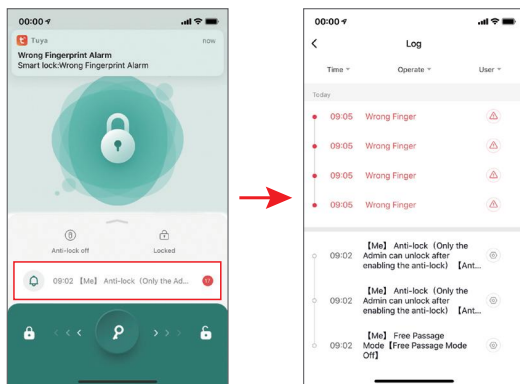
**⚠ Users who add accounts will all default to administrator privileges.**

## 11. Deletion Of Family Members



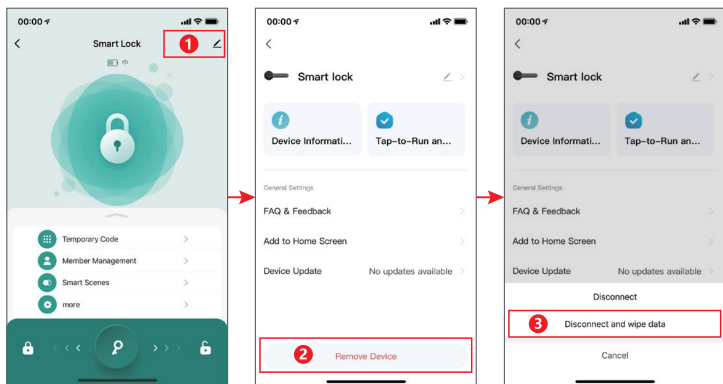
Click my【Family Management】in the lower right corner of the App, select Family to delete or change the usage rights of the added family members.

## 12、Open Door Record And Equipment Alarm



Click on the【🔔】icon to view the door opening record and trial and error alarms and other information. (Note: When the door lock is connected to the Bluetooth of mobile phone, the open door record and alarm will be shown on the App in real time, otherwise the record will be cached locally in the door lock, waiting for the next time the door lock is connected to the Bluetooth of the mobile phone and opens the door to make up the transmission.

## 13、Restore Factory Settings



On the main page, click on the icon in the upper right corner, enter the interface and find **Remove Device**, select **Unbind and Clear Data**.

- (1) When the mobile phone App is in Bluetooth connection status with the door lock, use the restore factory settings operation, all the door lock's local door opening methods will be cleared, and the door lock will be restored to the factory default status, and other users can also re-match the door lock through the App.
- (2) When the mobile phone does not have Bluetooth connection with the door lock, restore the factory settings on the mobile phone App, the door lock will still retain the door opening data unaffected. Other users can re-pair with the door lock through the App, after re-pairing, all the original data on the door lock will be invalid.

# LOCAL AUXILIARY FUNCTIONS

---

## (1)、Local entry of administrator information

wake up the door lock, press **【1#】** to verify the administrator successfully, and then enter the unlocking information. (Note: All information entered locally in the door lock is “administrator privilege”, and will be automatically associated with Graffiti App “Home Owner”.

## (2)、Rryptographic

The initial password of the lock is **【123456】**, the first time you use it, please pair your lock in Graffiti App, The first user can use fingerprint/password/IC Card.

## (3)、Automatic Locking

The lock is automatically switched off 5 seconds after unlocking, by default this function is switched off (You can customise between 5~60 seconds).

## (4)、Functions Of The Key

The key unlock function is always available when the battery runs out or the code is forgotten.

## (5)、Input Error Limit

After 5 failed attempts to enter the code, the device will lock for 1 minute.

## (6) Volume Adjustment

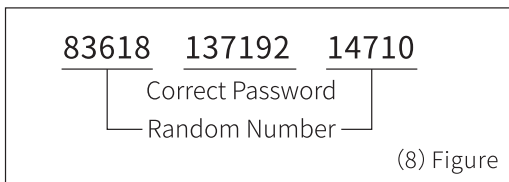
Wake up the door lock, press **【21#】** to verify that the administrator is successful, you can adjust the volume: 0 mute, 1 low volume, 2 medium volume, 3 high volume.

## (7)、Silent Mode

Pressing a button will emit a beep, and the voice can be muted.

## (8)、Unlocking With A Snoop-Proof Code

Users can enter a random number before or after the unlock code to prevent the unlock code from being exposed, the total length of the code is 26 digits (as shown in the figure below) .



This product supports voice control Alexa and Google Assistant in some countries, but you must add the “Graffiti Gateway” to achieve, please download the voice control app for details.

- (1) The first time you use the door lock, please bind the door lock in the App first.
- (2) When the APP adds the door lock, please make sure to press any number key to keep the door lock awake so that the mobile phone can find the door lock.
- (3) When using the mobile app, make sure Bluetooth is turned on in your phone and agree to the app's access to your phone's Bluetooth.

# PRODUCT TECHNICAL PARAMETERS

SN	Function	Content	Description
1	Unlocking Method	Fingerprints, Passwords Tuya App, Key	
2	Number Of Users	300 Groups	Includes administrators and regular users
3	Print	100 Groups	Fingerprints need to be re-entered 5 times (please enter from multiple angles)
4	Cryptographic	100 Groups	Password needs to be entered 2 times【🔑】key to confirm (6~10 digit password, both times must be the same!)
5	IC Card	100 Groups	Supports the addition of 13.56MHz IC cards
6	Low Voltage Alarm	$4.8V \pm 0.2V$	When the voltage is lower than 4.8V, the red light blinks 5 times, prompting "the battery is low, please replace the battery", and there are still 100times left to unlock the door, when it is lower than 4.5V, the door lock will not be able to unlock.
7	Static Current	$\leq 80\mu A$	
8	Dynamic Current	$\leq 250mA$	
9	Supply Voltage	6V	New battery voltage (select a high quality #6 1.5V alkaline battery).
10	Operating Temperature	$-25^{\circ}C \sim 65^{\circ}C$	
11	Operating Humidity	20%~90%RH	
12	False Alarm	Support	Five consecutive failures will result in a 1-minute pause
13	Quick Lock	Outdoor Lockout	Press【🔑】It can be used as a lock or a return key
14	Wired Door Magnet	(Support for optional products only)	Install the door magnet and plug in the power cord, turn on the door magnet function in APP, it will lock automatically when closing the door.

- (1) 1st user please set up fingerprints in the app.
- (2) Local input information will be granted administrator privileges and automatically associated with【Family Members】in the application.
- (3) Do not manually programme locally unless necessary, mobile apps are much more convenient.



Model No: DS01 GM (Tuya Model)

Version : 1.0

Date : 2024.07.26

Origin : Zhongshan • China

Issued in July 2024

Printing in China © All Rights Reserved





This device complies with part 15 of the FCC Rules. Operation is subject to the following two conditions: (1) This device may not cause harmful interference, and (2) this device must accept any interference received, including interference that may cause undesired operation.

Any Changes or modifications not expressly approved by the party responsible for compliance could void the user's authority to operate the equipment.

**Note:** This equipment has been tested and found to comply with the limits for a Class B digital device, pursuant to part 15 of the FCC Rules. These limits are designed to provide reasonable protection against harmful interference in a residential installation. This equipment generates uses and can radiate radio frequency energy and, if not installed and used in accordance with the instructions, may cause harmful interference to radio communications. However, there is no guarantee that interference will not occur in a particular installation. If this equipment does cause harmful interference to radio or television reception, which can be determined by turning the equipment off and on, the user is encouraged to try to correct the interference by one or more of the following measures:

- Reorient or relocate the receiving antenna.
- Increase the separation between the equipment and receiver.
- Connect the equipment into an outlet on a circuit different from that to which the receiver is connected.
- Consult the dealer or an experienced radio/TV technician for help.

#### FCC Radiation Exposure statement

The device has been evaluatec to meel general RF exposure requirement. The device can be used in portable exposure condition without restriction.