

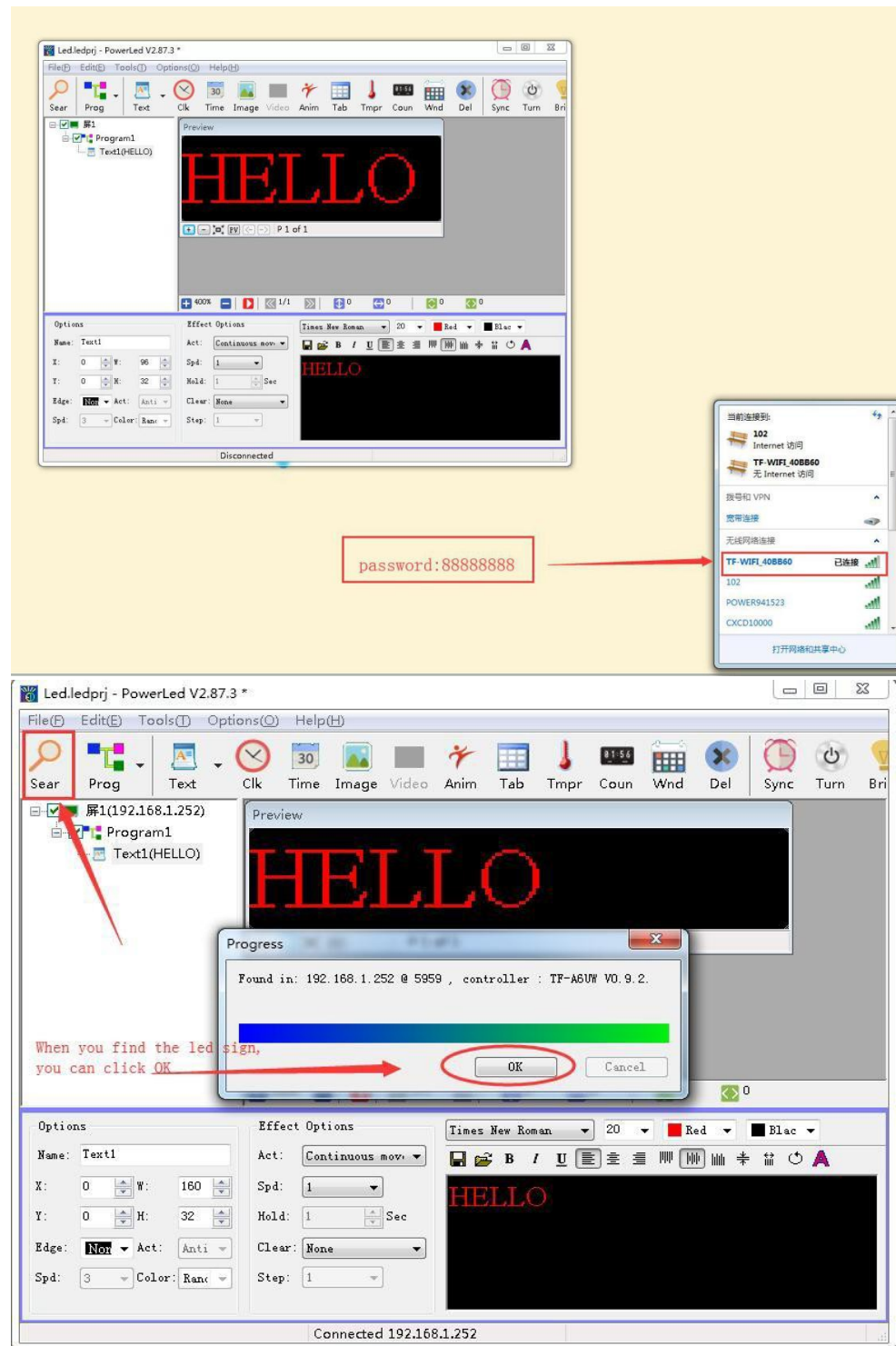
LED SIGN User's Manual

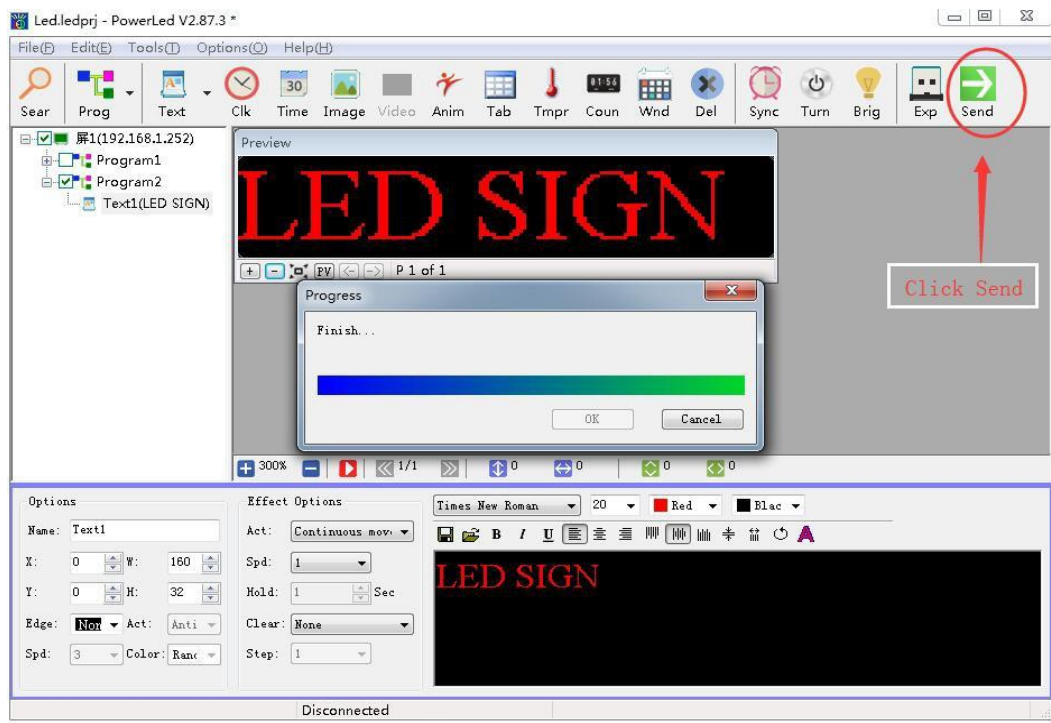
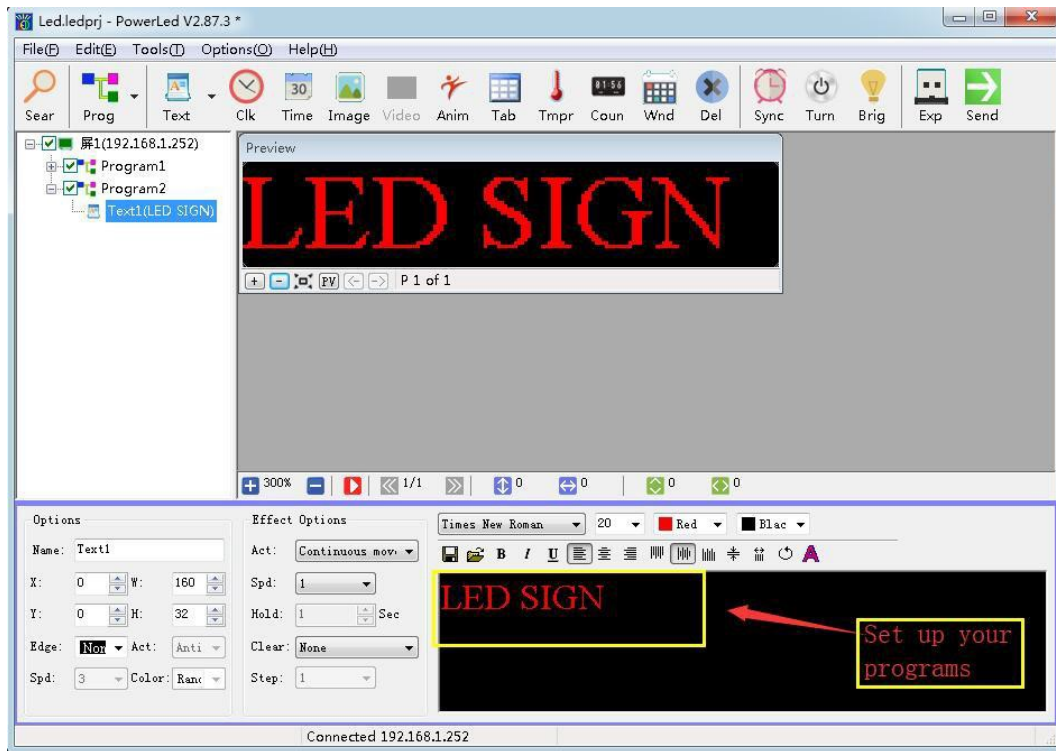
Shenzhen Color Trade Co.,Ltd

I-PC WIFI

At first, you can connect with the led sign WIFI.

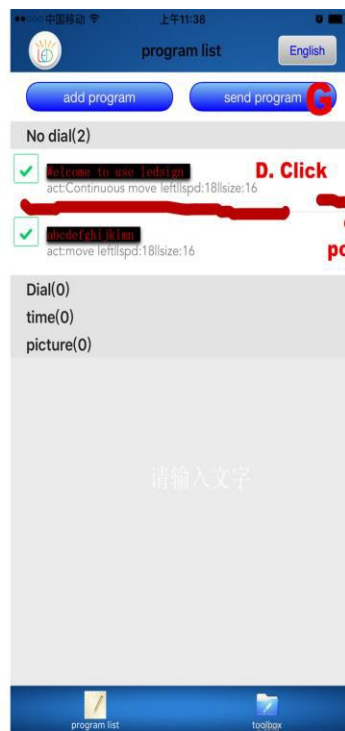
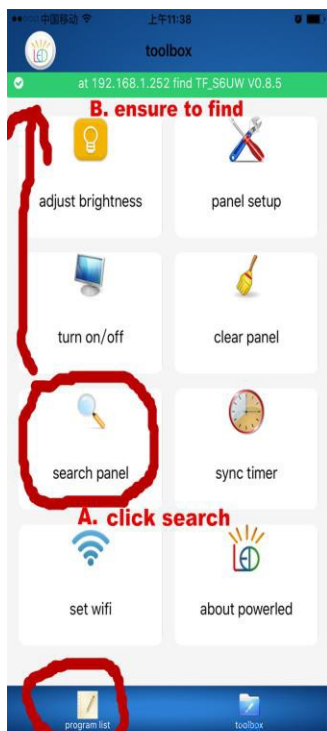
It's needn't the password to link, (if required password: **88888888**)





II- Mobile phone wireless

It's needn't the password link (if required password is: 88888888)



C. Click it

ps:A-B-C-D-E-F-G

III- Operation

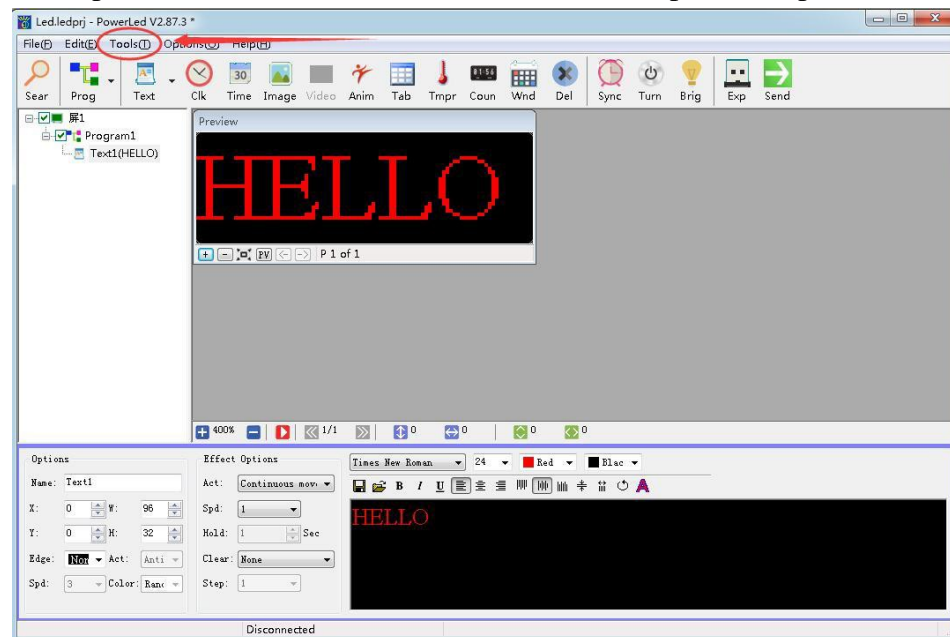
1. Install the software below from your flash drive. During the first step, select “ ”

English as your language from the drop down menu . Please note that this software is only compatible with Windows7, Windows8, Windows10 and XP operation systems.



“ ”

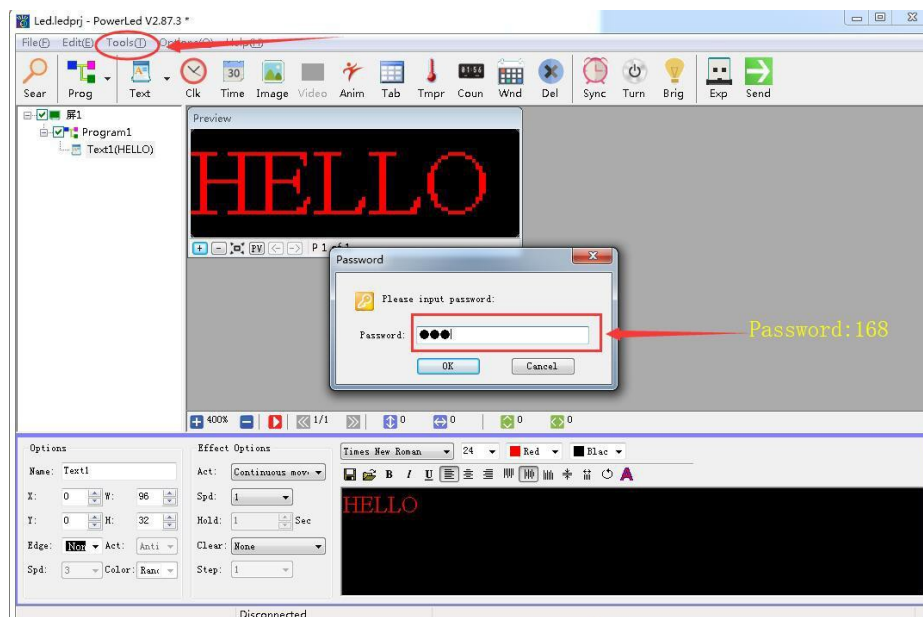
2. Open the software. Click on Tools, then select panelSetup



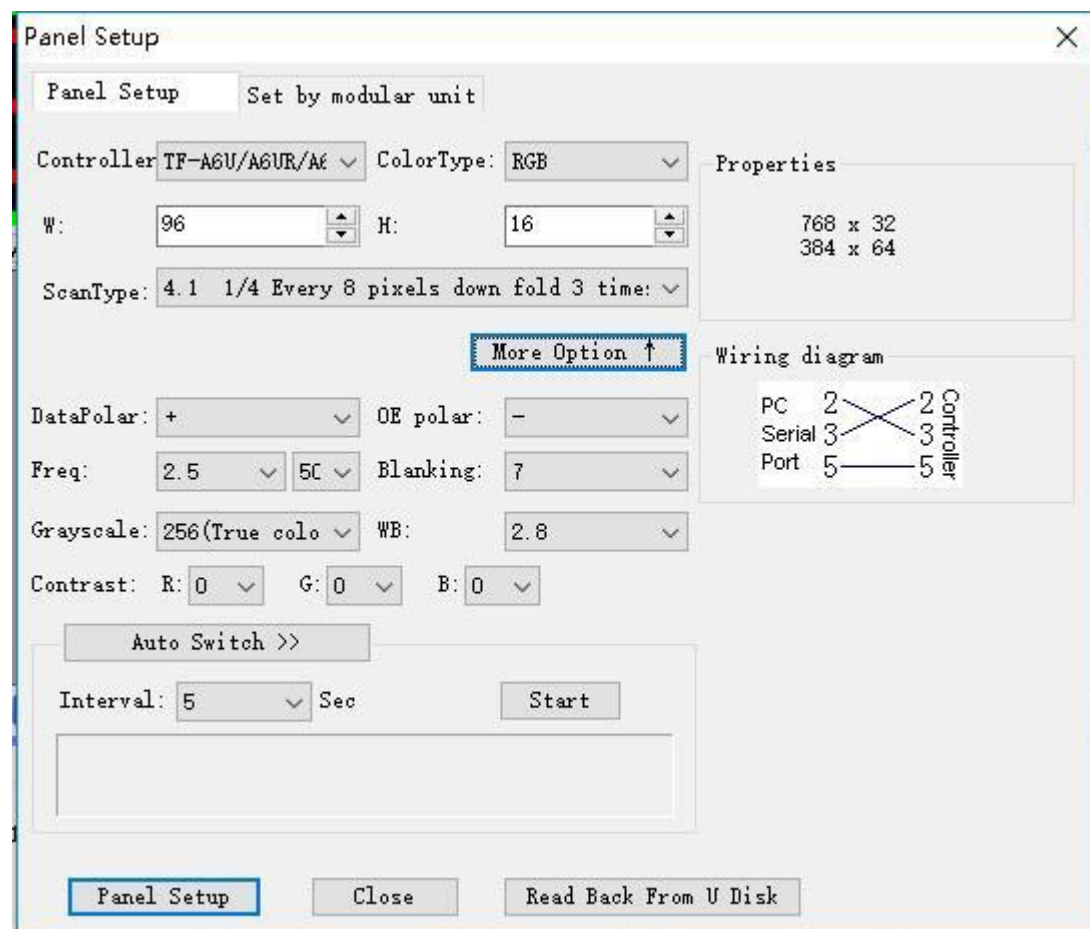
“ ”

“ ”

Type in **168** as your password, then click OK .



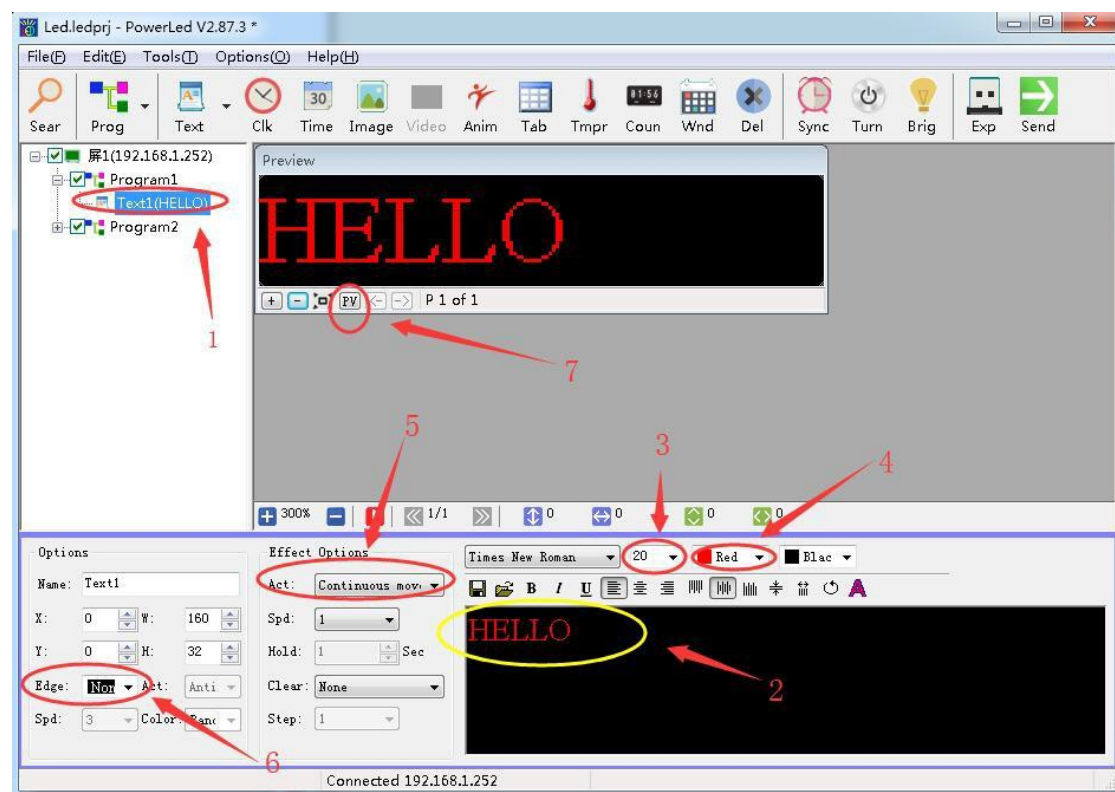
3. In the “Panel Setup” window, make sure your settings are exactly the same as the picture below. Set “**TF-A6UW**” as your “**controller**”, “**RGB**” as your “Color Type”, “**96**” as “W”, “**16**” as “H”, then click “**Setup**”. This is just an initial setup of the program. You will be able to edit your texts and motion later.



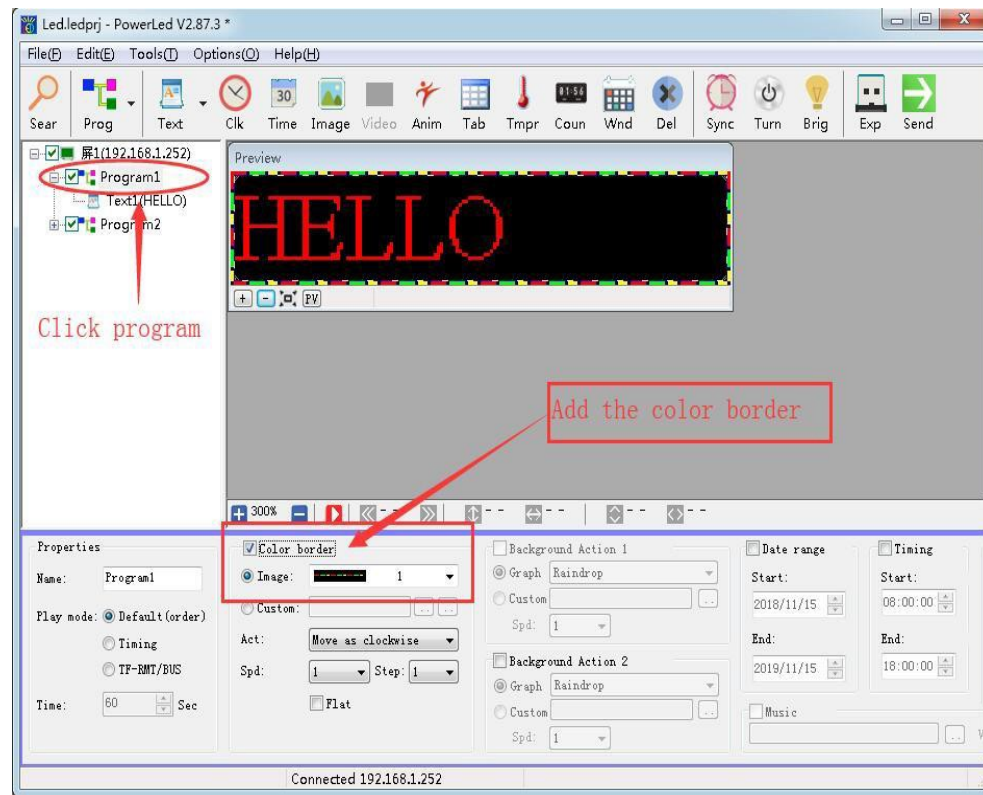
IV- Set up more Features

STEP 1. Text

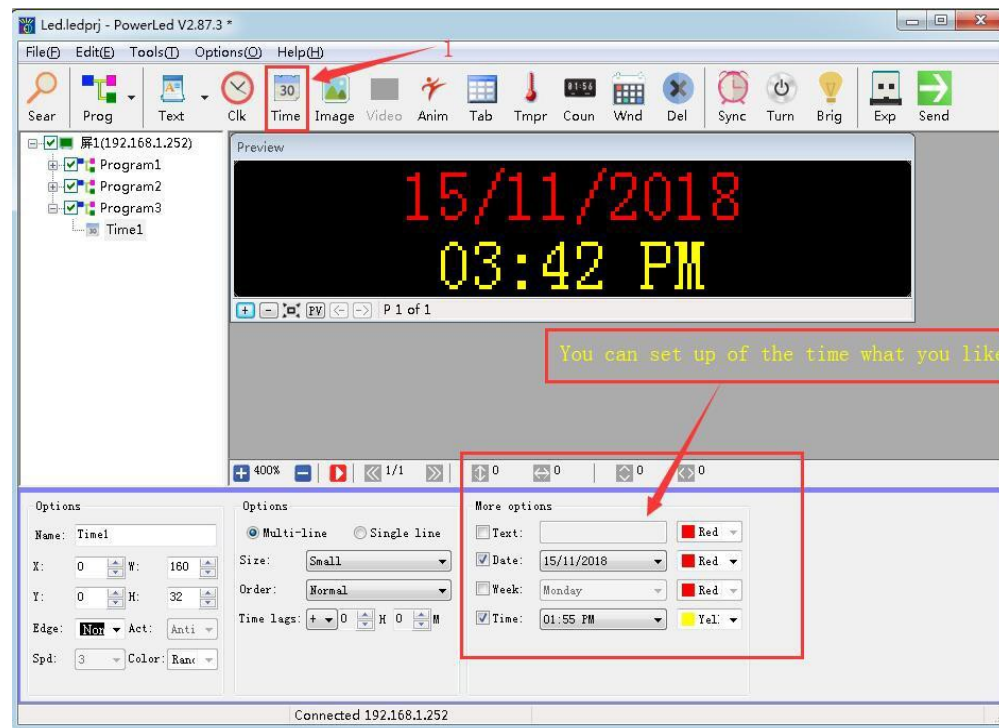
- ◆ Add a text window.
- ◆ Write down your texts
- ◆ Select the advertising text, set the font size.
- ◆ Select the advertising text, set the color of each letter.
- ◆ The effect of text appears way and function.
- ◆ Choose whether need to notable border effect.
- ◆ Click the “PV” can preview the effect of your editing.



STEP 2. Add Color Border



STEP 3. Add the time



STEP4. Partition

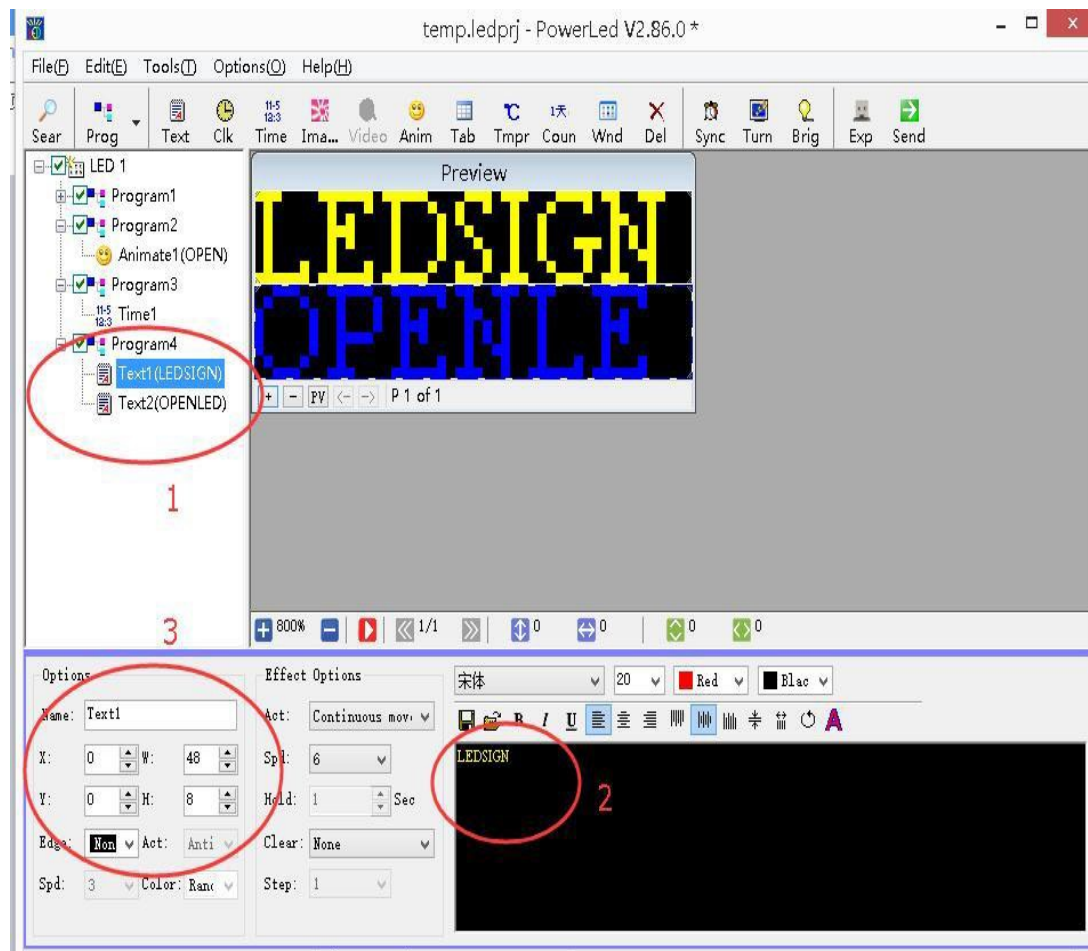
1. Add two text windows.
2. Enter the advertising text area, pay attention to distinguish between the content of each text.
3. The distribution of 1 and 2 specification.

Eg:

Text 1 (X:0 Y:0 W:72 H:12)

Text 2 (X:0 Y:12 W:72 H:12)

◆ :Pay attention to do not overlap.



STEP 5.Texts and time

A: Time

1Add Time, and you also can choose the size of the time,

Can add Date,Time, Week and Texts.

1. Add the Edge type what you want.

B: Text

2. Add text, then edit the text what you want,like “OPEN”

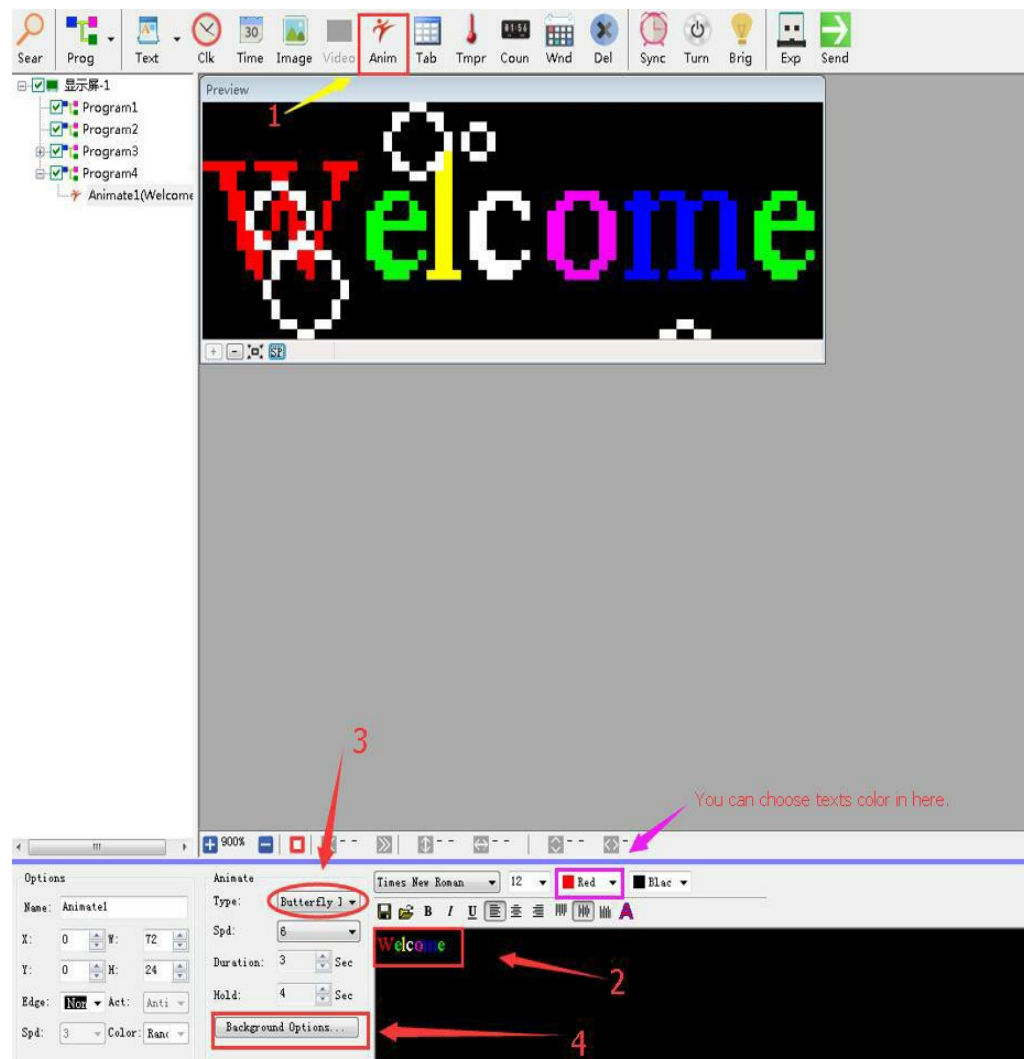
You also can choose the texts color.

Pls note the partition coordinates.



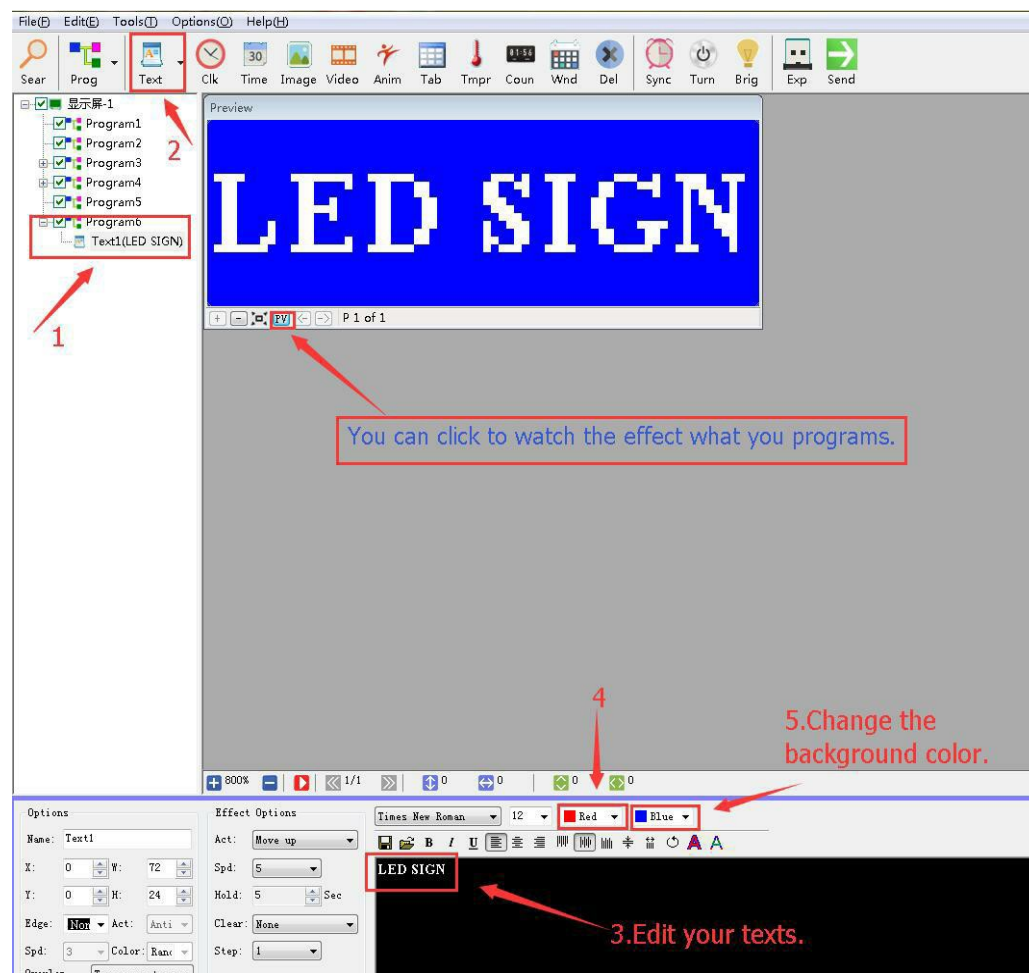
STEP 6. Texts and time

- 1: Add new program and add Anim;
- 2: Edit your texts on the Texts box;
- 3: You can choose effect Type on “3”
- 4: Add **Background Options**, you can choose effect what you want.

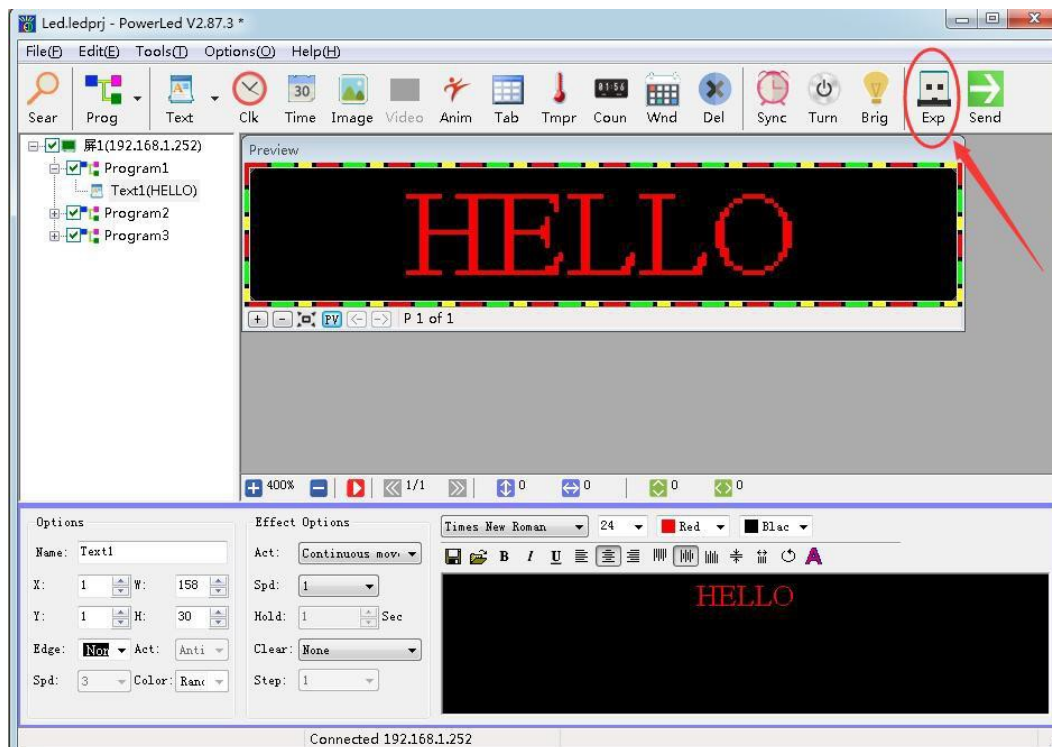


STEP 7: Change background color and Texts

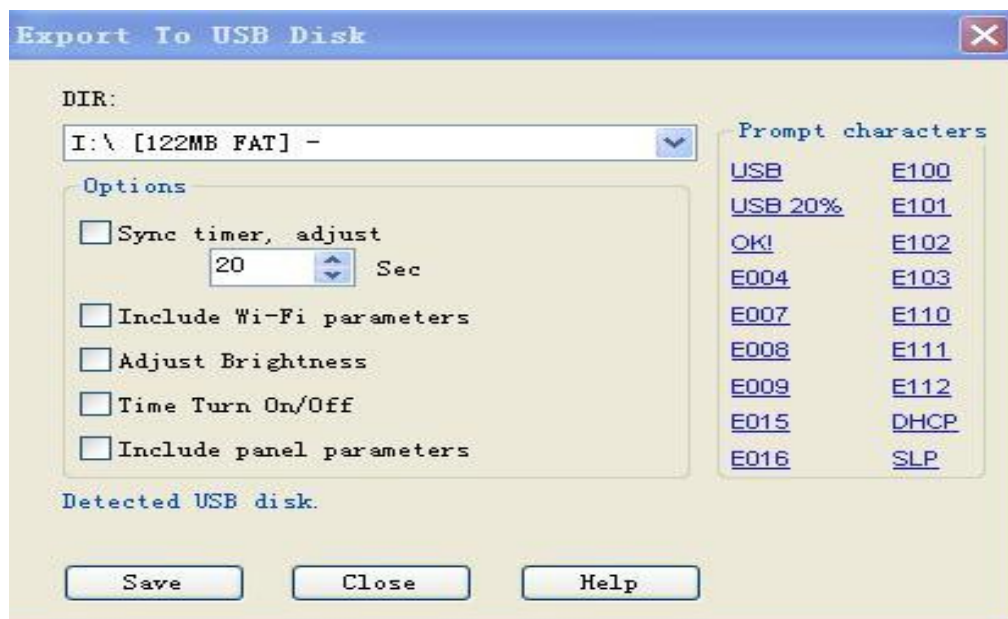
- 1: Add new program and add texts;
- 2: Click add the **Text**;
- 3: Edit your texts on the texts box;
- 4: Change the texts color;
- 5: Change the background color;
- 6: Click “**PV**” to see the effect that you programs.



STEP 8: After editing is complete, click **“Exp”** to save the file to flash drive.



STEP 9: In the Export To USB Disk
Simply click on the save not tick , please Click **“Save”**



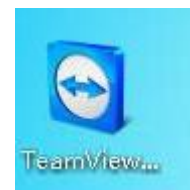
STEP10: Done

Now safely remove the USB from your computer, At first, turn on your LED sign , then plug the USB into the led sign. When you see “OK” on the screen, it means the text has been automatically saved to the sign. You can unplug the USB and use it on next time.

V- After-sales service and maintenance

Our products warranty is 2 years . During the period, if product have any problems, we will send free the new replacement to you replace. If there have any technical problems, we can arrange a technical staff do the remote and show to you how to do it.

For example: Do the remote control or contact with you on the phone to slove the problems.



If you need to our remote assistance, please download on your computer and tell us your Teamviewer ID and password, we will connect with you, thank you.

VI- FCC WARNING

This device complies with part 15 of the FCC Rules. Operation is subject to the following two conditions: (1) this device may not cause harmful interference, and (2) this device must accept any interference received, including interference that may cause undesired operation.

Any changes or modifications not expressly approved by the party responsible for compliance could void the user's authority to operate the equipment.

NOTE: This equipment has been tested and found to comply with the limits for a Class B digital device, pursuant to Part 15 of the FCC Rules. These limits are designed to provide reasonable protection against harmful interference in a residential installation. This equipment generates, uses and can radiate radio frequency energy and, if not installed and used in accordance with the instructions, may cause harmful interference to radio communications. However, there is no guarantee that interference will not occur in a particular installation.

If this equipment does cause harmful interference to radio or television reception,

which can be determined by turning the equipment off and on, the user is encouraged to try to correct the interference by one or more of the following measures:

-- Reorient or relocate the receiving antenna.

-- Increase the separation between the equipment and receiver.

-- Connect the equipment into an outlet on a circuit different

from that to which the receiver is connected.

-- Consult the dealer or an experienced radio/TV technician for help.

To maintain compliance with FCC's RF Exposure guidelines, This equipment should be installed and operated with minimum 20cm distance between the radiator and your body: Use only the supplied antenna.