

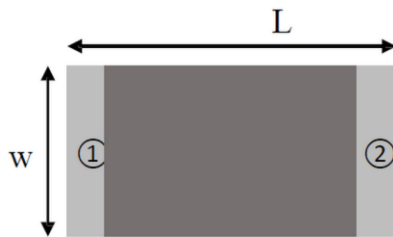
## ● Features

1. Surface Mounted Devices with a small dimension of 1.6 x 0.8 x 0.8mm meet future miniaturization trend.
2. Embedded and LTCC (low temperature co-fired ceramic) technology is able to integrate with system design as well as beautifying the housing of final product.
3. High stability and low tolerance.

## ● Applications

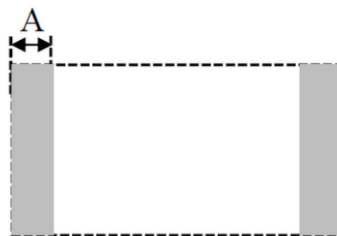
1. Bluetooth and Wireless LAN
2. ISM 2.4GHz in smart phone
3. PDA and other handheld devices.
4. ISM band 2.4GHz applications

## ● Dimensions (Unit: mm)



( Top View )

| Number | Terminal Name |
|--------|---------------|
| ①      | INPUT         |
| ②      | NC            |



( Bottom View )



( Side View )

| Symbols    | L         | W         | T         | A         |
|------------|-----------|-----------|-----------|-----------|
| Dimensions | 1.60±0.20 | 0.80±0.20 | 0.80±0.10 | 0.30±0.10 |

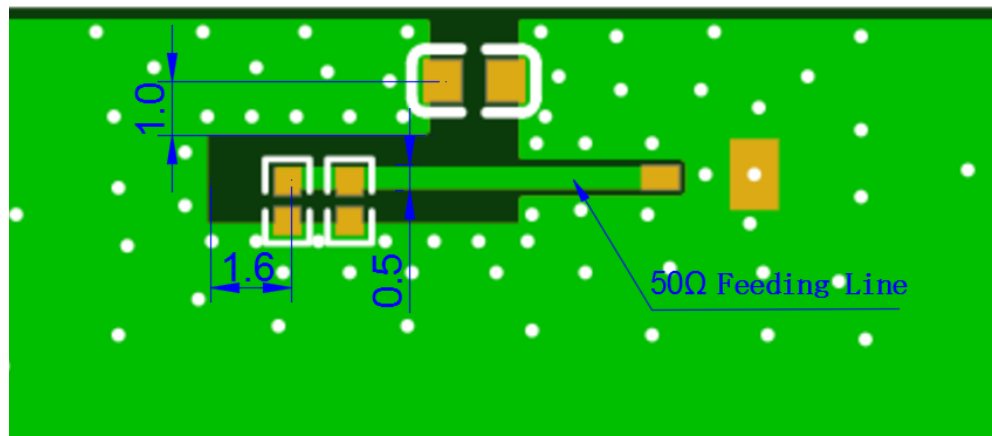
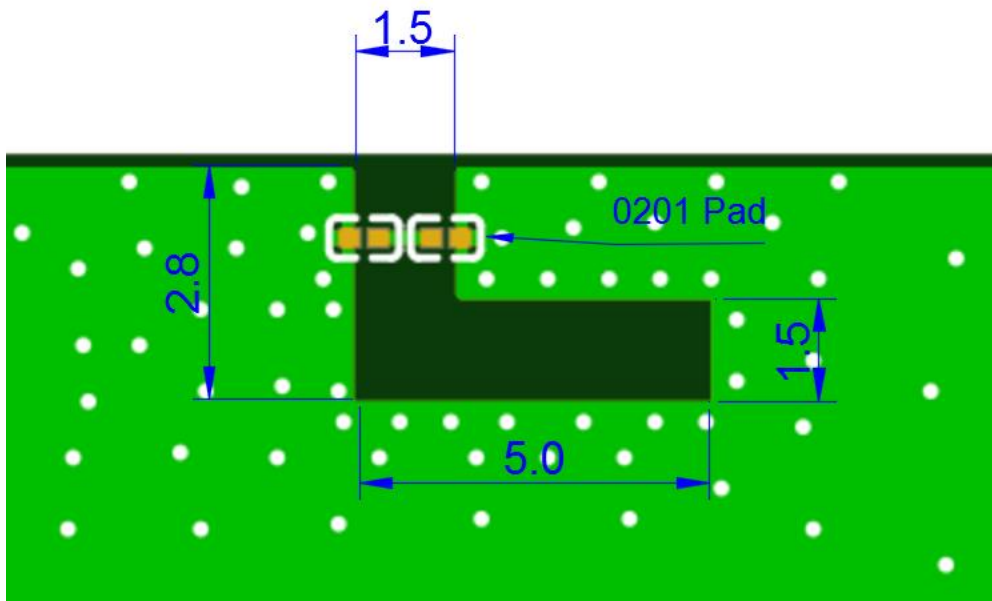
SBR Communication has possession of proprietary information provided in this report and this proprietary information shall be kept in strict confidence and not disclosed to any person or firm without the prior written consent of SBR Communication Technology.

地址：深圳市宝安区西乡街道鹤州社区恒丰工业城B25栋二层

TEL: 0755-82790675, FAX: 0755-82809726

[www.surbaner.com.cn](http://www.surbaner.com.cn)

● Evaluation Board and Matching Circuits



SBR Communication has possession of proprietary information provided in this report and this proprietary information shall be kept in strict confidence and not disclosed to any person or firm without the prior written consent of SBR Communication Technology.

地址：深圳市宝安区西乡街道鹤州社区恒丰工业城B25栋二层

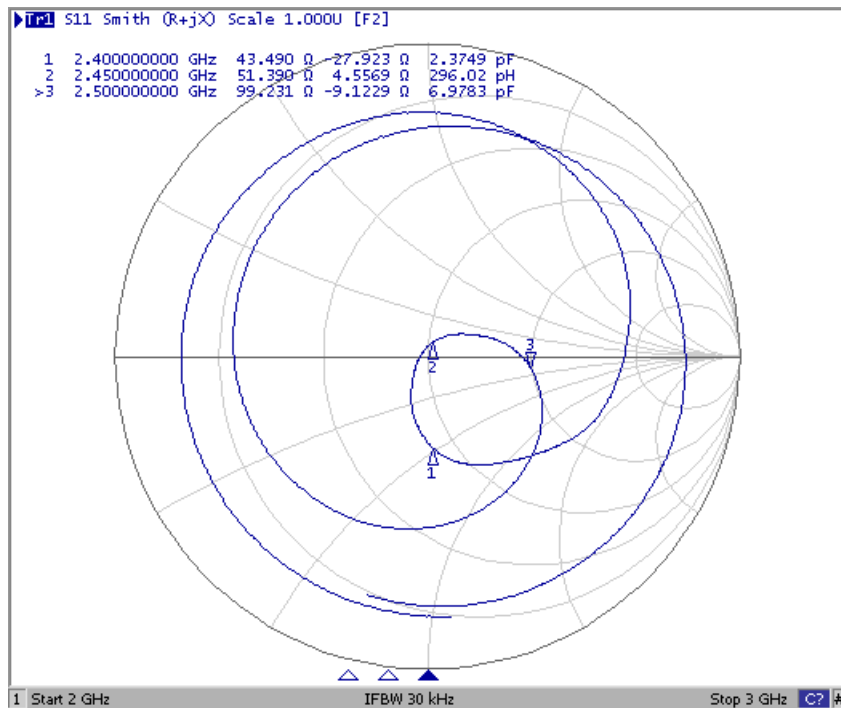
TEL: 0755-82790675, FAX: 0755-82809726 [www.surbaner.com.cn](http://www.surbaner.com.cn)

## ● Electrical Characteristics

| Item | Feature           | Specification   |
|------|-------------------|-----------------|
| 1    | Central frequency | 2445MHz         |
| 2    | Bandwidth         | >100MHz         |
| 3    | Peak gain         | 2.6dBi          |
| 4    | VSWR              | <2              |
| 5    | Polarization      | Linear          |
| 6    | Azimuth beamwidth | Omnidirectional |
| 7    | Impedance         | 50 Ω            |

NOTE: The specification is defined based on the test board dimension.

### (1) Smith Chart

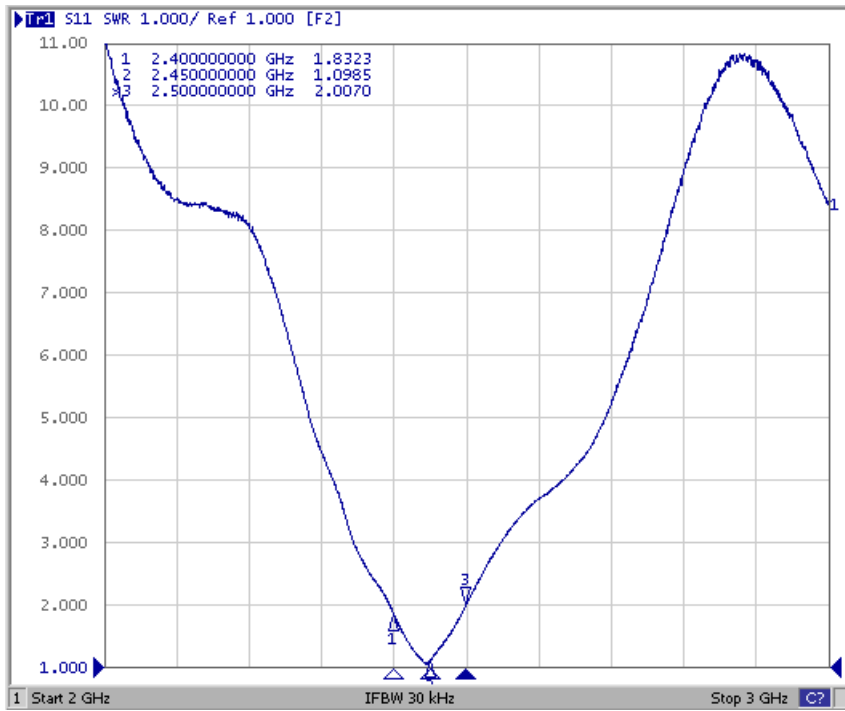


SBR Communication has possession of proprietary information provided in this report and this proprietary information shall be kept in strict confidence and not disclosed to any person or firm without the prior written consent of SBR Communication Technology.

地址：深圳市宝安区西乡街道鹤州社区恒丰工业城B25栋二层

TEL: 0755-82790675, FAX: 0755-82809726 [www.surbaner.com.cn](http://www.surbaner.com.cn)

### (2) S-Parameter



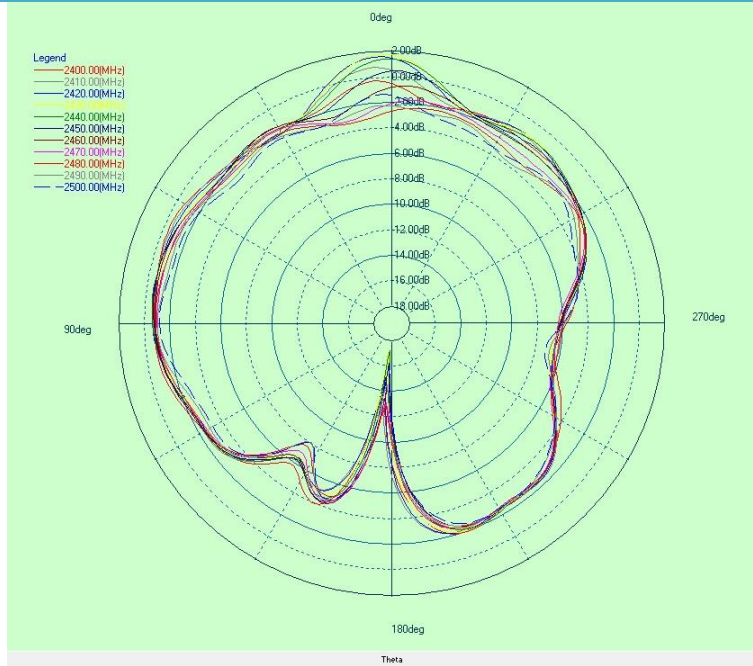
### (3) Radiation Pattern



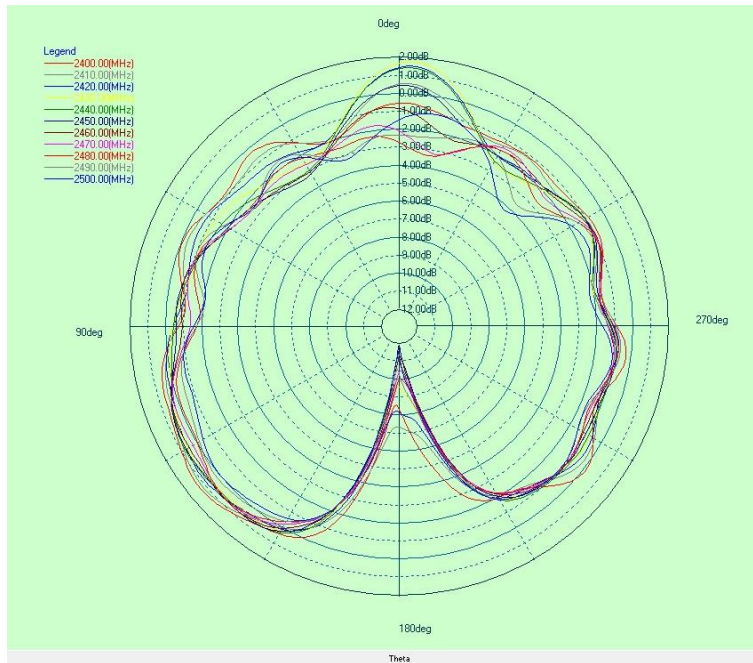
SBR Communication has possession of proprietary information provided in this report and this proprietary information shall be kept in strict confidence and not disclosed to any person or firm without the prior written consent of SBR Communication Technology.

地址：深圳市宝安区西乡街道鹤州社区恒丰工业城B25栋二层

TEL: 0755-82790675, FAX: 0755-82809726 [www.surbaner.com.cn](http://www.surbaner.com.cn)



Y-Z Plane

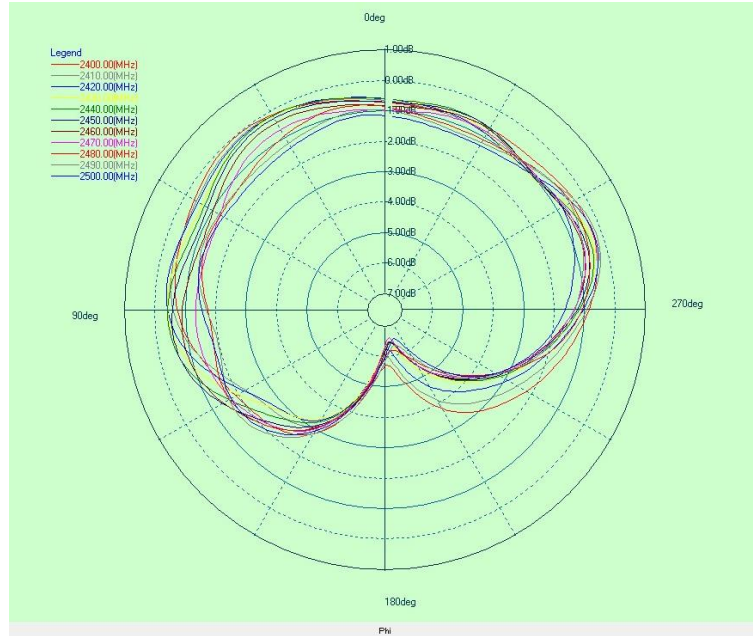


X-Z Plane

SBR Communication has possession of proprietary information provided in this report and this proprietary information shall be kept in strict confidence and not disclosed to any person or firm without the prior written consent of SBR Communication Technology.

地址：深圳市宝安区西乡街道鹤州社区恒丰工业城B25栋二层

TEL: 0755-82790675, FAX: 0755-82809726 [www.surbaner.com.cn](http://www.surbaner.com.cn)



X-Y Plane

| Frequency     | 2400MHz | 2450MHz | 2490MHz |
|---------------|---------|---------|---------|
| Avg. gain dBi | 1.20    | 0.90    | 0.35    |
| Peak gain dBi | 2.6     | 2.6     | 2.4     |
| Efficiency %  | 62%     | 55%     | 52%     |

### ● Dependability Test

|                       |             |
|-----------------------|-------------|
| Test Temperature      | 25°C±3°C    |
| Operating Temperature | -25°C~+85°C |
| Temperature           | 5~+40°C     |
| Relative Humidity     | 20~70%HR    |

SBR Communication has possession of proprietary information provided in this report and this proprietary information shall be kept in strict confidence and not disclosed to any person or firm without the prior written consent of SBR Communication Technology.

地址：深圳市宝安区西乡街道鹤州社区恒丰工业城B25栋二层

TEL: 0755-82790675, FAX: 0755-82809726 [www.surbaner.com.cn](http://www.surbaner.com.cn)