

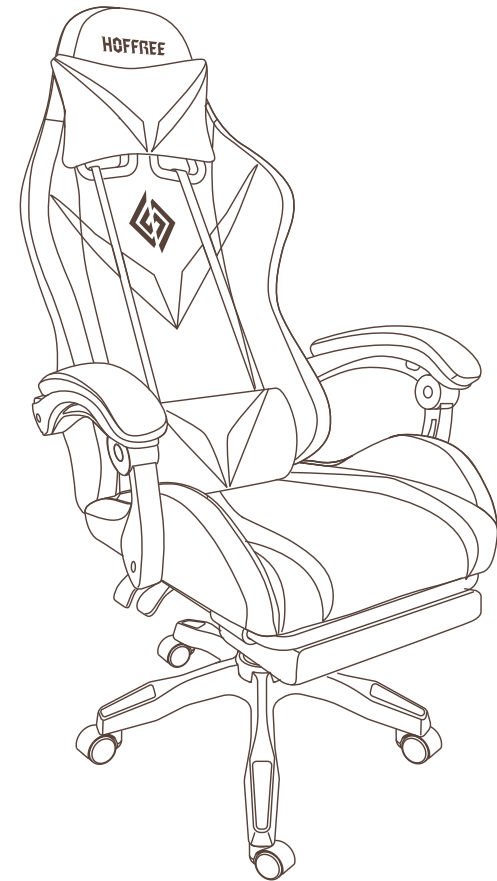


Hoffree, Provide the best office and home
environment to you.

 URL: <http://www.hoffree.com>

 Email: service@hoffree.com

MADE IN CHINA



Gaming Chair

User Manual

WHO ARE WE?

Hoffree is a brand that helps users enjoy life better.
Its slogan is Hoffree, Provide the best office and home environment to you.

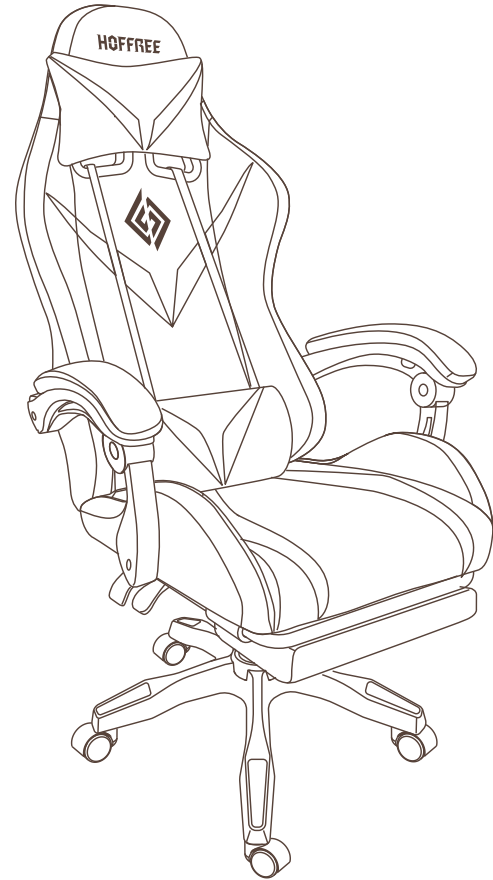
Our purpose is to create a comfortable office environment.

Through our efforts, we have a strong and stable design and production team. At present, gaming chair, computer desk, bookcase and other products of Hoffree have become one of the hot products in the market.



Hoffree, Provide the best office and home environment to you.

Please believe that we can further improve our products and services with your accompany, so as to provide better customer experience.



Product specification

Brand: Hoffree
Product Name: Gaming Chair
Product Weight: 70lb
Weight Capacity: 450lb
Effective Distance: 32ft

Product Dimensions: 23.62x23.62x52.28in
The Name Of The Bluetooth : HuaBox
Working power Supply: 5V/2A
charging pad as the main power supply

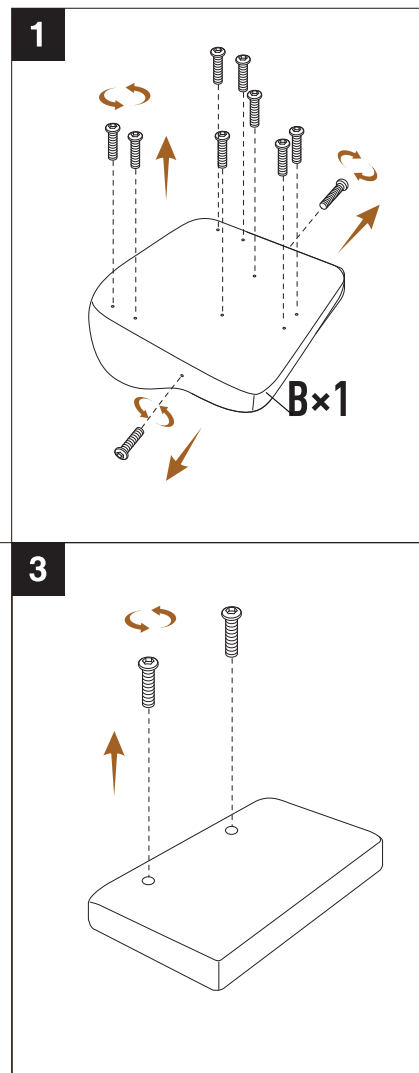
ATTENTION

Some screws are pre-installed on the chair and are NOT included in the hardware pack.



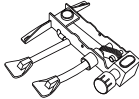
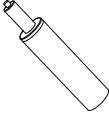
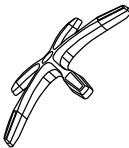
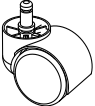
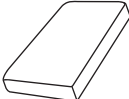
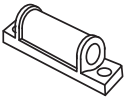
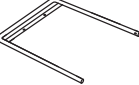



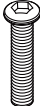
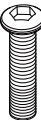

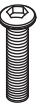

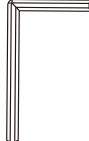

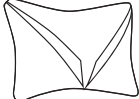
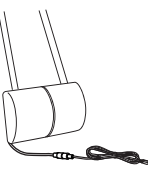

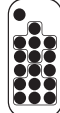

Please check the screw number according to the instruction manual and look for it on the chair!

 **HOFFFREE**

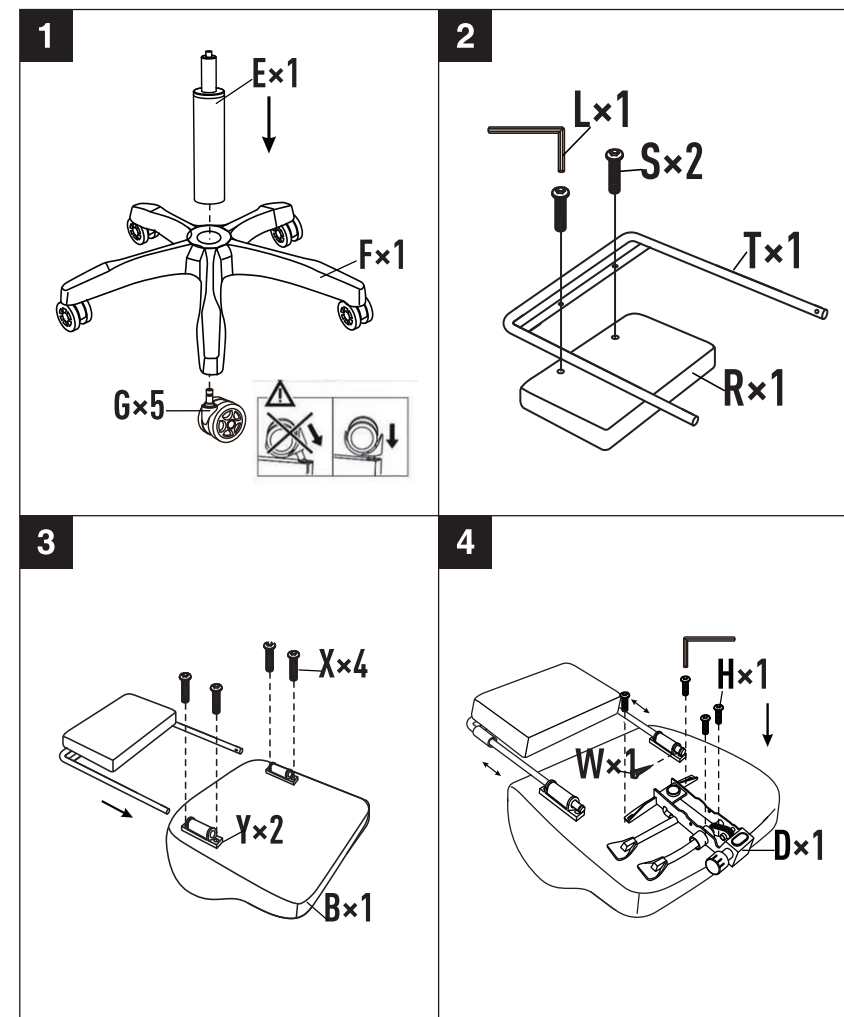
Please remove the pre-installed screws before installation



PACKING LIST

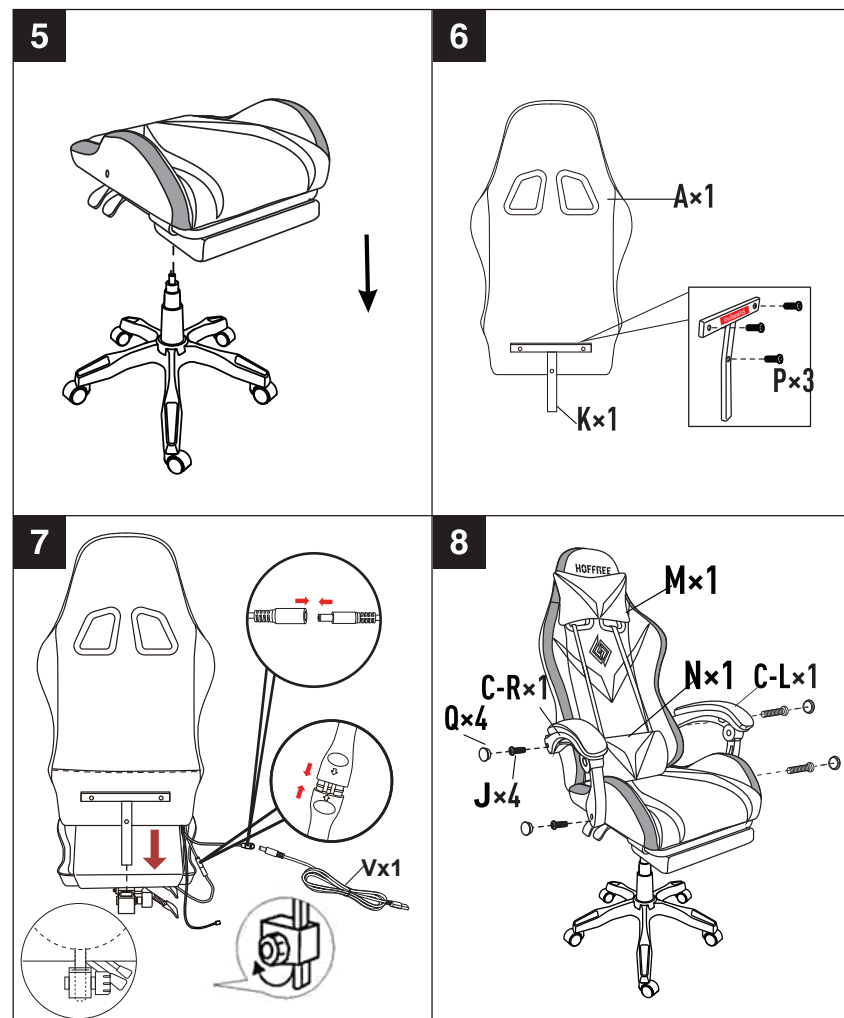
A*1 	B*1 	D*1 	E*1 	F*1 
G*5 	R*1 	Y*2 	T*1 	C-R*1 
C-L*1 	H*4  6*20mm	P*3  6*40mm	J*4  8*40mm	X*4  6*25mm
S*2  6*30mm	W*1  5x10mm	L*1 	K*1 	M*2 
N*1 	Q*1 	U*1 	V*1 	

INSTALLATION



Note: All screws have been preassembled to the accessories. Please remove them from the accessories before assembling.

INSTALLATION



Note: All screws have been preassembled to the accessories. Please remove them from the accessories before assembling.

FUNCTIONS OF EACH BUTTON

	ON&OFF	
	Speed adjustment	
	358 flker patterns to change	
	Brightness adjustment	
	LOCK Match: Press and hold "LOCK" for 5 seconds until green strip flash 3 times. Cancel the match: Press and hold "LOCK" for 5 seconds until white strip flash 3 times.	
	Auto mode Press to play automatically 358 modes. Press 5 times to enter color RGB mode Single cycle play Under AUTO mode, press "SETTING" once, then press "LOCK" once to cycle the current pattern.	
	SETTING Adjust the LED quantity: Press and hold for 5 seconds until white strip flash to enter the setup menu. Press MODE +/- to adjust the quantity of the LED light. Press "SETTING" to finish the setting.	
	Static Monochrome Mode White, Red, Green, Purple, Yellow, Blue, Pink	
<p>Long press the setting key to enter the setting mode</p> <p>MODE+/- adjust the lighting part (left/right side of backrest/entire seat cushion)</p> <p>SPEED+/- to adjust the number of lamp beads (cannot be adjusted when the light strips are fully on, only when part of the light strips are on, the number of lamp beads can be increased or decreased)</p>		

USAGES

Testing	Continuously press "AUTO" 5 times to enter the RGB automatic switching mode, which can test the your LED.
Matching	Press "LOCK" for 5 seconds until LED flash in green quickly to match the remote control with the receiving controller. Press "LOCK" for 5 seconds until LED flash in white slowly to un-match.
Reorder RGB	Different kinds of LED, the RGB keys may not perfectly match to your LED, reorder them if needed. Continuously press "SETTING" 5 times until LED flash in white once and then turn into all white, press the "R" until LED is red, press "G" until LED is green, press "B" until LED is blue, finally press "SETTING" once to finish your setting.
Adjust the LED quantity	Press "SETTING" for 5 seconds until LED flash in white to enter the setup menu. Press "MODE +/-" or "SPPED +/-" to add/reduce the quantity of the LED pixels. Finally press "SETTING" once to finish the setting.

TROUBLESHOOTING

Fault conditions	Possible causes	Exclusion method
The product is shaking and unstable	<ol style="list-style-type: none"> 1. Wrong screw installation 2. The screw is broken 3. Check that the screws are not tightened in place 	<ol style="list-style-type: none"> 1. According to the instruction manual, install the correct screw in the correct position 2. To replace, use the included spare screws 3. Tighten the loose screws
The light strip is off	<ol style="list-style-type: none"> 1. Not plugged in 2. The lighting pattern is not saved correctly 	<ol style="list-style-type: none"> 1. Confirm that the product is powered on normally 2. Please read the instructions of the remote control carefully (page 6), and follow the operation
Audio doesn't work	<ol style="list-style-type: none"> 1. Bluetooth connection failed 2. Bluetooth connection error 	<ol style="list-style-type: none"> 1. Turn on your phone's bluetooth to connect 2. Turn off the phone's Bluetooth and reconnect (Bluetooth name: HuaBox)
Remote control not working	<ol style="list-style-type: none"> 1. The remote control gasket is not pulled out and cannot work 2. The battery is in poor contact or the battery is installed backwards 3. The battery is dead 	<ol style="list-style-type: none"> 1. Check whether the remote control gasket is pulled out 2. Check whether the battery is installed incorrectly and adjust 3. Replace the new battery to make the remote control work normally

WARRANTY & SUPPORT

Thanks for purchasing our product. For any advice about the product or wanna know other products of *Hoffree*.

Please visit *Hoffree* official website www.hoffree.com or Amazon.

Your purchase and support will be our driving force!

FCC Warning Statement: Changes or modifications to this unit not expressly approved by the party responsible for compliance could void the user's authority to operate the equipment. This equipment has been tested and found to comply with the limits for a Class B digital device, pursuant to Part 15 of the FCC Rules. These limits are designed to provide reasonable protection against harmful interference in a residential installation. This equipment generates, uses and can radiate radio frequency energy and, if not installed and used in accordance with the instructions, may cause harmful interference to radio communications.

However, there is no guarantee that interference will not occur in a particular installation. If this equipment does cause harmful interference to radio or television reception, which can be determined by turning the equipment off and on, the user is encouraged to try to correct the interference by one or more of the following measures:

- Reorient or relocate the receiving antenna.
- Increase the separation between the equipment and receiver.
- Connect the equipment into an outlet on a circuit different from that to which the receiver is connected.
- Consult the dealer or an experienced radio/TV technician for help.

This device complies with Part 15 of the FCC Rules. Operation is subject to the following two conditions: (1) this device may not cause harmful interference, and (2) this device must accept any interference received, including interference that may cause undesired operation.

FCC Radiation Exposure Statement

The device has been evaluated to meet general RF exposure requirement. The device can be used in portable exposure condition without restriction.