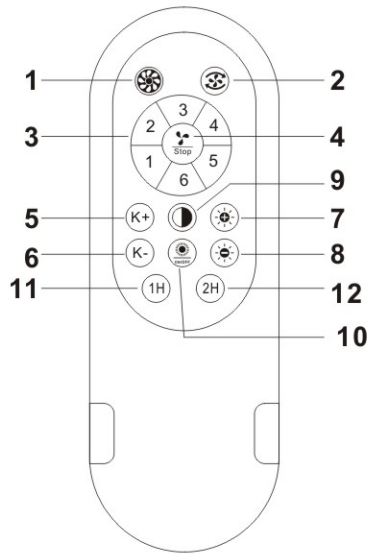
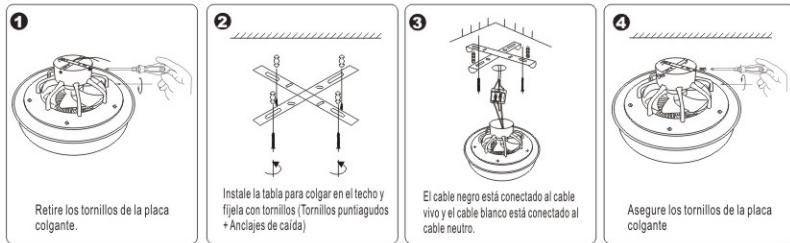
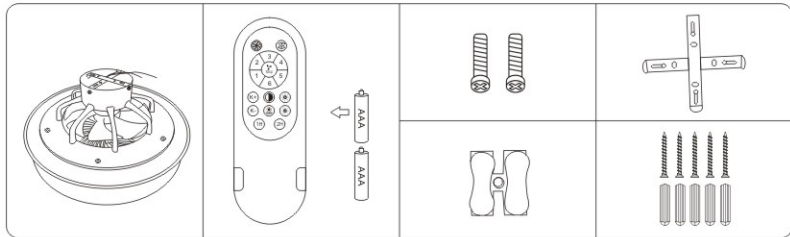


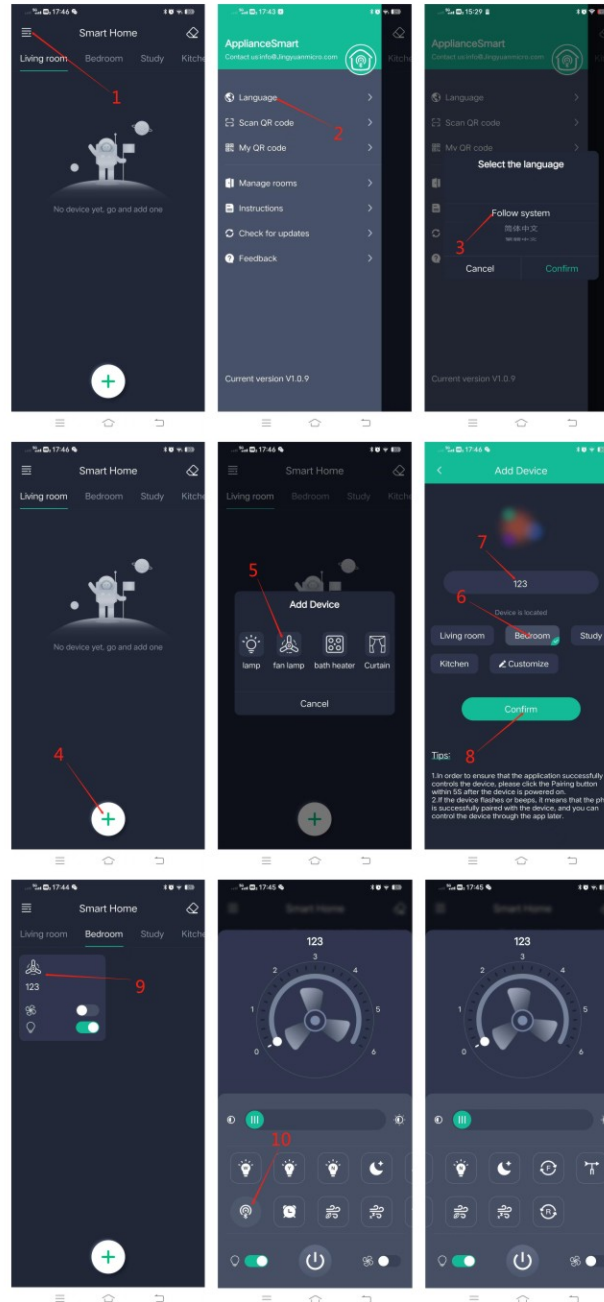
📍 Instalationsanleitung



1		Guía de aire + clave de cabeza basculante (ignorado sin guía de aire)
2		Ventilador positivo/reverso
3		Velocidad del ventilador, 1 es el más débil, 6 es el más fuerte
4		Ventilador apagado + (clave de código claro)
5		Haga clic o mantenga pulsado este botón para mejorar el brillo
6		Haga clic o mantenga pulsado este botón para atenuar el brillo
7		Mantenga pulsado el botón para aumentar la temperatura de color
8		Mantenga pulsado el botón para reducir la temperatura de color
9		Hotkey temperatura de color 3000K/4000K /6000K+ código
10		Interruptor de luz
11		Tiempo 1 hora
12		Tiempo 2 hora

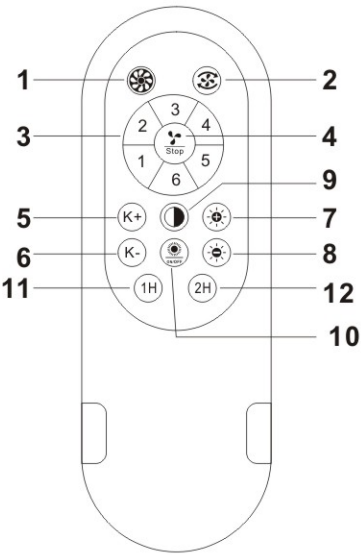
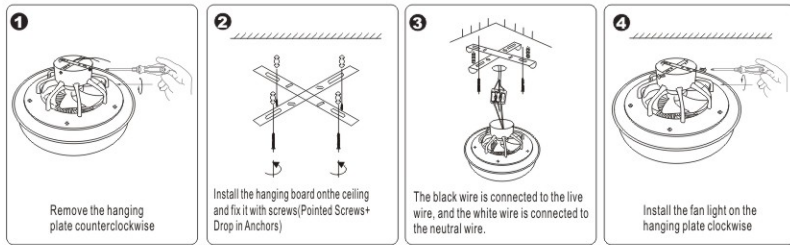
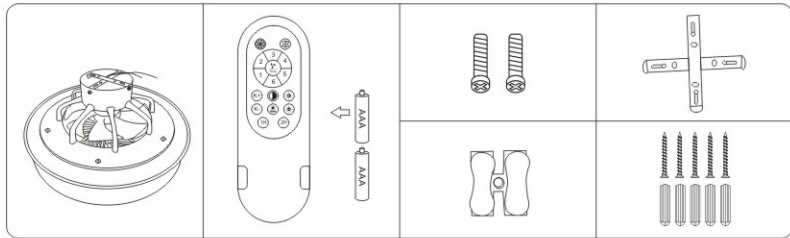
Benutzerhandbuch

Einstellungen



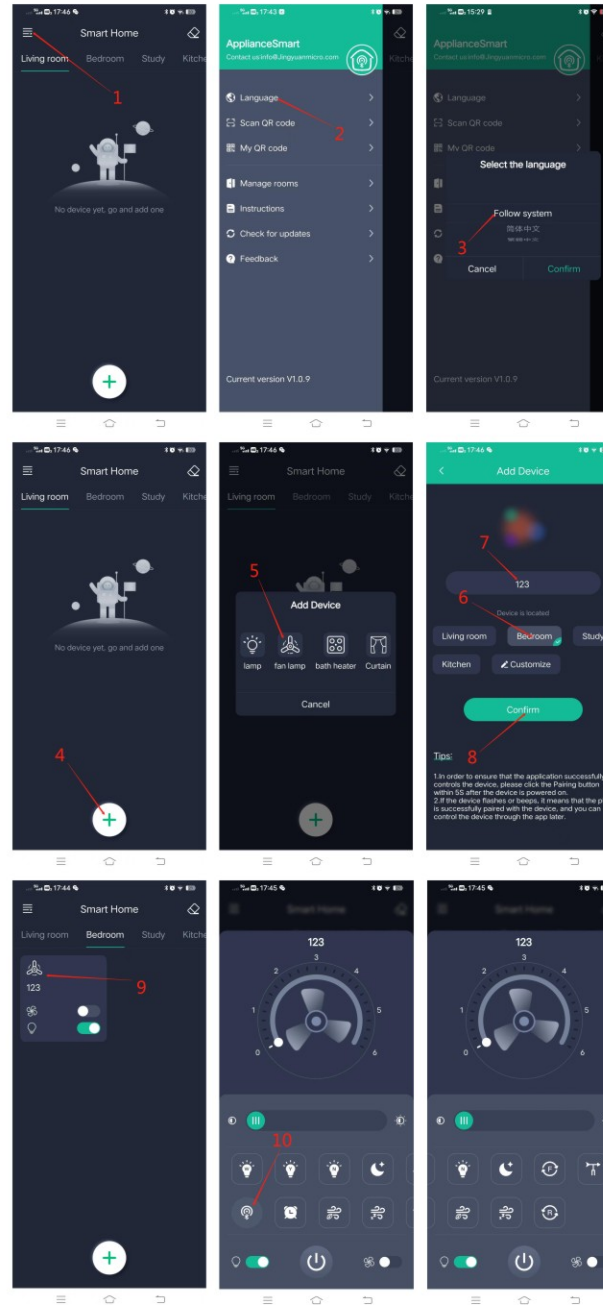
SP	Antes de usar la APLICACIÓN, debe activar la función Bluetooth de su teléfono móvil.
	Botón de emparejamiento: para asegurarse de que la aplicación puede controlar el dispositivo con éxito, haga clic en este botón dentro de los 5 segundos después de que el dispositivo se enciende. Si el dispositivo parpadea o emite un pitido, significa que el teléfono se ha emparejado con el dispositivo con éxito. A continuación, puede controlarlo a través de la aplicación.
	El botón del tiempo, después de hacer clic, puede seleccionar el tiempo para apagar el dispositivo
	Presione el ventilador para soplar el viento como el viento de la naturaleza.
	El viento del ventilador después de hacer clic es adecuado para dormir.
	Después de hacer clic, el ventilador girará hacia atrás.
	Haga clic para cambiar la dirección del viento que sopla
	La fan girará hacia adelante después de hacer clic
	Cuando haga clic, las luces blancas y amarillas se encenderán al mismo tiempo, pero solo el 10% del brillo máximo.
	Después de hacer clic, la luz blanca y amarilla se encenderán al mismo tiempo, y el brillo es el máximo
	La luz amarilla se iluminará después de hacer clic y será el brillo máximo
	Después de hacer clic, la luz blanca se encenderá y el brillo será máximo
	Interruptor de luz
	Interruptores para ventiladores y luces
	Interruptor de ventilador

Installation Manual



1		Air guide + shake key (ignore no air guide)
2		Fan forward/reverse
3		For fan speed, 1 is the weakest and 6 is the strongest
4		Fan Off + (code clearing key)
5		Click or hold this button to increase the brightness
6		Click or hold this button to dim the brightness
7		Press and hold the button to increase the color temperature
8		Press and hold the button to reduce the color temperature
9		Hot-key color temperature 3000K/4000K/6000K+ Matching code
10		Light switch
11		Timing 1 hour
12		Timing 2 hour

User Manual



EN	Before using the APP, you need to turn on the Bluetooth function of your mobile phone.
	The pairing button. To ensure that the application can successfully control the device, please click this button within 5 seconds after the device is powered on. If the device blinks or beeps, it means the phone has been successfully paired with the device, which can then be controlled through an app.
	Timing button. You can select the time to shut down the device
	The wind blown by the fan after clicking is like the wind in nature.
	The wind blown by the fan after clicking is suitable for sleep.
	The fan will rotate reverse after clicking.
	Click to change the direction of the wind blowing out.
	After you click, the fan rotates forward.
	When you click, the white light and the yellow light will light up at the same time, but only at 10% of the maximum brightness.
	When clicked, the white and yellow light will light up at the same time, and the brightness will be the maximum brightness.
	When clicked, the yellow light will light up at its maximum brightness.
	When clicked, the white light will light up at maximum brightness.
	Light switch.
	Fan and light switch
	The fan switch

This device complies with part 15 of the FCC Rules. Operation is subject to the following two conditions: (1) this device may not cause harmful interference, and (2) this device must accept any interference received, including interference that may cause undesired operation.

Any changes or modifications not expressly approved by the party responsible for compliance could void the user's authority to operate the equipment.

NOTE: This equipment has been tested and found to comply with the limits for a Class B digital device, pursuant to Part 15 of the FCC Rules. These limits are designed to provide reasonable protection against harmful interference in a residential installation. This equipment generates, uses and can radiate radio frequency energy and, if not installed and used in accordance with the instructions, may cause harmful interference to radio communications.

However, there is no guarantee that interference will not occur in a particular installation.

If this equipment does cause harmful interference to radio or television reception, which can be determined by turning the equipment off and on, the user is encouraged to try to correct the interference by one or more of the following measures:

- Reorient or relocate the receiving antenna.
- Increase the separation between the equipment and receiver.
- Connect the equipment into an outlet on a circuit different from that to which the receiver is connected.
- Consult the dealer or an experienced radio/TV technician for help.

The device has been evaluated to meet general RF exposure requirement. The device can be used in portable exposure condition without restriction