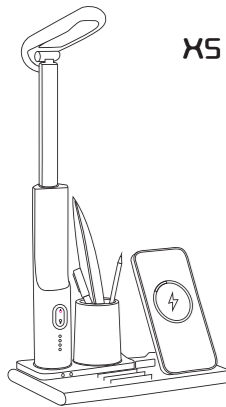


# 台灯无线充 使用说明书



X5

## 产品特点

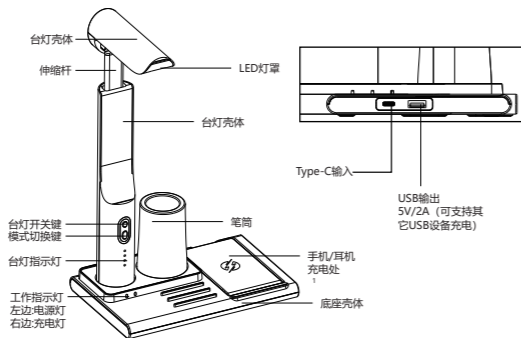
- 1、本产品是一款集无线充、台灯、大容量笔筒、手机支架为一体的多功能产品，既可给手机无线充电，还可给耳机充电，自带可伸缩台灯，具有收纳美观、护眼矫正的特点；
- 2、台灯底部使用pogo pin磁吸连接，可以很方便取下来单独作为移动照明使用；
- 3、多重安全保障：产品内置MCU和充电管理IC芯片，具备过流、过压、过温、短路异物检测等多重保护，达到快速充电效果。

**包装清单：**无线充底座\*1、折叠台灯\*1、笔筒\*1、Type-c电源线\*1、说明书\*1

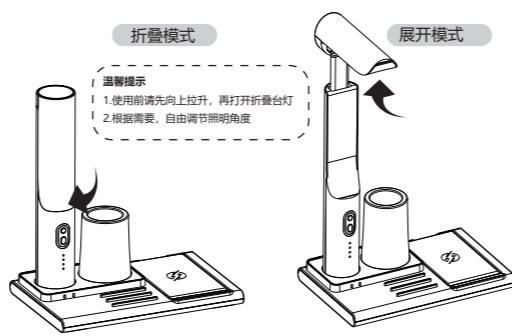
## 产品规格

产品名称	台灯无线充	产品型号	X5
材质	ABS+电子元件	净重	458g
手机充电功率	5W/7.5W/15W	耳机充电功率	5W
台灯工作功率	3.5W	输入接口	Type-C
输入电流	9V/3A(max)	台灯电池容量	1000mAh聚合物
台灯续航时间	1H(独立使用)		
充电充满时长	手机2.5H, 耳机2.1H, 台灯1.2H		
产品尺寸	200mm*130mm*390mm(展开状态) 200mm*130mm*225mm(折叠状态)		

## 产品描述

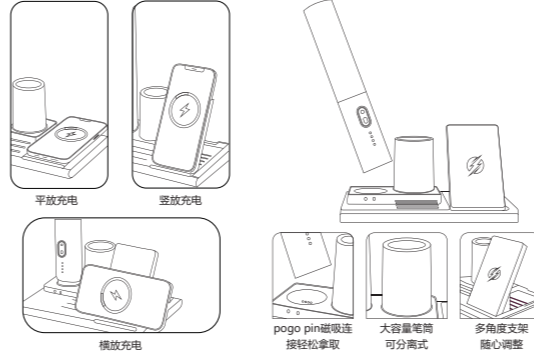


## 使用步骤



- 1.请将适配器连接电源线插入Type-C输入端口（为实现产品最佳性能，建议使用9V/3A及以上适配器）；
- 2.请将您的手机/耳机放至指定充电区域即可开始充电；
- 3.按键功能：
  - ①台灯开关键：短按开启/关闭台灯；
  - ②模式切换键：短按切换灯光模式（白光、黄光、白黄光）；
- 4.台灯指示灯：
  - ①充电时，第一颗白灯闪烁，电量达到25%，第二颗闪，依次类推，充满电后四颗灯常亮；
  - ②低电压报警，底部第一颗灯闪烁5秒后台灯灭；
- 5.工作指示灯：
  - ①左边为电源接通指示灯，淡白色指示灯常亮；
  - ②右边为手机/耳机充电指示灯，淡蓝色指示灯常亮；
  - ③FOD异物检测：右边淡蓝色指示灯闪烁。

## 功能展示



## 适用设备

### 1、智能手机

**苹果：**iphone8-13全系列

**华为：**P50Pro、Mate40系列、Mate30系列、Mate20系列、P40Pro、P40Pro+、P30Pro

**三星：**Galaxynote20系列、Galaxynote10系列、Galaxynote9系列、Galaxynote8系列、Galaxynotes20系列、Galaxynotes10系列、Galaxynotes9系列、Galaxynotes8系列、Galaxy7edge、Galaxy7、Galaxy6edge、Galaxy6

**小米：**小米12全系、小米11全系、小米10全系、小米9全系、小米9至尊透明、小米9Pro、小米mix4、小米mix3、小米mix2S

**OPPO：**OPPOAce2、OPPO Findx3、OPPO Find X3Pro、OPPO Find X5 Pro

**VIVO：**VIVO X70Pro+、VIVO X80 Pro、VIVO X Note

**一加：**一加10Pro、一加9Pro、一加8Pro

**HONOR：**HONOR Magic3、HONOR Magic4、HONOR Magic4Pro

### 2、智能耳机：

**苹果：**Airpods3(Pro)、Airpods2(无线充电版)、GalaxyBuds/Buds+、FreeBuds2/3和其他支持无线充电的耳机；

**注：**(表中只举例常见机型，请自行查询您的设备是否支持无线充电，以上所有设备必须符合Qi标准)

## 注意事项

- 1、请保持充电器远离水或其它液体，如不小心粘上液体马上用干纸巾或干布擦干净；
- 2、请勿将无线充电器暴露在高温处或发热设备的周围，如日照、取暖、微波炉、烤箱或热水器等；
- 3、请勿使用不匹配的电源适配器或电源线给无线充电器供电；
- 4、避免金属异物长期放置在无线充电器表面，以免引起设备故障或发热；
- 5、请勿私自拆卸零件，以免导致机器故障或损坏；
- 6、展开台灯时，一定要先向上拉伸完全后展开台灯，否则有可能损坏台灯；
- 7、使用环境温度需在0~45℃范围内。

### 无线充电器不充电的常见原因

- 1、检查无线充底座上的指示灯有没有亮起，如果没有亮起，请检查电源线是否连接好或移动一下手机充电的位置；
- 2、检查适配器是否至少有9V/2A输出，最好是有9V/3A输出的；
- 3、手机官网查询所用手机是否支持无线充功能，如不支持可加装一个无线充电接收背夹来实现；
- 4、检查所充耳机是不是在上述“适用设备”范围内，否则不支持。

## 保修卡

请妥善保管此卡,本公司将以此卡作为保修凭证  
感谢您购买本产品,本产品的保修期为购买期之日起12个月,请务必妥善保存,并填写详细相关信息。以备保修使用。

产品型号: \_\_\_\_\_ 购买日期: \_\_\_\_\_

经销商名称: \_\_\_\_\_

用户姓名: \_\_\_\_\_ 联系电话: \_\_\_\_\_

地址: \_\_\_\_\_

退货理由:  退货  换货  保障

### 保修条件

需要保修服务时,请出示本卡并请详细填写相关内容,本公司向用户提供自产品购买日起12个月保用期

### 保修范围

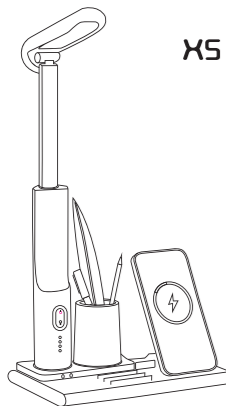
在正常使用状态下出现的质量问题,并非外力破坏造成的损坏,产品保修期间,因无法使用该产品而造成的不便或损坏,本公司均不承担任何责任,原则上产品属于保修期间的用户不需支付费用,但着人力损坏则需酌情收取检测或零配件费用,产品超出保修期的一律收费。

### 以下情况不能享受保修

人力损坏:如因使用不当,错误造成破坏,外观不正常磨损、摔损,电路烧毁、挤压变形、异物进入、受潮、产品上的密封标签被涂改或撕毁、以及其他任何可见人为损坏,其他情况如用户自身原因(擅自拆装修改、使用不慎、操作不当进水等人为情况)所造成的损坏,因不可抗力造成的损坏,如地震、火灾、火灾、台风或战争等。

## Desk lamp wireless charger

# Instructions



X5

### Product Characteristics

- 1.It is a multi-functional product integrating wireless charging, desk lamp, large-capacity pen holder, cell phone stand, both wireless charging for cell phones, can also charge headsets. It has a retractable desk lamp, with features of beautiful storage, eye protection and posture correction.
- 2.Bottom of the lamp is connected by pogo pin magnetic, which can be easily taken down alone as mobile lighting.
- 3.Multiple security: this product has built-in MCU and charging management IC chip, with multiple protection such as over-current, over-voltage, over-temperature, short-circuit foreign body detection, to achieve fast charging effect.

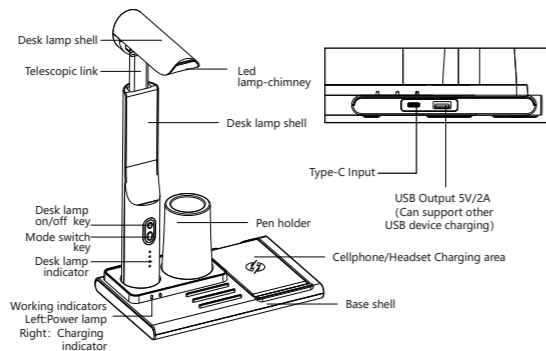
**Packing list:** Wireless charging base \*1, Folding desk lamp \*1, Pen holder \*1, Type-c power cord \*1, Manual \*1

7

### Product Parameter

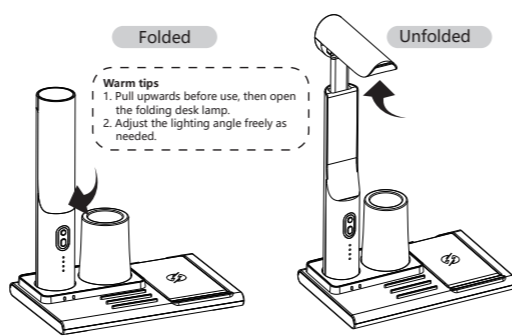
Product Name	Desk lamp wireless charger	Product Model	X5
Material	ABS + Electronic components	Net Weight	458g
Mobile Phone Charging Power	5W/7.5W/15W	Earphone Charging Work	5W
Desk Lamp Working Power	3.5W	Input interface	Type-C
Input Current	9V/3A(max)	Desk Lamp Battery Capacity	1000mAh Polymer battery
Desk Lamp Working Hours	1H(Independent use )		
Full Charge Time	Mobile Phone2.5H, Headset 2.1H, Desk Lamp1.2H		
Product Size	200mm*130mm*390mm(Unfolded mode) 200mm*130mm*225mm(Folded mode)		

### Product Description



8

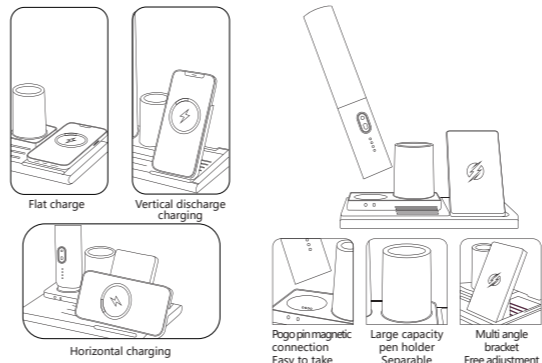
### Use steps



1. Please plug the adapter into Type-C input port by connecting the power cable (for best performance of the product, it is recommended to use 9V/3A and above adapter).
2. Please put your phone/headset to the designated charging area to start charging.
3. Key functions
  - ① desk lamp on/off key: short press to turn on/off the lamp.
  - ② mode switch key: short press to switch the light mode (white, yellow, white yellow light).
4. Desk lamp indicator
  - ① When charging, the first white light flashes, the power reaches 25%; the second one flashes, and so on; four lights are always on after a full charge.
  - ② Low voltage alarm, the first light at the bottom flashes for 5 seconds after the desk light goes out.
5. Working indicators
  - ① The left for power-on indicator, light white indicator is always on.
  - ② The right for phone/headset charging indicator, light blue indicator is always on.
  - ③ FOD foreign object detection: the right light blue indicator flashes.

9

### Function Display



### Applicable equipment

#### 1. Smartphone

**iPhone:** iPhone8-13 all series

**Huawei:** Huawei P50Pro, Huawei Mate40 series, Huawei Mate30 series, Huawei Mate20 series, Huawei P40Pro, Huawei P40Pro+, Huawei P30Pro

**Samsung:** Galaxynote20 series, Galaxynote10 series, Galaxynote9 series, Galaxynote8 series, Galaxynotes20 series, Galaxynotes10 series, Galaxynotes9 series, Galaxynotes8 series, Galaxy7edge, Galaxy7, Galaxy6edge, Galaxy6

**MI:** Xiaomi 12 series, Xiaomi 11 series, Xiaomi 10 series, Xiaomi 9 series, Xiaomi 9(Supreme transparent), Xiaomi 9Pro, Xiaomi mix4, Xiaomi mix3, Xiaomi mix2S

**OPPO:** OPPOAce2, OPPO Findx3, OPPO Find X3Pro, OPPO Find X5 Pro

**VIVO:** VIVO X70Pro+, VIVO X80 Pro, VIVO X Note

**ONEPLUS:** ONEPLUS 10Pro, ONEPLUS 9Pro, ONEPLUS 8Pro

**HONOR:** HONOR Magic3, HONOR Magic4, HONOR Magic4Pro

10

#### 2. Smart headsets.

Apple:Airpods3 (Pro), Airpods2 (wireless charging version), GalaxyBuds/Buds+, FreeBuds2/3 and other headphones that support wireless charging.

**Note:** (The table only gives examples of common models, please check whether your device supports wireless charging. All the above devices must comply with the Qi standard.)

### Caution

- 1.Please keep the charger away from water or other liquids, if it is accidentally stuck with liquid, please use dry tissue or dry cloth to wipe it clean immediately;
- 2.Do not expose the wireless charger to high temperatures or heat generating devices such as sunlight, heating, microwave ovens, ovens or water heaters;
- 3.Do not use a mismatched power adapter or power cord to power the wireless charger.
- 4.Avoid placing metal foreign objects on the surface of wireless charger for a long time, so as to avoid causing equipment failure or heating.
- 5.Do not disassemble the parts privately to avoid machine failure or damage;
- 6.When unfolding the lamp, please fully stretched upward first after unfolding it, otherwise there is a risk of damage to the lamp.
- 7.The ambient temperature should be within the range of 0 ~ 45 °C.

#### Common reasons for wireless charger out of service

- 1.Check whether the indicator light on the wireless charger base is on, if not, check whether the power cord is connected or move the charging position of phone;
- 2.Check whether the adapter has at least 9V/2A output, preferably with 9V/3A output;
- 3.Check whether the phone supports wireless charging function on the official website; if not, add a wireless charging receiving back clip to realize it;
- 4.Check whether the headsets is charged is within the scope of "applicable equipment", otherwise it is not supported.

11

### Warranty Card

Please keep this card properly. The company will take this card as the warranty certificate. Thank you for purchasing this product. The warranty period of this product is 12 months from the date of purchase. Please keep it properly and fill in detailed relevant information for warranty use.

Product model: \_\_\_\_\_ Date of purchase: \_\_\_\_\_

Dealer name: \_\_\_\_\_

User name: \_\_\_\_\_ Contact number: \_\_\_\_\_

Address: \_\_\_\_\_

Explain the reason:  Return goods  Exchange goods  Guarantee

#### Warranty conditions

When warranty service is required, please show this card and fill in the relevant contents in detail. The company provides users with a 1 2-month warranty period from the date of purchase

#### Warranty scope

The quality problem that appears under the normal use condition, is not the damage caused by the external force damage, the product warranty period, because can not use the inconvenience or damage caused by the product, the company assumes any responsibility, principle. The product belongs to the warranty period users do not have to pay the cost, but in the case of human damage is necessary to charge testing or spare parts costs, products beyond the warranty period of a-law charges.

#### Warranty is not available under the following circumstances

Manpower damage: for example, due to improper use, improper damage, abnormal wear and tear of appearance, falling damage, circuit destruction, extrusion deformation, entry of foreign matters, moisture, alteration or tearing of sealing labels on products, and any other visible man-made damage, and other conditions, such as the user's own personal reasons (unauthorized disassembly and modification, unafraid use, improper operation, water ingress, etc.) Damage caused by force majeure, such as earthquake, flood, fire, typhoon or war.

12

This device complies with part 15 of the FCC Rules. Operation is subject to the following two conditions: (1) This device may not cause harmful interference, and (2) this device must accept any interference received, including interference that may cause undesired operation.

Any Changes or modifications not expressly approved by the party responsible for compliance could void the user's authority to operate the equipment.

**Note:** This equipment has been tested and found to comply with the limits for a Class B digital device, pursuant to part 15 of the FCC Rules. These limits are designed to provide reasonable protection against harmful interference in a residential installation. This equipment generates uses and can radiate radio frequency energy and, if not installed and used in accordance with the instructions, may cause harmful interference to radio communications. However, there is no guarantee that interference will not occur in a particular installation. If this equipment does cause harmful interference to radio or television reception, which can be determined by turning the equipment off and on, the user is encouraged to try to correct the interference by one or more of the following measures:

- Reorient or relocate the receiving antenna.
- Increase the separation between the equipment and receiver.
- Connect the equipment into an outlet on a circuit different from that to which the receiver is connected.
- Consult the dealer or an experienced radio/TV technician for help.

This equipment complies with FCC radiation exposure limits set forth for an uncontrolled environment. This equipment should be installed and operated with minimum distance 20cm between the radiator & your body.