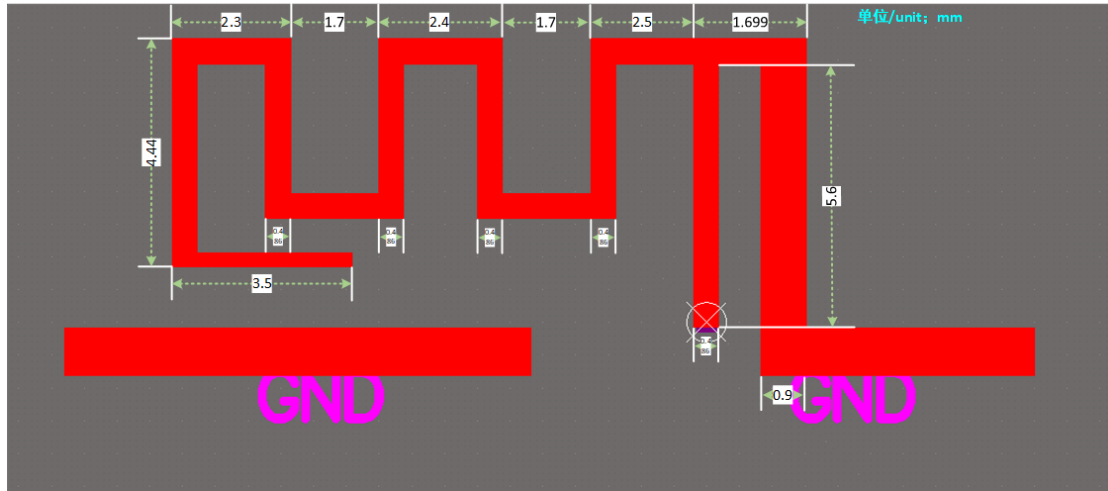


On-board Antenna Datasheet

1. Detailed dimensional specifications for the on-board antenna



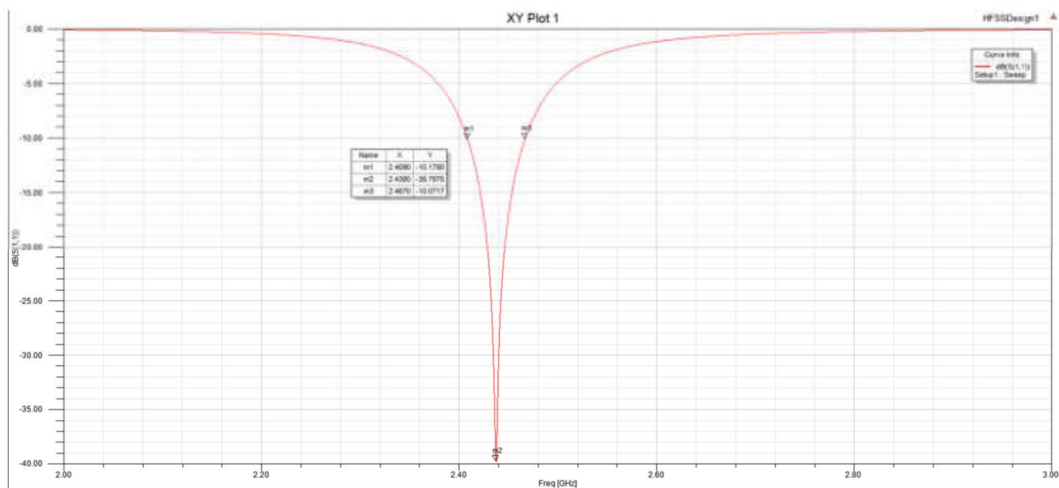
2. Features

- Ultra-small size: 2.8*9.95mm
- 50 ohm impedance
- Maximum gain: 1.29dBi
- Operates in the 2.4GHz band
- Manufacture: Nanjing Qinheng Microelectronics Co., Ltd

3. Antenna S parameter

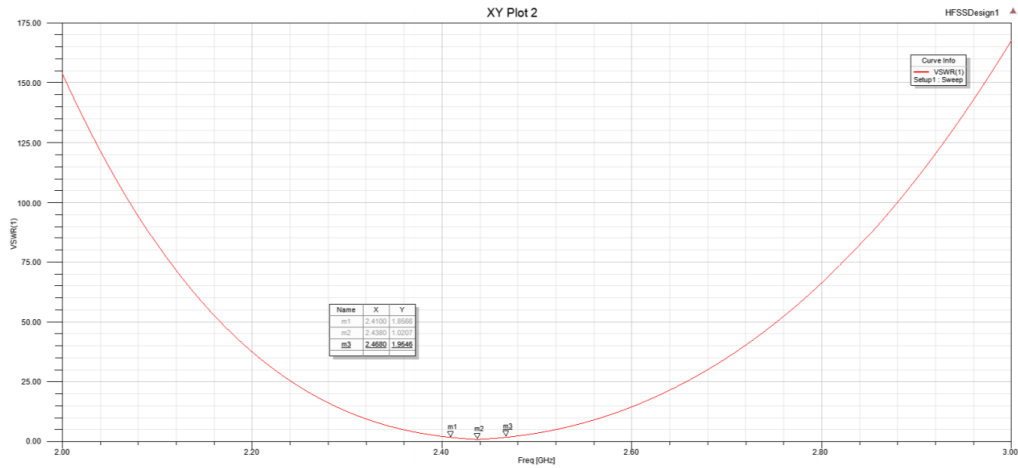
10dB operating bandwidth: 58MHz

Center band S11:-39.8dB@2.438GHz

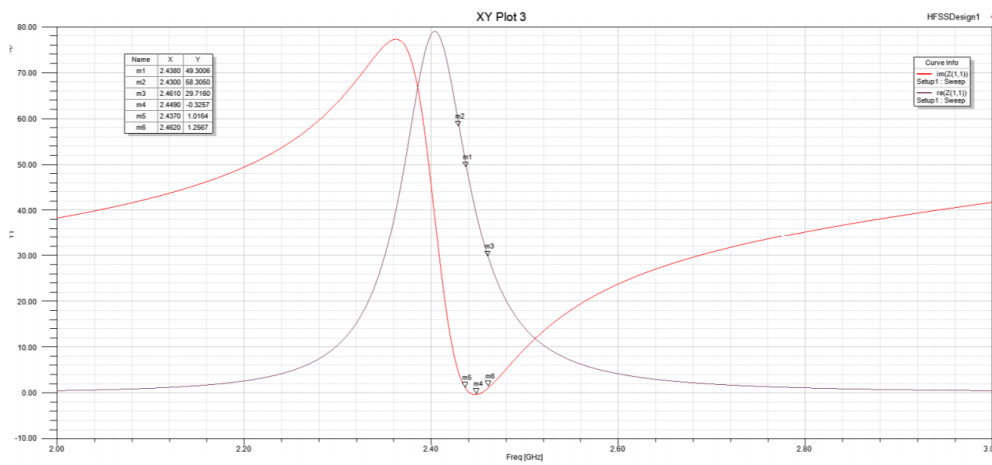


4. Antenna impedance and VSWR

Center point VSWR: [1.02@2.438GHz](#)

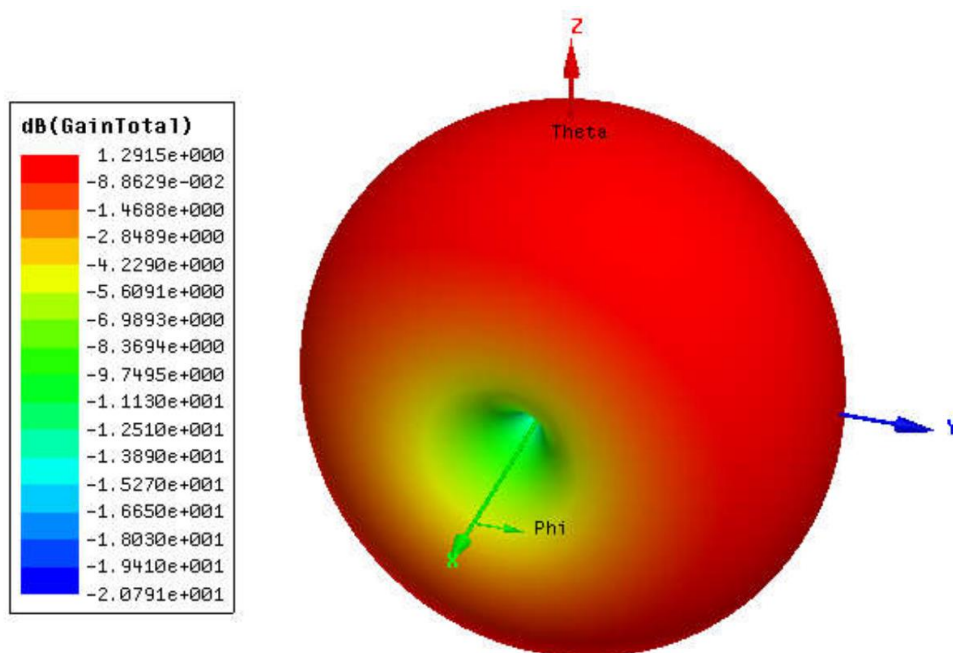


Center frequency point impedance: 50 ohms @ 2.438GHz



5. Antenna gain

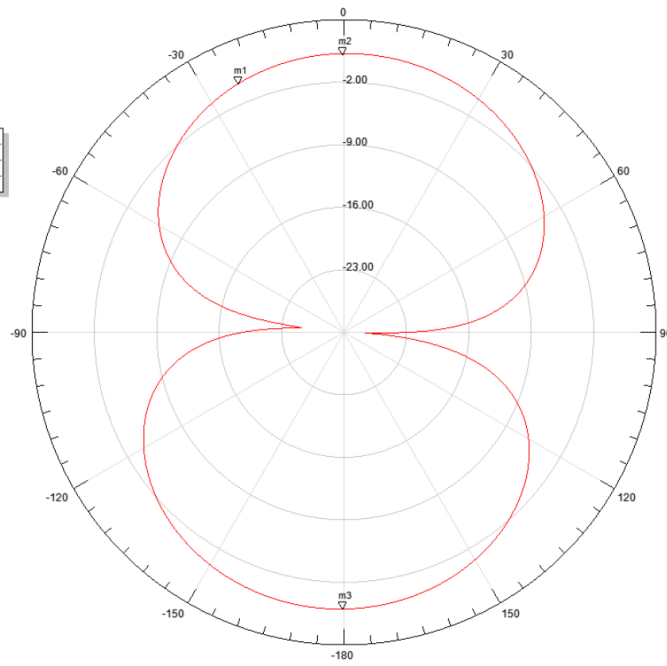
Maximum directional gain: 1.29dBi



E-side

Radiation Pattern 19

Name	Phi	Ang	Mag
m1	337.0000	-23.0000	0.2461
m2	360.0000	-0.0000	1.2040
m3	180.0000	180.0000	0.9857



Curve Info
max(dB(GainTheta))
Setup1: LastAdaptive
Freq=2.44GHz