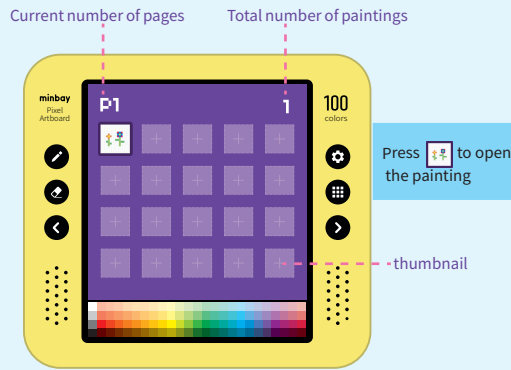


1. Browse the paintings

- Browse all the paintings in the form of thumbnails to make it easy to find them.
- Press the thumbnail of the painting to open the painting.



Press ◀ ▶ / Slide the screen to turn the page

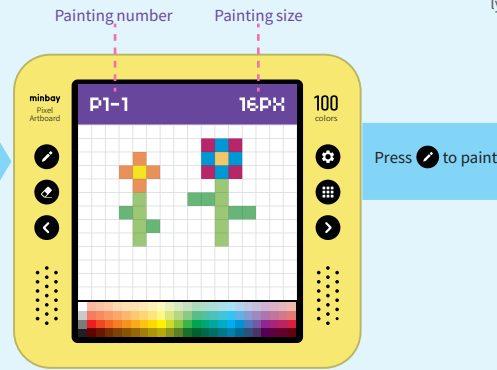
- Current number of pages: the current page number, P1 is page 1, a total of 1000 pages.
- Total number of paintings: the total number of paintings on all pages.

Quick operation

- Press "Current number of pages" to open Quick Page Flip.
- Press "Total number of paintings" and turn to the page where the latest painting is located.
- Press the Thumbnail key to switch between the first page and the current page.
- Press the pencil key to open the most recent blank painting and start painting.

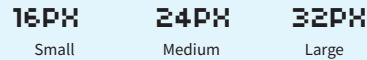
2. Open the painting

- Open the painting with full screen size so that you can enjoy the painting one by one.
- You can't edit the painting at this time, so you can browse the painting on a slippery screen.



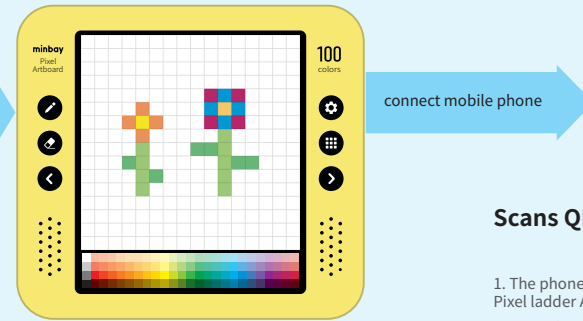
Press ◀ ▶ / Slide the screen to turn the page

- Painting number: each painting has its own location number and will not be changed. The number P1-1 indicates that the painting is in the first position on page 1.
- Painting size: the painting has 3 sizes, 16 × 16, 24 × 24, 32 × 32. It is represented by 16PX-24PX-32PX.



3. Start painting

- After the painting is opened, press the pencil button and you can draw.
- At this point, the pencil key light is on.
- The painting can be modified indefinitely and is automatically saved when you exit.



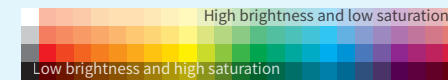
Press [Pencil icon] to activate pencil: draw / fill color

- After activating the pencil, your fingers can draw directly on the screen.
- If you press the screen for a long time, you can fill the color to the selected area.
- The area can be the same color or all blank areas.

Long press [Pencil icon] to set pencils: curves, lines, and circles

- Pencil can be drawn: curves, lines and circles.
- Draw the curve by default, and the settings will be saved automatically after you modify the settings.

Touch palettes: selecting color



▲ Reminder: you can choose colors only when the brush is active.

Press [Eraser icon] to activate Eraser: erase or empty handwriting

- After pressing the key to activate the eraser, the screen touch can erase the handwriting.
- Press the screen for a long time at this time, and you can clear all the handwriting.

Double-finger scaling: resizing paintings

- Zoom out the painting: press your fingers and hold the screen apart.
- Enlarge the painting: press and hold the screen with both fingers.

Double-finger drag: moving painting

- With both fingers holding down the screen, you can pan the painting and adjust the position of the painting.

Press [Left arrow] undo, press [Right arrow] redo

- The painting saves the latest 3000 steps of painting.
- Press the left key to undo the last step, and press the right key to resume the undo operation.
- Undo and redo cycle.
- If there is a new operation after undo, it cannot be redone.
- Long press right key to view the painting steps continuously.

Press [Home icon] to return to the thumbnail, and the painting is automatically saved.

- When you exit the painting state, the painting is saved automatically without additional action.
- Press the pencil or rubber key again to exit the painting state.

4. Backup & sharing

- Back up the painting to your phone or network through a Bluetooth connection.
- Communicate and share works with other enthusiasts through APP.



Scans QR code to download APP

1. The phone scans the QR code, downloads and installs the Pixel ladder APP.
2. Enter the settings after the artboard is booted, and scan the artboard SN bar code with APP to complete the addition.
3. After connecting, through APP, the painting can be backed up to the phone or shared with other enthusiasts.

You can also update and upgrade the artboard.

Attention

1. The packing part is not suitable for children to play and should be removed by adults to avoid danger.
2. Please turn off the machine when the product is not in use to avoid direct sunlight.
3. The battery cannot be used in an overheated environment and the user must not replace it by himself.
4. Please use a matching data cable or a FCC/CE certified power adapter for power supply.
5. Maintenance and purchase of accessories must be provided by a service provider designated by minbay Technology.
6. This product is not waterproof and should not be stored in a wet environment.

Warranty

1. After-sales service is carried out in accordance with local laws.
2. After-sales service shall be handled by contacting customer service personnel on the basis of invoice or order records.
3. After the expiration of the after-sales service period, and the product is not offline, Mengbei will still provide maintenance services, but you need to bear the corresponding costs.

This Warranty Does Not Cover

1. Damage caused by failure to follow the instructions.
2. Unauthorized disassembly, maintenance, misuse, alteration and other incorrect use.
3. Damage caused by using non-standard accessories.
4. Damage caused by man-made damage and force majeure.
5. Exceed the validity period of after-sales service.



Manufacturer: Shenzhen minbay Technology Co., Ltd.
Address: 1511 Zhongan Building, Plaza Road, Longgang District, Shenzhen City
Email: serves@minbay.com
Telegram: 86-0755-84826131.
Website: www.minbay.com.

Pixel Artboard Instruction Manual

MB701
V1.2

- Minbay Pixel Artboard is a small and convenient pixel painting tool, which is suitable for painting anytime and anywhere in indoor, outdoor, travel and other scenes.
 - Pixel Artboard contains the main functions such as painting, painting storage and browsing, painting backup and sharing.
- Instructions may be updated at any time without prior notice, please check at minbay.com

Long Press [Power key] to turn on / off
Short press [Power key] on / off screen

Power key

Press [Settings icon] to enter the Setting

Rope hole

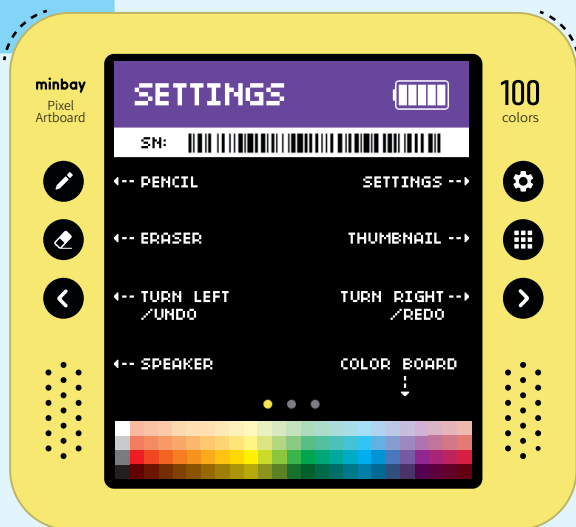
Package contains

- Pixel Artboard x 1
- Product description × 1
- Charging data line × 1

Product parameters

- Product name: Pixel Artboard
- Product model: MB701
- Product size: 114.4 × 103.4 × 14mm
- Product weight: 160g
- Battery capacity: 2000mAh
- Charge input: 5V=1.5A
- Charging interface: USB Type-C

- Optional colors: 100 colors
- Optional painting size: 16PX / 24PX / 32PX
- Number of paintings available: 20000paintings



Type-C charging interface

FCC Statement

This device complies with part 15 of the FCC rules. Operation is subject to the following two conditions: (1) this device may not cause harmful interference, and (2) this device must accept any interference received, including interference that may cause undesired operation.

Changes or modifications not expressly approved by the party responsible for compliance could void the user's authority to operate the equipment.

NOTE: This equipment has been tested and found to comply with the limits for a Class B digital device, pursuant to part 15 of the FCC Rules. These limits are designed to provide reasonable protection against harmful interference in a residential installation. This equipment generates uses and can radiate radio frequency energy and, if not installed and used in accordance with the instructions, may cause harmful interference to radio communications. However, there is no guarantee that interference will not occur in a particular installation. If this equipment does cause harmful interference to radio or television reception, which can be determined by turning the equipment off and on, the user is encouraged to try to correct the interference by one or more of the following measures:

- Reorient or relocate the receiving antenna.
- Increase the separation between the equipment and receiver.
- Connect the equipment into an outlet on a circuit different from that to which the receiver is connected.
- Consult the dealer or an experienced radio/TV technician for help.

The device has been evaluated to meet general RF exposure requirement. The device can be used in portable exposure condition without restriction.