

<b>AT_CRA</b>	<b>Technical Documentation</b>
---------------	--------------------------------

<b>Internal Photos</b>	
<b>FCC ID</b>	<b>2A88I-AT-CRA</b>

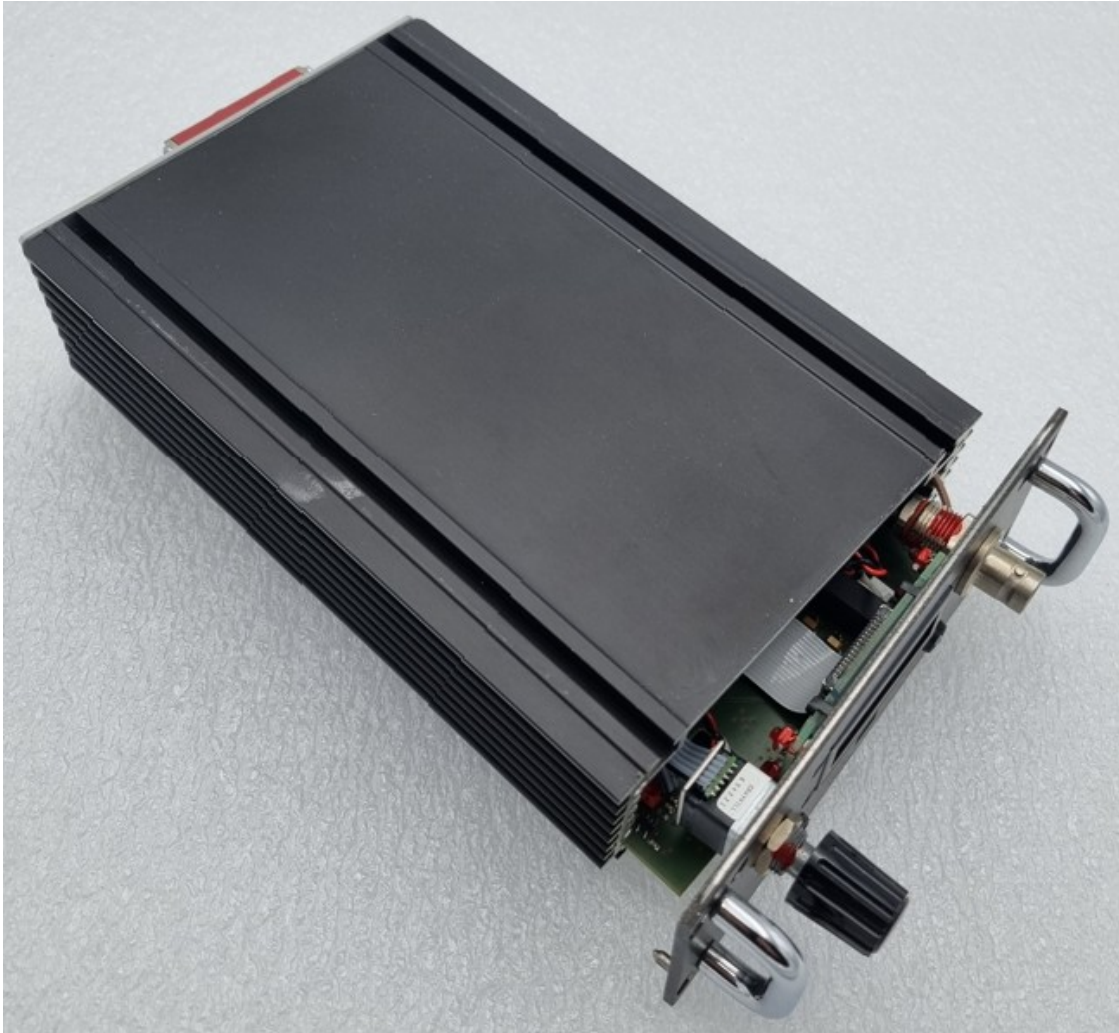
**Publication History**

<b>Version</b>	<b>Date</b>	<b>Modification description</b>
01	November 8, 2022	Creation of the document

**AT\_CRA**

# Technical Documentation

Internal Photos

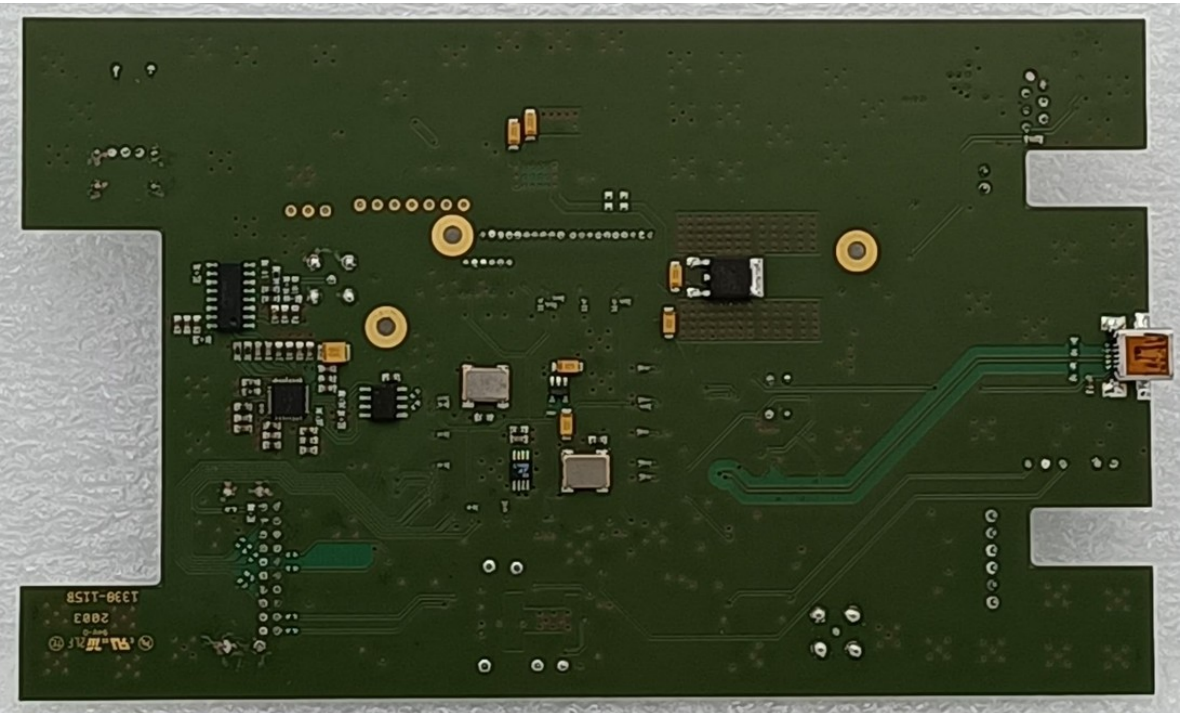
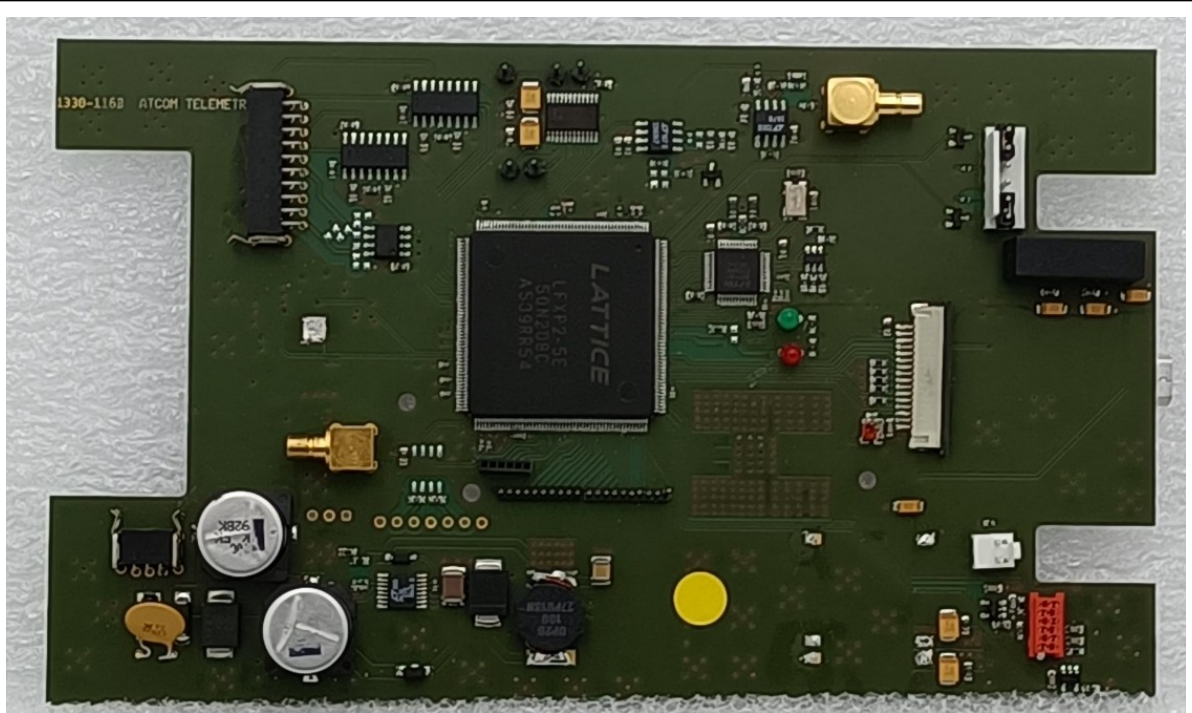


Device AT\_CRA\_ATR\_NUM Open View

AT\_CRA

# Technical Documentation

Internal Photos

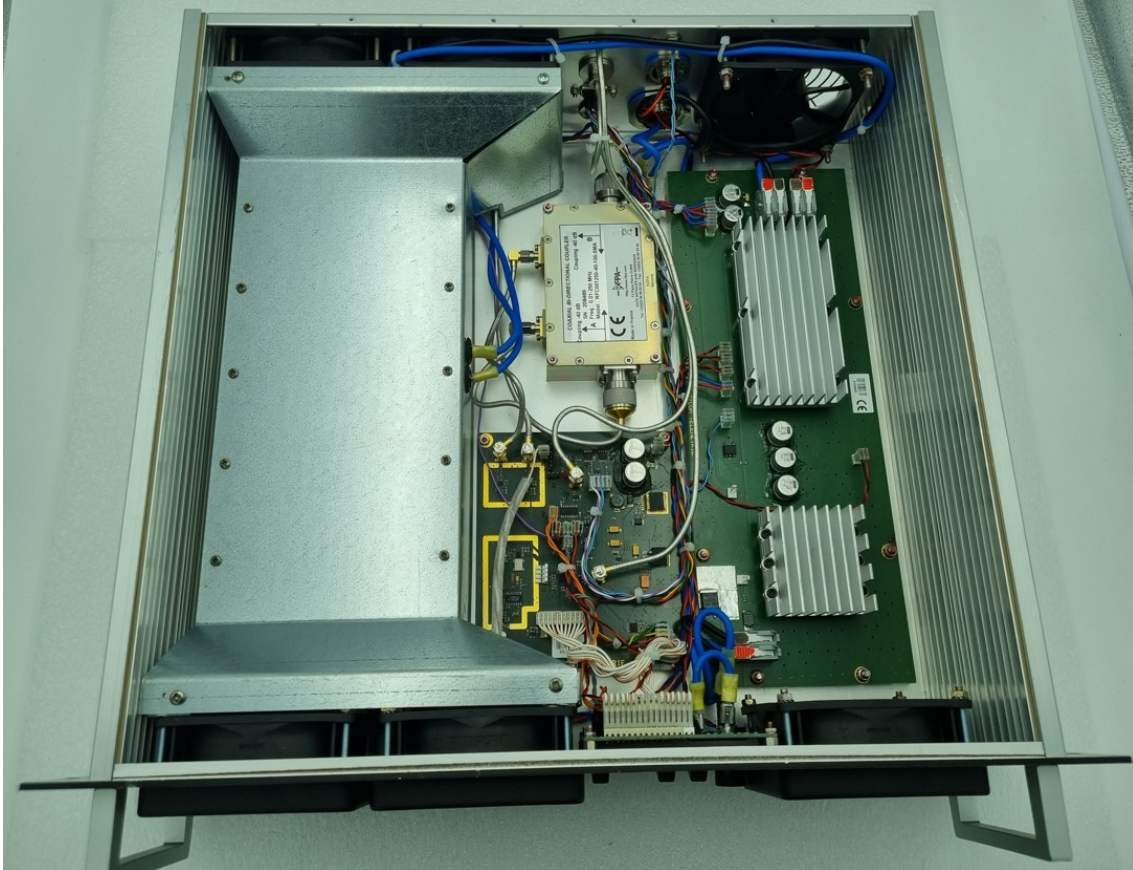


Electronic Card AT\_CRA\_ATR\_NUM Recto verso View

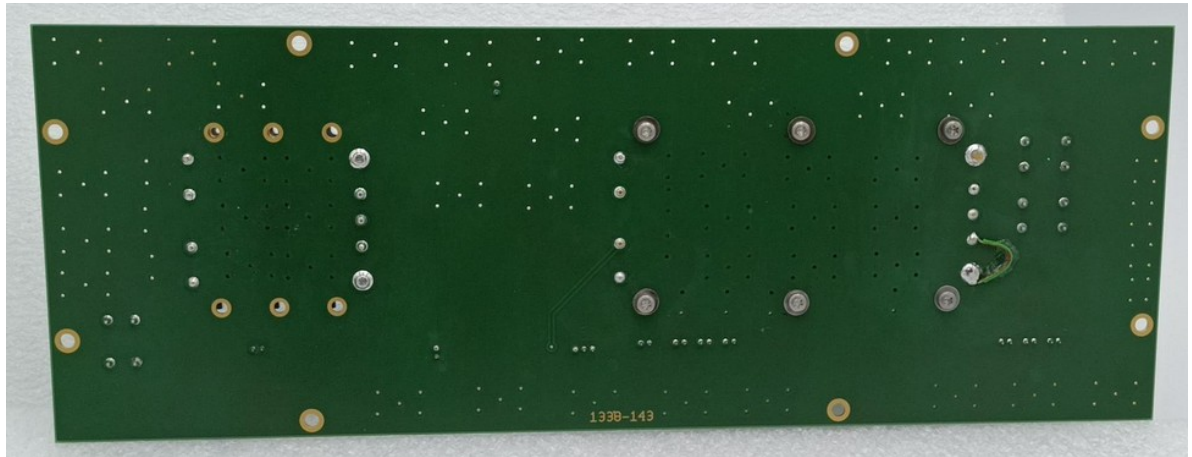
AT\_CRA

# Technical Documentation

## Internal Photos



Device AT\_CRA\_ATR\_AMP Open View

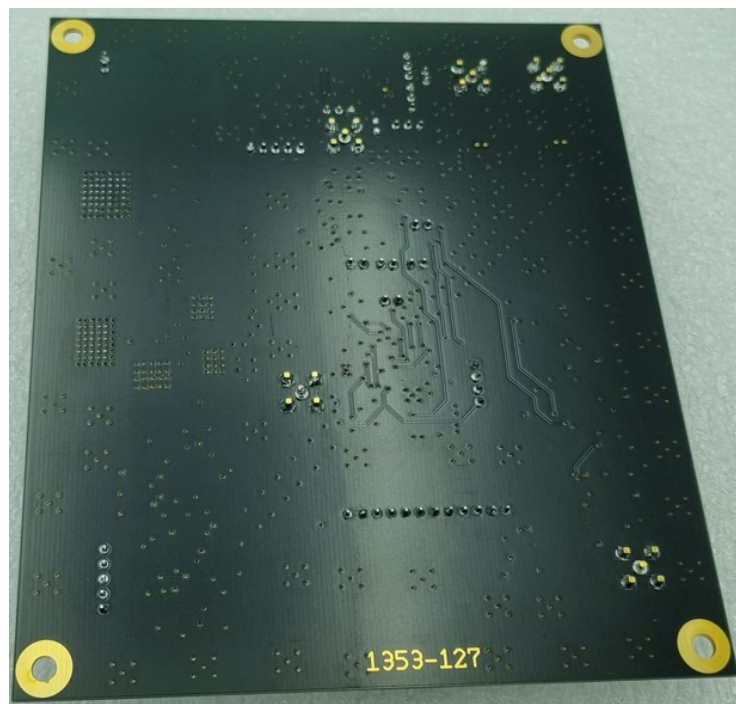


Electronic Card Recto/ Verso AT\_CRA\_ATR\_AMP View (1)

AT\_CRA

# Technical Documentation

Internal Photos

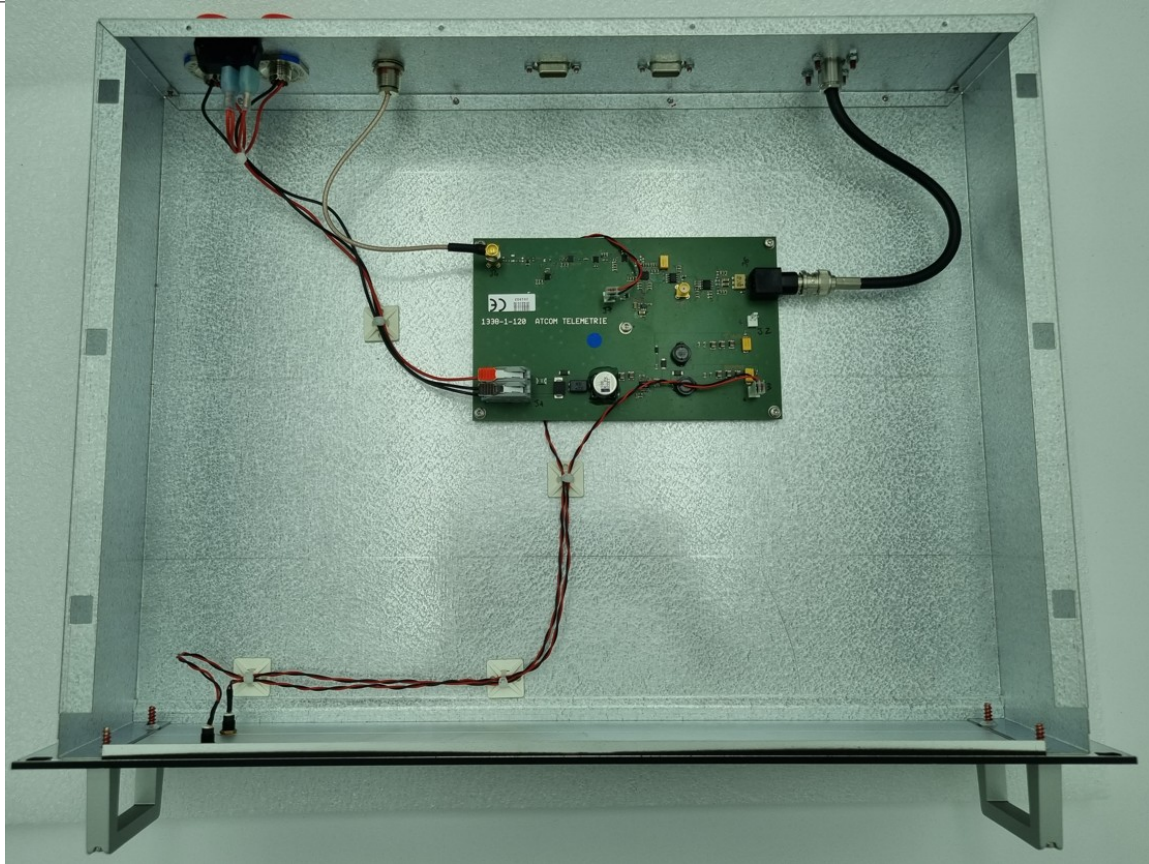


Electronic Card Recto/ Verso AT\_CRA\_ATR\_AMP View (2)

AT\_CRA

# Technical Documentation

## Internal Photos

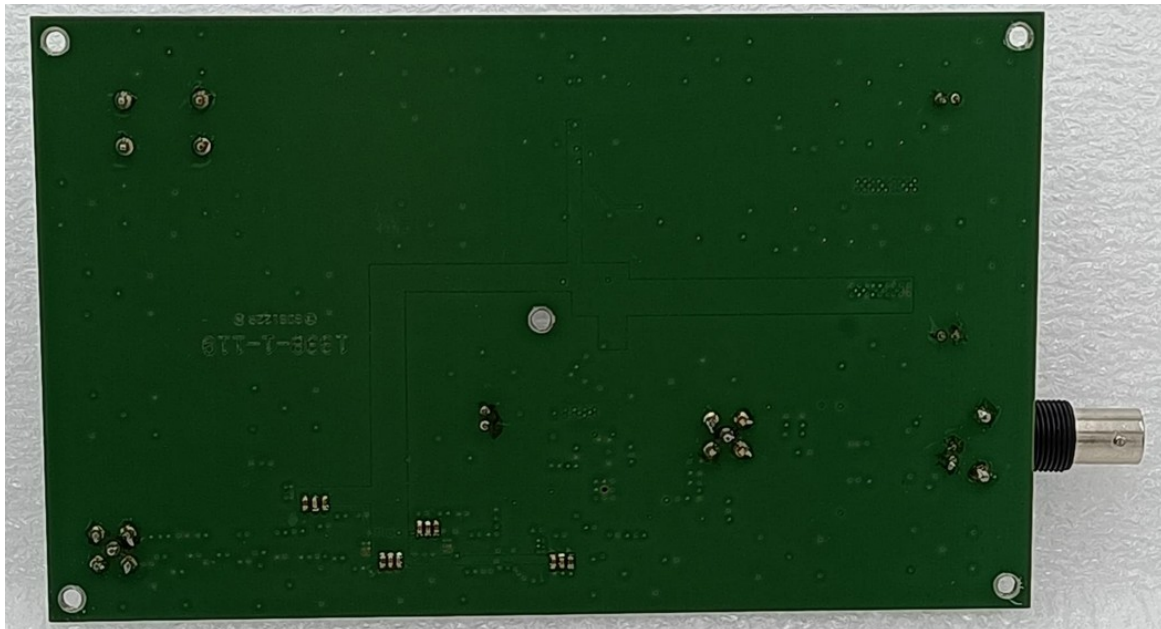


Device AT\_CRA\_ATR\_RF Open View

AT\_CRA

# Technical Documentation

Internal Photos



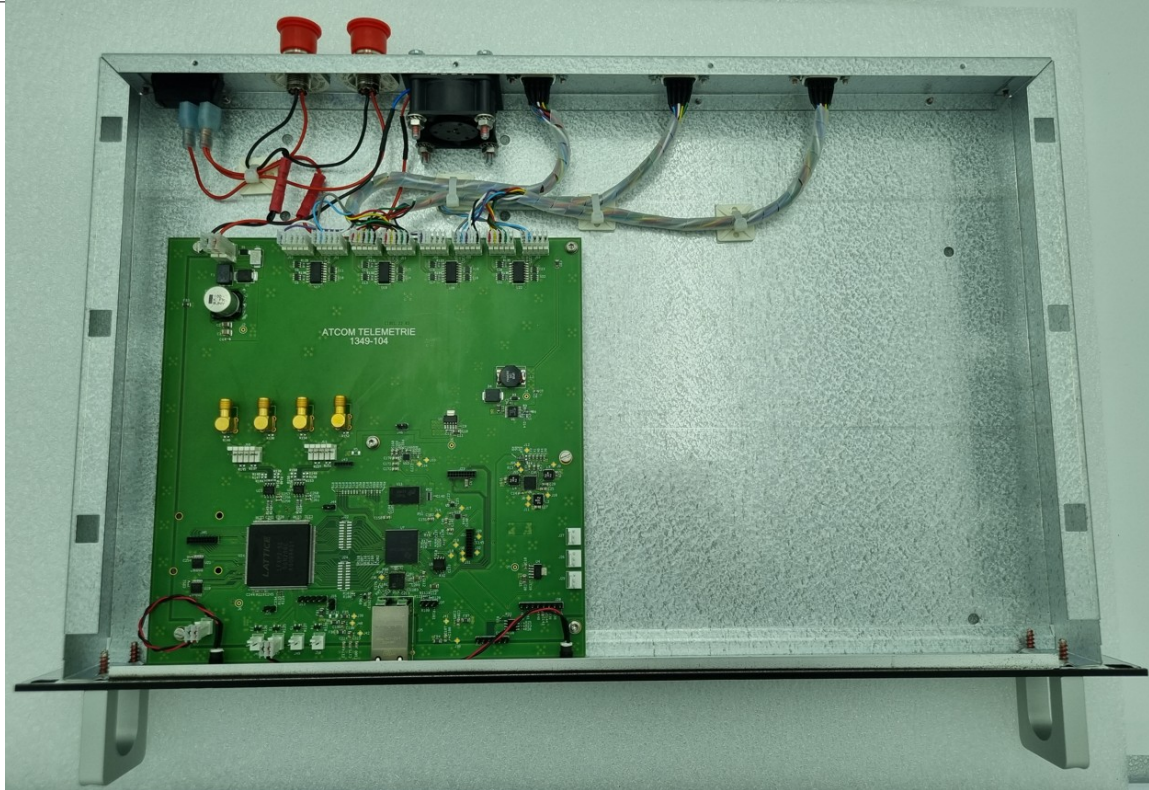
Electronic Card Recto/ Verso AT\_CRA\_ATR\_RF View



**AT\_CRA**

# Technical Documentation

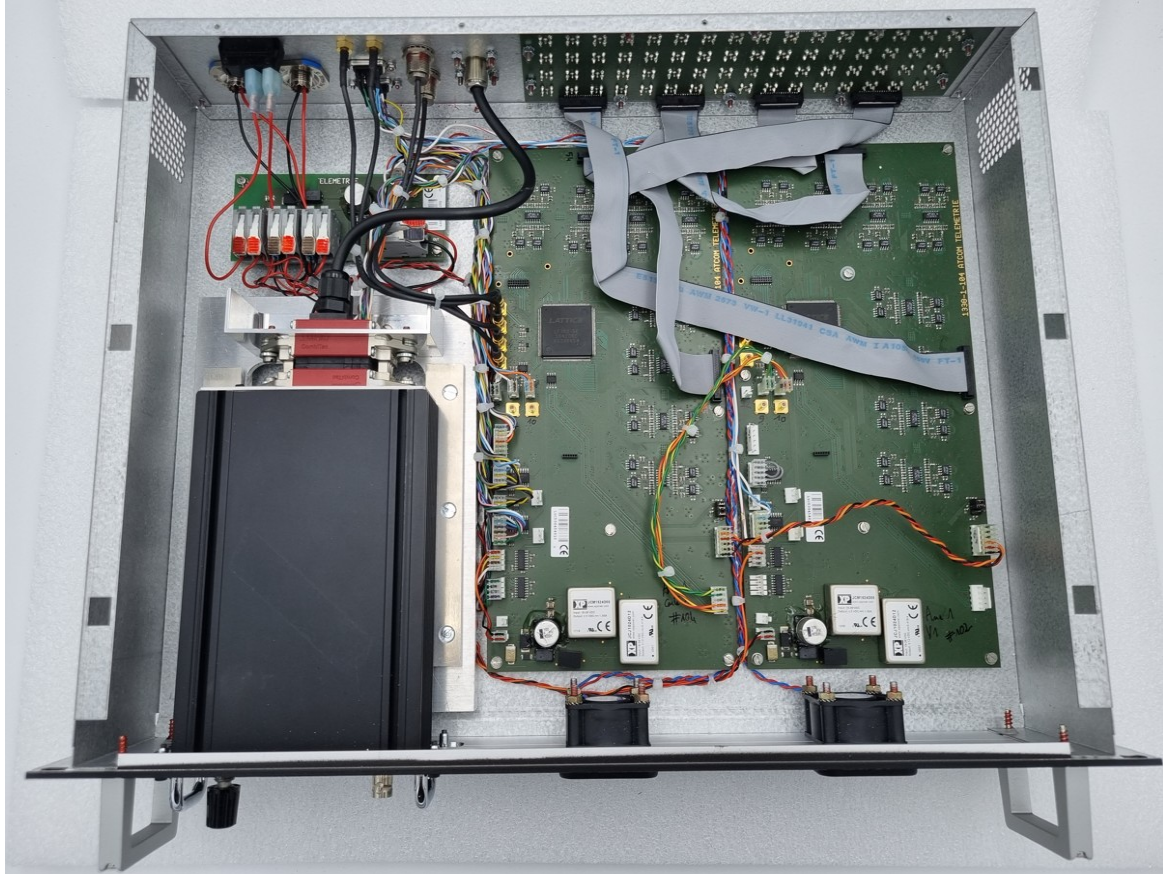
**Internal Photos**



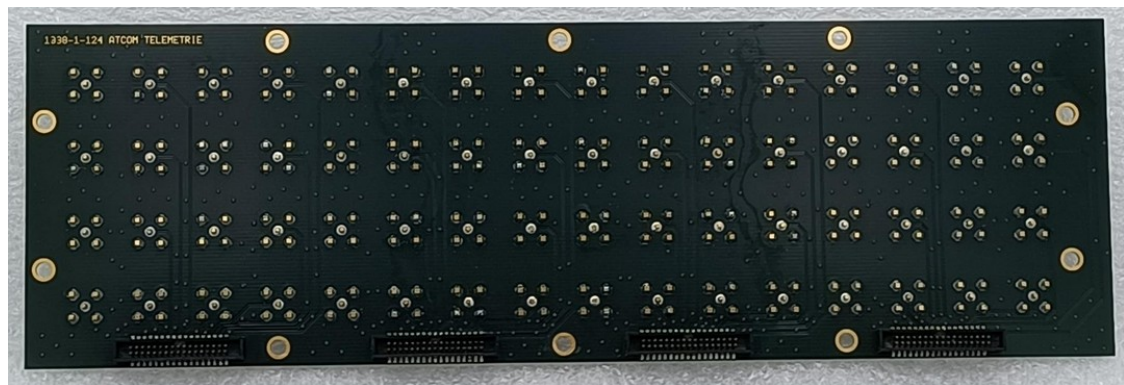
Device AT\_CRA\_ATR\_HUB Open View



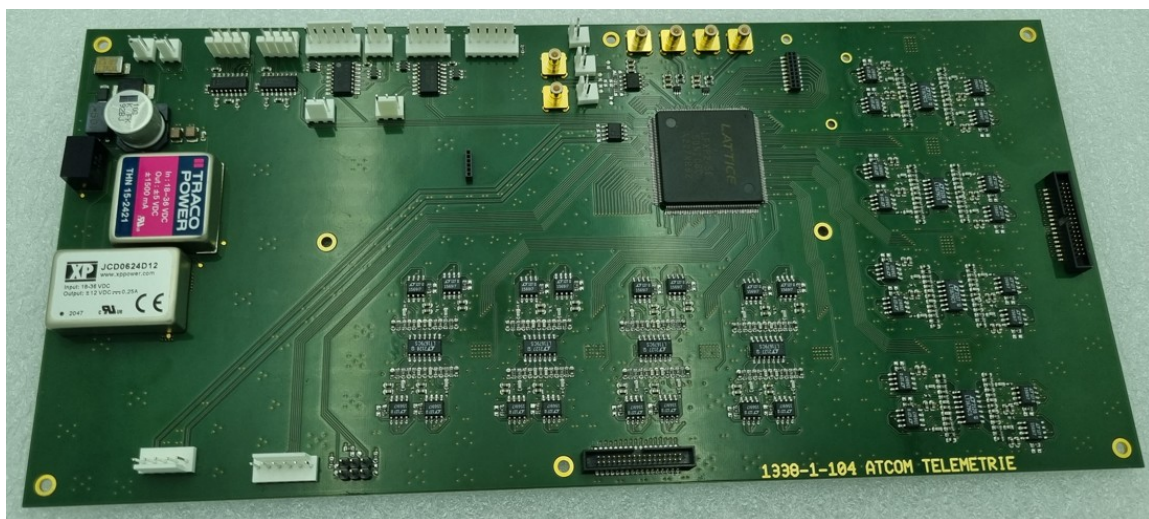
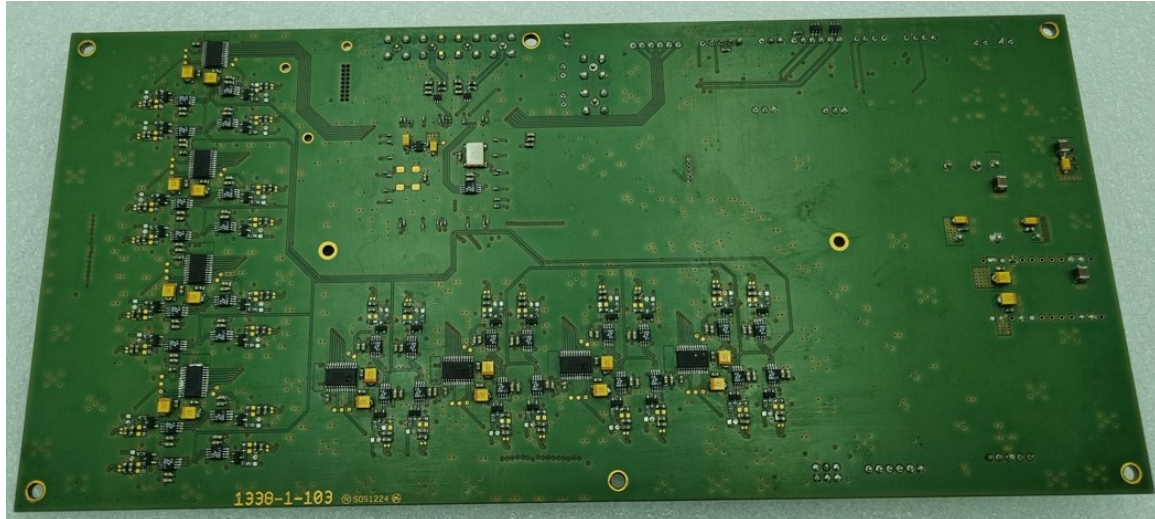
Electronic Card Recto/ Verso AT\_CRA\_ATR\_HUB View



Device AT\_CRA\_ATR\_Ana1 Open View



Electronic Card Recto/ Verso AT\_CRA\_ATR\_Ana1 View (1)

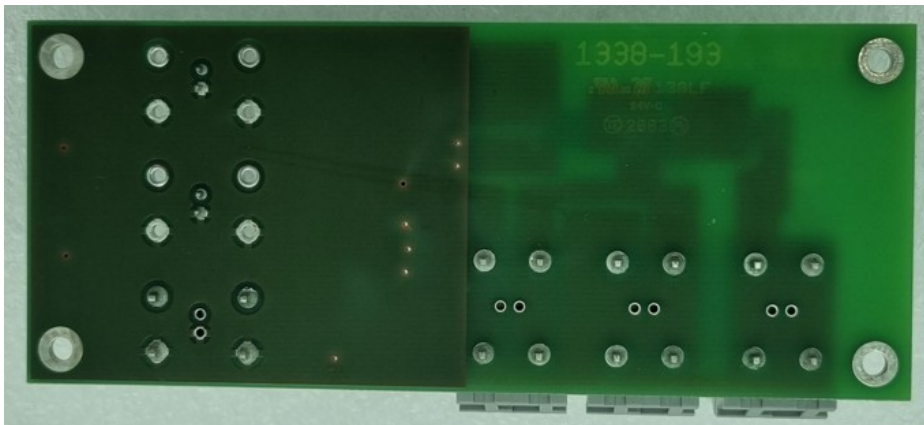


Electronic Card Recto/ Verso AT\_CRA\_ATR\_Ana1 View (2)

AT\_CRA

# Technical Documentation

Internal Photos



Device AT\_CRA\_ATR\_28V Open View (3)