

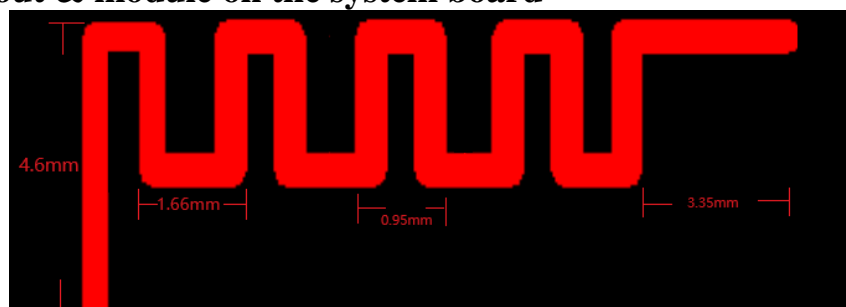
Product specification

Quick Reference Date

	Antenna module on the system board	
Frequenc Range	2400 ~ 2500MHz	
Ant. Port Input Pwr. (dBm)	0 (Typ. BT class 2 output power)	
Tot. Rad. Pwr. (dBm)	-1.2 (Input pwr – loss pwr)	
Peak EIRP(dBm)	-2	
Directivity (dBi)	1 (all direction antenna)	
Efficiency (dB)	60.2 %	
Gain (dBi)	1.3 (Peak Gain XZ-plane)	
Maximum Power (dBm)	1.7 (XY-plane)	
Minimum Power (dBm)	-4(XY-plane)	
Avg. Power (dBm)	-0.5(XY-plane)	
Input Impedence(ohm)	50	
Polarization Type	Vertical & Horizontal	
V .S .W .R	< 1.4	

All the technical data and information contained herein are subject to change without prior notice

Antenna Layout & module on the system board

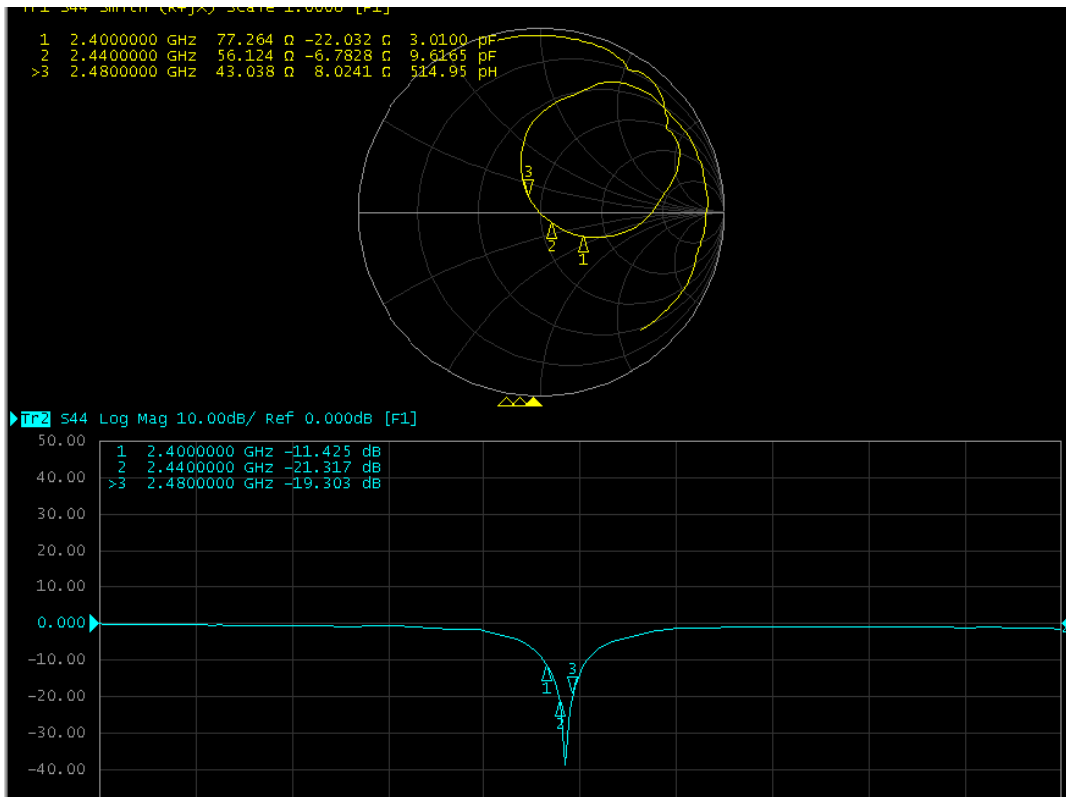


Antenna Gain

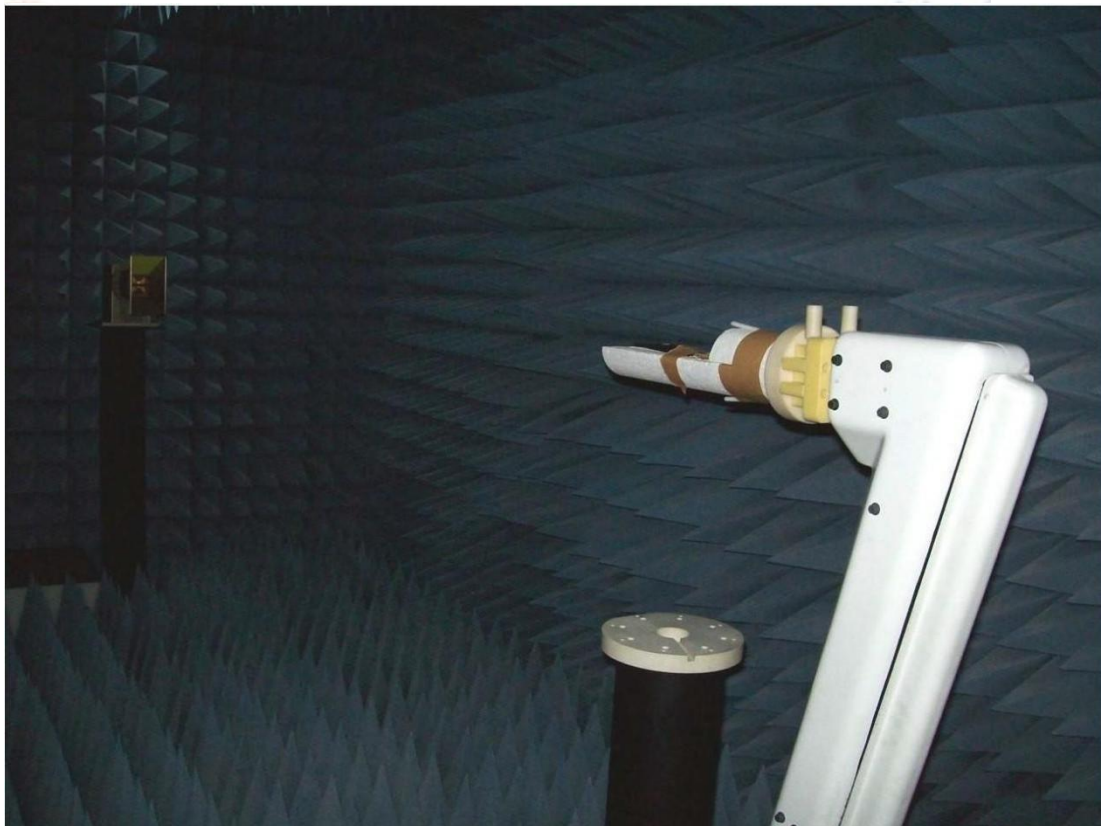
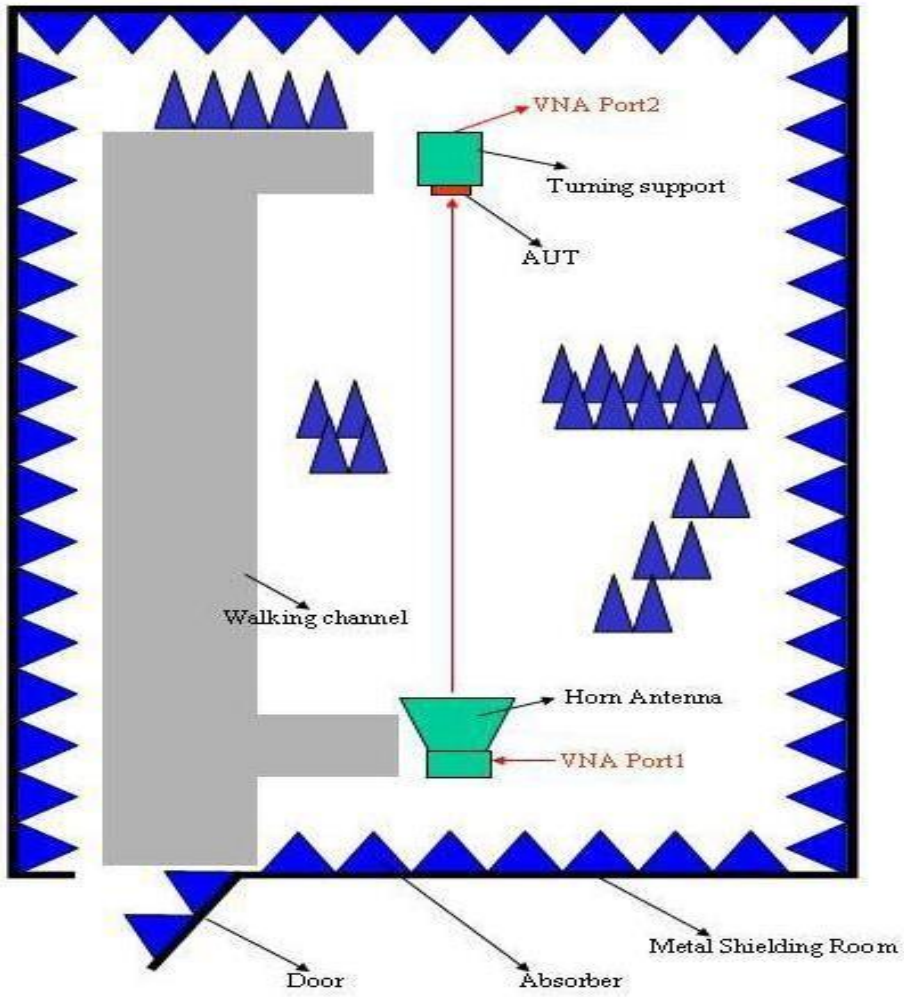
Gain Table

Unit in dBi @2.44GHz	XY-plane		XZ-plane		YZ-plane		Efficiency
	Peak	Avg.	Peak	Avg.	Peak	Avg.	
Module Board	1.3	-0.5	1.1	-3.8	1.1	-3.0	4.2 %

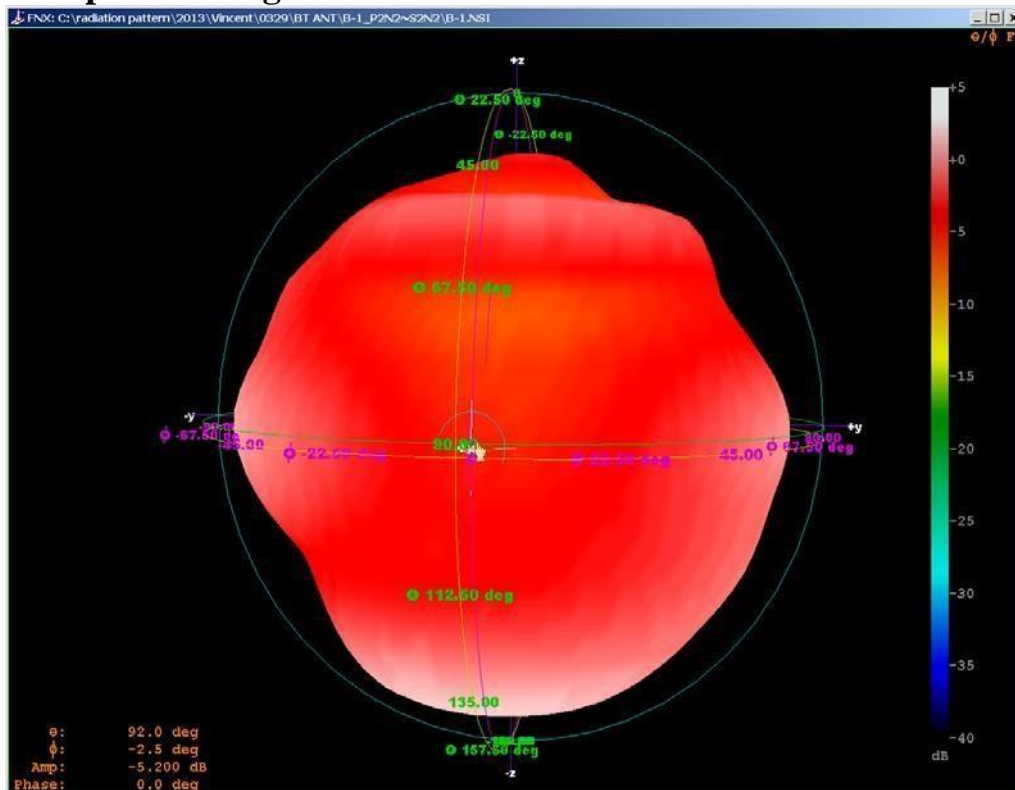
Return Loss



The Environment of Antenna Radiation Pattern



3D radiation pattern diagram



XY-plane	XZ-plane	YZ-plane
Far-field Power Distribution(H+V) on X-Y Plane Plot Peak Gain(H+V)= 1.3dBi; Plot Avg Gain(H+V)= -0.5dBi@2.4GHz	Far-field Power Distribution(H+V) on X-Z Plane Plot Peak Gain(H+V)= 1.1dBi; Plot Avg Gain(H+V)= -3.8dBi@2.4GHz	Far-field Power Distribution(H+V) on Y-Z Plane Plot Peak Gain(H+V)= 1.1dBi; Plot Avg Gain(H+V)= -3.0dBi@2.4GHz

