

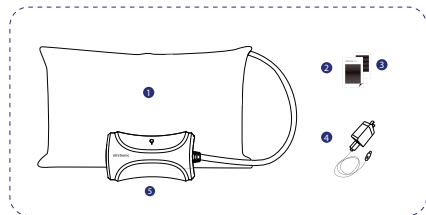
- \* Please read the user manual carefully before use, and keep this document in good condition.
- \* After unpacking, carefully check whether the accessories are complete according to the Package List.

## Product Introduction

- Thank you very much for using Nitetronic Anti-Snore Smart Pillow. Nitetronic Anti-snore Smart Pillow can help you effectively reduce snoring. After the WIFI is connected, you can view the snoring information on the APP, and adjust the pillow so that you can have a quiet and comfortable sleep experience.
- The Nitetronic anti-snoring pillow is invented in Germany and manufactured in China. We are dedicated to assist the snoring problem of people who prefer to sleep in the supine position with our artificial intelligence technologies. With our vision of "Snore Reduction = Better Sleep", We are committed to creating a healthy and undisturbed sleeping environment for all .

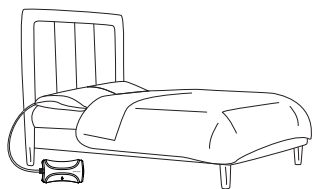
## Package List

- 1 A pillow with a pillowcase.
- 2 User manual.
- 3 Warranty card.
- 4 Power adapter.
- 5 A control-box.

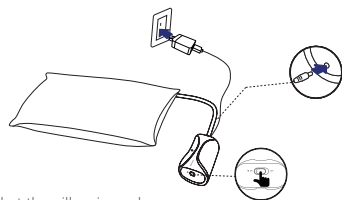


## How to Use

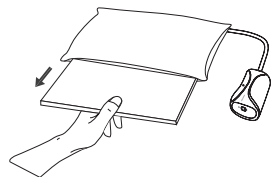
- 1 Place the Nitetronic Anti-Snore Smart Pillow on your bed.



- 2 Insert the adapter and turn on the power switch. Check that the green light is on.

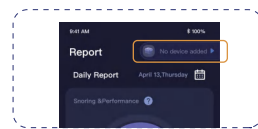


- 3 The green light indicates that the pillow is ready.
- 4 You may adjust the pillow's height by removing the cushion that comes inside the pillow.

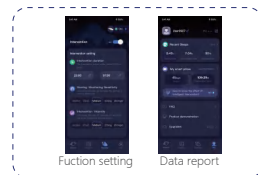
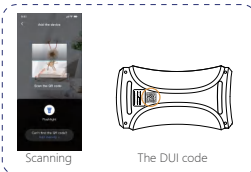


## APP Operation

- 1 Scan the QR code to download "Nitetronic" APP, or you can download from APP store.
- 2 Open "Nitetronic" APP and click the search button at the top of the front page.

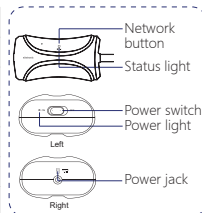


- 3 Scan the UDI code at the back of the control-box to add your product through the APP.
- 4 You can now adjust sensor level to suit your needs and view your sleep performance through the APP.



## Instruction of the light

Power light	Green on	Power on
	Green off	Power off
Status light	Blue light flashes	Network Authentication
	Blue on	Network Established
	Red on	Network Establishing
	Red light flashes	Demo mode
	Red Off	Silent Mode



Company: Shanghai Backrobo Wellness Co. Ltd.

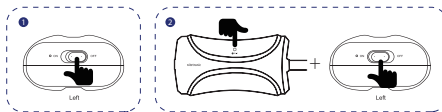
Address: Room 510, Block T6, No.311 Xinlong Road,  
Minhang District, Shanghai, China

E-mail: service.backrobo.com

Website: www.nitetronic.com.cn

## Display Mode

- In order to make it easier for you to understand the product performance, we have provided you with a display mode.
- How to start: First, turn off the power switch. Then press and hold the WIFI button until the red light is on. Finally, turn on the power switch to enter into the display mode.



## Safety Instruction

- Do not squeeze, fold or bend Nitetronic Anti-snore Smart Pillow excessively, as it may damage the sensors and the built-in air bags.
- Nitetronic Anti-snore Smart Pillow must be used with the original power adaptor. Using third party adaptor may cause damage to the device.
- The power supply should be connected to an easily accessible socket so that it can be quickly disconnected if the power connection goes out.
- Do not use the Anti-snore Smart Pillow near an electric blanket, hot water bottle or similar heating appliances, as high temperature may damage the device.
- Do not cover the power adaptor with a blanket. Do not put the power adaptor near a heat source and keep it away from direct sunlight, as overheating will cause damage to the device.
- Keep the Anti-snore Smart Pillow away from moisture, dust and corrosive gas and liquid.
- Do not use the pillow when it cannot work properly or its components may be damaged.
- Refer to the "Cleaning and Maintenance" section of this user manual to avoid dirt and bacterial contamination.

## Non-application

- Patients with intracranial electrode.
  - Patients with heart pacemaker.
- ⚠ Patients with obstructive Sleep Apnea Syndrome (OSAS) shall consult the doctor before using Nitetronic Anti-snore Smart Pillow.

## Cleaning and Maintenance

- The pillowcase is removable and it is recommended to wash according to the instructions on the washing label (inside the pillowcase).
- Please do not remove the inner protective cover to avoid damaging the sensitive technological components in the pillow. Our warranty does not cover damages caused by inappropriate uses.
- The internal pillow can not be washed or dry-cleaned. After removing the pillowcase, place the pillow in a ventilated area and gently wipe the surface of the protective inner-case with a damp cloth to remove dust or stains.

## Technical parameters

SPECIFICATIONS			
Power adapter	5 V/2A DC	Size	60x40x12cm
APPLICABLE ENVIRONMENT			
Temperature	+5°C to +45°C	Relative humidity	≤65%

### FCC Statement:

This equipment has been tested and found to comply with the limits for a Class B digital device, pursuant to Part 15 of the FCC Rules. These limits are designed to provide reasonable protection against harmful interference in a residential installation. This equipment generates uses and can radiate radio frequency energy and, if not installed and used in accordance with the instructions, may cause harmful interference to radio communications. However, there is no guarantee that interference will not occur in a particular installation. If this equipment does cause harmful interference to radio or television reception, which can be determined by turning the equipment off and on, the user is encouraged to try to correct the interference by one or more of the following measures:

- Reorient or relocate the receiving antenna.
- Increase the separation between the equipment and receiver.
- Connect the equipment into an outlet on a circuit different from that to which the receiver is connected.
- Consult the dealer or an experienced radio/TV technician for help.

This device complies with part 15 of the FCC Rules. Operation is subject to the following two conditions: (1) This device may not cause harmful interference, and (2) this device must accept any interference received, including interference that may cause undesired operation. Changes or modifications not expressly approved by the party responsible for compliance could void the user's authority to operate the equipment.

### \*RF warning for Mobile device:

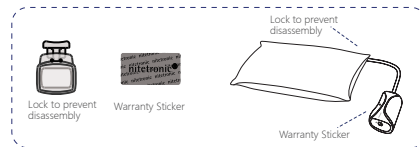
This equipment complies with FCC radiation exposure limits set forth for an uncontrolled environment. This equipment should be installed and operated with minimum distance 20cm between the radiator & your body.

## Warranty Items

- The Nitetronic Smart Anti-Snoring Pillow is covered by a one year warranty from the date of purchase. This warranty covers defects in raw materials or workmanship caused by normal use and proper maintenance.
- The warranty does not cover normal wear, tear, excessive abuse or misuse.
- The warranty period is not extended by replacement or repairing.
- It is required to provide the purchase voucher of product for warranty.
- Tips: Please keep the warranty certificate properly.

## Non-application

- Proof of purchase cannot be provided, or the date of purchase voucher is beyond the warranty period.
- The product is not used according to the specifications in the manual.
- The product has malfunction caused by intentional damage or improper.
- Operation. The part or component has been repaired or modified by people not from our company.
- The anti-remove warranty label on the pillow or the warranty label on the control box is not complete.



## Attention

- Nitetronic will carry out continuous product iterations. The specifications, features, colors, materials or appearance of the product may vary slightly, but the basic function will not be affected.

# nitetronic



Z1

Nitetronic  
User Manual