

MAXTASY



**SUCTION
MASTER+**

USER MANUAL

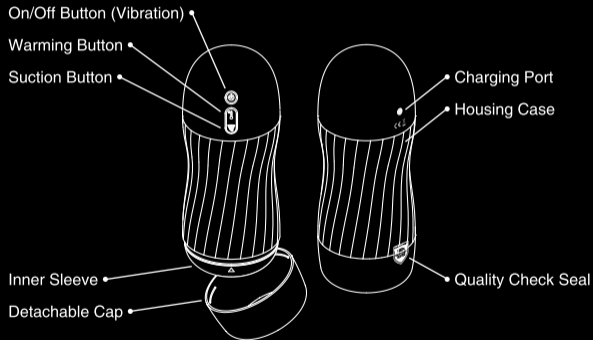
**THREE OF THE WORLD'S
MOST PLEASURABLE SENSATIONS
IN ONE STROKER**

#engineered4pleasure

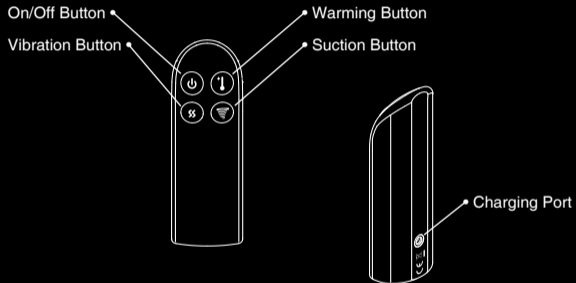
Congratulations on your purchase of Suction Master+, the world's most elite pleasure stroker equipped with an unique technology which combines three most pleasurable sensations – suction, vibration and warming.

Please take a moment to read through this user manual before using the stroker.

YOUR SUCTION MASTER+



REMOTE CONTROL

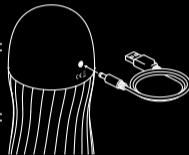


CHARGING

Make sure to charge your SUCTION MASTER+ together with the remote before the first use.

Charging time
Suction Master+:
180min

Running time
Suction Master+:
120min



Charging time
Remote:
60min

Running time
Remote:
12hrs



In case the battery is getting low, the LED around button area starts flashing fast. Insert the DC plug into the DC port.

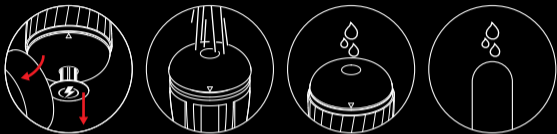
LED will start flashing slowly indicating charging.

Once fully charged LED stops flashing.

Charge at least once every 6 months to protect and extend battery lifetime.

IMPORTANT: Use only original USB charging cable provided with your MAXTASY product. USB adapter must not have higher charging current than 1A (one amper).

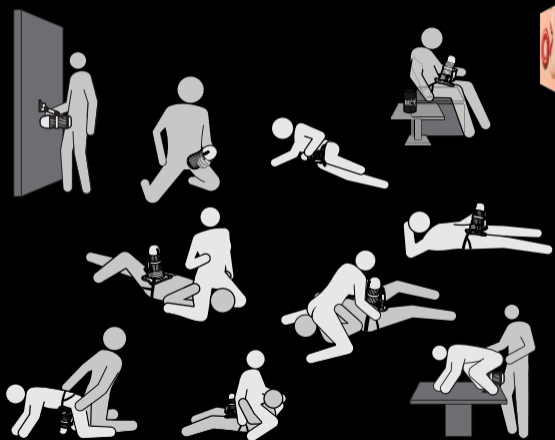
HOW TO USE



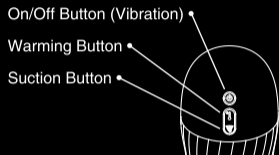
1. Remove the cap and the sleeve inner support
2. Wash the inner sleeve in warm soapy water before the first use
3. Lube up inner sleeve
4. Lube up your penis
5. Insert penis
6. Enjoy
7. Clean immediately after use, following cleaning instructions

IMPORTANT: For the most pleasurable sensation, always apply a generous amount, at least 15ml/0.5oz, of water-based lubricant to the penis and the inner side of the sleeve prior to use.

POSITION GUIDE



BUTTONS' CONTROL WITHOUT THE REMOTE



- Press and hold On/Off Button until it lights up = product in stand-by mode
- Press On/Off Button shortly = vibration mode 1 turns on
- Press On/Off Button again = move between vibration modes (total of 10 vibration modes)
- Press Suction Button shortly once = suction mode 1 turns on
- Press Suction Button shortly again = move between suction modes (total of 10 suction modes)
- Press and hold Suction Button = suction function turns off
- Press Warming Button once = warming is activated and red light turns on
- Press Warming Button shortly again = heating is de-activated and red light turns off
- Press and hold On/Off Button = all functions turn off and light turns off

TIP: For more details visit www.maxtasy.com/howtouse

BUTTONS' CONTROL WITH THE REMOTE

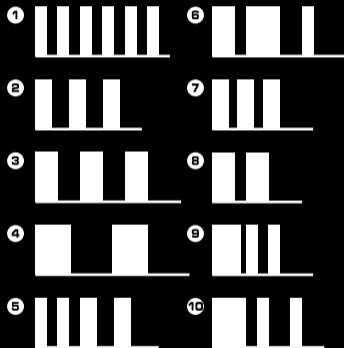


- Press and hold On/Off Button on the main unit until it lights up = product is stand-by mode
- Press and hold On/Off Button on the remote until it lights up = remote control is activated
- Press Suction Button on the remote shortly once = suction mode 1 turns on
- Press Suction Button on the remote shortly again = move between suction modes (total of 10 suction modes)
- Press and hold Suction Button on the remote = suction function turns off
- Press Vibration Button on the remote shortly once = vibration mode 1 turns on
- Press Vibration Button on the remote shortly again = move between vibration modes (total of 10 vibration modes)
- Press and hold Vibration Button on the remote = vibration function turns off
- Press Warming Button on the remote once = warming is activated and red light turns on
- Press Warming Button on the remote again = warming is de-activated and red light turns off
- Press On/Off Button on the remote shortly anytime = all functions turn off
- Press and hold On/Off Button on the remote = remote control is de-activated and light turns off

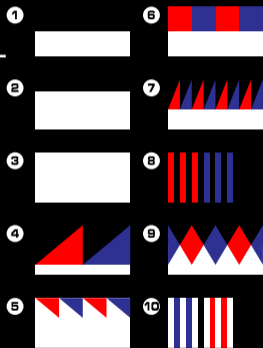
TIP: The remote-control range is 5meters

MODE DIAGRAMS

Suction modes



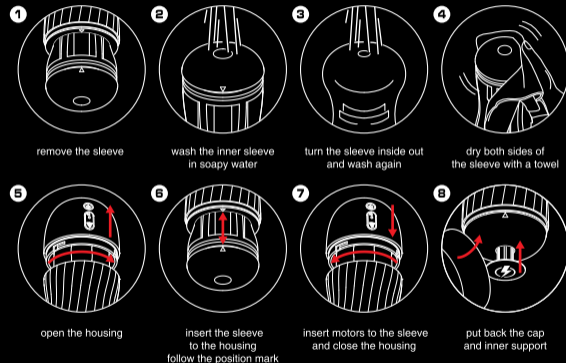
Vibration modes



= Left & right motor
 = Right motor
 = Left motor

CLEANING

Wash the inner sleeve in soapy water before and after every use, including the first.



Clean the outer case with a damp cloth or tissue and dry after use.

IMPORTANT: Never let water come inside the main housing case.

TIP: For more details visit www.maxtasy.com/cleaning

THE WORLD OF MAXTASY

**SUCTION
MASTER**



**STROKE
MASTER**



**VIBRATION
MASTER**



**SUCTION
MOUNT**



**STRAP
ON**



**WARMING &
DRYING DOCK**

WWW.MAXTASY.COM

TROUBLESHOOTING

| | |
|---|--|
| Product does not turn on | Charge the product fully |
| | Disconnect the charging cable |
| | Turn on the product with On/Off Button |
| Product is not charging/light is not flashing | Plug the DC cable in the DC port on your toy |
| | Plug the USB cable in the USB adaptor |
| Suction is weak | Ensure the sleeve is inserted correctly |
| Vibration is weak | Ensure the sleeve is inserted correctly |
| LED is flashing but product works | Low battery indicator, charge the product fully |
| Remote does not work | Make sure the main unit as well as the remote are in stand-by mode, both On/Off buttons are light up |
| | Read BUTTON'S CONTROL WITH THE REMOTE |

SPECIFICATION

| | |
|--------------------------------|---|
| Material: | Housing and buttons ABS, inner sleeve TPE |
| Dimensions: | Height 10" (255mm) Outer Diameter 3" (85mm) Insertable depth 5½" (141mm standard version) Insertable depth 5¾" (147mm realistic version) |
| Weight: | 670 g (Standard version) 700 g (Realistic version) |
| Battery: | Li-Ion 2600 mAh 3.7V |
| Noise Level: | < 45dB |
| Warming - max temp: | 98°F (36°C) |
| Charging Time Suction Master+: | 180min |
| Running Time Suction Master+: | 120min |
| Charging Time Remote: | 60min |
| Running Time Remote: | 12hr |
| Remote Range: | 5meters |
| Remote Frequency: | 433MHz |

WARRANTY

Your product is covered by one year warranty valid from the date of purchase.

Please note the warranty is rendered void if:

- 1) Quality Checked Seal was removed
- 2) There is no valid proof of purchase
- 3) The damage was caused by dropping, stepping on or any other accidental damage after purchase
- 4) The product was modified or dismantled
- 5) The outer housing case was submerged in liquid

For detailed warranty policy and/or to make a claim

visit www.maxtasy.com/warranty

SAFETY & WARNINGS

Keep away from direct sunlight and humidity.

Those who use a pacemaker and/or have diabetes, phlebitis, thrombosis or any other health conditions, should consult with a medical professional regarding the risk of blood clots before using the product.

If you notice any visible damage, turn the product off and stop using it immediately.

Do not share the product with others.

This is an adult novelty product and children should not play with it.

This product is for novelty use only. The manufacturer holds no liability.

Do not use alcohol-, acid- or alkali-based cleaners. Always clean the inner sleeve with warm soapy water and the outer housing case with a damp cloth or tissue.

Ensure that the inner sleeve is fully dry before installing it back in the outer housing case. Do not allow water inside the outer housing case.

IMPORTANT: If you feel any discomfort when using the product, turn the product off and stop using it immediately. Contact a medical professional.

Designed and developed in California U.S.A.

Manufactured for Maxtasy in China

FCC ID 2A84DMAXSUCPLUS

Patented DE file number 20 2021 105 754.8

WEBSITE: www.maxtasy.com

SUPPORT: support@maxtasy.com



FCC Warning

This device complies with part 15 of the FCC Rules. Operation is subject to the following two conditions:

- (1) This device may not cause harmful interference, and
- (2) this device must accept any interference received, including interference that may cause undesired operation.

Any Changes or modifications not expressly approved by the party responsible for compliance could void the user's authority to operate the equipment.

Note: This equipment has been tested and found to comply with the limits for a Class B digital device, pursuant to part 15 of the FCC Rules. These limits are designed to provide reasonable protection against harmful interference in a residential installation. This equipment generates uses and can radiate radio frequency energy and, if not installed and used in accordance with the instructions, may cause harmful interference to radio communications. However, there is no guarantee that interference will not occur in a particular installation. If this equipment does cause harmful interference to radio or television reception, which can be determined by turning the equipment off and on, the user is encouraged to try to correct the interference by one or more of the following measures:

- Reorient or relocate the receiving antenna.
- Increase the separation between the equipment and receiver.
- Connect the equipment into an outlet on a circuit different from that to which the receiver is connected.
- Consult the dealer or an experienced radio/TV technician for help.

The device has been evaluated to meet general RF exposure requirement. The device can be used in portable exposure condition without restriction.