

MAXTASY



**STROKE
MASTER+**

USER MANUAL

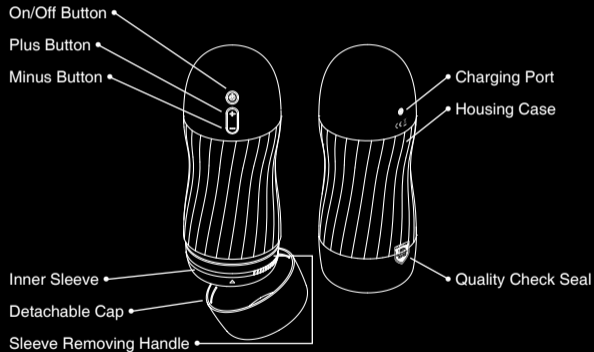
**THE MOST REALISTIC
LIFE-LIKE PENETRATION
EXPERIENCE STROKER**

#engineered4pleasure

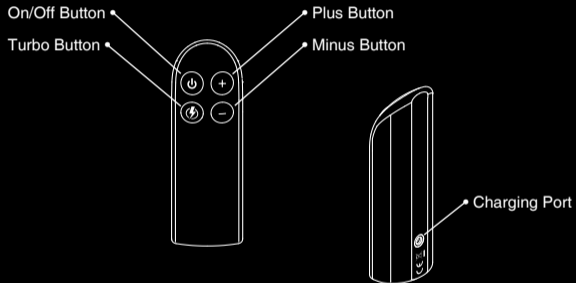
Congratulations on your purchase of Stroke Master+, the world's elite pleasure stroker equipped with hyper powerful motor offering almost unlimited torque and unparallel stroke depth.

Please take a moment to read through this user manual before using the stroker.

YOUR STROKE MASTER+



REMOTE CONTROL

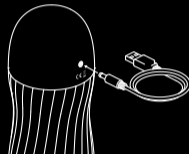


CHARGING

Make sure to charge your STROKE MASTER+ together with the remote before the first use.

Charing time
Stroke Master+:
120min

Running time
Stroke Master+:
120min



Charing time
Remote:
60min

Running time
Remote:
12hrs



In case the battery is getting low, the LED around button area starts flashing fast. Insert the DC plug into the DC port.

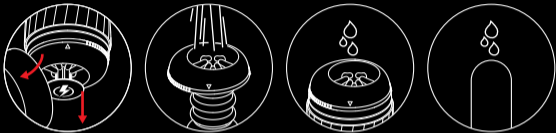
LED will start flashing slowly indicating charging.

Once fully charged LED stops flashing.

Charge at least once every 6 months to protect and extend battery lifetime.

IMPORTANT: Use only original USB charging cable provided with your MAXTASY product. USB adapter must not have higher charging current than 1A (one amper).

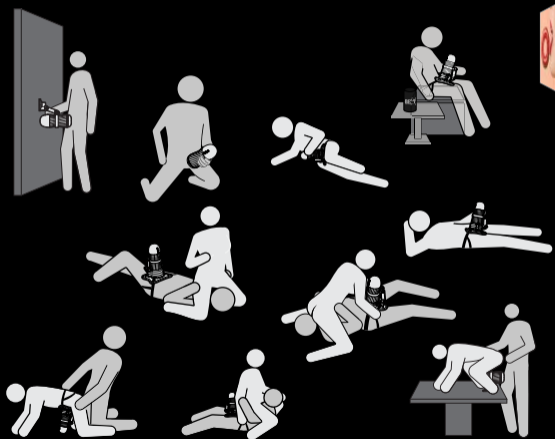
HOW TO USE



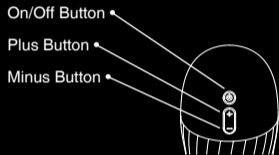
1. Remove the cap and the sleeve inner support
2. Wash the inner sleeve in warm soapy water before the first use
3. Lube up inner sleeve
4. Lube up your penis
5. Insert penis
6. Enjoy
7. Clean immediately after use, following cleaning instructions

IMPORTANT: For the most pleasurable sensation, always apply a generous amount, at least 15ml/0.5oz, of water-based lubricant to the penis and the inner side of the sleeve prior to use.

POSITION GUIDE



BUTTONS' CONTROL WITHOUT THE REMOTE



- Press and hold On/Off Button until it lights up = product in stand-by mode
- Press On/Off Button shortly = stroking starts
- Press Plus Button shortly once = stroking speed increases (total of 10 stroking speed levels)
- Press Minus Button shortly once = stroking speed decreases
- Press and hold On/Off Button = stroking stops and light turns off

TIP: For more details visit www.maxtasy.com/howtouse

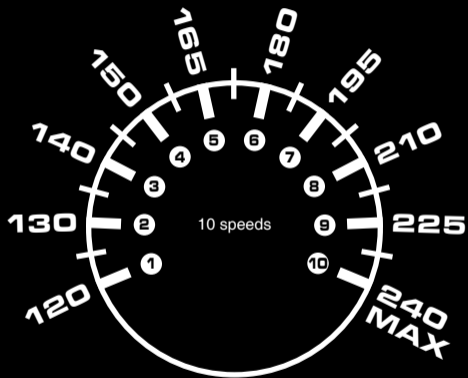
BUTTONS' CONTROL WITH THE REMOTE



- Press and hold On/Off Button on the main unit until it lights up = product is stand-by mode
- Press and hold On/Off Button on the remote until it lights up = remote control is activated
- Press On/Off Button or Plus Button on the remote = stroking starts
- Press Plus Button on the remote shortly once = stroking speed increases (total of 10 stroking speed levels)
- Press Minus Button on the remote shortly once = stroking speed decreases
- Press Turbo Button on the remote shortly once = stroking speed increases to the maximum level
- Press On/Off Button on the remote shortly = stroking stops
- Press and hold On/Off Button on the remote = remote control is de-activated and light turns off

TIP: The remote-control range is 5meters

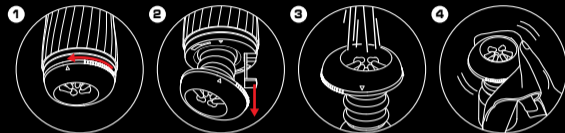
STROKING SPEEDS



Strokes per minute

CLEANING

Wash the inner sleeve in soapy water before and after every use, including the first.

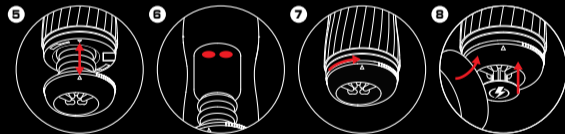


twist the sleeve to release it

remove the sleeve
with handle

wash the inner sleeve
in soapy water

dry the sleeve with a towel



insert the sleeve back,
follow the position mark

magnets on the sleeve bottom
connect to the inner housing

twist the sleeve to fix it

put back the cap
and inner support

Clean the outer case with a damp cloth or tissue and dry after use.

IMPORTANT: Never let water come inside the main housing case.

TIP: For more details visit www.maxtasy.com/cleaning

THE WORLD OF MAXTASY

**SUCTION
MASTER**



**STROKE
MASTER**



**VIBRATION
MASTER**



**SUCTION
MOUNT**



**STRAP
ON**



**WARMING &
DRYING DOCK**

WWW.MAXTASY.COM

TROUBLESHOOTING

Product does not turn on	Charge the product fully
	Disconnect the charging cable
	Turn on the product with On/Off Button
Product is not charging/light is not flashing	Plug the DC cable in the DC port on your toy
	Plug the USB cable in the USB adaptor
Stroking is noisy	Ensure the sleeve is inserted correctly
LED is flashing but product works	Low battery indicator, charge the product fully
Remote does not work	Make sure the main unit as well as the remote are in stand-by mode, both On/Off buttons are light up
	Read BUTTON'S CONTROL WITH THE REMOTE

SPECIFICATION

Material:	Housing and buttons ABS, inner sleeve TPE
Dimensions:	Height 10" (255mm) Outer Diameter 3" (85mm) Max insertable depth 5" (128mm standard version) Max insertable depth 4¾" (124mm realistic version)
Weight:	600 g (Standard version) 600 g (Realistic version)
Battery:	Li-Ion 1800 mAh 3.7V
Noise Level:	< 45dB
Charging Time Stroke Master+:	120min
Running Time Stroke Master+:	120min
Charging Time Remote:	60min
Running Time Remote:	12hr
Remote Range:	5meters
Remote Frequency:	433MHz

WARRANTY

Your product is covered by one year warranty valid from the date of purchase.

Please note the warranty is rendered void if:

- 1) Quality Checked Seal was removed
- 2) There is no valid proof of purchase
- 3) The damage was caused by dropping, stepping on or any other accidental damage after purchase
- 4) The product was modified or dismantled
- 5) The outer housing case was submerged in liquid

For detailed warranty policy and/or to make a claim

visit www.maxtasy.com/warranty

SAFETY & WARNINGS

Keep away from direct sunlight and humidity.

Those who use a pacemaker and/or have diabetes, phlebitis, thrombosis or any other health conditions, should consult with a medical professional regarding the risk of blood clots before using the product.

If you notice any visible damage, turn the product off and stop using it immediately.

Do not share the product with others.

This is an adult novelty product and children should not play with it.

This product is for novelty use only. The manufacturer holds no liability.

Do not use alcohol-, acid- or alkali-based cleaners. Always clean the inner sleeve with warm soapy water and the outer housing case with a damp cloth or tissue.

Ensure that the inner sleeve is fully dry before installing it back in the outer housing case. Do not allow water inside the outer housing case.

IMPORTANT: If you feel any discomfort when using the product, turn the product off and stop using it immediately. Contact a medical professional.

Designed and developed in California U.S.A.

Manufactured for Maxtasy in China

FCC ID 2A84DMAXSTRPLUS

Patented DE file number 20 2021 105 756.4

WEBSITE: www.maxtasy.com

SUPPORT: support@maxtasy.com



FCC Caution.

This device complies with part 15 of the FCC Rules. Operation is subject to the following two conditions:

- (1) This device may not cause harmful interference, and
- (2) this device must accept any interference received, including interference that may cause undesired operation.

Any Changes or modifications not expressly approved by the party responsible for compliance could void the user's authority to operate the equipment.

Note: This equipment has been tested and found to comply with the limits for a Class B digital device, pursuant to part 15 of the FCC Rules. These limits are designed to provide reasonable protection against harmful interference in a residential installation. This equipment generates uses and can radiate radio frequency energy and, if not installed and used in accordance with the instructions, may cause harmful interference to radio communications. However, there is no guarantee that interference will not occur in a particular installation. If this equipment does cause harmful interference to radio or television reception, which can be determined by turning the equipment off and on, the user is encouraged to try to correct the interference by one or more of the following measures:

- Reorient or relocate the receiving antenna.
- Increase the separation between the equipment and receiver.
- Connect the equipment into an outlet on a circuit different from that to which the receiver is connected.
- Consult the dealer or an experienced radio/TV technician for help.

The device has been evaluated to meet general RF exposure requirement. The device can be used in portable exposure condition without restriction.