

HOOPOSENSE

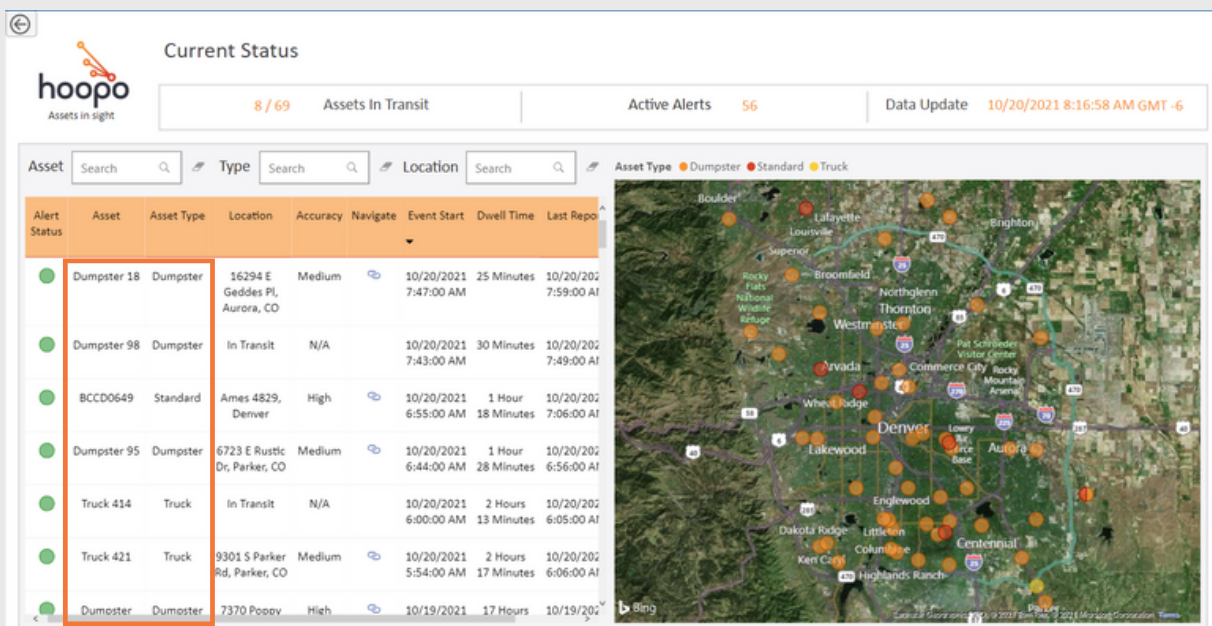
INSTALLATION MANUAL

11.

ASSOCIATION TOOL

The association tool enables you to set the name and type of your asset, so they will appear on the hoopoDashboard instead of the hoopoSense tracker's serial number.

FIGURE 19: HOOPDASHBOARD - ASSET NAME AND TYPE



11.1. Enter the association tool via mobile or desktop by clicking this link : app.hoopo.tech

HOOPOSENSE

INSTALLATION MANUAL



Asset Association Tool

Username

Password

FIGURE 20: ASSOCIATION TOOL - LOGIN PAGE



Asset Association Tool

Hoopo Device ID

Asset Name

Asset Type

FIGURE 21: ASSOCIATION TOOL - INSERT DETAILS

- 11.2. Log in with the username and password you've received from the hoopo team.
- 11.3. Find the hoopoSense tracker by typing its serial number in the 'DeviceID' tab
- 11.4. Type the 'Asset Name' on which this tracker is installed
- 11.5. Choose the 'Asset Type' of this asset, if relevant.
- 11.6. Click submit.
- 11.7. If the details were updated successfully, you'll see a success message.
 - Note: if you don't see the success message, verify the details and your internet connection, and try again.
- 11.8. View the changes in the hoopoDashboard
 - Note: it may take a few minutes, you can refresh the page by clicking the refresh button.

12.**RADIO COMPLIANCE STATEMENT****FCC ID: 2A7ZU-S02****Contains FCC ID: XMR201910BG95M3****Contains FCC ID: 2AC7Z-ESP32WRWOM32E****IC: 28836-S02, HVIN: S02****Contains IC: 10224A-201910BG95M3****CAN ICES-003 (B)/ NMB-3 (B)****The FCC Wants You to Know**

This equipment has been tested and found to comply with the limits for a Class B digital device, pursuant to Part 15 of the FCC rules. These limits are designed to provide reasonable protection against harmful interference in a residential installation. This equipment generates, uses and can radiate radio frequency energy and, if not installed and used in accordance with the instructions, may cause harmful interference to radio communications. However, there is no guarantee that interference will not occur in a particular installation. If this equipment does cause harmful interference to radio or television reception, which can be determined by turning the equipment off and on, the user is encouraged to try to correct the interference by one or more of the following measures:

- a) Reorient or relocate the receiving antenna.
- b) Increase the separation between the equipment and receiver.
- c) Connect the equipment to an outlet on a circuit different from that to which the receiver is connected.
- d) Consult the dealer or an experienced radio/TV technician.

CAN ICES-3 (B) / NMB-3 (B)

This Class B digital apparatus complies with Canadian ICES-003.
Cet appareil numérique de classe B est conforme à la norme canadienne ICES-003.

FCC Warning (Modification statement)

Hoopo has not approved any changes or modifications to this device by the user. Any changes or modifications could void the user's authority to operate the equipment.

ISED Warning (Modification statement)

Hoopo n'approuve aucune modification apportée à l'appareil par l'utilisateur, quelle qu'en soit la nature. Tout changement ou modification peut annuler le droit d'utilisation de l'appareil par l'utilisateur.

Interference statement

This device complies with Part 15 of the FCC Rules and Industry Canada licence-exempt RSS standard(s). Operation is subject to the following two conditions: (1) this device may not cause interference, and (2) this device must accept any interference, including interference that may cause undesired operation of the device.

Le présent appareil est conforme aux CNR d'Industrie Canada applicables aux appareils radio exempts de licence. L'exploitation est autorisée aux deux conditions suivantes : (1) l'appareil ne doit pas produire de brouillage, et (2) l'utilisateur de l'appareil doit accepter tout brouillage radioélectrique subi, même si le brouillage est susceptible d'en compromettre le fonctionnement.

Wireless notice

This device complies with FCC/ISED radiation exposure limits set forth for an uncontrolled environment and meets the FCC radio frequency (RF) Exposure Guidelines and RSS-102 of the ISED radio frequency (RF) Exposure rules. This transmitter must not be co-located or operating in conjunction with any other antenna or transmitter.

Le présent appareil est conforme aux radiations FCC / ISED définies pour un environnement non contrôlé et répond aux directives d'exposition de la fréquence de la FCC radiofréquence (RF) et RSS-102 de la fréquence radio (RF) ISED règles d'exposition. L'émetteur ne doit pas être colocalisé ni fonctionner conjointement avec à autre antenne ou autre émetteur.

RF Exposure

This device is only authorized for use in a mobile application. At least 20 cm of separation distance between the hoopoSense device and the user's body must be maintained at all times.

HOOPOSENSE

INSTALLATION MANUAL

APPENDIX A

HOOPOSENSE TRACKER ONLY

1 ea. hoopSense	p/n 502G1000-1A
4 ea. pan head phillips screws PT	p/n 340Q4907-AA (if not attached to unit)
1 ea. installation label	p/n 350C1000-1A
2 ea. pan head phillips drilling screws	p/n 340Q5121-1A
2 ea. washers	p/n 342B0842-AA

HOOPOSENSE WITH PROTECTIVE COVER

1 ea. hoopSense	p/n 502G1000-1A
4 ea. pan head phillips screws PT	p/n 340Q4907-AA (if not attached to unit)
1 ea. protective cover	p/n 360B1000-1A
1 ea. installation label	p/n 350C2000-1A
1 ea. stick-on cushion	p/n 405N2130-1A
2 ea. hexagon head drilling screws	p/n 340C6121-1A
2 ea. washers	p/n 342B1636-AA

HOOPOSENSE

INSTALLATION MANUAL

APPENDIX B

PROTECTIVE COVER DRILLING HOLES

