

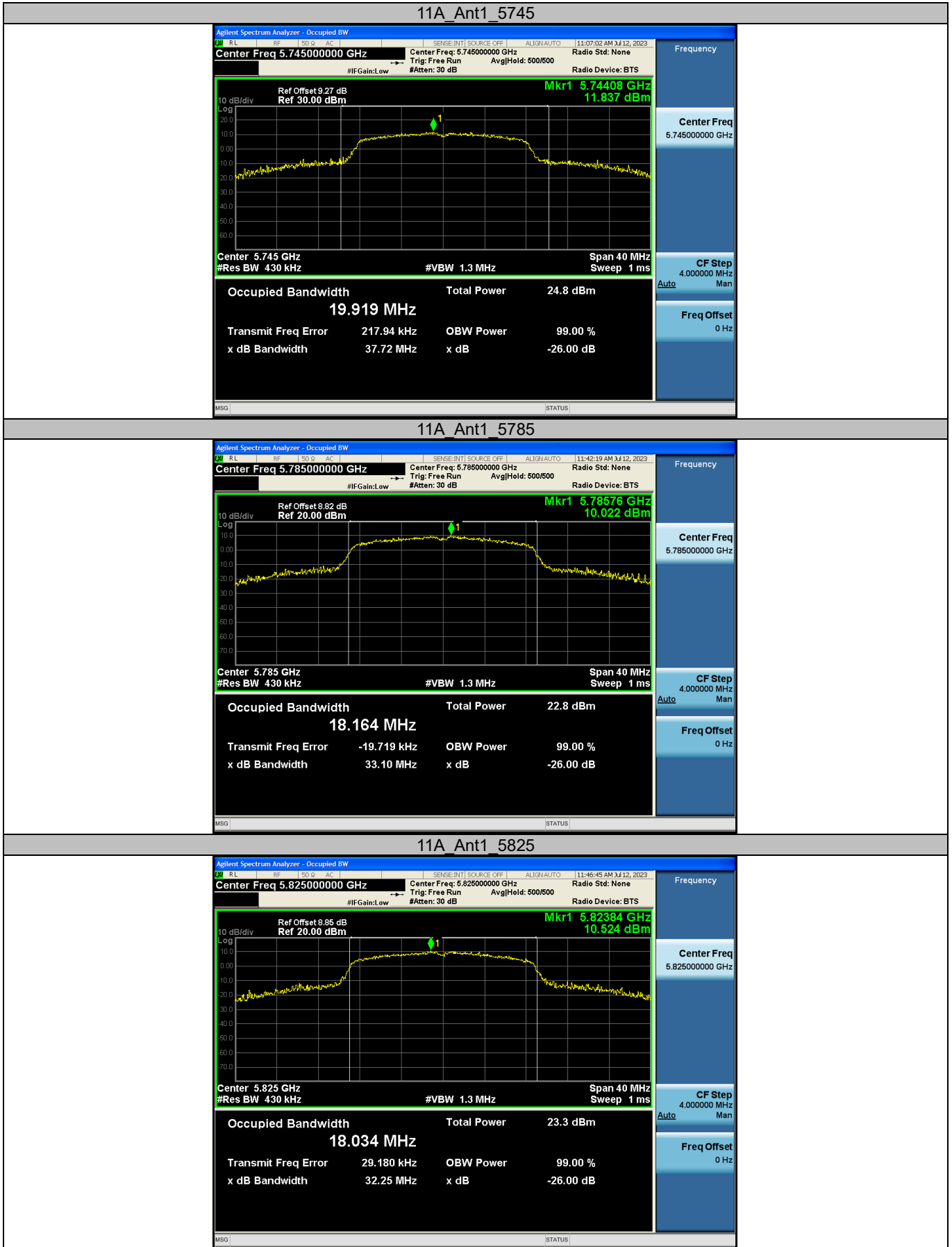
Appendix A1: Emission bandwidth (26dB bandwidth)

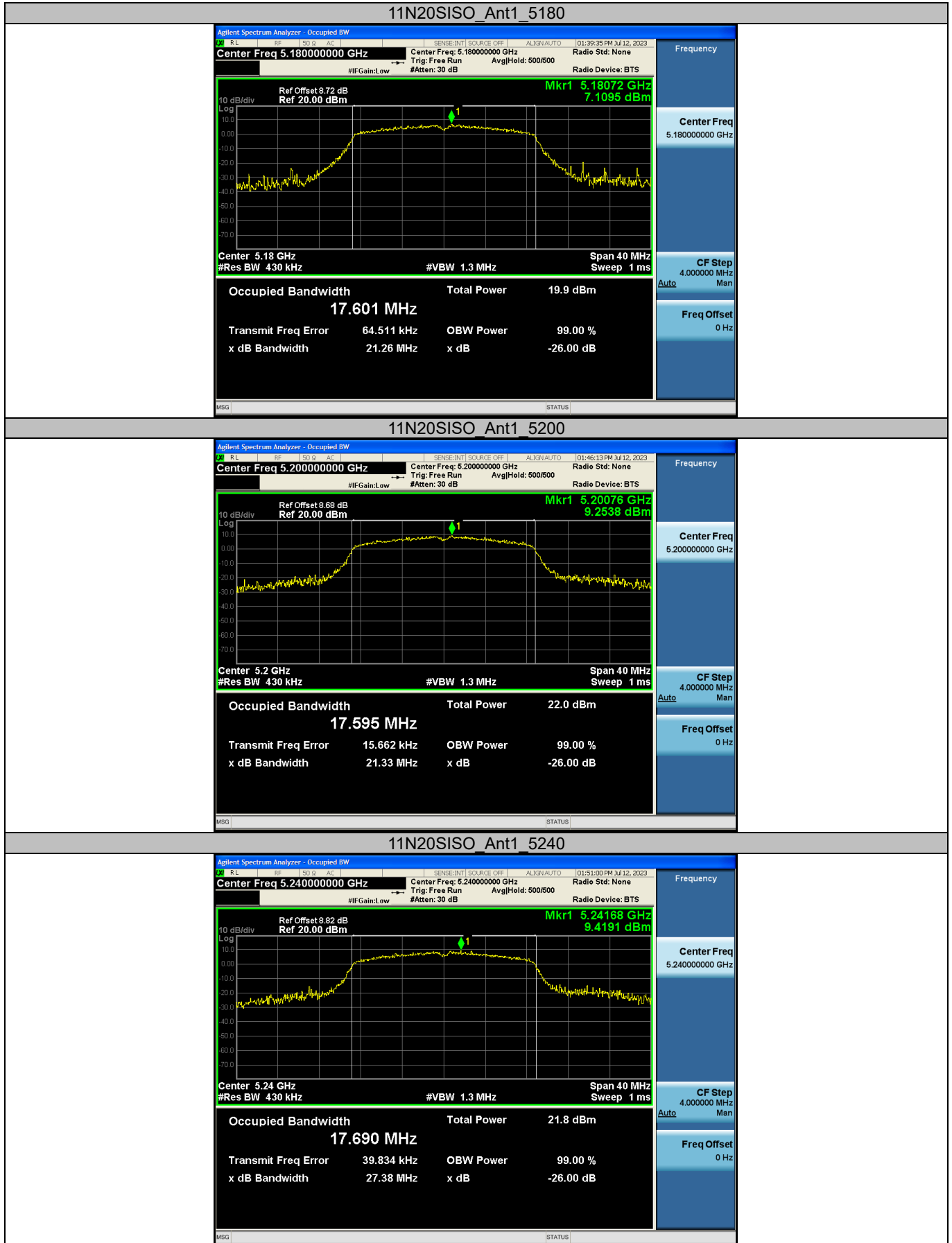
Test Result

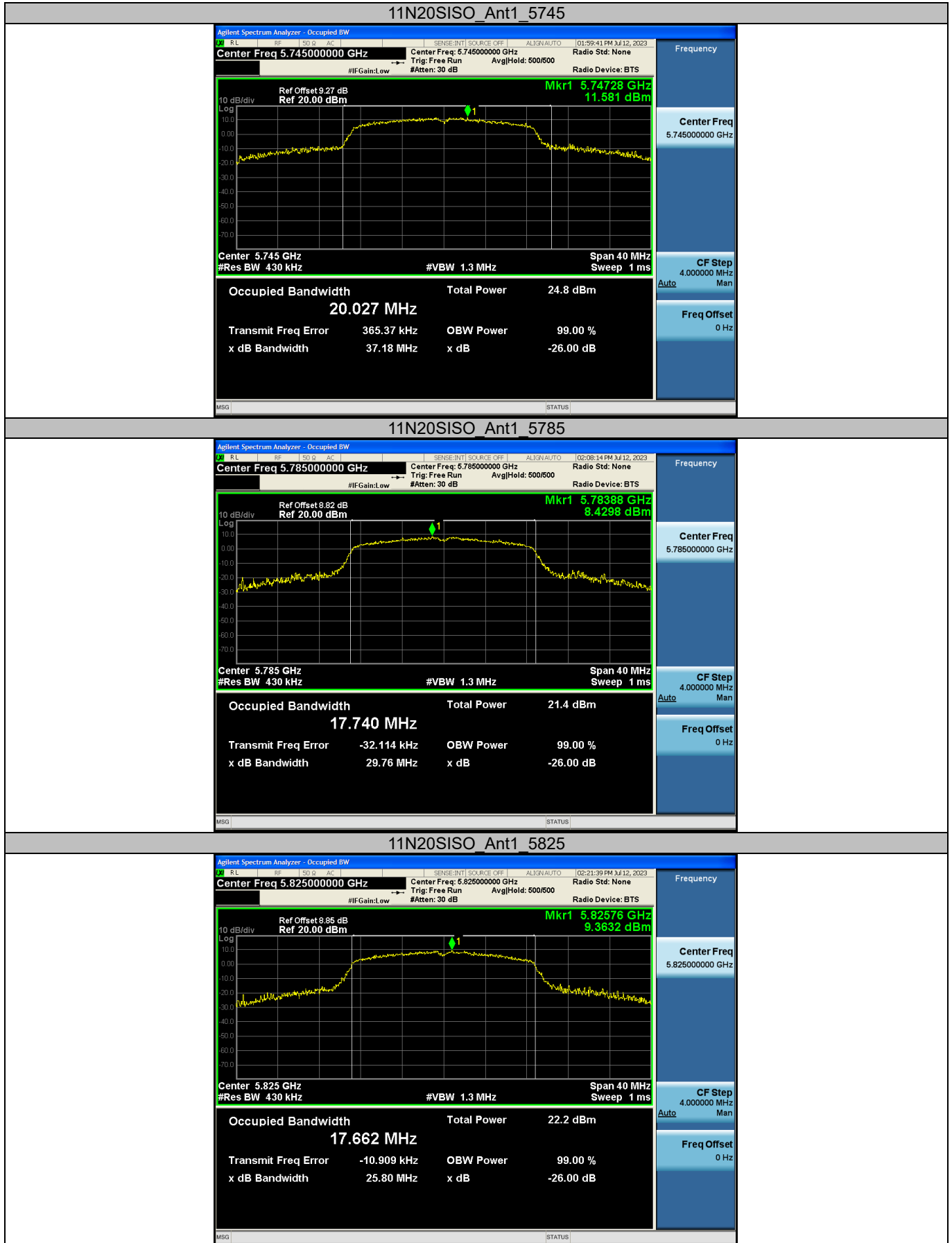
Test Mode	Antenna	Frequency [MHz]	26db EBW [MHz]
11A	Ant1	5180	21.26
		5200	22.09
		5240	23.39
		5745	37.72
		5785	33.10
		5825	32.25
11N20SISO	Ant1	5180	21.26
		5200	21.33
		5240	27.38
		5745	37.18
		5785	29.76
		5825	25.80

Test Graphs







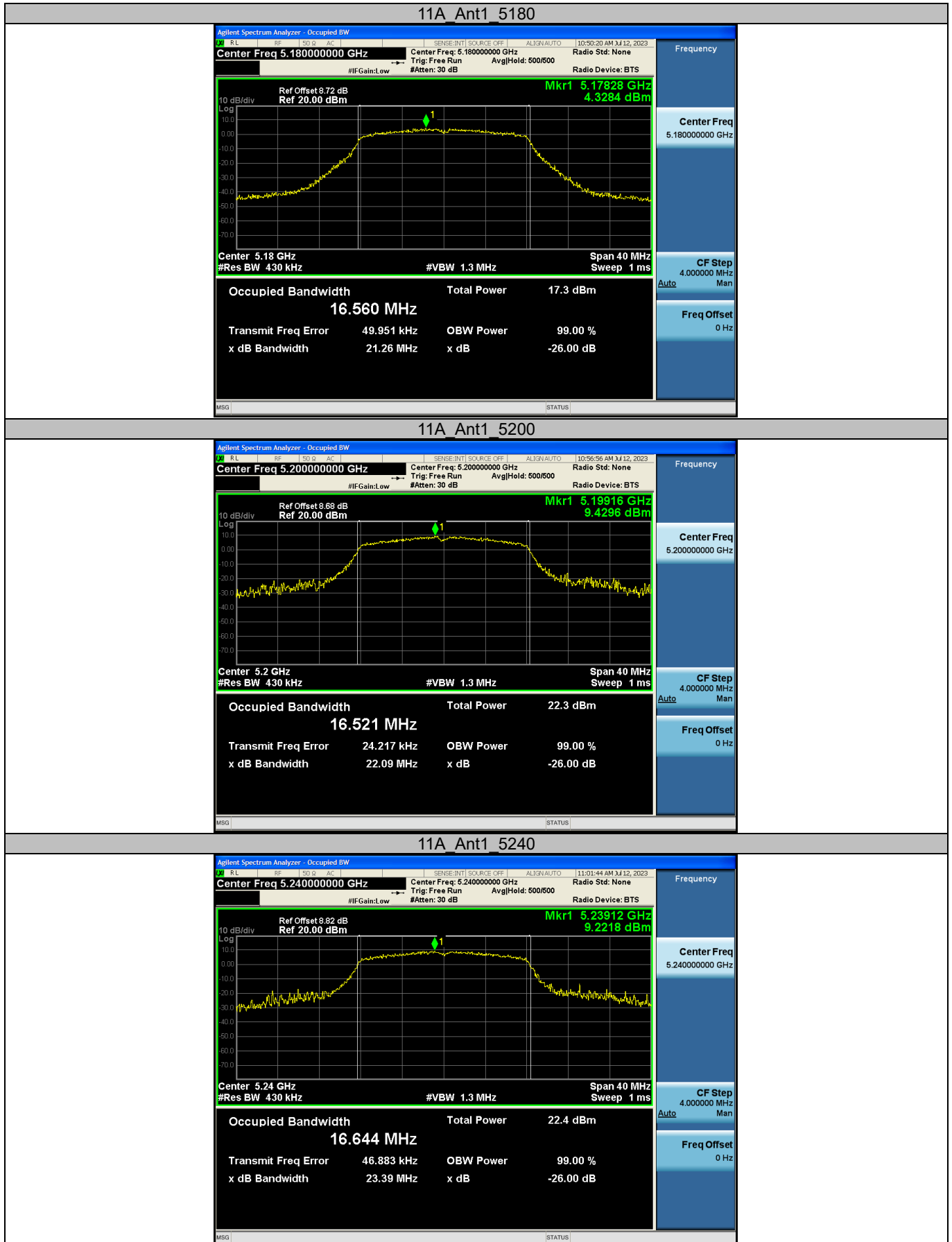


1.1 Appendix A2: Occupied channel bandwidth

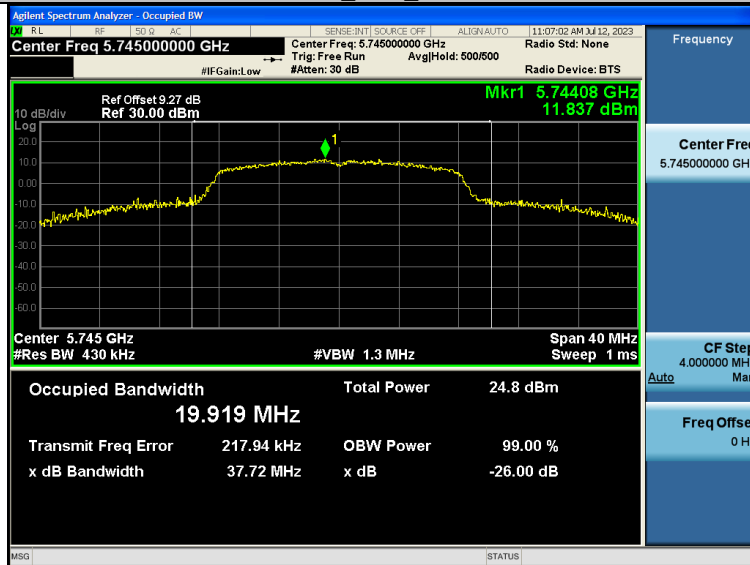
1.1.1 Test Result

TestMode	Antenna	Frequency[MHz]	OCB [MHz]	FL[MHz]	FH[MHz]	Limit[MHz]	Verdict
11A	Ant1	5180	16.560	5171.4900	5188.5100	---	---
		5200	16.521	5191.4670	5208.5330	---	---
		5240	16.644	5231.4610	5248.5390	---	---
		5745	19.919	5736.4850	5753.5150	---	---
		5785	18.164	5776.4935	5793.5065	---	---
		5825	18.034	5816.4990	5833.5010	---	---
11N20SISO	Ant1	5180	17.601	5170.9285	5189.0715	---	---
		5200	17.595	5190.8970	5209.1030	---	---
		5240	17.690	5230.8980	5249.1020	---	---
		5745	20.027	5735.9205	5754.0795	---	---
		5785	17.740	5775.9590	5794.0410	---	---
		5825	17.662	5815.9790	5834.0210	---	---

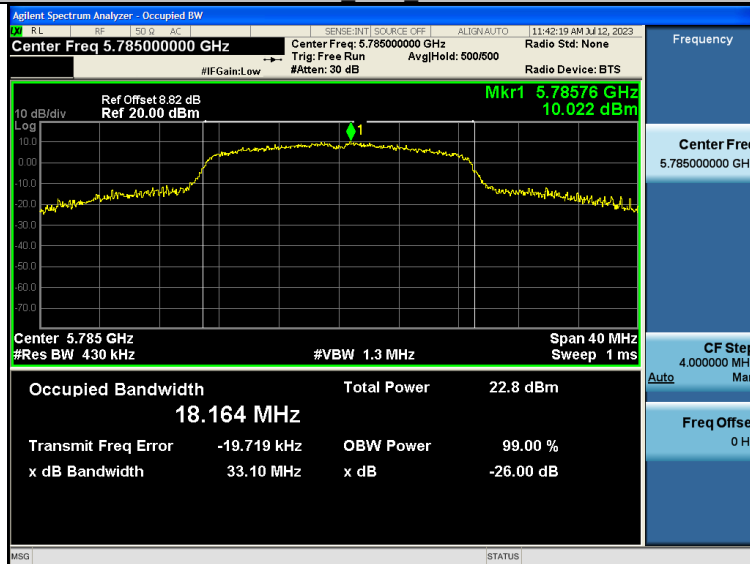
1.1.2 Test Graphs



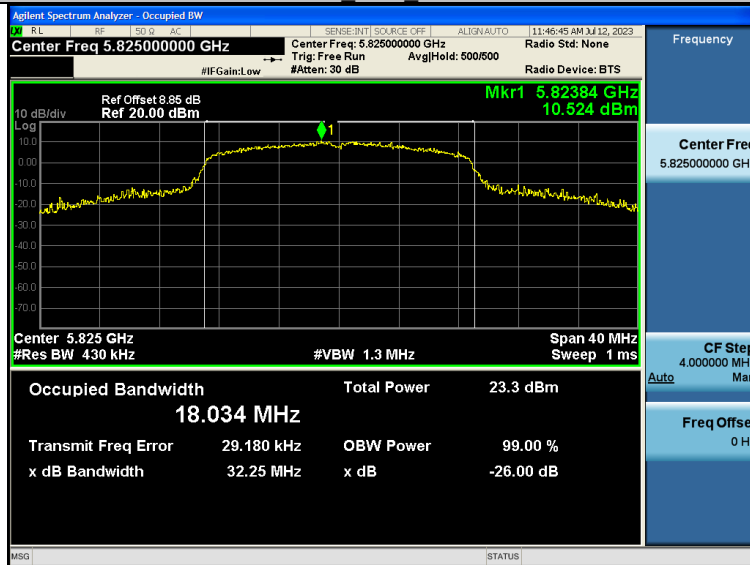
11A_Ant1_5745

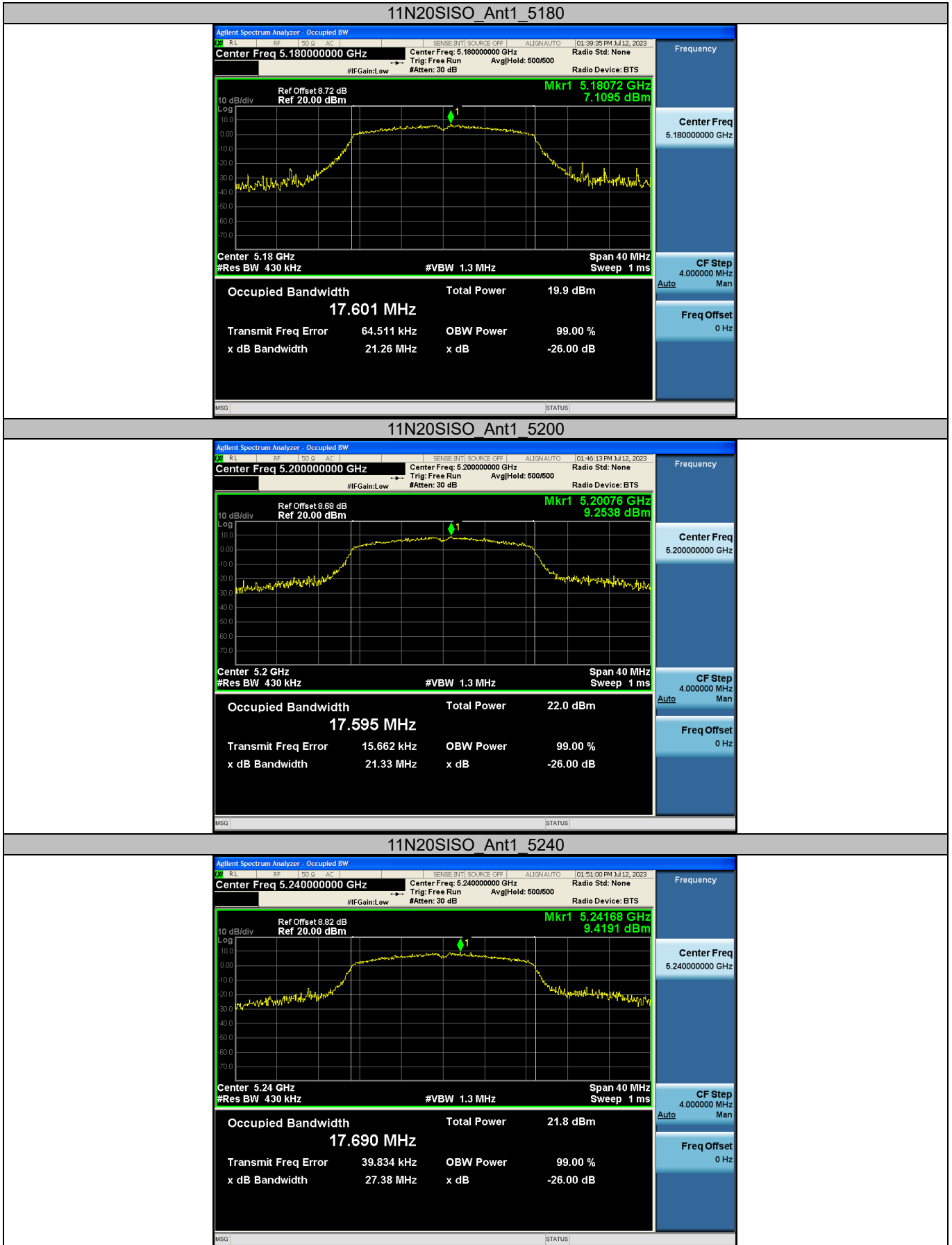


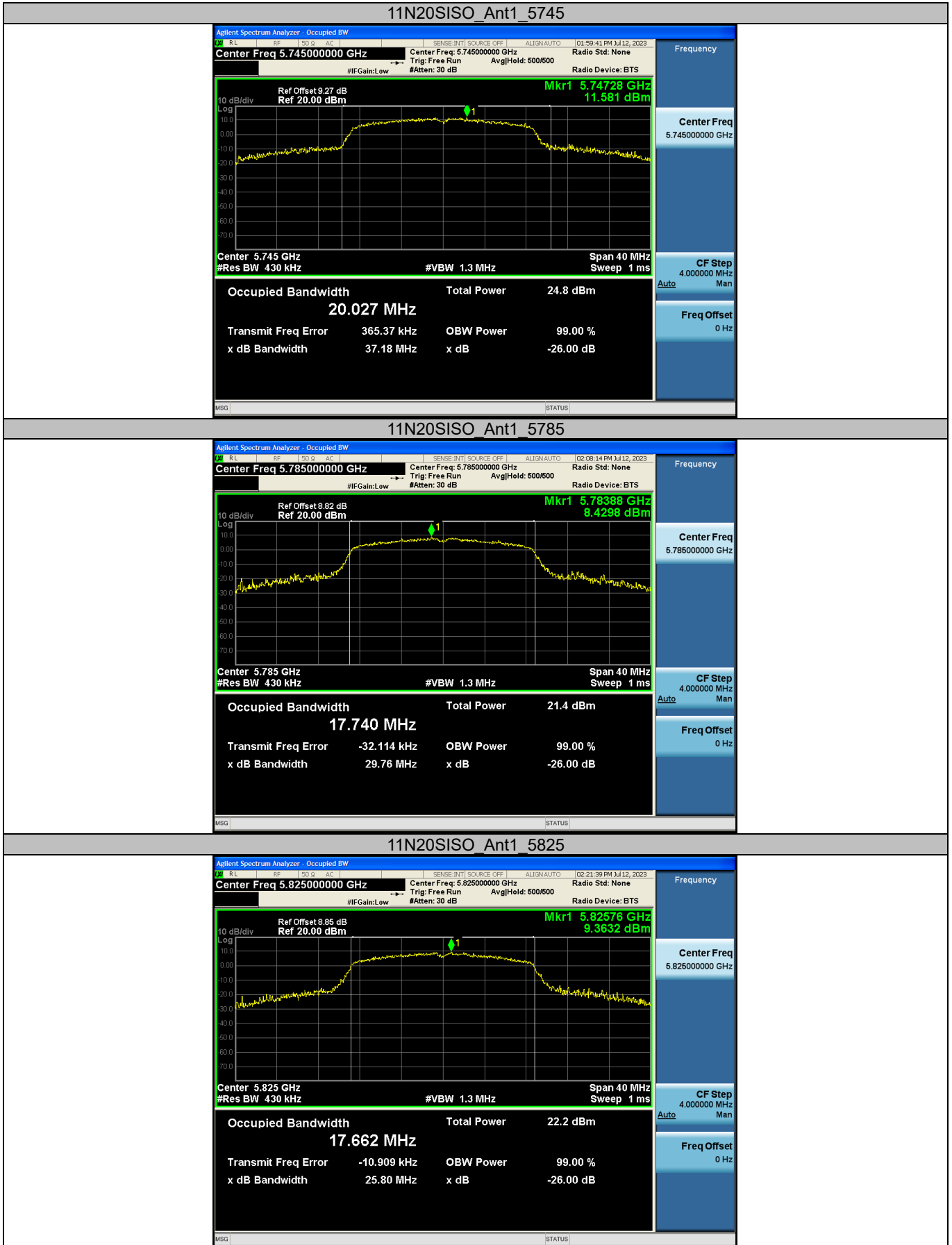
11A_Ant1_5785



11A_Ant1_5825







1.2 Appendix A3: Min emission bandwidth

1.2.1 Test Result

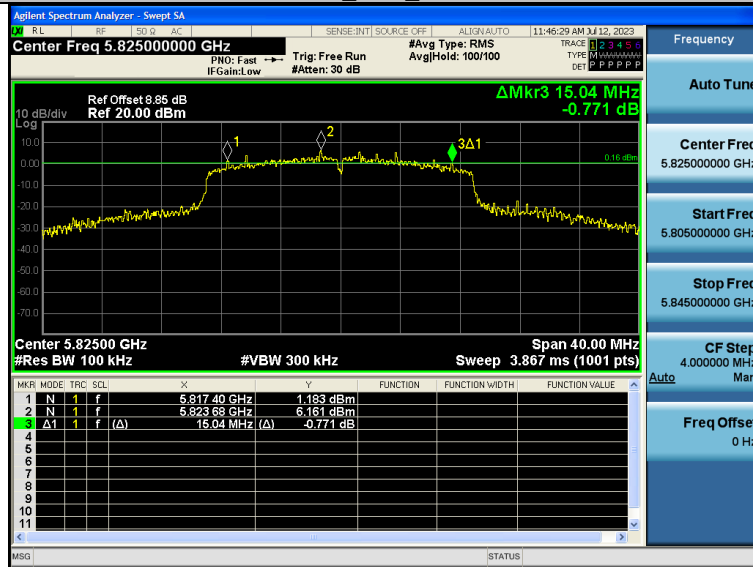
TestMode	Antenna	Frequency[MHz]	6db EBW [MHz]	FL[MHz]	FH[MHz]	Limit[MHz]	Verdict
11A	Ant1	5745	15.08	5736.840	5753.160	0.5	PASS
		5785	15.08	5776.840	5793.160	0.5	PASS
		5825	15.04	5816.880	5833.160	0.5	PASS
11N20SISO	Ant1	5745	15.08	5736.520	5753.360	0.5	PASS
		5785	15.44	5776.520	5793.640	0.5	PASS
		5825	12.96	5816.480	5833.640	0.5	PASS

1.2.2 Test Graphs

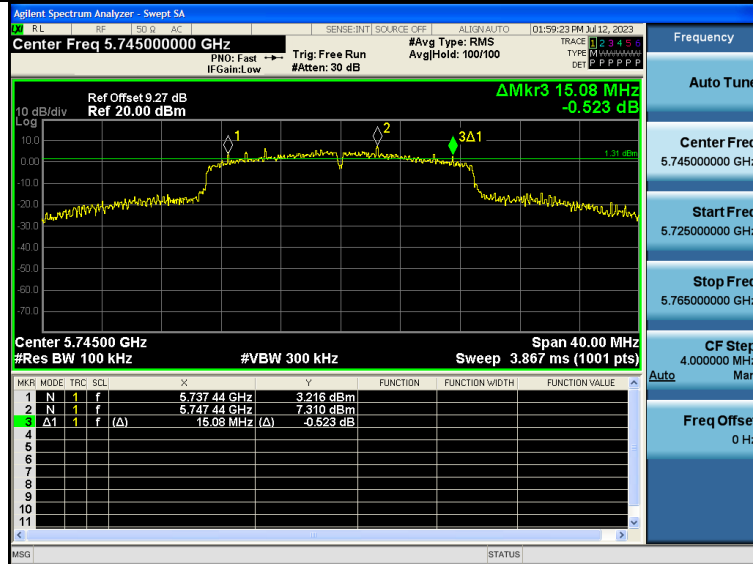
Test Graphs



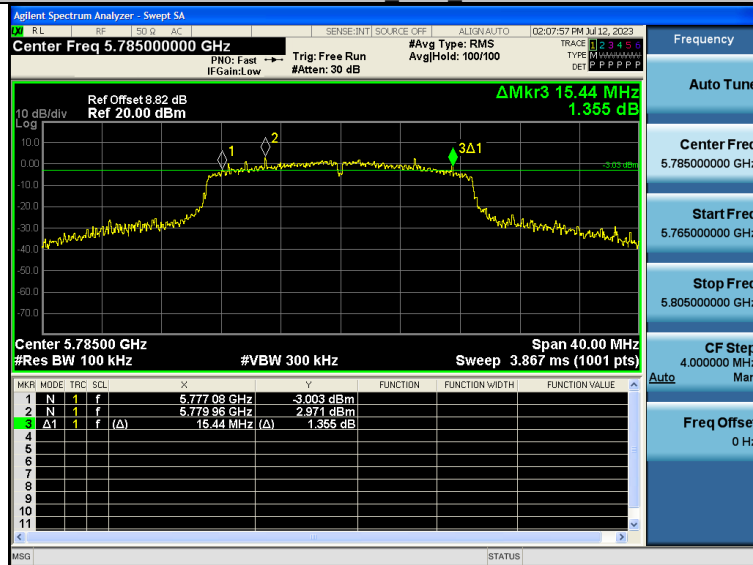
11A_Ant1_5825

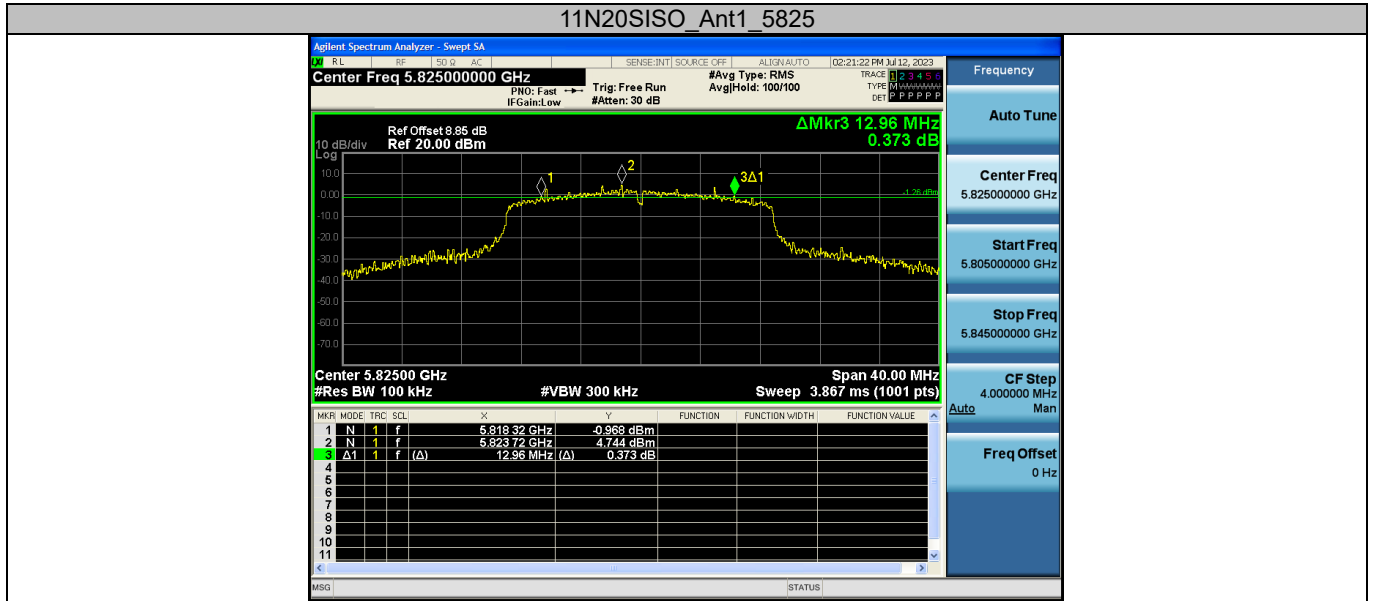


11N20SISO_Ant1_5745



11N20SISO_Ant1_5785



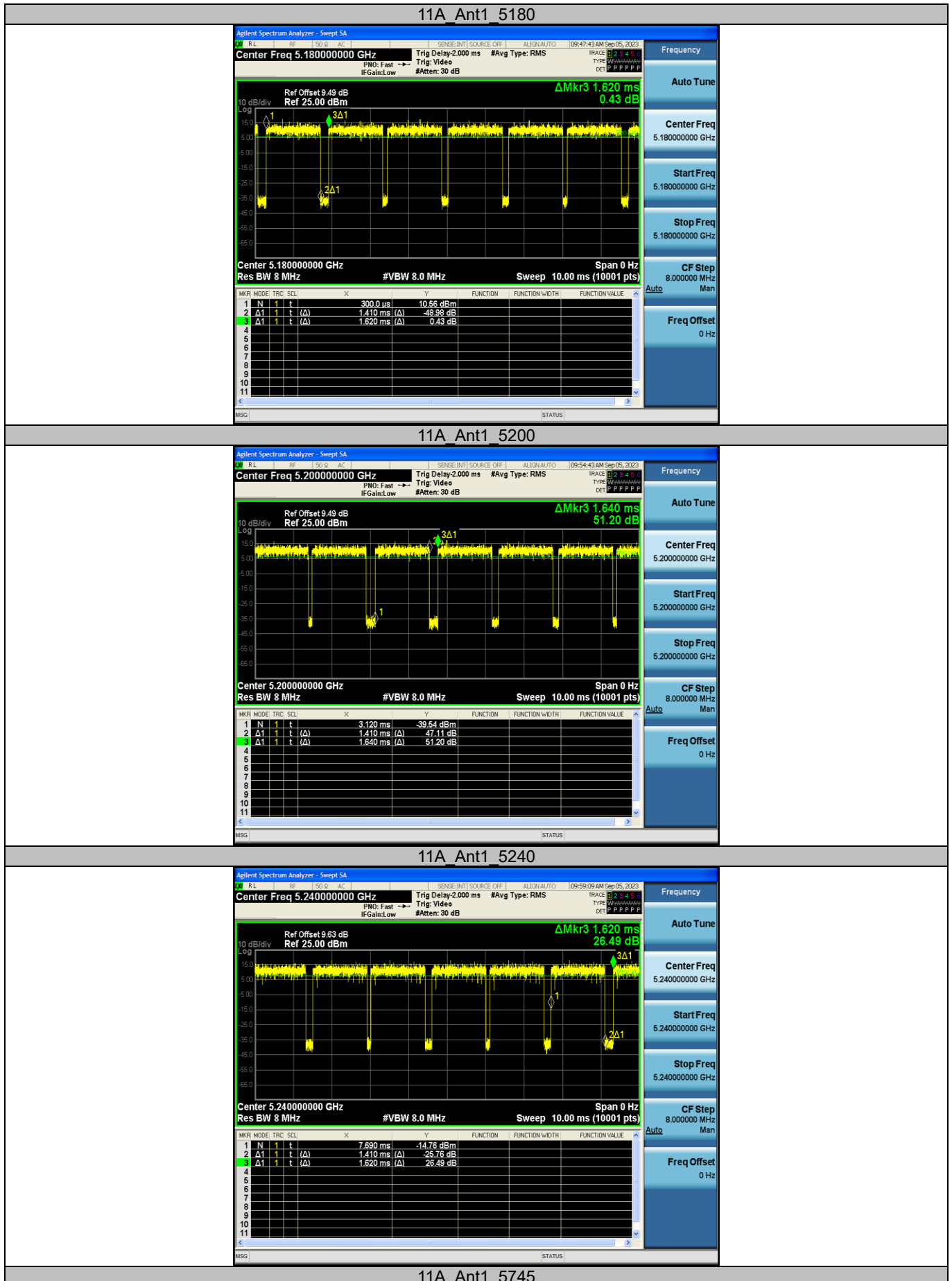


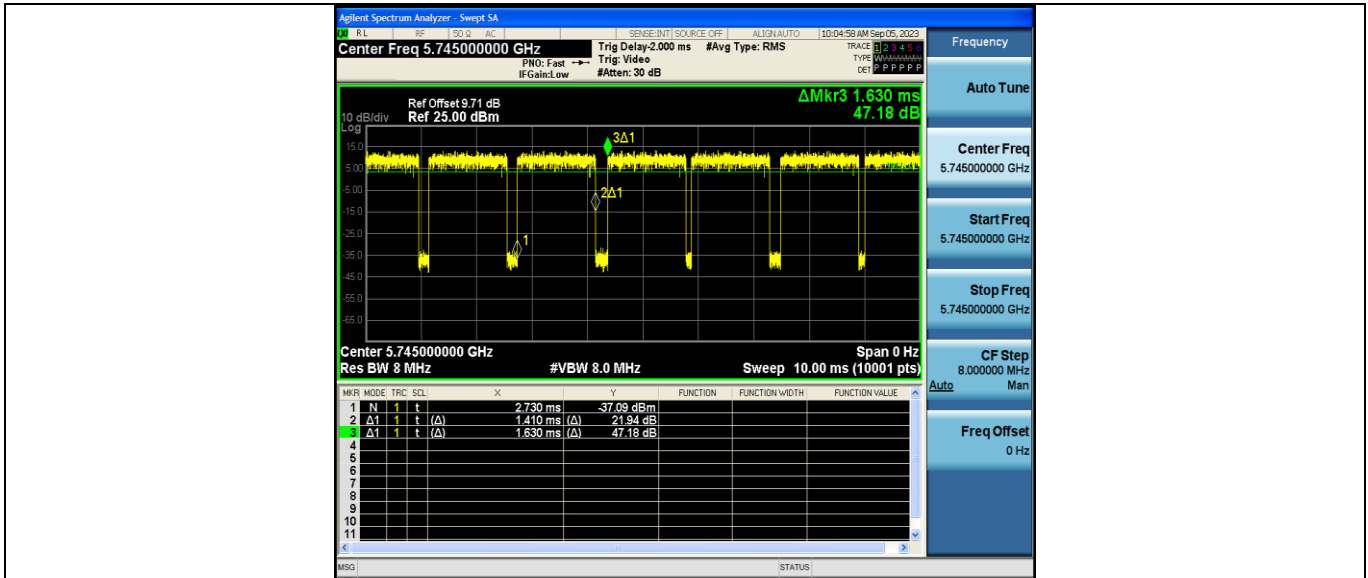
Appendix B: Duty Cycle

Test Result

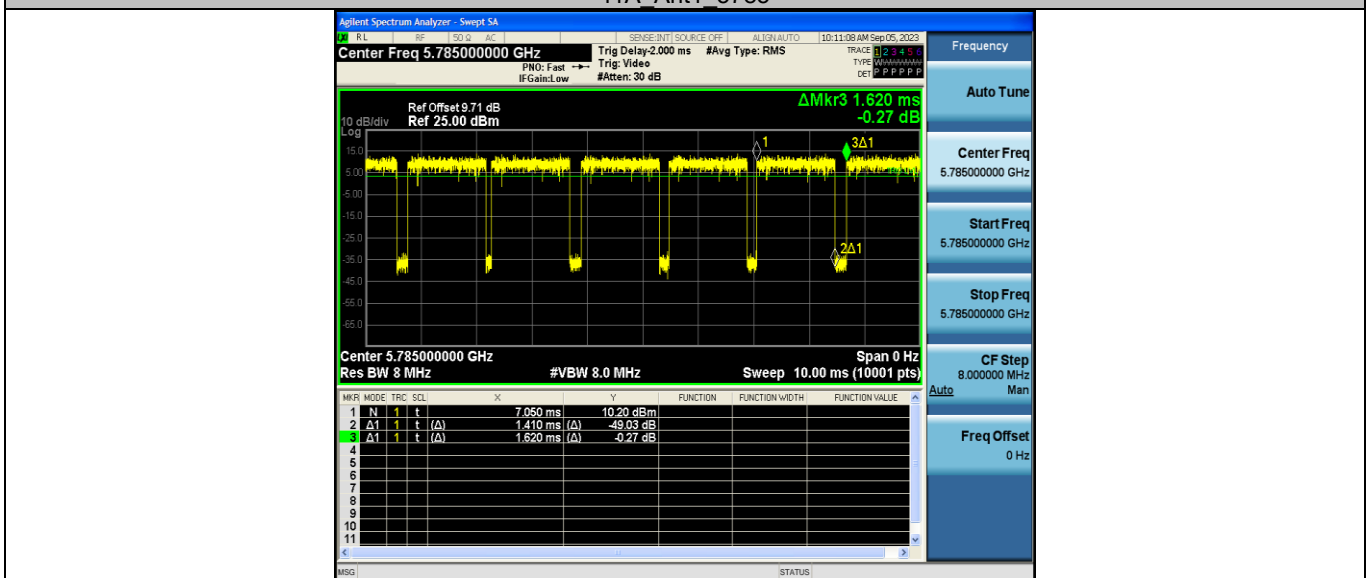
Test Mode	Antenna	Frequency [MHz]	Transmission Duration [ms]	Transmission Period [ms]	Duty Cycle [%]
11A	Ant1	5180	1.41	1.62	87.04
		5200	1.41	1.64	85.98
		5240	1.41	1.62	87.04
		5745	1.41	1.63	86.50
		5785	1.41	1.62	87.04
		5825	1.41	1.62	87.04
11N20SISO	Ant1	5180	1.31	1.53	85.62
		5200	1.31	1.52	86.18
		5240	1.32	1.55	85.16
		5745	1.32	1.55	85.16
		5785	1.31	1.54	85.06
		5825	1.31	1.51	86.75

Test Graphs

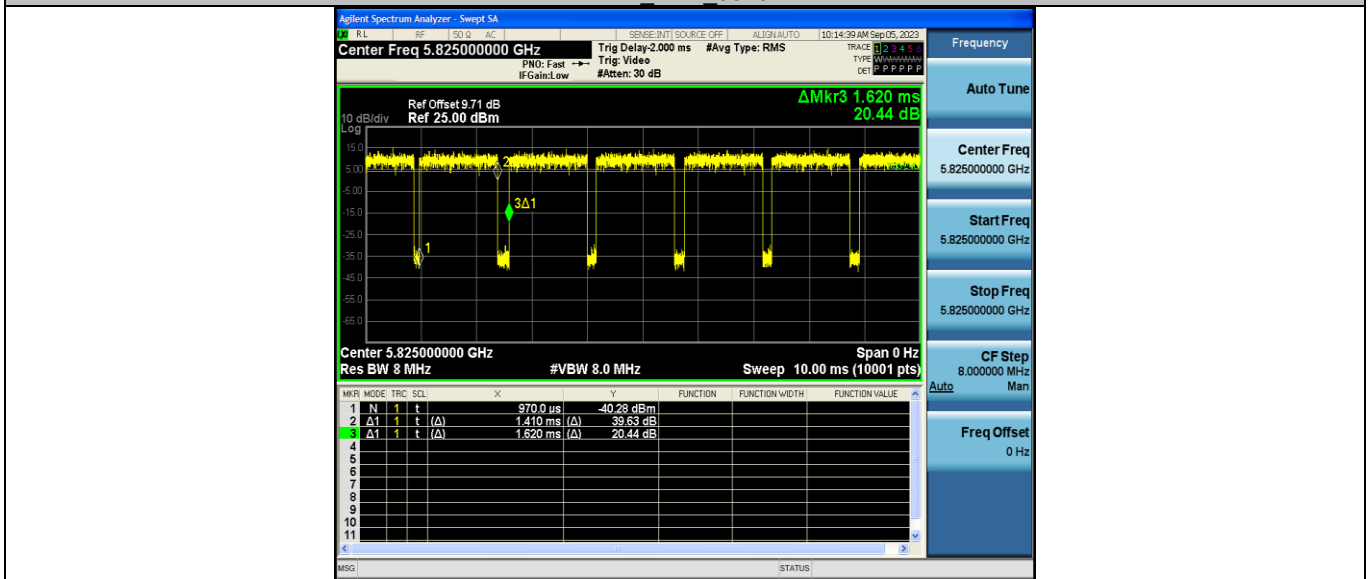




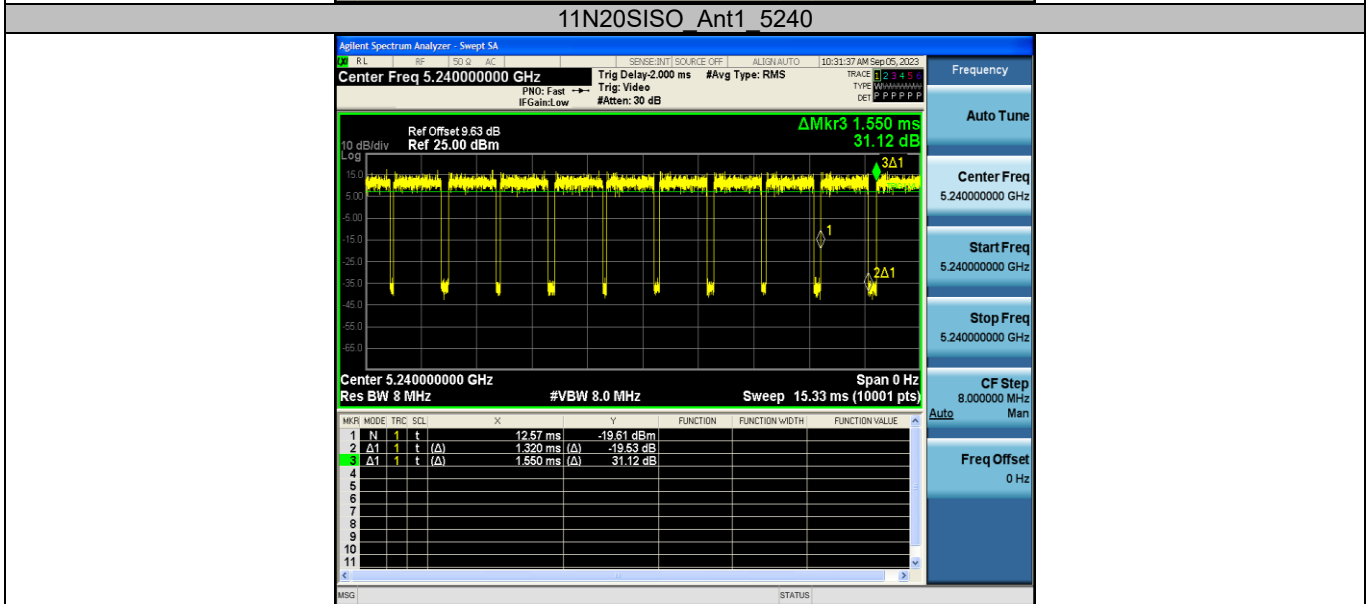
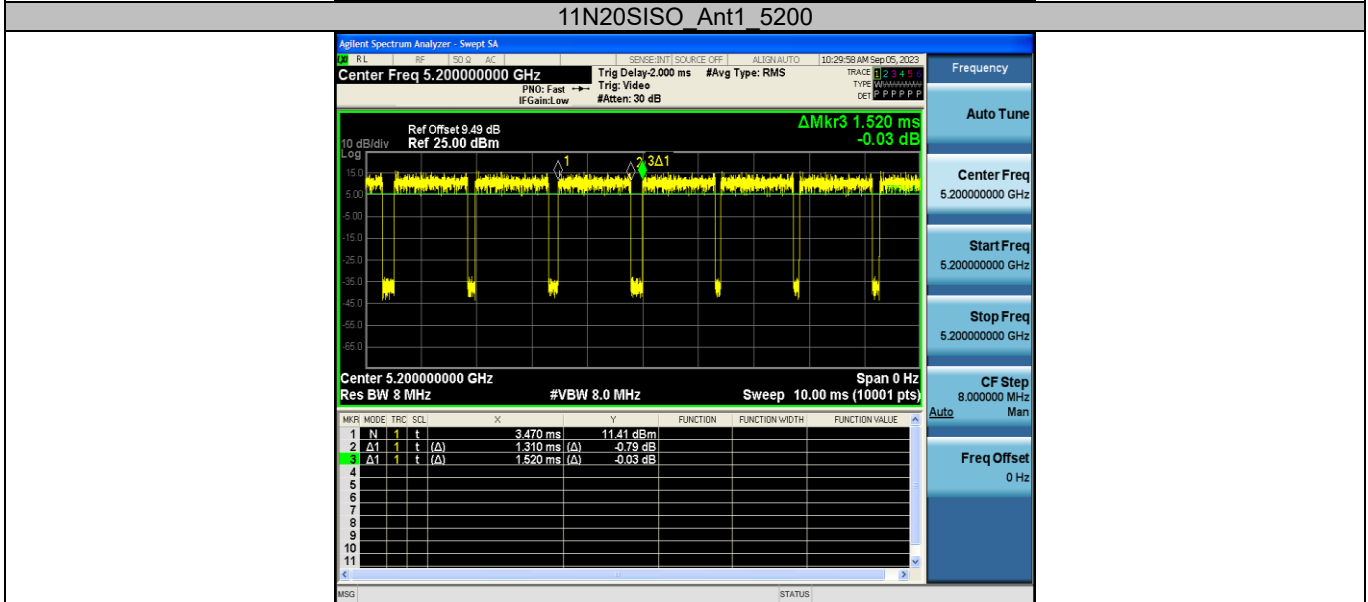
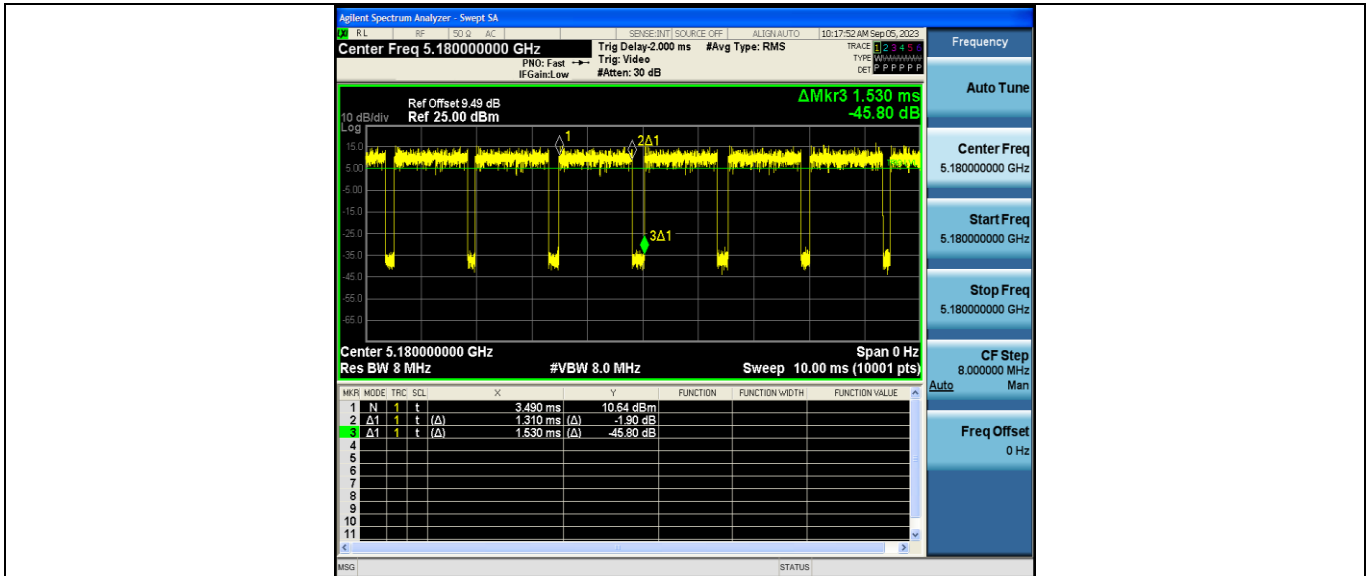
11A Ant1 5785

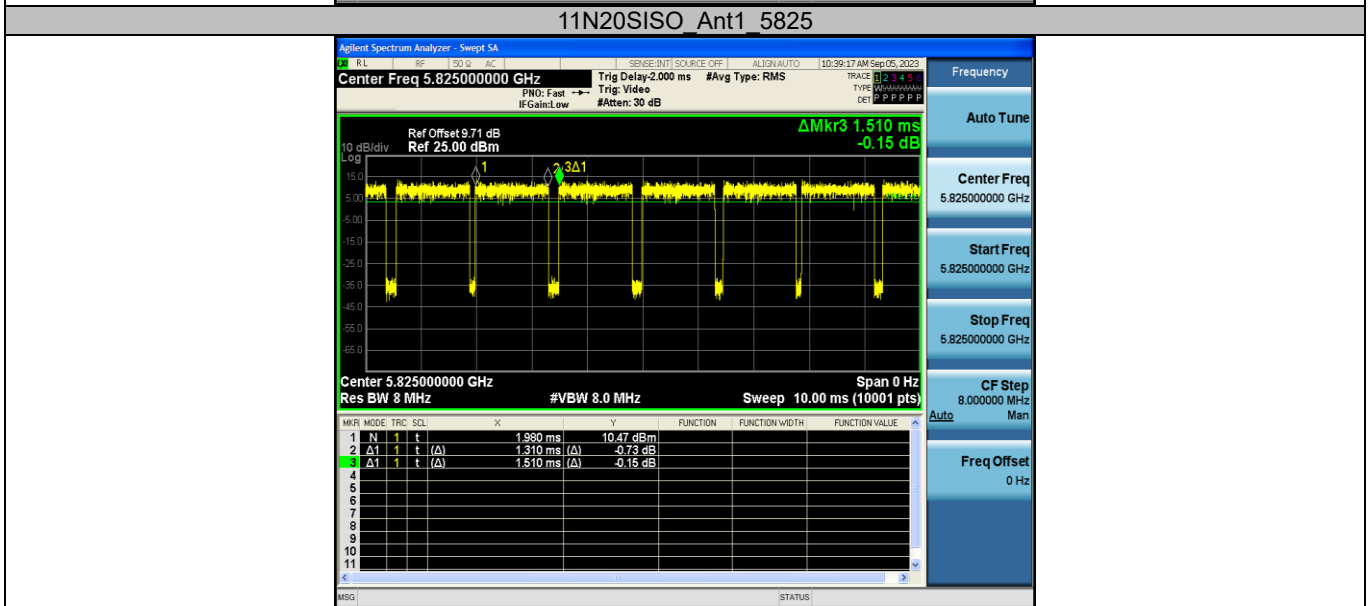
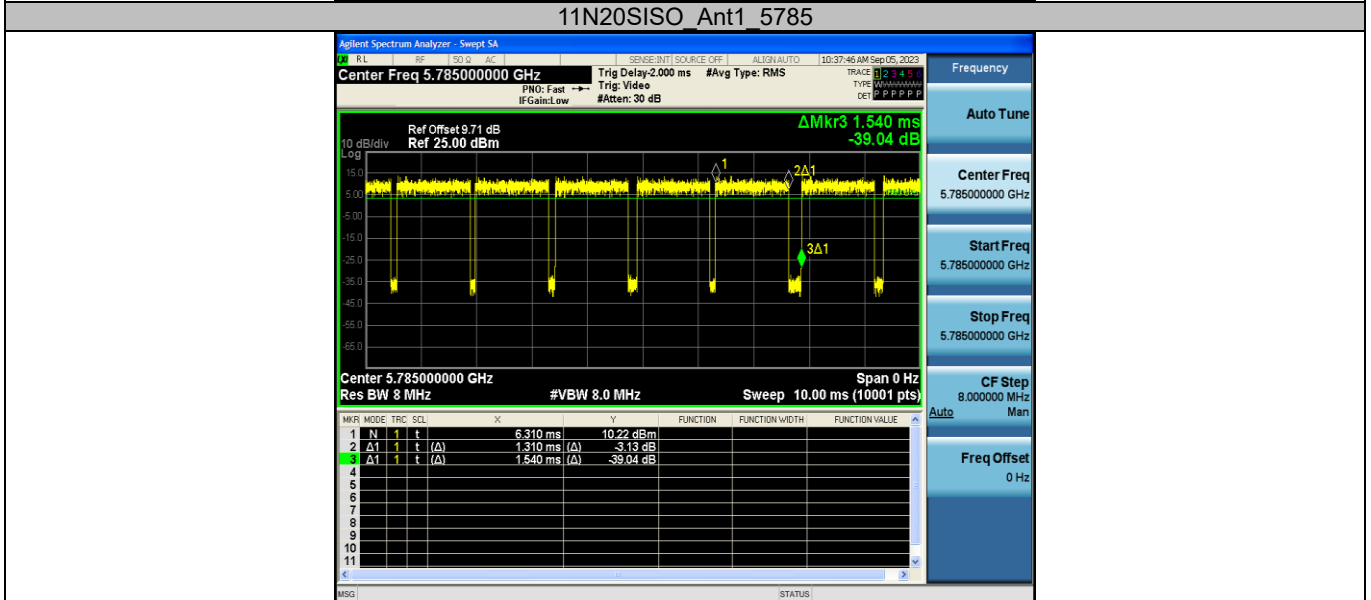
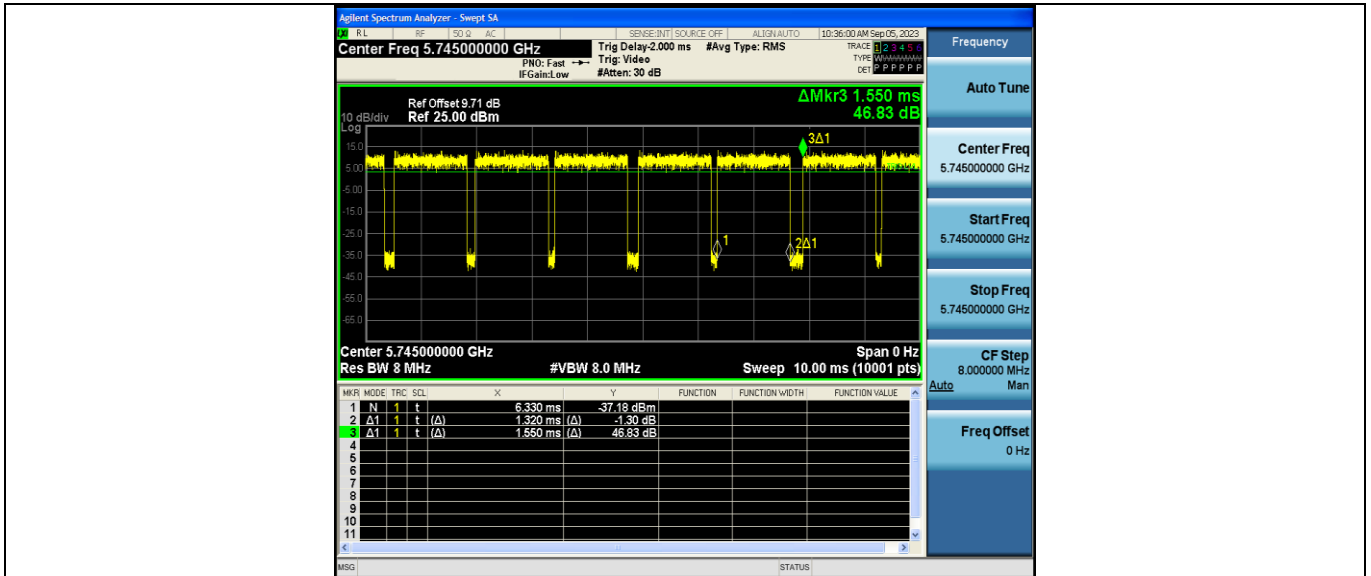


11A Ant1 5825



11N20SISO Ant1 5180





Appendix C: Maximum conducted output power

Test Result Channel Power

Test Mode	Antenna	Frequency [MHz]	Channel Power [dBm]	Duty Cycle [%]	DC Factor [dBm]	Result [dBm]	Limit [dBm]	EIRP [dBm]	Verdict
11A	Ant1	5180	7.36	87.04	0.60	7.96	≤23.98	10.94	PASS
		5200	7.24	85.98	0.66	7.90	≤23.98	10.88	PASS
		5240	8.21	87.04	0.60	8.81	≤23.98	11.79	PASS
		5745	6.15	86.50	0.63	6.78	≤30.00	9.76	PASS
		5785	6.47	87.04	0.60	7.07	≤30.00	10.05	PASS
		5825	6.52	87.04	0.60	7.12	≤30.00	10.10	PASS
11N20SIS O	Ant1	5180	7.08	85.62	0.67	7.75	≤23.98	10.73	PASS
		5200	7.63	86.18	0.65	8.28	≤23.98	11.26	PASS
		5240	7.94	85.16	0.70	8.64	≤23.98	11.62	PASS
		5745	5.93	85.16	0.70	6.63	≤30.00	9.61	PASS
		5785	6.30	85.06	0.70	7.00	≤30.00	9.98	PASS
		5825	6.40	86.75	0.62	7.02	≤30.00	10.00	PASS

Note: U-NII-1 Gain: 2.98 dBi, U-NII-3 Gain: 2.98 dBi