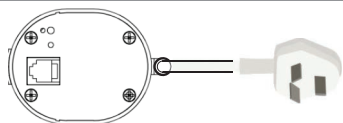
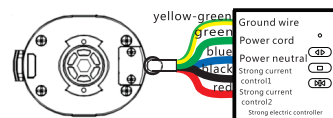


Motor wiring instructions



Direct plug-in power supply: It can realize remote control, dry contact control and pull start function.

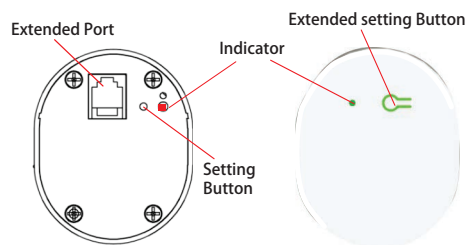


Five-core wire connection: It can realize strong current control, regardless of whether the strong current control line has electricity or not, it can realize remote control, dry contact control, and pull start functions.

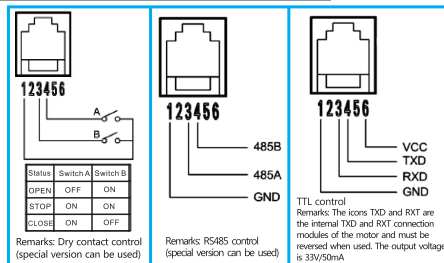
Note: The voltage of the strong current control line is AC90~240V 50/60HZ

When the red wire is connected and the black wire is disconnected, the motor rotates forward; when the black wire is connected and the red wire is disconnected, the motor reverses; when both the black and red wires are disconnected, the motor stops.

Motor button description



Weak current control wiring

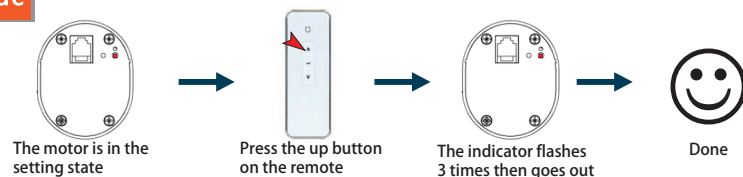


Enter setting state

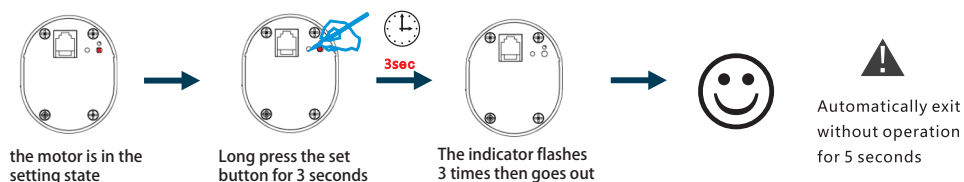


The setting state goes out within 10 seconds if there is no other operation !

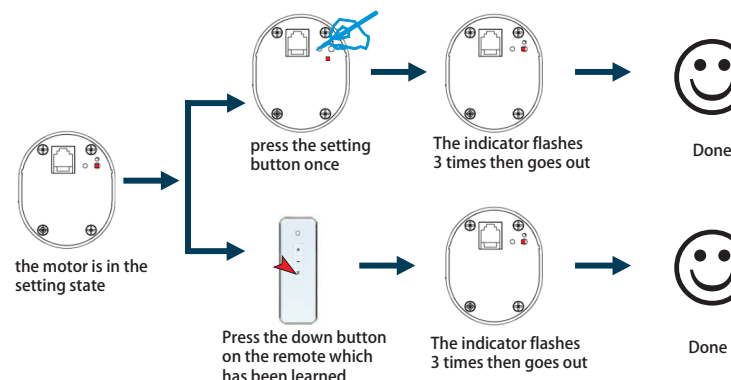
Learn code



Restore factory settings (clear code)



Reverse Settings



It is effective only when the the remote in use has been learned!

The working direction of all the control will be reversed after setting!

FCC Warning

This device complies with Part 15 of the FCC Rules.

Operation is subject to the following two conditions:

- (1) this device may not cause harmful interference.
- (2) this device must accept any interference received, including interference that may cause undesired operation.

This device has been tested and found to comply with the limits for a Class B digital device, pursuant to Part 15 of the FCC Rules. These limits are designed to provide reasonable protection against harmful interference in a residential installation. This device generates, uses and can radiate radio frequency energy and, if not installed and used in accordance with the instructions, may cause harmful interference to radio communications.

However, there is no guarantee that interference will not occur in a particular installation. If this device does cause harmful interference to radio or television reception, which can be determined by turning the device off and on, the user is encouraged to try to correct the interference by one or more of the following measures:

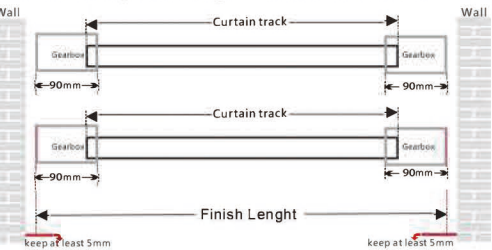
- Reorient or relocate the receiving antenna.
- Increase the separation between the device and receiver.
- Connect the device into an outlet on a circuit different from that to which the receiver is connected.
- Consult the dealer or an experienced radio/TV technician for help

Changes or modifications not expressly approved by the party responsible for compliance could void the user's authority to operate the equipment

DIY Curtain Track Assembly



Curtain model:
Finish lenght= wall to wall-(1 to 4)CM
Wall mounting finish lenght= window size+ 20CM



Step 1:
The belt passes through the main gear box and the track completely.
Please note that the track cannot be inserted into the main gear box.



Step 2:
Both of the end belt divide to show 7 tooth of the track. Then cut it.
Please note that the track cannot be inserted into the main gear box.



Step 3:
Press on gear box, take out the belt, line up the end, make the mark.



Step 4:
At the end of belt, install the belt clamp.



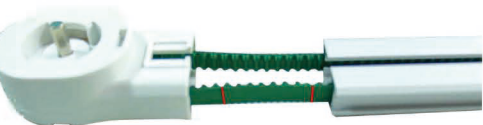
Step 5:
After installing the belt clamp, install the first carrier assembly.
Please note that the carrier assembly direction.



Step 6:
After the assembly of the carrier, slide it into the track.



Step 7:
Pull out the belt about 10-15cm from main gear box side, make the second mark with 10 tooth space from the first mark



Step 8:
Install the belt clamp and carrier assembly.
Please note that the carrier assembly direction.



Step 9:
Assemble the corresponding accessories: runners, buffers and track locker.
Standrad quantity of runners: 8 pcs/1meter, and so on.



Step 10:
After the accessories are put in, tighten the screws of the track locker.
The part of main gear box is assembled.



Step 11:
Pass the belt through vice gear box then install clamp and second carrier assembly.
Please note that the direction of the first carrier must be consistent.



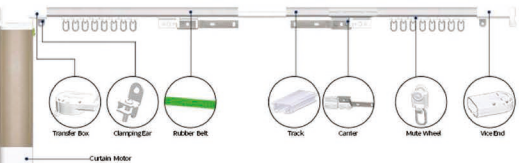
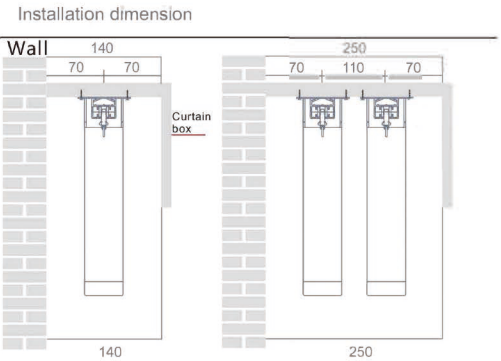
Step 12:
After install the second carrier, please be sure to insert the pin to fix.



Step 13:
Install carrier arm and other components, then tighten the carrier screw.
Put into track locker and , tighten the screw.
The part of vice gear box is assembled.



Step 14:
Install top mount bracket.
Standrad quantity of top mount bracket: 2pcs/1meter, and so on.



SERVICE

- 1.During the free warranty period, if the product breaks down during normal use,we will offer free maintenance for the product.
- 2.Natural disasters/man-made equipment failures, disassembly and repair without the permission of our company, no warranty card, products beyond the free warranty period, etc., are not within the scope of free warranty.
- 3.Any commitment (oral or written) made by the third party (including the dealer/ service provider) to the user beyond the warranty scope shall be executed by the third party
- 4.Please keep this warranty card to ensure your rights
- 5.Our company may update or change the products without notice. Please refer to the official website for the updates.

RECYCLING INFORMATION

All products marked with the symbol for separate collection of waste electrical and electronic equipment (WEEE Directive 2012/19 / EU) must be disposed of separately from unsorted municipal waste.To protect your health and the environment, this equipment must be disposed of at designated collection points for electricaland electronic equipment designated by the government or local authorities.Correct disposal and recycling will help prevent potential negative consequencesfor the environment and human health. To find out where these collection points are and how they work, contact the installer or your local authority.

WARRANTY CARD

Product Information

Product Name _____

Product Type _____

Purchase Date _____

Warranty Period _____

Dealer Information _____

Customer's Name _____

Customer Phone _____

Customer Address _____

Maintenance Records

Failure date	Cause Of Issue	Fault Content	Principal

Subscribe here

Please read the instruction manual carefully before using the product