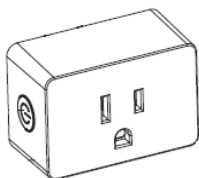




# User Manual

WiFi Socket



v1.2

## Introduction

By the smart socket, you can remotely switch on or off home appliances simple with a network-connected mobile phone. Or just press button on device to switch them on or off.

## Specification

Rated voltage : AC 100-120V 60Hz  
 Rated current : 15A (resistive load)  
 Rated load : 1800W (resistive load)  
 IP level : IP20  
 Working temperature : -10 ℃ to 40 ℃  
 App support : iOS and Android

## Using Device

### Power Button

Press the button to switch the device ON or OFF.

- \* To factory reset the smart plug, press and hold the button for 5 seconds until the LED flashes.

## App Control

Remote on/off : switch on or off the device remotely.  
 Timer : switch on or off the device by timers automatically.  
 Countdown : switch on or off the device after a period time.  
 Cyclic task: switch on and off the device repeatedly.

## Voice Control

Bind the smart plug to Alexa or Google home. Then you can switch on and off the device by voice.

## Warnings

- Ensure the device is used within rated power to keep safe. Total power shouldn't be more than limit.
- Do not press the button quickly and frequently.
- Do not open the device. Only qualified person can repair.
- Keep the plug out of reach from children for safety concern.
- Contact support team for replacement before using if any damage due to transportation.
- Switch off socket, then plug in, then switch on. Thus no spark.
- Do not cover the device when using.
- This device is for indoor use only.
- Keep the device in dry location.
- Ensure fully plugged in before using, otherwise maybe fire hazard.



## Install App

**Method 1 :** Search and download 'DayBetter' APP on APP store or Google Play.

**NOTE: APP name is 'DayBetter'.**



DayBetter

**Method 2 :** Scan or click the QR code below and switch to APP store or Google Play to download.



Please allow permissions required by APP. We guarantee information security.

## Log In

You can either log in by Email verification code or by password.

- (1) New user please create new account first.
- (2) You can set password on App setting page, then you can use password to log in.

Create an account

Password login

Verification code login

## Turn on phone WiFi and bluetooth



Turn on bluetooth and Wi-Fi on your smart phone and connect phone to 2.4GHz Wi-Fi. (After config device online, you can switch phone to other Wi-Fi.)

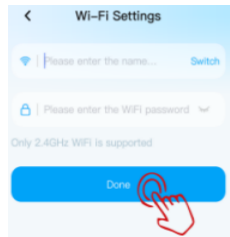
**Note:**  
5GHz Wi-Fi is not supported.

## Search and Add device

Click "Go to search" to search nearby devices.



Go on to connect device to WiFi .

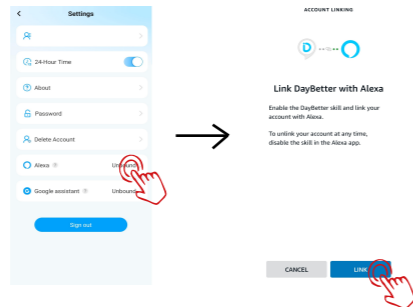


- NOTE:** 1. Please move device close to WiFi router to help connect.  
2. Try again if fail which may happen rarely.  
3. If still failed, please reset device and try again.

## Link Alexa or Google Home

Method 1: Bind Alexa on DayBetter APP( Recommended )

- (1) Go to APP setting page and click Alexa tab to call LINK page.
- (2) Then just click LINK on the link page.
- (3) Wait a second. Success. You can find online device shown up on Alexa APP.



Note: Ensure the device is WiFi-connected and Alexa APP already logged in, before you link to Alexa.

Method 2: Bind DayBetter on Alexa APP( NOT recommended)

Search and enable 'DayBetter' skill on Alexa APP.  
Please scan the QR code for more help.



Please scan the QR code for how to link Google Home.



## Trouble Shooting

**a) APP can not find the device.**

- Make sure the phone bluetooth is on.
- Allow the permissions of APP. APP needs them to connect.
- Kill APP, turn off bluetooth and turn on bluetooth again, then start APP to add device again.
- Ensure phone within 4ft from product when connecting.
- Your phone may be incompatible with the APP, try another phone.

**b) Failed to connect to Wi-Fi.**

- Check Wi-Fi supports 2.4GHz. Not 5GHz.
- Reset device by hold button for 5 seconds until LED flashes.
- Bring device close to Wi-Fi router to improve signal.
- Add device and connect it to Wi-Fi again.

**c) Device not shown on Alexa APP.**

- Remove device from DayBetter APP and add the device again.
- Unlink Alexa, and Link Alexa again.

## Contact us

If you have any questions or product issues, please contact seller via the email on the package or get product support on the order page in your purchasing account. All messages will be replied within 24 hours.

### FCC Caution:

This device complies with part 15 of the FCC Rules. Operation is subject to the following two conditions: (1) This device may not cause harmful interference, and (2) this device must accept any interference received, including interference that may cause undesired operation.

Any Changes or modifications not expressly approved by the party responsible for compliance could void the user's authority to operate the equipment.

**Note:** This equipment has been tested and found to comply with the limits for a Class B digital device, pursuant to part 15 of the FCC Rules. These limits are designed to provide reasonable protection against harmful interference in a residential installation. This equipment generates uses and can radiate radio frequency energy and, if not installed and used in accordance with the instructions, may cause harmful interference to radio communications. However, there is no guarantee that interference will not occur in a particular installation. If this equipment does cause harmful interference to radio or television reception, which can be determined by turning the equipment off and on, the user is encouraged to try to correct the interference by one or more of the following measures:

- Reorient or relocate the receiving antenna.
- Increase the separation between the equipment and receiver.
- Connect the equipment into an outlet on a circuit different from that to which the receiver is connected.
- Consult the dealer or an experienced radio/TV technician for help.

This equipment complies with FCC radiation exposure limits set forth for an uncontrolled environment. This equipment should be installed and operated with minimum distance 20cm between the radiator & your body.

## ISED Statement

English: This device contains licence-exempt transmitter(s)/receiver(s) that comply with Innovation, Science and Economic Development Canada's licence-exempt RSS(s). Operation is subject to the following two conditions:

- (1) This device may not cause interference.
- (2) This device must accept any interference, including interference that may cause undesired operation of the device.

The digital apparatus complies with Canadian CAN ICES - 3 (B)/NMB - 3(B).

French: Cet appareil contient des émetteurs/récepteurs exempts de licence qui sont conformes aux RSS exemptés de licence d'Innovation, Sciences et Développement économique Canada.

L'exploitation est soumise aux deux conditions suivantes :

- (1) Cet appareil ne doit pas provoquer d'interférences.
- (2) Cet appareil doit accepter toute interférence, y compris les interférences susceptibles de provoquer un fonctionnement indésirable de l'appareil.

l'appareil numérique du ciem conforme canadien peut - 3 (b) / nmb - 3 (b).

This device meets the exemption from the routine evaluation limits in section 2.5 of RSS 102 and compliance with RSS 102 RF exposure, users can obtain Canadian information on RF exposure and compliance.

cet appareil est conforme à l'exemption des limites d'évaluation courante dans la section 2.5 du cnr - 102 et conformité avec rss 102 de l'exposition aux rf, les utilisateurs peuvent obtenir des données canadiennes sur l'exposition aux champs rf et la conformité.

This equipment complies with Canada radiation exposure limits set forth for an uncontrolled environment.

Cet équipement est conforme aux limites d'exposition aux rayonnements du Canada établies pour un environnement non contrôlé.

This equipment should be installed and operated with minimum distance 20cm between the radiator & your body.

Cet équipement doit être installé et utilisé à une distance minimale de 20 cm entre le radiateur et votre corps.

PMN: Smart Plug