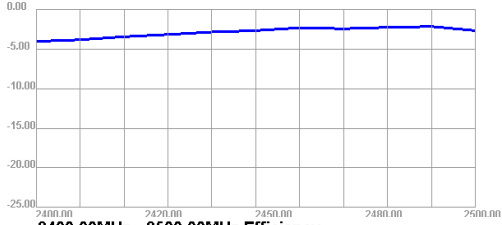


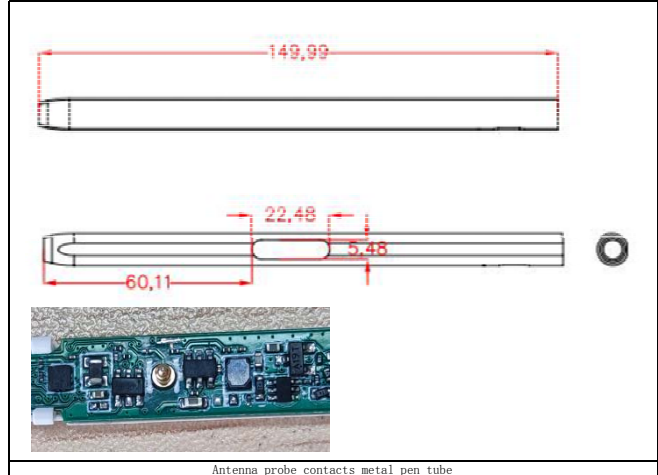
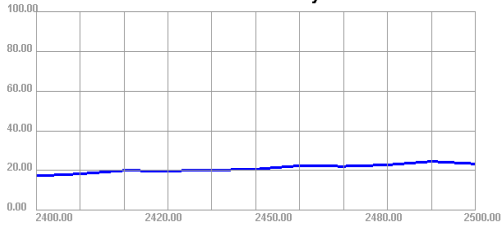
Passive Test For WiFi												
Freq (MHz)	Effi (%)	Effi (dB)	Gain (dBi)	Gain (dBd)	UHS (%)	DHS (%)	Max (dB)	Min (dB)	Directivity (dBi)	Beamwidth (3dB)	AttH (dB)	AttV (dB)
2400	17.32	-7.61	-4.04	-6.19	6.423	10.899	-4.04	-13.41	3.57	30	45.86	45.74
2410	18.39	-7.35	-3.83	-5.98	6.898	11.497	-3.83	-12.94	3.52	30	45.82	45.68
2420	20.05	-6.98	-3.45	-5.6	7.65	12.405	-3.45	-12.07	3.53	30	45.96	45.8
2430	19.9	-7.01	-3.17	-5.32	7.72	12.184	-3.17	-12.51	3.84	60	45.98	45.72
2440	20.21	-6.94	-2.86	-5.01	8.089	12.124	-2.86	-13	4.08	0	45.84	45.6
2450	20.75	-6.83	-2.68	-4.83	8.531	12.215	-2.68	-13.65	4.15	0	45.84	45.57
2460	22.48	-6.48	-2.32	-4.47	9.552	12.93	-2.32	-13.47	4.16	0	45.59	45.36
2470	22.19	-6.54	-2.44	-4.59	9.741	12.444	-2.44	-13.72	4.1	0	45.87	45.61
2480	22.91	-6.4	-2.27	-4.42	10.434	12.477	-2.27	-13.49	4.13	60	45.71	45.54
2490	24.63	-6.09	-2.16	-4.31	11.498	13.134	-2.16	-12.75	3.92	0	46.01	45.89
2500	23.44	-6.3	-2.68	-4.83	11.177	12.259	-2.68	-12.98	3.62	0	46.05	45.93

Application Information	
04Version	5.256.357
TotalTime	4m 34s 767ms
AdditionalInfor	NULL

2400.00MHz - 2500.00MHz Gain

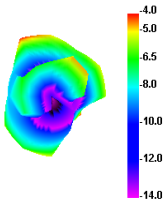


2400.00MHz - 2500.00MHz Efficiency

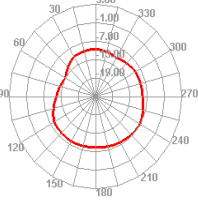


Antenna probe contacts metal pen tube

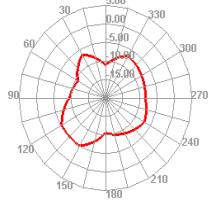
2400.000MHz



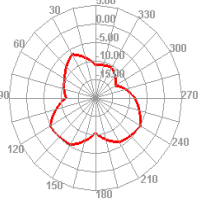
2400.000MHz H



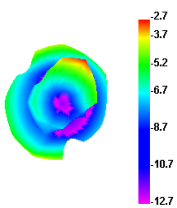
2400.000MHz E1



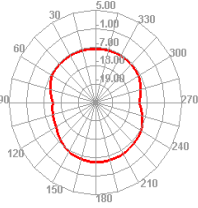
2400.000MHz E2



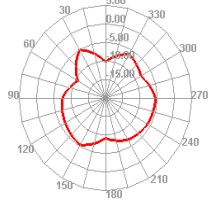
2450.000MHz



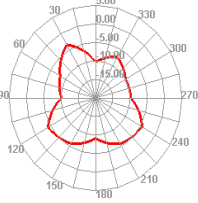
2450.000MHz H



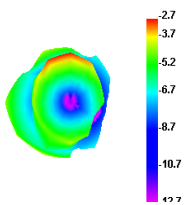
2450.000MHz E1



2450.000MHz E2



2500.000MHz



2500.000MHz H

