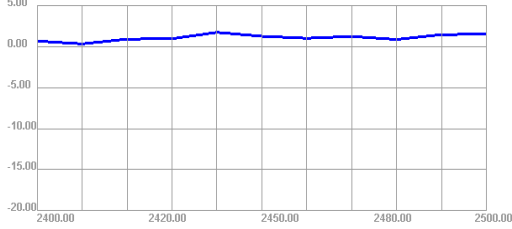


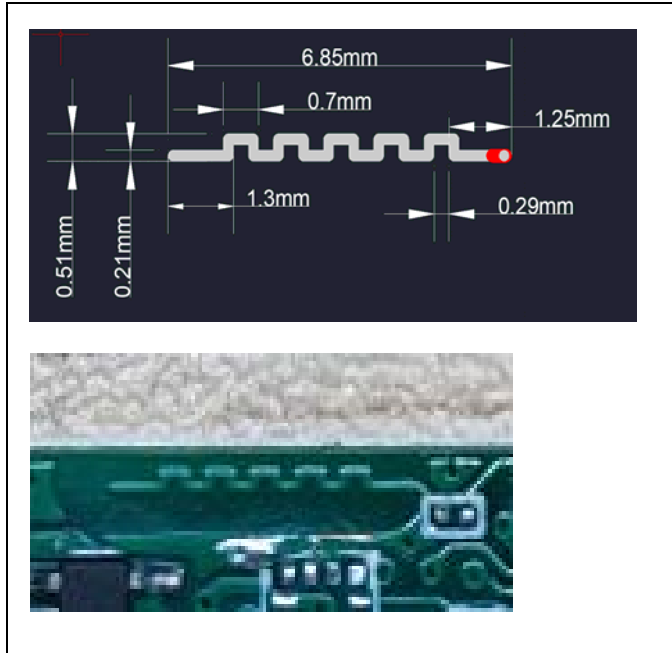
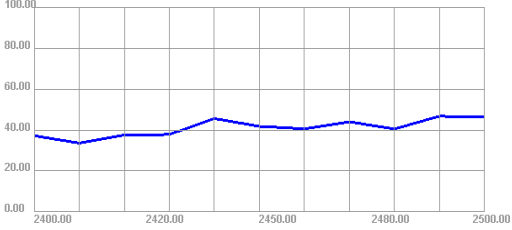
Passive Test For WIFI												
Freq (MHz)	Effi (%)	Effi (dB)	Gain (dBi)	Gain (dBd)	UHS (%)	DHIS (%)	Max (dB)	Min (dB)	irectivity (dBi)	Beamwidth (3dB)	AttH (dB)	AttV (dB)
2400	37.22	-4.29	0.66	-1.49	14.646	22.575	0.66	-14.76	4.96	0	45.86	45.74
2410	33.62	-4.73	0.32	-1.83	13.521	20.098	0.32	-14.3	5.06	0	45.82	45.68
2420	37.62	-4.25	0.9	-1.25	15.537	22.082	0.9	-12.64	5.15	0	45.96	45.8
2430	37.83	-4.22	0.96	-1.19	16.036	21.795	0.96	-12	5.18	0	45.98	45.72
2440	45.61	-3.41	1.72	-0.43	19.86	25.75	1.72	-11.6	5.13	0	45.84	45.6
2450	41.83	-3.79	1.25	-0.9	18.682	23.148	1.25	-12.51	5.04	0	45.84	45.57
2460	40.62	-3.91	1.01	-1.14	18.404	22.217	1.01	-13.1	4.92	0	45.59	45.36
2470	44.02	-3.56	1.23	-0.92	20.058	23.957	1.23	-12.37	4.8	0	45.87	45.61
2480	40.54	-3.92	0.86	-1.29	18.362	22.174	0.86	-12.6	4.78	0	45.71	45.54
2490	46.78	-3.3	1.45	-0.7	20.839	25.937	1.45	-12.34	4.75	0	46.01	45.89
2500	46.3	-3.34	1.52	-0.63	20.372	25.924	1.52	-12.91	4.86	0	46.05	45.93

Application Information	
04Version	5.256.357
TotalTime	5m 11s 894ms
AdditionalInfor	NULL

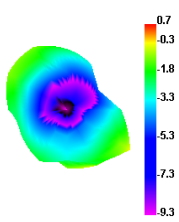
2400.00MHz - 2500.00MHz Gain



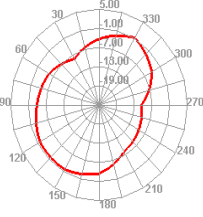
2400.00MHz - 2500.00MHz Efficiency



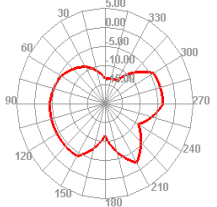
2400.000MHz



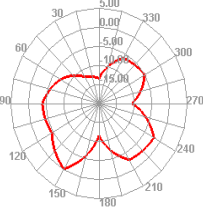
2400.000MHz H



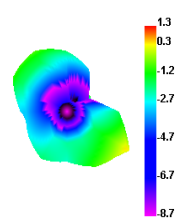
2400.000MHz E1



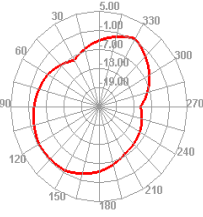
2400.000MHz E2



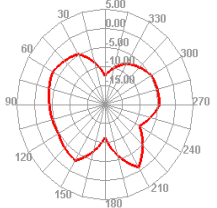
2450.000MHz



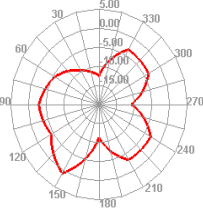
2450.000MHz H



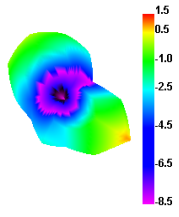
2450.000MHz E1



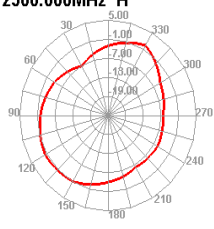
2450.000MHz E2



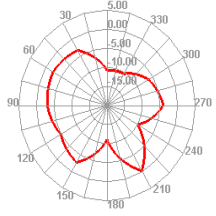
2500.000MHz



2500.000MHz H



2500.000MHz E1



2500.000MHz E2

