

Lampshade installation video

Warm Tips:

Please refer to the corresponding type of lampshade installation, the appearance is not exactly the same, but the installation method is basically the same. Or directly log in to the corresponding type of video URL to view the installation method!



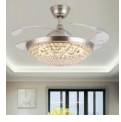
Type A
Video Installation
<https://youtu.be/BLIKDUJ5FJk>



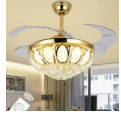
Type B
Video Installation
<https://youtu.be/KHXY9xfriEc>



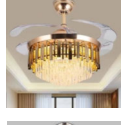
Type C
Video Installation
<https://youtu.be/GZnOmVg0DIk>



Type D
Video Installation
<https://youtu.be/JbrhveiNGA8>



Type E
Video Installation
<https://youtu.be/HY01NrHXmyM>



Type F



Type G

Luxury Fan Lamp

Installation instructions



Type A



Type B



Type C



Type D






Type E

Catalogue


1. Safety precautions before fan installation	1
2. List of accessories	2
3. Installation of hangers	3
4. Installation of suspenders, hanging cups and underside cups	4
5. Installation of hanging balls	5
6. Power line	6
7. Fixed hanging cup	7
8. Installation of lampshades and commissioning	7
9. Type A Lamp Installation Method	8
10. Type B Lamp Installation Method	9
11. Type C Lamp Installation Method	10
12. Type D Lamp Installation Method	11
13. Type E Lamp Installation Method	12
14. Type F Lamp Installation Method	13
15. Type G Lamp Installation Method	14

Warning

	Warning High pressure hazard, non-professional dimension Repair personnel do not open back shell	
<p>Warning: Do not open electric shock Anti-shock warning: Do not open the cover or back shell, which is not available Parts, please consult professional for service.</p>		

 This machine has the end insulation "dangerous high voltage", in order to avoid electric shock non-professional maintenance personnel, Do not remove the lid or rear plate without authorization.

 This machine has this mark safety parts, parts replacement must be in accordance with the original requirements. No use in machine Household self-repair components, need maintenance, please entrust qualified maintenance personnel.

 Note: when the lamp is not on after power supply, please make sure the lamp installation and wiring are correct.

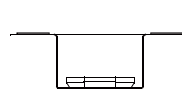
ONE、 Safety precautions for ceiling fans before installation

 **Ceiling fans must be installed by the manufacturer or professional qualified personnel, are not allowed to install.**

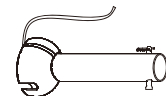
1. Before installing and disassembling the ceiling fan, please turn off the power supply, the installation must be ground wire, zero line, fire line, Disassembly must be in the order of fire line, zero line, ground wire to avoid electric shock.
2. ceiling fan installation, the screws in all parts must be firmly locked.
3. When the ceiling fan rotates, no object should touch the blade to avoid danger.

1

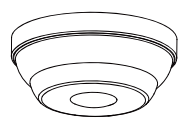
TWO、 List of accessories



① Hangerx1



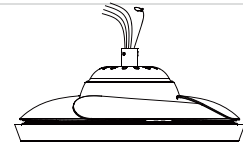
② Suspenderx1



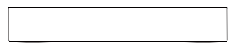
③ Hanging cupx1



④ Decorative cupx1



⑤ Main body of motorx1



⑥ Lampshadex1



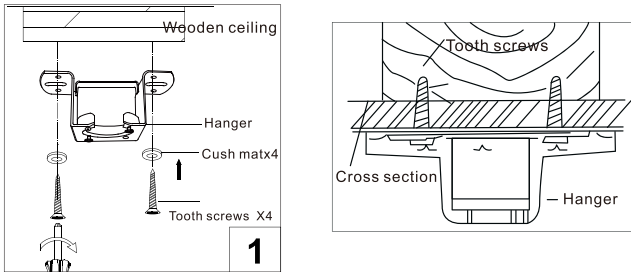
⑦ Remote controlx1 ⑧ Screw Accessoriesx1 ⑨ Driverx1

* Note: If there is no shortage, install

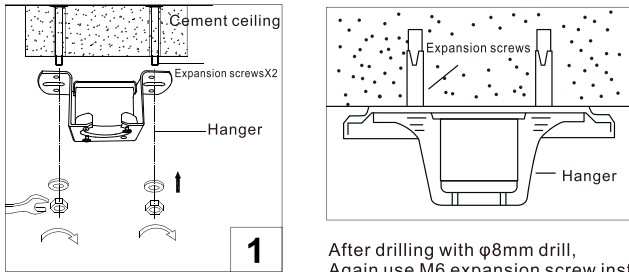
2

THREE、 Installation of hangers

1. mounted on wooden ceiling board, drill the hanger on wooden square or beam with wooden tooth screw. (Wood ceiling thickness not less than 10 mm)



2. Use 8 mm impact drill bit to drill 50 mm depth for concrete ceiling, then use lamp fitting The expansion screw in the bag fixed the hanger to the ceiling.



After drilling with $\phi 8\text{mm}$ drill,
Again use M6 expansion screw installation.

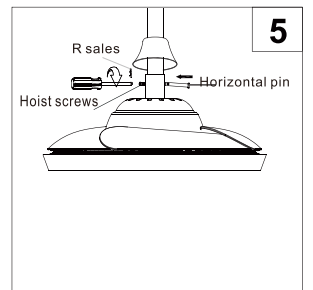
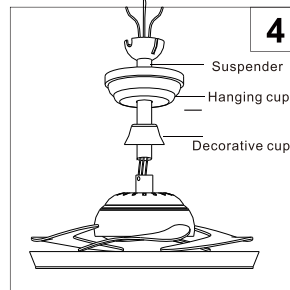
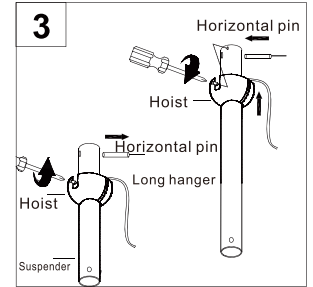
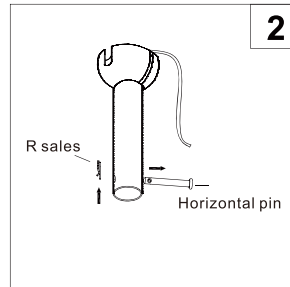


1. to ensure that it is fixed and reliable, please follow the above instructions when installing different ceiling materials Corresponding fixed screws.
2. if wooden ceiling is used as mounting surface, make sure that the plank thickness is not less than 10 mm, Bearing capacity not less than 30 kg.

FOUR、 Installation of suspenders, hanging cups and underside cups

※ Suspender

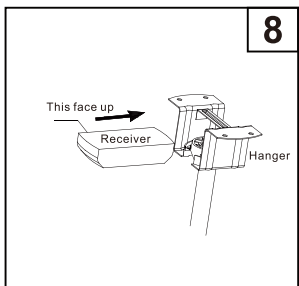
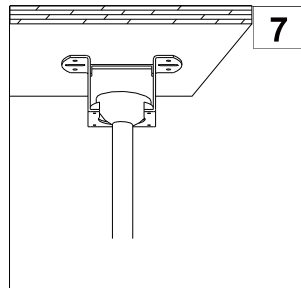
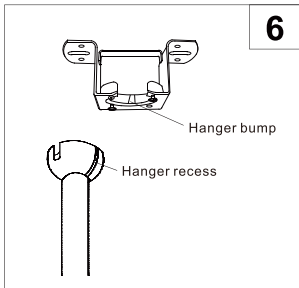
1. Select the appropriate length of the suspender according to the height of the ceiling board; this ceiling fan is equipped with a suspender length of 5 inches, if not in accordance with the use of the suspender Please contact our company for other sizes of suspenders, replacement suspenders, suspenders replacement as shown in steps 2,3.



Note: to prevent damage to human body or other objects, please ensure that the fan blade is installed The distance from the ground is not less than 2.3 meters.

FIVE Installation of the hanging ball

1. put the ball from the opening position, rotate and adjust the hanger, so that the groove and hanger (in the hanger) on the ball The convex groove on the inner surface is meshed.



2. The receiver is installed to the hanger as shown in 8 and the wiring is arranged.

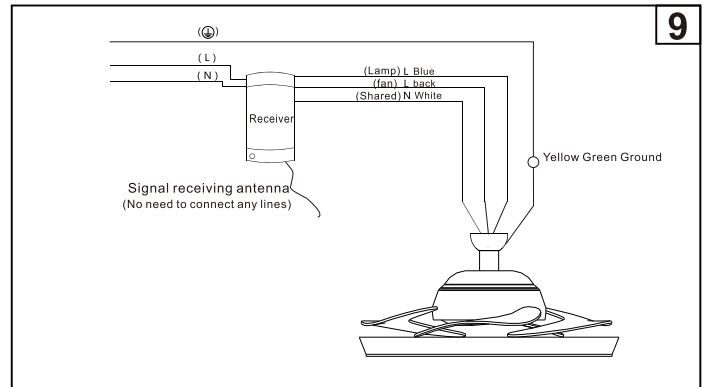
SIX Connect the power line

1. According to step 9 wiring mode, the remote control is equipped with wiring cap for wiring use.



Note: Power supply lines with fixed wiring shall be at least 3 mm from the installation point Power switch must be turned off before installation to prevent electric shock!

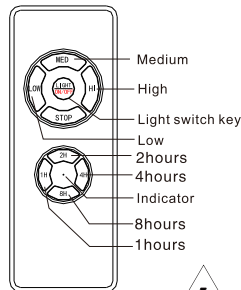
※ Warning: the In line of the product must correspond to the electric In line when installed, otherwise it will cause abnormal luminescence.



2. The receiver is plugged in with the power cord, as shown in step 9.

SEVEN Remote control instructions

1. Remote control key



2. basic function

Light switch key: yellow light / white light / full light

Fan control key: LOW/MED/HI and STOP

Indicator light: press each key, the indicator light of remote control will be on.

Note: The product can be operated by remote control directly when it leaves the factory, if it is replaced Recorder or remote control one of which is damaged or replaced must beremote and connected The receiver can be replaced together before it can be used

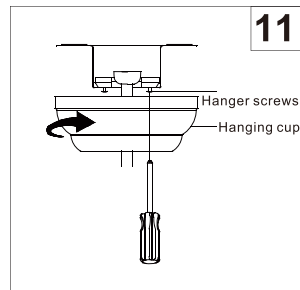
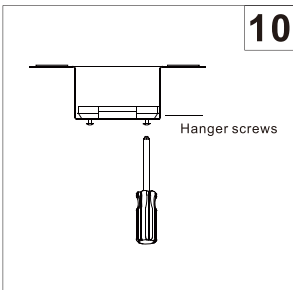
Please install the battery correctly before use

The light source in this lamp shall be replaced by the manufacturer or its service agent or a person of similar qualification Warning, electric shock danger!



EIGHT Fixed hanging cup

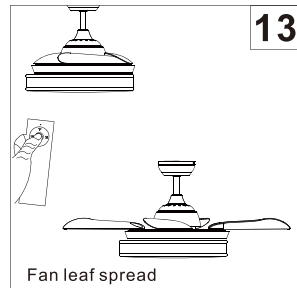
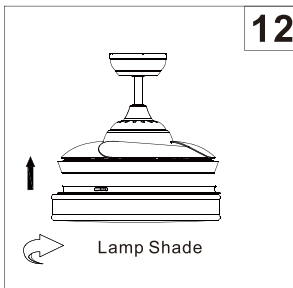
1. Align the cup notch to the screw on the hanger, then lift the cup up so that the screw passes through the cup notch, Then rotate from right to left, and fasten the two screws of the cup with screwdriver. as shown in step 11.



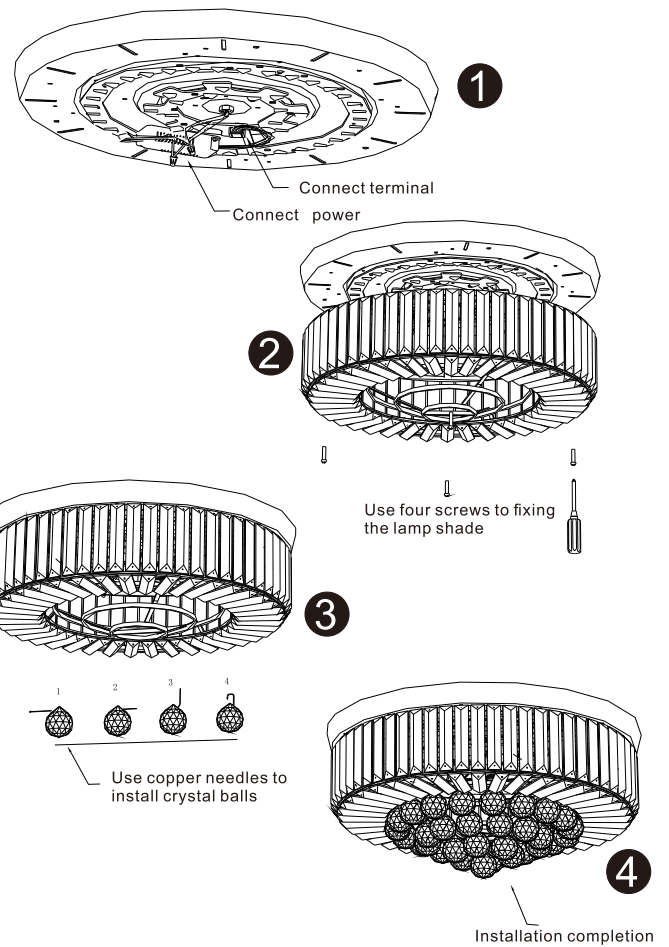
NINE Installation of lampshades and commissioning

- The position of the bayonet on the lampshade is fastened to the upper motor lamp plate clasp, as shown in figure 12.
- Install the battery on the remote control and debug the remote control as shown in step 13.

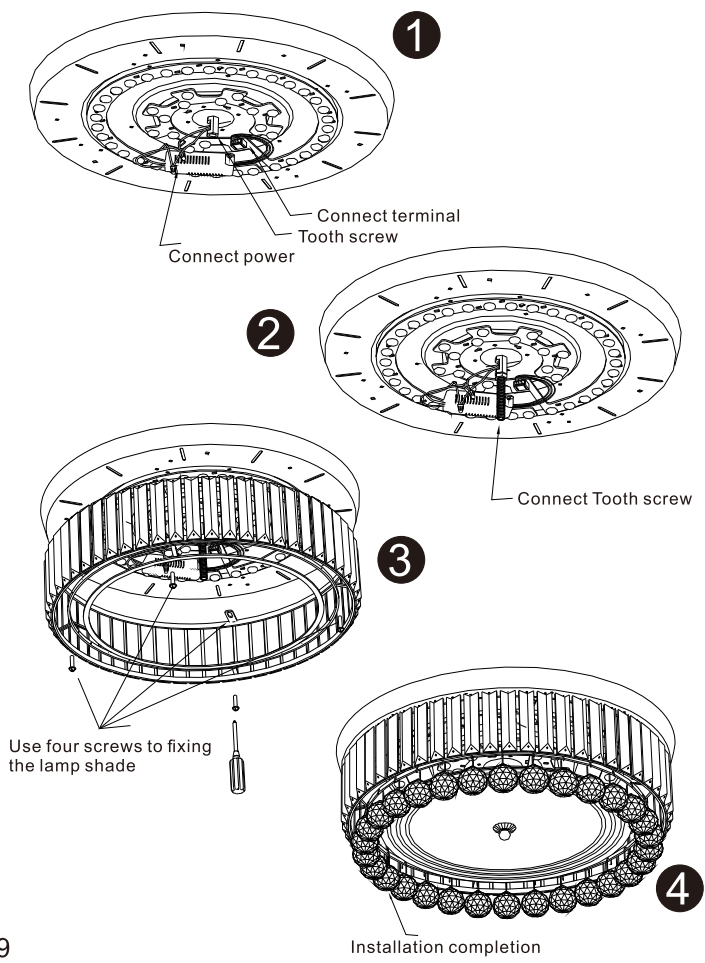
! Note: when the host is powered on, the receiver sends out a "beep" to indicate that the signal has been received, wind After the fan starts, the fan will open itself, the person should be 1.5 meters away from the boot to prevent fan damage



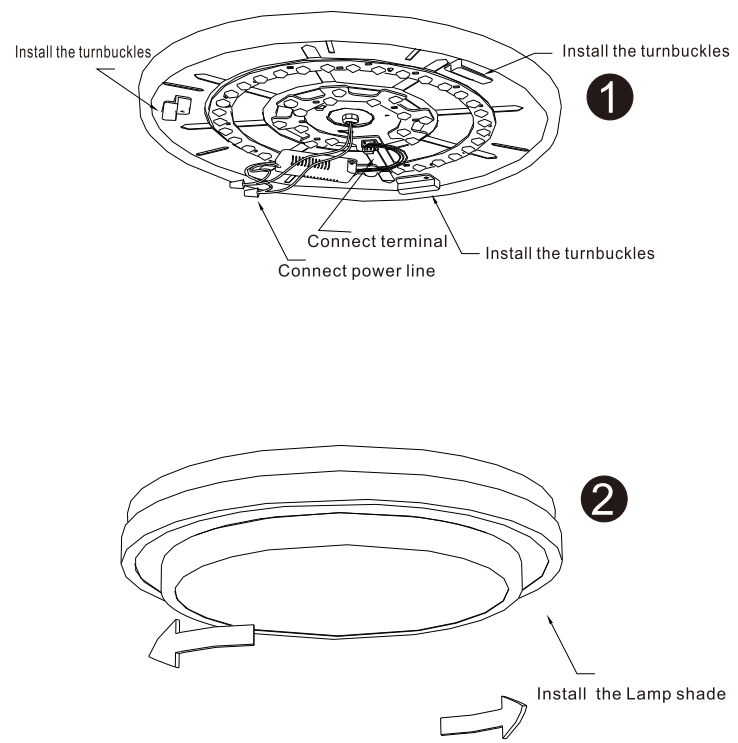
Type A



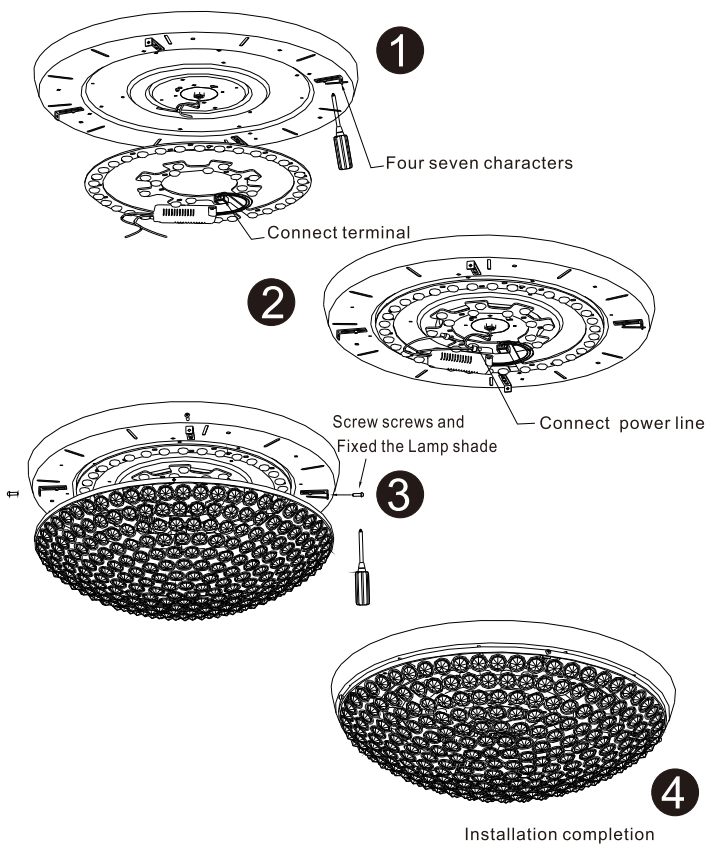
Type B



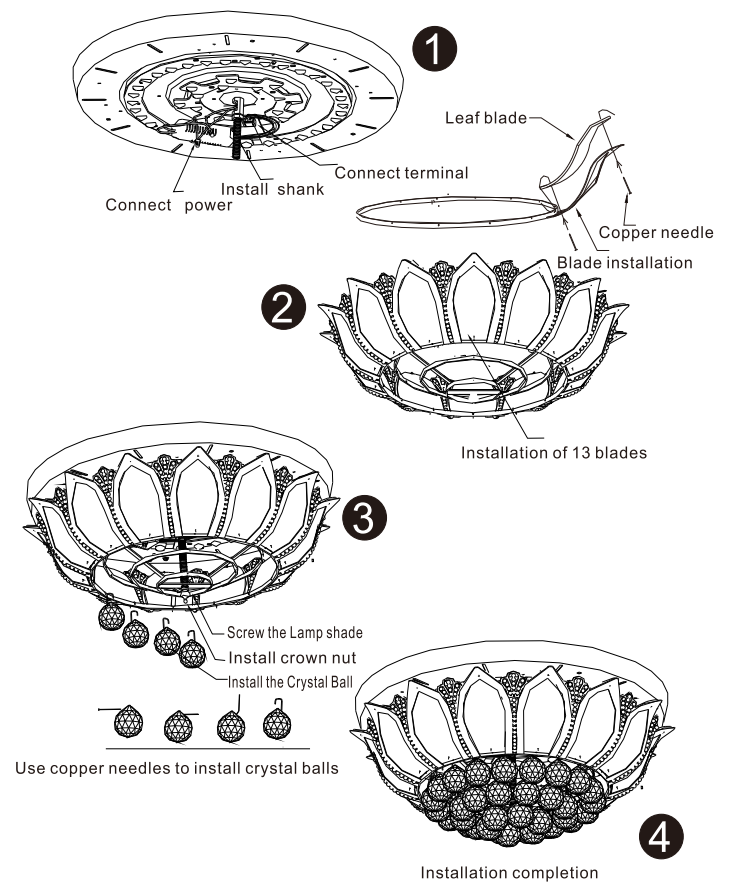
Type C



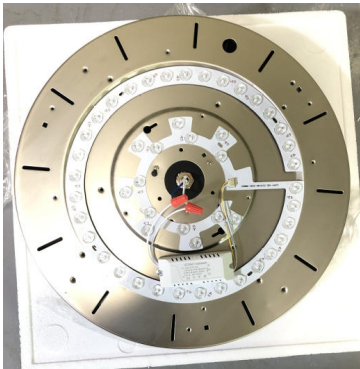
Type D



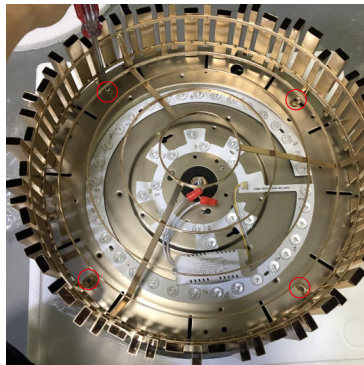
Type E



Type F



1 Connect terminal
Connect power



2 Use four screws to fix the lamp shade

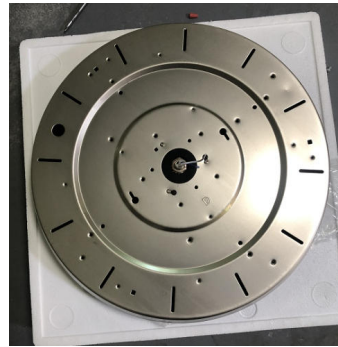


3 Use copper needles to install crystal balls

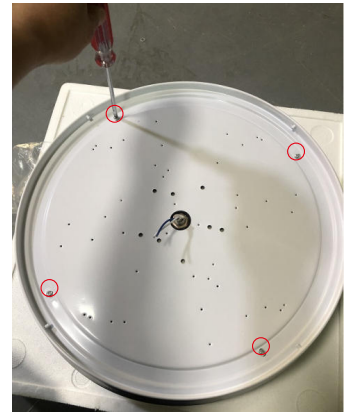


4 Installation completion

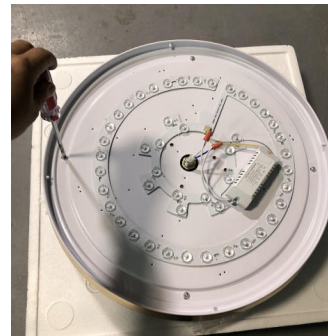
Type G



1 Motor assembly



2 Install the white iron plate



3 Install LED light source



4 Install the Lamp shade

This equipment has been tested and found to comply with the limits for a Class B digital device, pursuant to part 15 of the FCC Rules. These limits are designed to provide reasonable protection against harmful interference in a residential installation. This equipment generates, uses and can radiate radio frequency energy and, if not installed and used in accordance with the instructions, may cause harmful interference to radio communications. However, there is no guarantee that interference will not occur in a particular installation. If this equipment does cause harmful interference to radio or television reception, which can be determined by turning the equipment off and on, the user is encouraged to try to correct the interference by one or more of the following measures:

- Reorient or relocate the receiving antenna.
- Increase the separation between the equipment and receiver.
- Connect the equipment into an outlet on a circuit different from that to which the receiver is connected.
- Consult the dealer or an experienced radio/TV technician for help.

Caution: Any changes or modifications to this device not explicitly approved by manufacturer could void your authority to operate this equipment.

This device complies with part 15 of the FCC Rules. Operation is subject to the following two conditions: (1) This device may not cause harmful interference, and (2) this device must accept any interference received, including interference that may cause undesired operation.

RF Exposure Information

This equipment complies with FCC radiation exposure limits set forth for an uncontrolled environment. This equipment should be installed and operated with minimum distance 20cm between the radiator and your body.