

H7184 英文 说明书

版本：1.0

成型尺寸：145×210 (mm)

材质：80G书页纸

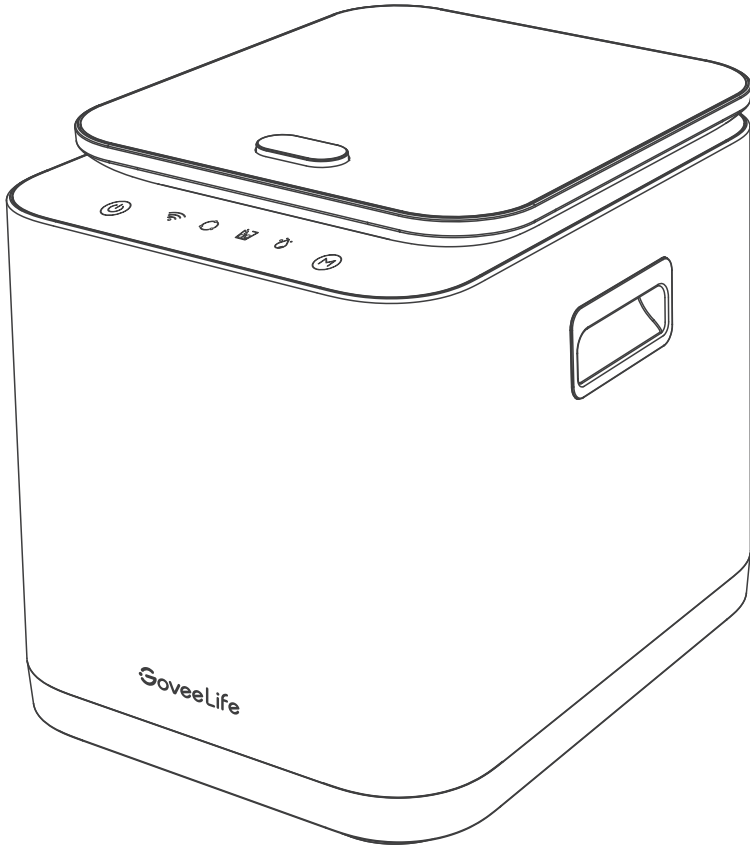
工艺：单色印刷

折叠方式：骑马钉

页数：28页

**GoveeLife**

Model:H7184



# User Manual

Smart Kitchen Composter



# Contents

<b>Important Safety Instructions</b>	<b>01</b>
<b>Included in the Box</b>	<b>02</b>
<b>Introduction</b>	<b>03</b>
<b>Operation</b>	<b>08</b>
<b>Govee Home App</b>	<b>14</b>
<b>What Can I Put in My Smart Kitchen Composter</b>	<b>15</b>
<b>How to Care for the Smart Kitchen Composter</b>	<b>16</b>
<b>Changing Filters</b>	<b>18</b>
<b>Troubleshooting</b>	<b>19</b>
<b>Appendix</b>	<b>22</b>

# Important Safety Instructions

- Please read all accompanying instructions before your first use of the product.
- Do not touch any internal surfaces of the device. Move the device with the built-in handles if necessary.
- Make sure all electrical components are kept away from water or other liquids to protect against electrical shocks.
- Close supervision is necessary when the product is used by or near children.
- Always unplug the unit when not in use. When adding/removing parts (e.g. filter or the bucket), also make sure the unit is unplugged.
- When clearing a jam, do not use your hands or fingers, and always make sure that the device is turned off and unplugged.
- Do not operate the device if the cord or plug is damaged. Similarly, do not operate if the device malfunctions or is dropped or damaged. Please contact our Govee support team for examination or repair.
- Do not use any attachments not recommended or sold by GoveeLife as these could damage the device.
- The product is intended for household use only. Do not use it outdoors.
- Do not let the electric cord hang over the side of a counter or table or touch hot surfaces.
- Do not place the device on or near a hot gas or electric burner or in a heated oven.
- Keep the unit out of direct sunlight and away from any appliances which produce heat.
- Make sure that the device sits on a flat surface when in operation. To allow proper air flow, make sure to place the device at least 6 inches away from all walls and in a well ventilated space.
- When the device is not in use, always make sure the lid remains closed to prevent items from falling into it.
- Do not use the device for anything other than its intended use and do not alter or adapt in any way.
- Do not immerse in water.
- Do not place any non-food kitchen waste (e.g. metal, ceramic etc.) into the device to avoid damage.
- Be careful not to drop or knock the bucket. Otherwise, the distortion might affect the normal use.
- To avoid entrapment hazard, do not touch the grinding blades when it is moving. Do not press the Composting Button when the bucket is empty. Do not remove the bucket and touch the grinder when it is moving.

## PLEASE SAVE THESE INSTRUCTIONS

### Power Cord & Plug

- A short power-supply cord is provided to reduce risks resulting from becoming entangled in or tripping over a longer cord.
- Do not use longer detachable power cords or extension cords, which may lead to poor contact or cause them to melt.

- If a long detachable power-supply cord or extension cord is used:
  - a. The marked electrical rating of the detachable power-supply cord or extension cord should be at least as great as the electrical rating of the appliance.
  - b. This smart kitchen composter has a 3-prong grounding plug. Any extension cord should be a grounding type 3-wire cord.
  - c. The longer cord should be arranged so that it will not drape over the countertop or table top where it can be pulled on by children or tripped over.
- Never use the cord as a handle or otherwise yank, strain or stretch the power cord. Do not allow the cord to touch hot surfaces.
- Place the device near the plug, so that it can be unplugged immediately from power if an emergency occurs.
- Do not operate this device with a damaged cord or plug. Discard the device or return to an authorized service facility for examination and/or repair.
- Do not cover the cord with throw rugs, runners, or similar coverings. Do not route the cord under furniture or appliances. Arrange the cord away from high traffic areas and where it will not be tripped over.
- If the power cord or plug is damaged, please contact customer service or similar professionals for repairs to avoid danger.

**Note:** If the electrical circuit is overloaded with other appliances, the device may not operate properly. Operate it on a separate electrical circuit

## Risk of Electric Shock & Leakage

- Do not insert any foreign objects in the air inlet or outlet when the device is powered on, as this may damage the device itself and cause electric shock or fire.
  - If any part of the device is damaged in operation, contact customer service or professionals for repair or replacement. Do not risk repairing or replacing by yourself.
- WARNING:** To reduce the risk of electric shock, do not expose the device to water or rain.

**CAUTION:** To provide continued protection against risk of electric shock, connect to properly grounded outlets only.

**CAUTION:** For protection against the risk of electric shock, do not put metal containers or utensils in this appliance.

## Included in the Box

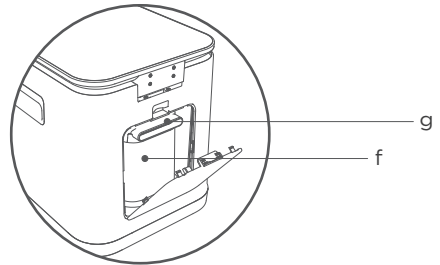
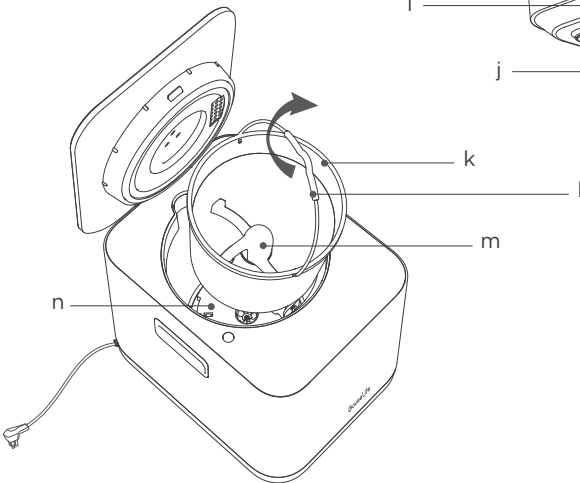
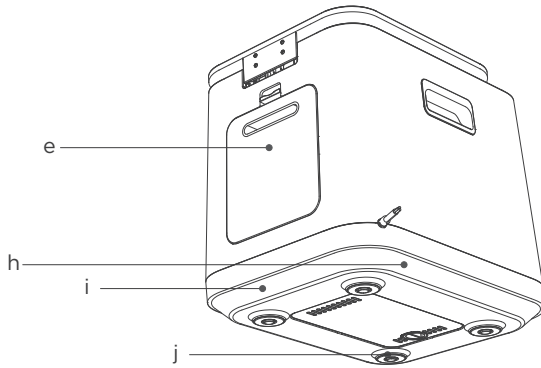
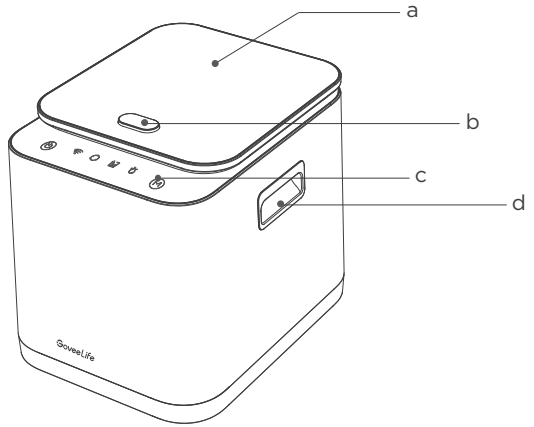
Item	Quantity
Smart Kitchen Composter	1
Bucket	1
Activated Carbon Filter Module	1
Back Cover	1
User Manual	1
Quick Start Guide	1

# Introduction

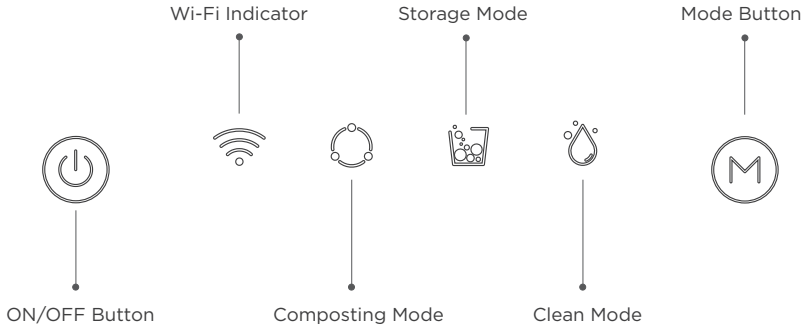
This Smart Kitchen Composter is specially designed to transform and compress kitchen waste. It is electric and designed for indoor use, making it easy to compost food scraps on your countertop.

## Part Names

- a. Lid
- b. Lid Release Button
- c. Control Panel
- d. Built-in Handle
- e. Back Cover
- f. Activated Carbon Filter
- g. Filter Outlet Module
- h. Light Diffuser
- i. RGB Light
- j. Non-slip Pad
- k. Bucket
- l. Bucket Handle
- m. Grinder
- n. Heating Plate



# Controls



## ON/OFF Button

**Standby:** When the device is plugged into power and the product is in standby mode, the indicator will light up and turn off gradually.

**Powered-on:** When you touch the ON/OFF button, the ON/OFF Button and Mode Button will turn solid. At this time, you can touch the Mode Button to switch and select different modes.

**Note:** When a mode is operating, you can cancel the mode by pressing and holding the ON/OFF Button for 3s. At this time, the ON/OFF Button and the Mode Button are solid. Touch the Mode Button to switch to a new mode. It will automatically enter the standby mode after 15 seconds without operation. In the standby mode, the ON/OFF Button's indicator will flash slowly and the Mode Button's indicator will go out.

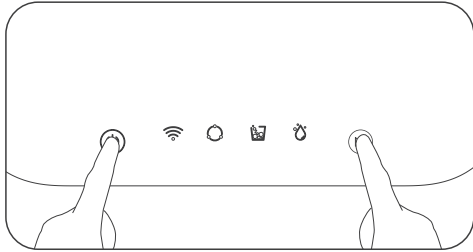


## Mode Button





**Running at the selected mode:** After the product enters the powered-on state, touch the Mode Button. The mode indicator will light up. The mode will cycle through Composting, Storage, and Clean for each touch. The indicator light of the selected mode will remain solid after flashing for 3 seconds to confirm that this mode has started running.



Restore to Factory Settings: When the device is in the standby mode or is running any other mode, press and hold the ON/OFF Button and the Mode Button for 5s simultaneously. All buttons and indicators will light up for 1s and the device will be restored to factory settings.



## Control Panel Indicators

Indicator	Status
 Wi-Fi Indicator	Displays the network connection status of the device. Note: 1. Device network is successful connected: The indicator remains solid during operation. When the device is reconnecting to the network in the standby status, the indicator lights up for 2 seconds and then goes out. 2. Device is pairing with the app and needs confirmation: Flashes 3. Device failed to connect to the network or is disconnected: Off
 Composting Mode	1. In standby mode: Off 2. Composting Mode is selected: Flashes 3s 3. Composting Mode is running: Remains solid
 Storage Mode	1. In standby mode: Off 2. Storage Mode is selected: Flashes 3s 3. Storage Mode is running: Remains solid
 Clean Mode	1. In standby mode: Off 2. Clean Mode is selected: Flashes 3s 3. Clean Mode is running: Remains solid

Note:

1. There will be voice announcements when the product is powered on, the mode is starting, the treatment is moving to the next link or when an exception occurs. You can choose to turn on/off the voice announcement in the app.
2. Exception Alerts: If the indicators of Composting Mode, Storage Mode, and Clean Mode are flashing circularly, and the voice broadcasts the classification of the product exception, please contact Govee customer service.

## RGB Light Status

Mode	Status
Composting Mode (Drying Process)	Orange Light
Composting Mode (Mixing Process)	Green Light
Composting Mode (Cooling Process)	Blue Light
Storage Mode	Warm Yellow Light
Clean Mode	Cyan Light
Night Light Mode	Turn the night light on or off in the app. Once turned on, the night light's lighting effects will replace the indicator lighting effects. You can set the lighting effects in the app.

## Functions

### Composting Mode

In this mode, the food waste will be processed. The entire mode includes three steps: Drying, Mixing, and Cooling. Depending on the type and weight of food waste that put in, the running time will vary automatically. Drying  $\leq$  3 hours, Mixing  $\leq$  3 hours, and Cooling  $\leq$  1 hour.

Note:

1. The processing times listed above may vary depending on the weight and type of food to be processed. The ranges provided are averages based on our internal testing and are for reference only.
2. When running in this mode, you can temporarily open the lid to add some food waste if the mode has started working for less than 15 minutes. It is recommended not to open the lid unless necessary because it might affect the result of the food waste processing. Be careful not to open the lid for more than 1 minute and be careful of hot surfaces after opening the lid. Close the lid within 1 minute and the machine will continue the current

mode. If the lid is opened for more than 1 minute, the mode will end and the device will enter the standby state. In addition, if you open the lid after the composer is running for 15 minutes, the current mode will not continue considering that the final result might not be ideal. You need to restart the Composting Mode. If there is an overheating alert, you must wait until the bucket has cooled down, then you can restart the mode. If the lid is opened for more than 1 minute, the mode will end and the device will enter the standby state. In addition, if you open the lid after the composer is running for 15 minutes, the current mode will not continue considering that the final result might not be ideal. You need to restart the Composting Mode. If there is an overheating alert, you must wait until the bucket has cooled down, then you can restart the mode.

## **Storage Mode**

In this mode, the device will store the newly added food waste and the waste that has been processed before. In this mode, the food waste will be stirred and some odors will be discharged at intervals.

Note:

1. You need to set the starting and ending time of this process.
2. When running in this mode, you can temporarily open the lid to add some food waste. Be careful not to open the lid for more than 1 minute. Close the lid within 1 minute and the machine will continue the current mode. If the lid is opened for more than 1 minute, the mode will end and the device will enter the standby state.

## **Clean Mode**

After taking out the processed food waste, fill the bucket with an appropriate amount of water (below the MAX line) and turn on the Clean Mode to perform the pre-cleaning. After cleaning, take out the bucket, pour out the water and then rinse with cold water.

Note:

1. The total running time of this mode is about 60 minutes.
2. When running in this mode, you can temporarily open the lid to add some water. Do not open the lid unless necessary. Be careful not to open the lid for more than 1 minute. Additionally, be careful of hot surfaces after opening the lid. Close the lid within 1 minute and the machine will continue the current mode. If the lid is opened for more than 1 minute, the mode will end and the device will enter the standby state.

## **RGB Light**

1. When any of the three modes is running, the corresponding indicator will light up. You can turn it off in the app.
2. In addition, you can turn on the night light effect in the app. After turning on, it will replace the indicator lighting effects. You can set the lighting effects in the app.

## Memory Function

The composter will save its previous settings when powered off. When it is powered back on, the settings will resume.

## Smart Function

Connect this composter to Govee Home App via Wi-Fi or Bluetooth to enjoy remote control, schedule function, and light settings.

## Misplacement Reminder

When the lid is closed, the device will detect whether the bucket has been properly placed. If not, the device will inform you via indicators, voice announcements, and app notifications. After putting the bucket correctly, restart the program.

## Device Protection

Corresponding alerts and protections are provided when there is a jam in the grinder, the bucket is overheating, the NTC fails, the heating components fail, or the lid is opened which causes a shutdown.

## Activated Carbon Filter

It is used for absorbing odors during operation. Please replace the filter regularly according to the amount and the smell of food processed.

## Voice Announcement

The product has a voice announcement function to remind you when the product is powered on, program is started, process moves on, mode is completed, mode is interrupted, when an exception occurs, etc.

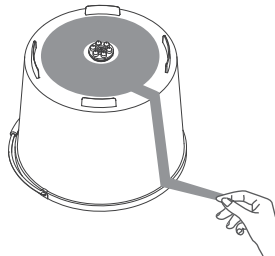
# Operation

## Getting Started

### Initial Setup

1. Remove all packaging.

Remove the protective films on the lid and the control panel if necessary.

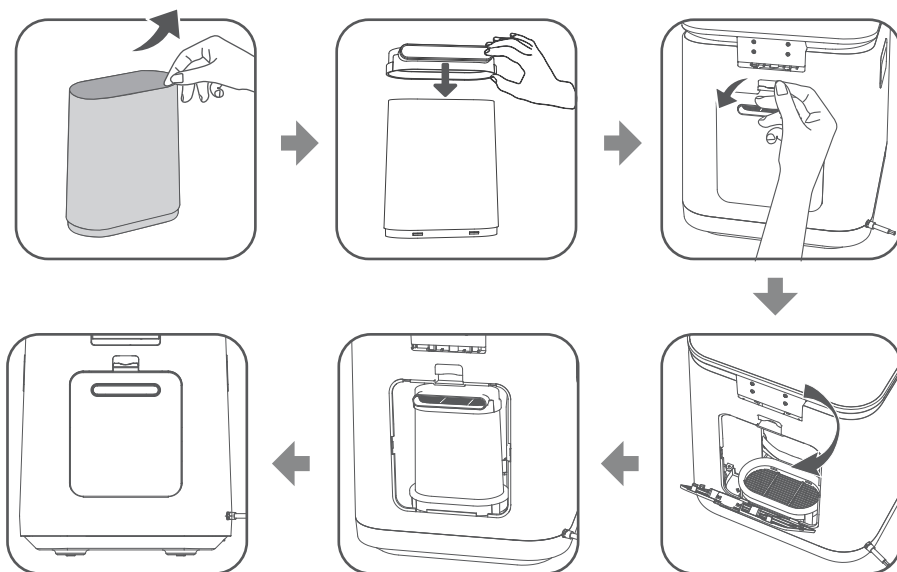


2. Place the kitchen composter on a flat, dry, stable surface.

Make sure the composter is at least 6 inches (15cm) from all walls and in a well ventilated area to ensure proper ventilation.

3. Install the activate carbon filter.

Remove the protective film from the activated carbon filter. Assemble the filter air outlet module on the smallest surface of the filter. Open the back cover of the composter and place the activated carbon filter into place with the larger surface facing down. Close the back cover to complete the installation. Make sure the air outlet aligns with the hole on the back cover.



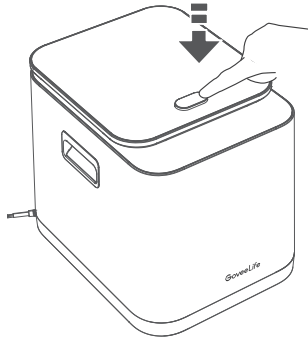
4. Make sure the bucket is placed properly and the lid is in place. Then plug into power.

# Using Your Smart Kitchen Composter

It is recommended to unplug the composter and remove the bucket from the unit before adding any waste.

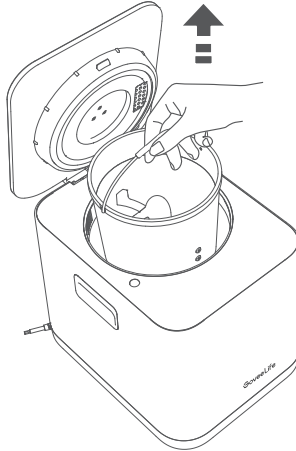
## 1. Open the Lid

Press the lid release button to open the lid. Due to the spring design of the lid, be careful when pressing the button.



## 2. Take Out the Bucket

Pull out the bucket with the bucket handle.

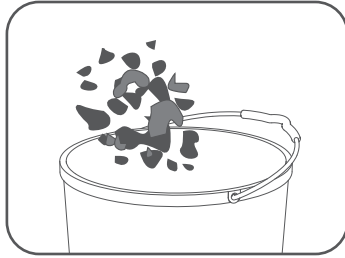


## 3. Add Food Waste to the Bucket

As for the details of food waste, please refer to the “What can I put in my kitchen composter?” section.

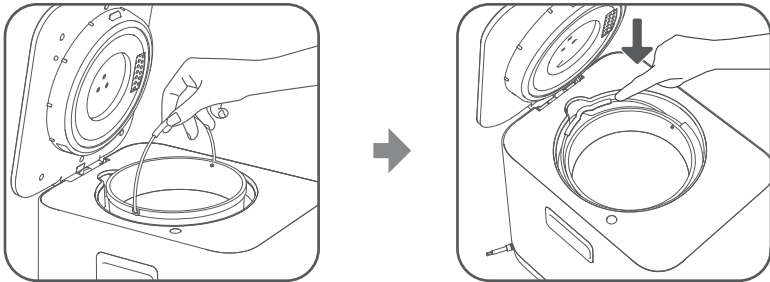
- Put the waste into the bucket gently.
- Cut waste into smaller pieces if necessary.

- Do not exceed the MAX line when adding food waste. It is recommended to add not more than 75% of the MAX line.
- It is recommended to add 300g or more waste for each composting. Otherwise, it will not obtain the optimal effect and the waste inside the bucket could turn sticky and scorched.



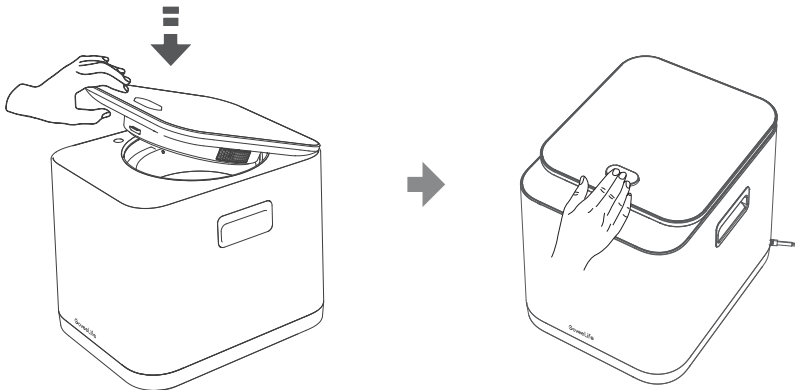
#### 4. Place the Bucket Back

Pay attention when placing the bucket. The bucket handle needs to be placed horizontally and the protruding part of the handle should align with the groove. If the bucket does not fit into place, slightly turn the grinder on the bucket's bottom and try again.



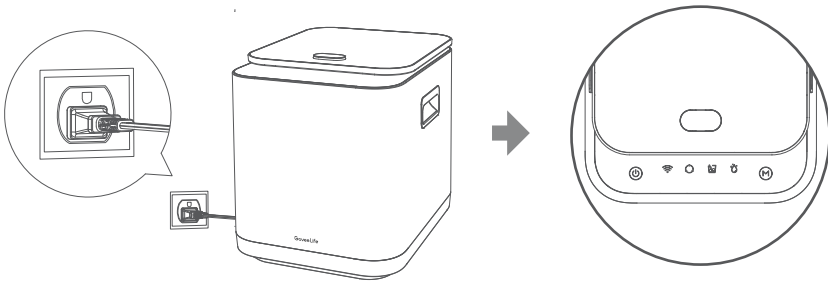
#### 5. Close the Lid

Make sure the lid is closed properly and will not pop up.



## 6. Plug into Power

The indicator of the ON/OFF Button will light up and there will be a voice announcement reminding you to press the ON/OFF Button to turn on the device.



## 7. Press the ON/OFF Button to Turn on the Composter

After turning on the composter, the indicator of the Mode Button will light up. Touch to select a mode. For the first use, it will be the Composting Mode by default. Touch the Mode Button to switch the mode if necessary. When a mode is selected, the corresponding indicator will flash for 3s and remain solid to confirm the start of the operation. At the same time, there is a voice announcement indicating the process has started.

Note: See “Controls” section for more operations.

## 8. Operation Completed

When the composter is running in the selected mode, the bottom light will display the corresponding color (see “Bottom Light Status Instructions”). When the process is completed, the bottom light will turn off. At the same time, there is a voice announcement indicating the process has ended.

Note:

1. The Composting Mode consists of three links including Drying, Mixing, and Cooling. The bottom light's color will change in different links (see “Bottom Light Status Instructions”). At the same time, there will be a voice announcement indicating the mode switching.
2. You can turn on the night light or set other lighting effects for the bottom light in the app (check “Lighting Effect Settings in the App”).



# Tips for Performance

1. The greater the variety of fruits and vegetables in your food waste and scraps, the better the end product your composter will produce.
2. Have an even mix of light and heavy food scraps interspersed.
3. Do not leave your unprocessed waste for a long period of time (e.g. over a week). Run the Composting Mode once when necessary.
4. Tuck the bioplastic materials on the sides of the bucket rather than just place them on top.
5. Avoid large amounts of dense or moisture-rich composition foods such as condiments and high sugar fruits.
6. Use the smart kitchen composter to improve waste breakdown, increase biotic content and further suppress odors.

# Smart Alerts

Status	Indicator	Display	Voice Announcement
The bucket is not placed in the composter or placed properly.	Composting/Storage/Clean	Keeps flashing	Yes
Bucket is stuck during operation.	Composting/Storage/Clean	Keeps flashing	Yes
Bucket is overheating	Composting/Storage/Clean	Keeps flashing	Yes
The heating plate is not working properly.	Composting/Storage/Clean	Flashes circularly	Yes
NTC error display	Composting/Storage/Clean	Flashes circularly	Yes

# Govee Home App

You can access more features using Govee Home App.

## Downloading Govee Home App

To download Govee Home App, scan the QR code or search for “Govee” in the Apple App Store\* (iOS) or Google Play Store (Android).



Govee Home App



### Note:

- Choose “Allow” to the permissions requested when opening Govee Home App for the first time. These permissions allow the app’s features to function normally and are not used to record personal, private information.
- Due to ongoing updates, Govee Home App may be slightly different than shown in this manual. In case of any differences, always follow the in-app instructions.

## Pairing with Govee Home App

1. Turn on your smartphone’s Bluetooth.
2. Open Govee Home App, touch the “+” icon in the top right corner and search for “H7184”
3. Touch the device icon and follow the in-app instructions to press the ON/OFF Button to complete pairing.

### Note:

- Method to turn off Bluetooth and Wi-Fi connection: Press and hold the ON/OFF Button and Mode Button for 5 seconds to restore the device to factory settings. For the next device connection, please make sure to delete the device on the app.
- You can use Govee Home App to connect your kettle to Amazon Alexa or Google Assistant, Follow their-app instructions to connect to each voice assistant.
- Govee Home App is being continually updated and its features expanded.

## For App & Connectivity

1. Cannot connect to Govee Home App.
  - Make sur the Bluetooth of your smartphone is enabled and your smartphone is notconnected with other Bluetooth devices.
  - Enable the smartphone’s Location Services.
  - Try connecting with another smartphone.

- Make sure your app is the latest version.
  - Make sure you connect to your Wi-Fi router's 2.4GHz network and the network is Working correctly.
  - Make sure the Wi-Fi password you entered is correct.
  - Shorten the distance between the kettle, Wi-Fi router, and the smartphone.
  - Make sure your kettle and the Wi-Fi router are located away from appliances that produce electromagnetic radiation (e.g. microwave ovens, refrigerators, etc.).
  - If you are using a VPN, try turning it off and then connecting the kettle.
  - Disable portal authentication for your Wi-Fi network. If portal authentication is enabled, this kettle will not be able to access your Wi-Fi network, and setup will fail. Portal authentication means that you need to sign in to your Wi-Fi network through a web page before you can use the Internet.
2. Cannot find the device on the Bluetooth Device Nearby page of the app.
- The kettle may be connected with another smartphone. Disconnect it from the other smartphone first.
3. The kettle is offline.
- Make sure the kettle is plugged in and powered on, then refresh "My Devices" in GoveeHome App by swiping down on the screen.
  - Make sure your router is connected to the internet and your smartphone's network connection is working.
  - If the Wi-Fi password has been changed, the kettle will automatically go offline. Try connecting it to the network again.
  - Delete the offline kettle from Govee Home App, then add and reconfigure the kettle again in the app.

## What Can I Put in My Smart Kitchen Composter?

In Composting Mode and Storage Mode, you can put in food waste. A diverse mixture of food waste will allow the composter to give the best results. See below for what can and cannot be put in the kitchen composter.

Dos	Dont's
<ul style="list-style-type: none"> <li>● Fruit and vegetable scraps (without pits)</li> <li>● Food leftovers, plate scrapings (filter the excessive oil)</li> <li>● Meat scraps (cut into small pieces)</li> <li>● Soft bones (fish)</li> <li>● Soft shells (eggs, shrimp)</li> <li>● Coffee filters, grounds, and tea bags</li> </ul>	<ul style="list-style-type: none"> <li>● Hard bones (chicken, beef, pork, lamb)</li> <li>● Cooking oils, grease, liquids (Note: Supports adding water in the Clean Mode)</li> <li>● Fruit pits (avocados, peaches, apricots, nectarines, mangoes)</li> <li>● Soaps, shampoo and conditioner bars</li> </ul>

- |   |  |
|---|--|
| <ul style="list-style-type: none"> <li>● Soft peels</li> <li>● Rinds (watermelon, melon)</li> <li>● Nuts</li> <li>● Starches (bread, pasta, rice, potatoes, cereals, oats and other grains)</li> <li>● Dairy products (cheese, yogurt)</li> <li>● Houseplants, plants and flowers</li> <li>● Yard trimmings (leaves)</li> </ul> | <ul style="list-style-type: none"> <li>● Lined bags (chips, cookies, pet food)</li> <li>● Soiled diapers, baby wipes</li> <li>● Cigarettes</li> <li>● Metal, plastic, glass</li> <li>● Foil wrap</li> <li>● Diapers, wipes, hygiene products</li> <li>● Produce netting</li> <li>● Styrofoam</li> <li>● Pet waste</li> <li>● Alcohol</li> <li>● Shellfish</li> </ul> |
|---|--|

**Note:**

1. Make sure to cut up rigid stems/fibrous vegetables (e.g. flower stems, broccoli stems, kale stems, etc.) so that they don't get stuck during grinding. If the bucket/kitchen composter appears to be damaged from the addition of any of the items listed in the "Dont's" column, the warranty is void.
  
2. Please filter out the oil and water in the food waste before treatment. The large amount of oil may lead to the failure of the drying treatment.
  
3. Do not mix high-sugar starchy food waste, such as rice, pasta, bananas, corn, potatoes, etc. This type of food waste should be mixed with other food waste or it will be easily scorched.

## How to Care for the Smart Kitchen Composter

### ● Cleaning your Smart Kitchen Composter

Knowing how to keep the composter clean is important so that it stays looking great and continues to function at its best. We recommend cleaning the composter exterior once a month or as frequently as you would clean any other kitchen appliance. To keep your composter at optimal performance, clean the interior of the bucket routinely.

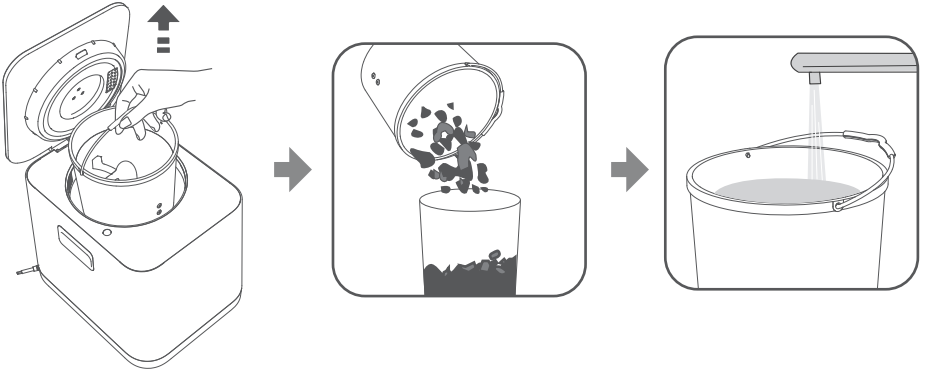
Ensure your composter is unplugged before cleaning. To wash the exterior of the composter, simply wipe with a damp dish cloth. If your composter is particularly dirty, add a small amount of dish soap during the cleaning process.

Finally, use a dry cloth to remove excess moisture.

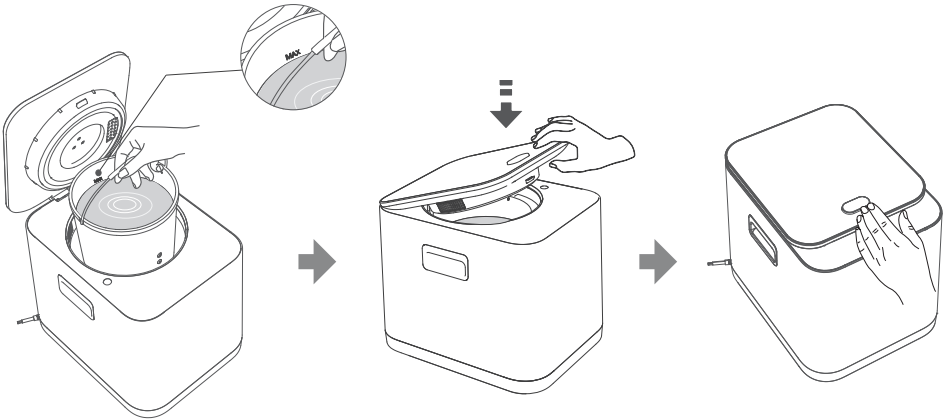
Never submerge your composter under water. Excess water would cause significant damage to the electrical components and could cause electric shock.

● Smart Pre-clean Function

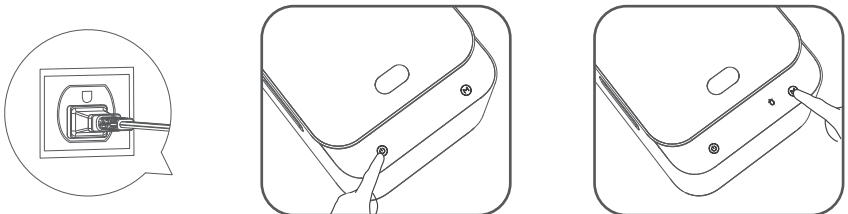
1. After the food waste treatment is completed, unplug from power. Take out the bucket (use the handle to prevent scalding). Pour out the food waste, and then fill the bucket with water below the MAX line. It is recommended to add water no less than 75% of the MAX line for each cleaning.



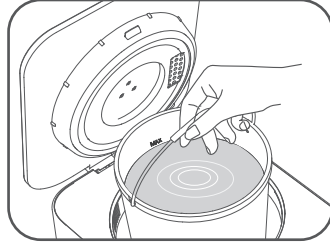
2. Put the bucket with water back into the composter. Make sure you put it in correctly. Close the lid.



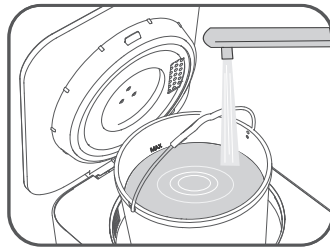
3. Plug into power. Touch the ON/OFF Button. Then touch the Mode Button and select Clean Mode.



4. The Clean Mode will start and might last for one hour. After the cleaning is completed, take out the bucket. Use the handle to prevent scalding.



5. Pour out the liquids inside the bucket. Rinse the interior surfaces of the bucket several times with room temperature water. Before putting the bucket back, make sure the bucket surfaces are cool and dry.



#### ● Cleaning the Bucket

The bucket can be easily removed and washed by hand or placed in the dishwasher for a more thorough cleaning.

Ensure the bucket is free from any excess dirt/particles before placing it in the dishwasher.

This should be run on a hot cycle.

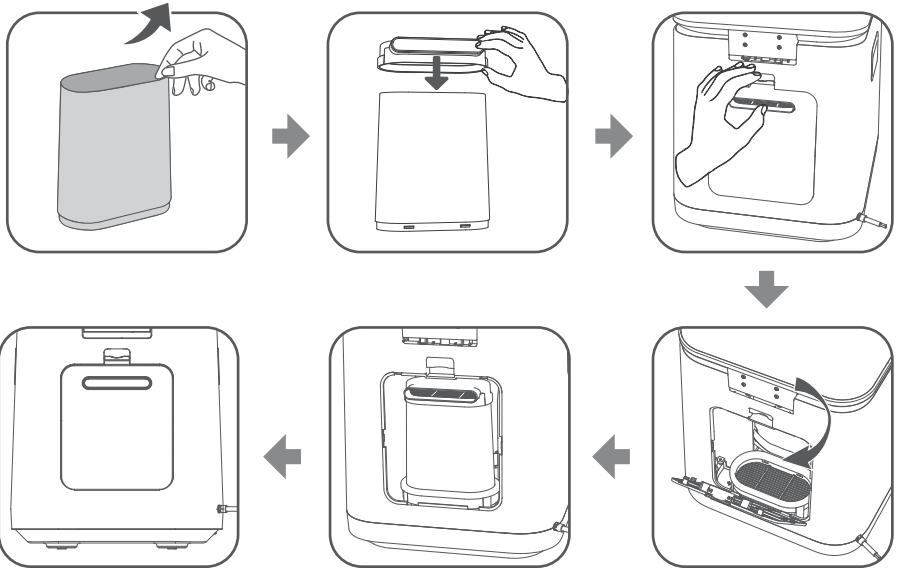
## Changing Filters

1. It is recommended that the activated carbon filter is replaced every 1-3 months (Lifespan: 730 - 2160 hours), depending on the food waste. Replace it every 3 months if the amount of food processed is small and the smell of it is light. Replace it every month if the amount of food processed is large and the smell of it is heavy.

2. Unplug the unit before replacing the filter's activated carbon.

### 3. Installation of the Activated Carbon Filter

Remove the protective film from the activated carbon filter. Assemble the filter air outlet module on the smallest surface of the filter. Open the back cover of the composter, place the activated carbon filter into place with the larger surface facing down. Close the back cover to complete the installation. Make sure the air outlet aligns with the hole on the back cover.



4. If your activated carbon filter's usage period has expired, please replace it. Please contact our customer service team for a replacement or purchase through the Govee Store.

## Troubleshooting

The troubleshooting section below is for solving frequently asked questions. If your problem persists, please contact Customer Support.

### For GoveeLife Smart Kitchen Composter

Problem	Indicator
The composter produces bad odors.	<ul style="list-style-type: none"> <li>● Replace used activated carbon in the filter.</li> <li>● Check for old waste build up.</li> <li>● Don't let waste sit for too long.</li> <li>● The food waste might have a heavy smell. After being heated up, the steam might not completely disappear immediately. It is recommended to open the windows.</li> </ul>

<p>The food waste is too wet.</p>	<ul style="list-style-type: none"> <li>● Drain liquids from waste before placing it in the bucket.</li> <li>● The Composting Mode might have been turned off accidentally during operation. If so, turn it on again.</li> <li>● The food waste in the bucket might have surpassed the MAX line. Make sure not to surpass the MAX line when adding waste.</li> <li>● The food waste might contain a large amount of oil or water. Filter the oil from the waste before adding into the bucket.</li> </ul>
<p>The food waste is too dry or it is scorched.</p>	<ul style="list-style-type: none"> <li>● Add 100mL of water and try again. Note: The composter starter can be affected by location and local humidity levels.</li> <li>● The food waste might contain high-sugar starchy food such as rice, noodles, potatoes, etc. It is recommended to mix this type of food waste with many other types of food waste.</li> <li>● If scorching takes place, please add water and soak for a period of time and then wash it.</li> </ul>
<p>The composter is taking too long.</p>	<ul style="list-style-type: none"> <li>● Listen carefully to check whether the grinder is moving or if the fan is on. If not, there may be a jam.</li> <li>● Unplug the composter, open the lid and remove the waste that is causing the jam.</li> <li>● Close the lid and restart the cycle.</li> </ul>
<p>What mix of waste and bioplastics is the best for the machine? Can I do a load with just bioplastics?</p>	<p>Based on testing, a 10% maximum of bioplastic in relation to food waste/organic waste is optimal. Do not try to go over this. Adding only bioplastics is not recommended. It needs to be mixed with organic waste.</p>
<p>Can I run a half load? How full is the minimum and maximum?</p>	<p>You can run a load as small as you want, but there is a line on the bucket indicating the maximum capacity. The composter will run with low content capacity. The cycle may complete faster. <b>DO NOT RUN EMPTY!</b></p>



<p>If I stop the composter or unplug it in the middle of operation, will it be hot? What do I do to start it up again?</p>	<p>Bucket and contents will be hot. CAUTION: DO NOT TOUCH! There may be some steam so don't stay too close.</p> <p>To restart, close the lid and touch the ON/OFF Button again. Then touch the Mode Button and select Composting Mode. It will start the whole cycle again but will still process the waste. The cycle might take a shorter amount of time with half-processed waste.</p>
<p>Can the composter sit with unprocessed waste for a few days while I fill it? Will it smell?</p>	<p>It is okay to leave unprocessed waste in the composter for a few days. Filter odor control is inactive while the composter is not running, which may cause it to smell.</p> <p>We recommend you turn on the Storage Mode or run the Composting Mode routinely so that you are not leaving in waste for too long.</p>
<p>Large steam comes out of the air outlet.</p>	<p>The food waste might contain too much water. Steam is produced by the evaporation of water when heating food waste. To protect the environment and save energy, please filter out the oil and water first.</p>
<p>The composting time is too long.</p>	<p>The food waste may be too much for the composter or it may contain too much water. The water content varies depending on the type and weight of food waste added. The processing time is generally 7.5 hours or less. Make sure your composter can complete the processing of food waste within the standard time while meeting the standard capacity (below the Max line).</p>
<p>The grinder is clogged and the composter has stopped working.</p>	<p>The food waste might contain ox bone, pig bone, sheep bone, shellfish and other waste that is hard to dispose.</p>

# Appendix

## After-Sales Service

-  Warranty: 12-Month Limited Warranty
-  Support: Lifetime Technical Support
-  Email: support@govee.com
-  Official Website: www.govee.com
-  @Govee  @goveeofficial  @govee.official
-  @GoveeOfficial  @GoveeOfficial

## Specifications

Model Name	H7184
Power Supply	AC 120V ~ 60Hz
Power Consumption	550W
Composting Cycles	Drying, Mixing, Cooling
Capacity	~ 3.0L/3.2QT
Net Weight	20.1 lb/9.1 kg
Dimensions	15.6x13.7x14.6in/39.6x34.7x37.1cm

## FCC Compliance Statement

This device complies with Part 15 of the FCC Rules. Operation is subject to the following two conditions: (1) this device may not cause harmful interference, and (2) this device must accept any interference received, including interference that may cause undesired operation.

NOTE: This equipment has been tested and found to comply with the limits for a Class B digital device, pursuant to Part 15 of the FCC Rules. These limits are designed to provide reasonable protection against harmful interference in a residential installation. This equipment generates, uses and can radiate radio frequency energy, and if not installed and used in accordance with the instructions, may cause harmful interference to radio communications. However, there is no guarantee that interference will not occur in a particular installation. If this equipment does cause harmful interference to radio or television reception, which can be determined by turning the equipment off and on, the user is encouraged to try to correct the interference by one or more of the following measures:

- Reorient or relocate the receiving antenna.
- Increase the separation between the equipment and receiver.
- Connect the equipment into an outlet on a circuit different from that to which the receiver is connected.
- Consult the dealer or an experienced radio/TV technician for help.

### FCC Caution

Changes or modifications not expressly approved by the party responsible for compliance could void the user's authority to operate this equipment.

**RF Exposure Statement**

This equipment complies with the FCC RF radiation exposure limits set forth for an uncontrolled environment. This equipment should be installed and operated with a minimum distance of 20cm between the radiator and any part of your body.

The following importer is the responsible party :

Name: GOVEE MOMENTS(US) TRADING LIMITED

Address: 2501 Chatham Rd Suite R Springfield IL 62704

Email: certification@govee.com

Contact information: <https://www.govee.com/support>



FOR INDOOR USE ONLY

The trademark GoveeLife has been authorised to Shenzhen Qianyan Technology LTD.

Copyright ©2021 Shenzhen Qianyan Technology LTD. All Rights Reserved.

The Bluetooth® word mark and logos are registered trademarks owned by Bluetooth SIG, Inc. and any use of such marks by Shenzhen Qianyan Technology LTD is under license.





Govee Home App

For FAQs and more information,  
please visit: [www.govee.com](http://www.govee.com)