
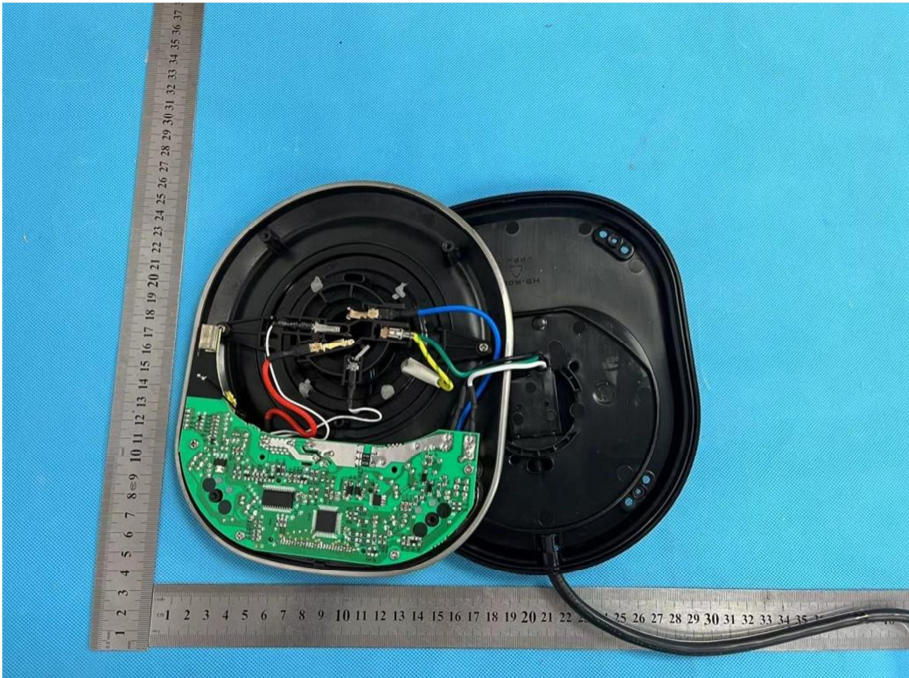
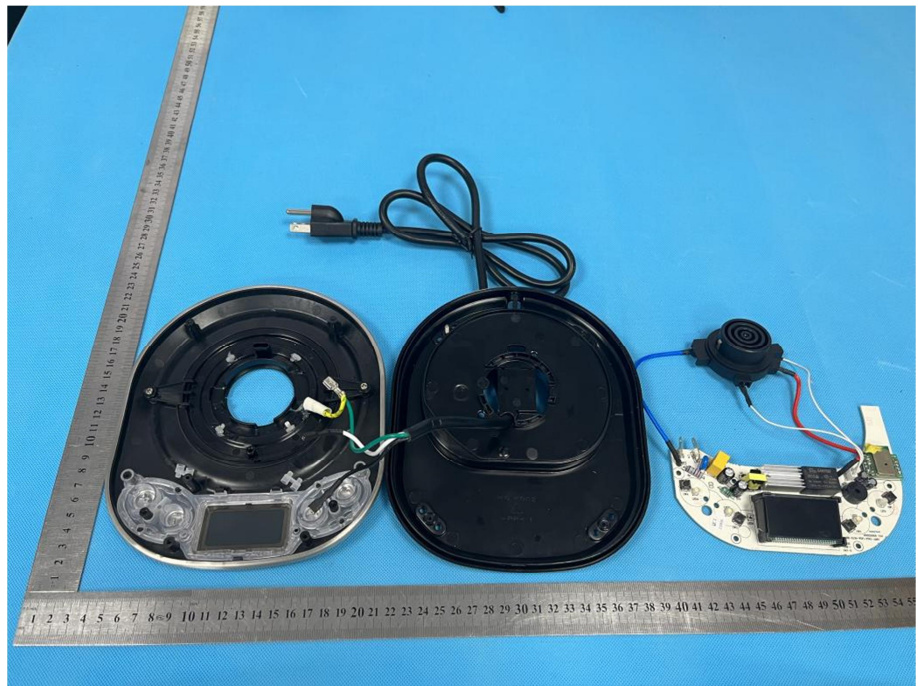


### EXHIBIT 3 - EUT INTERNAL PHOTOGRAPHS

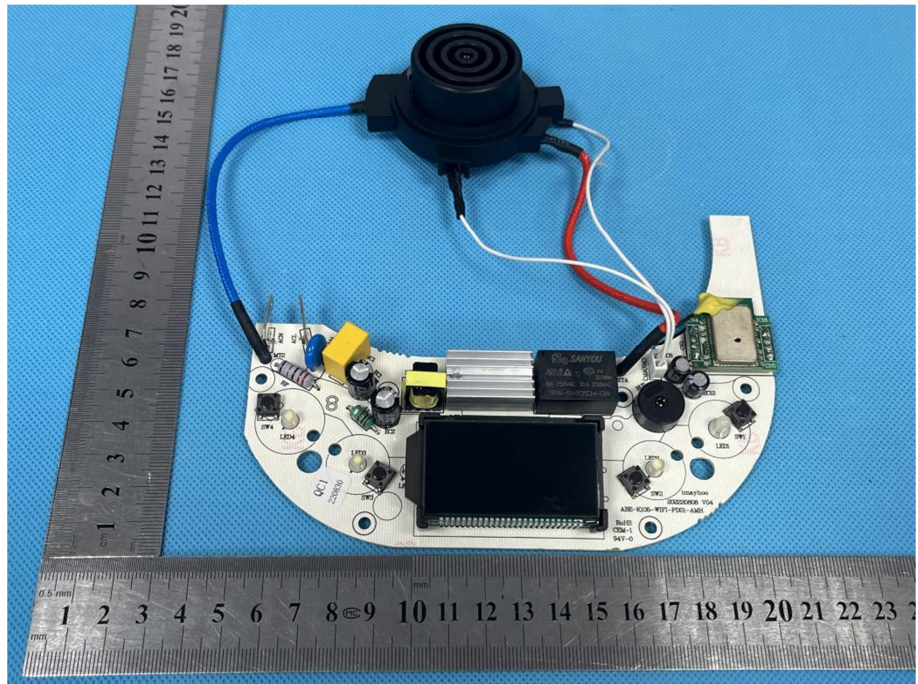
<p><b>EUT Housing and Board View 1</b></p>	
<p><b>EUT Housing and Board View 2</b></p>	



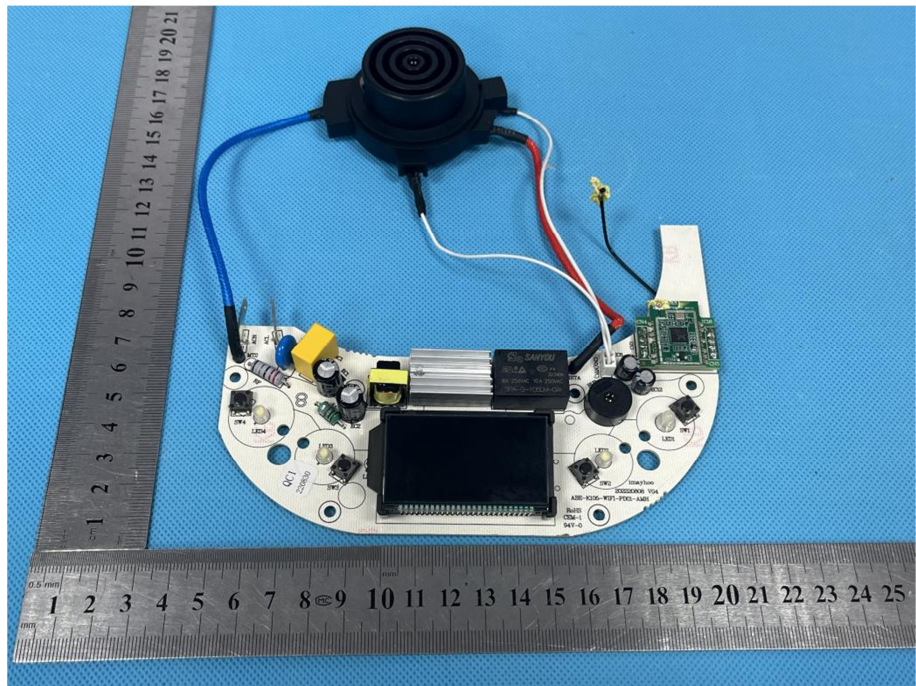
**EUT Housing and Board View 3**



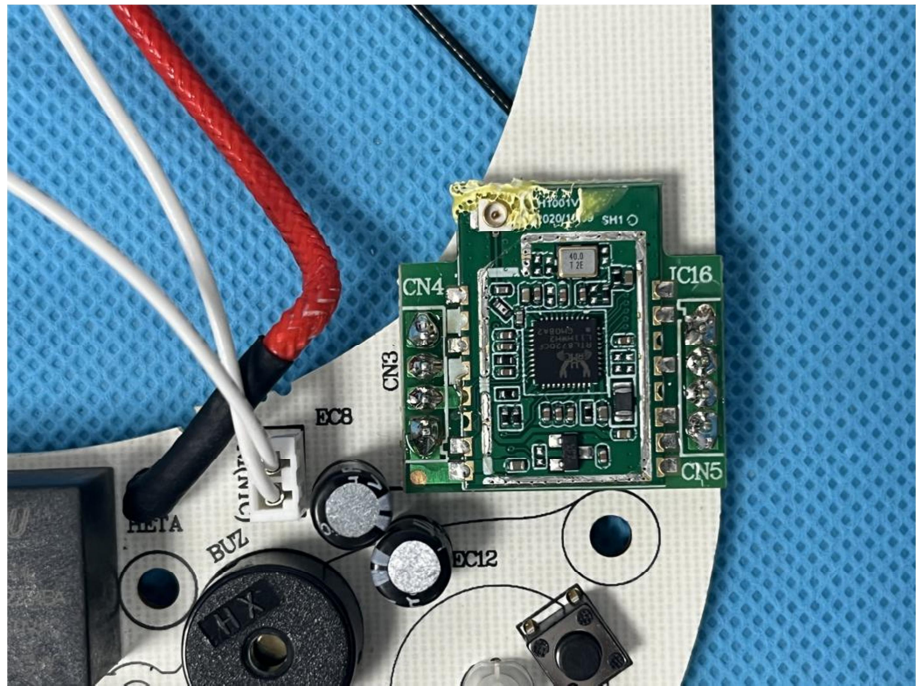
**Solder Board-Component View 1**



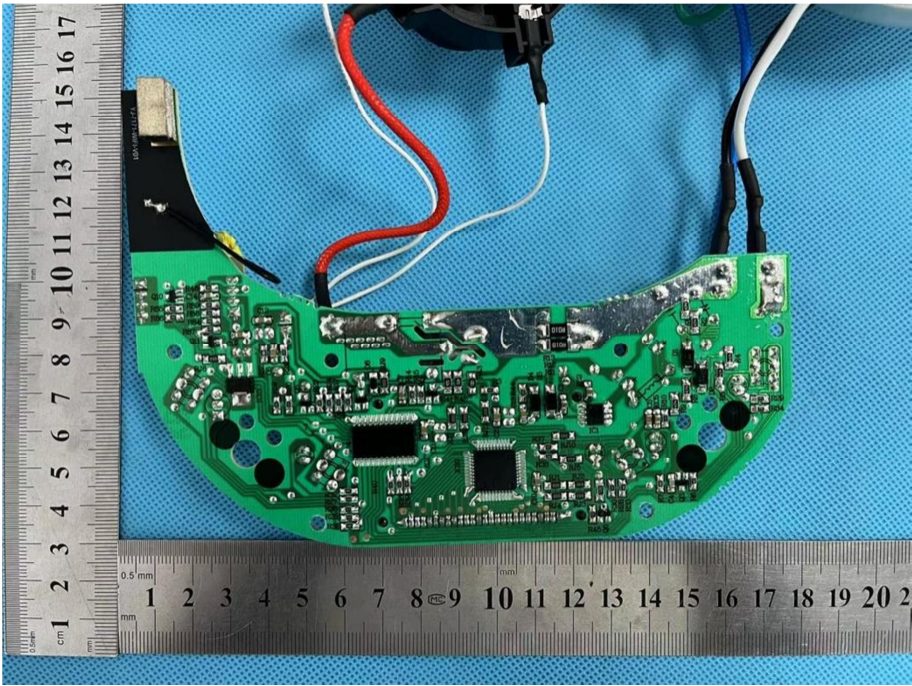
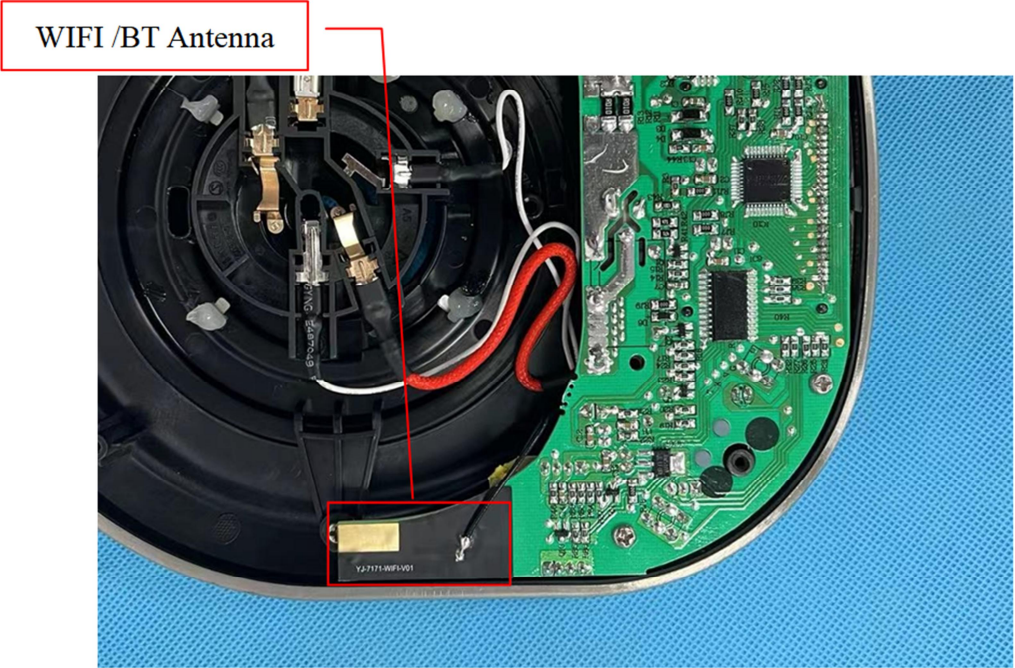
Solder Board-Component View 2



Solder Board-Component View 3





<p><b>Solder Board-Component View 4</b></p>	 <p>A photograph of a green printed circuit board (PCB) component, likely a WiFi/BT antenna module, mounted on a blue textured surface. The component is semi-circular and populated with various electronic components, including integrated circuits and surface-mount components. A metal ruler is placed horizontally below the component for scale, showing measurements in centimeters (0 to 20) and millimeters (0 to 20). The component's length is approximately 18 cm. Several wires (red, white, black) are connected to the board.</p>
<p><b>Antenna View</b></p>	 <p>A photograph showing the internal assembly of the device. The green PCB is visible on the right side, connected to a black plastic housing. A red wire is connected to the board. A yellow component, identified as the WiFi/BT antenna, is mounted on the PCB. A red box highlights this component, and a red line points to it from a label "WIFI /BT Antenna" located in a white box at the top left of the image. Another red box highlights a component on the PCB labeled "Y2-7171-WF3V01".</p>