

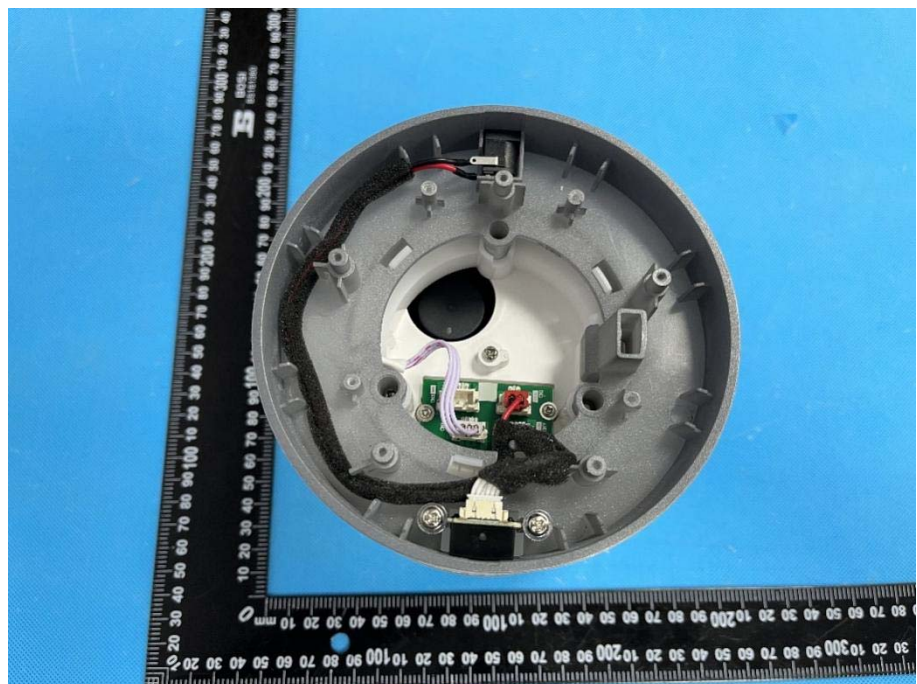
### EXHIBIT 3 - EUT INTERNAL PHOTOGRAPHS

H7161

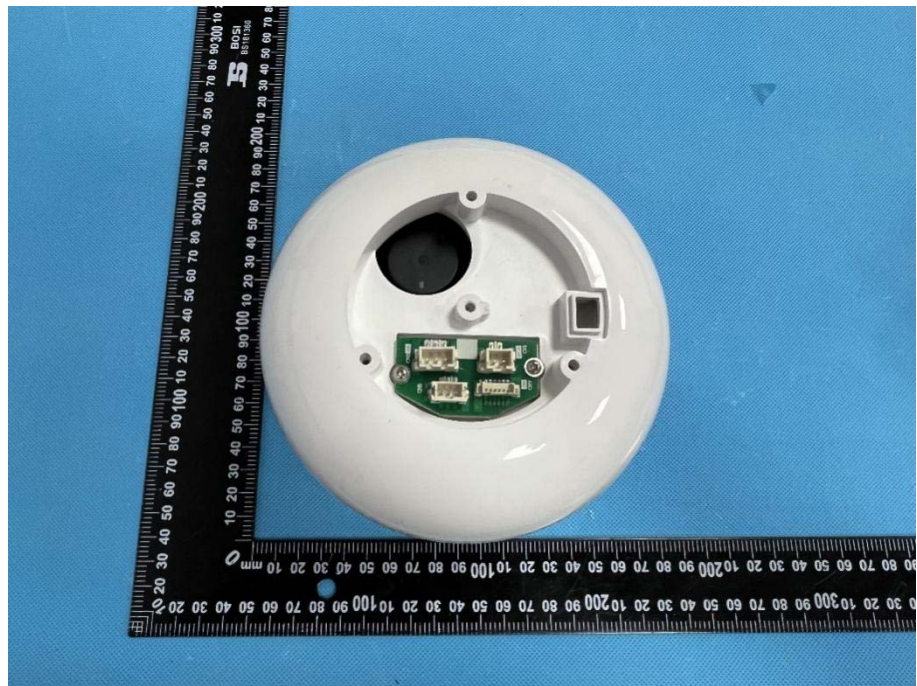
**EUT Housing and Board View 1**



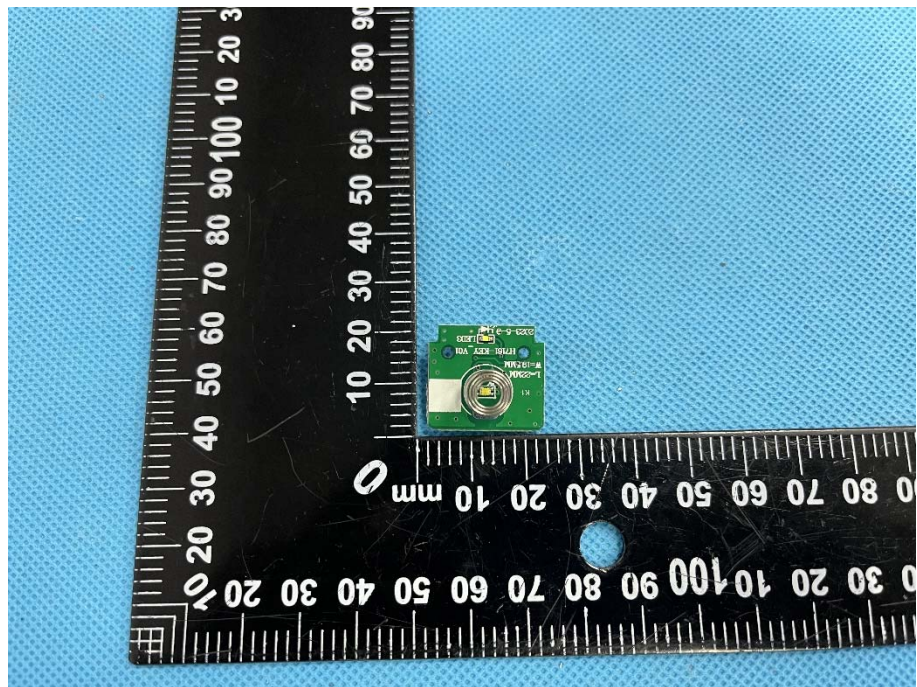
**EUT Housing and Board View 2**

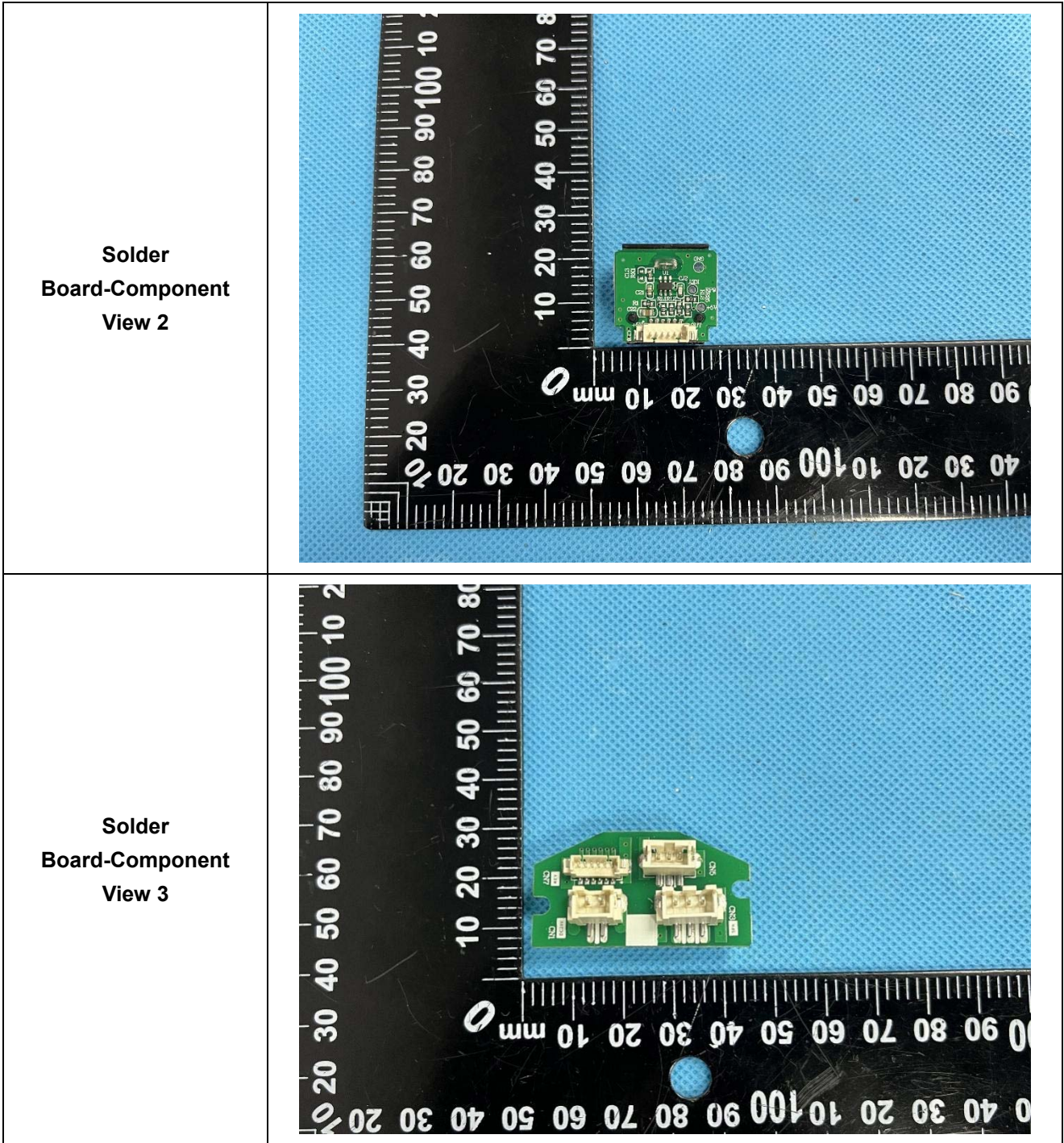


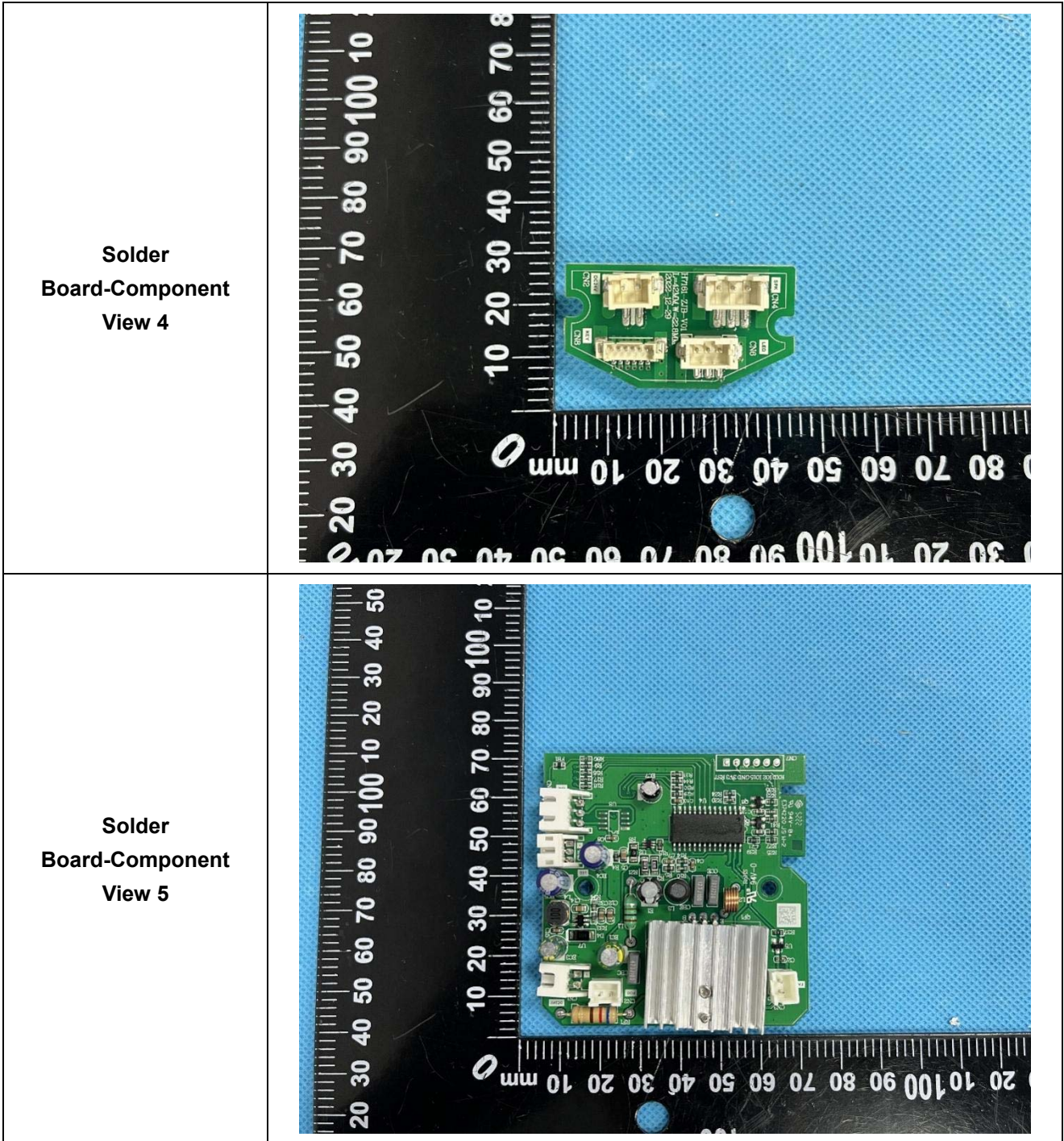
**EUT Housing and  
Board View 3**

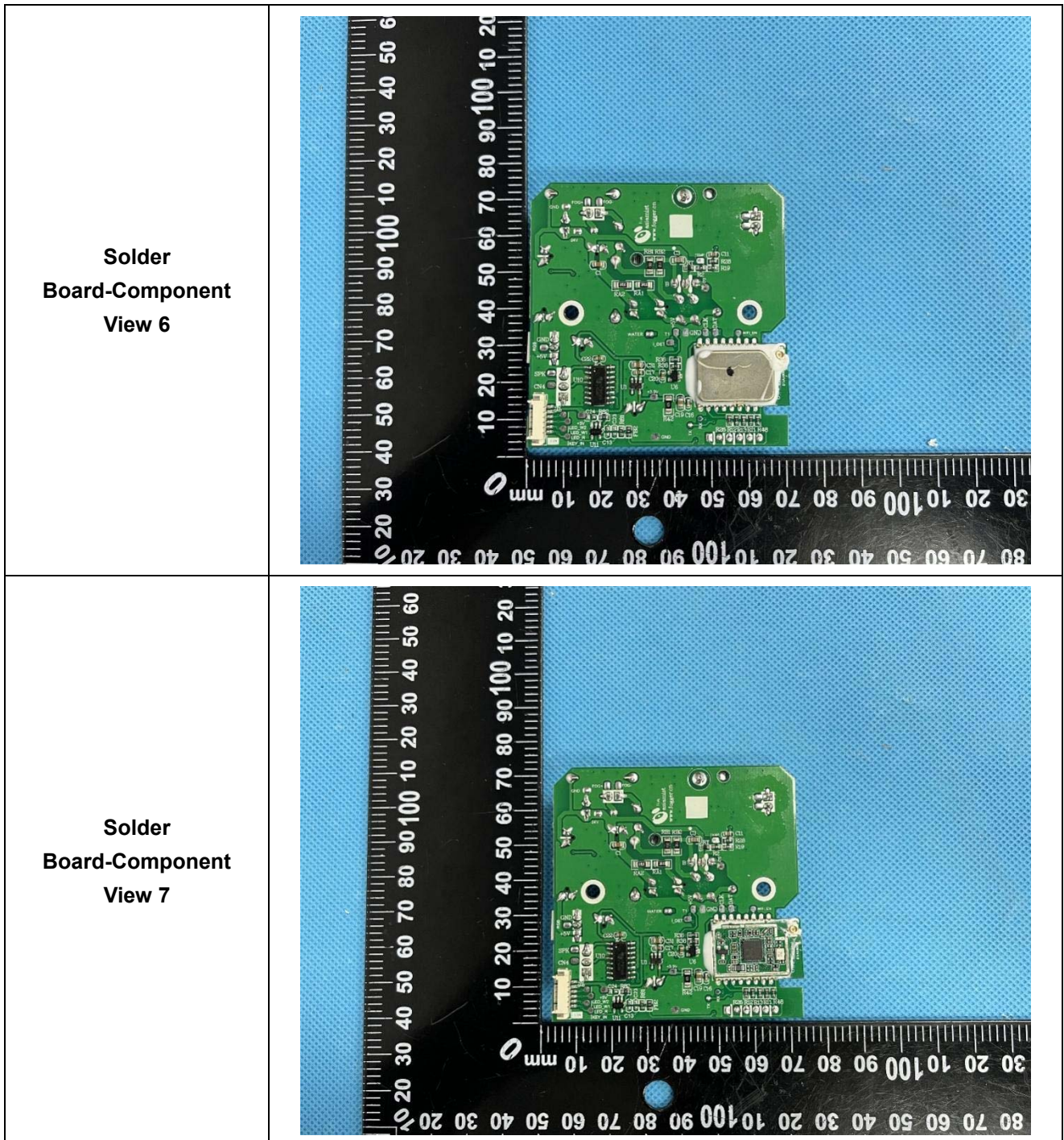


**Solder  
Board-Component  
View 1**



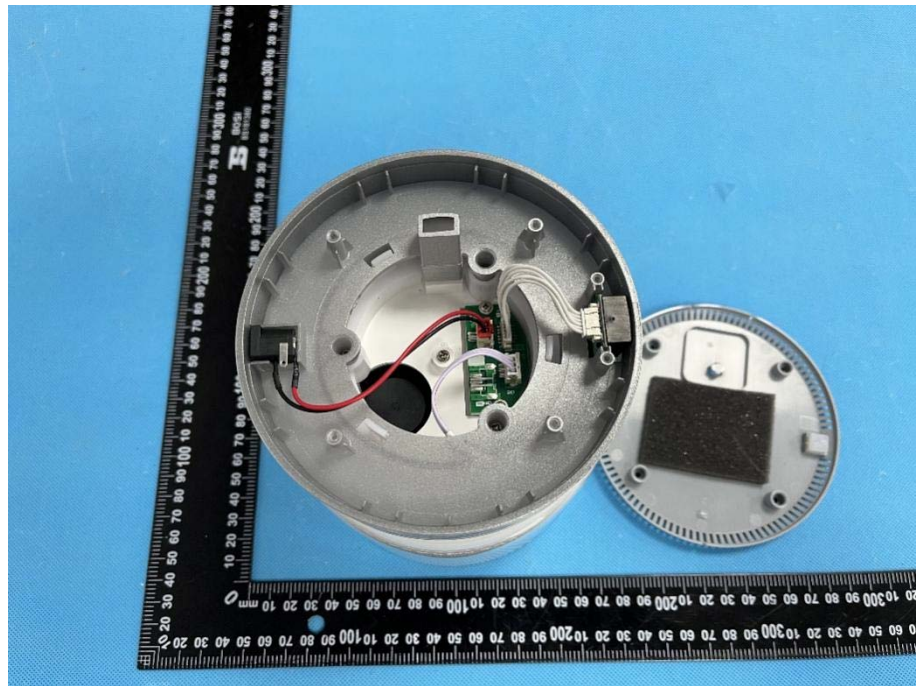






H7162

**EUT Housing and Board View 1**



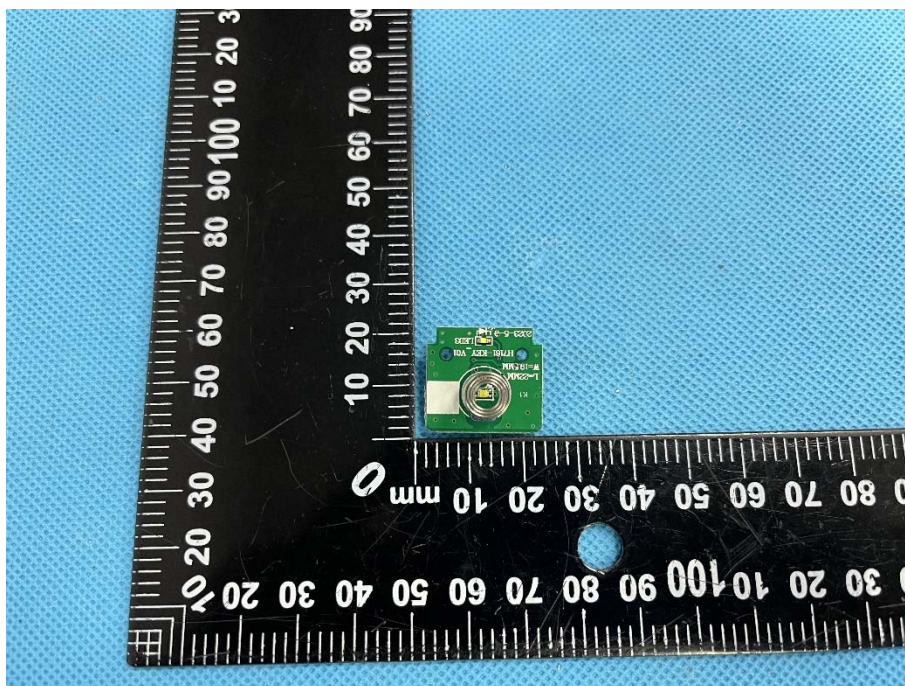
**EUT Housing and Board View 2**

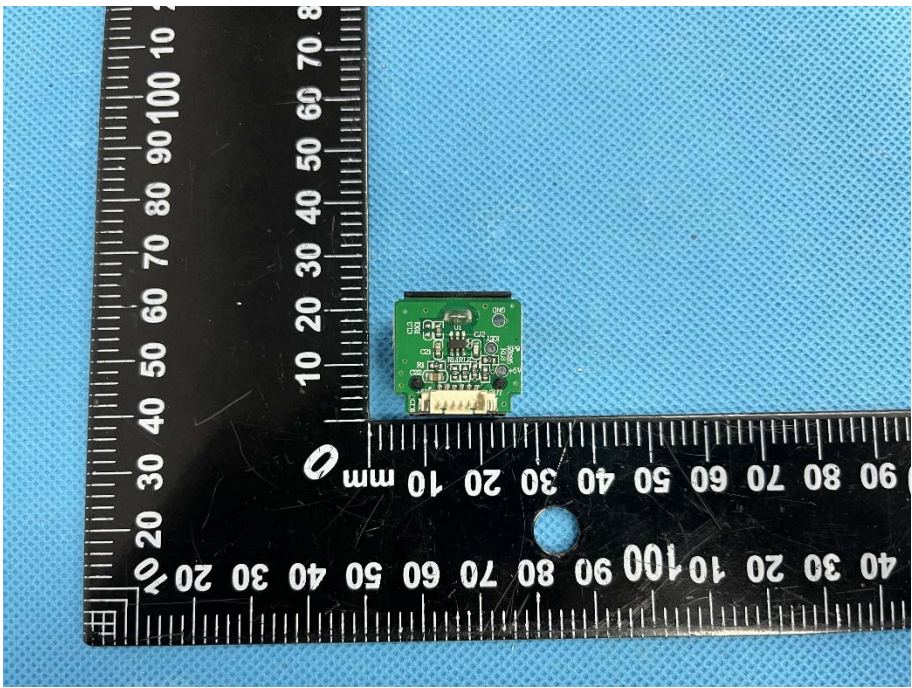
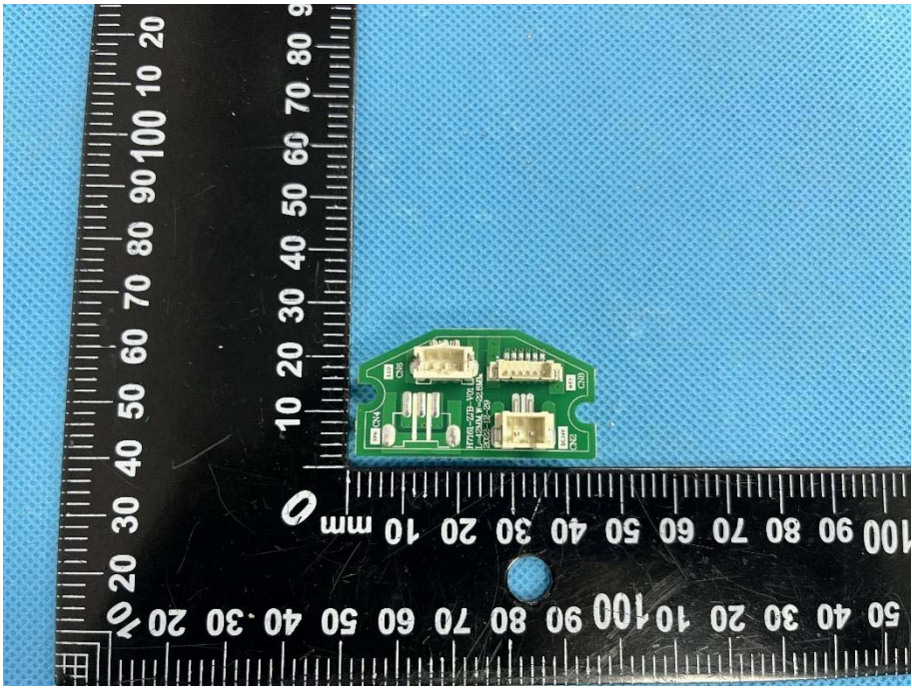


**EUT Housing and Board View 3**

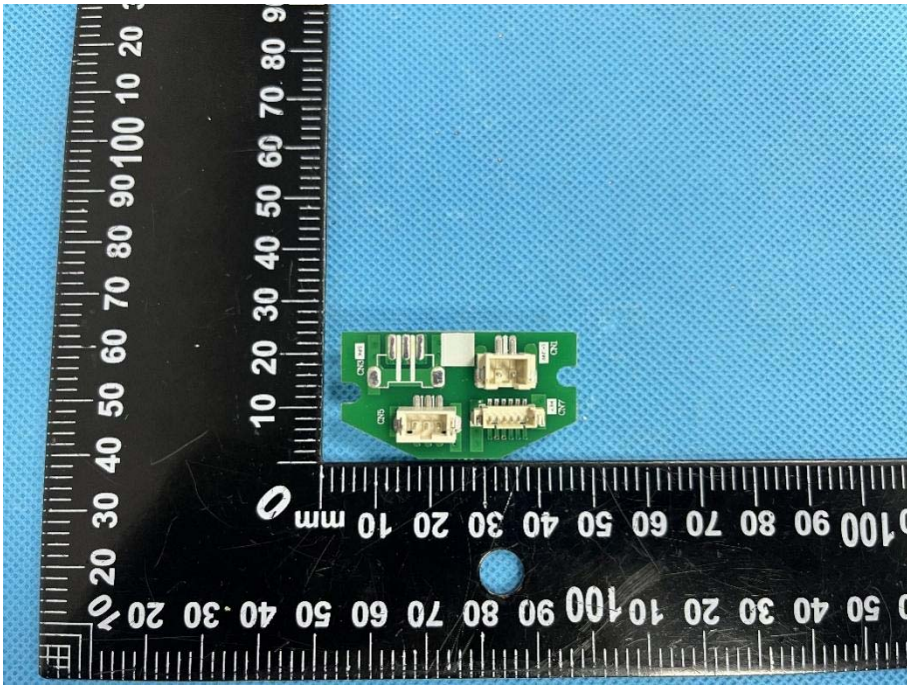
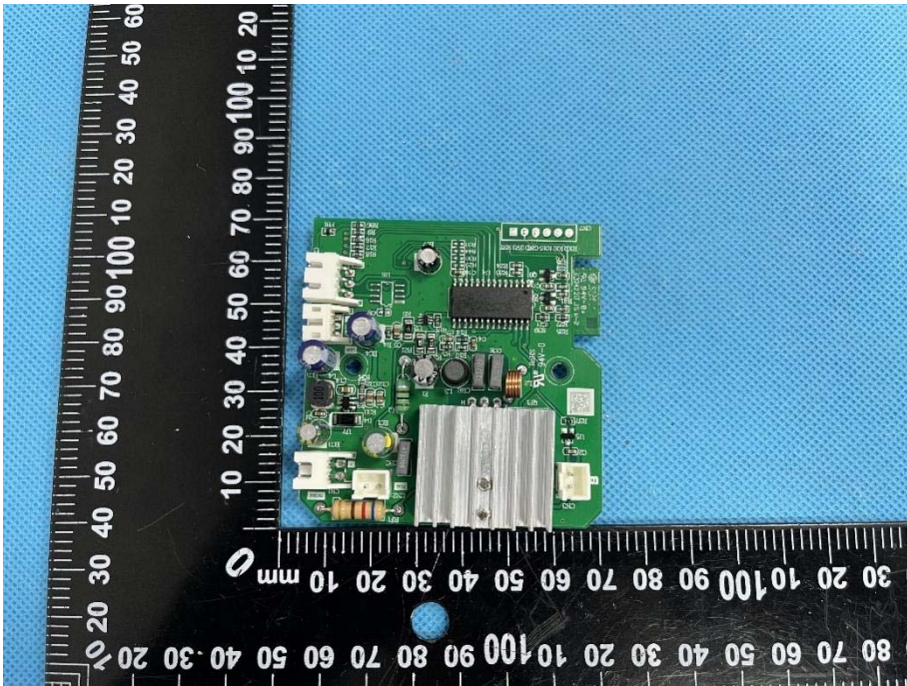


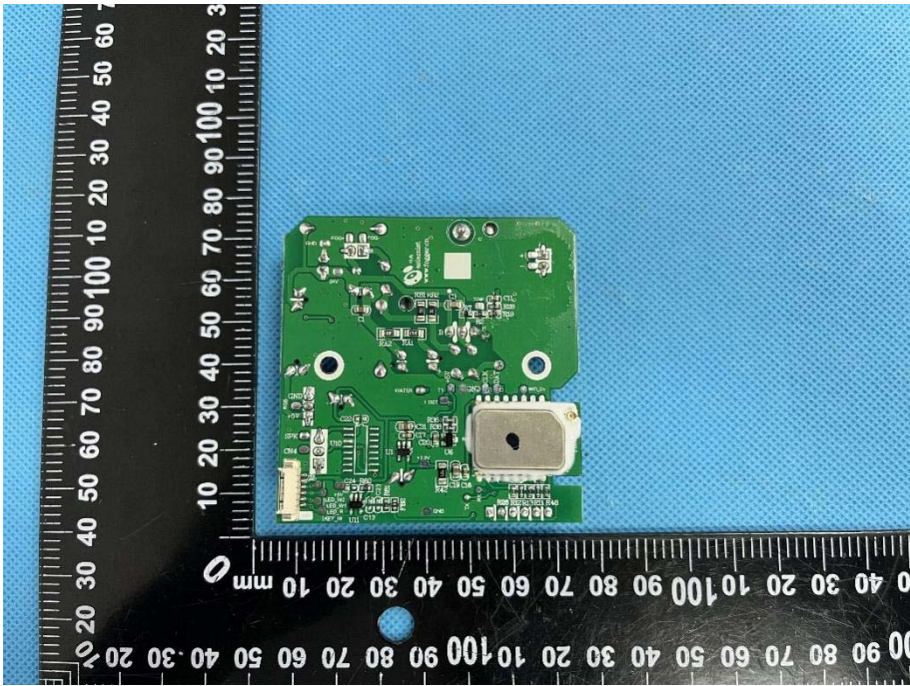
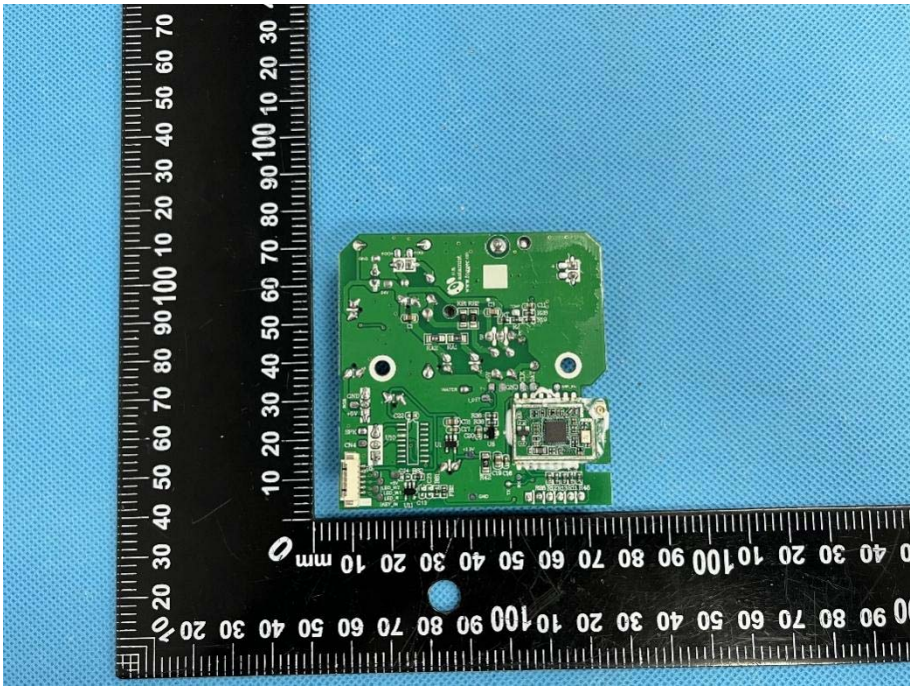
**Solder Board-Component View 1**



<p><b>Solder Board-Component View 2</b></p>	 A photograph showing a small green printed circuit board (PCB) component, likely a solder board, positioned on a blue textured surface. The component is rectangular and features several gold-plated pins along one edge. A black ruler with white markings is placed horizontally below the component, showing measurements in millimeters. The ruler is oriented vertically in the image, with the 0 mark at the top and the 100 mark at the bottom. The component is located between the 10 mm and 20 mm marks on the ruler.
<p><b>Solder Board-Component View 3</b></p>	 A photograph showing the same green PCB component from a different perspective. The component is now oriented horizontally, showing its top surface. It features several gold-plated pins along one edge and various electronic components, including a large integrated circuit (IC) and several smaller components. A black ruler with white markings is placed horizontally below the component, showing measurements in millimeters. The ruler is oriented vertically in the image, with the 0 mark at the top and the 100 mark at the bottom. The component is located between the 10 mm and 20 mm marks on the ruler.



<p><b>Solder Board-Component View 4</b></p>	 A photograph of a small green printed circuit board (PCB) component, likely a solder bridge or connector, placed on a blue textured surface. The component is positioned between two black rulers. The ruler on the left is oriented vertically and shows markings from 0 to 100 mm. The ruler on the bottom is oriented horizontally and also shows markings from 0 to 100 mm. The component features several gold-plated pins and a central solder bridge.
<p><b>Solder Board-Component View 5</b></p>	 A photograph of a larger green PCB component, possibly a power supply or control board, placed on a blue textured surface. The component is positioned between two black rulers. The ruler on the left is oriented vertically and shows markings from 0 to 100 mm. The ruler on the bottom is oriented horizontally and also shows markings from 0 to 100 mm. The component features a large silver heat sink, various electronic components, and connectors.

<p><b>Solder Board-Component View 6</b></p>	 A photograph of a green printed circuit board (PCB) component, labeled as View 6. The component is rectangular and populated with various electronic components, including a large silver component on the right side. It is placed on a blue textured surface next to a black ruler with white markings. The ruler shows measurements in millimeters, with the component's length being approximately 100 mm and its width around 40 mm.
<p><b>Solder Board-Component View 7</b></p>	 A photograph of the same green PCB component, labeled as View 7. This view shows the component from a slightly different angle, highlighting the solder joints and the arrangement of components. It is placed on the same blue textured surface next to the same black ruler. The component's dimensions are consistent with View 6, approximately 100 mm by 40 mm.

