

EXHIBIT 3 - EUT INTERNAL PHOTOGRAPHS

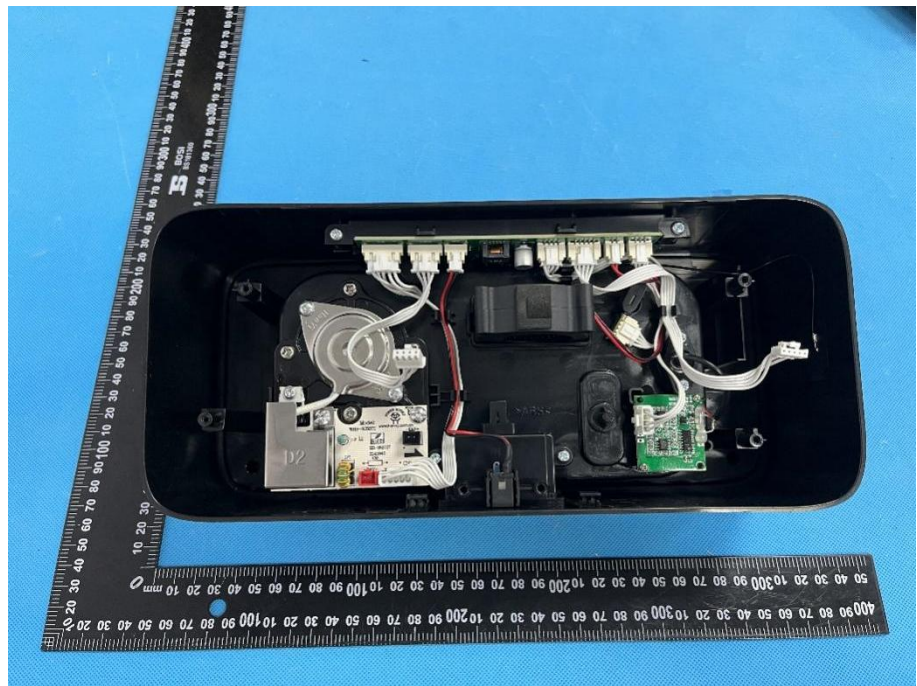
EUT Housing and Board View 1



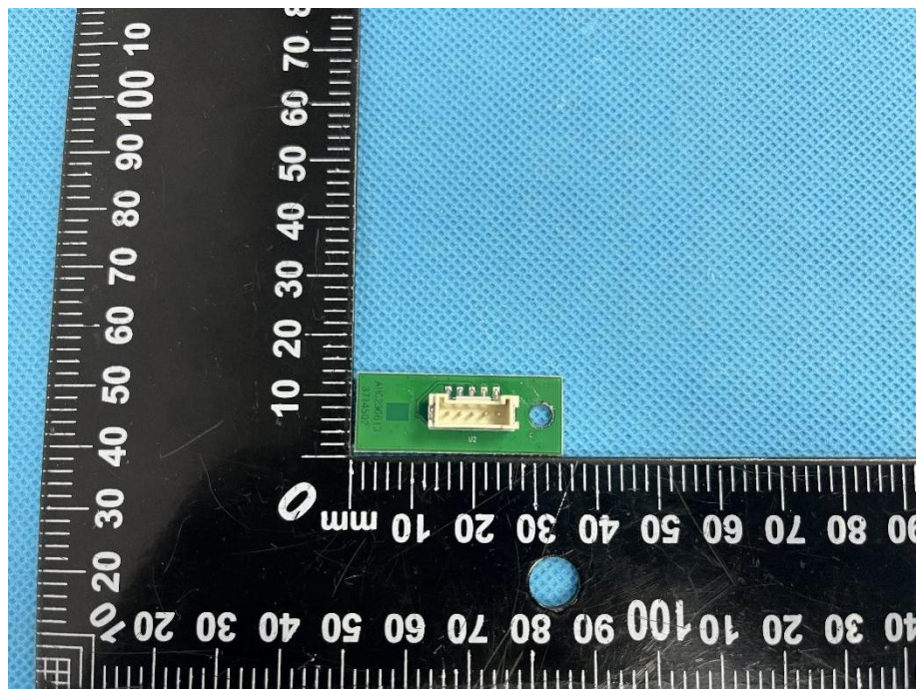
EUT Housing and Board View 2

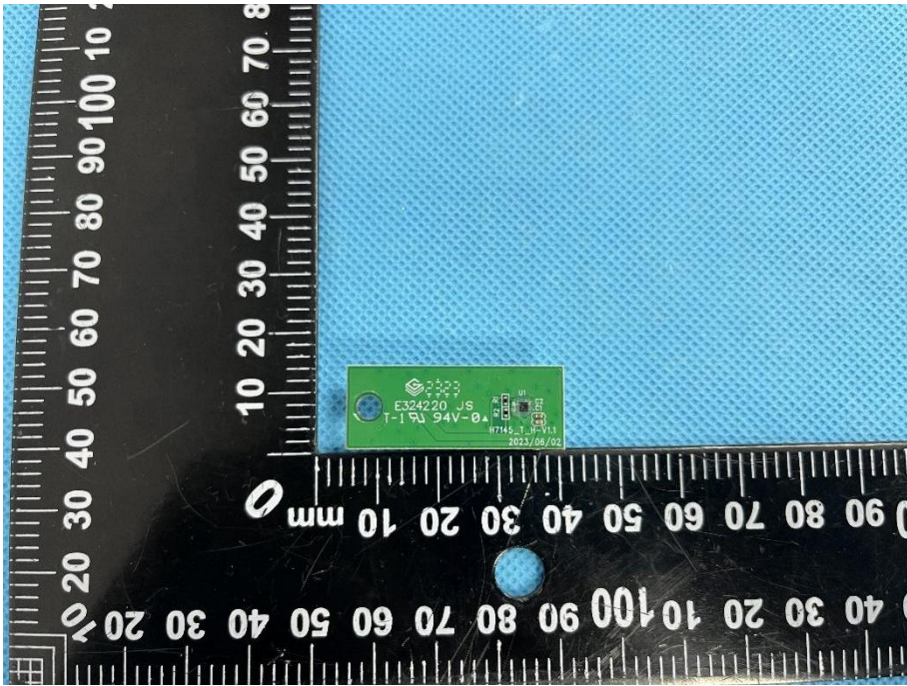
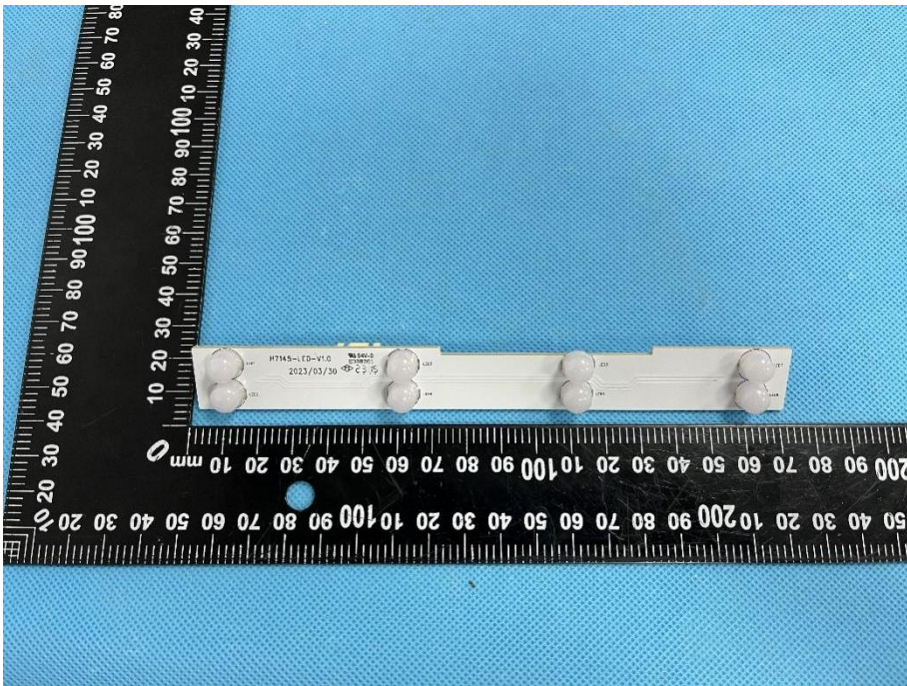


**EUT Housing and
Board View 3**

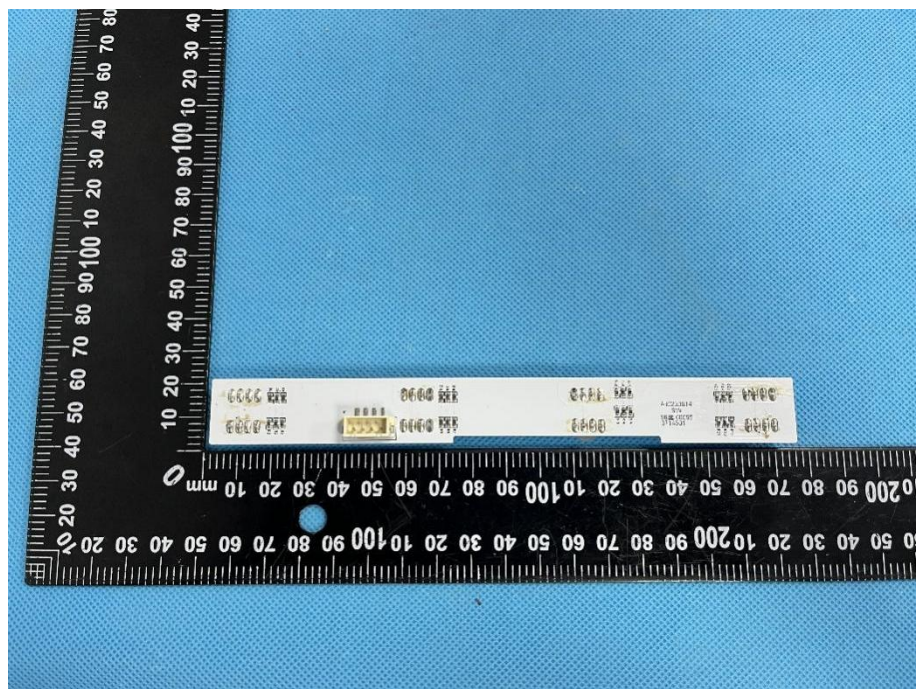


**Solder
Board-Component
View 1**

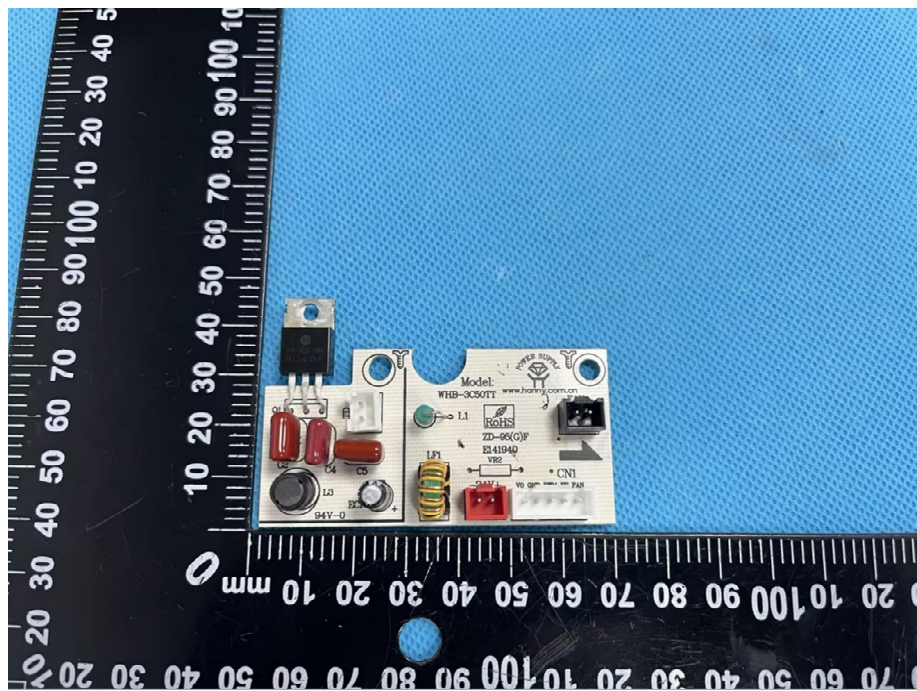


<p>Solder Board-Component View 2</p>	 <p>A photograph of a small green PCB component. The component is rectangular and has several markings: 'E324220 JS', 'T-1 5V 94V-0', and 'H7145-T-1-V1.1 2023/06/02'. It is placed on a blue textured surface next to a black ruler with white markings. The ruler shows measurements in millimeters, with the component positioned between the 10mm and 20mm marks.</p>
<p>Solder Board-Component View 3</p>	 <p>A photograph of a white PCB component. The component is rectangular and has several markings: 'H7145-ED-V1.0', '2023/03/30', and 'CIP-15'. It is placed on a blue textured surface next to a black ruler with white markings. The ruler shows measurements in millimeters, with the component positioned between the 10mm and 20mm marks.</p>

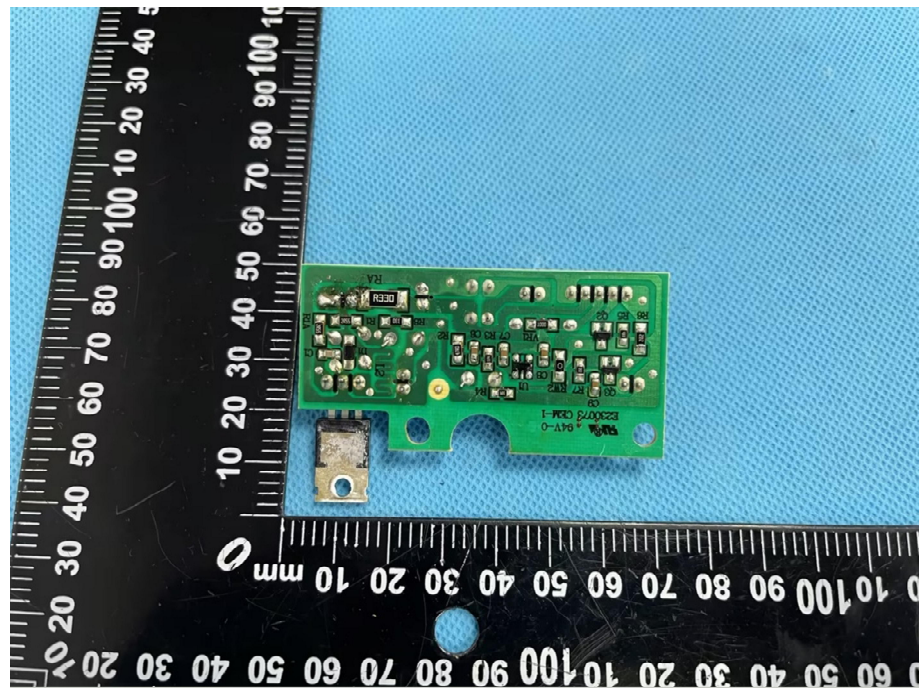
**Solder
Board-Component
View 4**



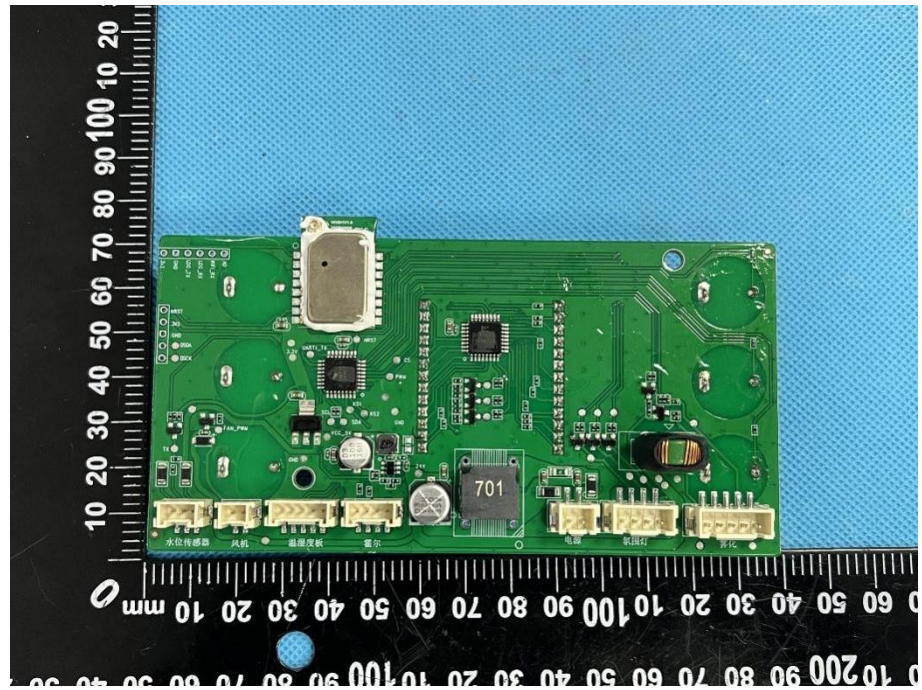
**Solder
Board-Component
View 5**



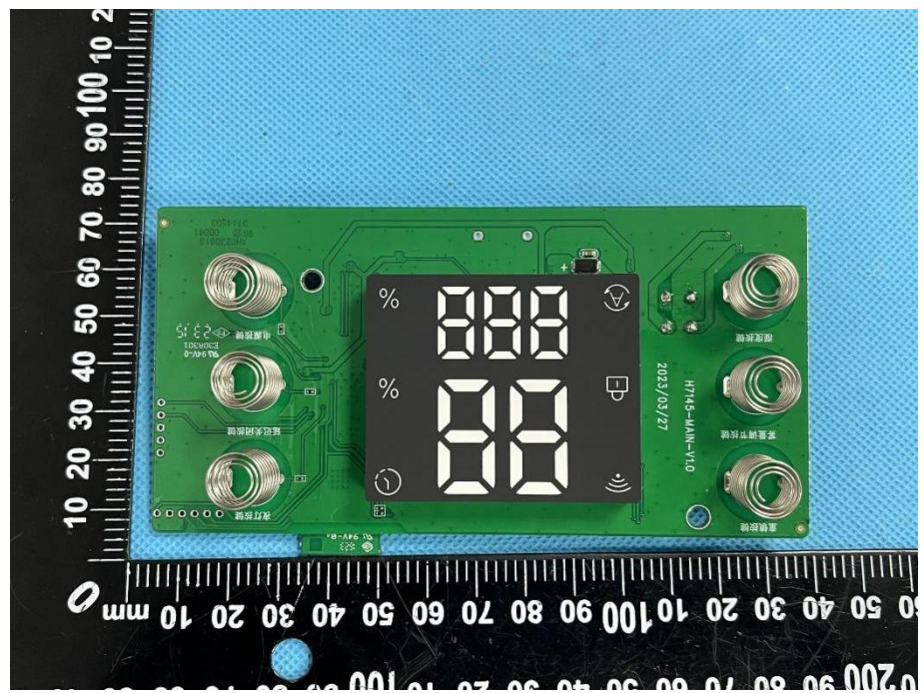
Solder
Board-Component
View 6



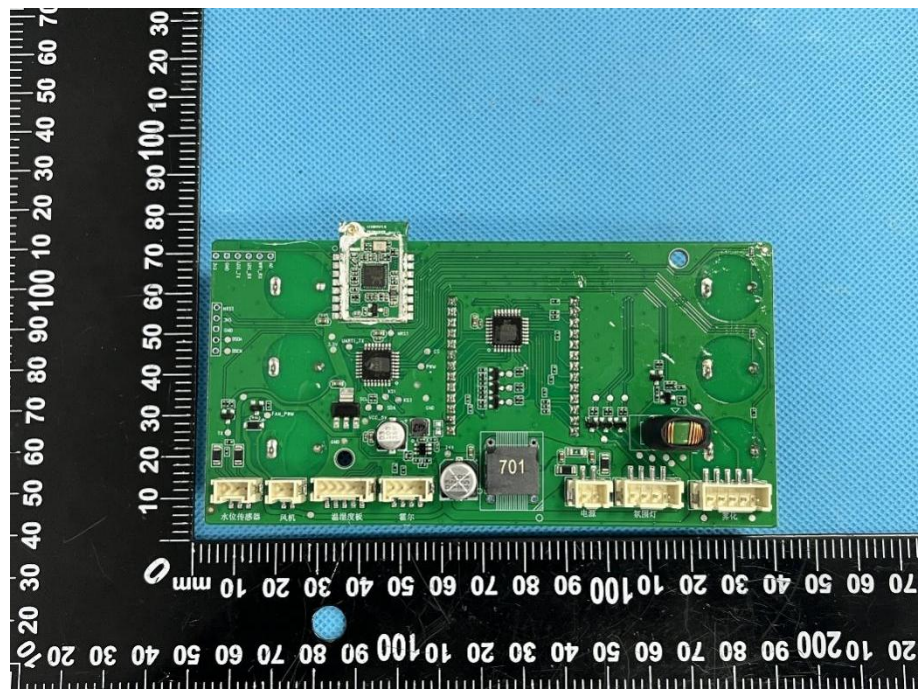
Solder
Board-Component
View 7

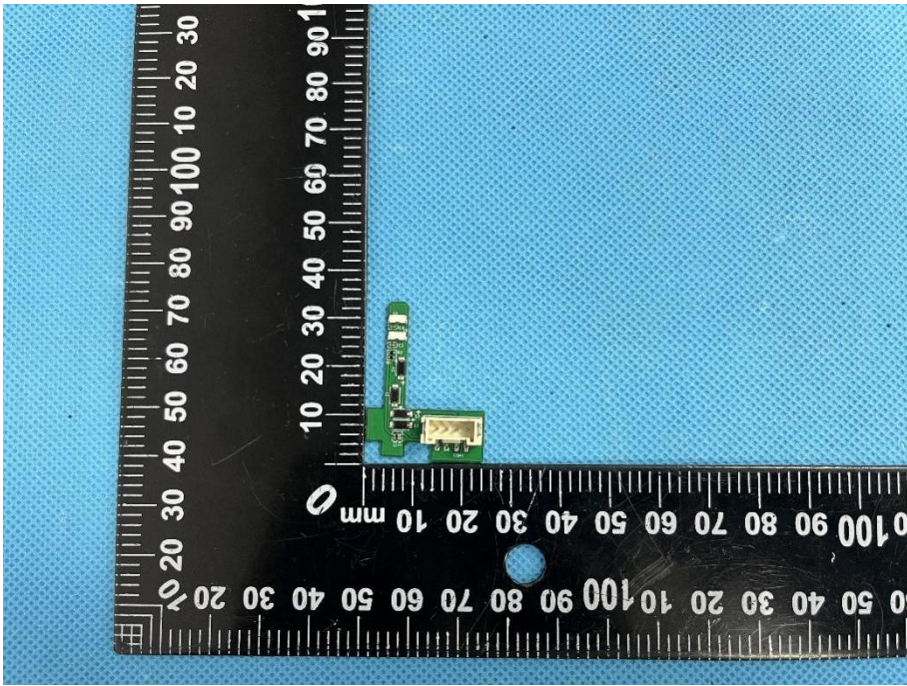
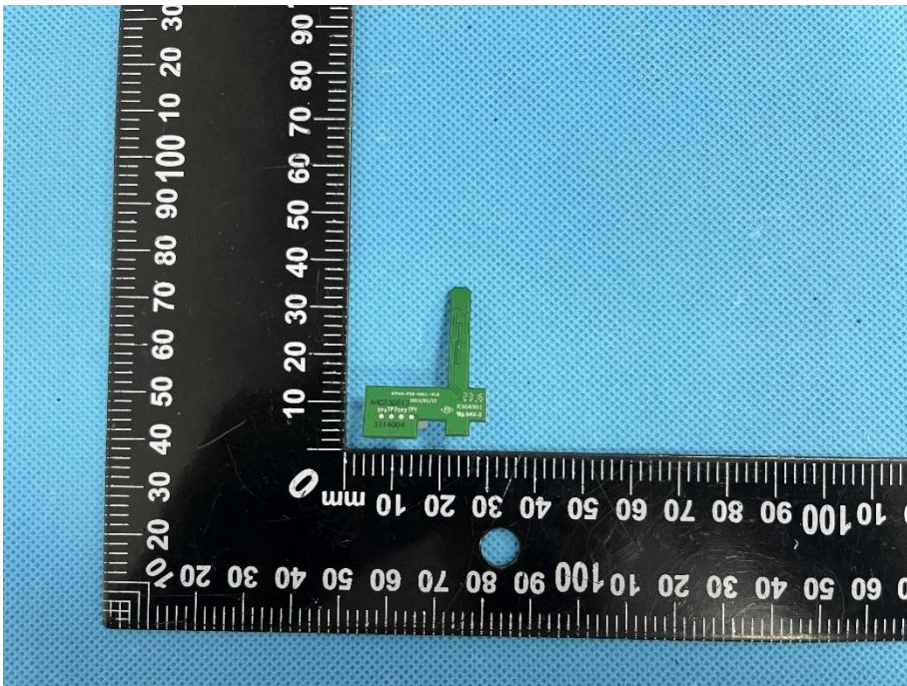


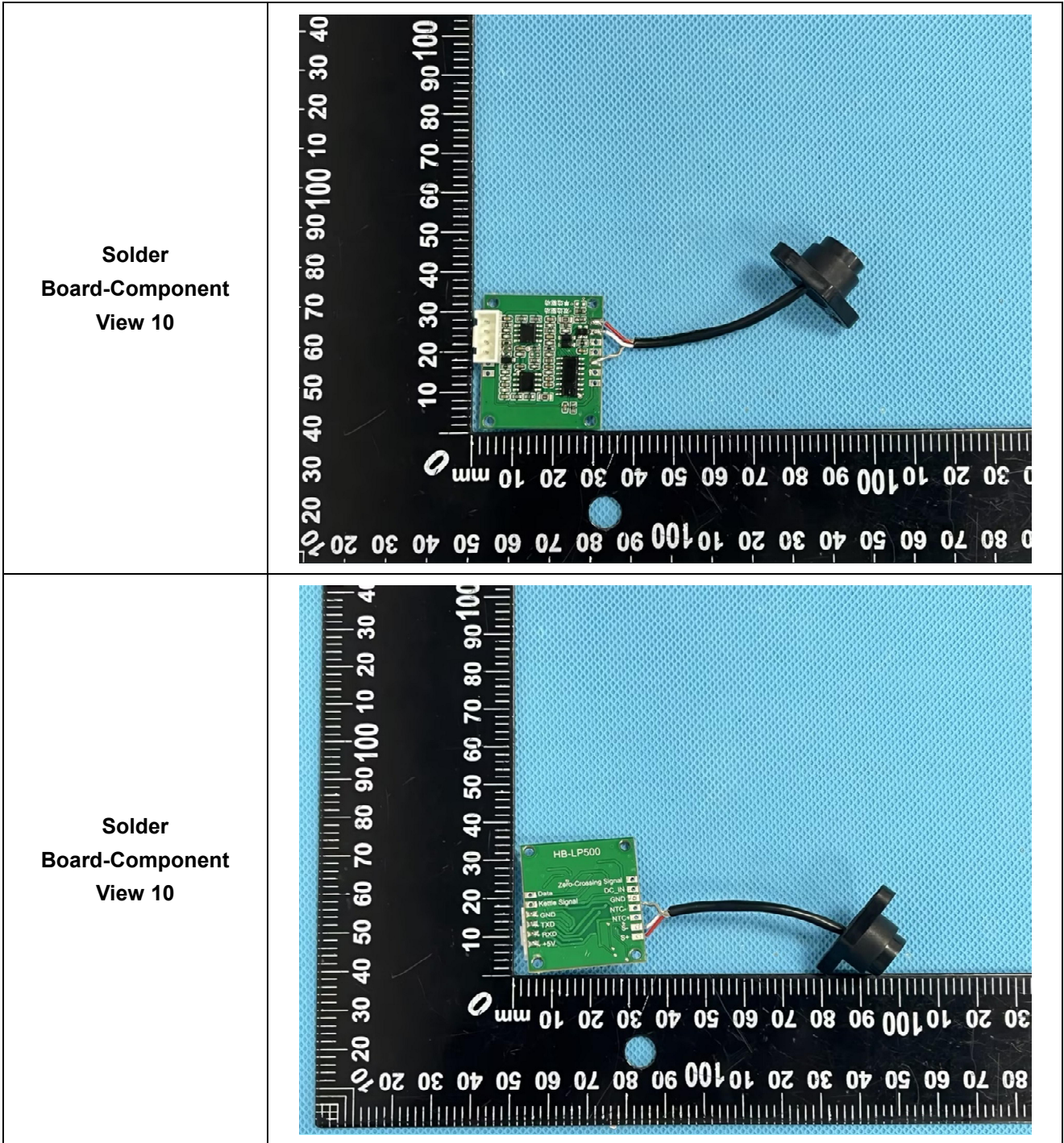
Solder
Board-Component
View 8



Solder
Board-Component
View 9



<p>Solder Board-Component View 10</p>	 A photograph of a small green printed circuit board (PCB) component, likely a solder bridge or connector, positioned on a blue textured surface. The component is L-shaped, with a vertical section and a horizontal section. It is placed next to a black L-shaped ruler for scale. The ruler has white markings in millimeters, with the horizontal scale at the bottom and the vertical scale on the left. The component's vertical section is approximately 25 mm long, and its horizontal section is approximately 20 mm long. The component is oriented vertically, with its horizontal section pointing to the right.
<p>Solder Board-Component View 10</p>	 A photograph of the same small green PCB component as in the first image, positioned on a blue textured surface. The component is oriented vertically, with its horizontal section pointing upwards. It is placed next to a black L-shaped ruler for scale. The ruler has white markings in millimeters, with the horizontal scale at the bottom and the vertical scale on the left. The component's vertical section is approximately 25 mm long, and its horizontal section is approximately 20 mm long. The component is oriented vertically, with its horizontal section pointing upwards.



Antenna View

