

Antenna test report

Test Laboratory:	Dongguan Yijia Electronic Co., LTD
Laboratory address:	No. 59 Muyu Road, Shatou Community, Chang 'an Town, Dongguan City, Guangdong Province
Contact:	Mr. Gan 13823198410
Test item:	H6168

1. Test procedures (test standards);

3.1 Test standard

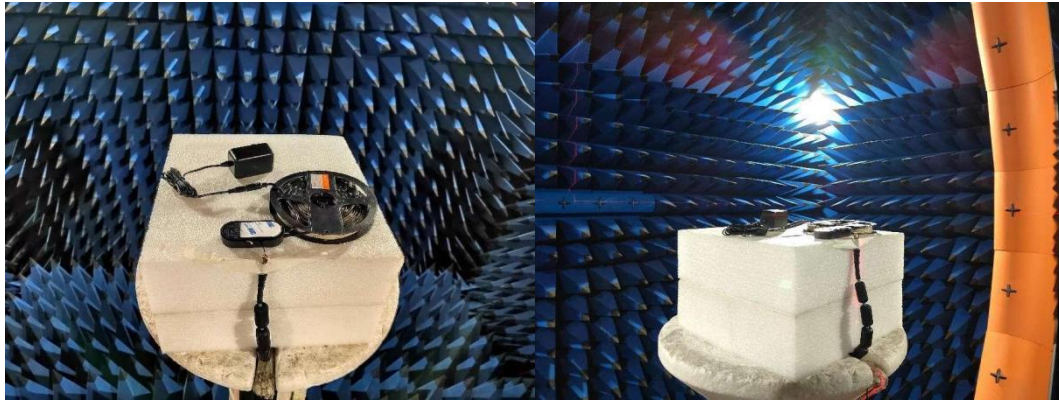
Name	Parameter	Method	Standard no.
Mobile communication antenna	VSWR	Generic specification for antennas used in the mobile communications	GB/T 9410-2008
	Antenna gain		
	Radiation pattern		
Antenna	Radiation efficiency	IEEE Standard Test Procedures for Antennas	ANSI/IEEE Std 149-1979

2. Equipment list;

1.3 Test equipment

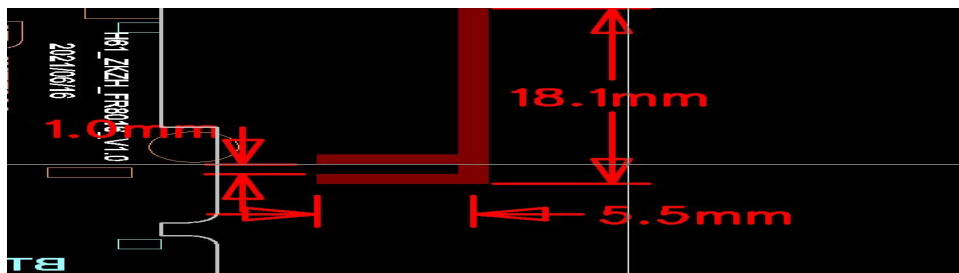
Equipment	Model No.	Serial No.	Manufacturer	Calibration date	Next calibration date
16 probe microwave chamber	3*3*2.5	RFI-LAB-RF-A00	SUNYIELD	2021.3.15	2023.3.14
Network Analyzer	E5071C	RFI-LAB-RF-A02	Agilent	2022.4.29	2023.4.28
Network Analyzer	E5071C	RFI-LAB-RF-C02	KEYSIGHT	2022.4.29	2023.4.28

3. Test setup diagram;



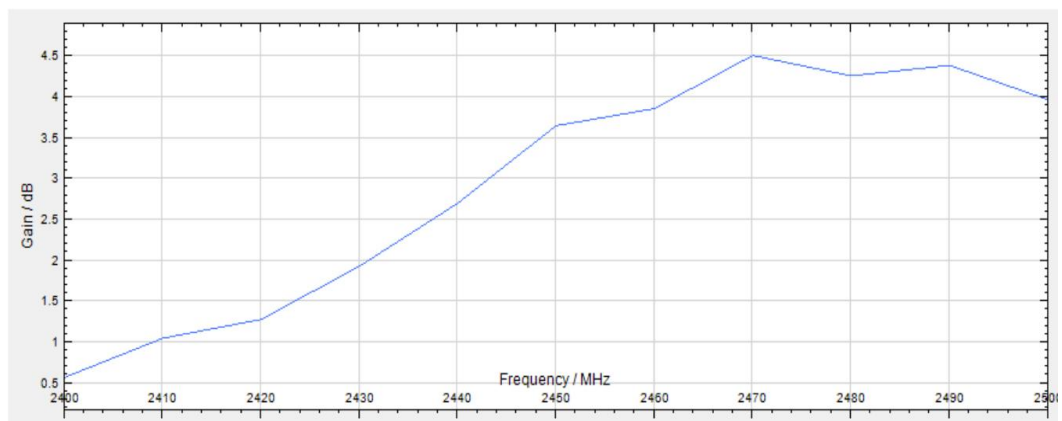
4. Test data

4.1.1 Bluetooth Antenna physical size

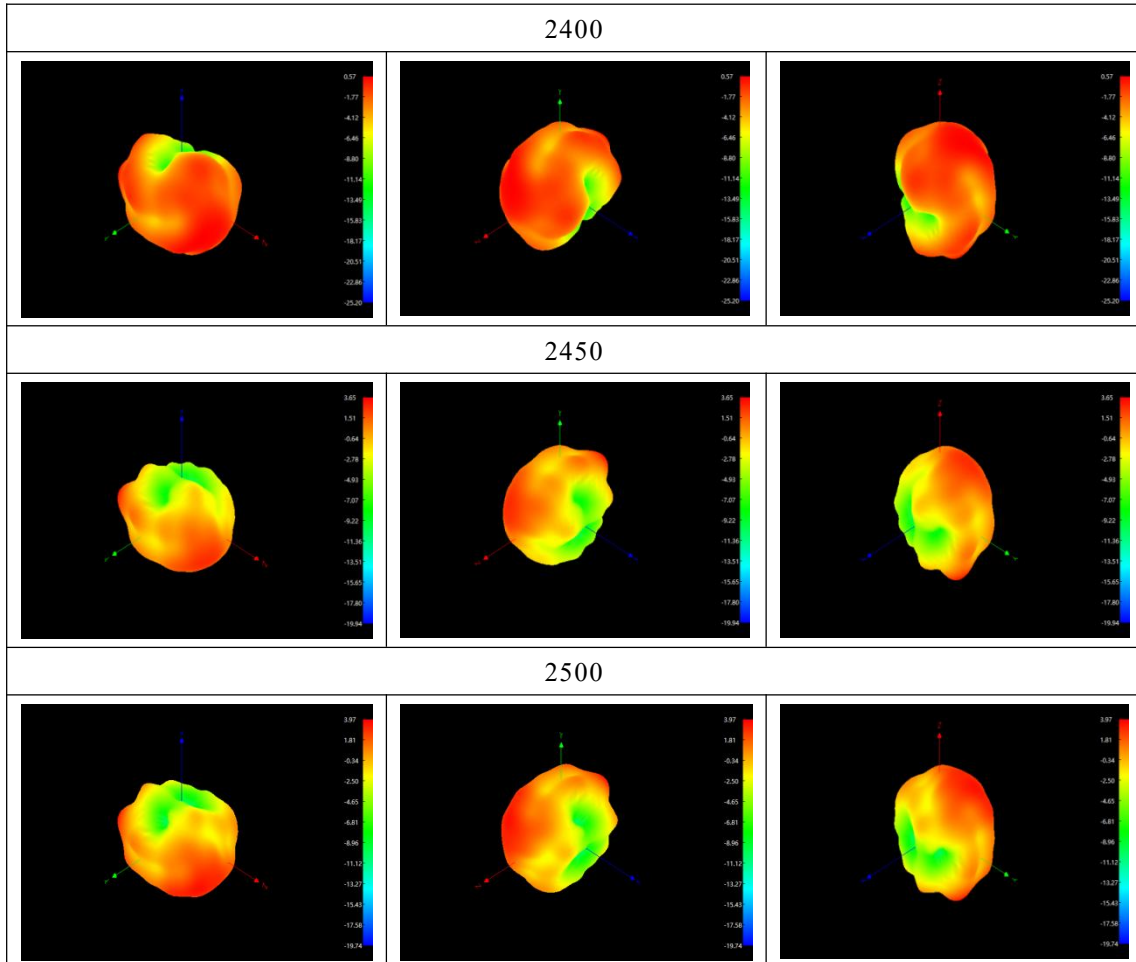


4.1.2 Bluetooth Antenna type: PCB antenna

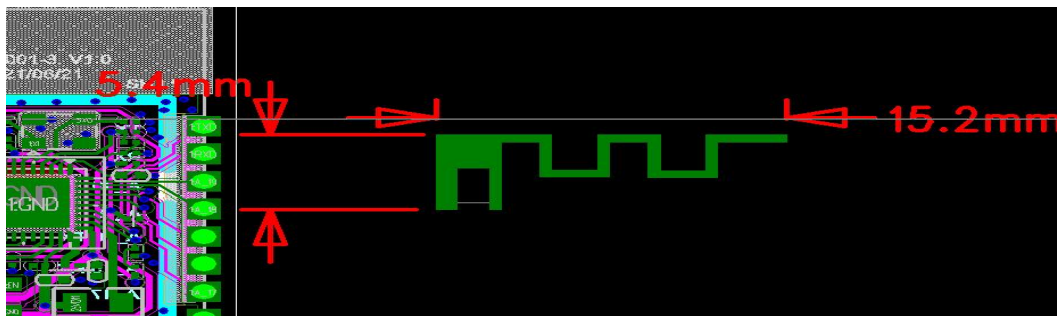
Frequency / MHz	Gain/ dB
2400	0.57
2410	1.05
2420	1.28
2430	1.93
2440	2.7
2450	3.65
2460	3.86
2470	4.51
2480	4.26
2490	4.39
2500	3.97



4.1.3 Bluetooth antenna pattern pictuter



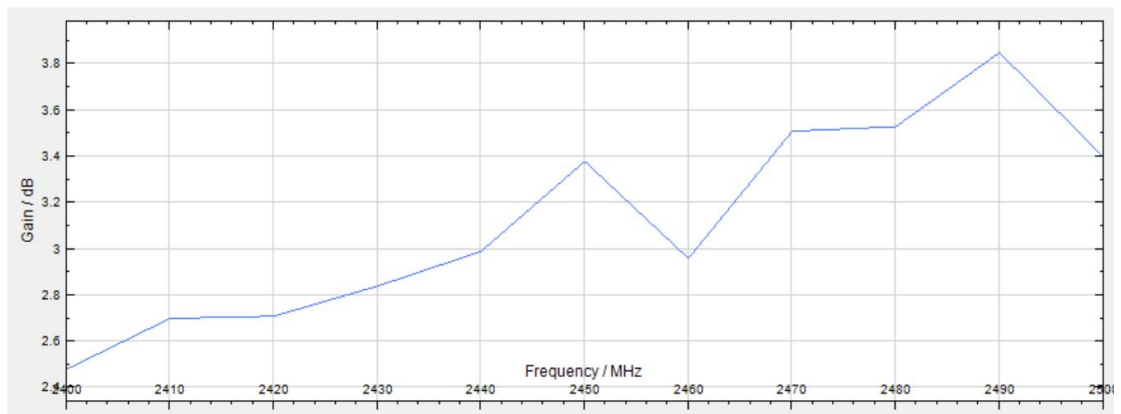
4.2.1 Wi-Fi Antenna physical size



4.2.2 WIFI Antenna type: PCB antenna

Frequency / MHz	Gain/ dB
2400	2.48
2410	2.7
2420	2.71
2430	2.84
2440	2.99
2450	3.38
2460	2.96
2470	3.51

2480	3.53
2490	3.85
2500	3.4



4.2.3 Bluetooth antenna pattern pictuter

