
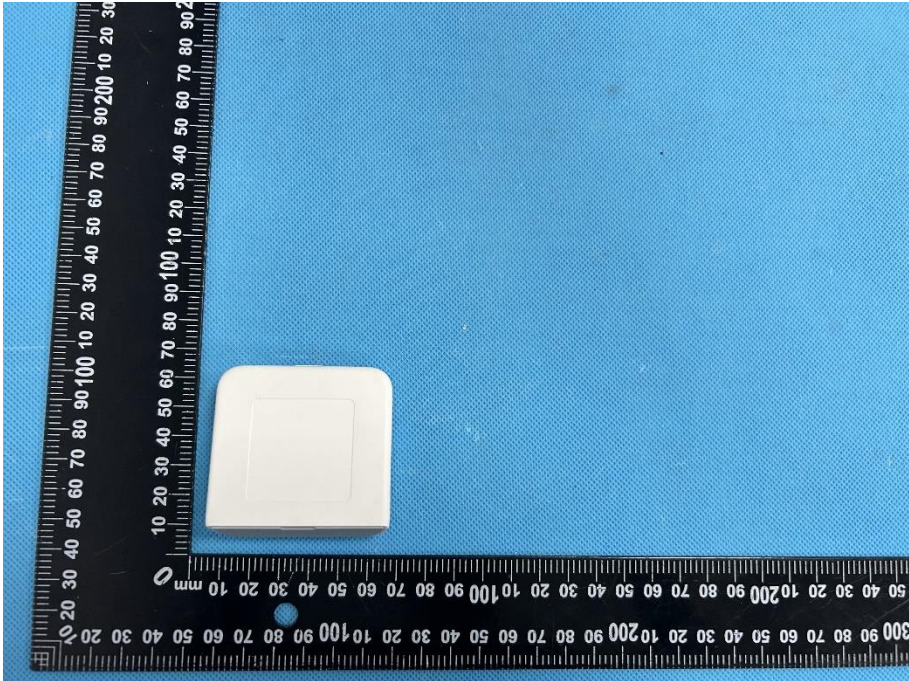
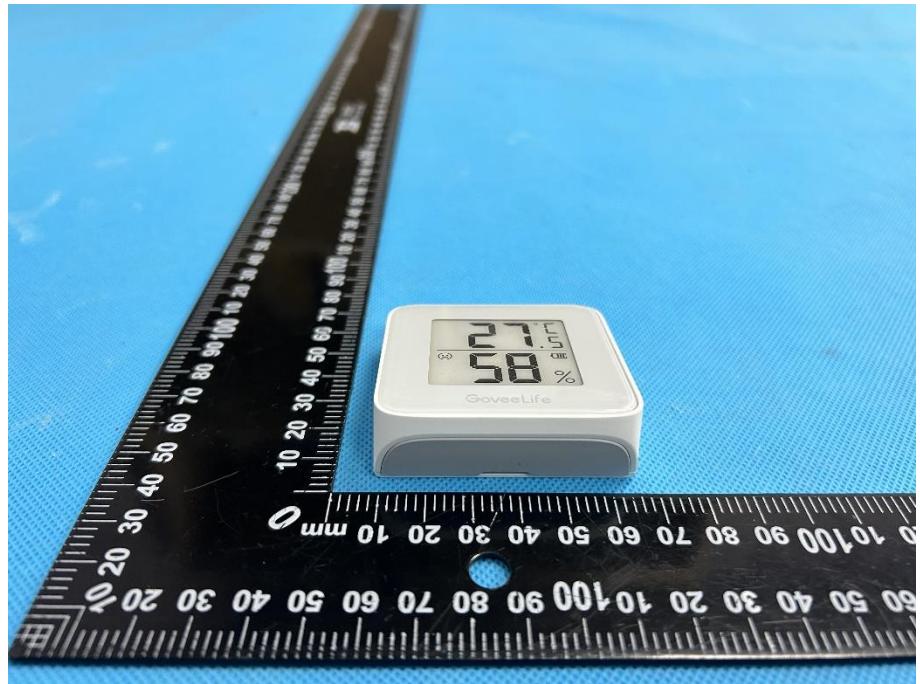


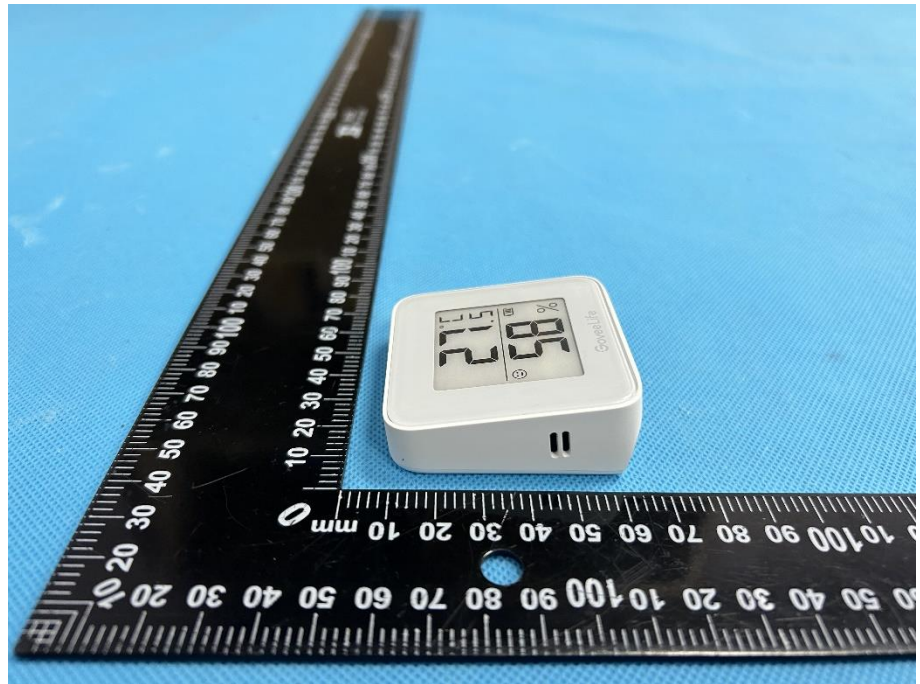
## EXHIBIT 2 - EUT EXTERNAL PHOTOGRAPHS

<p>EUT View 1</p>	 A digital thermometer with a white face and black display is positioned on a blue textured surface. The display shows a temperature of 27.5°C and a humidity of 58%. To the left of the thermometer is a black L-shaped ruler with white markings in millimeters and centimeters. The thermometer is placed at the corner of the ruler.
<p>EUT View 2</p>	 A white, square-shaped component is placed on a blue textured surface. To its left is a black L-shaped ruler with white markings in millimeters and centimeters. The component is positioned at the corner of the ruler.

EUT View 3

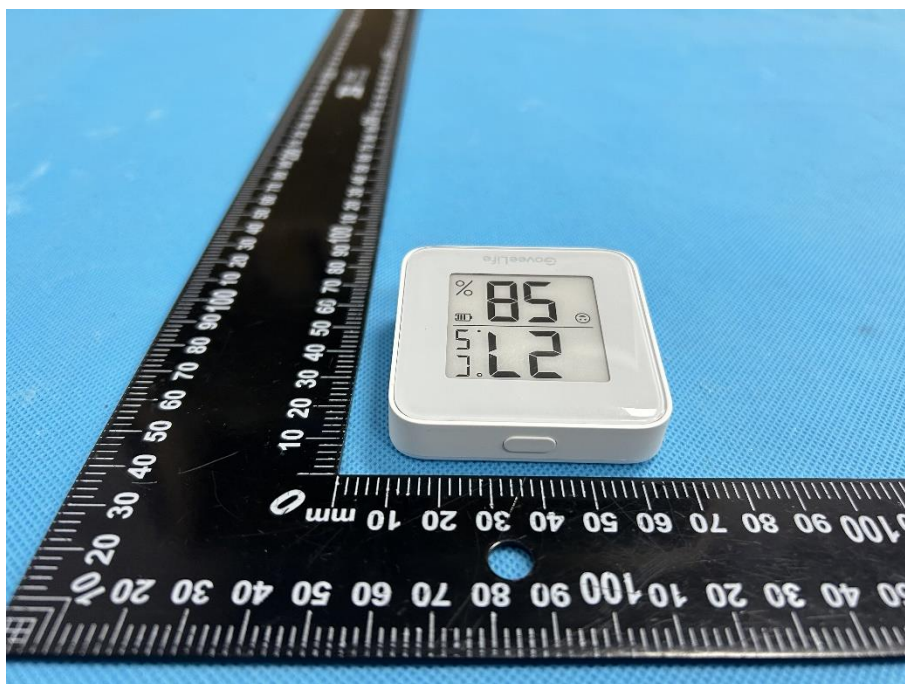


EUT View 4





EUT View 5



EUT View 6

