



---

# KIN D 2.0 INSTALLATION MANUAL





**READ CAREFULLY THIS ENTIRE MANUAL  
BEFORE STARTING ANY INSTALLATION**

## Table of Content

Package Contents	p. 3
Typical Configuration	p. 3
KIN D 2.0 Specifications	p. 3
KIN D 2.0 Installation	
1. Powering up KIN D 2.0	p. 4
2. Placement of KIN D 2.0	
3. Wires color coding	p. 5
4. DC Electric strike wiring example	
5. Riser Diagram	p. 6
6. Setup	
End User Acknowledgment	p. 6

### Note:

1. Specifications subject to change without notice.
2. Tech Support will only be provided where product installation guidelines have been followed.

## Package Content

KIN D 2.0 x1

Metallic PIN with double sided tape x 1

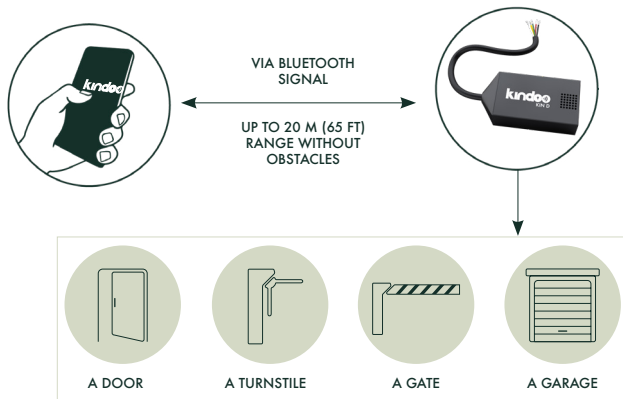
Wire caps x 5

Diode 1N4002 x1

## Typical Configuration

Internet required for phone

No Internet required for KIN D 2.0



## KIN D 2.0 Specifications

**Power Requirement** 12 - 24 V (DC or AC)

**KIN D 2.0 Max Current Draw** 200 mA

**Operating Temperature** -40 °C to 85 °C [-40 °F to 185 °F]

**Dimensions** 55 mm (L) x 27 mm (W) x 14 mm (H)

[2.16 in (L) x 1.06 in (W) x 0.55 in (H)]

**Weight** 30 g [1 oz]

**Emission Range** Up to 20 m [65 ft]

**Dry Relay**

**Contacts** 2 A

**Emission Frequency** 2.4 GHz

**Warranty** 1 year

## KIN D 2.0 Installation

### 1. Powering up KIN D 2.0

The KIN D 2.0 will operate on a DC or AC power supply (not provided) within the range of 12 to 24 volts. If the KIN D 2.0 and attached device is required to operate in the event of a power outage, a 'Battery Backed-Up Power Supply' is recommended. If the attached device requires more than 0.5 AMPS of current to operate, a heavy duty power supply is required. The KIN D 2.0 uses an embedded Relay with 2.0 amp rating.

This is the maximum current that can be switched reliably when connected to a 'NON-Inductive load' up to 30VDC. Electric strikes and magnetic locks are considered 'Inductive Loads'. For Inductive Loads operating on DC, it is important to have the provided diode attached at the locking device to remove the CEMF pulse that is generated when switching an 'Inductive Load' (see DC ELECTRIC STRIKE WIRING EXAMPLE below). For Inductive Loads operating on AC, a MOV must be used -not provided.

An external relay should be used on larger voltage and current requirements.

Use the provided 5 wire caps for wire connections. ALWAYS terminate any KIN D 2.0 unused wire with a wire cap.

### 2. KIN D 2.0 Placement

- 1- Place the KIN D 2.0 in a plastic enclosure or within the wall or door frame.
- 2- Place the KIN D 2.0 in a dry place with normal ambient temperatures.

To avoid any attenuation and for proper operation DO NOT place the KIN D 2.0 behind electrical equipment such as card reader, screens, etc...

DO NOT place the KIN D 2.0 behind metallic obstacles or behind UV coated glass or reflective glass.

3- Once the KIND 2.0 is placed, ALWAYS test its operational range. When issuing a command, the KINDOO application will inform you if the KIND 2.0 signal is weak and the application will not emit the command. Always verify that the range within which the KINDOO application allows you to issue the command is an acceptable operational range for your installation. If not, kindly change the KIND 2.0 placement in a way that reduces obstacles between the KIND 2.0 and the phone of the users.

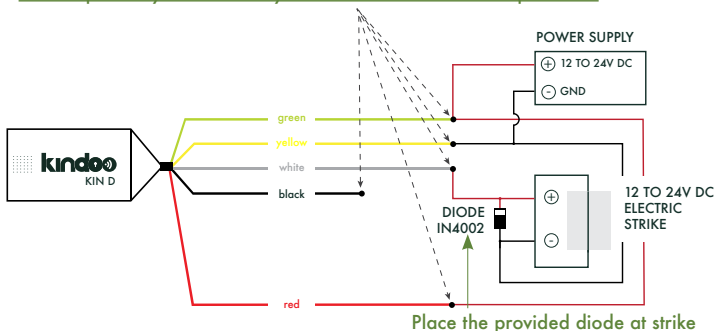
For installations where the KIND 2.0 is hidden, you may use the provided PIN and double sided tape to affix the PIN in a visible location at the same level of the KIND 2.0. The PIN is simply a visual marker that helps users know where the KIND 2.0 is located and does not serve any other function.

### 3. Wires Color Coding

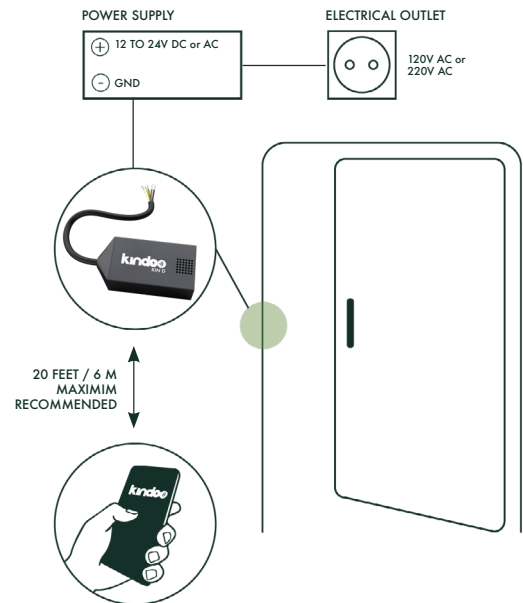
Green and yellow wires should be connected to a 12V to 24V DC or AC power supply  
 The Red wire is the Common (C) (typically 12V to 24V DC or AC)  
 The White wire is Normally Open (NO)  
 The Black wire is Normally Connected (NC)

### 4. DC Electric strike wiring example

Use the 5 provided wire caps to connect wires.  
Most importantly terminate any unused wire with a wire cap as well.



### 5. Riser Diagram



### 6. Setup

Use the KINDOO MOBILE application to create your type D site and start setting up KIND 2.0 devices.

### End User Acknowledgement

When using KINDOO and any related hardware or software, you fully agree to all the terms and conditions of the KINDOO GENERAL TERMS AND CONDITIONS defined on our website:

[www.kindoo.tech/generaltermsandconditions.html](http://www.kindoo.tech/generaltermsandconditions.html)

If you do not agree with any of the terms and conditions, please return the product in its original unused condition.



KINDOO is a product of KINDOO LLP  
7-2070 Harvey Avenue 163, Kelowna, V1Y 8P8, Canada

NOTE: This equipment has been tested and found to comply with the limits for a Class B digital device, pursuant to part 15 of the FCC Rules. These limits are designed to provide reasonable protection against harmful interference in a residential installation. This equipment generates uses and can radiate radio frequency energy and, if not installed and used in accordance with the instructions, may cause harmful interference to radio communications. However, there is no guarantee that interference will not occur in a particular installation. If this equipment does cause harmful interference to radio or television reception, which can be determined by turning the equipment off and on, the user is encouraged to try to correct the interference by one or more of the following measures:

- Reorient or relocate the receiving antenna.
- Increase the separation between the equipment and receiver.
- Connect the equipment into an outlet on a circuit different from that to which the receiver is connected.
- Consult the dealer or an experienced radio/TV technician for help

Changes or modifications not expressly approved by the party responsible for compliance could void the user's authority to operate the equipment.

This device complies with Part 15 of the FCC Rules. Operation is subject to the following two conditions:

- (1) this device may not cause harmful interference, and
- (2) this device must accept any interference received, including interference that may cause undesired operation.

This device contains licence-exempt transmitter(s)/receiver(s) that comply with Innovation, Science and Economic Development Canada's licence-exempt RSS(s). Operation is subject to the following two conditions:

- (1) This device may not cause interference.
- (2) This device must accept any interference, including interference that may cause undesired operation of the device.

L'émetteur/récepteur exempt de licence contenu dans le présent appareil est conforme aux CNR d'Innovation, Sciences et Développement économique Canada applicables aux appareils radio exempts de licence. L'exploitation est autorisée aux deux conditions suivantes :

- (1) L' appareil ne doit pas produire de brouillage;
- (2) L' appareil doit accepter tout brouillage radioélectrique subi, même si le brouillage est susceptible d' en compromettre le fonctionnement.