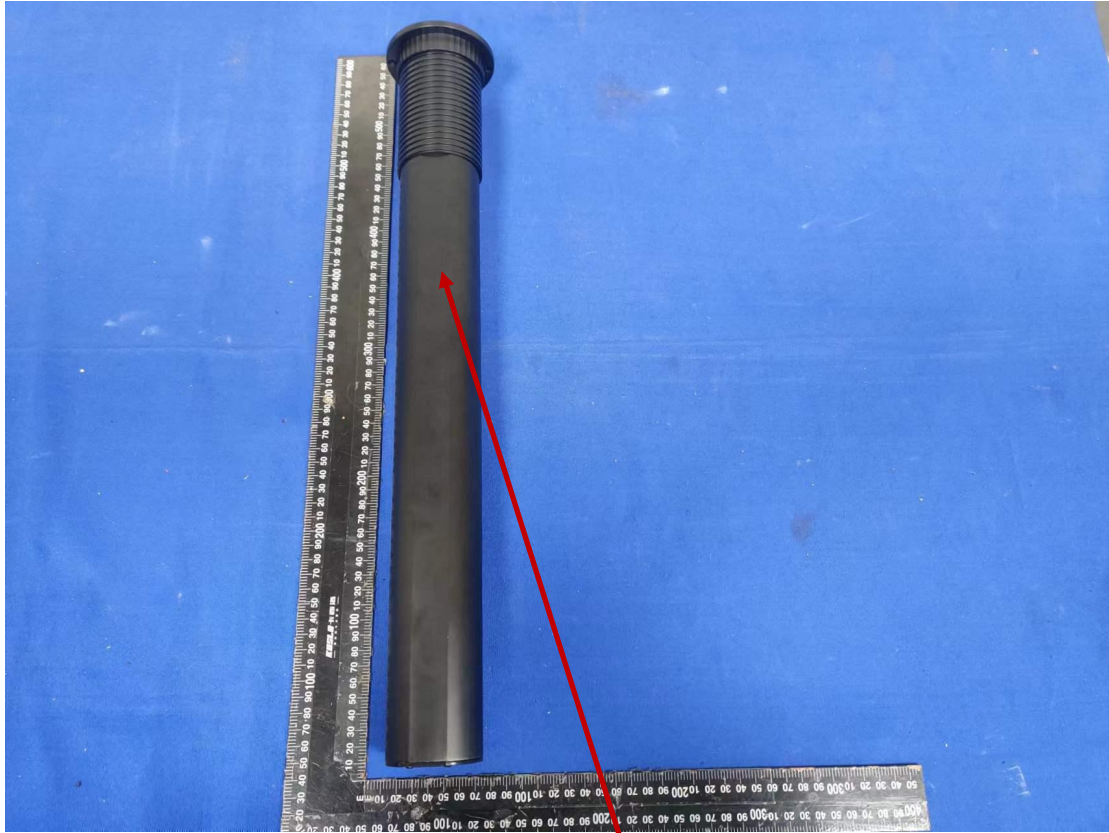


Lable:



motorised pop up sockets

Model Number: LEAVEANDRY-22-V6.1

FCC ID: 2A7T9-LEAVEANDRY-22

Input: 100V-240V~ 50/60Hz Max 15A Output: 10W Max

This device complies with part 15 of the FCC Rules. Operation is subject to the following two conditions: (1) This device may not cause harmful interference, and (2) this device must accept any interference received, including interference that may cause undesired operation.

