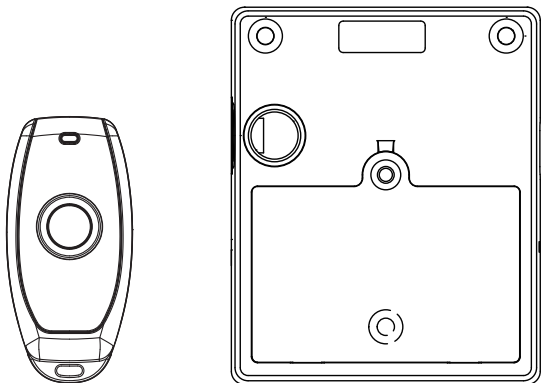


REMOTE CONTROL CABINET LOCK

USER MANUAL



Feature

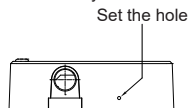
- 1.Remote unlocking
- 2.Low power consumption and long battery life
- 3.Low battery warning
- 4.Support external emergency power supply

1. How to bind the lock body

→Press the settings button on the lock body, “Beep”, and press the remote control button within 5 seconds.

→“Beep,beep” two sounds, the remote control is bound.

→Note: Multiple remotes can be bound by one lock body.



2. Remote control unlocking (within 10M)

→Press the remote unlock button once, the red light on, unlocking, and lock automatically after 4 seconds.

→If the remote control is not bound, press the unlock button, the red light on, and the lock body will not respond.

→Press the unlock button in the unlocked state, and the lock will delay for 4 seconds before locking.

3.How to unbind the remote control

→Press the lock body setting switch for 5 seconds, “Beep,beep” five sounds, initialization successful.

4.Low battery alarm

→Remote control low voltage alarm: when the remote control indicator light is dark or not bright, or when the lock is not sensitive, the remote control power is insufficient, please replace the battery immediately.

Battery type: 3V button battery, CR2032.

→Lock body low voltage alarm:In case of voltage less than 3.8V , it will unlock with 5 “Beep” .Please replace the battery in time.

Battery type: 3*AAA alkaline batteries , prohibit the use of carbon batteries.

5.Automatic unlocking function

→When the lock body battery is below 3.6V for a long time, it will automatically unlock.

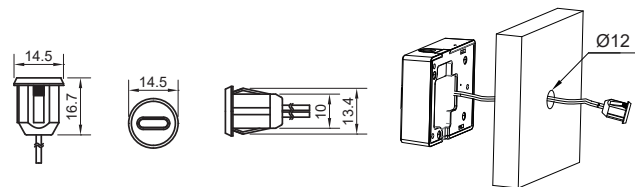
Notes :

→After installing the lock body, please use the remote control to unlock it once and confirm that the unlocking is normal;

→Keep the remote control properly and never put it in the drawer or cabinet of the lock.

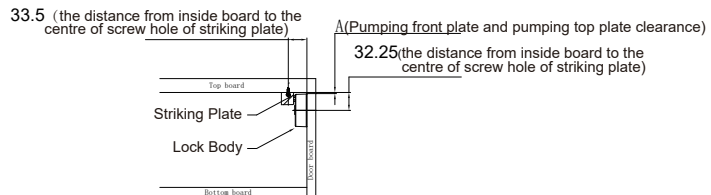
TYPE-C External diagram

1. To drill a $\varnothing 12$ MM mounting hole in the center of the mounting surface of the lock body within 80MM;
2. Insert the external connection into the mounting hole;
3. Then connect the external connection to the socket behind the lock body, arrange the connecting cable, and finally install the lock body.

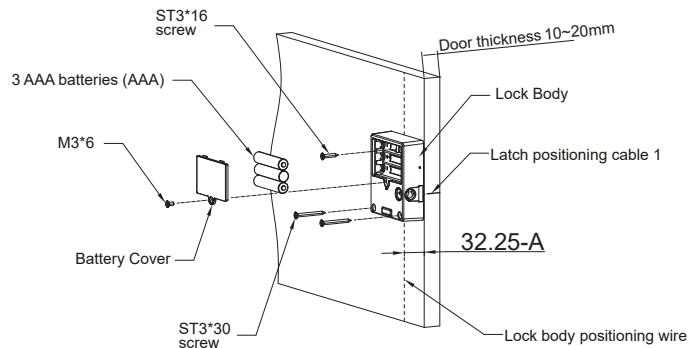


Cabinet of Drawers installation guide

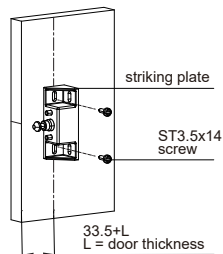
1. Lock body and latch positioning size chart



2. Connect the lock body, (Tide up the wire not crush), fix lock body by screw ST3X16 and screw ST3X16.

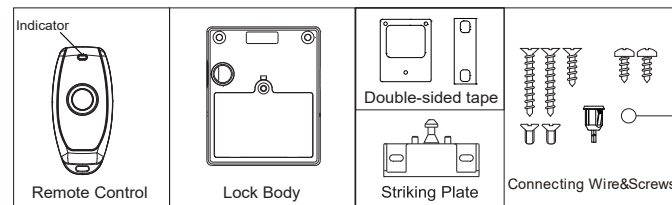


3. Fix the striking plate by screw ST3.5*14 (Make sure latch works well)



Picture 3

COMPONENT



INSTALLATION DRAWING



Follow the drawing to drill the hole

FCC Warning Statement: Changes or modifications to this unit not expressly approved by the party responsible for compliance could void the user's authority to operate the equipment. This equipment has been tested and found to comply with the limits for a Class B digital device, pursuant to Part 15 of the FCC Rules. These limits are designed to provide reasonable protection against harmful interference in a residential installation. This equipment generates, uses and can radiate radio frequency energy and, if not installed and used in accordance with the instructions, may cause harmful interference to radio communications.

However, there is no guarantee that interference will not occur in a particular installation. If this equipment does cause harmful interference to radio or television reception, which can be determined by turning the equipment off and on, the user is encouraged to try to correct the interference by one or more of the following measures:

- Reorient or relocate the receiving antenna.
- Increase the separation between the equipment and receiver.
- Connect the equipment into an outlet on a circuit different from that to which the receiver is connected.
- Consult the dealer or an experienced radio/TV technician for help.

This device complies with Part 15 of the FCC Rules. Operation is subject to the following two conditions: (1) this device may not cause harmful interference, and (2) this device must accept any interference received, including interference that may cause undesired operation.

FCC Radiation Exposure Statement

The device has been evaluated to meet general RF exposure requirement. The device can be used in portable exposure condition without restriction.