

# Kids Phone Watch Instruction

## Content

1 Get Started.....	2
1.1 Power On/Off.....	2
1.2 Charging.....	3
1.3 Installed a SIM card.....	3
2 Functions.....	3
2.1 The Screen display in standby mode.....	3
2.2 Contacts.....	4
2.3 Quick Dial.....	4
2.4 Camera.....	5
2.5 Album.....	5
2.6 Record.....	6
2.7 Alarm.....	6
2.8 Calculator.....	7
2.9 Game.....	7
2.10 Set up.....	10
2.11 Music.....	11
3 Hardware Specifications.....	11
4. Package Contents.....	12
5 FAQ.....	12


# KIDS PHONE WATCH USER MANUAL




\*Note: The function of this product could be subject to change. For the functional modification that will not affect the use of this product, this manual will not be revised. Thank you for your understanding.

## 1Get Started

### 1.1 Power On/Off

Power On: Press and hold the power button 

Shutdown: Press and hold the power button 

\*Before switching on the watch, make sure that the battery is properly installed in the device.

\* If the device fails to turn on, this could be caused by low battery. Please check the battery if correct installed and recharging the device for at least 20 minutes.

## 1.2 Charging

Remove the silicone plug on the USB charging port, and then connect the Micro-USB end of the cable to the watch and the other end to the USB charger.

\*After the charger is plugged to the power socket, the power icon at the top right of the screen will start scrolling, indicating that it is in charging mode. The power icon will stop scrolling with a full battery icon when fully charged.

## 1.3 Installed a SIM card

Remove the rear cover and battery of the watch first. Then follow the direction of the symbol and insert the Micro-SIM card into the slot. Finally, install the battery and back cover in sequence.

\*The SIM card must support 2GGSM, otherwise the function of communication will not be available!

\*This phone watch doesn't support LBS and GPS tracking function, it doesn't need download APP

## 2 Functions

### 2.1 The Screen display in standby mode



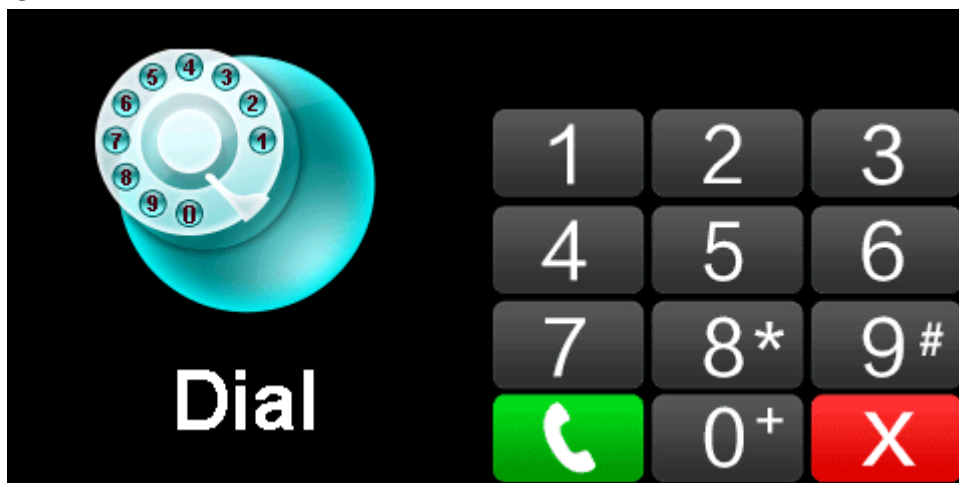
## 2.2 Contacts



Slide to the left or right in the standby interface to enter the main menu, select contacts and click to enter, you can select Dad, Mother or others, click SET NUMBER, enter the number input interface, enter the corresponding phone number, click Save, then record in the phone book. Click the avatar on the interface to call out the corresponding call.

Note: maximum 10 contacts can be stored

## 2.3 Quick Dial



In the main menu, select <phone> and click to enter. After entering the number on the dialpad interface, press the dial button to call out the call directly.

## 2.4 Camera



In the main menu, select Camera and click to enter, you can enter the preview interface, click the left button to take the photo, and click right button to return. The default storage is in <Memory card>.

## 2.5 Album



In the main menu, select <Album> and click to enter, you can view the saved photos.

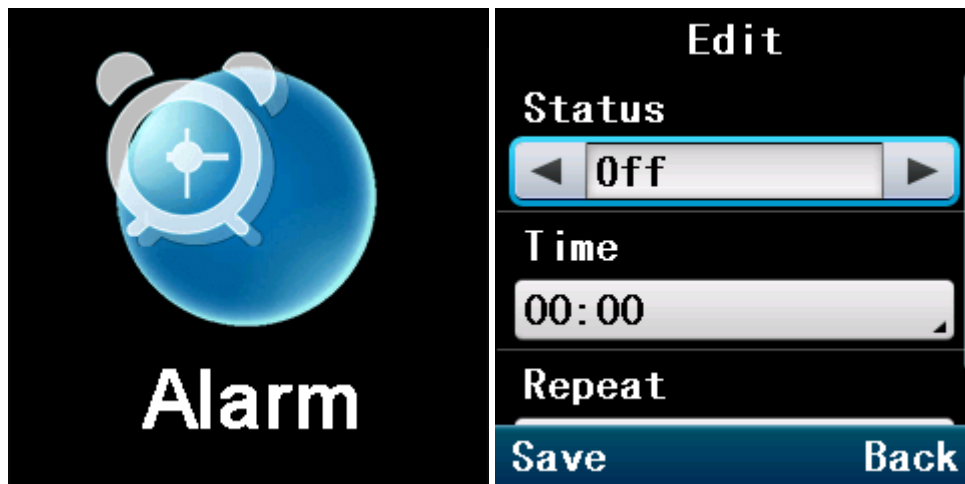
## 2.6 Record



In the main menu, select <Record> and click to enter, you can record.

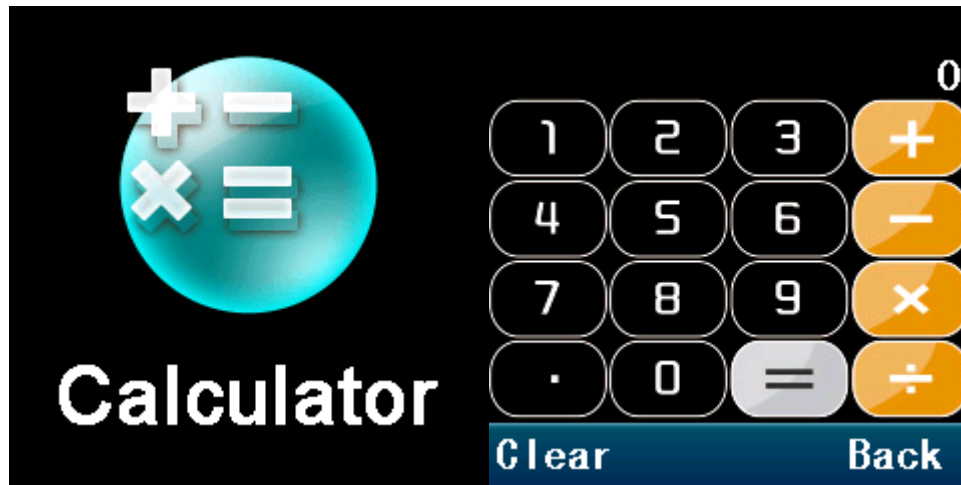
Note: A memory card needs to be inserted.

## 2.7 Alarm



In the main menu, select <Alarm clock> and click to enter, you can set the alarm, and support up to three different alarms. You can set the switch, time and repeat period.

## 2.8 Calculator

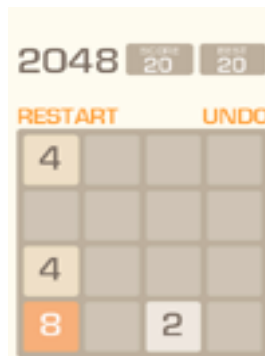


In the main menu, select the <Calculator> and click to enter, you can use the simple calculator to calculate.

## 2.9 Game

Seven games are installed in the watch.

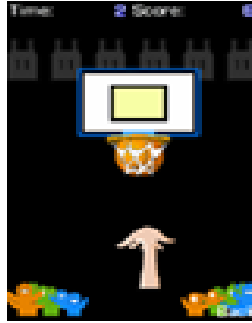
### ◆ 2048



2048 is a popular digital game.

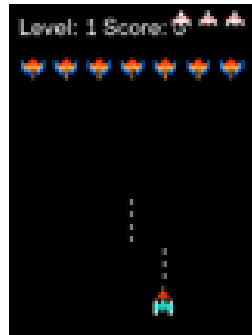
How to play: Swipe up, down, left or right to move the tiles across the board. The tiles will slide in the swipe direction; meanwhile a new tile will emerge randomly in the board. When the tiles with the same number meet, they will merge into one tile.

### ◆ Basketball Shoot master



How to play: Press the basketball to shoot, When the backboard is going to move to the middle, control to shot.

◆ **Bee War**



Protect your planet from enemy attacks. Destroy them all before they reach your base.

How to play: Click on the screen to move the fighter to shoot, you need to hit twice to destroy the enemy, score as much as possible! You have three chances.

You can set the “Easy”, “Normal” and “Hard” modes to turn music on or off and view scores.

◆ **Pinball Hit Bricks**

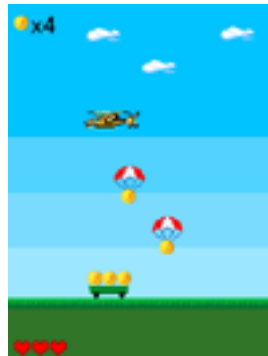


How to play: Destroy all bricks to progress to the next level. White bricks give a special 3-ball bonus. Blue bricks need to be hit 2 times. Score as many points as you can!

You can set the “Easy”, “Normal” and “Hard” modes to turn music on or off and view scores.



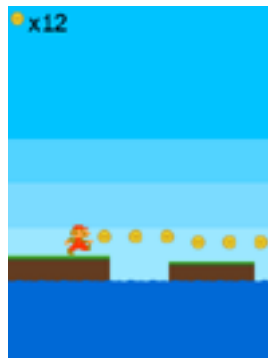
◆ **Car Grab Goods**



How to play: Click on the screen to move the car and catch as many airdrops as possible. You have three chances.

You can set the “Easy”, “Normal” and “Hard” modes to turn music on or off and view scores.

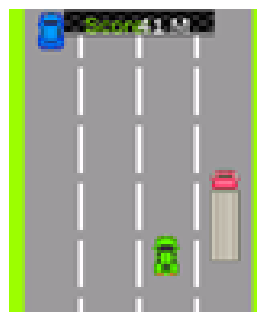
◆ **Mario eat gold**



How to play: You need to collect as many coins as possible and jump over platforms, Don't fall or hit the columns, or you'll die! Press once to jump, press twice for a big jump.

You can set the “Easy”, “Normal” and “Hard” modes to turn music on or off and view scores.

◆ **Ultimate racing**



How to play: Press and hold the car to move around to switch lanes. The car in front may drop gold coins and eat as much gold coins as possible. To avoid a crash, you only have one chance. You can turn music on or off and view scores.

## 2.10 Set up



The following items can be set in the settings

◆ **Language**

Different languages can be set.

◆ **Time And Date**

You can set the time and date of your watch.

◆ **Call log**

You can view the watch's call history.

◆ **File manager**

You can go to File Management to view the files in your watch.

◆ **Silent Profile**

The watch will be in silent mode when turned on.

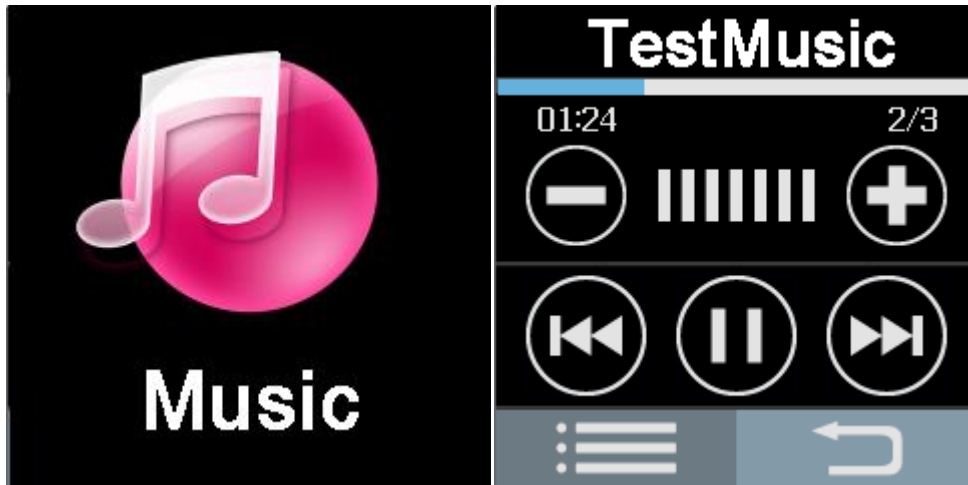
◆ **Version Info Summary**

The software version number can be queried.

◆ **Restore settings**

The factory settings can be restored

## 2.11 Music



1. Copy songs via USB connection must be in power-off state
2. Only the music files in "My music" folder can be played.

## 3 Hardware Specifications

No.	Item	Parameter/Model
1	CPU model	MT6261
2	Communication system	GSM
3	Frequency band	850MHz/900MHz/1800MHz/1900MHz Quad Band
4	Screen	1.54 inch; IPS HD colored touch screen
5	Resolution	240*240
6	Camera	300,000 pixels
7	Battery	480mAh lithium polymer battery
8	Internal memory	32MB
9	Cover material	Plastic (ABS+PC)
10	Strap material	Dow Corning food grade silicone
11	Watch size	52.4mm*40.7mm*13.8mm
12	Watch weight	43g
13	Optional languages	English (default), French, Spanish, German

## 4. Package Contents

No.	Item	Quantity
1	Cell Phone Watch (with battery)	1
2	USB cable	1
3	Instruction Manual	1

\* Please check the contents in the checklist carefully. If any of them is missing, please contact the seller in time. Thank you for choosing our product!

## 5 FAQ

Q: Is this watch waterproof? Can I immerse it in water?

A: This watch has an IPX5 water resistant rating, which can withstand water coming from a jet, but you cannot immerse it in water.

Q: What type of SIM card is suitable for this watch?

A: The watch only supports the SIM card with 2G GSM communication standard. To make a phone call, the voice call service of the SIM card must be enabled. Please contact local communication operator for details.

Q: Does the watch emit strong radiation? Will it cause harm to health?

A: The watch has been tested by an authoritative third-party testing agency. The radiation is minimal, which is almost 0 and far lower than international standard. It will not cause any harm to human body. No need to worry about this issue and enjoy it!

Q: Can I use the watch without a SIM card?

A: If the watch does not have a SIM card, the communication-related functions will be disabled, such as call and SMS.

Q: What are the requirements for the charger?

A: Please use a standard USB charger for the watch. It is recommended to use a mobile phone charger and avoid charging the device through the USB port of a computer.

Q: How long does it take to fully charge the watch?

A: It might take about 2 hours to charge the watch. There is a power icon on the watch which indicates the current power. When the power is low, please charge it immediately.

Q: Will it have any negative impact if the watch hasn't been used for a long time?

A: The power of the battery will drain completely if watch will not be used for a long time. Before using it again, charge the device for 20 minutes first.

Q: How safe is the battery? Will it explode or cause a fire?

A: The watch adopts lithium polymer battery, which will not cause any safety issues such as overheating, explosion or fire. Moreover, the stress tolerant structure will ensure the safety of the battery!

Q: Is there any privacy leakage risk such as leaking personal information or location when using the watch?

A: This children's cell phone watch is different from other watches with the positioning function. It is not controlled by any APP, nor can it be connected to the Internet; therefore it is impossible to be hacked, which will ensure the safety of your personal data.

#### FCC Warning:

This equipment has been tested and found to comply with the limits for a Class B digital device, Pursuant to part 15 of the FCC Rules. These limits are designed to provide reasonable protection against harmful interference in a residential installation. This equipment generates, uses and can radiate radio frequency energy and, if not installed and used in accordance with the instructions, may cause harmful interference to radio communications. However, there is no guarantee that interference will not occur in a particular installation. If this equipment does cause harmful interference to radio or television reception, which can be determined by turning the equipment off and on, the user is encouraged to try to correct the interference by one or more of the following measures:

- Reorient or relocate the receiving antenna.
- Increase the separation between the equipment and receiver.
- Connect the equipment into an outlet on a circuit different from that to which the receiver is connected.
- Consult the dealer or an experienced radio/TV technician for help.

Caution: Any changes or modifications to this device not explicitly approved by manufacturer could void your authority to operate this equipment.

This device complies with part 15 of the FCC Rules. Operation is subject to the following two conditions:

- (1) This device may not cause harmful interference, and
- (2) this device must accept any interference received, including interference that may cause undesired operation.

#### Specific Absorption Rate (SAR) information:

This Kids smart watch meets the government's requirements for exposure to radio waves. The guidelines are based on standards that were developed by independent scientific organizations through periodic and thorough evaluation of scientific studies.

The standards include a substantial safety margin designed to assure the safety of all persons regardless of age or health. FCC RF Exposure Information and Statement the SAR limit of USA (FCC) is 1.6 W/kg averaged over one gram of tissue. Device types: Kids smart watch has also been tested against this SAR limit. This device was tested for 0 mm for body-worn and 10mm for face up position respectively between the unit and the body of the user. To maintain compliance with FCC RF exposure requirements, use accessories that maintain an 0 mm for body-worn and 10mm for face up position respectively between the user's body and the back of the Kids smart watch. The use of belt clips, holsters and similar accessories should not contain metallic components in its assembly. The use of accessories that do not satisfy these requirements may not comply with FCC RF exposure requirements, and should be avoided.