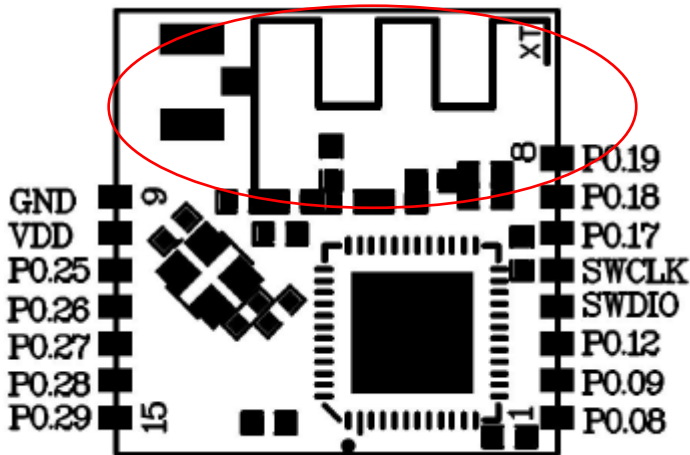
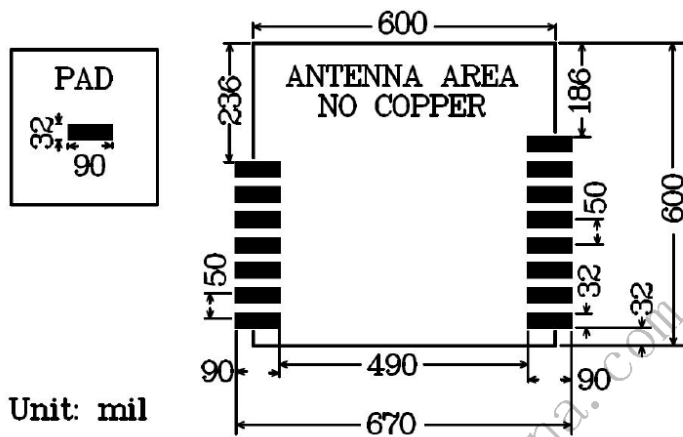


## Antenna Information



### Antenna Block diagram:



### Bluetooth antenna test data:

Antenna Frequency Range: 2400-2500MHz

Antenna Type: PCB

Antenna VSWR:  $\leq 2.0$

Antenna Peak Gain: Maximum 0dBi @2450MHz



Antenna Impedance :50Ω

Antenna Length: 28.5mm

Antenna Manufacturer: Shanghai Xuntong Electronic Technology Co., Ltd

Antenna Gain:

Frequency(MHz)	Maximum Gain(dBi)
<b>2450</b>	<b>0</b>
2400	-0.46
2500	-1.41

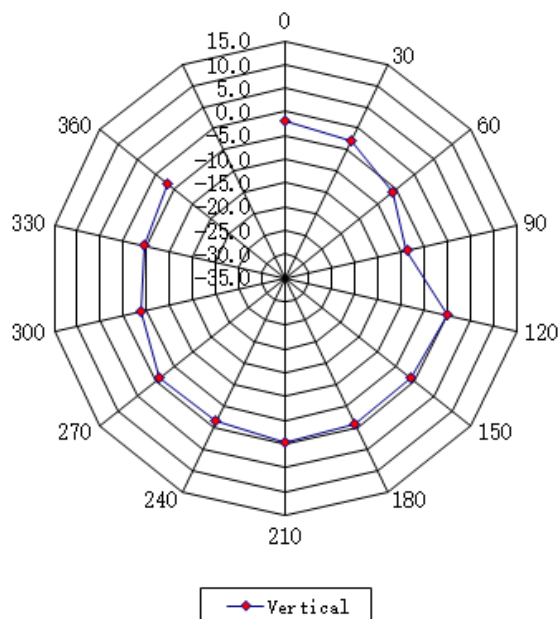
Appendix

Test Diagram & Data

1. Frequency: 2450MHz

Turn Table	SG (dBm)	Reading Level A1 (dBm) 2450MHz	Substitution Level A2 (dBm) 2450MHz	Cable Loss (dB) 2450MHz	Antenna Gain (dBi) 2450MHz	Antenna Polarization
0	-10	-10.33	-3.50	2.00	-1.83	V
30	-10	-11.29	-3.50	2.00	-2.79	V
60	-10	-14.47	-3.50	2.00	-5.97	V
90	-10	-17.19	-3.50	2.00	-8.69	V
120	-10	-8.50	-3.50	2.00	0.00	V
150	-10	-9.66	-3.50	2.00	-1.16	V
180	-10	-9.42	-3.50	2.00	-0.92	V
210	-10	-8.78	-3.50	2.00	-0.28	V
240	-10	-9.91	-3.50	2.00	-1.41	V
270	-10	-9.56	-3.50	2.00	-1.06	V
300	-10	-12.22	-3.50	2.00	-3.72	V
330	-10	-12.87	-3.50	2.00	-4.37	V
360	-10	-11.64	-3.50	2.00	-3.14	V
Maximum		-8.50			0.00	

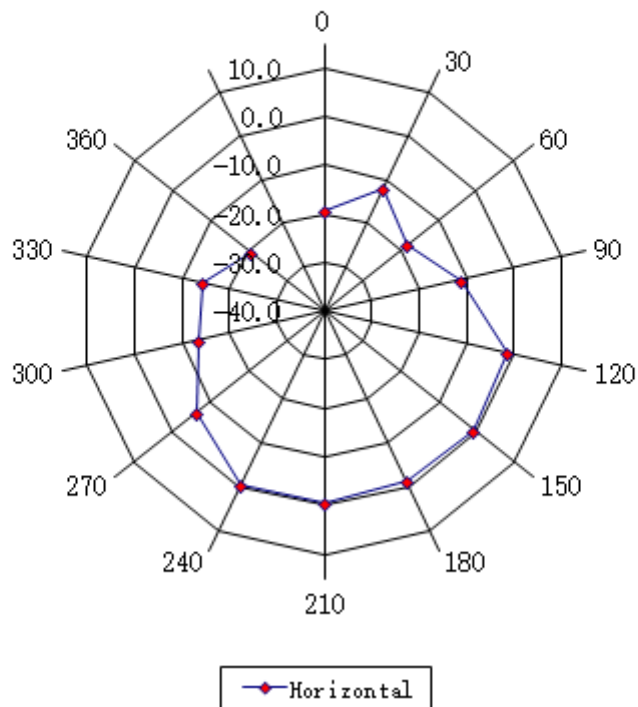
Vertical at 2450MHz





Turn Table	SG (dBm)	Reading Level A1 (dBm) 2450MHz	Substitution Level A2 (dBm) 2450MHz	Cable Loss (dB) 2450MHz	Antenna Gain (dBi) 2450MHz	Antenna Polarization
0	-10	-28.01	-3.50	2.00	-19.51	H
30	-10	-20.61	-3.50	2.00	-12.11	H
60	-10	-26.46	-3.50	2.00	-17.96	H
90	-10	-19.78	-3.50	2.00	-11.28	H
120	-10	-9.69	-3.50	2.00	-1.19	H
150	-10	-9.13	-3.50	2.00	-0.63	H
180	-10	-9.56	-3.50	2.00	-1.06	H
210	-10	-9.22	-3.50	2.00	-0.72	H
240	-10	-8.99	-3.50	2.00	-0.49	H
270	-10	-15.08	-3.50	2.00	-6.58	H
300	-10	-22.01	-3.50	2.00	-13.51	H
330	-10	-22.98	-3.50	2.00	-14.48	H
360	-10	-29.07	-3.50	2.00	-20.57	H
Maximum		-8.99			-0.49	

Horizontal at 2450 MHz



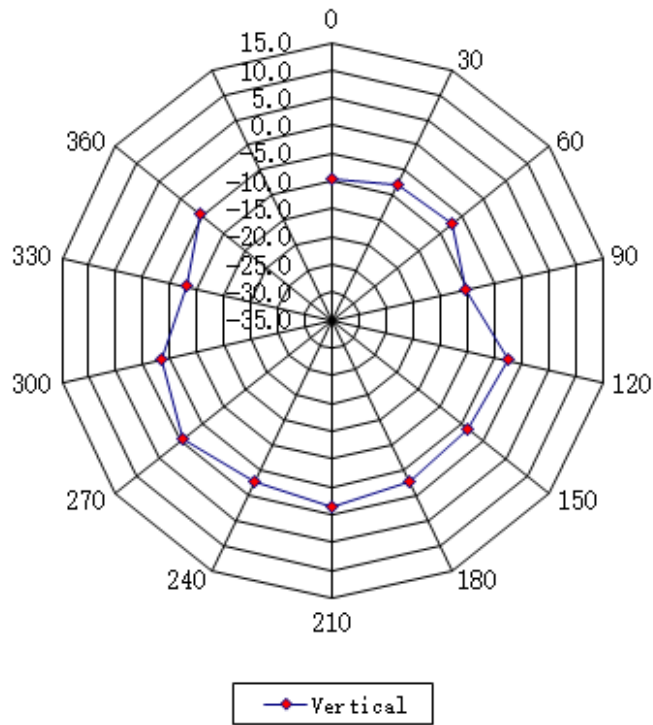
图表区

Test Diagram & Data

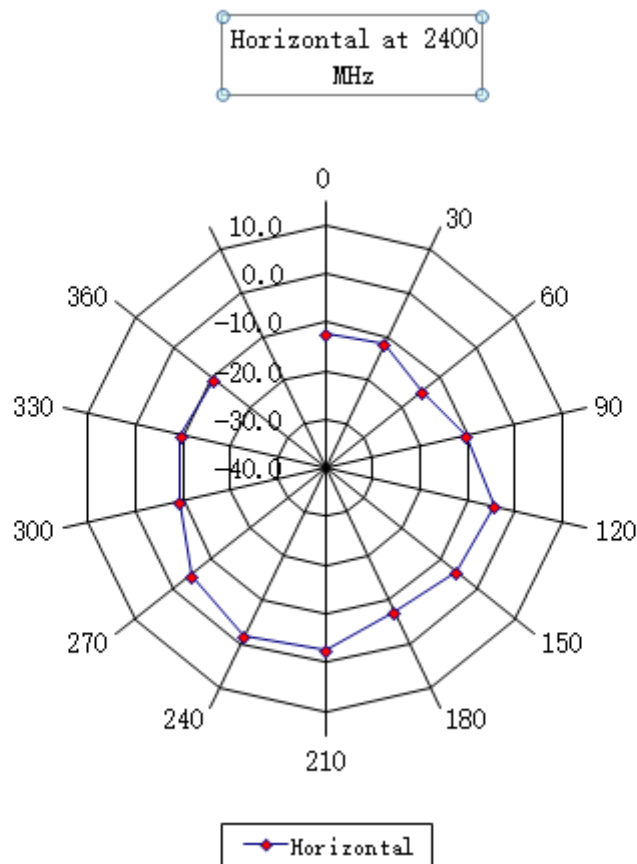
2. Frequency: 2400MHz

Turn Table	SG (dBm)	Reading Level A1 (dBm) 2400MHz	Substitution Level A2 (dBm) 2400MHz	Cable Loss (dB) 2400MHz	Antenna Gain (dBi) 2400MHz	Antenna Polarization
0	-10	-18.17	-3.50	2.00	-9.67	V
30	-10	-16.55	-3.50	2.00	-8.05	V
60	-10	-15.79	-3.50	2.00	-7.29	V
90	-10	-18.91	-3.50	2.00	-10.41	V
120	-10	-11.04	-3.50	2.00	-2.54	V
150	-10	-12.16	-3.50	2.00	-3.66	V
180	-10	-11.26	-3.50	2.00	-2.76	V
210	-10	-9.90	-3.50	2.00	-1.40	V
240	-10	-11.03	-3.50	2.00	-2.53	V
270	-10	-8.96	-3.50	2.00	-0.46	V
300	-10	-11.78	-3.50	2.00	-3.28	V
330	-10	-16.49	-3.50	2.00	-7.99	V
360	-10	-12.98	-3.50	2.00	-4.48	V
Maximum		-8.96			-0.46	

Vertical at 2400MHz



Turn Table	SG (dBm)	Reading Level A1 (dBm) 2400MHz	Substitution Level A2 (dBm) 2400MHz	Cable Loss (dB) 2400MHz	Antenna Gain (dBi) 2400MHz	Antenna Polarization
0	-10	-20.61	-3.50	2.00	-12.11	H
30	-10	-20.17	-3.50	2.00	-11.67	H
60	-10	-23.19	-3.50	2.00	-14.69	H
90	-10	-18.87	-3.50	2.00	-10.37	H
120	-10	-12.88	-3.50	2.00	-4.38	H
150	-10	-14.13	-3.50	2.00	-5.63	H
180	-10	-15.56	-3.50	2.00	-7.06	H
210	-10	-11.22	-3.50	2.00	-2.72	H
240	-10	-9.99	-3.50	2.00	-1.49	H
270	-10	-13.18	-3.50	2.00	-4.68	H
300	-10	-17.81	-3.50	2.00	-9.31	H
330	-10	-18.03	-3.50	2.00	-9.53	H
360	-10	-19.01	-3.50	2.00	-10.51	H
Maximum		-9.99			-1.49	

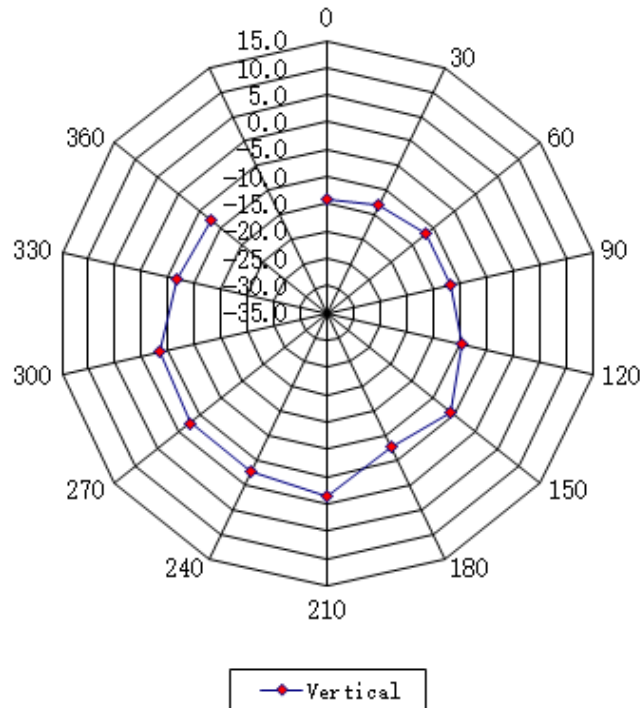


Test Diagram & Data

3. Frequency: 2500MHz

Turn Table	SG (dBm)	Reading Level A1 (dBm) 2500MHz	Substitution Level A2 (dBm) 2500MHz	Cable Loss (dB) 2500MHz	Antenna Gain (dBi) 2500MHz	Antenna Polarization
0	-10	-22.78	-3.50	2.00	-14.28	V
30	-10	-21.43	-3.50	2.00	-12.93	V
60	-10	-20.18	-3.50	2.00	-11.68	V
90	-10	-20.07	-3.50	2.00	-11.57	V
120	-10	-18.18	-3.50	2.00	-9.68	V
150	-10	-14.29	-3.50	2.00	-5.79	V
180	-10	-16.09	-3.50	2.00	-7.59	V
210	-10	-9.91	-3.50	2.00	-1.41	V
240	-10	-11.03	-3.50	2.00	-2.53	V
270	-10	-11.11	-3.50	2.00	-2.61	V
300	-10	-11.93	-3.50	2.00	-3.43	V
330	-10	-15.32	-3.50	2.00	-6.82	V
360	-10	-16.17	-3.50	2.00	-7.67	V
Maximum		-9.91			-1.41	

Vertical at 2500MHz





Turn Table	SG (dBm)	Reading Level A1 (dBm) 2500MHz	Substitution Level A2 (dBm) 2500MHz	Cable Loss (dB) 2500MHz	Antenna Gain (dBi) 2500MHz	Antenna Polarization
0	-10	-23.26	-3.50	2.00	-14.76	H
30	-10	-22.17	-3.50	2.00	-13.67	H
60	-10	-22.66	-3.50	2.00	-14.16	H
90	-10	-18.48	-3.50	2.00	-9.98	H
120	-10	-10.37	-3.50	2.00	-1.87	H
150	-10	-10.78	-3.50	2.00	-2.28	H
180	-10	-11.37	-3.50	2.00	-2.87	H
210	-10	-10.19	-3.50	2.00	-1.69	H
240	-10	-10.32	-3.50	2.00	-1.82	H
270	-10	-16.13	-3.50	2.00	-7.63	H
300	-10	-15.17	-3.50	2.00	-6.67	H
330	-10	-16.79	-3.50	2.00	-8.29	H
360	-10	-15.29	-3.50	2.00	-6.79	H
Maximum		-10.19			-1.69	

Horizontal at 2500MHz

