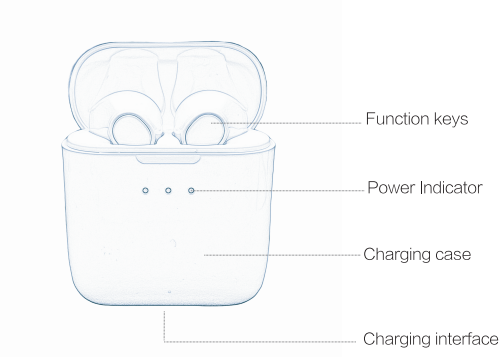


Part names

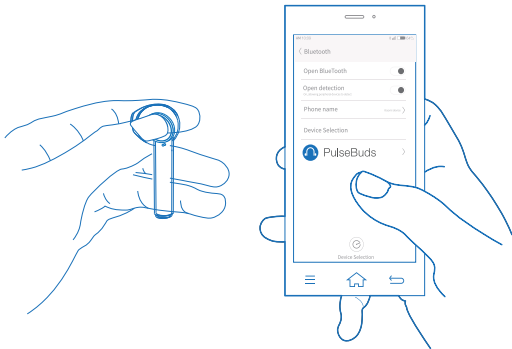


Specifications

Model: NEOPDZ
Bluetooth version:5.0
Working distance:10m
Play time: 4H
Charging time: about 1H
Charging interface: TYPE-C
Single earphone battery capacity:40mAh
Charging case battery capacity:650mAh

Pairing Your Earphone

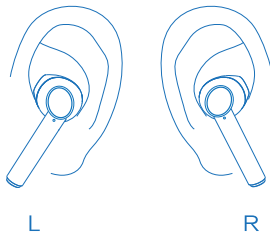
Pairing with phone: Open the charging case, the earphone will connect each other automatically ,earphone indicator light flashes 3-5 seconds, then turn on the mobile phone's Bluetooth search device, "PulseBuds" appears, click pairing. Pick up earphone from charging case and wear.



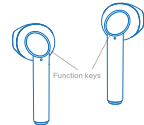
NOTICE

- Binaural mode, there will only be a " PulseBuds " on the phone, When you want to use a earbud, just take one out, If you want to use a dual earphone, take out another earbud, and the earphone will automatically connect.
- After successfully connecting for the first time, put the earbud back in the charging case to charge it, and then turn it on again,the earphone will automatically connect to the last connected device.
- If the product has not been used for a long time, please charge it first.
- If the device cannot find this Bluetooth earphone, please confirm whether the earphone is in pairing mode.

Pairing Your Earphone



One button operation



Call with earphone

R/L	Short press	Answer/ Hang up
R/L	Long press for 2 seconds	Incoming telegram: Reject

Listen to music with earphone

R/L	Short press	Play/Pause
R/L	3 Click	Wake up voice assistant
R	Long press for 3 seconds	Next song
L	Long press for 3 seconds	Previous song
R	Double-click the right earbud	Volume up
L	Double-click the left earbud	Volume down
R/L	Long press for 5 seconds	Turn on
R/L	Long press for 6 seconds	Turn off

Turn off and Reset

Turn off	Put the earphone back into the charging case,Close
Reset	Not connected: press the left and right eabuds function keys about 5 times in succession; Crash reset: long press the left and right earbuds for 8 seconds

Switch between Chinese and English prompt tone

R/L	When not connected,double-Click the earbud
-----	--

TIPS

- 1、 In binaural mode, covering the earphone with either hand can cause poor signal;
- 2、 Make sure the earphone and the connected device are within a valid connection range and there are not too many obstacles that interfere with the signal;
- 3、 It is normal for the earphone to be disconnected occasional-ly. Just like WiFi, occasionally the connection is unstable. It may be due to interference in signal transmission. Please wait a moment or change the location to resolve;
- 4、 When the earphone cannot be connected to the device, please check whether the earphone has power or is connected to other devices;
- 5、 The earphone cannot be connected to multiple devices at the same time. When changing the connected device, please perform the "Forget this device" operation on the last connected device.

Fault Table

1、 Bluetooth earphone cannot hear sound;
2、 The other side cannot hear the voice during the call;
3、 Unable to charge Bluetooth earphone

The following conditions will not provide free repair

- 1、 No warranty card or product maintenance label is damaged;
- 2、 Damage caused by self-disassembly
- 3、 Failure caused by water ingress or fall and human-made mechanical damage;
- 4、 Malfunction or damage caused by force majeure.

We apologize for any inconvenience caused by any typographical or translation errors.If the content is corrected later, please forgive us without notice.

Charging Your Earphone

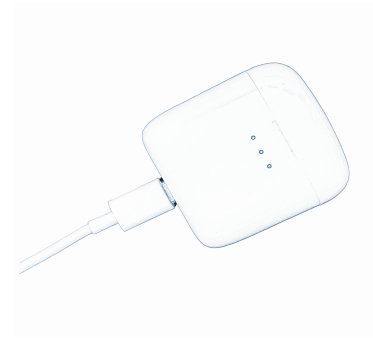
For the first time use, please fully charge the product.

Earphone charging

Please put the earbuds into the charging case, Charging: The indicator light on the earphone is always on, and the first power indicator (left earphone) and the third power indicator (right earphone) on the charging case are on for 10 seconds, and then jump to the power display. Full power: The white lights off

Charging case charging

Charging: The white lights flash
Full power: The white lights stay on



Welcome

Thank you for using the PulseBuds. We hope you will enjoy it!

Official package including
Earbuds *2
Charging case *1
Charging cable*1
User manual*1

Warnings

When charging the charging case of this product,to avoid damage to the charging case, please use the supplied standard data cable or a standard wireless charging device use a 5V / 2A charger, do not use a fast charging charger exceeding 5V / 3A.Charge the earphone according to the supplied instructions.

Before use

Precautions

Before using this product, carefully read this manual and retain it for future reference. Additional warnings may be present on the product,packaging, or in the user instructions.

Safety

- Observe all warnings, precautions and instructions.
- CHOKING HAZARD ~Small parts. Not for children under 6 years.

This device complies with part 15 of the FCC Rules. Operation is subject to the following two conditions: (1) this device may not cause harmful interference, and (2) this device must accept any interference received, including interference that may cause undesired operation.

Any changes or modifications not expressly approved by the party responsible for compliance could void the user's authority to operate the equipment.

NOTE: This equipment has been tested and found to comply with the limits for a Class B digital device, pursuant to Part 15 of the FCC Rules. These limits are designed to provide reasonable protection against harmful interference in a residential installation. This equipment generates, uses and can radiate radio frequency energy and, if not installed and used in accordance with the instructions, may cause harmful interference to radio communications. However, there is no guarantee that interference will not occur in a particular installation.

If this equipment does cause harmful interference to radio or television reception, which can be determined by turning the equipment off and on, the user is encouraged to try to correct the interference by one or more of the following measures:

- Reorient or relocate the receiving antenna.
- Increase the separation between the equipment and receiver.
- Connect the equipment into an outlet on a circuit different from that to which the receiver is connected.
- Consult the dealer or an experienced radio/TV technician for help.

The device has been evaluated to meet general RF exposure requirement. The device can be used in portable exposure condition without restriction