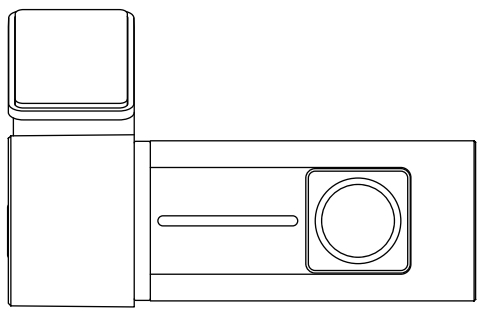


材质	封面128g铜版纸过哑油 内页90g铜版纸过哑油	尺寸	90*120mm	装订方式	骑马钉
----	--------------------------	----	----------	------	-----

Dash cam  
V100



USER MANUAL

Please read this user manual carefully before using it and keep it well for future reference. V108

Contents

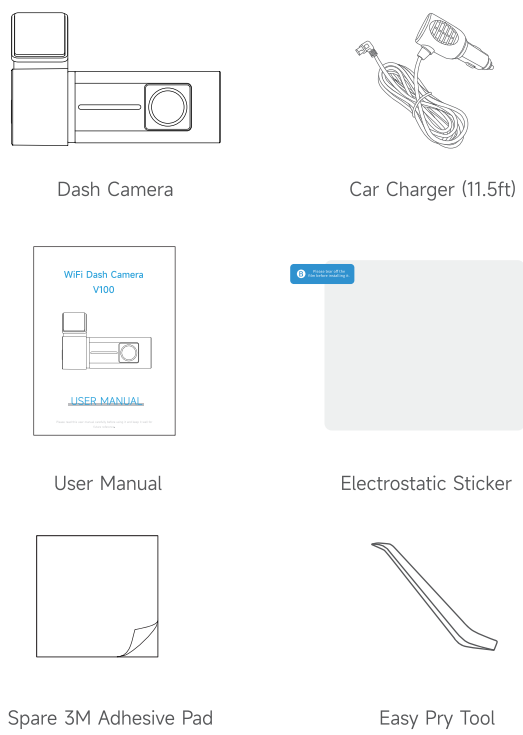
- 01 NOTICE
- 02 WHAT'S IN THE BOX
- 03 KNOW YOUR DASH CAMERA
- 04 INSTALLATION INSTRUCTIONS
- 06 OPERATION GUIDE VIA THE APP
- 15 SPECIFICATIONS
- 15 WARRANTY AND CUSTOMER SERVICE
- 16 TROUBLESHOOTING GUIDE

NOTICE

1. This unit should be connected to the car charger so that it would be constantly powered. No built-in lithium battery, will shut down when power is unplugged, does not support charging.
2. Please use the original car charger provided.
3. This unit is intended to be mounted on the front windshield. It must not be placed in a position where it may affect the deployment of airbags, and must not obstruct the driver's view.
4. Make sure the lens of the camera is clean and not blocked.
5. We recommend that you perform a pre-installation test to ensure that this product is in good condition.
6. This product must be securely mounted prior to driving the vehicle.
7. DO NOT leave the product where the temperature may exceed 70° C (160° F) for an extended period.
8. Free original 32G SD card has been pre-installed into the V100 dash cam.(Max. support 256G) The formatting operation has been carried out, and it can be used directly after being connected to the power supply for the first time. If you need to replace the SD card, we recommend using a well-known brand (such as Samsung) of class 10, U3 card speed micro sd card. Please remember to format the new SD card before your first use.

01

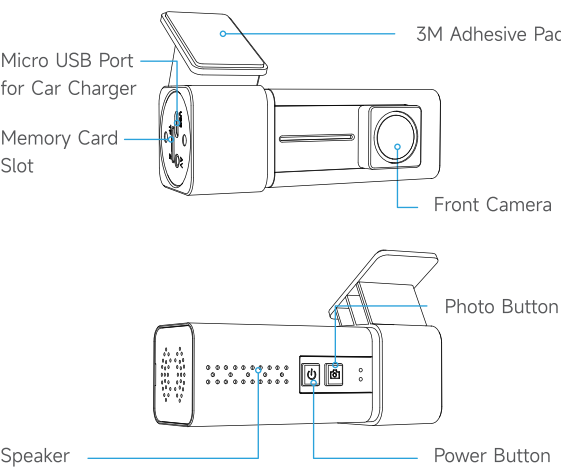
WHAT'S IN THE BOX



02

KNOW YOUR DASH CAMERA

Dash Camera



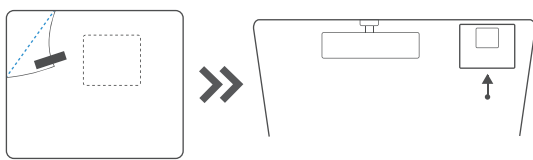
**Note:**  
Function of the Power Button  
① If you insert an unformatted card, the camera will prompt you of formatting it. You can press this button once to format it.

03

- ② Press and hold the power button for 4 seconds until you hear a beep from the camera to power off the dash camera.
- ③ Press and hold the power button for 8 seconds until you hear another 2 beeps from the camera to restore the camera to factory settings.
- ④ Under video recording status, short press is to lock the video.

INSTALLATION INSTRUCTIONS

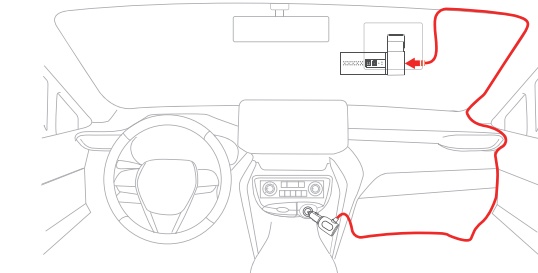
**Step 1** Stop the engine of your vehicle, find an ideal location on the front windshield, then clean the front windshield and attach the **Electrostatic Sticker** to it.



**Step 2** Peel off the **3M Adhesive Pad** on the camera and attach it onto the **Electrostatic Sticker**.

04

**Step 3** Connect the Micro USB connector of the **Car Charger** to the **Micro USB Port** on the camera, and connect another end to the **Cigarette Lighter Receptacle** in the vehicle.



05

**Step 4** Start the engine of your vehicle to check whether the dash camera is installed correctly and works well.

**Step 5** 32G SD card has been pre-installed into the V100 dash cam. If you need to replace the SD card, please remember to format the new SD card before your first use.

**Tips:**  
1. If you insert an unformatted card, the camera will prompt you of formatting it. Please press the Power Button once to format it. There are also another two options to format the card.  
Option 1: After connecting the your mobile device to the camera, install the memory card into the dash camera and go to the App > Camera Settings > Format to format the card.  
Option 2: Install the memory card into a card reader, then connect it to the computer to format it to FAT32.  
2. Due to the data rate of the video being recorded, a reputable Class 10 or a higher speed memory card must be used.  
3. When the card you inserted can't be read or has issue, the camera will prompt you of formatting. If the formatting fails, please replace the old card with a new one.

OPERATION GUIDE VIA THE APP

1. Connect the Dash Camera with the App

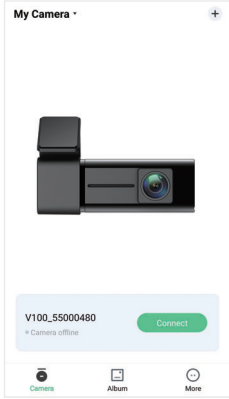
**Step 1** Scan the QR code below or go to Google Play/App Store to search for "VeeCar" to download and install the App on your mobile device.

06



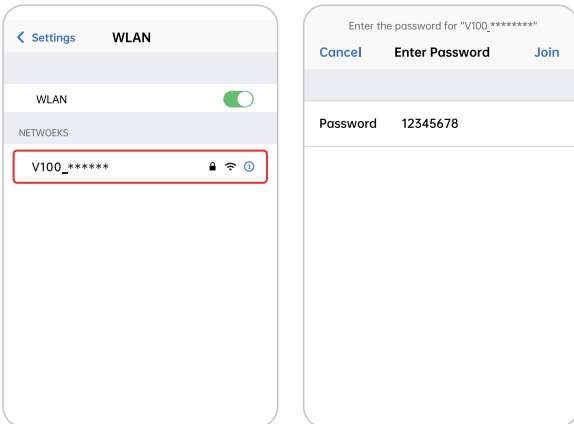
**Step 2** Make sure the dash camera is powered on and the distance between your mobile device and the camera is within 5 meters.

**Step 3** (Launch the "VeeCar" App and grant the permissions required by the App (Option to skip the login or registration process first), then tap Add Camera to check the wizard and start connecting. )



07

**Step 4** Go to the Settings > WLAN of your mobile device to search for WiFi of "V100\_\*\*\*\*\*" and enter the password 12345678 to connect to the camera's hotspot.



**Tips:**  
After connecting to the camera's WiFi, if your mobile device pops up a window asking "The camera's WiFi can't access the Internet, are you sure to continue the connection?", please select "Yes". Selecting "No" will disconnect the camera's WiFi.

08

**Step 5** Go back to the App to wait for the connection, then tap Access Camera to enter the homepage.

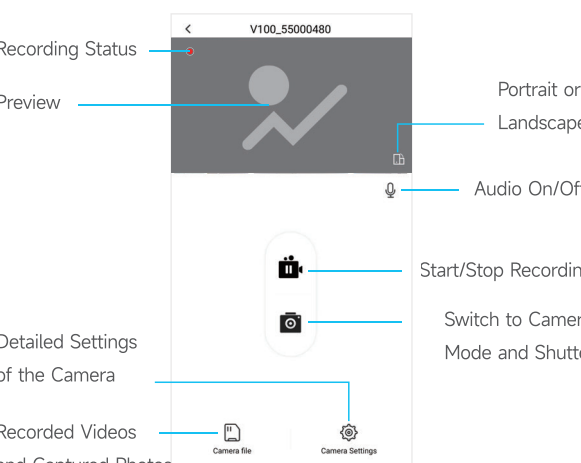


**Tips:**  
When you disconnect the camera's wifi and exit the APP, the camera will continue to record, and you will hear a voice prompting" wifi disconnected".

09

2. Overview of the App

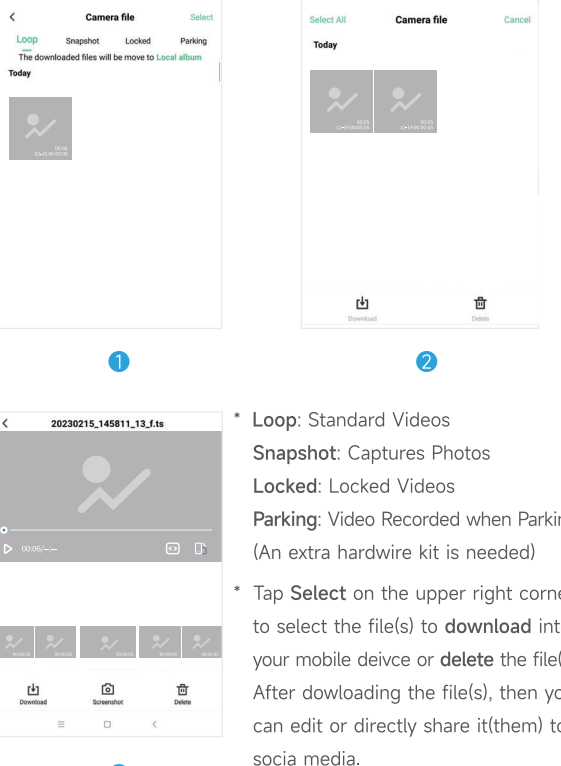
Homepage



Camera File

Tap **Camera File** on the homepage to check all the videos and photos. You can also delete or download files here.

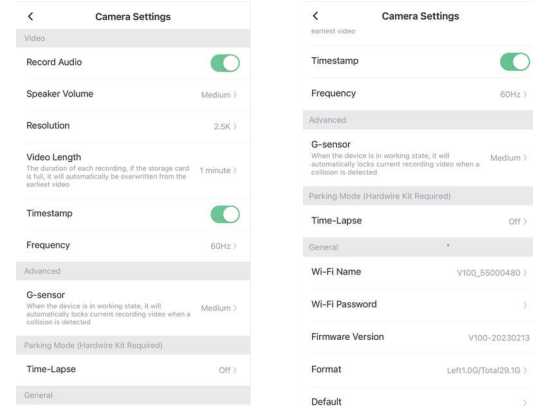
10



11

Settings

Tap **Camera Settings** on the homepage to check and change the settings of your dash camera.



**Record Audio**  
Turn on or turn off the audio when recording videos.

**Speaker Volume**  
Set the volume of the speaker for the camera. You can choose from **Mute, Low, Medium, and High**.

12

Resolution

Change the resolution of the dash camera. Options include **2.5K@30fps**, and **1080P@30fps**.

Video Length

Change the recording time of each video. The recording time is set to be 1 minute by default. You can choose from **1 minute, 2 minutes, and 3 minutes**.

Time Stamp

Show or hide the date and time watermark on the recorded videos and captured photos.

Frequency

Tap to switch the frequency between 60Hz and 50 Hz .

G - Sensor

Set the different G-sensor sensitivity of collision detection when driving. You can select from **Low, Medium, High, and Off** as needed. If you select High(low), the camera would automatically lock the current video when your car encounters a minor(severe) collision. If the G-sensor is triggered to lock the video, the machine will make a voice announcement of "The video is locked". Indicating the camera is locking the current video. This video will not be overwritten.

13

Time-lapse

Set the frame rate of the video. After enabling this option, every 30 minutes of videos will be compressed to 1 minute and then be saved in the memory card.

**Note:**  
An extra hardware kit(not included) is required for using this function. Please contact us for more information.

Wi-Fi Name

Check and change the camera's WiFi name.

Wi-Fi Password

Check and change the camera's WiFi password.

Firmware Version

Check the firmware version of the dash camera.

Format

Format the memory card.

Default

Restore the dash camera to the factory settings. When resetting, the dash camera will be restarted.

14

SPECIFICATIONS

Chipset	SA220C
Sensor	SC2336
Speaker	1W
Memory Card	Support up to 256GB (32G sd card included)
Connection	Micro usb Port and Memory Card Slot
Resolution(Front Camera)	2560*1440P
Video Format	.TS
Photo Format	JPG
Storage Temperature	-30°C~ +75°C
Working Temperature	-10°C~ +65°C

WARRANTY AND CUSTOMER SERVICE

- We provide a 12-month warranty for product quality issues and 45 days money back & return guarantee for all products.
- If you have any questions or need any help, please feel free to contact us in time. We offer 7\*24H high-priority customer service response via **Amazon Message**.

15

TROUBLESHOOTING GUIDE

**Q1. The dash camera can't be used normally after the new sd card is inserted, and it prompts that the card needs to be formatted.**

To ensure normal video recording with the dash camera, it needs to format the memory card first and check its speed before using it. Option 1: Press the power button as soon as you hear the voice prompt for formatting the memory card.  
Option 2: Go to the App > Settings > Format to format the memory card.

**Q2. Too loud, too low, or repeated voice prompts.**

Go to the App > Settings > Speaker Volume to mute the speaker or adjust the volume as needed.

**Q3. My mobile device can't connect to the dash camera's WiFi.**

Go to the WLAN settings of your mobile device and find the WiFi of V100\_\*\*\*\*\*. Then, input the right password 12345678. After a successful connection, the WiFi icon on the display will turn green. Upon the success of the first connection, the mobile phone will automatically connect for future use.

**Q4. There is no sound when playing the recorded videos.**

If the microphone icon on the display has been disabled, the video has been recorded without sound. To turn on the microphone, please go to the App > Settings > Record Audio.

16

If the microphone icon on the display is normal, please go to App > Settings > Default and restore the dash camera to factory settings. (It's normal for preview video to be without audio.)

**Note:**  
In case the problem persists after resetting, please contact us directly.

**Q5. The machine sometimes sends out a voice reminder of "The video is locked", is it normal?**

The voice reminder indicates that the current video is being locked and recorded. It is a normal situation that the G-sensor function is triggered due to sudden braking, collision or bad road conditions during the driving process. You can go to App > Settings > G-sensor to adjust the sensitivity level or disable this function.

**Q6. Why can't I see the live preview on the App?**

1. Make sure your mobile device has connected to the WiFi of the dash camera.
2. The distance between your mobile device and the dash camera can't exceed 5 meters.

**Q7. Why can't my mobile device receive messages via 4G/5G cellular data after it connects to the WiFi of the dash camera?**

If your dash camera is a single-channel phone, it will not be able to receive 4G/5G information after connecting to the camera's WiFi. However, it will be able to receive calls.

17

**Q8. How to mute the sound of the dash camera?**

After connecting to the camera's WiFi, please go to App > Settings > Speaker Volume to mute the speaker.

**Q9. Can I use the dash camera without a power source?**

No, you can't. Since this camera has no battery built-in, it needs to be powered while working.

**Q10. Can I use the dash camera without my phone?**

Yes, you can. Once you set up the dash camera with the App for the first time, as soon as the dash camera is connected to the power supply in the future, it will begin working.

**Q11. How can I activate the Parking Mode function of the dash camera?**

A hardware kit is required to use this function. After the Hardware Kit installation and wiring are completed correctly, the machine has activated the "Time-lapse" function by default, and the dash camera can guarantee 24H continuous time-lapse recording to ensure the safety of your car.

**Q12. When I cannot connect to the camera's WiFi, my mobile phone can't recognize the WiFi, the camera's WiFi is not listed, I can't format the card, and I can't find the unconnected device, what should I do?**

Please press and hold the power button for 10s until you hear two beeps to restore the dash camera to the factory settings. After resetting, please reconnect your mobile device to the camera's WiFi. If the issue still exists, please directly contact us.

18

CAUTION

RISK OF EXPLOSION IF BATTERY IS REPLACED BY AN INCORRECT TYPE. DISPOSE OF USED BATTERIES ACCORDING TO THE INSTRUCTIONS

The symbol indicates DC voltage



This product bears the selective sorting symbol for Waste electrical and electronic equipment (WEEE). This means that this product must be handled pursuant to European directive 2012/19/EU in order to be recycled or dismantled to minimize its impact on the environment.

FCC Caution:

Any Changes or modifications not expressly approved by the party responsible for compliance could void the user's authority to operate the equipment. This device complies with part 15 of the FCC Rules. Operation is subject to the following two conditions: (1) This device may not cause harmful interference, and (2) this device must accept any interference received, including interference that may cause undesired operation.

IMPORTANT NOTE:

**Note:**  
This equipment has been tested and found to comply with the limits for a Class B digital device, pursuant to part 15 of the FCC Rules.

19

These limits are designed to provide reasonable protection against harmful interference in a residential installation. This equipment generates, uses and can radiate radio frequency energy and, if not installed and used in accordance with the instructions, may cause harmful interference to radio communications. However, there is no guarantee that interference will not occur in a particular installation. If this equipment does cause harmful interference to radio or television reception, which can be determined by turning the equipment off and on, the user is encouraged to try to correct the interference by one or more of the following measures:  
—Reorient or relocate the receiving antenna.  
—Increase the separation between the equipment and receiver.  
—Connect the equipment into an outlet on a circuit different from that to which the receiver is connected.  
—Consult the dealer or an experienced radio/TV technician for help.  
FCC Radiation Exposure Statement:  
This equipment complies with FCC radiation exposure limits set forth for an uncontrolled environment. This equipment should be installed and operated with minimum distance 20cm between the radiator & your body.

20

## ISED Statement

- English: This device complies with Industry Canada license-exempt RSS standard(s). Operation is subject to the following two conditions: (1) This device may not cause interference, and (2) This device must accept any interference, including interference that may cause undesired operation of the device.

The digital apparatus complies with Canadian CAN ICES-3 (B)/NMB-3(B).

- French: Le présent appareil est conforme aux CNR d'Industrie Canada applicables aux appareils radio exempts de licence. L'exploitation est autorisée aux deux conditions suivantes: (1) l'appareil ne doit pas produire de brouillage, et (2) l'utilisateur de l'appareil doit accepter tout brouillage radioélectrique subi, même si le brouillage est susceptible d'en compromettre le fonctionnement. L'appareil numérique du CIEM conforme canadien peut - 3 (b) / nmb - 3 (b).

This device meets the exemption from the routine evaluation limits in section 2.5 of RSS 102 and compliance with RSS 102 RF exposure, users can obtain Canadian information on RF exposure and compliance.

cet appareil est conforme à l'exemption des limites d'évaluation courante dans la section 2.5 du cnr - 102 et conformité avec rss 102 de l'exposition aux rf, les utilisateurs peuvent obtenir des données canadiennes sur l'exposition aux champs rf et la conformité.

This equipment complies with Canada radiation exposure limits set forth for an uncontrolled environment.

This equipment should be installed and operated with minimum distance 0cm between the radiator & your body.

Cet équipement est conforme Canada limites d'exposition aux radiations dans un environnement non contrôlé.

Cet équipement doit être installé et utilisé avec une distance minimale de 20 cm entre le radiateur et votre corps.