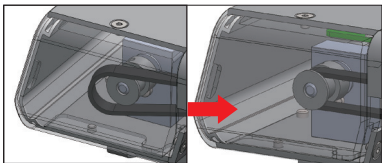
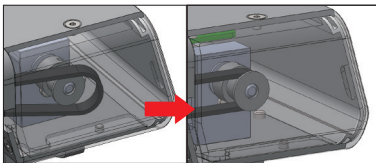




It is strictly forbidden to drag the X and Y axes quickly !!!



L The timing belt covers the timing wheel.



The timing belt covers the timing wheel. R

ORTUR

Product Name: Laser Engraver

Model No.: OLM3

Power Input: 24VDC = 4A

Wavelength: 445±5nm. Class 4 Laser Product

- LU2-2 Max Luminous Power: 1600mW
 - LU2-2A Max Luminous Power: 2100mW
 - LU2-4-LF Max Luminous Power: 5500mW
 - LU2-4-SF Max Luminous Power: 5500mW
 - LU2-10A Max Luminous Power: 10000mW
 - LU3-20A Max Luminous Power: 20000mW
- Complies with IEC 60825-1:2014

EC I REP ADDR.: Ortur Tech Europe Praça Salvador Alves
Pereira, Loja 2, 4970-442 ARcos de Valdevez, Portugal

USA I REP ADDR.: Ortur America 2403 Magnolia Dr
Springdale, AR 72762

FCC ID: 2A7JT-ORTUR

IC: 29806-ORTUR

FC CE RoHS   **MADE IN CHINA**

Warning: For professional use only.

Please keep minors away from the machine.

It must be placed in ventilated and fireproof environments.

Avoid eye or skin exposure to direct or scattered radiation.

Warnung: Nur für den professionellen Gebrauch.

Bitte halten Sie Minderjährige von der Maschine fern.

Es muss in belüfteten und feuerfesten Umgebungen aufgestellt werden.

Augen- oder Hautkontakt mit direkter oder gestreuter Strahlung vermeiden.

**警告: プロの使用のみ。
未成年者は機械に近づけないでください。**

**換気され、耐火性のある環境に設置する必要があります。
直接または散乱放射線への目または皮膚の曝露を避けてください。**



www.orturtech.com



**UK
CA**

RoHS

Made In China

This device complies with Part 15 of the FCC Rules.

Operation is subject to the following two conditions: (1) this device may not cause harmful interference, and (2) this device must accept any interference received, including interference that may cause undesired operation.

FCC ID: 2A7JT-ORTUR
IC : 29806-ORTUR

**DANGER-CLASS 4 LASER RADIATION WHEN OPEN
AVOID EYE OR SKIN EXPOSURE TO
DIRECT OR SCATTERED RADIATION**

**LASER ENERGY-EXPOSURE NEAR
APERTURE MAY CAUSE BURNS**



Label Location

