

SMD CERAMIC ANTENNA

Data Sheet

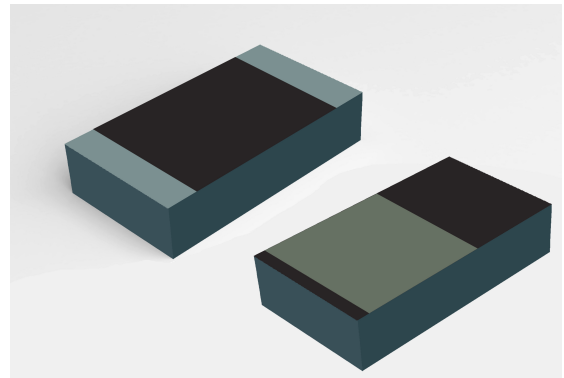
CS-2450-31

For 2400-2484MHz

3.2x1.6mm [EIA1206]

特征 Feature

- 重量轻, 结构紧凑
Light weight, compact
- 宽带大, 低成本
Wide bandwidth, low cost
- 高增益内置天线
Built-in antenna with high gain

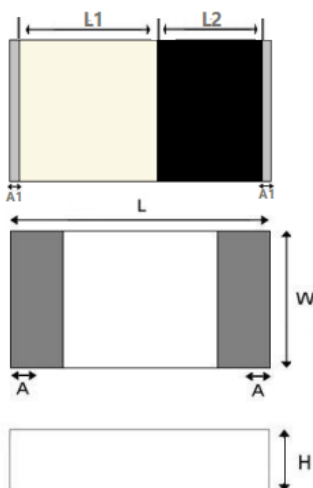


应用 Application

- 蓝牙技术Bluetooth
2.4GHz频段 IEEE802.11g/b
- 齐格比系统
Zigbee systems
- 其它etc...

形状和尺寸(单位: mm)

Shapes And Dimensions Dimensions in mm



L1	L2	A1	
1.4±0.10	1.3±0.10	0.20±0.10	

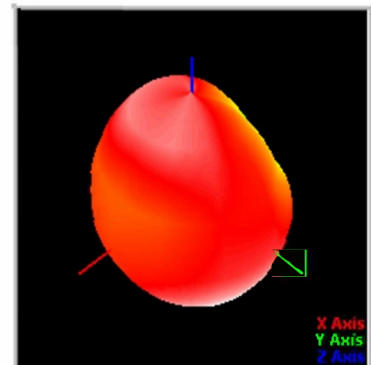
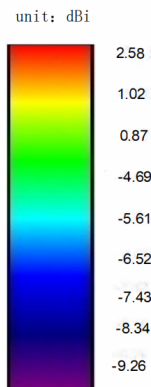
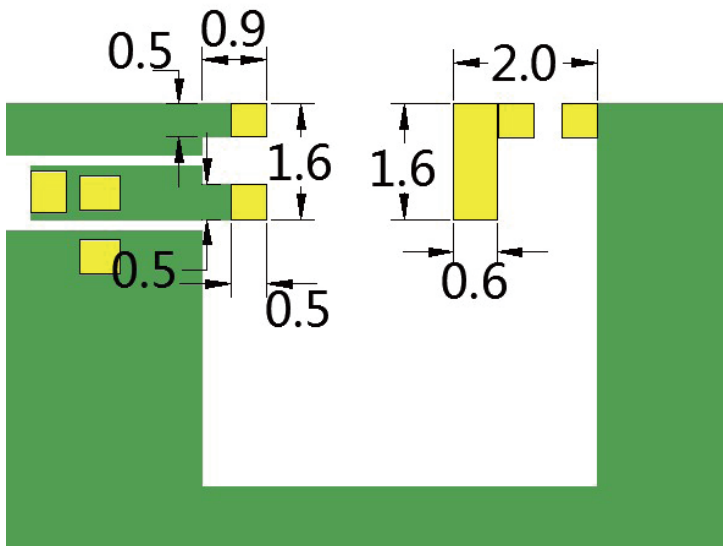
L	W	A	H
3.10±0.10	1.55±0.10	0.40±0.20	0.55±0.1

电气特性 Electrical Characteristics per line(TA= 25°C)

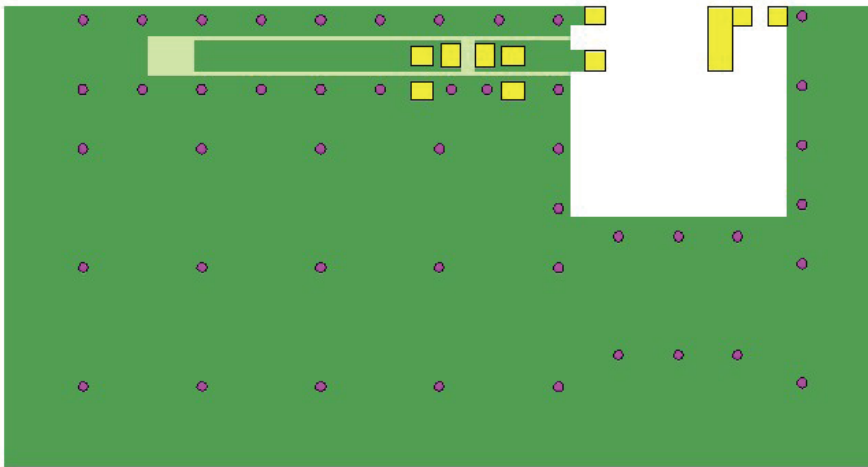
参数Parameter	规格Specification	单位Units
频带 Frequency Band	2400~2483	MHz
极化 Polarization	线极化	
*最大增益 Peak Gain	2.58	dBi
*效率 Efficiency	72.30	%
阻抗 Impedance	50	Ω

■ 编码 Part Numbering System

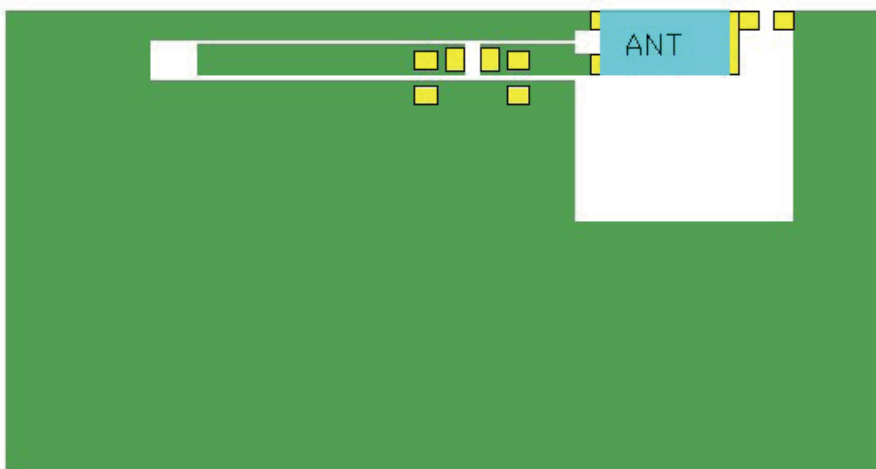
CS - 2450 - 31 - A
 Material Frequency Size Type



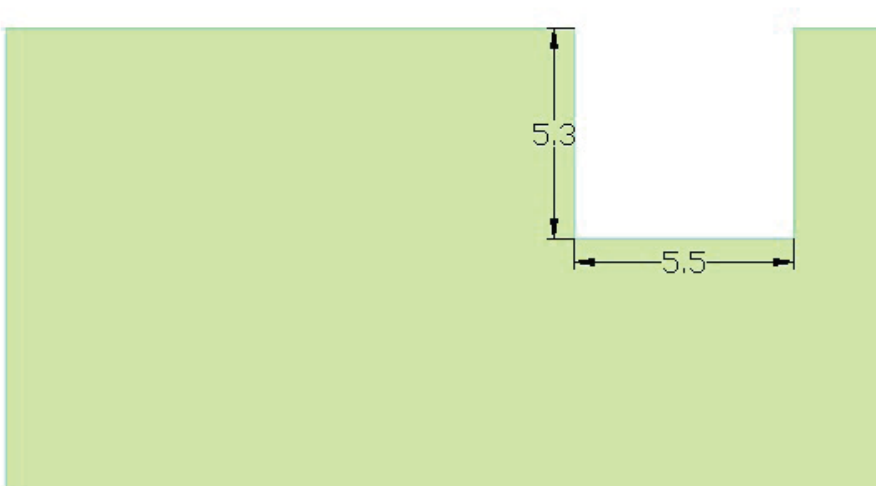
■ 评价板 Evaluation Board



- 天线
- PAD
- 底层铺铜
- 顶层铺铜
- 打孔

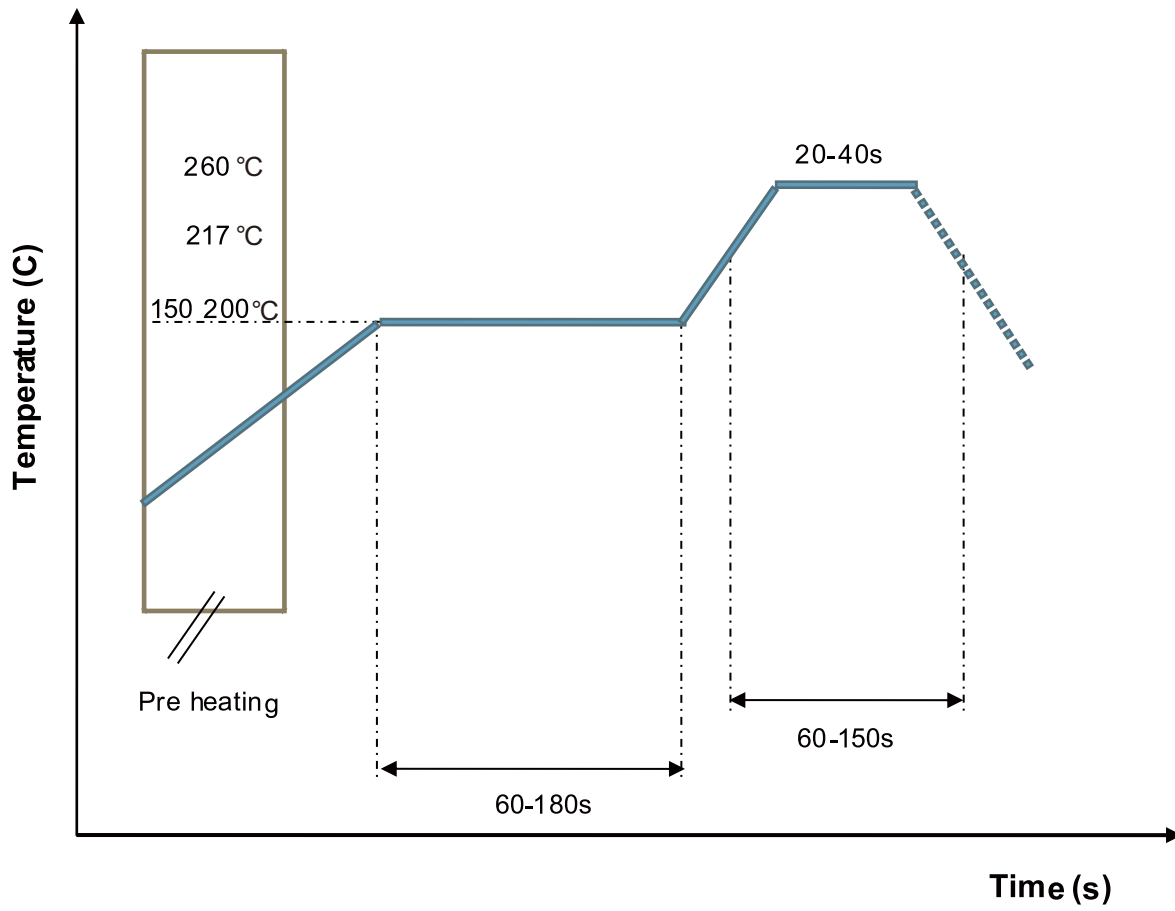


- 天线
- PAD
- 底层铺铜
- 顶层铺铜



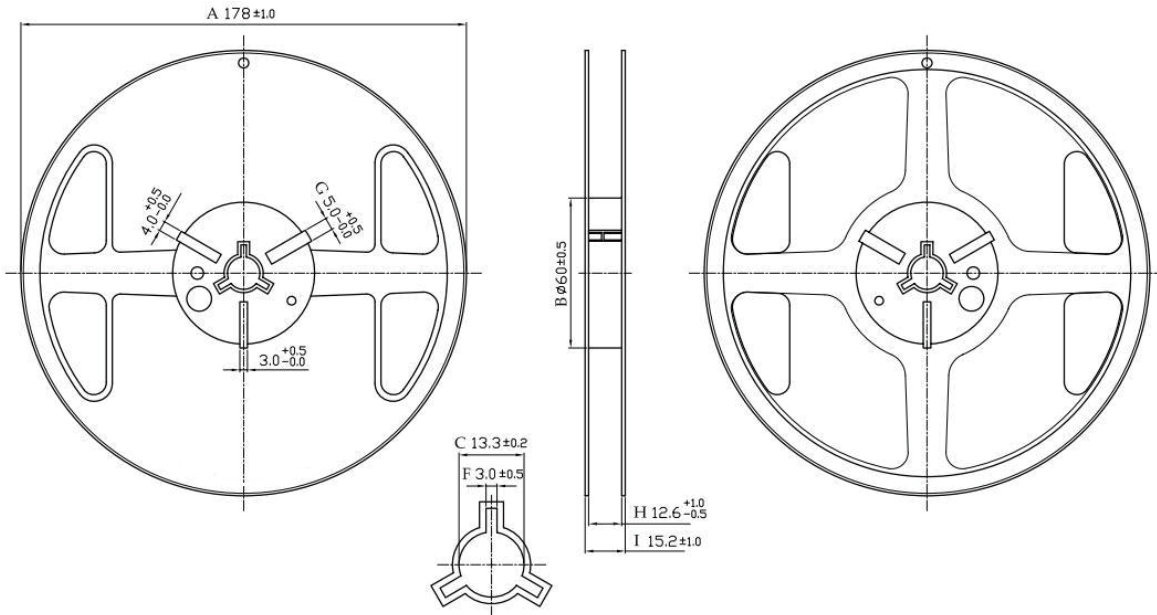
■ 推荐回流剖面

RECOMMENDED REFLOW PROFILE

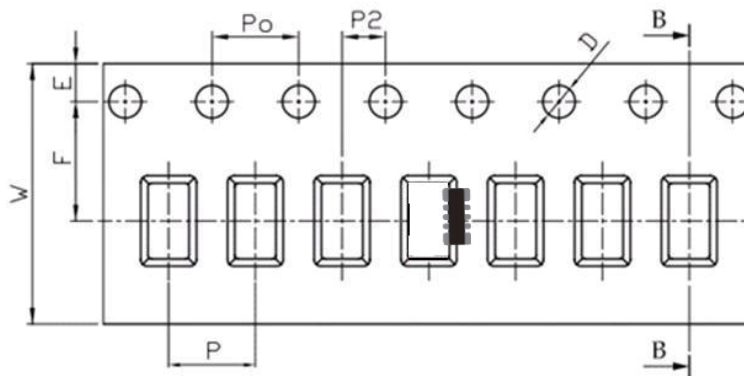


■ 包装形式 Packaging Style

□ REEL DIMENSIONS



□ 胶带尺寸 TAPE DIMENSIONS



Feature	Specifications	Tolerances
W	8.00	±0.30
P	4.00	±0.10
E	1.75	±0.10
F	3.50	±0.10
P2	2.00	±0.10
D	1.50	+0.10 -0.00
P0	4.00	±0.10
10P0	40.00	±0.20

数量Quantity:5000pieces per 7 reel