

52*75mm 105g双铜纸 光面 单黑印刷 风琴折

GUESS
EST. 1981



(EN) Earphone multi-function (MF) touch button
(FR) Bouton tactile multifonction (MF) de l'écouteur
(ES) Botón táctil de multifunción (MF) de los auriculares

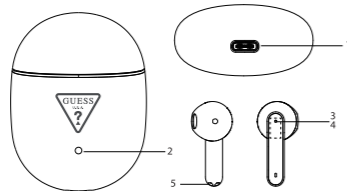
EARBUDS WIRELESS BLUETOOTH
ECOUTEURS SANS FIL BLUETOOTH
AURICULARES INALÁMBRICOS BLUETOOTH

WITH CHARGING CASE
AVEC BOÎTIER DE CHARGE
CON ESTUCHE DE CARGA

USER MANUAL

Parts instruction

Structure Sketch



1.	USB Type-C Charging Port
2.	Charging Base Indicator
3.	Charging Indicator for Earphones
4.	MFB (Multi-Function Button) Touch Control
5.	Charging Pogo Pin

Status No.	Status	Earphones Performance
1	TWS Pairing or Bluetooth Pairing	The indicator flashing red and blue alternately.
2	Call Mode	When in a call, the light went off.
3	Earphones Charging Mode	During charging, the indicator turns to always on Red, and turns off when fully charged. The Red indicator automatically goes out.
4	Play Music	The light turn off.
5	Low Battery	Red light flashes 3 times 150ms each 10s all around.

Status No.	Status	Charging Base Performance
1	Charging Status of the Charging Base	The charging case has 1 indicator light (red). When charging box is plugged in, red light flash 1 time each 1s When charging box is fully charging, red light is steady. Earphones are charged in case, light off.

PACKAGE CONTENTS

- Earphones x1 pair
- Charging Base x1
- User Manual x1
- USB Type-C Charging Cable x1

FEATURES

- True wireless (TWS) technology
- Separated two earphones can be used individually or at the same time.

HOW TO USE

Identify accordingly to L&R and wear the earphone (L) and earphone (R) respectively



Charging Ways of earphones

Put the earphones (L)(R) to the corresponding position in the bottom of charging base. The indicator lights of earphones are red when being charging, when fully charge, then turn off automatically.

Charging Ways of Charging Base

Please charge the base via USB charging cable. The indicator light follows the status flashing in red when charging, turn to always on red when fully charged.

Use the USB cable to connect with computer

- Note 1: Check the charging device is suit to the earphones or not.
- Note 2: Use only the supplied charger to charge the earphones, if use other device may violate the validation or the maintenance article of this product and may cause danger.
- Note 3: Do not attempt to force open the built-in battery as this could damage the earphones.
- Note 4: A fully charged earphones will lose its power automatically if left unused. It is recommended to charge the earphones each three months.
- Note 5: Do not leave the earphones in a too hot or too cold condition (best between 15 °C and 45 °C), which may affect the earphones' operation although it is fully charged.
- Note 6: Do not dispose of the earphones into fire or water.

Turning ON/OFF

Method 1

Touch and hold earphone(MFB) each for 2 seconds to power on, the earphones indicator alternately flash blue&red for TWS pairing.

Method 2

Turn on automatically when the earphones Pick Up.
Put them back to the charging case to power off.

TWS Pairing

HOW TO PAIR

Pick up the earphones, two earphones will enter auto-pairing mode and connect with each other after few seconds, main earphone indicator alternately flash red & blue, the other flash blue once each 5s. Then open the phone's wireless function to search.

Cell phone begins to search for wireless devices (see the user guide of your phone for instructions), and select "GUESS TWS" from wireless device list.

TWS Reconnected

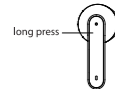
When the earphones and the mobile phone have been paired, don't need to reconnect, the earphones will automatically connect with last mobile phone (firstly ensure the mobile phone's related wireless function have been opened, and the distance between your earphones and phone is within effective distance).

Answer/End a Call



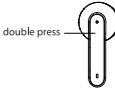
When call incoming, double press MFB of earphone (R) or earphone (L) to answer the call. In call mode, double press MFB of earphone (R) or earphone (L) to end the call.

Reject Call



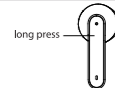
When Call in Coming, long press MFB 2s of earphone (R) or earphone (L) to reject the call.

Music Pause/Playing



• In standby mode, double press MFB of earphone (R) or earphone (L) to play music.
• On music playing state, double press MFB of earphone (R) or earphone (L) to pause music.

Pre/Next Song



During playing, long press MFB 2s on left earphone to previous song, long press MFB 2s on right earphone to next song.

Voice Assistant

When standby, press the MFB 3 times to activate voice assistant.

Delete Pairing Records on the earphones

Long press MFB 7s at least of earphone (R) and earphone (L) at the same time to delete bluetooth pairing records.

Maintenance

- Do not use abrasive cleaning solvents to clean the earphones.
- Do not allow the earphones to touch with any sharp objects as this will cause scratching and damage.
- Please keep earphones away from high-temperature, humidity and dust.

TROUBLE SHOOTING

Trouble	Reasons	Solutions
Cannot turn on	Low battery protection	Charging earphones for 2 hours
Cannot turn on by picking up the earphones / No indicator light when earphones being charged	Charging base Low battery protection	Charging both the earphones and Charging Base for 2 hours
No sounds after pairing	Wrong pairing	Pairing again and increasing the volume of connected devices.

Trouble	Reasons	Solutions
The two earphones TWS pairing failure/TWS paired successful but Cannot find the earphones	Too many pairing records	Delete pairing records
Charging base without indicator light when charging	DC power supply doesn't output power	Check whether the USB-C charging cable is plugged well or not
Earphones without indicator light when charging	The earphones couldn't being charged in charging base	1) Checking earphones charging interface whether has touched to POGO PIN of charging base and the location is correct or not. 2) Charging for charging base
automatically	Low battery	Charging earphones for 1-2 hours
Earphones echo	Volume is Too loud or environment is noisy	Adjust the volume at phone or change a place
Noise in call	Environmental interference caused or distance between earphones and mobile is too far	Change a place or move the earphones close to the mobile phone
Low voice of the calling party	Wearing earphones are wrong	Adjusting wearing position of earphones





Safety Instructions

The exclamation point within an equilateral triangle is intended to alert the user to the presence of important operating and maintenance (servicing) instructions in the literature accompanying the appliance.

Read this manual carefully

Heed all warnings on the product and in the instruction manual. For your safety, read and follow this manual carefully to ensure proper use of the product and avoid any danger or physical damage.

Pictograms Used

Symbols	Explanation
	DC Voltage
	To prevent possible hearing damage, do not listen at high volume levels for long periods
	RECYCLING This product bears the selective sorting symbol for Waste electrical and electronic equipment (WEEE). This means that this product must be handled pursuant to European directive 2012/19/EU in order to be recycled or dismantled to minimize its impact on the environment. User has the choice to give his product to a competent recycling organization or to the retailer when he buys a new electrical or electronic equipment.
	Product complies with the European Safety Regulations

Technical Specifications

Wireless Version:	V5.2
Audio Decoding Protocol:	SBC
Operation Range:	Up to 10 meters
Frequency Range:	20Hz-20kHz
Battery of Earphones:	35mAh Li-ion Battery
Battery of Base:	270mAh Li-ion Battery
Charging Voltage:	5V
Charging Time (Base and Earbuds):	< 1 hour and 45mins
Play Time:	4 hours
Driver Size:	φ 13mm
Driver Impedance:	16Ω±15%
Battery Type:	Li-ion Battery
Operating Frequency:	2402MHz ~ 2480MHz
Maximum Translation Power:	< 4dBm
Net Weight:	42g



FCC ID :2A7J2-GUTWST82

Safety Precaution

1. Do not expose earphones to extreme temperatures.
2. Do not attempt to modify this product. Doing so will void the warranty and could result in personal injury and/or product failure.
3. Do not immerse in water, such as while taking a bath or washing your face, otherwise sound deterioration or failures may result.
4. Wipe the earphones and sleeves with mild antiseptic to avoid infections. Do not use alcohol-based disinfectants.
5. The cable connectors to the earphones may collect debris or other deposit that can affect audio quality. If this is happens, disconnect the cables and clean them using a dry cotton swab.
6. Set the volume level of the audio device to minimum, and then after connecting the earphones, adjust the volume gradually. Sudden exposure to loud noises could cause hearing damage.
7. Stop using the earphones immediately if they are causing great discomfort, irritation, rash, discharge, or any other uncomfortable reaction.
8. Do not use when a failure to hear your surroundings could be dangerous, such as while driving, or when biking, walking, or jogging where traffic is present and accidents could occur.



CAUTION:

- Risk of explosion if battery is replaced by an incorrect type.
- Replacement of charging case or earphones with incorrect type that can defeat a safeguard.
- Replacement of a battery with an incorrect type that can defeat a safeguard.
- Disposal of a battery into fire or a hot oven, or mechanically crushing or cutting of a battery, that can result in an explosion.
- Leaving a battery in an extremely high temperature surrounding environment that can result in an explosion or the leakage of flammable liquid or gas.
- A battery subjected to extremely low air pressure that may result in an explosion or the leakage of amammable liquid or gas.

Warning

- The marking information is located at the back of apparatus.
- No naked flame sources, such as lighted candles, should be placed on the apparatus.

ATTENTION

- Should be drawn to the environmental aspects of battery disposal the use of apparatus in moderate climates.

CAUTION

- Danger of explosion if battery is incorrectly replaced. Replace only with the same or equivalent type.
- The batteries (battery pack or batteries installed) shall not be exposed to excessive heat such as sunshine, fire and so on. The symbol indicates DC voltage.
- Replacement of charging case or earphones with incorrect type that can defeat a safeguard.
- Disposal of a battery into re or a hot oven, or mechanically crushing or cutting of a battery, that can result in an explosion.
- Leaving a battery in an extremely high temperature surrounding environment that can result in an explosion or the leakage of flammable liquid or gas.
- A battery subjected to extremely low air pressure that may result in an explosion or the leakage of flammable liquid or gas.

Product Description

TWS Wireless Earphones

Wireless earphones should be used with the compatible devices which support wireless technology. This allows you to make calls and enjoy the music streaming at any time freely.

Please read this user manual carefully before using the earphones, and also read your device's user manual regarding the same function, and pay attention to those important safety and maintenance information. Please keep the earphones away from children.

GUESS
EST. 1981

FCC Statement

This device complies with part 15 of the FCC Rules. Operation is subject to the following two conditions: (1) This device may not cause harmful interference, and (2) this device must accept any interference received, including interference that may cause undesired operation.

This equipment has been tested and found to comply with the limits for a Class B digital device, pursuant to part 15 of the FCC Rules. These limits are designed to provide reasonable protection against harmful interference in a residential installation. This equipment generates, uses and can radiate radio frequency energy and, if not installed and used in accordance with the instructions, may cause harmful interference to radio communications. However, there is no guarantee that interference will not occur in a particular installation. If this equipment does cause harmful interference to radio or television reception, which can be determined by turning the equipment off and on, the user is encouraged to try to correct the interference by one or more of the following measures:

- Reorient or relocate the receiving antenna.
- Increase the separation between the equipment and receiver.
- Connect the equipment into an outlet on a circuit different from that to which the receiver is connected.
- Consult the dealer or an experienced radio/TV technician for help.

Caution: Any changes or modifications to this device not explicitly approved by manufacturer could void your authority to operate this equipment.

RF Exposure Information

The device has been evaluated to meet general RF exposure requirement. The device can be used in portable exposure condition without restriction.