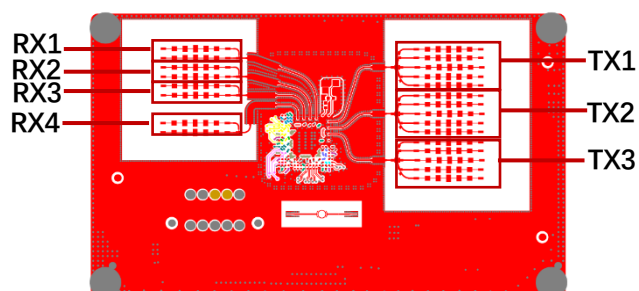


1. 天线特性 Antenna characteristics

1.1 雷达天线布局 Radar antennas layout



1.2 天线仿真结果 Antenna simulation(77~79GHz)

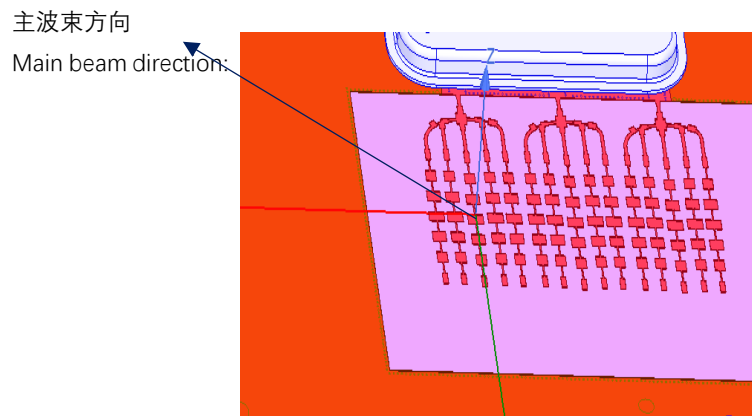
天线 Antenna	仿真增益(dBi) Simulation gain	尺寸 Dimension
TX1	11.5	9.0201mm*19.5334mm
TX2	11.38	9.0201mm*19.5334mm
TX3	11.9	9.0201mm*19.5334mm
RX1	12.96	3.46mm*17.404mm
RX2	12.16	3.46mm*17.404mm
RX3	12.35	3.46mm*17.404mm
RX4	12.05	3.46mm*17.404mm

1.3 天线方向图 Antenna pattern

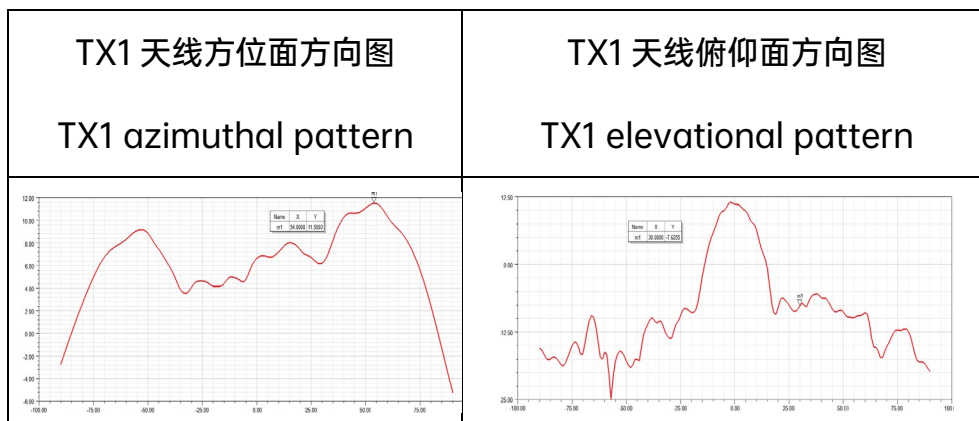
1.3.1 TX 天线 2D/3D 方向图 TX 2D/3D antenna patterns

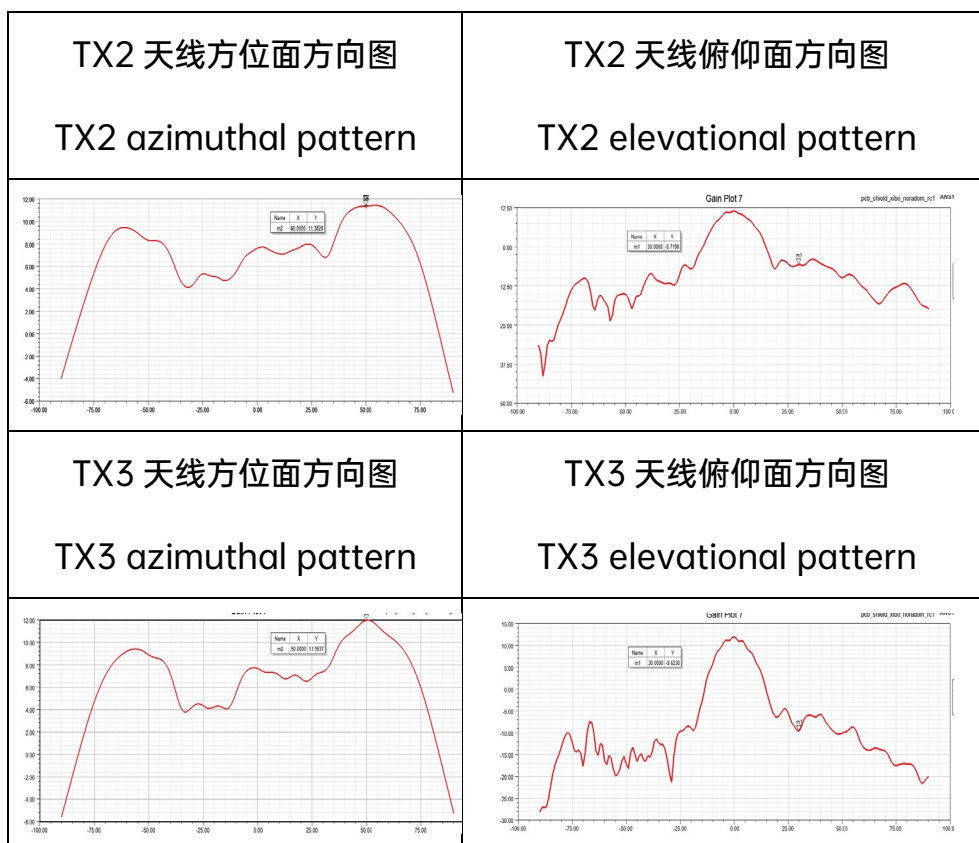
1. TX1/TX2/TX3 天线最大辐射方向与雷达 PCB 板的法线夹角为 50° 左右。The angle between TX1/TX2/TX3 beam peak direction and the normal line of the radar PCB is 50° .

参考示意图如下: Illustration is as follows:



2.

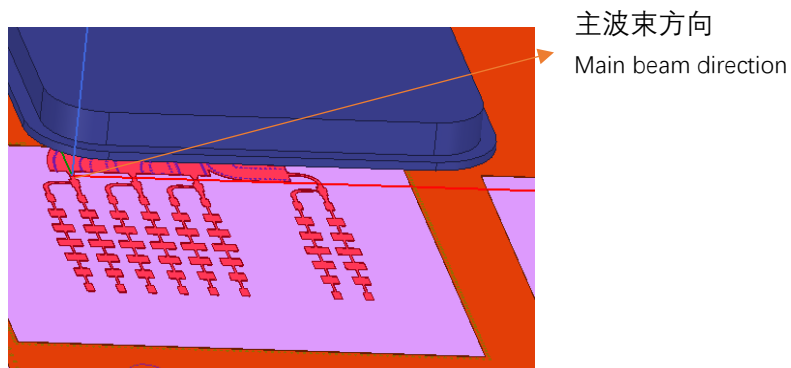




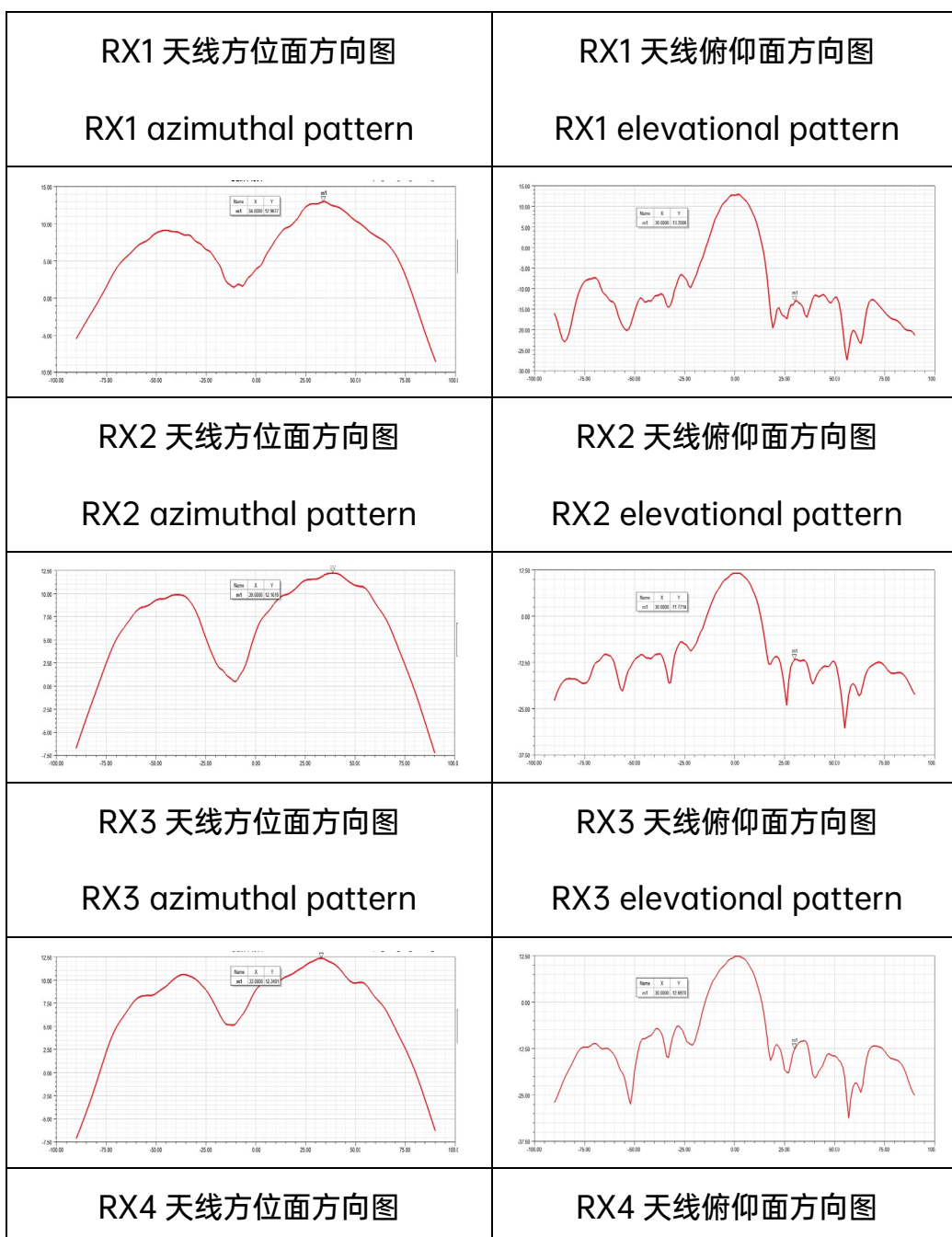
1.3.2 RX 天线 2D/3D 方向图 RX 2D/3D patterns

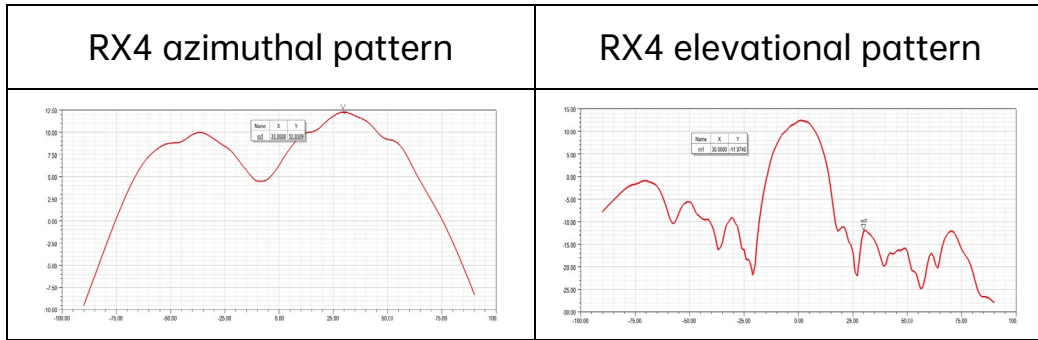
1. RX1/RX2/RX3/RX4 天线最大辐射方向与雷达 PCB 板的法线夹角为 30° 左右。The angle between RX1/RX2/RX3/RX4 beam peak direction and the normal line of the radar PCB is 30° .

参考示意图如下: Illustration is as follows:



2.





天线制造商：汕头超声印制板公司

Antenna manufacturer: China Circuit Technology (Shantou)
Corporation

供应商地址：广东省汕头市龙湖区万吉工业区

Address: Wanji Industrial Area, Longhu District, Shantou,
Guangdong Province, China.