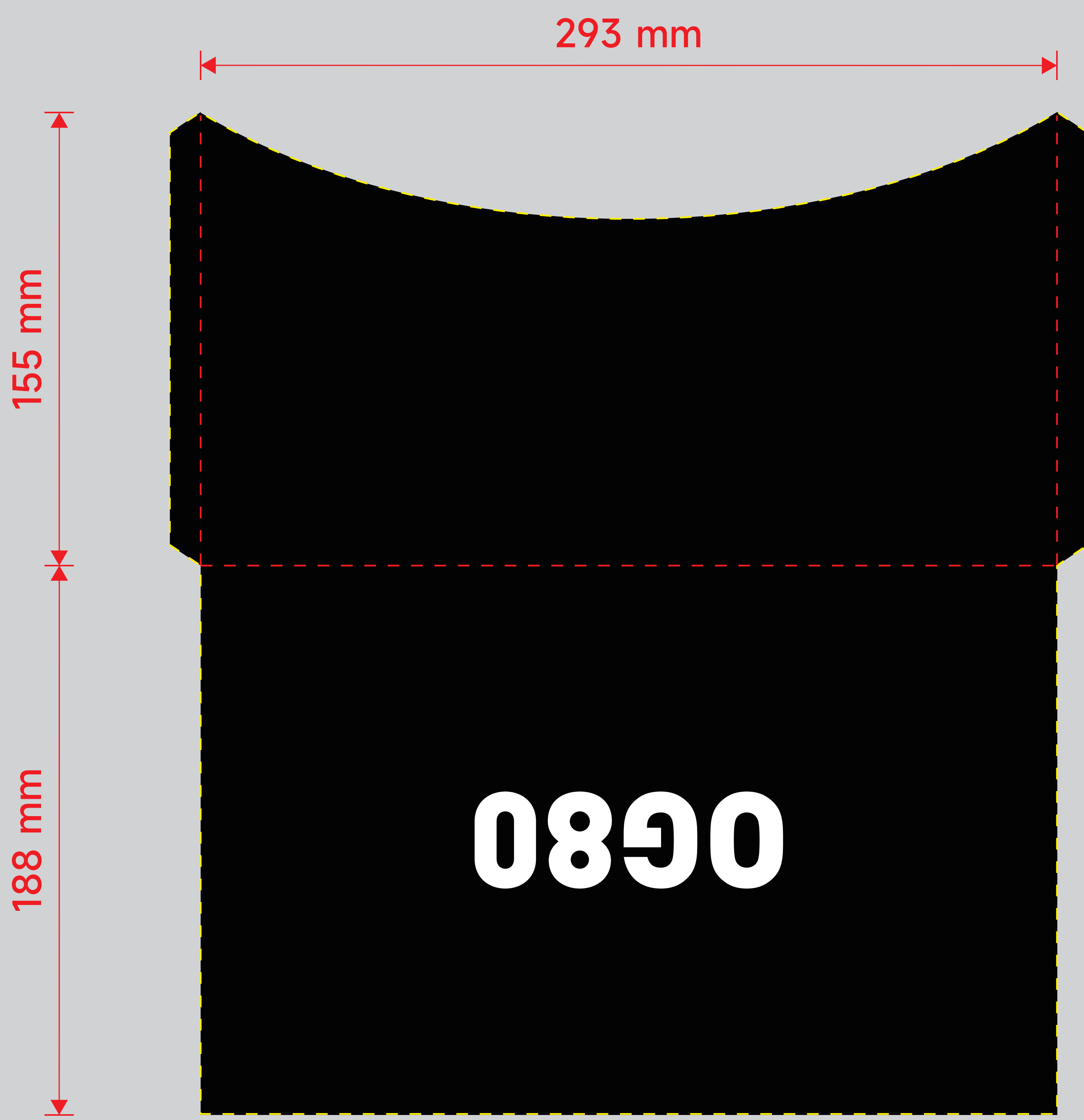


封套 (正反黑色)



说明书 (正反反面)

170 mm

100 mm

OG80 SERIES MECHANICAL KEYBOARDS

使用前请仔细阅读此说明书及注意事项，以保证您能正确的使用此产品。

开始阅读

指示灯颜色和状态说明

指示灯位置在 **ESC** 键和 **FN** 键之间

灯色	灯色说明	灯色说明	灯色说明	灯色说明	灯色说明
红色灯闪烁	蓝色灯常亮/快闪	黄色灯常亮/快闪	白色灯常亮/快闪	白色灯长亮/闪烁	白色灯长亮/闪烁
电量不足	蓝牙设备1 回表中/配对中	蓝牙设备2 回表中/配对中	蓝牙设备3 回表中/配对中	2.4G设备 回表中/配对中	触发大写/ 数字键组合键

组合键需要长按下 **FN** 再按下对应功能键

短按: 先按下FN键, 再按下对应功能键, 随后松开按键即可

长按: 先按下FN键, 再按下对应功能键, 持续5秒, 当指示灯开始闪烁后松开按键即可

选择连接方式

蓝牙模式

- 将键盘底部开关拨至“无线模式”
- 短按 **FN** + **ESC** 指示灯开始快速闪烁, 再长按 **FN** + **ESC** 此时指示灯开始快速闪烁;
- 在设备的蓝牙搜索列表中选择【IQUNIX OG80 BT 1】连接即可, 灯光熄灭即配对成功 (连接第2、3台设备, 只需将步骤②组合键中的 **ESC** 改为 **FN** 或 **FN** 即可)

2.4G模式

- 将键盘底部开关拨至“有线模式”
- 短按 **FN** + **ESC** 指示灯熄灭后 即连接成功。

*接收器置于键盘左上角最高处

有线模式

- 将键盘底部开关拨至“有线模式”
- 使用数据线将键盘与设备连接即可使用。

*当键盘通过数据线连接与电脑连接后, 键盘会自动从开始充电。 *注意: 请勿使用额定输入超过5V-1A的充电器设备对键盘进行充电!

其它组合键

长按切换MAC/Windows系统键位布局

播放/暂停 上一首 下一首

长按FN+ESC 防止误触 亮度调节 亮度设置 亮度速度+ 亮度速度- 亮度速度+ 亮度速度-

亮度速度+ 亮度速度-

灯光组合键 (短按)

开关/关闭背光 背光亮度+ 背光亮度- 切换背光模式 切换背光颜色

背光速度+ 背光速度-

键位布局示意图

OG80 SERIES MECHANICAL KEYBOARDS

We recommend that you read this manual thoroughly before using the product.

Start Reading

LED Indicator Status Description

The indicator is located between **ESC** and **FN**

灯色	灯色说明	灯色说明	灯色说明	灯色说明	灯色说明
Red Light Blinking	Blue Light Blinking / Flashing	Yellow Light Blinking / Flashing	White Light Blinking / Flashing	White Light On / Blinking	White Light On / Blinking
Low Battery Level	Bluetooth Device #1 Re-Connecting / Pairing On	Bluetooth Device #2 Re-Connecting / Pairing On	2.4GHz Device Re-Connecting / Pairing On	Bluetooth Device #3 Re-Connecting / Pairing On	CapLock On/Off / Special Keys Combination Enabled

Hold **FN** first, then corresponding keys to enable special keys combination.

Short Press: Hold FN first, then the corresponding key, and release both keys.

Long Press: Hold FN first, then the corresponding key. Hold for 5 seconds until the indicator starts blinking.

Three Ways of Connecting Devices

Bluetooth Mode

- Toggle the keyboard Mode Switch to the wireless side.
- Short Press **FN** + **ESC** to make the indicator blink in blue, then Long Press **FN** + **ESC** to make the indicator flash in blue.
- Select the pairing device【IQUNIX OG80 BT 1】. The indicator turns off when the keyboard is paired successfully.

In order to complete the pairing of the keyboard with a second or third new Bluetooth device, repeat the instructions from Step ② and replace the “FN+1” with “FN+2” or “FN+3”. The devices will be shown as【IQUNIX OG80 BT 2】and【IQUNIX OG80 BT 3】.

2.4GHz Mode

- Toggle the keyboard Mode Switch to the wireless side.
- Plug the 2.4GHz receiver into your computer.
- Press **FN** + **ESC** to enter 2.4GHz pairing mode. The indicator turns off when the keyboard is paired successfully.

Wired Mode

- Toggle the keyboard Mode Switch to the wired side.
- Plug the USB cable into your device.

*Please find the 2.4GHz receiver under the magnetic cover of ORSC (On-Board Storage Compartment). *Caution: The rated power for the charger must not exceed 5V-1A. Connection to a higher power output will damage the keyboard.

Special Keys Combinations

Long Press FN+TAB: Switch Between Mac/Windows Layout

Short Press FN+Enter: Play/Pause

Short Press FN+Space: Previous

Short Press FN+Next: Next

Long Press FN+Win: WinLock

Long Press FN+Reset: Reset to Default

Short Press FN+B: Battery Level Check

The LED indicator blinks 1, 2, 3... 0 times, which stands for 10%, 20%, 30%,... 100% battery level!

Backlight Keys Combinations (Short Press)

FN+Del: Backlight On/Off

FN+Up: Brightness +

FN+Dn: Brightness -

FN+Home: Backlight Effects Switching

FN+End: Backlight Colors Switching

FN+1: Backlight Speed + FN+2: Backlight Speed -

*Available for Backlit version only.

Keyboard Layout

Follow us: IQUNIX

To learn more details, please reach out to us on official website or social media. Official website: www.iqunix-store.com

Product: OG80 Mechanical Keyboard
Model: OG80 Wireless
Number of Keys: 83
Input: 5V-1A
Battery Specifications: 3.7V 4000mAh
Precautions: See Warranty Card
Manufacturer: Shenzhen Star Storm Technology Co., Ltd.
ASIS, Hongzhenbin Rd, Haha Rd, Gaosun District, Shenzhen, China
Packing List: Keyboard, Dust Cover, USB Cable, 2.4GHz Receiver, Keycap & Switch Picker, Bluetooth Dongle, Manual, Warranty Card

FCC Warning

This device complies with part 15 of the FCC Rules. Operation is subject to the following two conditions:
(1) This device may not cause harmful interference, and (2) this device must accept any interference received, including interference that may cause undesired operation. Any changes or modifications not expressly approved by the party responsible for compliance could void the user's authority to operate the equipment. This equipment has been tested and found to comply with the limits for a Class B digital device, pursuant to part 15 of the FCC Rules. These limits are designed to provide reasonable protection against harmful interference in a residential installation. This equipment generates uses and can radiate radio frequency energy and, if not installed and used in accordance with the instructions, may cause harmful interference to radio communications. However, there is no guarantee that interference will not occur in a particular installation.

If this equipment does cause harmful interference to radio or television reception, which can be determined by turning the equipment off and on, the user is encouraged to try to correct the interference by one or more of the following measures:

- Reorient or relocate the receiving antenna.
- Increase the separation between the equipment and receiver.
- Connect the equipment into an outlet on a circuit different from that to which the receiver is connected.
- Consult the dealer or an experienced radio/TV technician for help.

The device has been evaluated to meet general RF exposure requirement. The device can be used in portable exposure condition without restriction.