

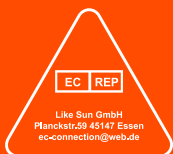
VANTRUE®

VANTRUE
Element 2



User Manual

E2 Element 2 Voice-controlled Dual Dashcam



www.vantrue.net Made in China

胶装说明书

单页尺寸: **122mmX130mm**

封面: 157G双铜纸过哑胶

内页: **70g** 双胶纸



橙色以
1655C为准



轮廓线
不需印刷

Hey, find us here:



VANTRUE

www.vantrue.net/contact



facebook

facebook.com/vantrue.live

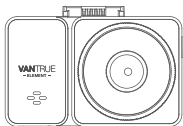
CONTENTS
VERZEICHNIS
CONTENU
ÍNDICE
SPIS TREŚCI
目次
目录

1. What's in the box? ----- 1	3. Installation ----- 6
Was ist in der Box? ----- 44	Installation ----- 49
Qu'y a-t-il dans la boîte? ----- 89	Installation ----- 94
¿Qué hay en la caja? ----- 133	Instalación ----- 139
Co znajdziemy w pudełku? ----- 179	Instalacja ----- 184
同梱内容 ----- 223	取り付け方法 ----- 228
盒内物品清单 ----- 266	安装及使用说明 ----- 270
2. Camera Overview ----- 2	4. Basic Operation ----- 18
Die Übersicht über Kamera ----- 45	Grundlegende Bedienung ----- 61
Vue d'ensemble de la caméra --- 90	Opération de base ----- 106
Descripción de la cámara ----- 134	Operación básica ----- 151
Budowa kamery ----- 180	Podstawowe funkcje ----- 196
ドラレコの概要 ----- 224	基本操作 ----- 240
机身部件说明 ----- 267	功能亮点 ----- 281

CONTENTS
VERZEICHNIS
CONTENU
ÍNDICE
SPIS TREŚCI
目次
目录

5. Specifications -----	42
Spezifikation-----	87
Specification-----	131
Especificaciones-----	177
Dane techniczne-----	220
製品仕様-----	263
产品规格参数-----	302
6. Warranty & Support -----	43
Garantie und Support-----	88
Garantie & Support-----	132
Garantía y Soporte-----	178
Gwarancja & wsparcie-----	221
保証とアフターサービス-----	264
售后服务-----	303

EN 1. What's in the Box?



A. Vantrue E2 Dash Cam



B. R03 Rear Camera



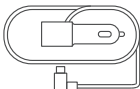
C. GPS Adhesive Mount



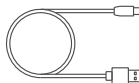
D. Crowbar Mount



E. Cable for Rear Camera (20ft)



F. Car Charger with Built-in Type C Cable (11.5ft)



G. Type C Data Cable (3.3ft, for transferring files only)



H. Electrostatic stickers



I. Wireless Remote Control



J. User Manual



K. Warning Stickers



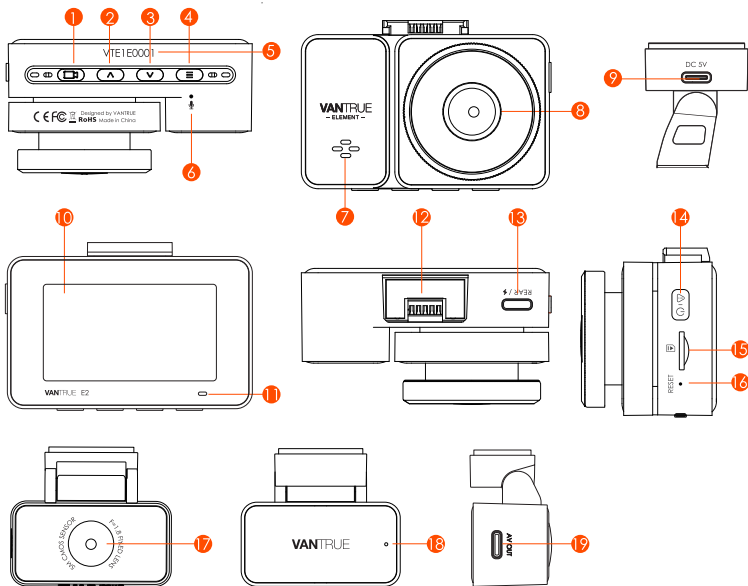
L. 3M Adhesive Stickers

Optional Accessories



M. CPL Filter

2. Camera Overview







NO. Name

Description

1  Button

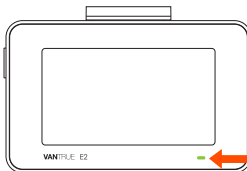
During video recording, you can long press to turn off the screen, and short press to stop recording and enter standby mode; you can confirm the selected option in the menu; when playing back a file, press the button to play/pause the file

2	 Button	During video recording and standby, short press to switch the video window; in menu setting and file browsing, short press to display the previous option, long press to scroll up to display options; in playback mode, short press to fast forward; in WiFi mode, press any key to exit WiFi
3	 Button	During video recording and standby, long press to quickly enter parking mode, and short press to turn on/off the microphone; in menu settings, long press to scroll through menu options, and short press to display the next menu option; during file browsing, long press to scroll to display file, short press to display the next file; in playback mode, short press to pop up the delete file menu; in WiFi mode, press any key to exit WiFi
4	 Button	During video recording, long press to turn on/off WiFi; In standby state, short press to enter the menu or return, and long press to turn on or off WiFi; in WiFi mode, press any key to exit WiFi
5	Serial Number	Serial number for warranty registration
6	Microphone	Records clear audio with the video footage
7	Speaker	Delivers sound during video playback
8	Front Camera	Front facing camera for video recording road events.
9	Power Port	Connects to Type C cable or car charger for external power supply
10	Screen	2.45" LCD Screen
11	REC	Green light means the camera is powered on

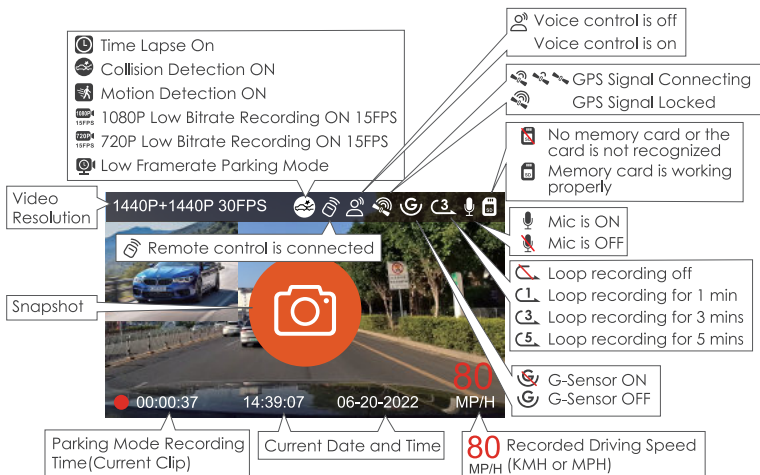
12	Mount interface	Location of the installing mount
13	Type C Port for Rear Camera	Connects the rear camera into this Port; connects the data cable for data transfer
14	 Button	During the video recording, short press will lock the current video and take a picture, long press will shut down; in standby mode, short press will capture the picture, long press will shut down; in WiFi state, short press to exit WiFi, long press to shut down
15	SD Card Slot	Supports Micro SD Card up to 512GB in FAT32, Class 10
16	Reset Button	Short press to restart the camera
17	Rear Camera	Records road events behind the car
18	Indicators for Rear Camera	A green light indicates that the rear camera is connected to power
19	Rear Camera connector	Connection port for rear camera cable

LED Indicator

LED	LED Status	Description
REC	Steady green light	In standby status, or the REC light is set to off
	Blinking green light	Camera is recording



Screen Overview

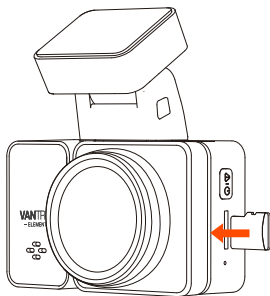


3. Installation


3.1 Installing a Memory Card (Recommended: Vantrue U3 high-speed microSD card)

Please insert a memory card (memory card capacity: 32GB-512GB, card speed: U3/Class10/A2). The dashcam has certain requirements on the card speed of the memory card. For reliable operation, we recommend using a VANTRUE SD card(sold separately).

Memory Card Installation: There is an icon indicating the insertion direction of the memory card. Please push the memory card into the card slot according to the direction indicated by this icon, until a "click" sound is heard in the card slot, indicating that the memory card is inserted properly.



Before using this card, please follow the steps below to format it properly: If the camera is recording, please press the (⏏) button to pause the recording, then press the (☰) button to enter the menu, then enter "System," select the format card, and confirm to format the memory card until it prompts "Formatted successfully."

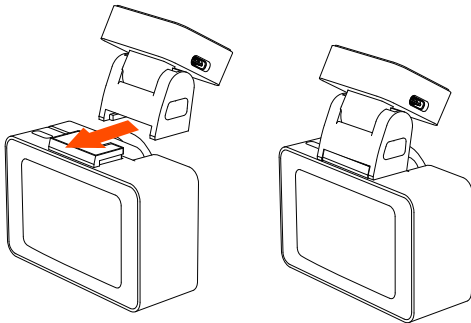
After inserting the memory card, if the screen prompts "Card error, please format" (please note that the camera does not record at this time). Please directly press the  button to enter the menu and start the formatting process.

REMINDER:

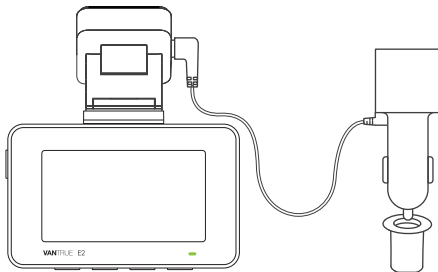
1. We recommend formatting the card once a month to ensure the normal operation of the dash cam.
2. Do not remove or insert the memory card during recording to avoid losing important videos.
3. Please do not use bad cards or low-speed cards on the dash cam, as it is easy to stop or lose the recording due to the failure of a memory card.
4. Before formatting the memory card, please check the event video folder in the SD card to see if there are any videos that need to be saved separately, so as not to delete important videos by mistake.

3.2 Installing the camera onto your windshield

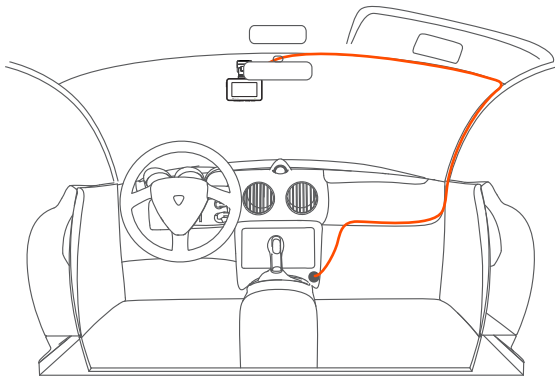
1. Installation of camera mount: Align the mount with the dash cam mount interface then push in until the mount is installed.



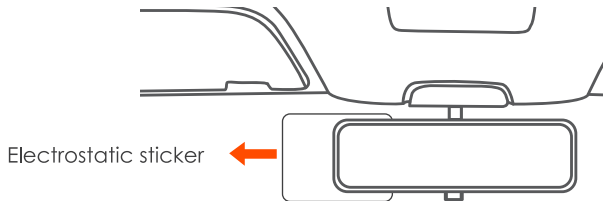
2. Installation of car charger: Connect one end of the car charger to the car cigarette lighter and the other end to the Type C port on the front camera GPS mount. When the green light of car charger is on, it means it is powered on.



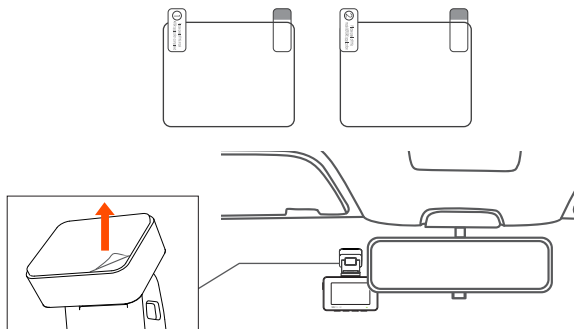
After installing the main camera and rear camera, please arrange the car charger cable in the direction shown in the figure.



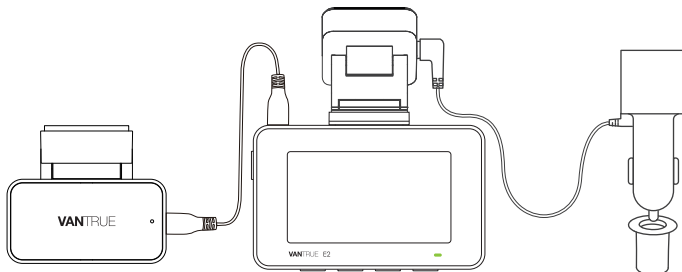
3. Installation of electrostatic stickers: Thoroughly clean the windshield with water or alcohol, then wipe it with a dry cloth. Stick the electrostatic sticker behind the rear-view mirror, which is the recommended position to prevent blocking your view while driving.



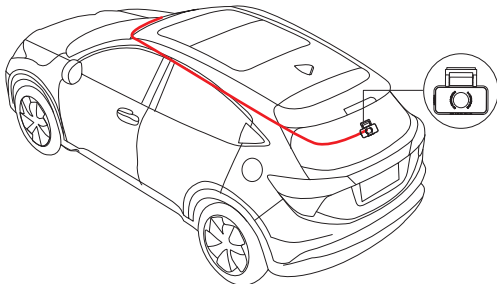
Note: There are two electrostatic stickers numbered 1 and 2. Please remove the protective film from No. 1, paste the electrostatic sticker on the windshield, and then remove the protective film from No.2. Remove the 3M tape from the mount, then fix the mount and camera on the electrostatic stickers.



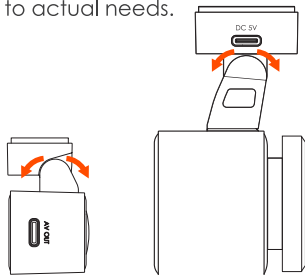
4. Take out the rear camera cable, connect the main camera and the rear camera, and take out the car charger to connect it. After the camera is powered on, choose a suitable location and install it.



5. Rear Camera Installation (Optional): Please select the installation position on the rear windshield. We recommend that you select a position close to the center of the rear windshield, and avoid the defogging line on the rear windshield, so as not to affect the video effect. Remove the protection film of the sticky pad and rear camera lens. Fix the rear camera in the selected position and adjust the angle, then use the rear camera cable to connect the rear camera with the main front camera.



6. The angle of the window glass of each model is different, please adjust the recording angle of the main camera and rear camera up and down according to actual needs.



3.3 APP Download

Please scan the QR code for the relevant version below to download the app and install it.

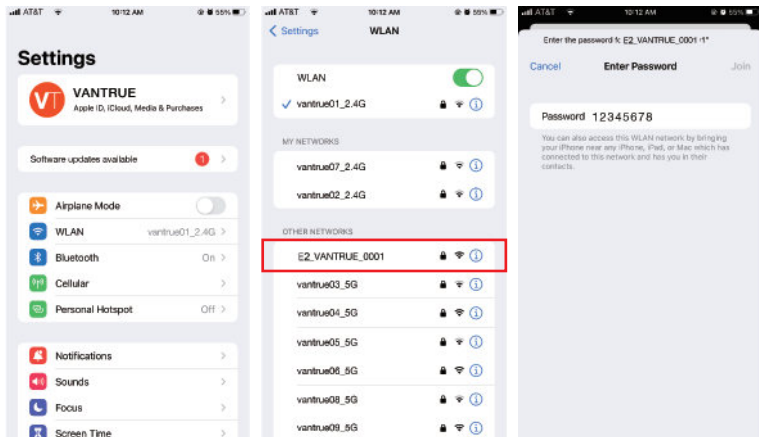
Search for the "Vantrue Cam" app in App Store or Google Play Store to find the app and then download and install it on your phone.



Note: After this camera is successfully connected to your mobile phone through WiFi, it can perform real-time video preview, change camera settings, download files without internet connection, and play back videos on the mobile phone. However, the GPS track playback and video sharing functions will depend on the internet or telecom value-added services (requires you to turn off/disconnect the camera WiFi).

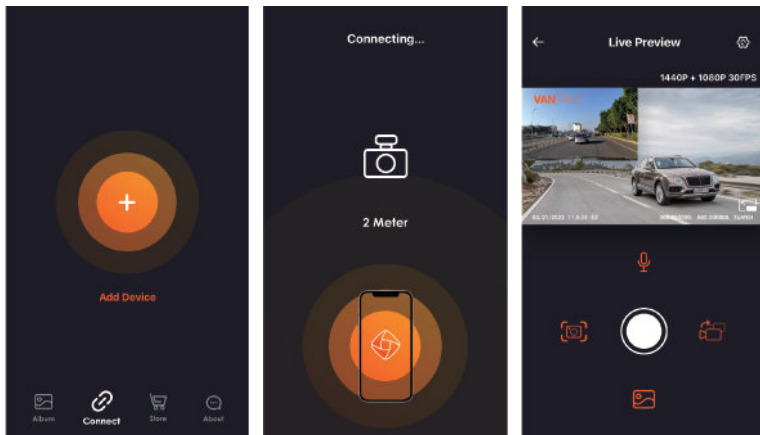
3.4 WiFi Connection

Turn on the WiFi function of the camera, enter the WiFi settings of the mobile phone, then find the WiFi name, such as: E2_VANTRUE_XXXX, and enter the WiFi default password: 12345678 to connect to WiFi.



3.5 APP Connection

After the WiFi connection is successful, click "+" when opening the app for the first time, add the camera model, and then the app will automatically connect to the camera and display the current real-time recording situation of the camera.

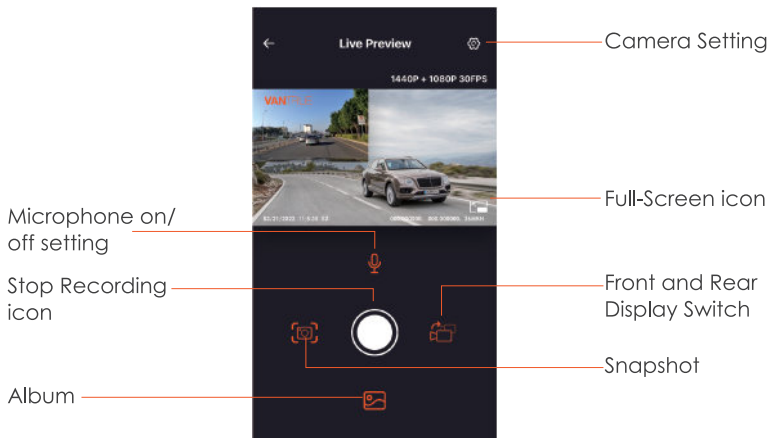


Note:

1. If you do not connect to WiFi before opening the app, the app will prompt you by saying "Please connect to WiFi first", and will automatically jump to the WiFi settings. Please complete the steps to connect to WiFi first.
2. If the WiFi is already connected, but the app jumps to the application permissions of the APP after selecting the model, please check whether the wireless network permission of the app are turned on.

3. The initial password for this device is only used for initial login. In order to prevent potential security risks, please be sure to change the initial password after the initial login to prevent others from logging into your device without authorization or other adverse consequences.
4. If you forget the WiFi password, you can restore the default setting of the device, and the Wi-Fi password of the device will also be restored to the default password(12345678).
5. If the connected WiFi name does not match your dash cam model, the app will prompt you: "Please select the correct model" and automatically jump back to the model selection interface.
6. If there is no connection with the mobile phone after the WiFi is turned on, the camera will automatically turn off the WiFi and return to the recording interface after 10 minutes.

3.5 App Operation



After entering the App's real-time preview, you can perform the following operations:

Video preview: After the app is successfully connected to the camera, enter the real-time preview page, click the full-screen icon or place the phone horizontally, and the real-time screen will automatically switch to the full-screen preview mode. Click the window switch icon to switch the front and rear video windows, but only multi-channel dash cams can use this feature.

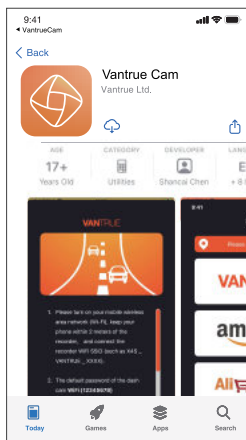
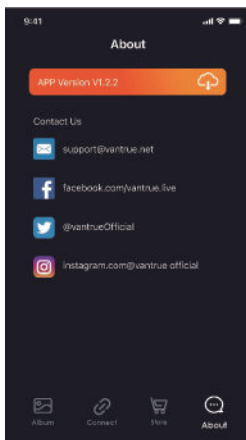
Video playback: The video and photo files recorded on the SD card can be viewed in the app, and the video can be played back after clicking the file.

Video download: You can select the video or picture you want to download in the SD card browsing interface or in the video playback area. After downloading the video, if you play it in the local file of the app interface, you can view the GPS track of the video.

Video snapshot: You can capture the current screen in the real-time preview interface of the app.

3.7 APP Upgrade

Open the "Vantrve Cam" App, connect to the Wi-Fi, and enter "Settings>About> Detect New Version". The App will automatically detect whether its version is the latest version. If there is a new version of the app, follow the prompts and upgrade the version.



4. Basic Operation

4.1 Menu Settings

The E2 dash cam has 3 function menus, which are: record settings, system settings, and file browsing. You can set your dash cam according to your requirements with these function setting.

Press the  button, pause the video first, then press the  button to enter the menu settings.



Record



System



Files

A. Record Setup

-Resolution: The E2 camera has 2 resolution modes: Front + Rear dual recording mode, or Single front recording mode.

Front+Rear Camera:1944P+1944P 24FPS; 1440P+1440P 30FPS;
1440P+1080P 30FPS; 1080P+1440P 30FPS; 1080P+1080P 30FPS; 1080P+720P
30FPS; 720P+1080P 30FPS; 720P+720P 30FPS

Front Camera only:2592x1944P 30FPS; 2560x1440P 30FPS; 1920x1080P
30FPS; 1280x720P 30FPS

-Loop Recording: Default setting is 3 min. You can choose the options among 1/3/5 min and OFF.

-G-Sensor: Select the level of G-sensor you need, then you can set 3 directions (Front + Rear/Left + Right/Up + Down). The G-sensor value in each direction can be selected as 1/2/3/4/5/Off. The higher the sensitivity level, the easier it is to trigger event recording. G-sensor is most sensitive when set to 5.

- Audio Recording:** The default is ON. Set recording to on or off.
- Exposure:** The default value is +0.0. Adjust the exposure of the lens.
- REC Status Light:** Default setting is ON. You can choose to turn on/off the recording status light.
- WDR:** Default is on. WDR enables the camera to provide near-perfect exposure under different lighting conditions. You can choose to turn WDR on/off.
- Rotate Display:** Default is off. You can choose to flip the video screen up and down(180 degrees).
- Rear Mirror:** The default is On. After it is turned on, the rear camera image is displayed in mirror mode.
- Number Plate:** Select the number or letter to be set. After setting, your license plate number can be displayed in the recorded video.
- Stamp:** Enable or disable the watermark stamp on video and photos. The watermark stamp includes time and date label, VANTRUE label, license plate number, GPS location information, and speed label. All enabled by default.
- Time Lapse:** The default value is disabled. You can choose to enable 1FPS/5FPS/10FPS/15FPS.
- Low-light Night Vision in Parking Mode:** Default is on. When turned on, it can optimize the recording effect of videos in parking mode.
- Parking Mode:** You can choose the parking mode you need, including Collision Detection/Motion Detection/Low Bitrate Recording/Low Framerate Mode/OFF.
- GPS Settings:** GPS is enabled by default. GPS ON/OFF settings, speed unit settings, and GPS information are all set here.

B. System Setup

- Language:** Available languages are English/Français/Español/Deutsch/Italiano/简体中文/русский/日本語/Polksi.
- WiFi:** The default setting is Off. After WiFi is enabled, mobile phones can

connect to WiFi and operate the dashcam through mobile phone interfaces.

-Voice Control: The default sensitivity is Standard. Voice commands can be recognized after the option is turned on. You can choose options such as low sensitivity/high sensitivity/standard/off.

-Voice Content: Voice recognition commands. You can use different commands to remote control the camera to work.

-Format Memory Card: Format all data on the memory card.

-Format Reminder Setup: Select the reminder options: 15 Days, 1 Month, and Off. Default is off.

To prevent you from forgetting to format the memory card regularly, we have added a format reminder time setting. You can choose to be reminded after 15 days or 1 month, and calculate 15 days or 1 month from the set date. When the time is up, you can choose "OK" to format, or choose "Next."

Note: If you changing the format reminder option, the timing will restart as soon as the option is changed.

-Date&Time: There are two ways to set the time and date: 1. GPS automatic update, 2 Manual date/time setting. GPS automatic update is enabled by default.

GPS automatically updates the date and time based on your time zone, so you need to select the calibrate time zone first; you can also choose to turn off GPS automatic update, turn on Manual date/time setting, and manually calibrate date and time.

The date format and time zone settings can also be set under this menu.

-Auto LCD Off: Set the time to automatically turn off the LCD display after no operation.

If you set the Auto LCD Off to 3 min, the camera's LCD screen will auto light off after 3 min but recording will continue. If the setup is Off, the screen will not turn off. You can choose the options among 30s, 1Min, 3Min and OFF.

-Device Sound: Set the volume of the device. The default volume level is

3, the lowest is 0, and the highest is 5.

-Prompt Tone: According to different situations, the dash cam is set with 5 kinds of prompt tones, which are power-on/off sound, keys sound, file locked sound, format sound, and abnormal stop recording reminder. All prompt tones are turned on by default.

-Frequency: Different countries have different frequencies. In order to avoid affecting the video, you can choose 50Hz or 60Hz frequency according to different regions.

-System Info: Check the current model, firmware version, and the Vantrue official website.

-Certifications: You can view the certification information of E2 camera.

-Default Settings: Reset the device back to factory settings.

C. Files

Review the video and photo files recorded by the camera.

-Event: Critical event videos detected by G-Sensor activity or manually locked by user.

The file name format is 20300128_140633_0008_E_A.MP4

-Normal: Standard videos recorded. This folder saves loop recording video, parking mode video, and time-lapse video. The file name format of Loop Recording video is: 20300128_140633_0008_N_A.MP4, 20300128_140633_0008_N_B.MP4; the file name format of Parking Mode video is: 20300128_140633_0007_P_A.MP4, 20300128_140633_0007_N_B.MP4; the file name format of Time-Lapse video is: 20300128_140633_0006_T_A.MP4, 20300128_140633_0006_N_B.MP4.

-Photo: Photos files. The file name format of Loop Recording video is: 20300128_140633_0005A.JPEG、20300128_140633_0005B.JPEG.

-All: All the standard videos and critical event videos recorded.

Note: The suffix A represents the files recorded by the front camera, the suffix B represents the files recorded by the rear camera.

4.2. Specifications

4.2.1 Loop Recording

After inserting the memory card and connecting the power, the E2 dash cam will automatically turn on and enter loop recording. The duration of each recorded video will be saved based on the loop recording time you set, saved in the normal video folder.

When the capacity of the normal video folder reaches 70% of the total capacity, the new loop recording file will automatically overwrite the original loop recording files. After this function is enabled, the video file will automatically overwrite the loop, so as not to stop recording during the driving process.

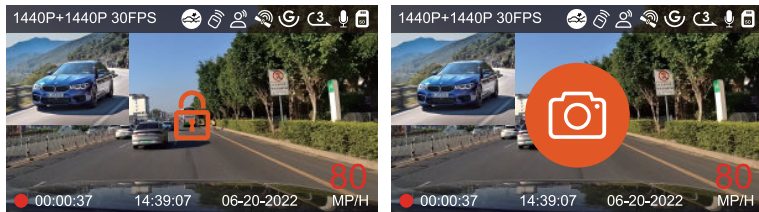
Note:

1. The normal operation of the loop recording function is very dependent on the speed of the memory card, so please format the memory card regularly to avoid problems such as excessive memory card files and card aging that affect the normal loop recording.
2. Please check the loop recording video regularly to avoid the necessary videos being overwritten by loop.
3. When Loop Recording is turned off, the camera will record video in 5 minute each clips, but it will not overwrite old videos when the storage card is full.
4. After the loop recording is turned off, the duration of each video will be 20 mins. When recording until the memory card is full, the camera will stop recording, and prompt "Card full!"


4.2.2 Event Recording

Event video is triggered by the G-sensor(Gravity Sensor), which can be automatically triggered or manually locked.


During driving, in case of special circumstances, the camera will automatically lock for event recording or you can manually lock it for event recording.

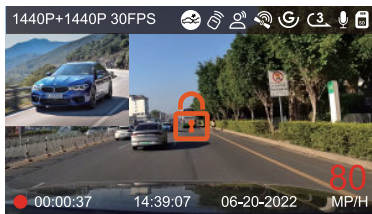


To manually lock the video, just press the  button to lock the current video and snapshot.

During the lock video period, you can press the  button to capture multiple times. After recording, the video will be automatically saved in the event video folder, and the photo will be saved in the photo folder.

Automatic locking event video is triggered when the car is hit/shaken. The dash cam detects the vibration and automatically locks the current video, which is saved in the event video folder.

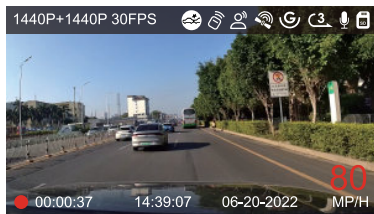
During the locked recording period, you can also press the  button to take a picture. After the event video recording ends, the video will be saved in the event video folder, and the photo will be saved in the photo folder.

**Note:**

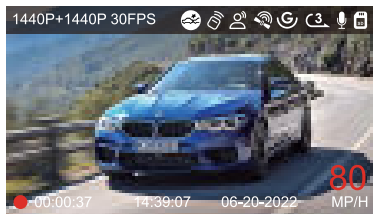
1. The sensitivity of the automatic locking video trigger is determined by the sensitivity of the collision. The higher the sensitivity setting, the greater the probability of being triggered.
2. The total capacity of the event video file accounts for 30% of the total capacity of the current memory card. When the event video file reaches the upper limit, the new event video file will automatically overwrite the old event video file. It is recommended to periodically check and save your event video files to avoid loss.
3. Lock recording will not trigger in either of the following situations: Loop recording is off or Time lapse recording is on.

4.2.3 Switch the front and rear camera window display

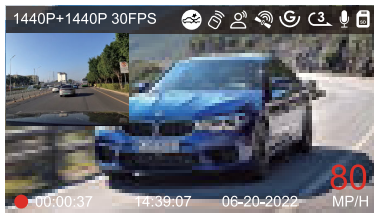
You can press the  button to switch the display to make the front or rear camera shows bigger on the LCD.



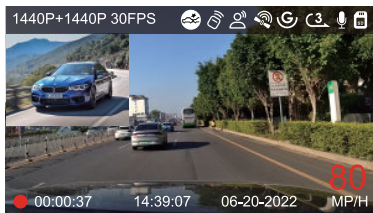
Single Front Recording Display



Single Rear Recording Display



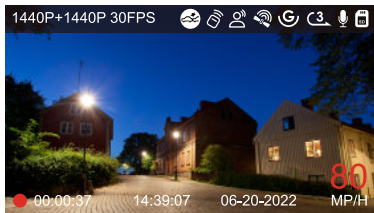
Front(Small)+Rear(Big)



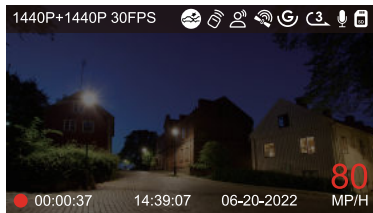
Front(Big)+Rear(Small)

4.2.4 Low-light Night Vision in Parking Mode

In order to enhance the safety of parking at night, we make full use of the lens performance combined with low-light night vision technology to improve the night vision effect in parking mode. This function is in the open mode by default. It will be triggered only after entering the parking mode and will not affect normal recording.




Turn on Low-Light Night Vision
in Parking Mode



Turn off Low-Light Night Vision
in Parking Mode

4.2.5 Parking Mode(When the parking mode is turned on, the time-lapse video function will not work. These two functions cannot run at the same time)

Parking Mode operates as a sentry function under different situations. You can switch to different parking monitoring modes according to different parking situations.

After the parking mode is turned on, there are two ways to record: 1. You can wait for 5 minutes to start automatically; 2. long press the  button to begin manually.


Note:

1. To ensure the camera works properly in park mode, please use the hardware kits or other stable and continuous power supply to power the dash cam.
2. When the temperature in the car is as high as 60°C(140°F), it is recommended that you turn off the camera to avoid abnormal operation of the camera caused by the high temperature.
3. Time-lapse video recording and parking mode (including collision


detection, motion detection, low bitrate recording, and low framerate mode) can only be enabled one at a time. When one is enabled, the other will be automatically disabled.

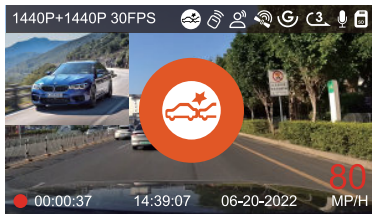
- All videos recorded in parking mode(Collision Detection, Motion Detection, Low Bitrate Recording, Low Framerate mode) will be saved in the normal video folder. In order to prevent the video in parking mode from being overwritten in a loop, please check and save the required files in time to prevent loss.

Collision Detection

When collision detection is enabled, the  icon will be displayed on the recording interface, indicating that the camera is currently using collision detection mode. Collision detection sensitivity can be adjusted from 1 to 5 levels. You can adjust according to your habits, as well as the surroundings of the car.




When the Collision Detection is turned on, and no movement is detected after 5 minutes of recording (5-minute entry mechanism for short), then Collision Detection is activated with a  icon in the middle of the screen, and the camera automatically turn off. When the dash cam is turned off, it will start to record for 1 minute after being shaken, then turn off the dash cam again.



Note: If the dash cam continues to be hit during the collision detection recording, it will exit the collision detection mode and enter normal recording, restarting the 5-minute entry mechanism.

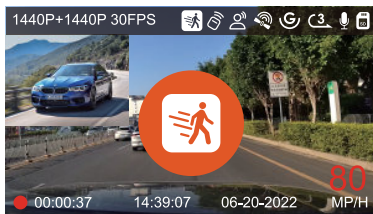
Motion Detection

When the motion detection is turned on, the  icon will be displayed on the recording interface, indicating that the dash cam is currently in motion detection mode. Motion detection has three levels: low/medium/high that can be adjusted, and the corresponding detection ranges for motion detection is 6.6ft/13ft/19.7ft.





When the motion Detection is turned on, and no movement is detected after 5 minutes of recording, then an orange icon will appear in the center of the screen, and the screen will turn off after 3 minutes.


Video recording process: When the camera detects object movement or car vibration, it will automatically trigger video recording. E2 comes with a pre-recording function. When the motion detection recording is over, the camera will load the pre-recorded video into the motion detection video and save it to the normal folder.





Note: Motion detection mode can only be engaged when the camera is turned on. Once the camera is turned off, the motion detection mode will not work.


Low Bitrate Recording

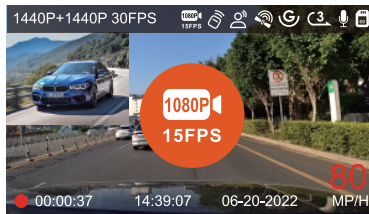
When Low Bitrate recording is enabled, the icons  or  will be displayed on the recording interface, depending on whether you choose 1080P 15FPS or 720P 15FPS.

If no movement is detected after 5 minutes of recording, there will be a  icon that appears in the center of the screen. The resolution of all current video will be automatically switched to 1080P 15FPS or 720P 15FPS for recording, and the recording duration will be determined according to the currently set loop recording duration. When the camera vibrates or is moved, it will automatically exit, wait 5 minutes, and enter again.

Modus mit Niedriger Bitrate

Wenn die Aufzeichnung mit niedriger Bitrate aktiviert ist, wird das Symbol  oder  in der unteren rechten Ecke des Bildschirms angezeigt, je nachdem, ob Sie 1080P 15FPS oder 720P 15FPS wählen.

Wenn nach 5 Minuten Aufnahme keine Bewegung erkannt wird, erscheint ein Symbol  in der Mitte des Bildschirms. Die Auflösung aller aktuellen Videos wird für die Aufnahme automatisch auf 1080P 15FPS oder 720P 15FPS umgeschaltet, und die Aufnahmedauer wird entsprechend der aktuell eingestellten Daueraufnahmedauer bestimmt. Wenn die Kamera vibriert oder bewegt wird, wird sie automatisch den Modus verlassen, 5 Minuten warten und wieder eintreten.



Notiz: Die Aufzeichnung mit niedriger Bitrate muss durchgeführt werden, wenn die Kamera eingeschaltet ist. Sobald die Kamera ausgeschaltet ist, funktioniert die Aufzeichnung mit niedriger Bitrate nicht.

Modus mit niedriger Framerate

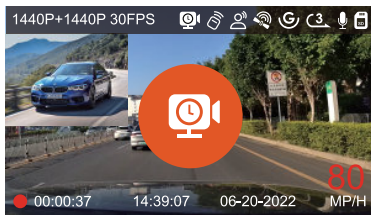
Wenn der niedrige Frameratemodus ausgewählt ist, nimmt die Kamera entsprechend der Auswahl von 1FPS/5FPS/10FPS/15FPS auf.



Note: Low Bitrate recording can only be engaged when the camera is turned on. Once the camera is turned off, the Low Bitrate recording will not work.

Low Framerate mode

When the low framerate mode is selected, the camera will record according to your selection among 1FPS/5FPS/10FPS/15FPS. For example, if you select 1FPS and the current video resolution frame rate is 30FPS, the camera will generate a 30FPS video per second. Low framerate mode can greatly preserve the integrity of the video and save space on the memory card.



[Normal Recording Time = Low Framerate Recording Time (Sec) x Recording Frame Rate FPS x Low Framerate Option]
 (Time should be converted into seconds)

FCC Statement

This equipment has been tested and found to comply with the limits for a Class B digital device, pursuant to part 15 of the FCC Rules. These limits are designed to provide reasonable protection against harmful interference in a residential installation. This equipment generates, uses and can radiate radio frequency energy and, if not installed and used in accordance with the instructions, may cause harmful interference to radio communications. However, there is no guarantee that interference will not occur in a particular installation.

If this equipment does cause harmful interference to radio or television reception, which can be determined by turning the equipment off and on, the user is encouraged to try to correct the interference by one or more of the following measures:

- Reorient or relocate the receiving antenna.
- Increase the separation between the equipment and receiver.
- Connect the equipment into an outlet on a circuit different from that to which the receiver is connected.
- Consult the dealer or an experienced radio/TV technician for help.

Caution: Any changes or modifications to this device not explicitly approved by manufacturer could void your authority to operate this equipment. This device complies with part 15 of the FCC Rules. Operation is subject to the following two

conditions: (1) This device may not cause harmful interference, and (2) this device must accept any interference received, including interference that may cause undesired operation.

RF Exposure Information

This equipment complies with FCC radiation exposure limits set forth for an uncontrolled environment. This equipment should be installed and operated with minimum distance 20cm between the radiator and your body

ISED Statement

English: This device contains licence-exempt transmitter(s)/receiver(s) that comply with Innovation, Science and Economic Development Canada's licence-exempt RSS(s).

Operation is subject to the following two conditions:

(1) This device may not cause interference.

(2) This device must accept any interference, including interference that may cause undesired operation of the device.

The digital apparatus complies with Canadian CAN ICES-3 (B)/NMB-3(B).

French: Cet appareil contient des émetteurs/récepteurs exempts de licence qui sont conformes aux RSS exemptés de licence d'Innovation, Sciences et Développement économique Canada.

L'exploitation est soumise aux deux conditions suivantes :

(1) Cet appareil ne doit pas provoquer d'interférences.

(2) Cet appareil doit accepter toute interférence, y compris les interférences susceptibles

de provoquer un fonctionnement indésirable de l'appareil.

L'appareil numérique du ciem conforme canadien peut - 3 (b) / nmb - 3 (b).

This device meets the exemption from the routine evaluation limits in section 2.5 of RSS 102 and compliance with RSS 102 RF exposure, users can obtain Canadian information on RF exposure and compliance.

cet appareil est conforme à l'exemption des limites d'évaluation courante dans la section

2.5 du cnr - 102 et conformité avec rss 102 de l'exposition aux rf, les utilisateurs peuvent

obtenir des données canadiennes sur l'exposition aux champs rf et la conformité.

This equipment complies with Canada radiation exposure limits set forth for an uncontrolled environment.

Cet équipement est conforme aux limites d'exposition aux rayonnements du Canada établies pour un environnement non contrôlé.

This equipment should be installed and operated with minimum distance 20cm between the radiator & your body.

Cet équipement doit être installé et utilisé à une distance minimale de 20 cm entre le radiateur et votre corps.

The device for operation in the band 5150– 5250 MHz is only for indoor use to reduce the potential for harmful interference to co-channel mobile satellite systems.

L'appareil destiné à fonctionner dans la bande 5150-5250 MHz est uniquement destiné à une utilisation en intérieur afin de réduire le potentiel d'interférences nuisibles aux systèmes mobiles par satellite cocanaux.