



# ShenZhen Huaxinwei communication technology Co.,Ltd.

## Antenna test report

Customer Name: XunRui

Project Name: S6319A

Designer: Li Jun xian

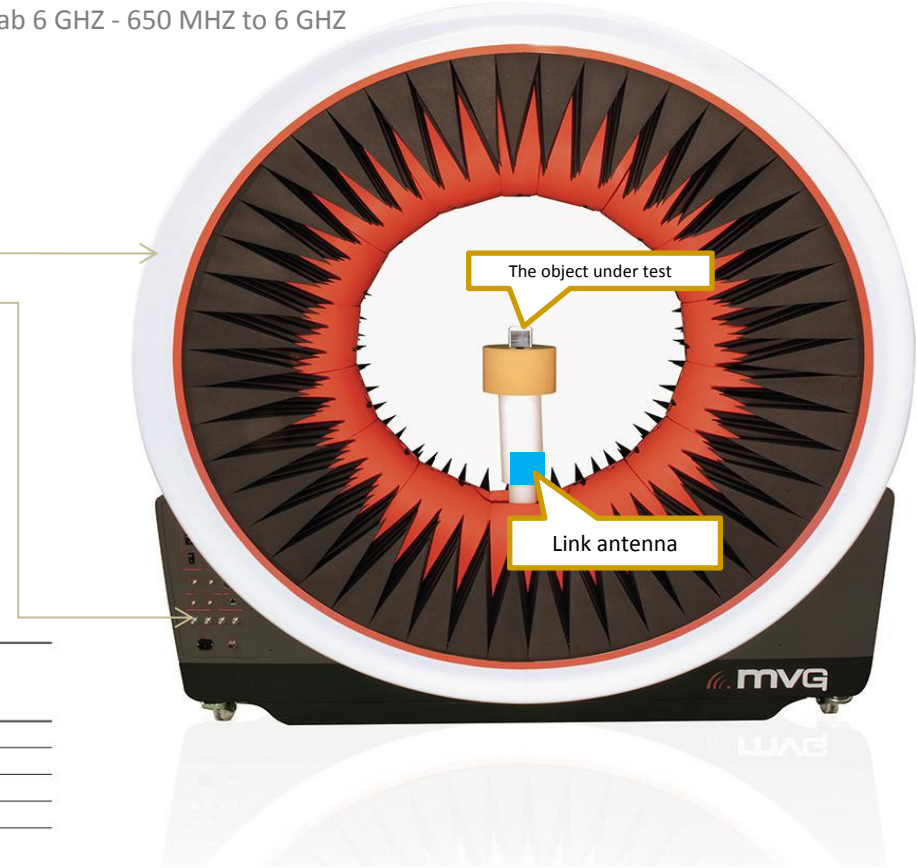
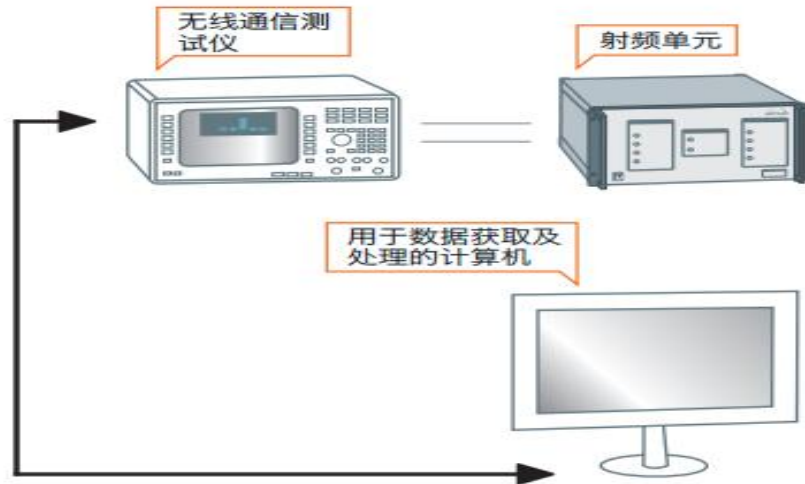
Date: 2023/10/10



The customer name		XunRui	Project Name	S6319A
NO.	project	<b>Detailed above</b>		
1	spectrum	GSM850/900/1800/1900+WCDMA-B18+LTE-B1/3/7/8/19/20/40+GPS/WIFI/BT		
2	Project type	The mobile phone		
3	Antenna space area			
4	Feed point type			
5	The sensitivity			
6	Type of antenna			
7	The length of the PCB board			
8	note	Debugging prototype		
RF		Li Jun xian	1820807601	

# 1、 Test system and test equipment

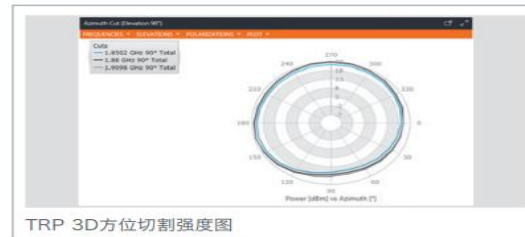
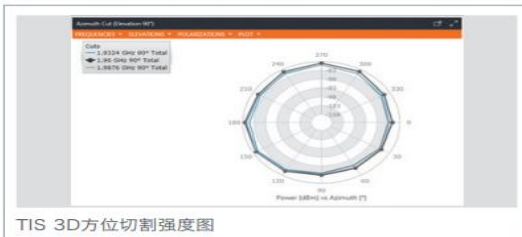
System Brand: MVG(SATIMO) measurement features: gain • pattern beamwidth cross polarization resolution sidelobe level 3D cavity reflectance at any polarization cavity reflectance (line or arc) antenna efficiency TRP, TIS, EIRP and EIS. Frequency band: StarLab 6 GHz - 650 MHz to 6 GHz



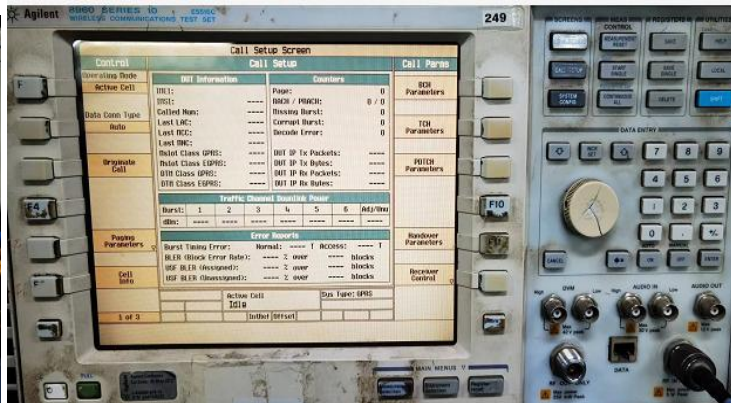
TIS预计测量时间 (一个信道每隔30° 取样)

灵敏度算法 \ 标准	GSM GPRS EDGE	CDMA 1 x RTT 1 x EvDO	WCDMA HSDPA LTE FDD/TDD	Wi-Fi 802.11 a/b/g/n	CTIA 批准方法
RSSI模式+线性化+TIS补偿	8 min		10 min		是
EIS模式+TIS补偿		5 min		5 min	是 <sup>2</sup>
快速CDMA		8 min			No
EIRP模式+TIS补偿				10 min	No

1、根据RTC  
2、根据协议



# Test Equipment

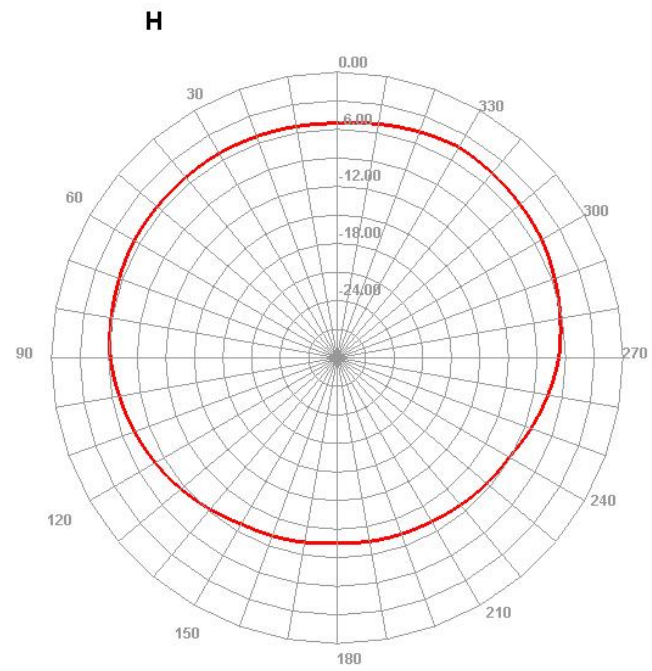
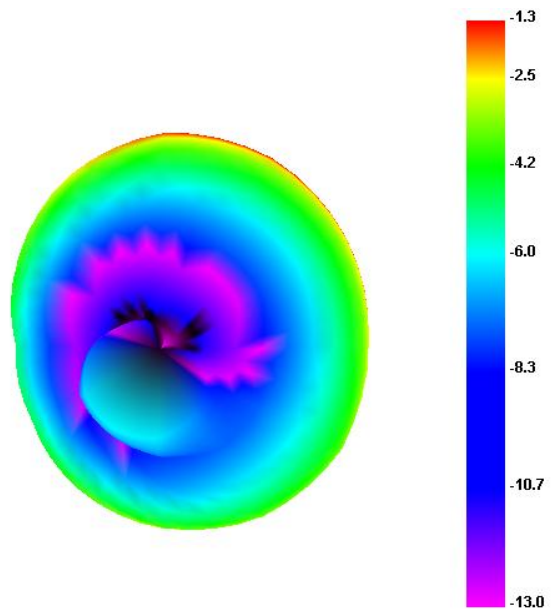


## Efficient ( 2G+3G+4G+2. 4G-WiFi /BT)

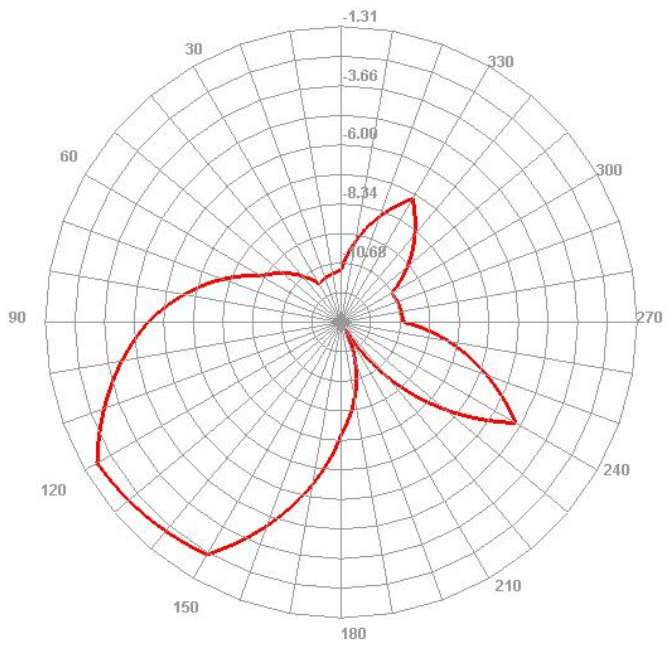
GSM天线增益	GSM850: -1.31dBi GSM900: -1.1dBi DCS1800: +1.58dBi PCS1900: +1.75dBi
WCDMA天线增益	W-B2:1.75dBi; W-B4:-1.0dBi; W-B5: -1.31dBi
FDD/TDD频段天线增益	B1: +1.55dBi B3: +1.58dBi B7: +0.87dBi B8: -1.1dBi B19: -1.31dBi B20: -1.4dBi B40: 1.38dBi
2.4G-WIFI天线增益	+1.02dBi
BT天线增益	+1.02dBi
GPS天线增益	+1.19dBi



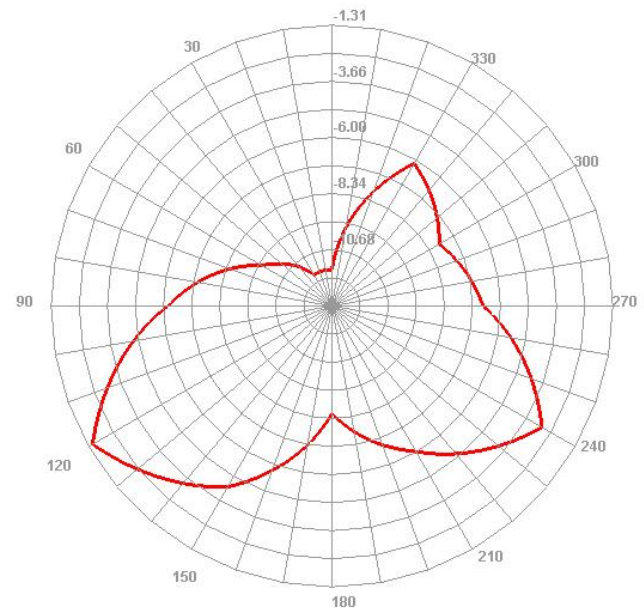
# GSM 850



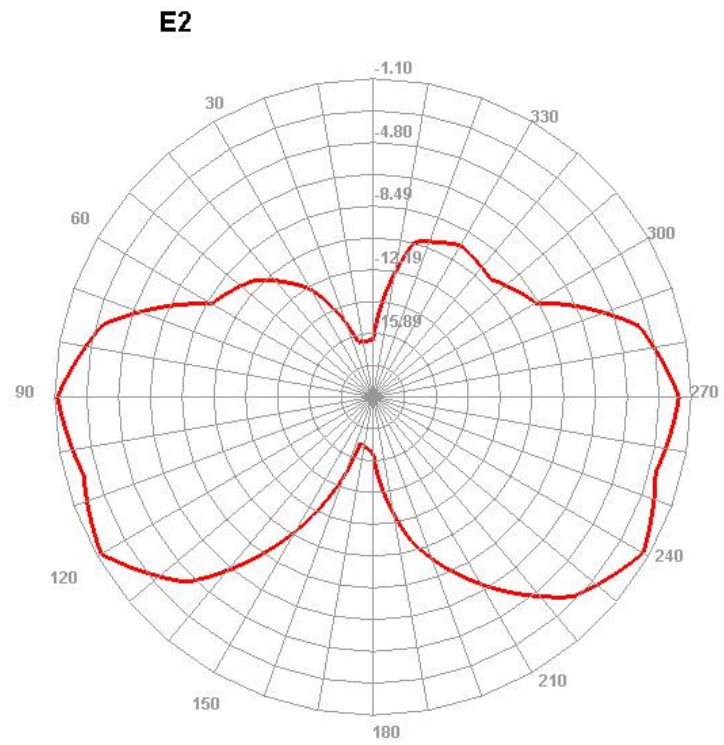
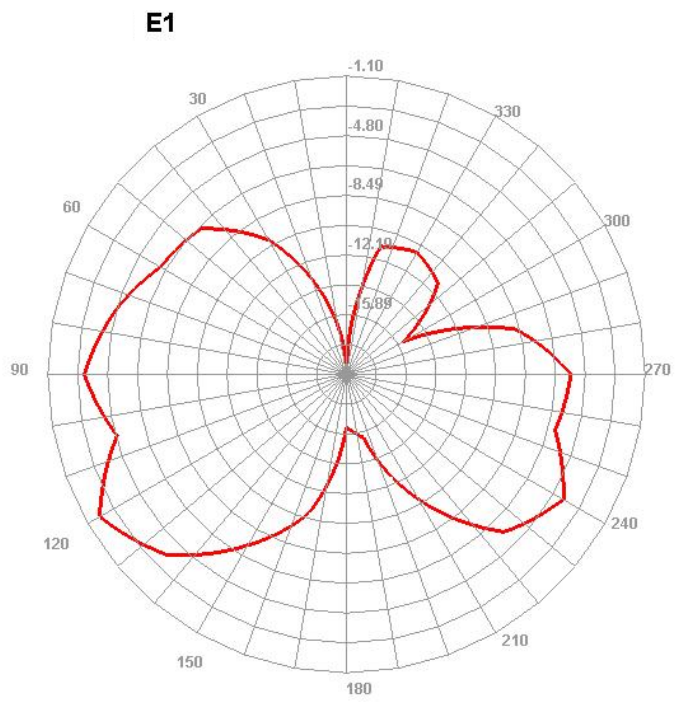
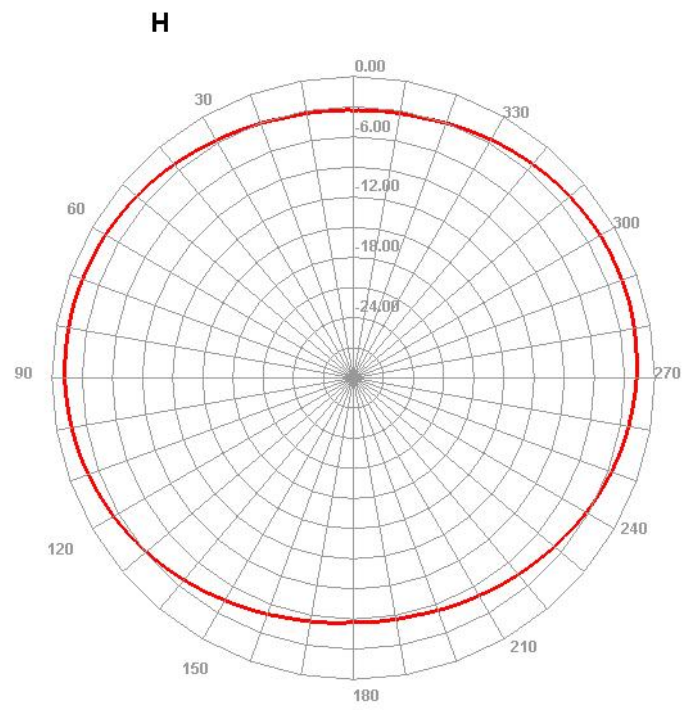
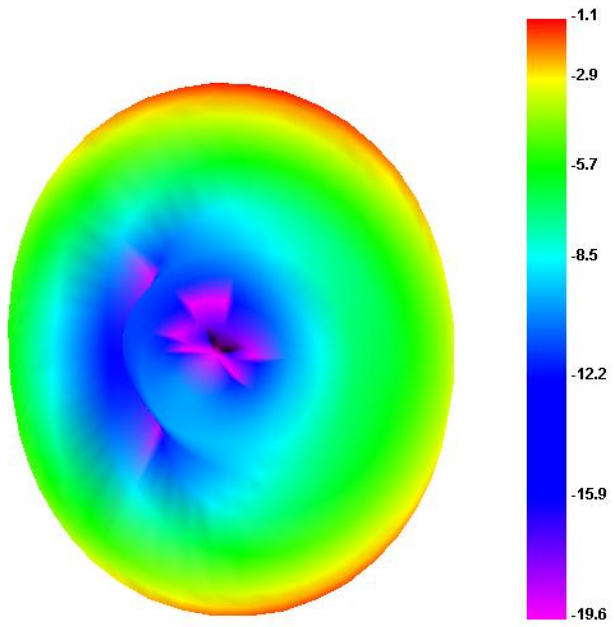
### E1



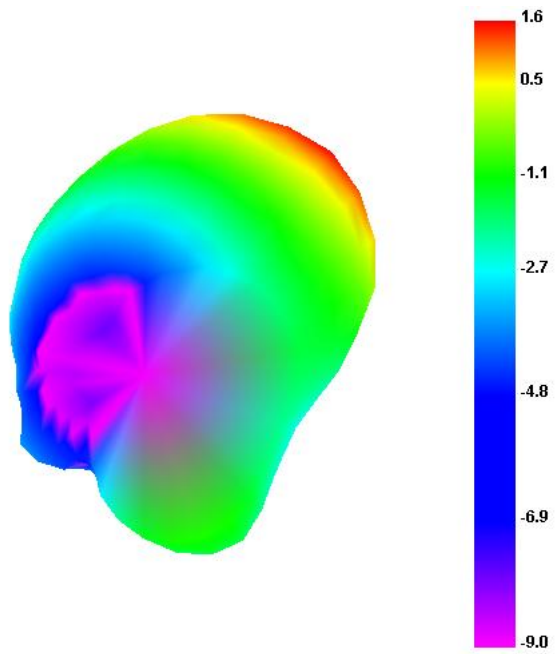
### E2



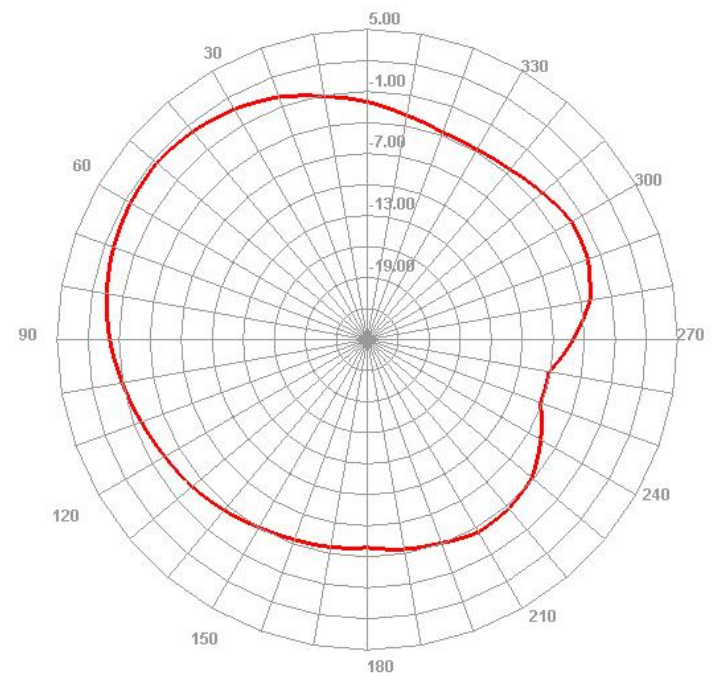
# GSM900



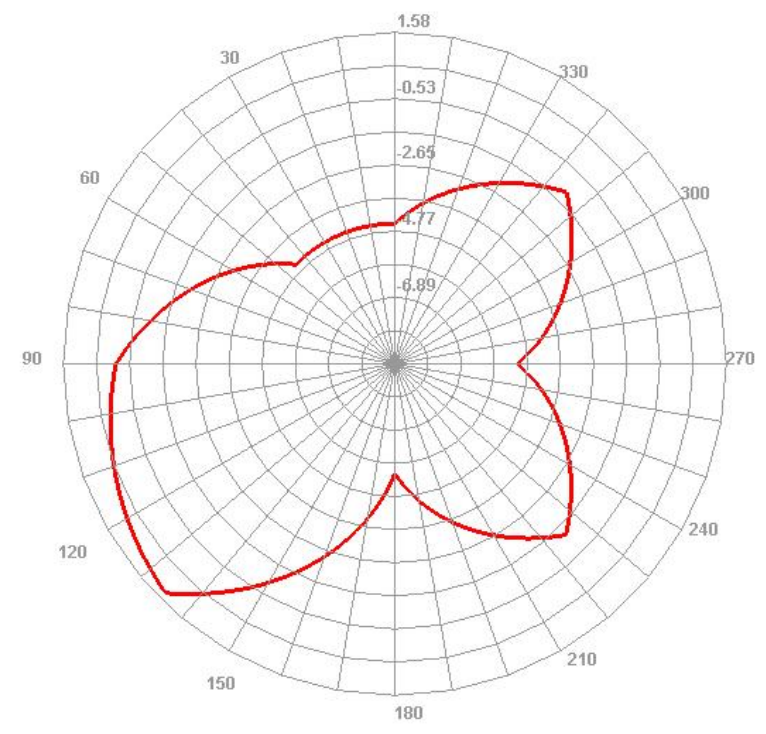
# DCS1800



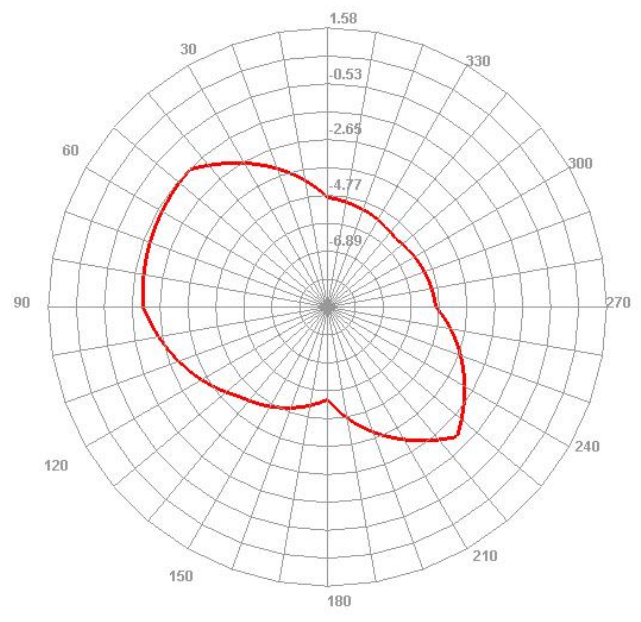
### H



### E2

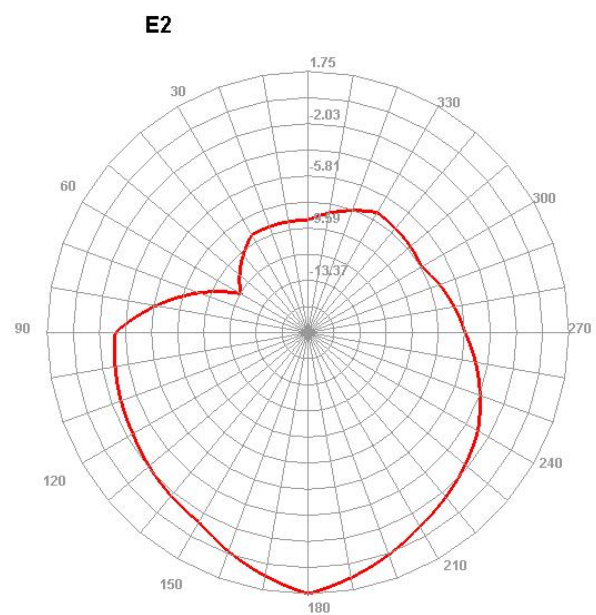
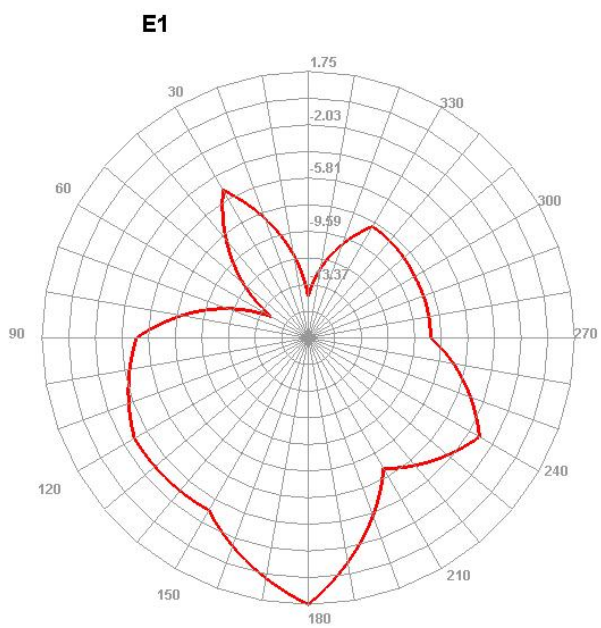
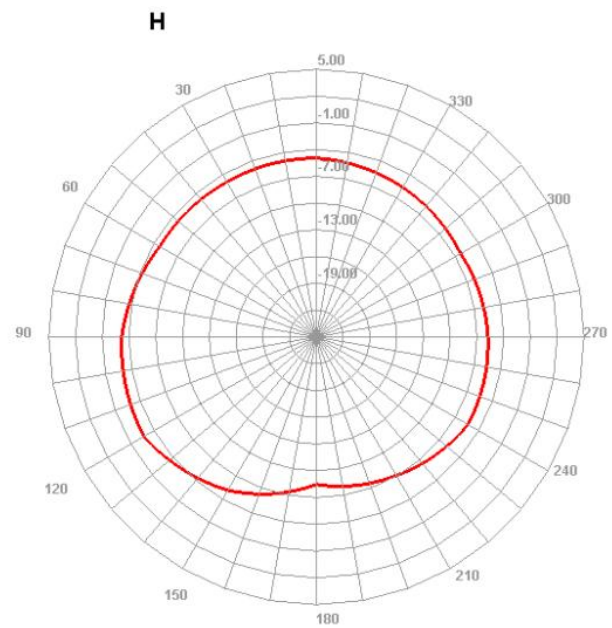
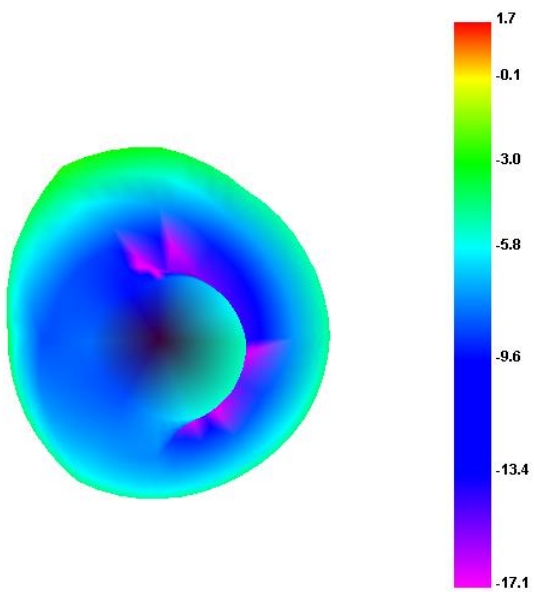


### E1

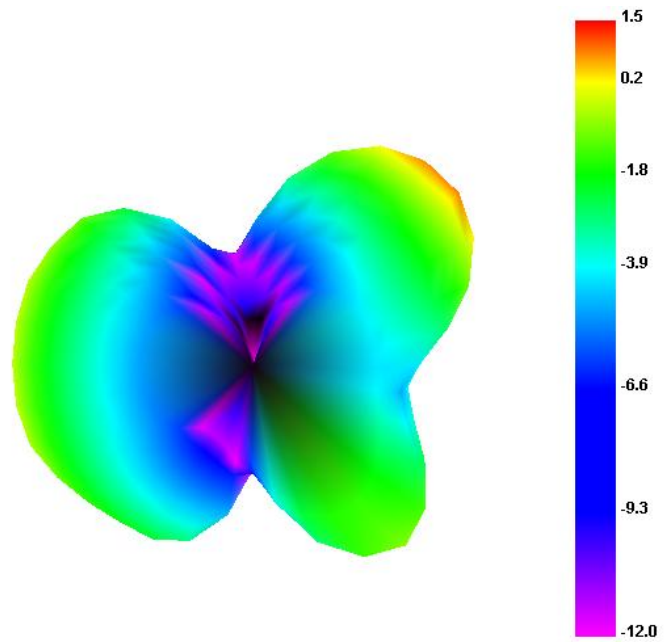




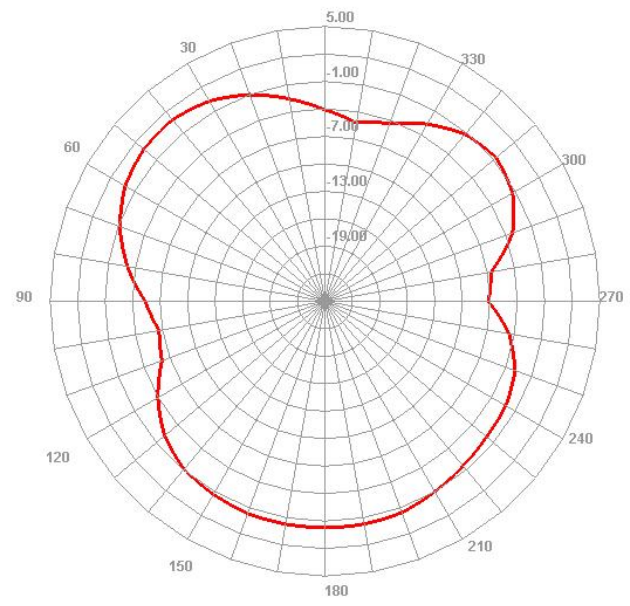
# PCS1900



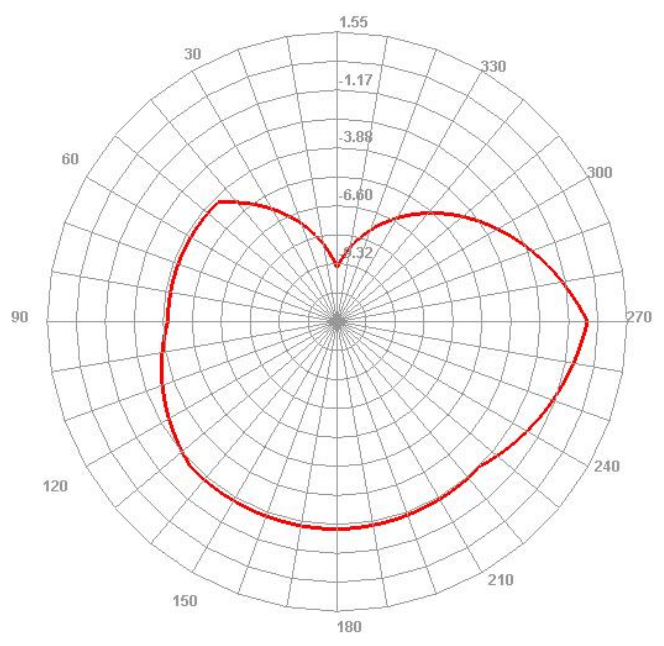
**W2100**



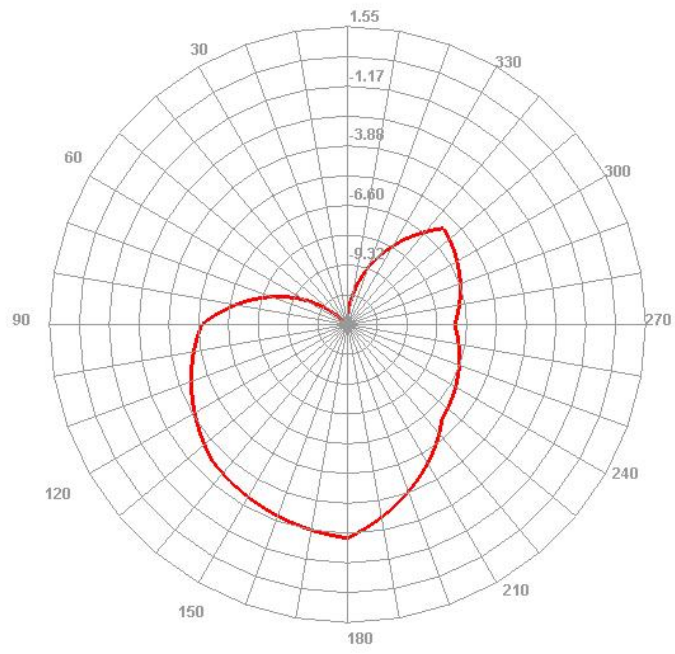
**H**



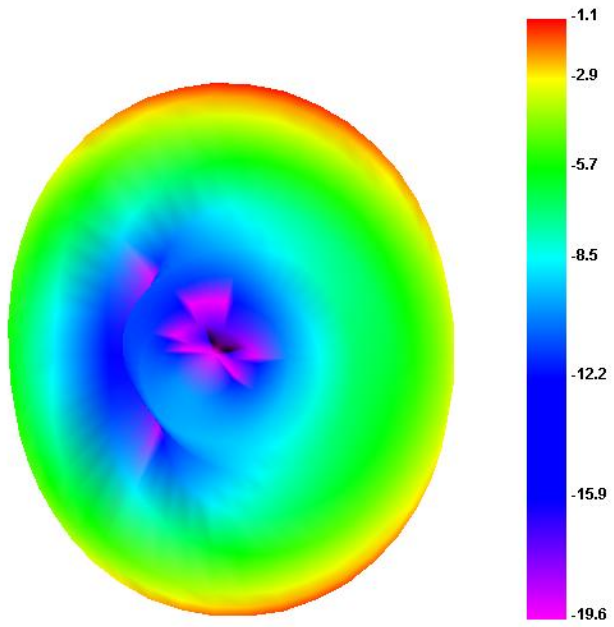
**E1**



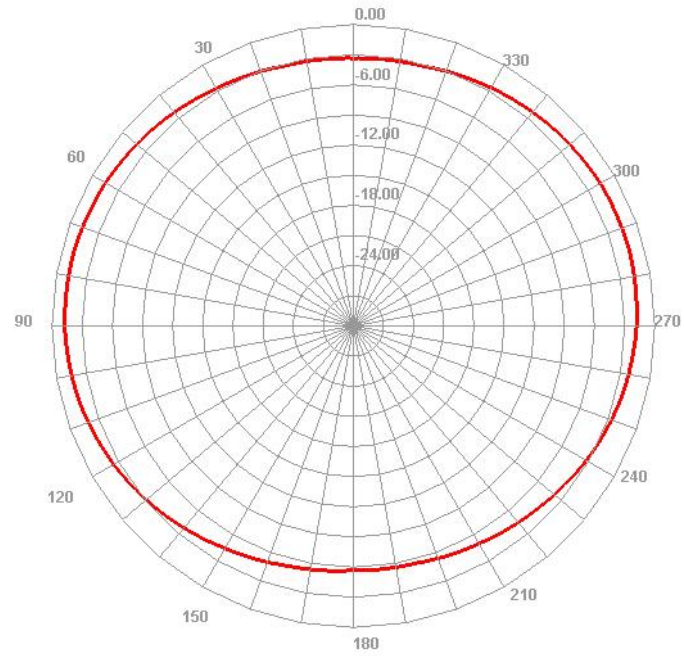
**E2**



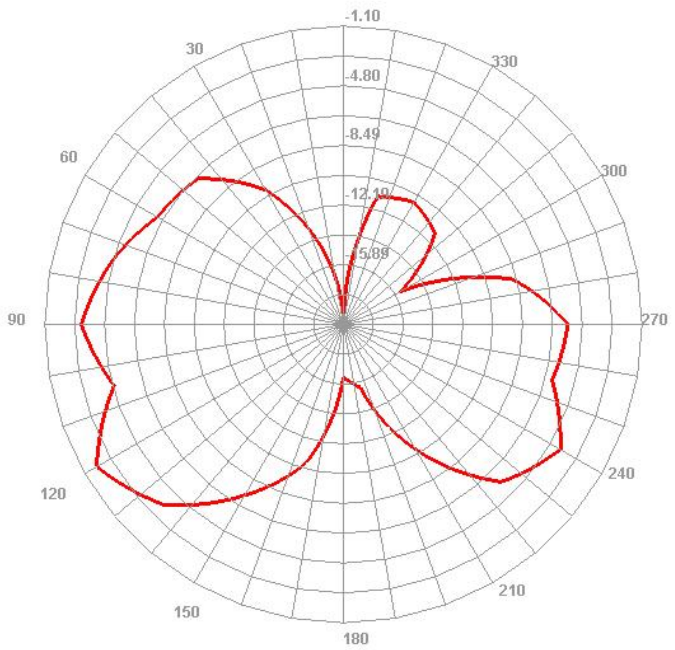
**W900**



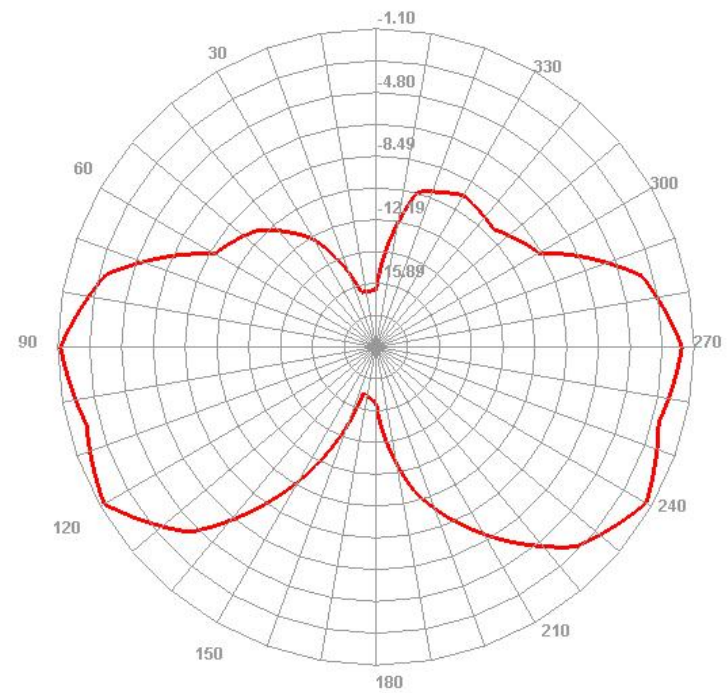
**H**



**E1**

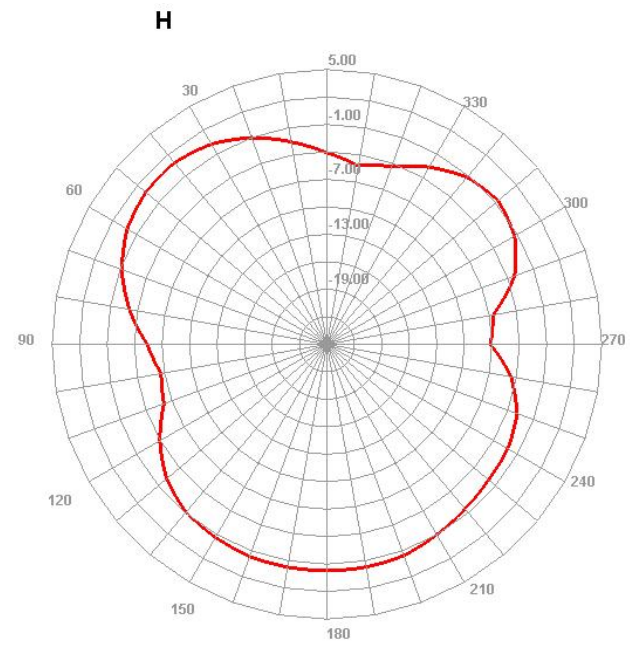
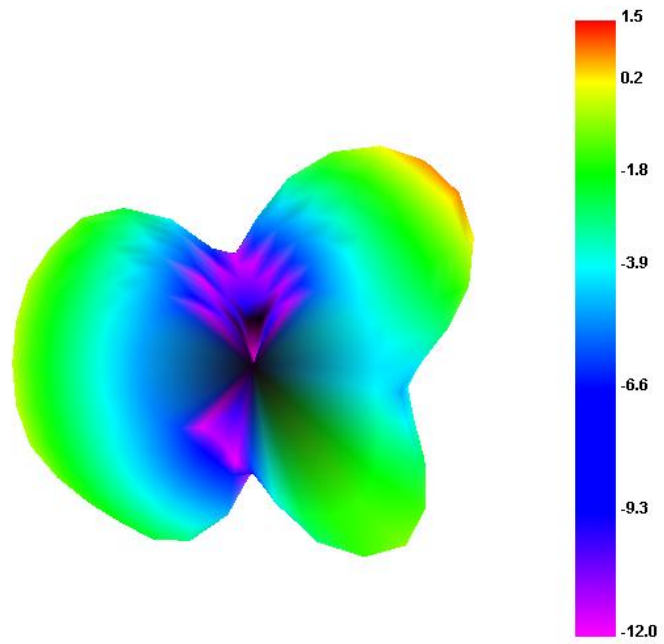


**E2**

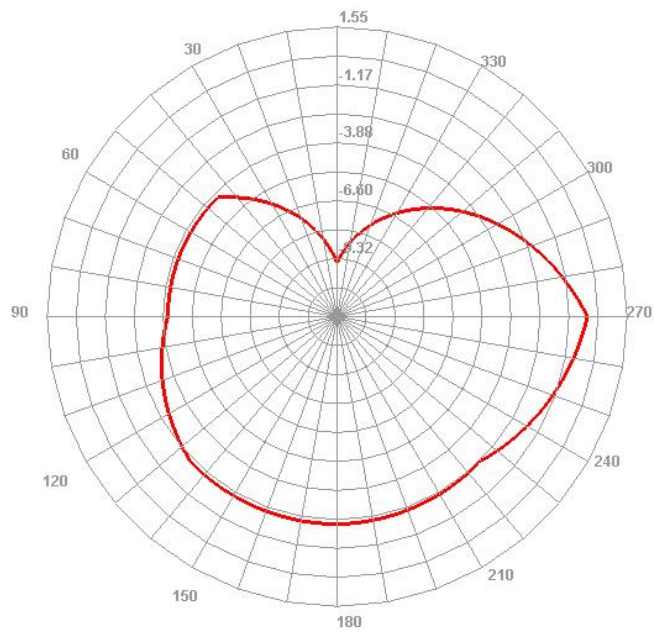




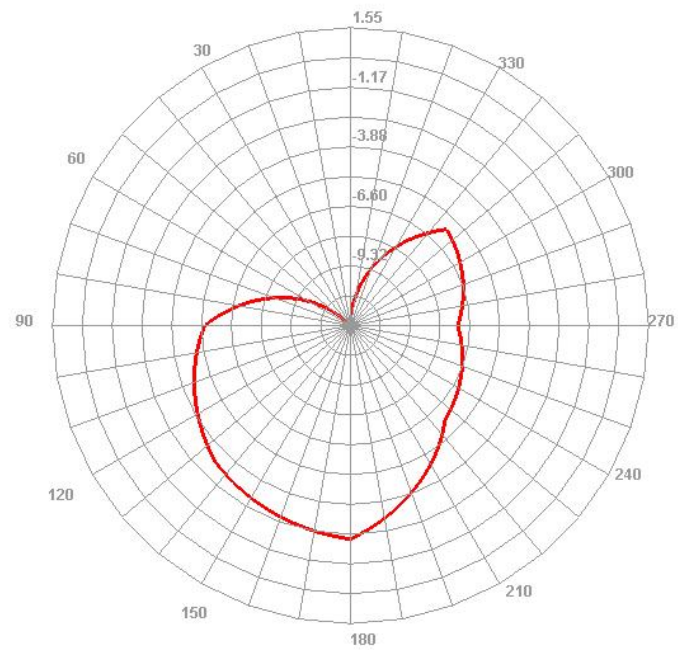
# LTE-B1



### E1

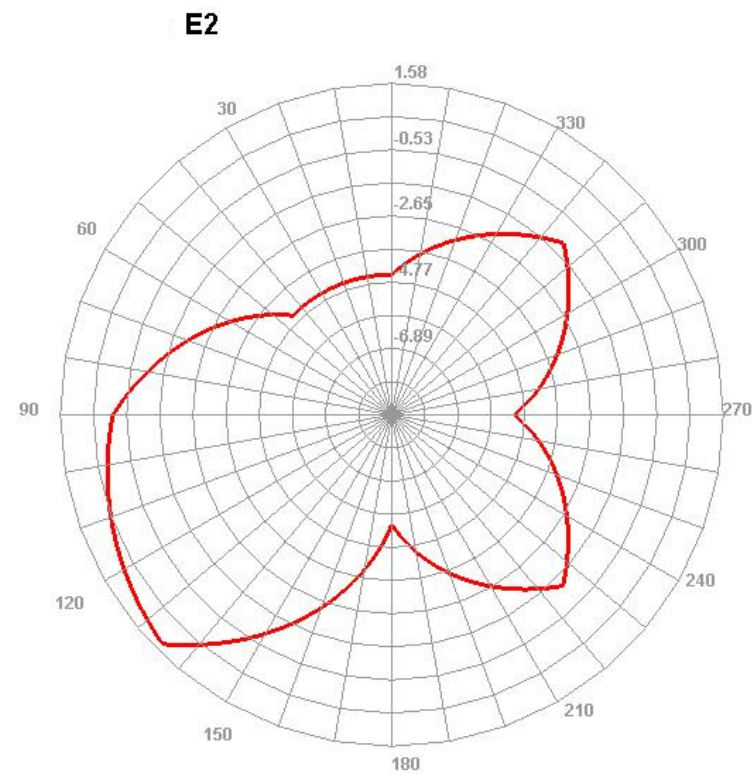
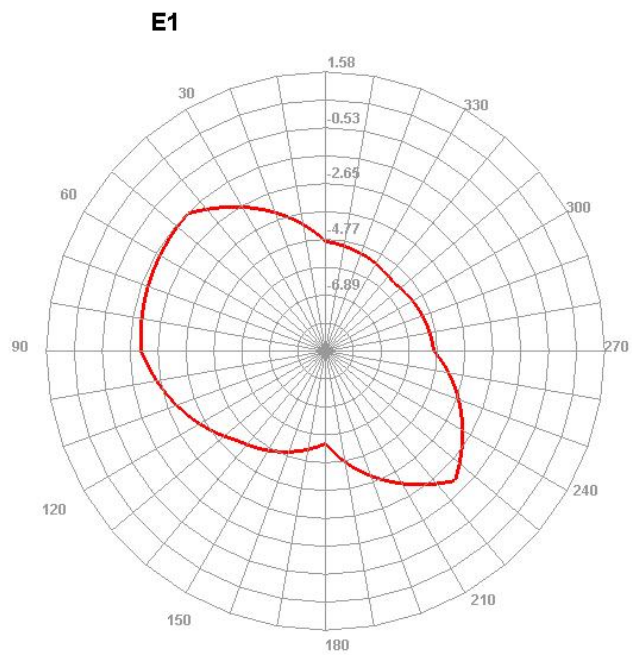
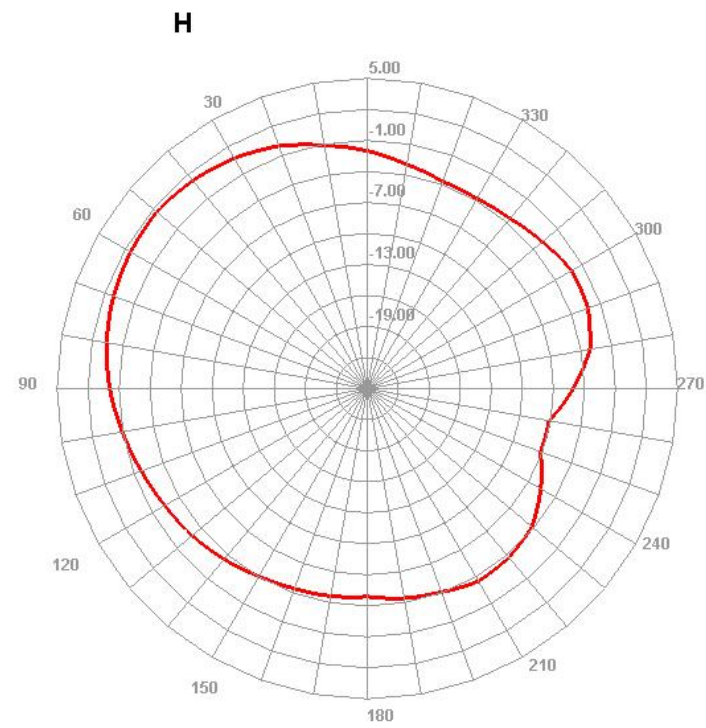
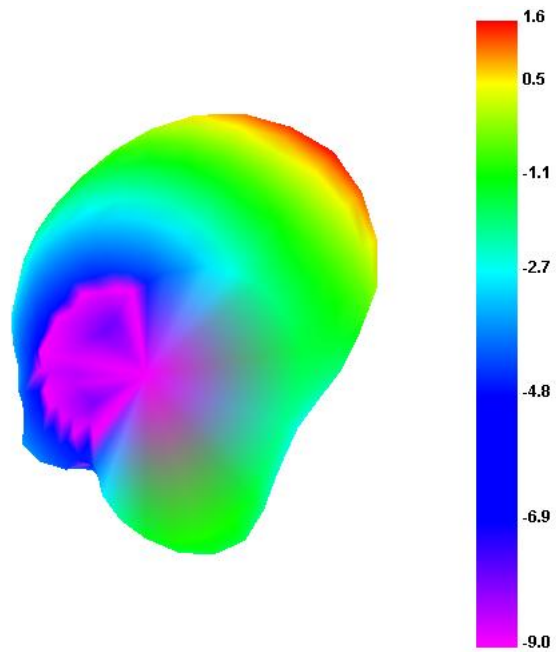


### E2

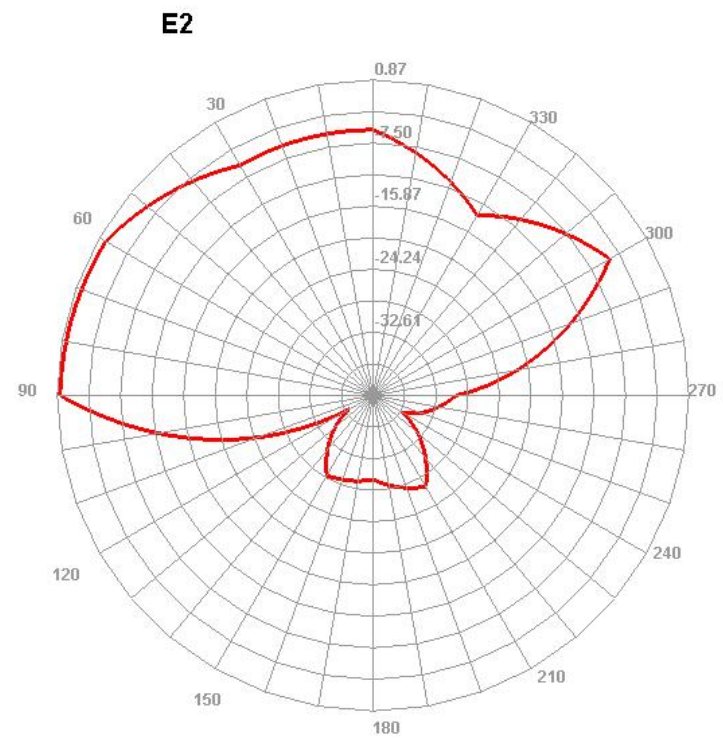
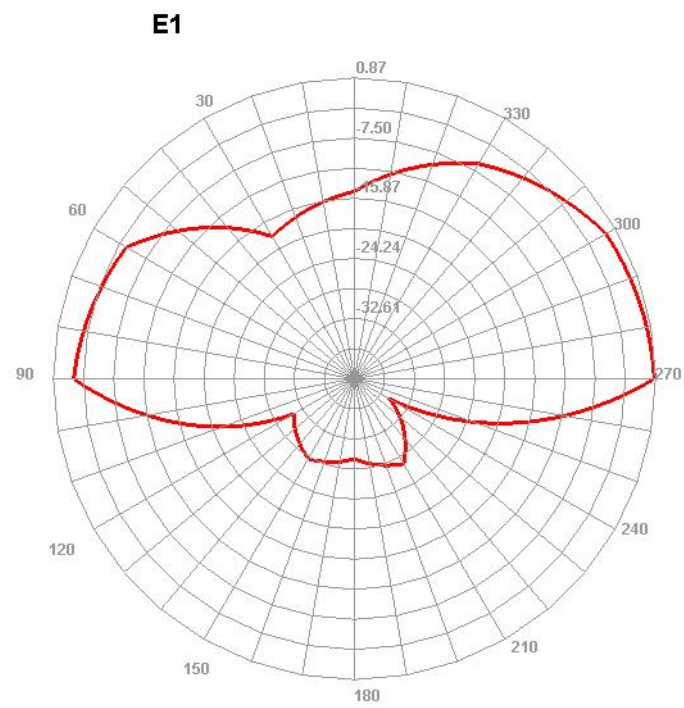
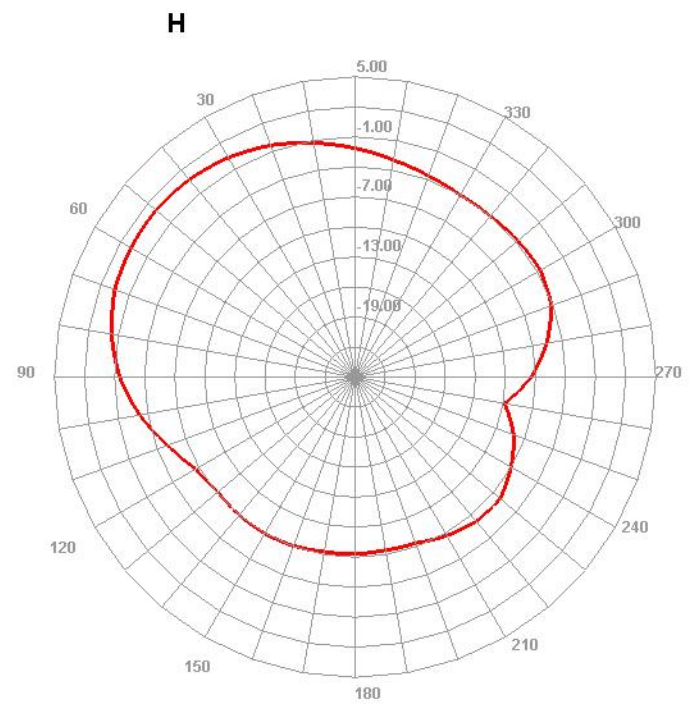
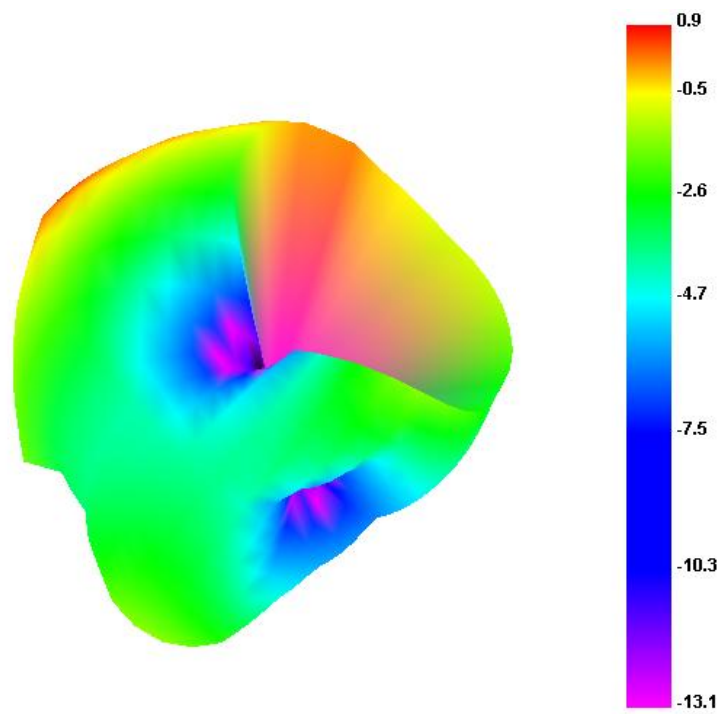




# LTE-B3

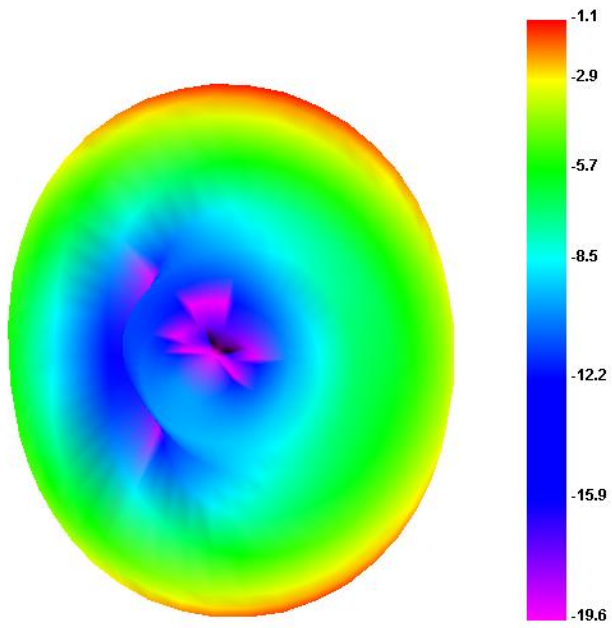


# LTE-B7

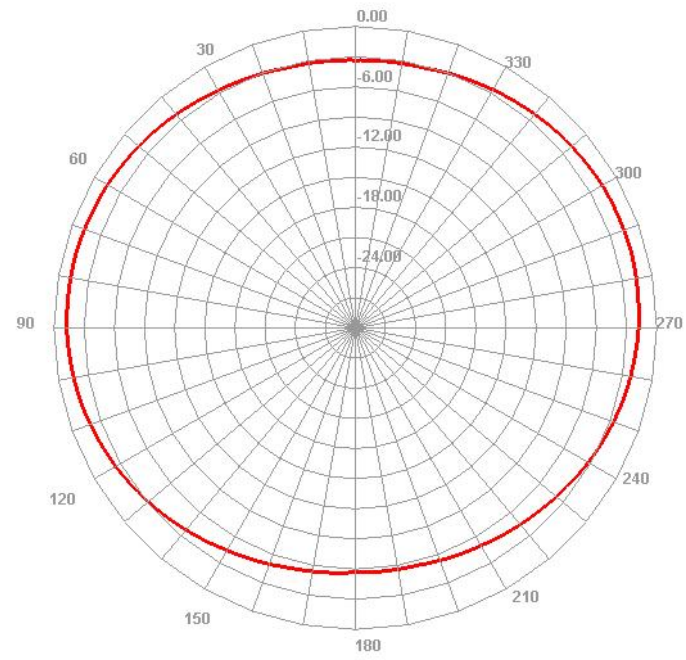




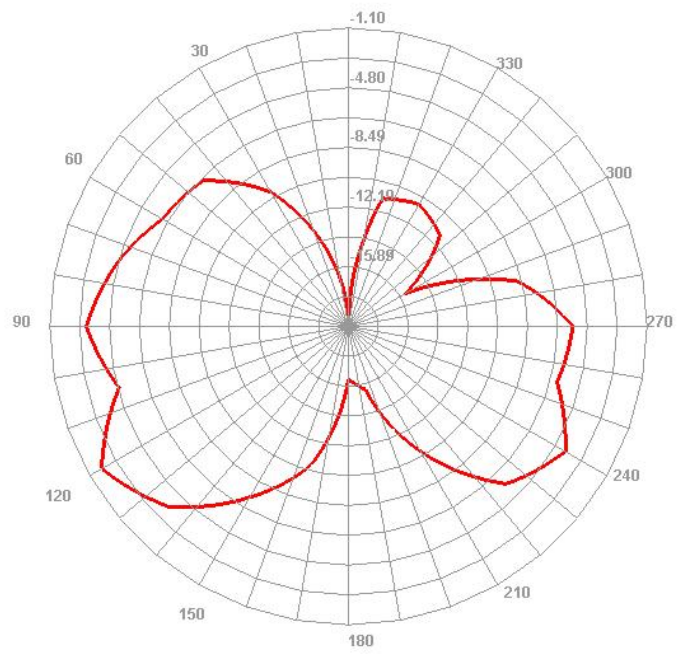
# LTE-B8



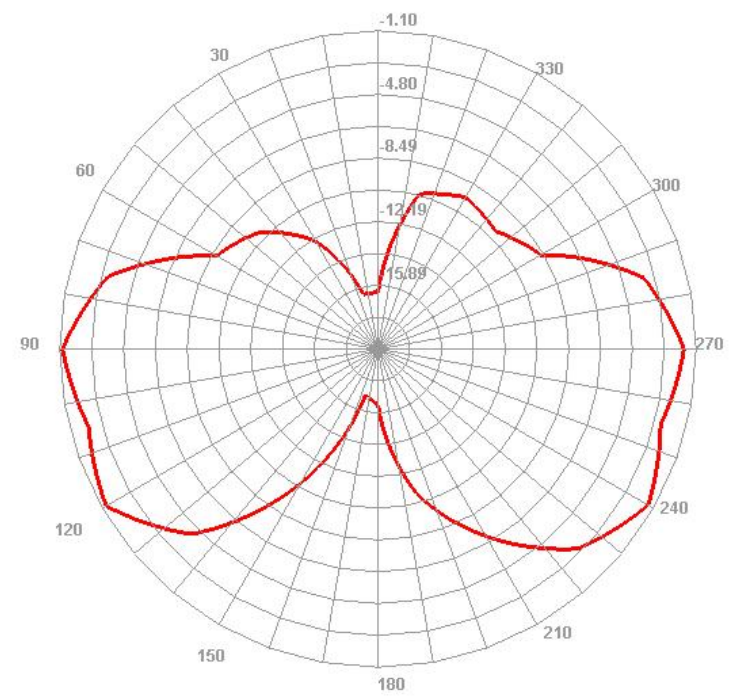
## H



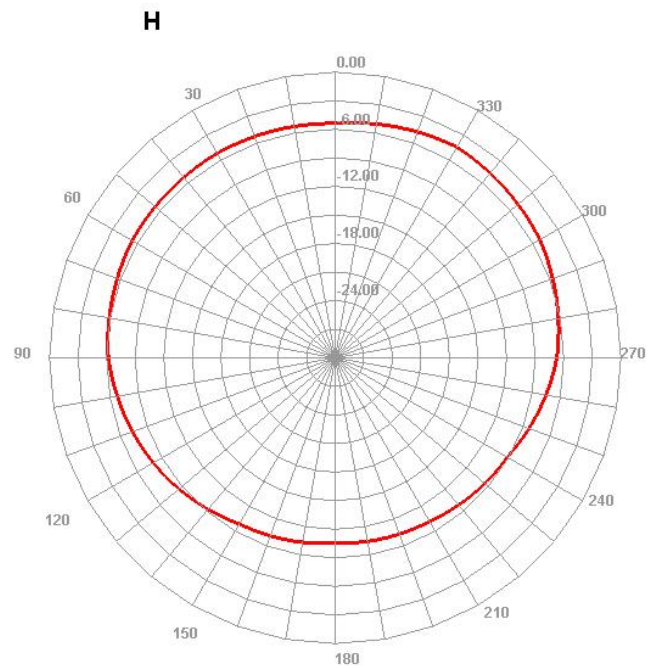
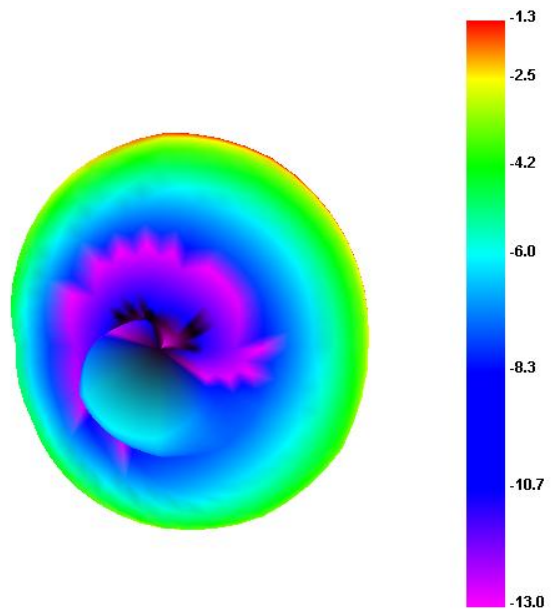
## E1



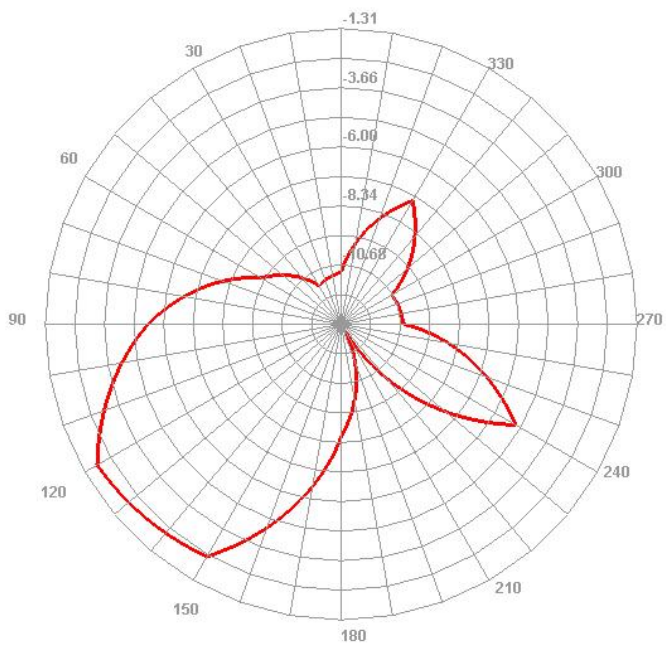
## E2



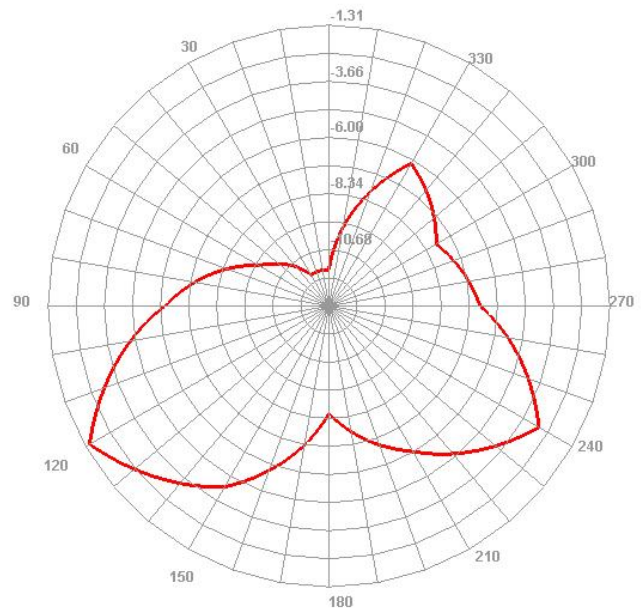
# LTE-B19



### E1

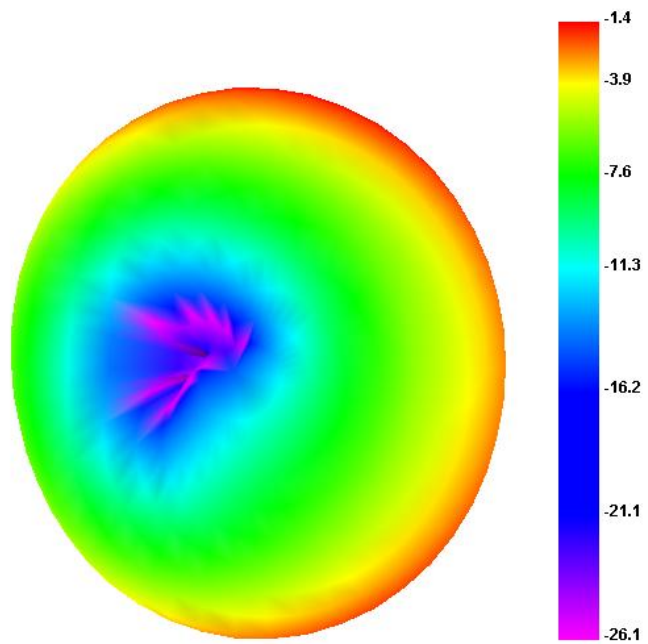


### E2

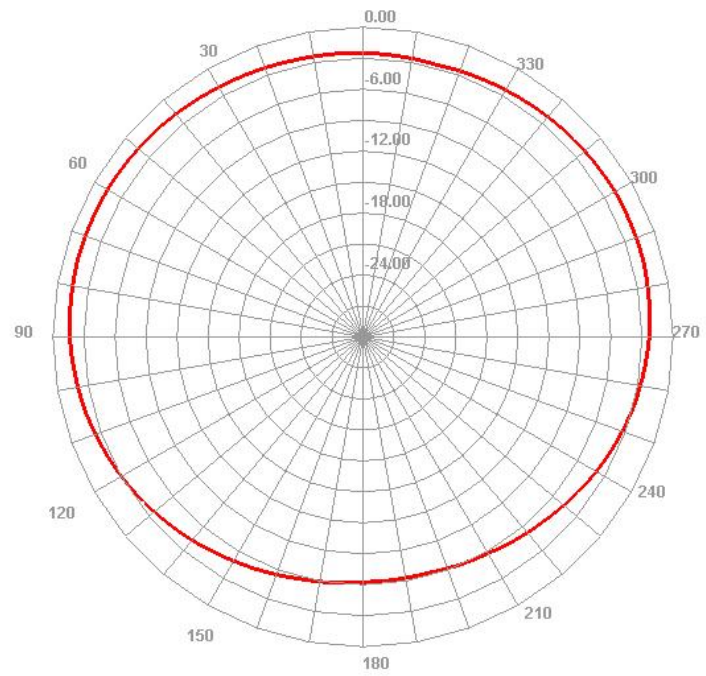




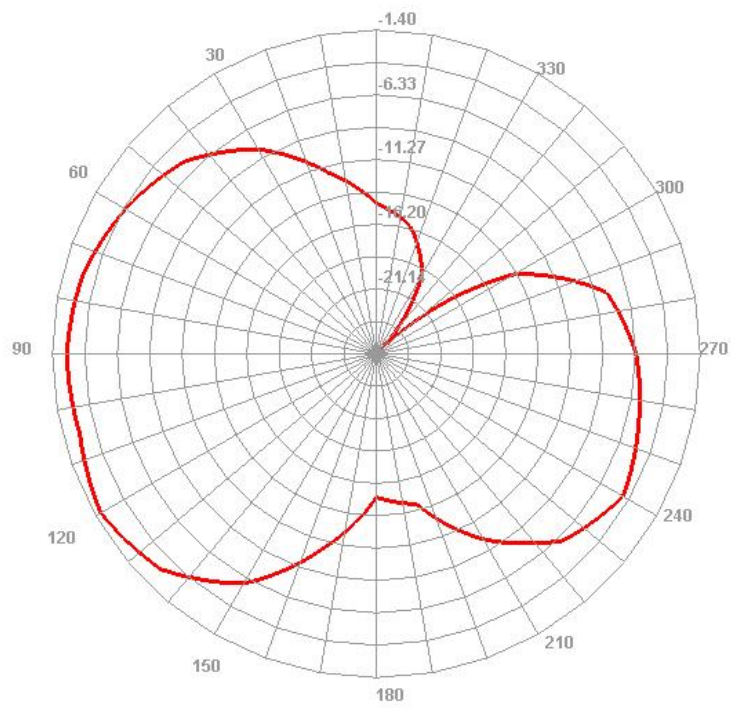
# LTE-B20



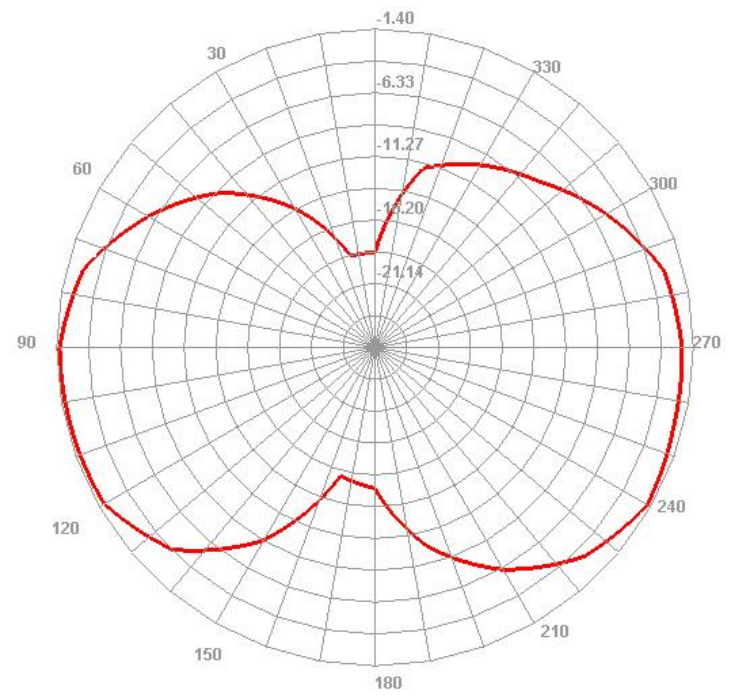
## H



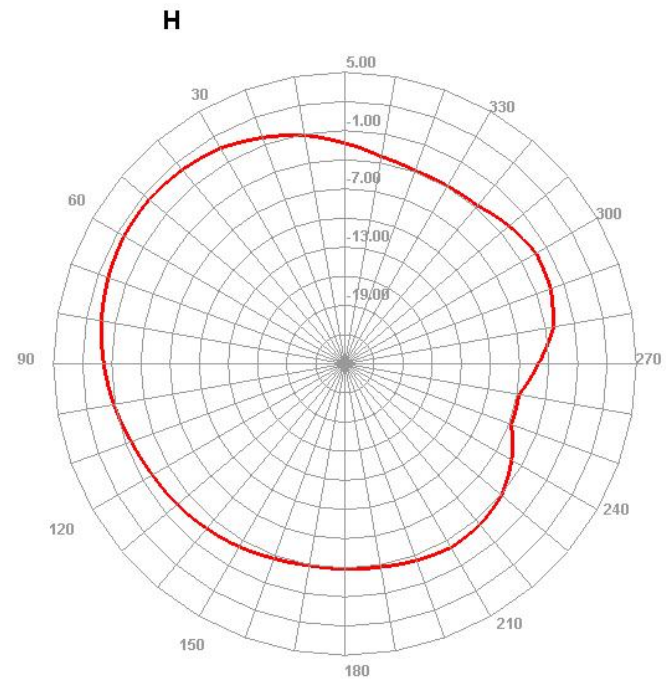
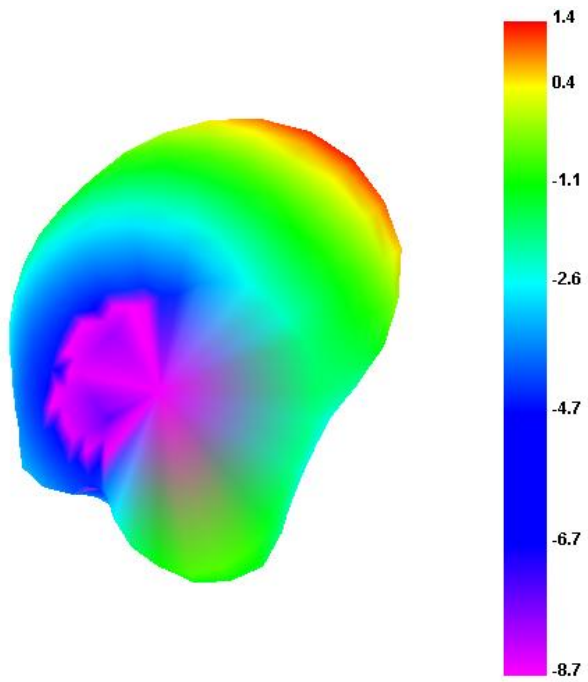
## E1



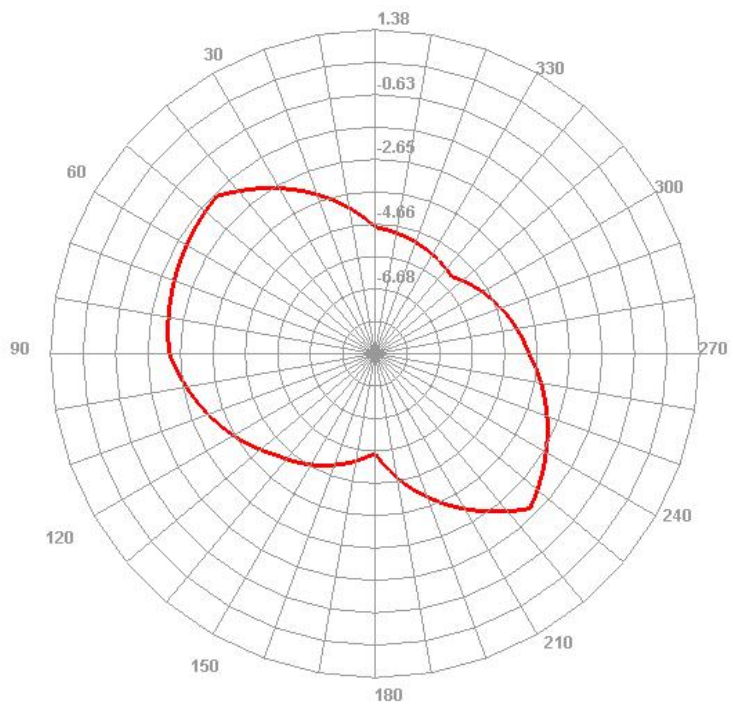
## E2



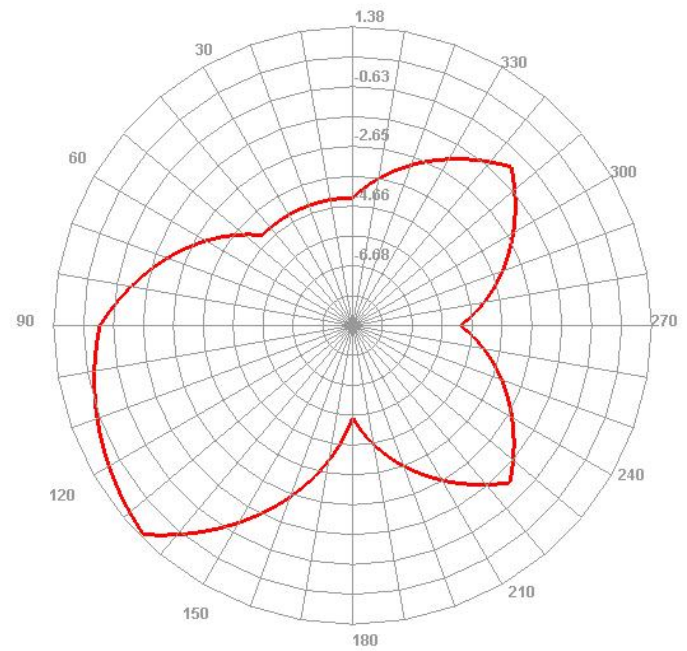
# LTE-B40



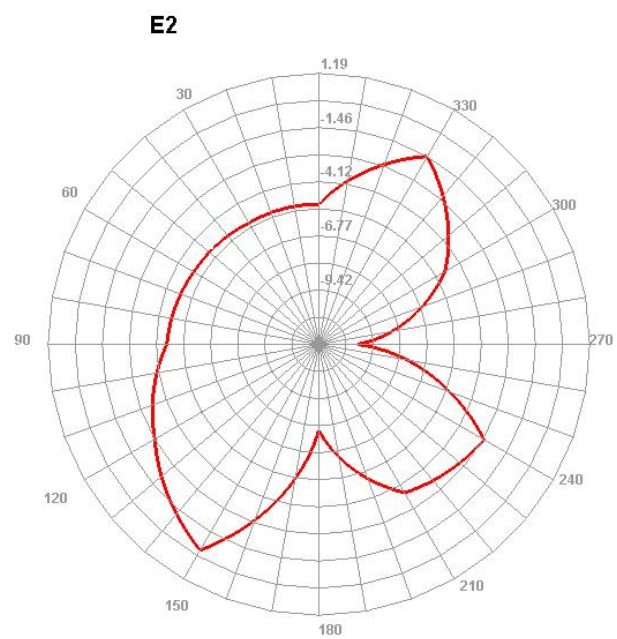
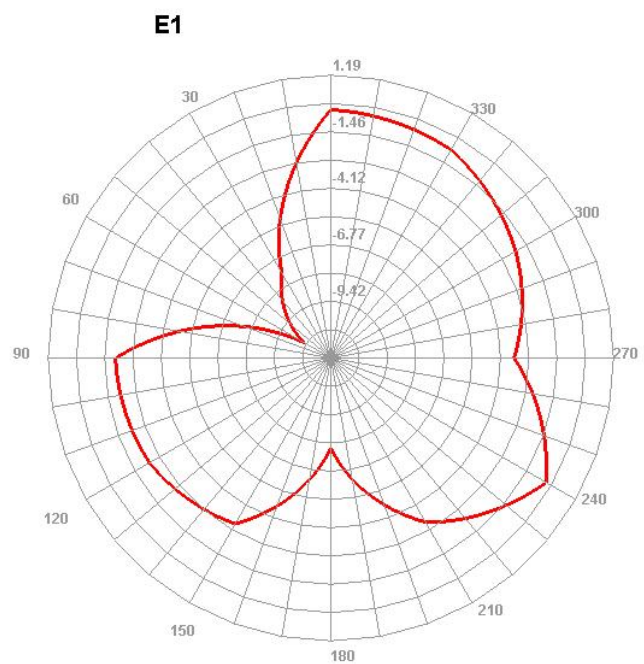
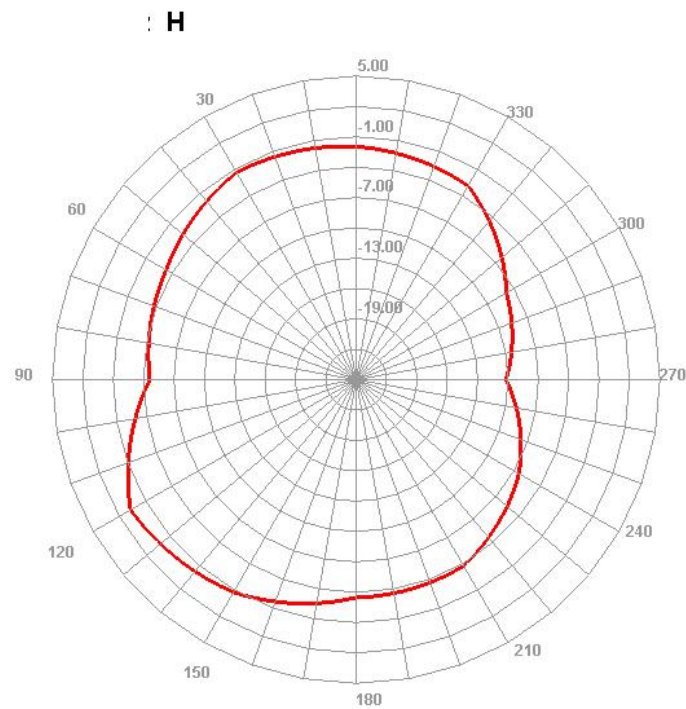
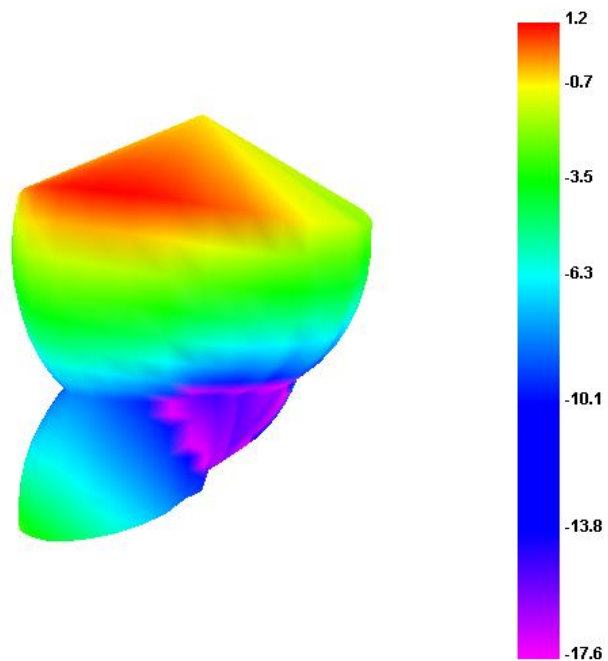
### E1



### E2



# GPS





# 2.4G WIFI

